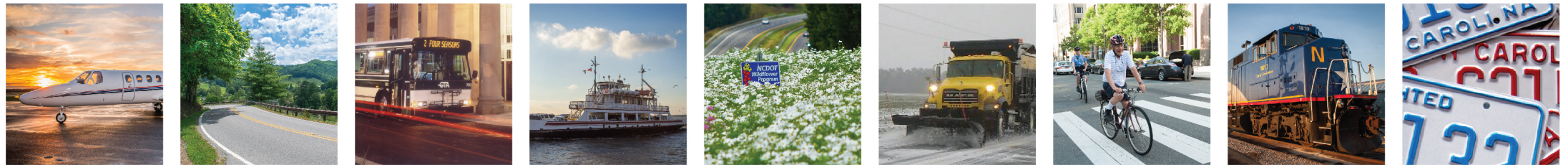




# NORTH CAROLINA

Department of Transportation



## Cash Balance Update

Evan Rodewald , Chief Financial Officer

August 1, 2018

# Session Law 2014-100

**SECTION 34.23.(c)** In any month in which the Department's total cash balance on hand from the Highway Fund and the Highway Trust Fund exceeds one billion dollars (\$1,000,000,000), the Department shall report its cash balance no later than the 15th day of the following month as follows:

(1) To the Board of Transportation.

(2) If the General Assembly is in session, to the Chairs of the House of Representatives Appropriations Subcommittee on Transportation, the Chairs of the Senate Appropriations Committee on Department of Transportation, and the Fiscal Research Division.

(3) If the General Assembly is not in session, to the Chairs of the Joint Legislative Transportation Oversight Committee and the Fiscal Research Division.

The report shall include an explanation from the Department of the reasons the cash balance has exceeded the amount specified in this subsection, the actions to be taken by the Department to reduce the cash balance, and the estimated amount of time it will take to bring the cash balance to the target identified in G.S. 143C-6-11(k)(1), as amended by subsection (a) of this section.

**SECTION 34.23.(d)** Subsection (c) of this section becomes effective July 1, 2015.

# Cash Balance

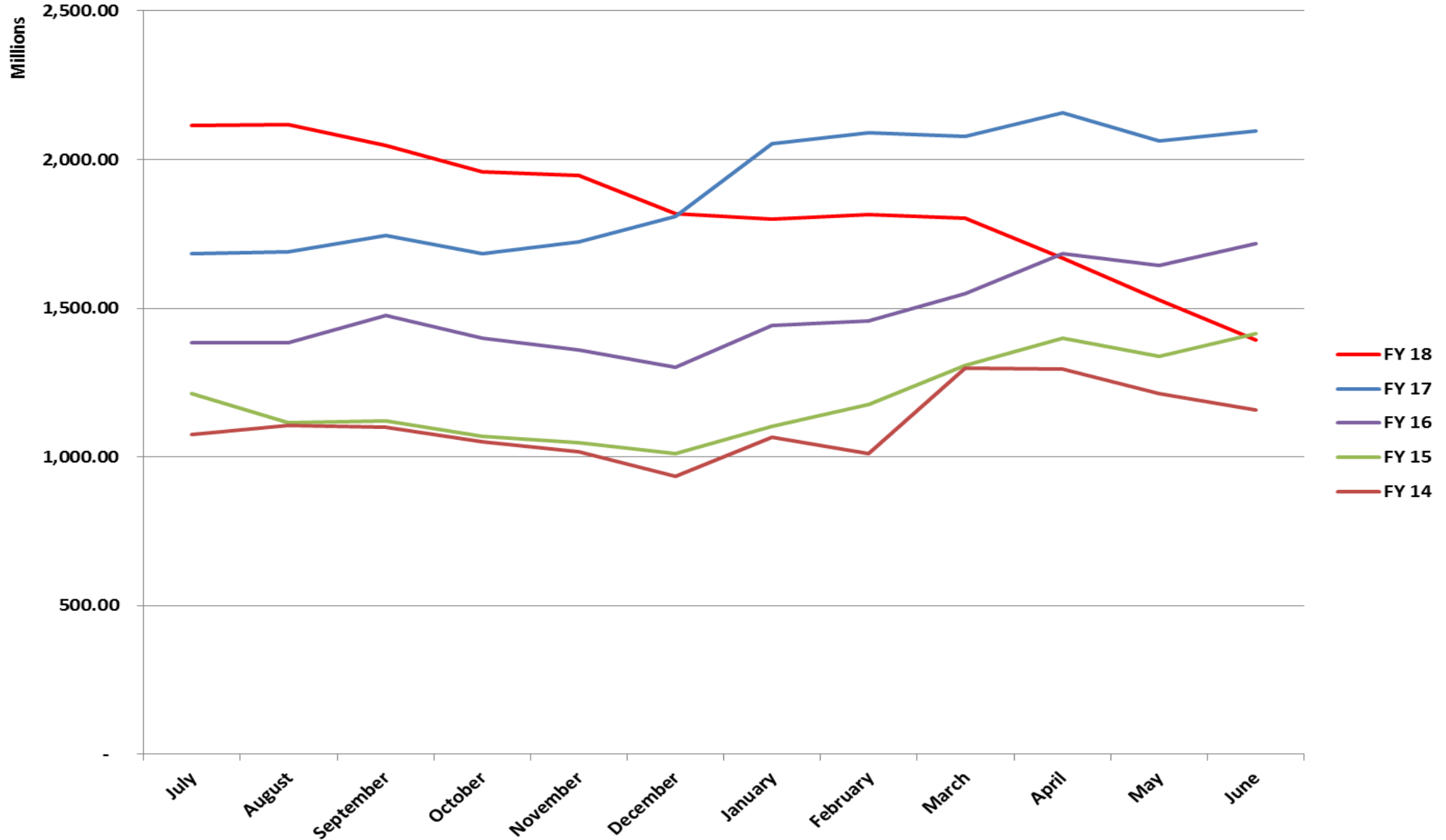
**The Cash Balance As of July 31, 2018 is - \$1.3 Billion,**

- Down \$0.1B since end of June 2018
- Down \$0.5B since beginning of the calendar year
- Down \$0.8B since beginning of the state fiscal year

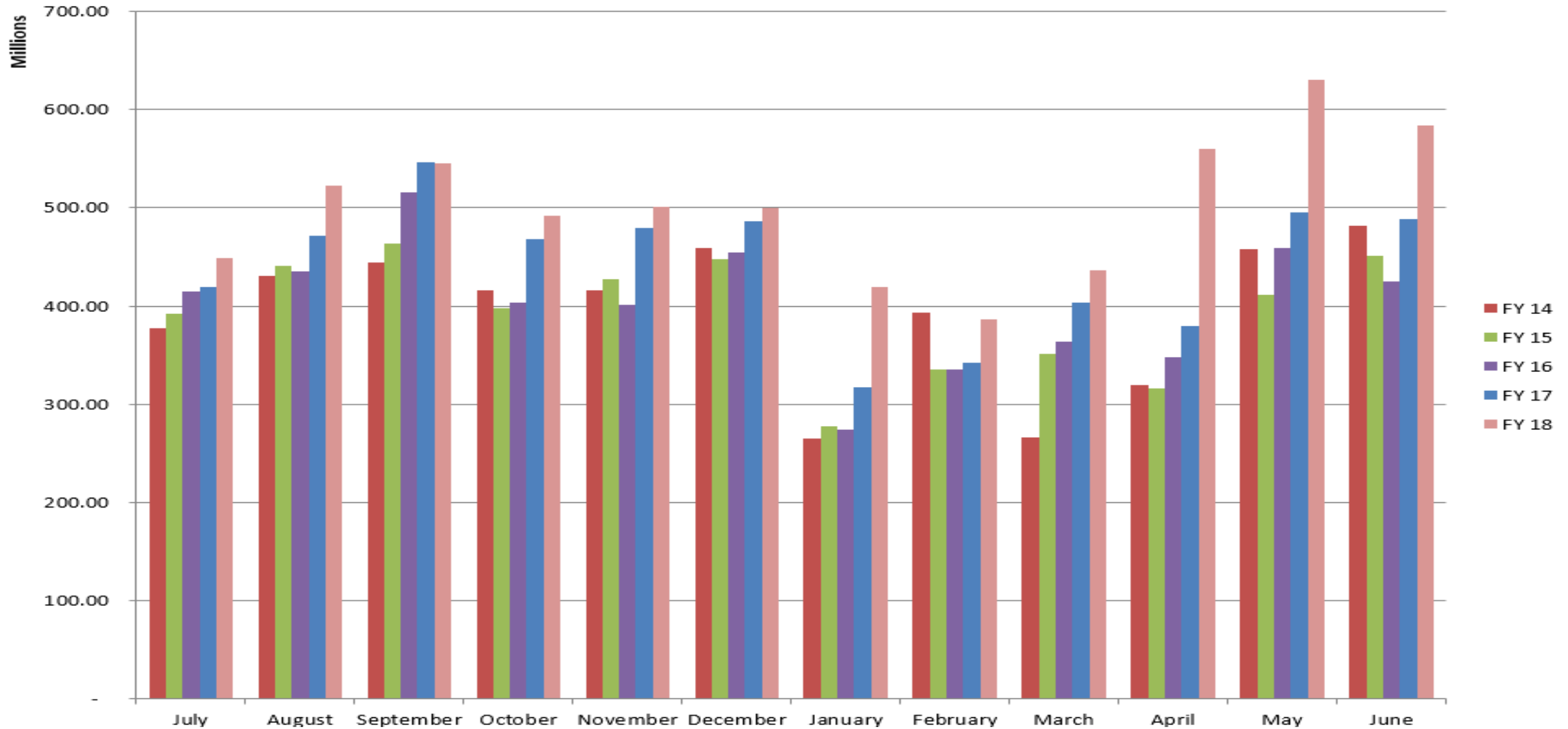
**Since January 2015, the last time the cash balance was \$1 Billion:**

- State revenues exceeded the forecast by \$547m
- Construction expenditures were less than predicted by \$698m

# Monthly Closing Cash Balance by SFY and Month



# Monthly Disbursements by Fiscal Year

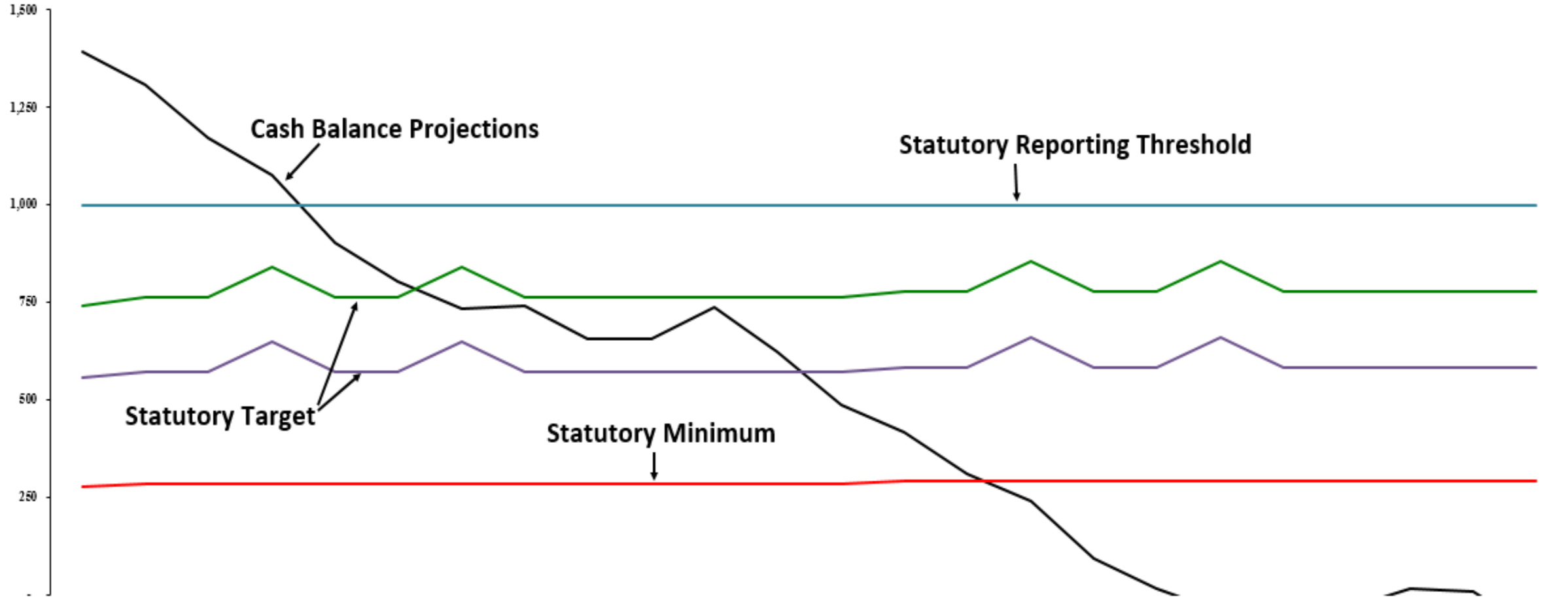


# Project Delivery and Financial Indicators

(Year Over Year Comparison)

(\$ in millions)	July - June 2018	July - June 2017	Difference \$	Difference %
<b>PE Lettings (Awards)</b>	<b>690</b>	<b>348</b>	<b>342</b>	<b>98%</b>
<b>Maintenance Lettings</b>	<b>1,214</b>	<b>802</b>	<b>412</b>	<b>51%</b>
<b>Construction Lettings</b>	<b>2,035</b>	<b>1,462</b>	<b>573</b>	<b>39%</b>
<b>PE Expenditures</b>	<b>409</b>	<b>266</b>	<b>143</b>	<b>54%</b>
<b>ROW Expenditures</b>	<b>363</b>	<b>319</b>	<b>44</b>	<b>14%</b>
<b>Construction Expenditures</b>	<b>2,327</b>	<b>1,861</b>	<b>466</b>	<b>25%</b>
<b>Maintenance Expenditures</b>	<b>1,743</b>	<b>1,411</b>	<b>332</b>	<b>24%</b>
<b>Modal Expenditures</b>	<b>353</b>	<b>357</b>	<b>-4</b>	<b>-1%</b>
<b>Other Expenditures</b>	<b>620</b>	<b>553</b>	<b>67</b>	<b>12%</b>
<b>Cash Balance</b>	<b>1,393</b>	<b>2,095</b>	<b>-702</b>	<b>-34%</b>

# Monthly Projected Ending Cash Balance



	Jun-18	Jul-18	Aug-18	Sep-18	Oct-18	Nov-18	Dec-18	Jan-19	Feb-19	Mar-19	Apr-19	May-19	Jun-19	Jul-19	Aug-19	Sep-19	Oct-19	Nov-19	Dec-19	Jan-20	Feb-20	Mar-20	Apr-20	May-20	
Cash Balance Projections	1,393	1,309	1,171	1,076	905	805	735	742	657	656	738	623	487	418	310	239	92	14	(41)	(5)	(37)	17	10	(94)	
Statutory Target - 20%	742	765	765	840	765	765	840	765	765	765	765	765	765	780	780	856	780	780	856	780	780	780	780	780	780
Statutory Minimum	278	287	287	287	287	287	287	287	287	287	287	287	287	292	292	292	292	292	292	292	292	292	292	292	292
Statutory Reporting Threshold	1,000	1,000	1,000	1,000	1,000	1,000	1,000	1,000	1,000	1,000	1,000	1,000	1,000	1,000	1,000	1,000	1,000	1,000	1,000	1,000	1,000	1,000	1,000	1,000	1,000
Statutory Target - 15%	557	574	574	648	574	574	648	574	574	574	574	574	574	585	585	661	585	585	661	585	585	585	585	585	585

# Cash Balance Information

## As of July 31, 2018 - The Cash Balance of \$1.3 Billion Represents:

- 85 Days of Working Capital
- NCDOT has contractual obligations of \$5.5 billion
  - Outstanding Purchase Orders of \$344 million
  - Outstanding Contracts of \$5.2 billion
- The following 10 contracts are 18% of contractual obligations:
  1. Flatiron Constructors, INC – BLYTHE(Future I-74, US 311 to SR 2211) \$131 million
  2. Flatiron Constructors, INC.(Rodanthe NC-12) \$121 million
  3. Balfour Beatty / Branch(Fayetteville Outer Loop) \$119 million
  4. Asheboro Bypass Constructors, LLC(Asheboro Southern BYP) \$118 million
  5. ES Wagner Company LLC/Smith-Rowe(US 29 North of Greensboro) \$114 million
  6. Balfour Beatty Infrastructure, INC.(From SR 1409 to US 17 in Wilmington) \$88 million
  7. The Lane Construction Corporation(I-85 from Lane Street in Cabarrus Co.) \$86 million
  8. Barnhill Contracting Company(Fayetteville Outer Loop from South of 401) \$76 million
  9. Flatiron Constructors, INC. - BLYTHE(US 158/US 421/NC 150/BUSINESS 40) \$69 million
  10. Flatiron Constructors, INC. – BLYTHE(I-40) \$63 million