



★ **NCDOT Highway Division 10**  
716 W. Main Street  
Albemarle, N.C. 28001  
704-983-4400

# Division 10 2021 Guide



## NCDOT Highway Division 10

716 W. Main Street  
Albemarle, N.C. 28001  
704-983-4400

## Brett Canipe, PE

Division Engineer  
704-983-4400  
[bdcanipe@ncdot.gov](mailto:bdcanipe@ncdot.gov)

## Anthony T. Lathrop

Board of Transportation Member  
704-331-3596  
[bot-tlathrop1@ncdot.gov](mailto:bot-tlathrop1@ncdot.gov)

## DIVISION EMPLOYEES

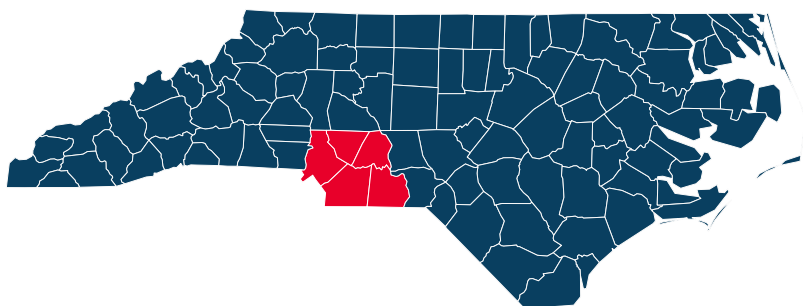
As of October 2020

**408**  
Permanent

**2**  
Temporary

**410**  
Total

## DIVISION 10 COUNTIES



**ANSON  
CABARRUS  
MECKLENBURG**

**STANLY  
UNION**

## ROAD MILES

**5,062**

## LANE MILES

**11,442**



## PASSENGER RAIL STATIONS

Charlotte  
Kannapolis



## AIRPORTS

Charlotte Douglas International  
Charlotte-Monroe Executive  
Concord Regional  
Anson County  
Stanly County



## N.C. TURNPIKE AUTHORITY

**Monroe Expressway**  
Mecklenburg and Union counties

# Our Work

## in Division 10

### MAJOR PROJECTS COMPLETED IN 2020

#### CONTINUOUS FLOW INTERCHANGE (MECKLENBURG COUNTY)

- ⇒ The state's first CFI is located on N.C. 16 at Mount Holly Huntersville Road in west Charlotte.
- ⇒ This design separates left-turning traffic from the main flow of traffic on N.C. 16, improving safety and efficiency.

#### U.S. 74 INTERSECTION IMPROVEMENTS (UNION COUNTY)

- ⇒ This project converted four intersections along U.S. 74 in Indian Trail from full-movement signalized intersections to reduced conflict intersections, or RCIs.
- ⇒ The RCI redirects side-street traffic from going straight through or left at a divided highway intersection, instead turning right and safely accessing a U-turn to proceed in the opposite direction.
- ⇒ This design improves safety by reducing conflict points and decreases travel time because of simplified signal phasing.
- ⇒ The intersections are located along U.S. 74 at Wesley Chapel-Stouts Road/Sardis Church Road, Faith Church Road, Unionville-Indian Trail Road, and Indian Trail/Indian Trail-Fairview Road.

### MAJOR PROJECTS UNDERWAY IN 2021

#### I-485 EXPRESS LANES (MECKLENBURG COUNTY)

- ⇒ Adding one express lane each way between I-77 and U.S. 74, and one general-purpose lane each way between Rea Road and Providence Road
- ⇒ Widening Ballantyne Commons Parkway bridge in Charlotte
- ⇒ Building an interchange at Weddington Road in Matthews
- ⇒ Improving the John Street interchange in Matthews
- ⇒ Completion scheduled in 2022

#### N.C. 24/N.C. 27 WIDENING (STANLY COUNTY)

- ⇒ Widening N.C. 24/27 from N.C. 740 in Albemarle to Pee Dee River to four lanes
- ⇒ Includes a reduced-conflict intersection in Albemarle and a roundabout at Barnard Road and Anderson Road
- ⇒ Completion scheduled in 2023

# Our Work

in Division 10



## STATE TRANSPORTATION IMPROVEMENT PROGRAM **(STIP)** CONTRACTS AWARDED DURING STATE FISCAL YEAR 2019-20 **(FY 2020)**

**20**  
Projects

**\$109,544,145**  
Value

### RESURFACING PROJECTS FY 2020

Primary routes: **39.05 lane miles**  
Cost: **\$955,544**

Secondary roads: **220.86 lane miles**  
Cost: **\$30,569,250**

Total: **259.91 lane miles**  
Total cost: **\$33,159,378**

**MAINTENANCE SPENDING FY 2020:**  
**\$31.4 million**

### BRIDGES FY 2020

Inspected: **802**  
Rehabilitated: **4**  
Replaced: **8**

**DRIVEWAY PERMITS ISSUED FY 2020: 243**

**SUBDIVISION PLANS REVIEWED FY 2020: 52**

**PROJECT-RELATED PUBLIC MEETINGS FY 2020: 9**

### LITTER CLEANUP FY 2020

Roadside litter picked up\*: **6,358,228 pounds**  
State cost: **\$1,748,856**

*\*Combines Contract Litter Removal, NCDOT Forces, Adopt-A-Highway, Sponsor-A-Highway and other volunteers*

### WEATHER-RELATED PREPARATION AND CLEANUP FY 2020

#### Winter weather operations

Brine: **50,000 gallons**  
Salt: **32 tons**  
Salt/Sand: **75 tons**

# Infrastructure

## Health and Safety

### DIVISION 10 INFRASTRUCTURE HEALTH



#### BRIDGE HEALTH INDEX

(percent in good condition) as of July 2020

Interstate: **95.5**

Primary: **86.8**

Secondary: **84.1**

Total: **87**

#### STRUCTURALLY DEFICIENT BRIDGES

(percent) as of July 2020

Interstate: **1.6**

Primary: **5.0**

Secondary: **5.6**

Total: **4.7**

#### PAVEMENT CONDITION RATINGS

(percent of pavement miles ranked good) as of December 2019

Interstate: **88.6**

Primary: **72.9**

Secondary: **64.7**

Total: **68.1**

### DIVISION 10 HIGHWAY SAFETY RATES FY 2020



#### TRAVEL VOLUME (IN 100 MVMT\*)

5-Year Avg.\*\*: **186.2**

FY 20: **180.9**

#### TOTAL CRASHES

5-Year Avg.: **54.723**

FY 20: **52,839**

#### CRASH RATE (PER 100 MVMT)

5-Year Avg.: **293.8**

FY 20: **292**

#### TOTAL FATALITIES

5-Year Avg.: **155**

FY 20: **147**

#### FATALITY RATE (PER 100 MVMT)

5-Year Avg.: **0.8**

FY 20: **0.8**

#### TOTAL INJURIES

5-Year Avg.: **25,729**

FY 20: **22,121**

#### INJURY RATE (PER 100 MVMT)

5-Year Avg.: **138.1**

FY 20: **122.2**

#### BICYCLE AND PEDESTRIAN FATALITIES FY 2020

Bicycle: **3**

Pedestrian: **37**

\*100 Million Vehicle Miles of Travel (MVMT)

\*\* 5-year average for fiscal years 2015-2019

# The Coming Decade

The State Transportation Improvement Program (STIP) lays out the N.C. Department of Transportation's plan for transportation projects during the next 10 years. The STIP is updated approximately every two years. The 2020-2029 STIP includes **259** projects in Division 10. Among the improvements planned are:

- ⇒ In Mecklenburg County, widen U.S. 521 from Ballantyne Commons Parkway to the South Carolina line, with construction starting in 2026.
- ⇒ In Mecklenburg County, widen N.C. 49 from John Kirk Drive to Interstate 485, with construction starting in 2025.
- ⇒ In Anson County, replacing the bridge on U.S. 52 over Rocky River into Stanly County, with construction starting in 2021.

## 2020-2029 STIP PROJECTS FOR DIVISION 10



**Aviation projects: 10**  
**Total value: \$877,431,000**



**Interstate Maintenance projects: 9**  
**Total value: \$56,842,000**



**Bicycle and Pedestrian projects: 30**  
**Total value: \$67,479,000**



**Public Transit projects: 58**  
**Total value: \$67,352,020**



**Bridge projects: 18**  
**Total value: \$53,071,000**



**Rail projects: 2**  
**Total value: \$9,880,000**



**Air Quality projects: 9**  
**Total value: \$21,008,000**



**Safety projects: 8**  
**Total value: \$3,250,000**



**Highway projects: 89**  
**Total value: \$1,776,058,390**



**ALL PROJECTS: 259**  
**Total value: \$3,463,633,470**

# Contacts

## Division 10

**Division Engineer Brett Canipe, PE**

704-983-4400 | [bdcanipe@ncdot.gov](mailto:bdcanipe@ncdot.gov)

**Deputy Division Engineer Jeff Littlefield, PE**

704-983-4400 | [jslittlefield@ncdot.gov](mailto:jslittlefield@ncdot.gov)

**Division Business Officer Sarah Vang**

704-983-4400 | [savang@ncdot.gov](mailto:savang@ncdot.gov)

**Division Construction Engineer Rick Baucom, PE**

704-983-4400 | [rwbaucom@ncdot.gov](mailto:rwbaucom@ncdot.gov)

**Division Project Development Engineer Timothy Boland, PE**

704-983-4400 | [tboland@ncdot.gov](mailto:tboland@ncdot.gov)

**Division Planning Engineer Stuart Basham, PE**

980-262-6275 | [slbasham@ncdot.gov](mailto:slbasham@ncdot.gov)

**Division Maintenance Engineer Lee Ainsworth, PE**

704-983-4400 | [clainsworth@ncdot.gov](mailto:clainsworth@ncdot.gov)

**Anson County Maintenance**

1017 Old Prison Camp Road, Polkton, 980-575-6100

**Cabarrus County Maintenance**

150 Dutch Road, Mount Pleasant, 980-287-0044

**Mecklenburg County Maintenance**

6820 Rozzelles Ferry Road, Charlotte, 980-523-0160

**Stanly County Maintenance**

913 Coble Avenue, Albemarle, 704-244-8300

**Union County Maintenance**

130 S. Sutherland, Monroe, 704-218-5140

**Division Traffic Engineer Tony Tagliaferri, PE**

704-983-4400 | [atagliaferri@ncdot.gov](mailto:atagliaferri@ncdot.gov)

**Public Relations Officer Jen Thompson**

980-523-0000 | [jenthompson@ncdot.gov](mailto:jenthompson@ncdot.gov)



# Division of Motor Vehicles

## in Division 10 Counties

# 1,361,011 | 1,193,288

Vehicle registrations  
as of July 2020

Drivers licensed as  
of July 2020

- Driver License Office
- License Plate Agency

### Anson County

#### License Plate Agency

Anson County Government Center  
101 South Greene Street  
Wadesboro  
704-994-3292

#### Driver License Office

5920 U.S. 74 West  
Polkton  
704-694-5534

### Cabarrus County

#### Driver License Office

Concord Driver License Office  
2192 Kannapolis Parkway  
704-782-7214

#### License Plate Agencies

Bestway Center  
4612 N.C. 49  
Harrisburg  
980-258-8078

1509 Dale Earnhardt Boulevard  
Kannapolis  
704-932-0383

929-D Concord Parkway South  
Concord  
704-723-4991

### Mecklenburg County

#### Driver License Offices

6635 Executive Circle, Suite 130  
Charlotte  
704-531-5563

201-H West Arrowood Road  
Charlotte  
704-527-2562

6016 Brookshire Boulevard  
Charlotte  
704-392-3266

12101 Mt. Holly-Huntersville Road  
Huntersville  
704-547-5786

9711 David Taylor Drive  
Charlotte  
919-715-7000

\*\*Mobile Unit (available Wednesdays)  
118 College Street  
Pineville  
919-715-7000

#### License Plate Agencies

5622 East Independence Blvd., Suite 124  
Charlotte  
704-535-2525

809 East Arrowood Road, Suite 800  
Charlotte  
704-525-3832

12101 Mt. Holly-Huntersville Rd.  
Huntersville  
704-875-2991

3250-G Wilkinson Blvd.  
Charlotte  
980-237-9598

Charlotte State Specialty Office  
6016 Brookshire Boulevard  
919-715-7000

### Stanly County

#### Driver License Office

611 Concord Road  
Albemarle  
704-982-4014

#### License Plate Agency

1524 N.C. 24/27 Bypass West  
Albemarle  
704-982-3854

### Union County

#### Driver License Office

3122 U.S. 74 West  
Monroe  
704-283-4264

#### License Plate Agencies

622 West Roosevelt Boulevard, Suite E  
Monroe  
704-283-4113

10415-J East Independence Boulevard  
Indian Trail  
704-234-8704

\*\*Mobile Unit at Edwards  
Memorial Library  
414 Hasty Street  
Marshville  
919-715-7000

*\*\*Service at this location is closed indefinitely due to COVID-19.*



# Local Public Transportation

## in Division 10

Local and regional transit systems provide public transportation service for residents of all 100 North Carolina counties. The NCDOT Public Transportation Division manages federal and state public transportation grant programs and supports transit agencies with planning, training and technical assistance.

### **Anson County**

Anson County Transportation System  
[anson.nc.us/199/Transportation](http://anson.nc.us/199/Transportation)  
704-694-2596

### **Cabarrus County**

Cabarrus County Transportation Service  
[cabarruscounty.us/departments/transportation](http://cabarruscounty.us/departments/transportation)  
704-920-2246

Concord-Kannapolis Area Transit  
[ckrider.com](http://ckrider.com)  
704-920-7433

### **Mecklenburg County**

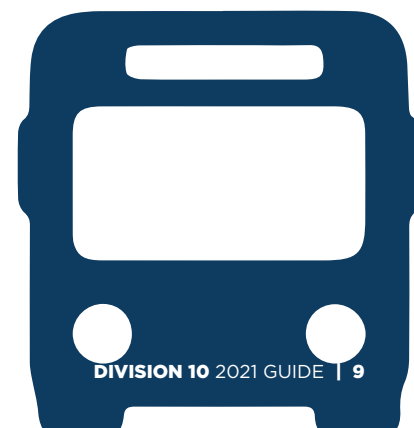
Charlotte Area Transit (CATS)  
[charlottenc.gov/cats/Pages/default.aspx](http://charlottenc.gov/cats/Pages/default.aspx)  
704-336-7433

### **Stanly County**

SCUSA Transportation  
[stanlycountync.gov/transportation](http://stanlycountync.gov/transportation)  
704-986-3790

### **Union County**

Union County Transportation Service  
[unioncountync.gov/departments/transportation](http://unioncountync.gov/departments/transportation)  
704-292-2511



# Rural and Metropolitan Planning Organizations

## Division 10

Rural Planning Organizations (RPOs) and Metropolitan Planning Organizations (MPOs) are North Carolina's local transportation planning agencies. They develop transportation projects for their communities and help NCDOT decide which projects will receive public funding.

### **CABARRUS-ROWAN MPO (CRMPO)**

**Phil Conrad, Transportation Planner**

713 Sternbridge Drive

Concord, N.C. 28025

[crmpo.org](http://crmpo.org) | 704-795-7928 | [pconrad@mblsolution.com](mailto:pconrad@mblsolution.com)

### **CHARLOTTE REGIONAL MPO (CRTPO)**

**Robert Cook, Asst. Planning Director for CRTPO**

600 East Fourth Street

Charlotte, N.C. 28202

[crtpo.org](http://crtpo.org) | 704-336-2205 | [rwcook@charlottenc.gov](mailto:rwcook@charlottenc.gov)

### **ROCKY RIVER RPO**

**Lee Snuggs, Director**

1000 North First Street

Albemarle, N.C. 28001

[rockyriverrpo.org](http://rockyriverrpo.org) | 704-986-3876

[lsnuggs@rockyriverrpo.org](mailto:lsnuggs@rockyriverrpo.org)

#### **FOR CONSTITUENT INQUIRIES**

[constituent.services@ncdot.gov](mailto:constituent.services@ncdot.gov)

## **NCDOT MULTI-MODAL DIVISION CONTACTS**

### **AVIATION DIVISION**

**Bobby Walston, Director**

[bwalston@ncdot.gov](mailto:bwalston@ncdot.gov) | 919-814-0550

### **FERRY DIVISION**

**Harold Thomas, Director**

[hbthomas@ncdot.gov](mailto:hbthomas@ncdot.gov) | 252-423-5102

### **INTEGRATED MOBILITY DIVISION**

*(Bicycle & Pedestrian/Public Transportation)*

**Ryan Brumfield, Interim Director**

[rmbaumfield@ncdot.gov](mailto:rmbaumfield@ncdot.gov) | 919-707-4674

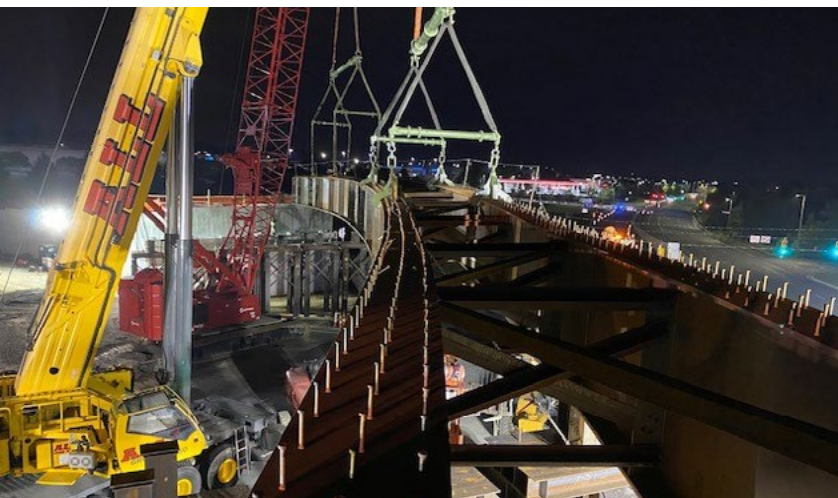
### **RAIL DIVISION**

**Jason Orthner, Director**

[jorthner@ncdot.gov](mailto:jorthner@ncdot.gov) | 919-707-4700

# Headlines

## Division 10



### CONCORD MILLS FLYOVER

Access to Concord Mills Mall will soon improve for visitors thanks to a \$10.2 million contract calling for a two-lane flyover bridge to connect from Interstate 85 at Concord Mills Boulevard to Kings Grant Pavilion, the first main entrance to the mall complex. The bridge will replace the existing left turn lanes at the intersection, improving traffic flow on Concord Mills Boulevard.

### CHARLOTTE GATEWAY STATION

NCDOT is leading Phase One design and construction for Charlotte's passenger rail station, which includes two 2,000-foot long station tracks, signals, five new bridges, and a high-level, 1,100-foot boarding platform and canopy foundations. This project also will improve freight traffic to the intermodal facility at Charlotte Douglas Airport, while separating freight and passenger train traffic. Construction is scheduled for completion in 2023.



### N.C. 24/27 BRIDGES

This project involves rehabilitation to two bridges on N.C. 24/27 crossing the Pee Dee River. The project also involves replacing the existing westbound arch bridge's deck, built in 1927. While the bridges are safe, extensive rehabilitation work is needed to extend their service life. The bridge's architectural character will remain intact during construction.

## N.C. DEPARTMENT OF TRANSPORTATION

1 S. Wilmington St.  
1501 Mail Service Center  
Raleigh, N.C. 27699-1501  
1-877-DOT-4YOU (1-877-368-4968)  
[ncdot.gov](http://ncdot.gov)

N.C. Division of Motor Vehicles: 919-715-7000

Real-time traffic information: [DriveNC.gov](http://DriveNC.gov) or dial 511

## NCDOT AND DIVISION 10 SOCIAL MEDIA CHANNELS

### FACEBOOK

@NCDOT

### TWITTER

@NCDOT

@NCDOT\_CHARLOTTE

@NCDOT\_PIEDMONT

@NC\_QUICKPASS

@NCTURNPIKE

### INSTAGRAM

@NCDOTCOM

### YOUTUBE

@NCDOTCOMMUNICATIONS

### FLICKR

@NCDOTCOMMUNICATIONS



North Carolina's 100 counties are divided into 14 regions - referred to as divisions - in which the responsibilities for road construction and maintenance by NCDOT's Division of Highways are distributed.

Some information in this Division Guide may have changed since publication (Jan. 2021). For the latest news and information, visit [ncdot.gov](http://ncdot.gov).

**North Carolina Department of Transportation**

**Roy Cooper, Governor**

**J. Eric Boyette, Secretary**