



A map of North Carolina counties. The counties of Buncombe, Burke, McDowell, Rutherford, Madison, Mitchell, and Yancey are highlighted in blue. A red star is located in Buncombe County. The text "DIVISION 13" is overlaid on the map. The map shows the following counties: Asheville, Watauga, Wilkes, Surry, Stokes, Forsyth, Yadkin, Alexander, Caldwell, Iredell, Davie, Davidson, Burke, Madison, Mitchell, Yancey, Buncombe, McDowell, Rutherford, Lincoln, Cleveland, Gaston, Mecklenburg, Cabarrus, Stanly, Union, Anson, Montg, Polk, Henderson, Haywood, Swain, Graham, Cherokee, Clay, Macon, and Jackson.

NCDOT Highway Division 13
55 Orange St.
Asheville, N.C. 28801
828-250-3000

Mark T. Gibbs, PE
Division Engineer
828-250-3000
mgibbs@ncdot.gov

William "Billy" Clarke
Board of Transportation Member
828-252-6600
bot-wclarke@ncdot.gov

DIVISION EMPLOYEES

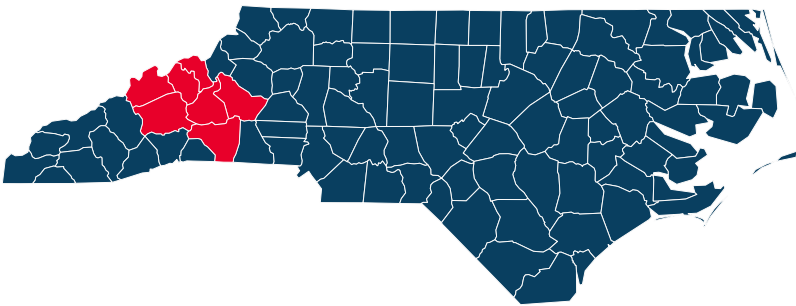
As of July 2020

435
Permanent

3
Temporary

438
Total

DIVISION 13 COUNTIES



**BUNCOMBE
BURKE
MADISON
MCDOWELL
MITCHELL**

**RUTHERFORD
YANCEY**

**ROAD MILES
5,116**



**LANE MILES
10,875**



AIRPORTS

Asheville Regional
Foothills Regional, Morganton
Rutherford County

Our Work

in Division 13

MAJOR PROJECTS COMPLETED IN 2020

U.S. 19E (YANCEY, MITCHELL COUNTIES)

- ⇒ \$64.9 million, 8-mile project adds one lane each way between Micaville and Spruce Pine with a median, turn lanes and six major bridge improvements
- ⇒ Project provides 30 miles of four-lane highway from I-26 in Madison County to Spruce Pine in Mitchell County
- ⇒ Completed in October 2020

INTERSTATE 40 REHABILITATION (BURKE COUNTY)

- ⇒ Every mile of interstate in Burke County—from McDowell County to Catawba County—has been rehabilitated by the end of 2020 in this \$36 million project.
- ⇒ Replaced guardrails and improved drainage
- ⇒ Improved safety, to enhance and preserve the existing interstate route
- ⇒ Completed in December 2020

ASHEVILLE SIGNAL SYSTEM CONNECTIVITY (BUNCOMBE COUNTY)

- ⇒ \$10.6 million project completed an extensive upgrade to the traffic signal system in the greater Asheville area
- ⇒ System links 285 signalized intersections into one system to optimize traffic flow
- ⇒ Operators in the Mountain TMC control the system on various corridors
- ⇒ Completed in November 2020

INTERSTATE 40 RESURFACING (BUNCOMBE COUNTY)

- ⇒ \$10.8 million project rehabilitated the westernmost seven miles of I-40 in Buncombe County
- ⇒ Improvements included rehabbing the asphalt and multiple bridge decks
- ⇒ Completed in August 2020

MAJOR PROJECTS UNDERWAY IN 2021

LEICESTER HIGHWAY (BUNCOMBE COUNTY)

- ⇒ \$34.9 million project, to widen Leicester Highway (N.C. 63) to four lanes between Gilbert Road and Newfound Road
- ⇒ Improves safety around Leicester Elementary School
- ⇒ Eliminates the “Leicester Dip,” a steep grade with a high crash rate
- ⇒ Completion scheduled in 2021

MINERAL SPRINGS ROAD INTERCHANGE (BURKE COUNTY)

- ⇒ A \$12.4 project to remodel Exit 112 of I-40 in Burke County
- ⇒ Replacing a pair of two-lane bridges
- ⇒ Completion scheduled in 2021

SUGARHILL ROAD AT I-40 INTERCHANGE (MCDOWELL COUNTY)

- ⇒ A \$12.4 project to remodel Exit 81 of I-40 in McDowell County
- ⇒ Replaces and widens bridge over I-40
- ⇒ Widens Sugarhill Road to three lanes from the intersection at the westbound ramps to the intersection at the eastbound ramps
- ⇒ Extends the entrance and exit ramps to I-40
- ⇒ Completion scheduled in 2022

BREVARD ROAD I-26 INTERCHANGE (BUNCOMBE COUNTY)

- ⇒ New design and shape for the Brevard Road exit will continue major improvements around the I-40/I-26 interchange
- ⇒ \$48 million project is part of the vision for the I-26 corridor from South Carolina to Asheville and, eventually with the I-26 connector, up to Tennessee
- ⇒ Modifies the interchange and increases its ability to handle local traffic using I-26 as well as Brevard Road (N.C. 191)
- ⇒ Completion scheduled in 2021

Our Work

in Division 13



STATE TRANSPORTATION IMPROVEMENT PROGRAM **(STIP)** CONTRACTS AWARDED DURING STATE FISCAL YEAR 2019-20 **(FY 2020)**

8
Projects

\$308,174,991
Value

RESURFACING PROJECTS FY 2020

Primary routes: 140.66 lane miles
Cost: \$20,082,009

Secondary roads: 74.55 lane miles
Cost: \$20,938,245

Total: 515.21 lane miles
Total cost: \$51,020,254

MAINTENANCE SPENDING FY 2020:
\$19.9 million

BRIDGES FY 2020

Inspected: 1,157
Rehabilitated: 18
Replaced: 13

DRIVEWAY PERMITS ISSUED FY 2020: 103

SUBDIVISION PLANS REVIEWED FY 2020: 16

PROJECT-RELATED PUBLIC MEETINGS FY 2020: 0

LITTER CLEANUP FY 2020

Roadside litter picked up*: 351,195 pounds
State cost: \$1,147,616

**Combines Contract Litter Removal, NCDOT Forces, Adopt-A-Highway, Sponsor-A-Highway and other volunteers*

WEATHER-RELATED PREPARATION AND CLEANUP FY 2020

Winter weather operations

Brine: 20,000 gallons
Salt: 7,500 tons
Salt/Sand: 1,000 tons

Infrastructure

Health and Safety

DIVISION 13 INFRASTRUCTURE HEALTH



BRIDGE HEALTH INDEX

(percent in good condition) as of July 2020:

Interstate: **89.8**

Primary: **80.9**

Secondary: **72.5**

Total: **75.6**

STRUCTURALLY DEFICIENT BRIDGES

(percent) as of July 2020

Interstate: **3.1**

Primary: **7.5**

Secondary: **16.1**

Total: **13.4**

PAVEMENT CONDITION RATINGS

(percent of pavement miles ranked good) as of December 2019

Interstate: **93.65**

Primary: **82.79**

Secondary: **61.89**

Total: **67.84**

DIVISION 13 HIGHWAY SAFETY RATES FY 2020



TRAVEL VOLUME (IN 100 MVMT*)

5-Year Avg.**: **59.75**

FY 20: **57.44**

TOTAL CRASHES

5-Year Avg.: **13,901**

FY 20: **13,253**

CRASH RATE (PER 100 MVMT)

5-Year Avg.: **232.66**

FY 20: **230.74**

TOTAL FATALITIES

5-Year Avg.: **69**

FY 20: **79**

FATALITY RATE (PER 100 MVMT)

5-Year Avg.: **1.16**

FY 20: **1.38**

TOTAL INJURIES

5-Year Avg.: **5,187**

FY 20: **4,431**

INJURY RATE (PER 100 MVMT)

5-Year Avg.: **86.82**

FY 20: **77.15**

BICYCLE AND PEDESTRIAN FATALITIES FY 2019

Bicycle: **3**

Pedestrian: **10**

Combined: **13**

*100 Million Vehicle Miles of Travel

** 5-year average for fiscal years 2015-2019

The Coming Decade

The State Transportation Improvement Program (STIP) lays out the N.C. Department of Transportation's plan for transportation projects during the next 10 years. The STIP is updated approximately every two years. The 2020-2029 STIP includes **83** projects in Division 13. Among the improvements planned are:

- ⇒ In Buncombe County, rehabilitate I-40 from mile marker 46 to mile marker 50 with construction starting in fiscal year 2022
- ⇒ In Rutherford County, improve the U.S. 221 Rutherfordton Bypass with construction starting in 2022
- ⇒ In Madison County, rehabilitate I-26 from the Tennessee state line to mile marker 9 with construction starting in fiscal year 2023
- ⇒ In Burke County, replace a bridge over Norfolk Southern Railroad on U.S. 64/70 with construction starting in fiscal year 2025
- ⇒ In McDowell County, widen U.S. 221 Business from U.S. 221/N.C.226 to Georgia Avenue with construction starting in fiscal year 2025

2020-2029 STIP PROJECTS FOR DIVISION 13



Aviation projects: 1
Total value: \$7,000,000



Interstate Maintenance projects: 6
Total value: \$67,130,000



Bicycle and Pedestrian projects: 23
Total value: \$43,673,020



Public Transit projects: 41
Total value: \$22,875,000



Bridge projects: 17
Total value: \$81,907,000



Safety projects: 16
Total value: \$1,935,170



Highway projects: 73
Total value: \$1,311,573,980



ALL PROJECTS: 177
Total value: \$1,536,094,170

Contacts

Division 13

Division Engineer Mark T. Gibbs, PE
828-250-3000 | mgibbs@ncdot.gov

Division Project Development Engineer Steve Cannon, PE
828-273-5157 | slcannon@ncdot.gov

Division Project Team Lead Brendan Merithew, PE
828-250-3000 | bwmerithew@ncdot.gov

Division Maintenance Engineer Tim Anderson, PE
828-250-3000 | twanderson@ncdot.gov

Assistant Division Maintenance Engineer Scott Killough
828-250-3000 | skillough@ncdot.gov

Buncombe County Maintenance
11 Old Charlotte Highway, Asheville | 828-298-0397

Burke County Maintenance
2161 Mountain Home Church Road, Morganton | 828-438-6274

Madison County Maintenance
201 State Maintenance Road, Marshall | 828-649-2222

McDowell County Maintenance
3931 N.C 226 South, Marion | 828-803-6190

Mitchell County Maintenance
940 Greenwood Road, Spruce Pine | 828-765-2262

Rutherford County Maintenance
595 Ledbetter Road, Spindale | 828-286-3433

Yancey County Maintenance
30 Bakers Creek Road, Burnsville | 828-682-2441

Division Construction Engineer Randy McKinney, PE
828-250-3000 | rmckinney@ncdot.gov

Assistant Division Construction Engineer Nathan Moneyham, PE
828-250-3000 | nsmoneyham@ncdot.gov

Division Traffic Engineer Anna Henderson, PE
828-250-3000 | aghenderson@ncdot.gov

Division Business Officer Wanda Carver
828-250-3000 | wcarver@ncdot.gov

Public Relations Officer David Uchiyama
828-250-3000 | duchiyama@ncdot.gov



Division of Motor Vehicles

in Division 13 Counties

527,253

Vehicle registrations
as of July 2020

417,457

Drivers licensed as
of July 2020

- Driver License Office
- License Plate Agency

Buncombe County

Driver License Office

1624 Patton Avenue
Asheville
828-782-9600

License Plate Agencies

780 Hendersonville Road, Suite 8
Asheville
828-277-7767

153 Smokey Park Highway, Suite 160-A
Asheville
828-252-8526

Burke County

Driver License Office

115 Government Drive
Morganton
828-438-6294

License Plate Agency

603 South College St.
Morganton
828-437-4505

Madison County

Temporary Driver License Office

107 Elizabeth Lane
Marshall
919-715-7000

License Plate Agency

133 South Main St., Suite 102
Marshall
828-649-3528

McDowell County

Driver License Office

3975 N.C. 226 South
Marion
828-652-5828

License Plate Agency

60 East Court St.
Marion
828-652-0179

Mitchell County

Driver License Office

1032 Oak Ave.
Spruce Pine
828-766-7649

License Plate Agency

11889 N.C. 226 South
Spruce Pine
828-756-2926

Rutherford County

Driver License Office

596 Withrow Road
Forest City
828-286-2973

License Plate Agency

1639 U.S. Hwy 74A Bypass, Suite 140
Spindale
828-287-3600

Yancey County

Driver License Office

116 North Main St.
Burnsville
828-682-9619

License Plate Agency

14 Town Square
Burnsville
828-682-2312

Local Public Transportation

in Division 13

Local and regional transit systems provide public transportation service for residents of all 100 North Carolina counties. The NCDOT Public Transportation Division manages federal and state public transportation grant programs and supports transit agencies with planning, training and technical assistance.

Buncombe County

ART — Asheville Redefines Transit
ashevillenc.gov/departments/transit/
828-253-5961

Mountain Mobility
buncombecounty.org/governing/depts/Transportation/
828-250-6750

Burke County

Greenway Public Transportation
mygreenway.org
828-464-9444

Madison County

Madison County Transportation Authority
madisoncountync.gov/transportation.php
828-649-2219

McDowell County

McDowell Transit
mcdowellcountyncdss.org/economic-services/transportation-assistance
828-659-0634

Mitchell County

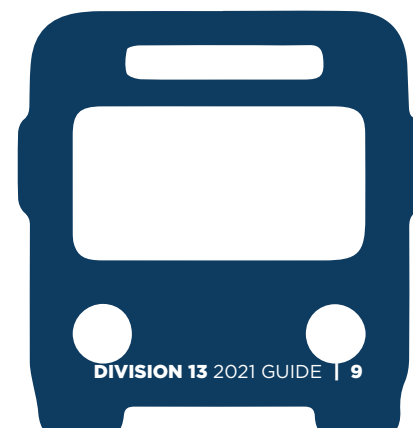
Mitchell County Transportation Authority
mitchellcounty.org/departments/transportation.html
828-688-4715

Rutherford County

Rutherford County Transit
rutherfordcountync.gov/departments/transit/index.php
828-287-6339

Yancey County

Yancey County Transportation Authority
yanceycountync.gov/index.php/departments/transportation-authority
828-682-6144



Rural and Metropolitan Planning Organizations

Division 13

Rural Planning Organizations (RPOs) and Metropolitan Planning Organizations (MPOs) are North Carolina's local transportation planning agencies. They develop transportation projects for their communities and help NCDOT decide which projects will receive public funding.

FRENCH BROAD RIVER MPO

Tristan Winkler, Director

339 New Leicester Highway, Suite 140 | Asheville, N.C. 28806

fbrmpo.org

828-251-6622 | tristan@landofsky.org

GREATER HICKORY MPO

Brian D. Horton, AICP, Secretary/Transportation Planning Manager

P.O. Box 9026 | Hickory, N.C. 28603

1880 2nd Avenue NW | Hickory, N.C. 28601

wpcog.org/metropolitan-planning-org

828-485-4225 | brian.horton@wpcog.org

HIGH COUNTRY RPO

David Graham, Transportation Planner

468 New Market Blvd. | Boone, N.C. 28607

hccog.org/planning/#Transport

828-265-5434 | dgraham@regiond.org

ISOTHERMAL RPO

Karyl Fuller, GISP, CZO, RPO Director

111 W. Court St. | Rutherfordton, N.C. 28139

isothermalrpo.org

828-351-2331 | kfuller@regionc.org

LAND OF SKY RPO

Vicki L. Eastland, RPO Coordinator

339 New Leicester Hwy., Suite 140

Asheville, N.C. 28806

landofskyrpo.org

828-251-6622 | vicki.eastland@landofsky.org

FOR CONSTITUENT INQUIRIES

constituent.services@ncdot.gov

NCDOT MULTI-MODAL DIVISION CONTACTS

AVIATION DIVISION

Bobby Walston, Director

bwalston@ncdot.gov | 919-814-0550

FERRY DIVISION

Harold Thomas, Director

hbthomas@ncdot.gov | 252-423-5102

INTEGRATED MOBILITY DIVISION

(Bicycle & Pedestrian/Public Transportation)

Ryan Brumfield, Interim Director

rmbumfield@ncdot.gov | 919-707-4674

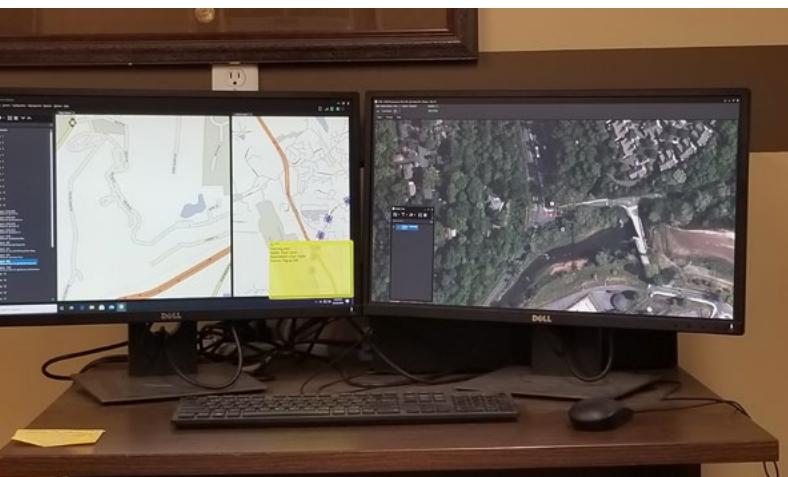
RAIL DIVISION

Jason Orthner, Director

jorthner@ncdot.gov | 919-707-4700

Headlines

Division 13



TRAFFIC SIGNAL SYSTEM STRENGTHENED

NCDOT completed an extensive upgrade to the traffic signal system in the greater Asheville area. This comprehensive system links 285 signalized intersections into one system to optimize traffic flow on strategic corridors in the area. Operators in the Mountain Traffic Management System office are able to monitor various corridors and adjust signal timing in the event of an emergency or major congestion. This \$10.6 million project took three years and includes upgrades to hardware such as signal boxes and software in the TMC, as well as the addition of 33 real-time traffic cameras to help drivers on major Asheville routes.

I-26 WIDENING

The region's largest construction project in 20 years is underway to widen Interstate 26 for 18 miles from I-40 in Buncombe County to U.S. 64 in Henderson County. Work started in 2019 and will continue into 2024 to reduce traffic congestion and improve the interstate's ability to handle future traffic. The Buncombe County section, with a cost of \$263 million, will be widened to four lanes in each direction. I-26 carries nearly 85,000 vehicles per day in Buncombe County.



MOUNTAIN HIGHWAY EXPANSION COMPLETE

NCDOT officials announced in October the completion of a major project to widen eight miles of U.S. 19E from its intersection with N.C. 80 in Yancey County to the multi-lane section of highway just west of Spruce Pine in Mitchell County. The end result is an improved transportation network in the mountains of Division 13. Trucks and tourists can now cruise on four lanes from Interstate 26 in Madison County, through all of Yancey County and into Spruce Pine.

N.C. DEPARTMENT OF TRANSPORTATION

1 S. Wilmington St.
1501 Mail Service Center
Raleigh, N.C. 27699-1501
1-877-DOT-4YOU (1-877-368-4968)
ncdot.gov

N.C. Division of Motor Vehicles: 919-715-7000

Real-time traffic information: DriveNC.gov or dial 511

NCDOT AND DIVISION 13 SOCIAL MEDIA CHANNELS

FACEBOOK

@NCDOT

TWITTER

@NCDOT

@NCDOT_ASHEVILLE

INSTAGRAM

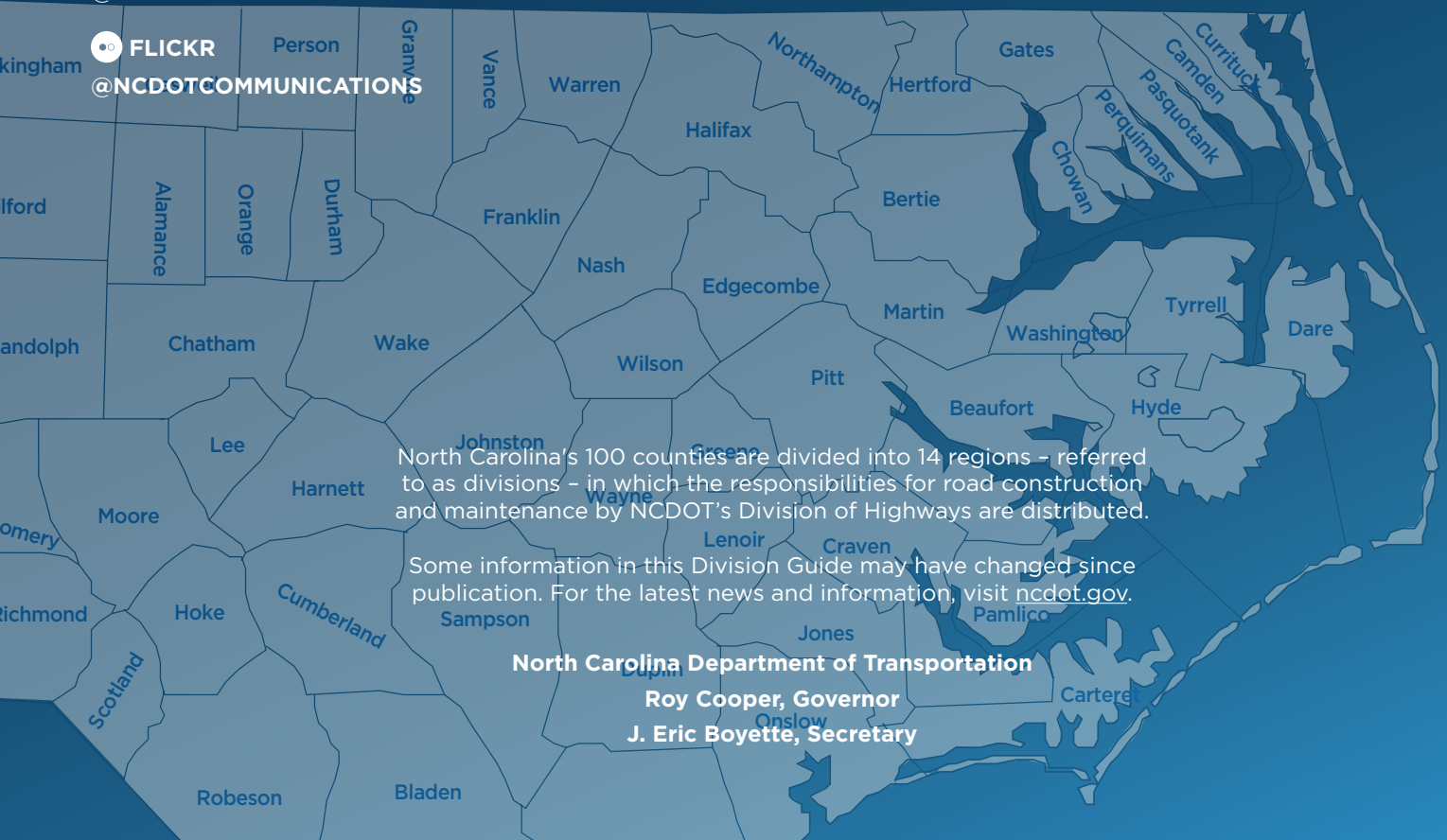
@NCDOTCOM

YOUTUBE

@NCDOTCOMMUNICATIONS

FLICKR

@NCDOTCOMMUNICATIONS



North Carolina's 100 counties are divided into 14 regions - referred to as divisions - in which the responsibilities for road construction and maintenance by NCDOT's Division of Highways are distributed.

Some information in this Division Guide may have changed since publication. For the latest news and information, visit ncdot.gov.

North Carolina Department of Transportation

Roy Cooper, Governor

J. Eric Boyette, Secretary