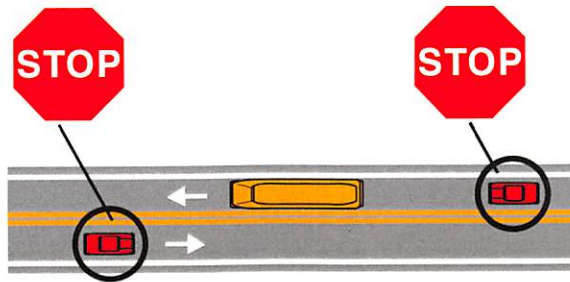
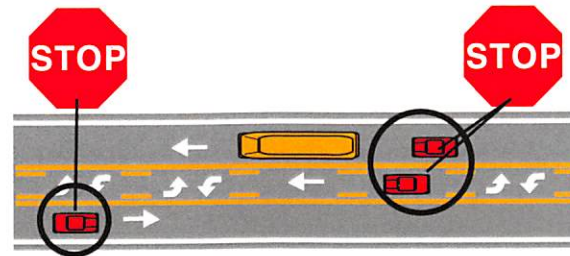


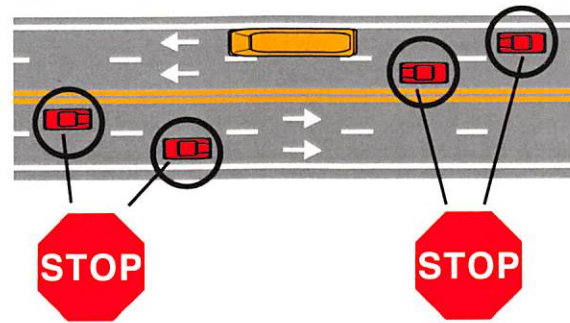
North Carolina **SCHOOL BUS STOP LAW**



Two-lane roadway: When school bus stops for passengers, all traffic from both directions must stop.

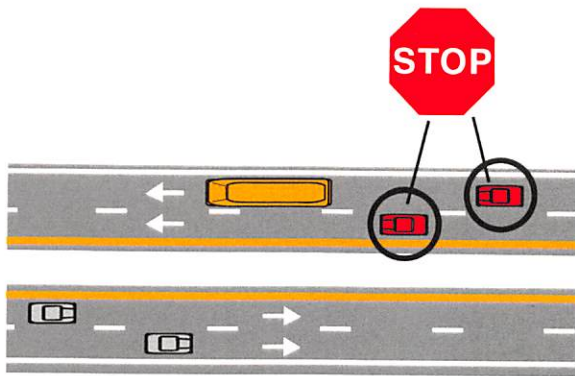


Two-lane roadway with a center turning lane: When school bus stops for passengers, all traffic from both directions must stop.

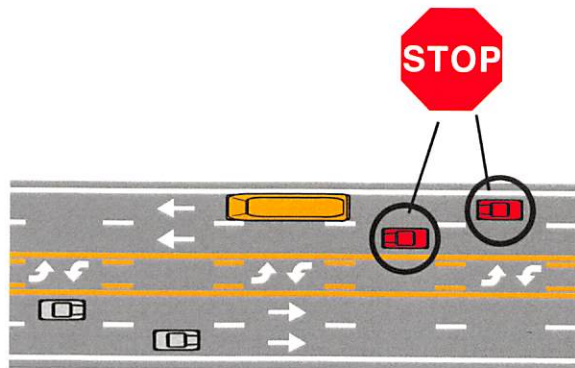


Four-lane roadway without a median separation: When school bus stops for passengers, all traffic from both directions must stop.

More information on reverse.



Any divided highway with a median separation: When school bus stops for passengers, only traffic following the bus must stop.



Roadway of four lanes or more with a center turning lane: When school bus stops for passengers, only traffic following the bus must stop.



**N.C. Division of Motor Vehicles
School Bus & Traffic Safety**

3117 Mail Service Center
Raleigh, NC 27697-3117

Phone: (919) 715-7000

Fax: (919) 715-3306

www.ncdot.gov/dmv

*50,000 copies of this public document were printed
at a cost of \$9,076.51, or \$0.18 per copy. (08/19)*