

PRELIMINARY PLANS
DO NOT USE FOR CONSTRUCTION
INCOMPLETE PLANS
DO NOT USE FOR R/W ACQUISITION

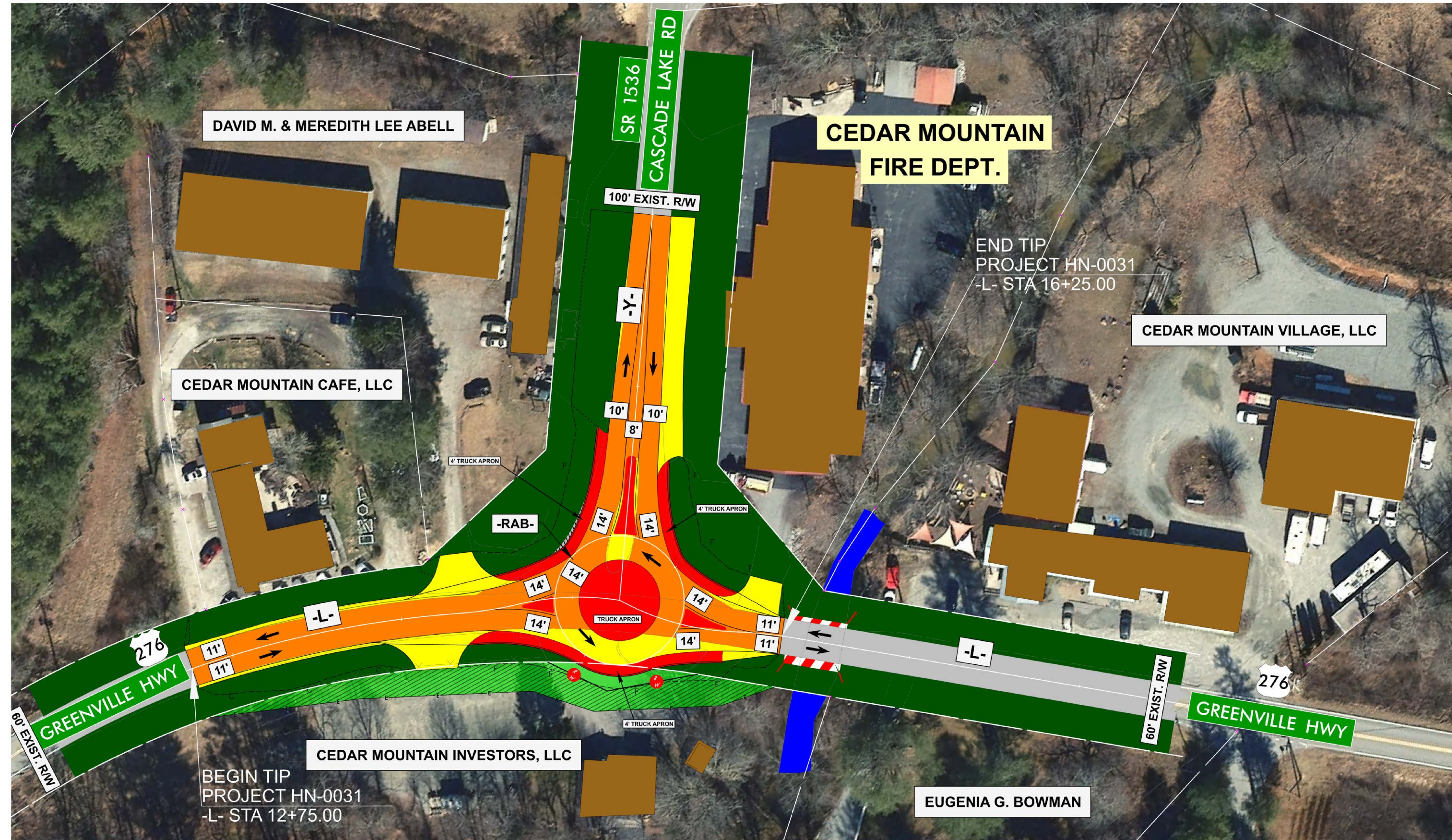
PUBLIC MEETING MAP
PROJECT 51513.11 (HN-0031)
F.A. PROJECT 5151301
TRANSYLVANIA COUNTY
US 276 (GREENVILLE HWY)
AT SR 1536 (CASCADE LAKE RD)
ROLL 1 OF 1 04/2025

DESIGN DATA

| | | |
|-------------------|---|----------------|
| Functional Class. | = | Minor Arterial |
| ADT 2026 | = | 2,480 |
| ADT 2050 | = | 3,140 |

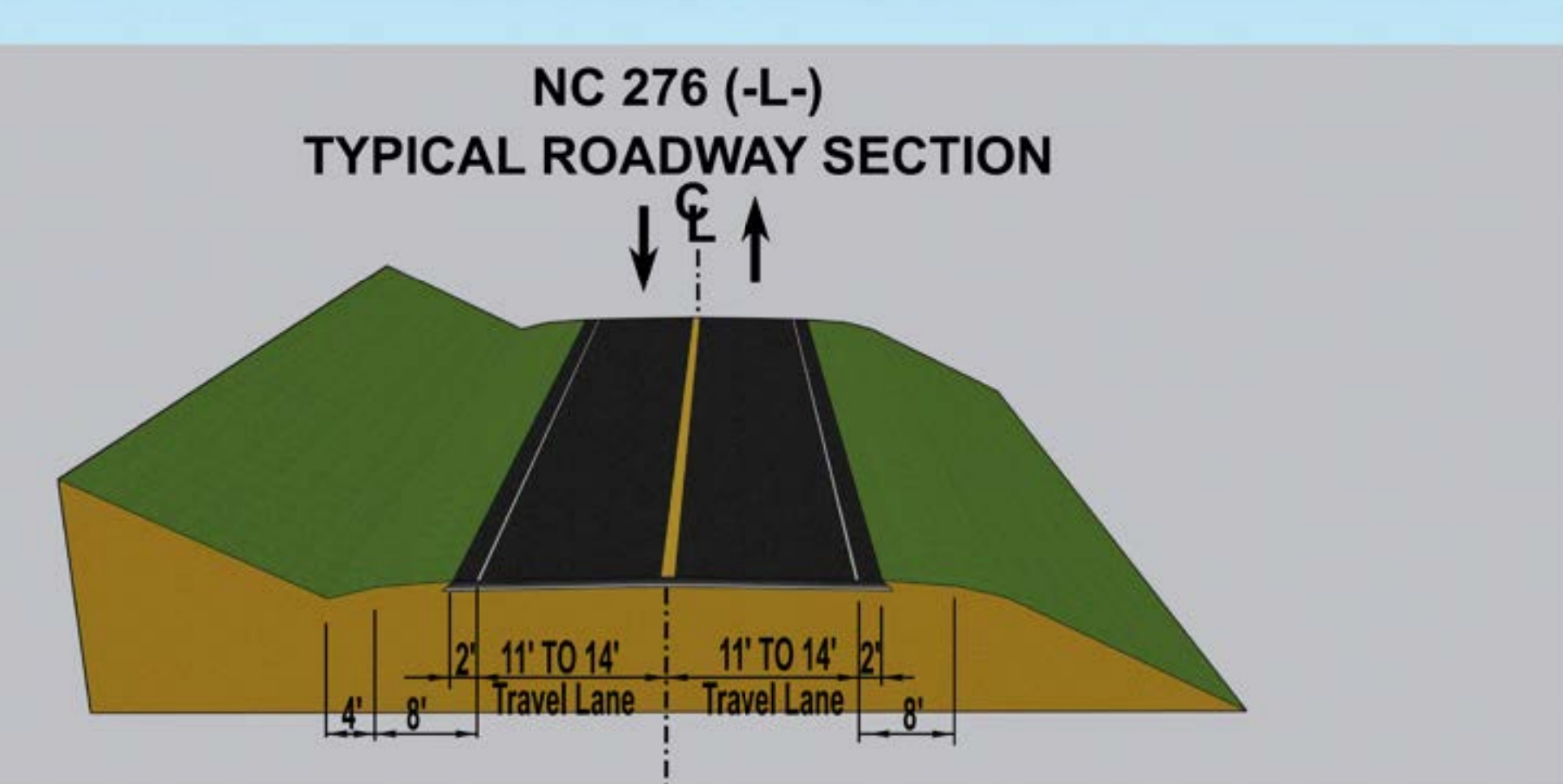


AERIAL DATA SOURCE:
NC ONE MAP FEB 2023



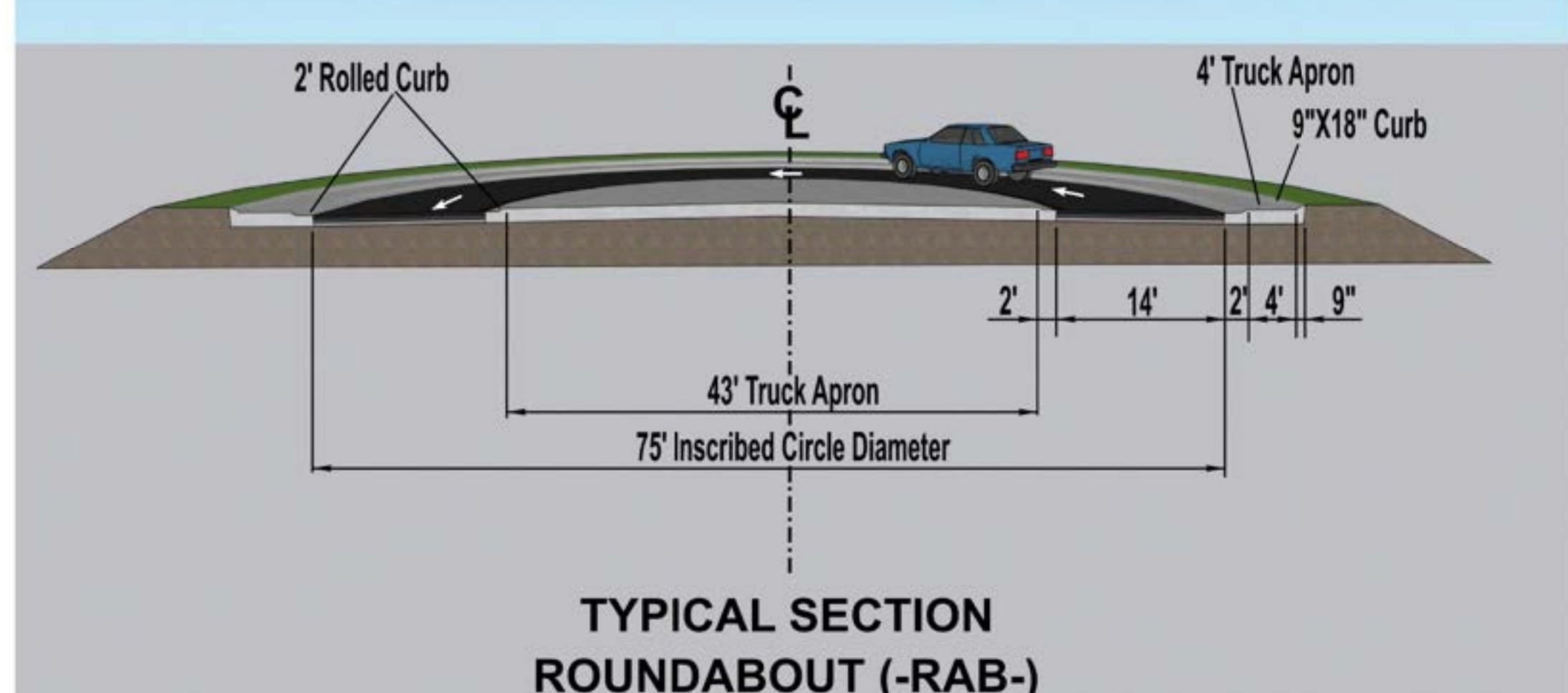
PUBLIC MEETING MAP
PROJECT 51513.11 (HN-0031)
F.A. PROJECT 5151301
TRANSYLVANIA COUNTY
US 276 (GREENVILLE HWY)
AT SR 1536 (CASCADE LAKE RD)
ROLL 1 OF 1 04/2025

PUBLIC MEETING MAP
PROJECT 51513.11 (HN-0031)
F.A. PROJECT 5151301
TRANSYLVANIA COUNTY
US 276 (GREENVILLE HWY)
AT SR 1536 (CASCADE LAKE RD)
ROLL 1 OF 1 04/2025



UTILITY INFORMATION
TO PROVIDE GREATER VISUAL CLARITY, EXISTING AND PROPOSED UTILITIES ARE NOT SHOWN ON THESE MAPS OR ON OTHER DISPLAYS. THE UTILITY INFORMATION SHOWN ON THESE MAPS IS LIMITED TO LOCATIONS OF MAJOR EXISTING AND POTENTIAL UTILITY EASEMENTS. THE DESIGN SHOWN ON THESE MAPS, INCLUDING UTILITY EASEMENTS, ARE PRELIMINARY AND SUBJECT TO CHANGE.

IMPACTS AND DRIVEWAY TIES:
DRIVEWAYS ARE APPROXIMATE LIMITS OF CONSTRUCTION AND THEIR IMPACTS ON THIS HEARING MAP ARE BASED ON PRELIMINARY DESIGNS AND PRELIMINARY GROUND SURVEYS. DURING THE FINAL DESIGN STAGE, DESIGNERS WILL ATTEMPT TO MINIMIZE IMPACTS WHERE FEASIBLE USING FINAL GROUND SURVEYS. DRIVEWAYS LOCATIONS WILL ALSO BE DETERMINED DURING FINAL DESIGN USING FINAL SURVEYS.



LEGEND

- BUILDINGS
- EXISTING RIGHT OF WAY
- PROPOSED RIGHT OF WAY
- PROPOSED EASEMENTS (DRAINAGE, CONSTRUCTION, AND UTILITY)
- EXISTING ROADWAY
- EXISTING ROADWAY TO BE REMOVED
- EXISTING ROADWAY TO BE RESURFACED
- PROPOSED ROADWAY
- PROPOSED ISLAND, CURB AND GUTTER, AND TRUCK APRON
- EXISTING STRUCTURES
- LAKES, RIVER, STREAMS AND PONDS
- PROPERTY LINES