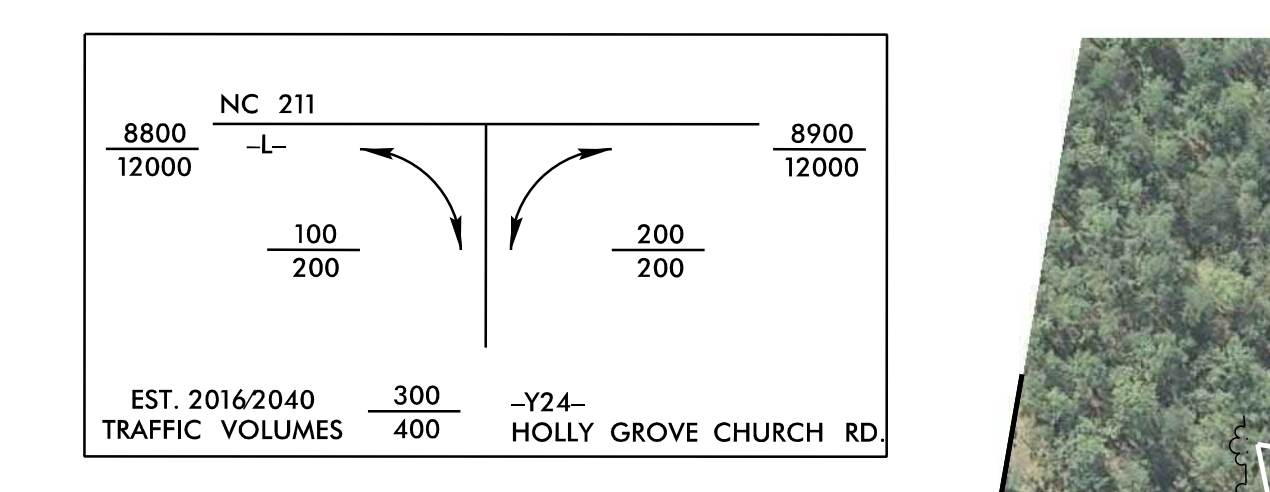


LEGEND

- BUILDINGS
- EXISTING RIGHT OF WAY
- PROPOSED RIGHT OF WAY
- PROPOSED EASEMENTS (DRAINAGE, CONSTRUCTION, AND UTILITY)
- EXISTING ROADWAY
- EXISTING ROADWAY TO BE REMOVED
- EXISTING ROADWAY TO BE RESURFACED
- PROPOSED ROADWAY
- PROPOSED STRUCTURES, ISLAND, CURB AND GUTTER, SIDEWALK
- EXISTING STRUCTURES, ISLAND, CURB AND GUTTER, SIDEWALK TO BE RETAINED
- LAKES, RIVER, STREAMS AND PONDS
- EXISTING UTILITY EASEMENT
- RAILROAD RIGHT OF WAY
- CEMETERIES
- HISTORIC PROPERTY BOUNDARY
- PRESENT ADT
- FUTURE ADT
- EXISTING TRAFFIC SIGNAL
- PROPOSED TRAFFIC SIGNAL
- WETLAND LIMITS BOUNDARY



PUBLIC MEETING MAP

PROJECT 50218.1.1 (R-5726)

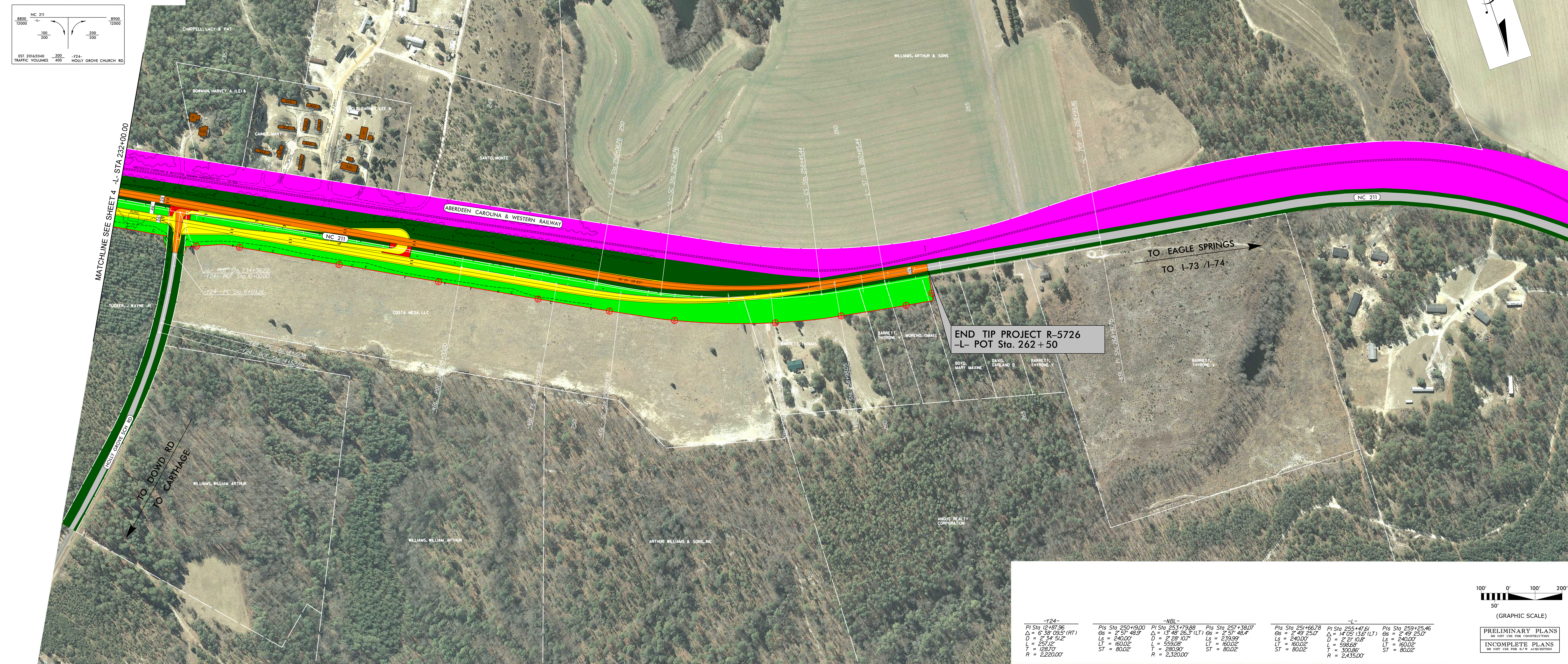
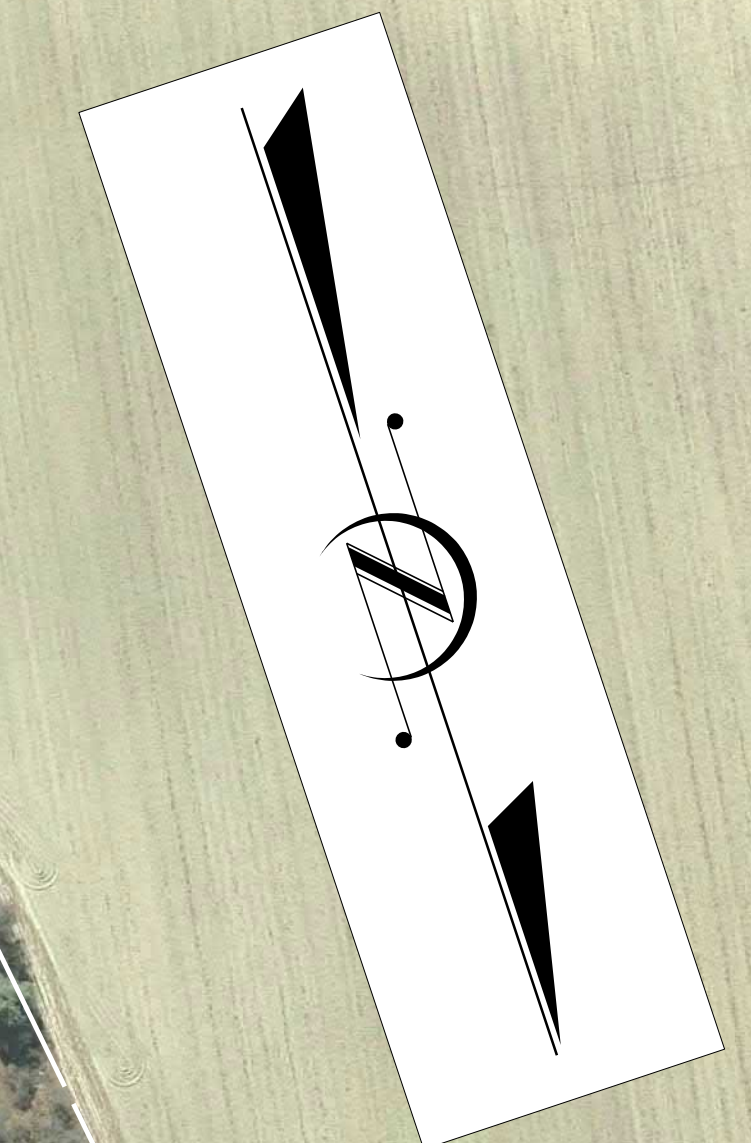
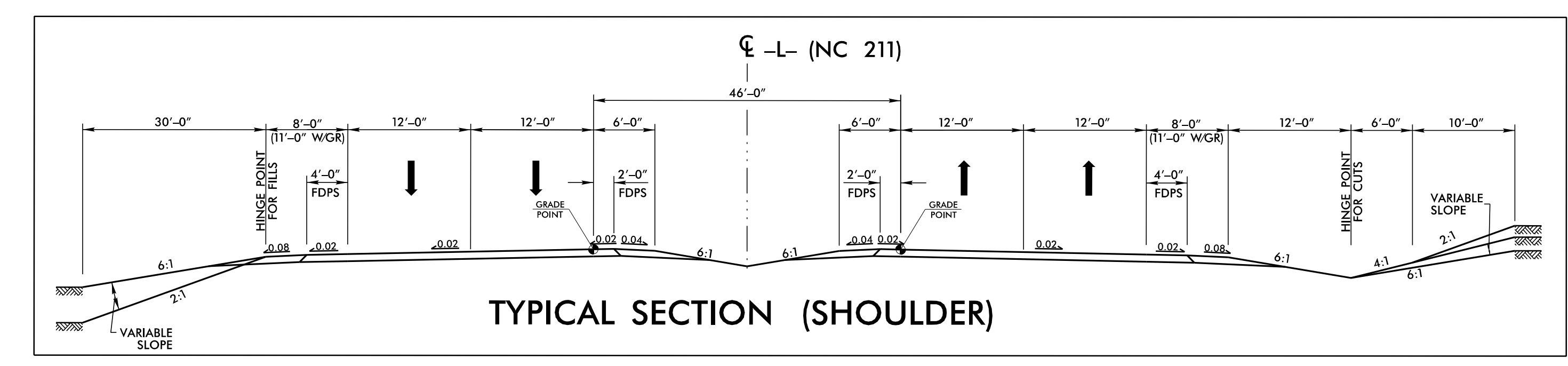
MOORE COUNTY

NC 211 FROM NC 73 IN WEST END TO SR 1241 (HOLLY GROVE SCHOOL RD)

AUGUST 2017 ROLL 5 OF 5

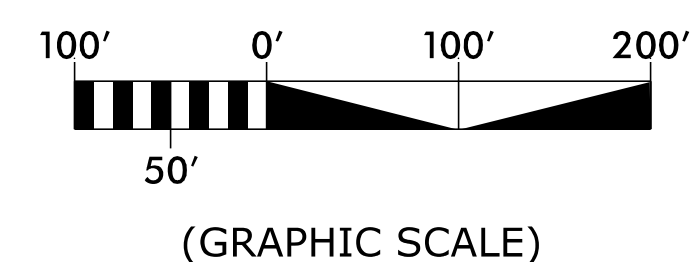
SEGMENT B DESIGN DATA

FUNCTIONAL CLASSIFICATION = URBAN MINOR ARTERIAL
DESIGN SPEED = 50 MPH /60 MPH
MAX. SUPERELEV. = 0.04 /0.08



END TIP PROJECT R-5726
-L- POT Sta. 262+50

-Y24-	-NBL-	-L-
PI Sta 12+87.96 Δ = 6° 38' 09.5" (RT) D = 2° 34' 31.2" L = 257.12' T = 126.70' R = 2,220.00'	PI Sta 253+79.88 Δ = 13° 48' 26.3" (LT) D = 2° 28' 10.7" L = 559.08' T = 280.50' R = 2,320.00'	PI Sta 255+47.61 Δ = 14° 05' 13.6" (LT) D = 2° 21' 10.8" L = 598.68' T = 300.86' R = 2,435.00'



PRELIMINARY PLANS
DO NOT USE FOR CONSTRUCTION
INCOMPLETE PLANS
DO NOT USE FOR R/W ACQUISITION