

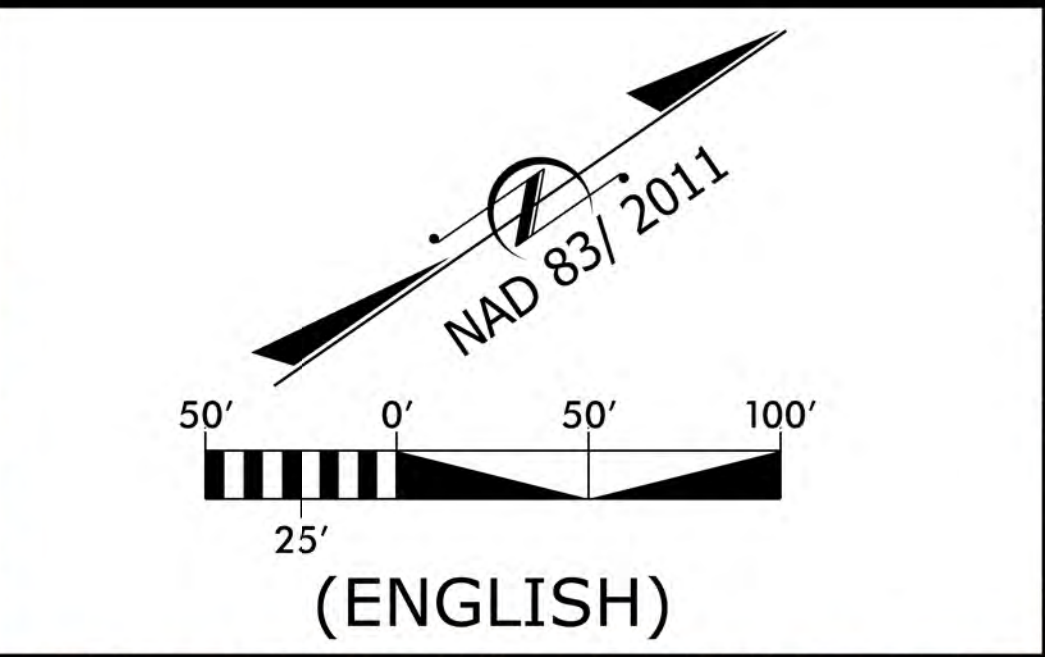
DESIGN PUBLIC MEETING MAP
 PROJECT WBS 48342.1.1 (R-5879)
MARTIN COUNTY
 US-13/US-17 AT US-17 BUS
 (MAIN STREET) IN WILLIAMSTON
 - IMPROVE INTERSECTION
 RCI ALTERNATIVE
 JANUARY 2025

DESIGN PUBLIC MEETING MAP
 PROJECT WBS 48342.1.1 (R-5879)
MARTIN COUNTY
 US-13/US-17 AT US-17 BUS
 (MAIN STREET) IN WILLIAMSTON
 - IMPROVE INTERSECTION
 RCI ALTERNATIVE
 JANUARY 2025

DRIVEWAY NOTE:
 The limits of construction and their impacts shown on this meeting map are based on preliminary designs and survey information. During the final design stage efforts to minimize impacts, where feasible, will be made using final survey information. Driveway locations will also be determined during final design.

UTILITY INFORMATION:
 To provide greater visual clarity existing and proposed utilities are not shown on these maps or on other displays. The utility information shown on these maps is limited to locations of major existing or potential utility easements. The designs shown on these maps, including utility easements, are preliminary and are subject to change.

NOTE:
 Full Control of Access is defined as connections to a facility provided only via ramps at interchanges. All cross-streets are grade-separated. No private driveway connections are allowed.

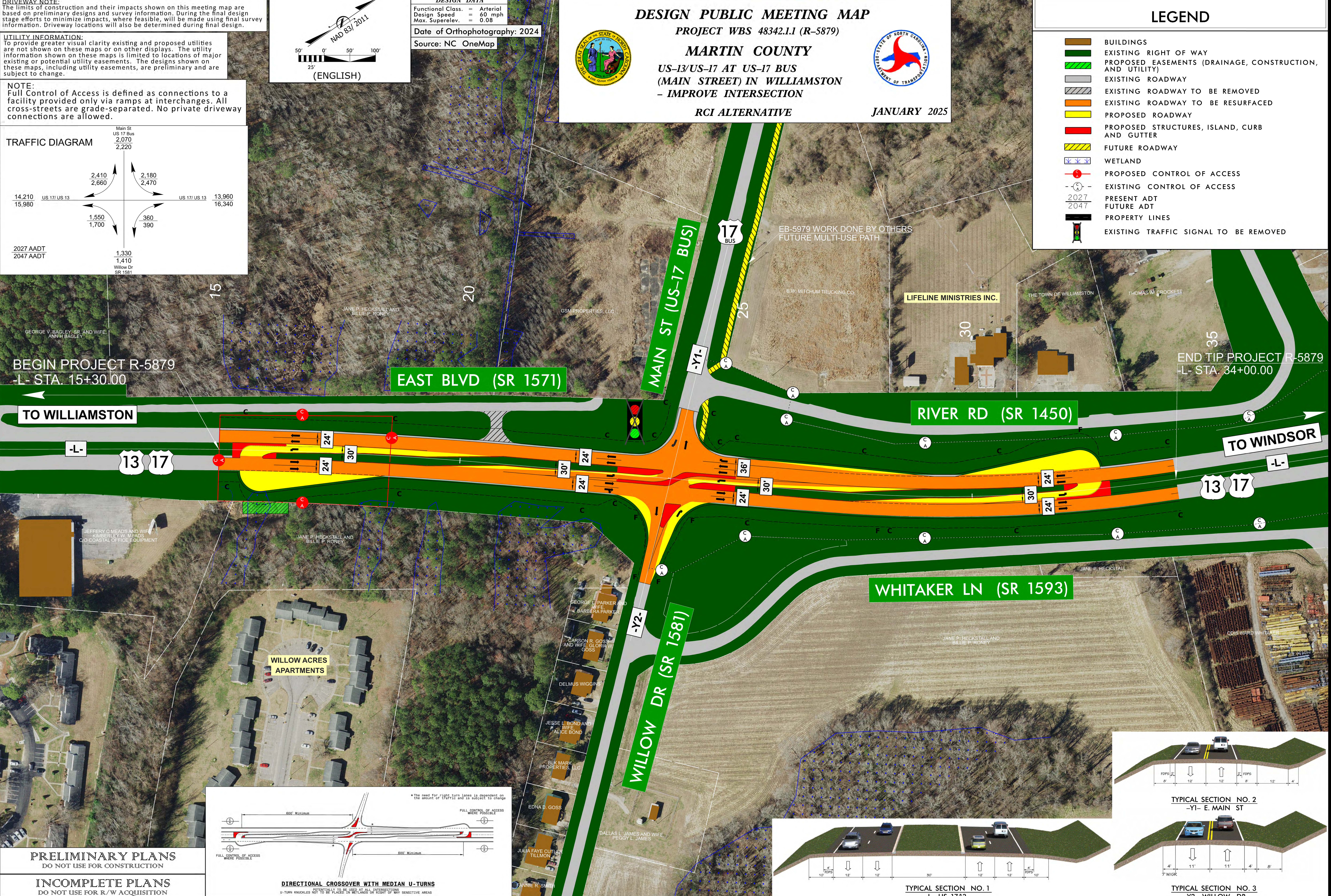
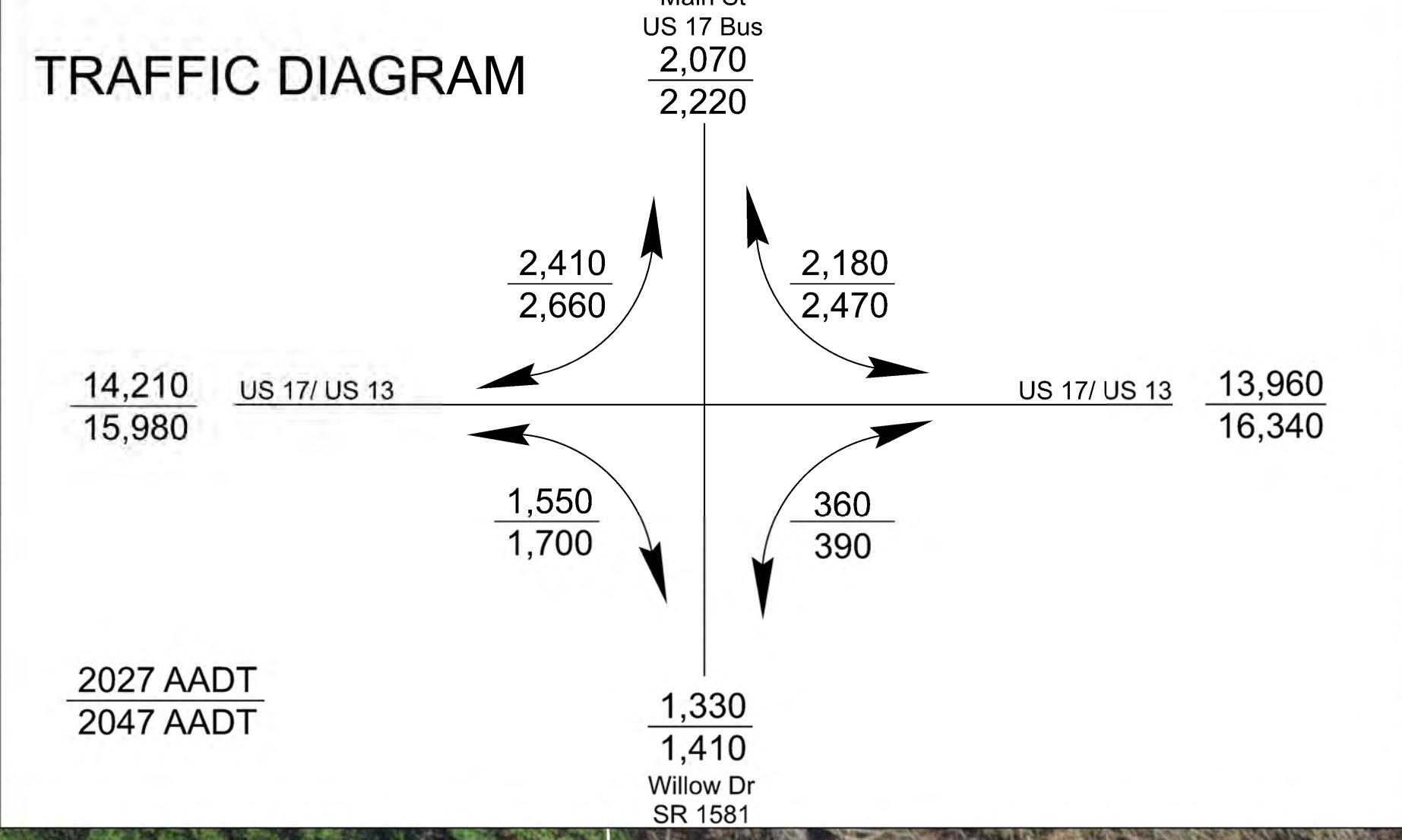


DESIGN DATA
 Functional Class. = Arterial
 Design Speed = 60 mph
 Max. Superelev. = 0.08
 Date of Orthophotography: 2024
 Source: NC OneMap

DESIGN PUBLIC MEETING MAP
 PROJECT WBS 48342.1.1 (R-5879)
MARTIN COUNTY
 US-13/US-17 AT US-17 BUS
 (MAIN STREET) IN WILLIAMSTON
 - IMPROVE INTERSECTION
 RCI ALTERNATIVE
 JANUARY 2025

LEGEND

- BUILDINGS
- EXISTING RIGHT OF WAY
- PROPOSED EASEMENTS (DRAINAGE, CONSTRUCTION, AND UTILITY)
- EXISTING ROADWAY
- EXISTING ROADWAY TO BE REMOVED
- EXISTING ROADWAY TO BE RESURFACED
- PROPOSED ROADWAY
- PROPOSED STRUCTURES, ISLAND, CURB AND GUTTER
- FUTURE ROADWAY
- WETLAND
- PROPOSED CONTROL OF ACCESS
- EXISTING CONTROL OF ACCESS
- PRESENT ADT
- FUTURE ADT
- PROPERTY LINES
- EXISTING TRAFFIC SIGNAL TO BE REMOVED



PRELIMINARY PLANS
 DO NOT USE FOR CONSTRUCTION

INCOMPLETE PLANS
 DO NOT USE FOR R/W ACQUISITION

