

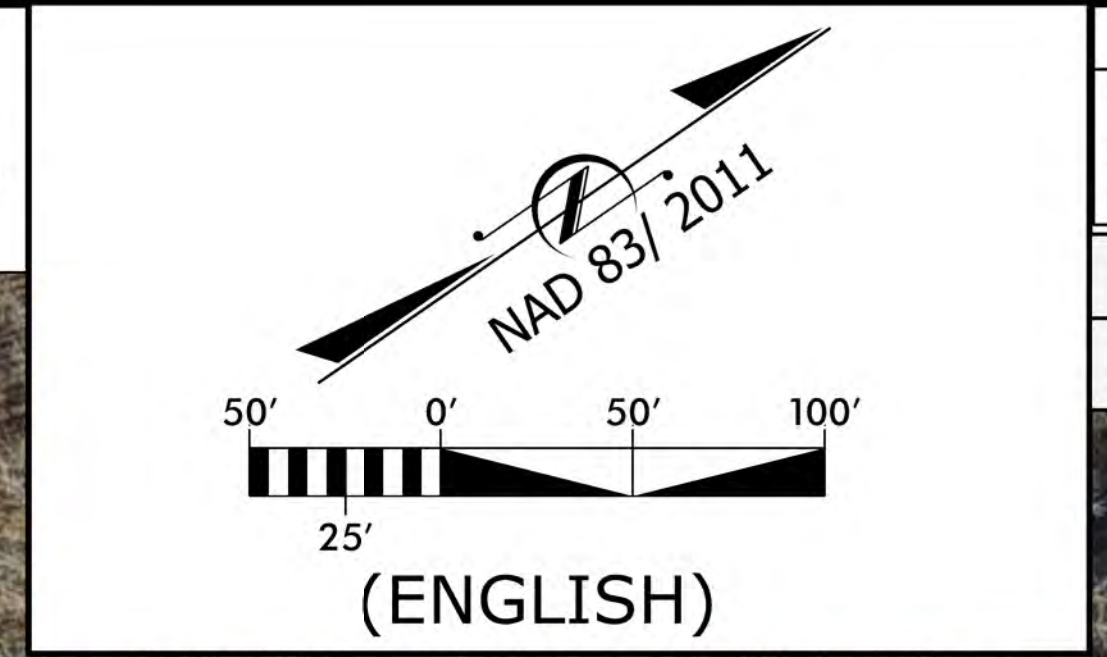
**DESIGN PUBLIC MEETING MAP**  
 PROJECT WBS 48342.1.1 (R-5879)  
**MARTIN COUNTY**  
 US-13/US-17 AT US-17 BUS  
 (MAIN STREET) IN WILLIAMSTON  
 - IMPROVE INTERSECTION  
 MICHIGAN LEFT ALTERNATIVE  
 JANUARY 2025

**DESIGN PUBLIC MEETING MAP**  
 PROJECT WBS 48342.1.1 (R-5879)  
**MARTIN COUNTY**  
 US-13/US-17 AT US-17 BUS  
 (MAIN STREET) IN WILLIAMSTON  
 - IMPROVE INTERSECTION  
 MICHIGAN LEFT ALTERNATIVE  
 JANUARY 2025

**DRIVEWAY NOTE:**  
 The limits of construction and their impacts shown on this meeting map are based on preliminary designs and survey information. During the final design stage efforts to minimize impacts, where feasible, will be made using final survey information. Driveway locations will also be determined during final design.

**UTILITY INFORMATION:**  
 To provide greater visual clarity existing and proposed utilities are not shown on these maps or on other displays. The utility information shown on these maps is limited to locations of major existing or potential utility easements. The designs shown on these maps, including utility easements, are preliminary and are subject to change.

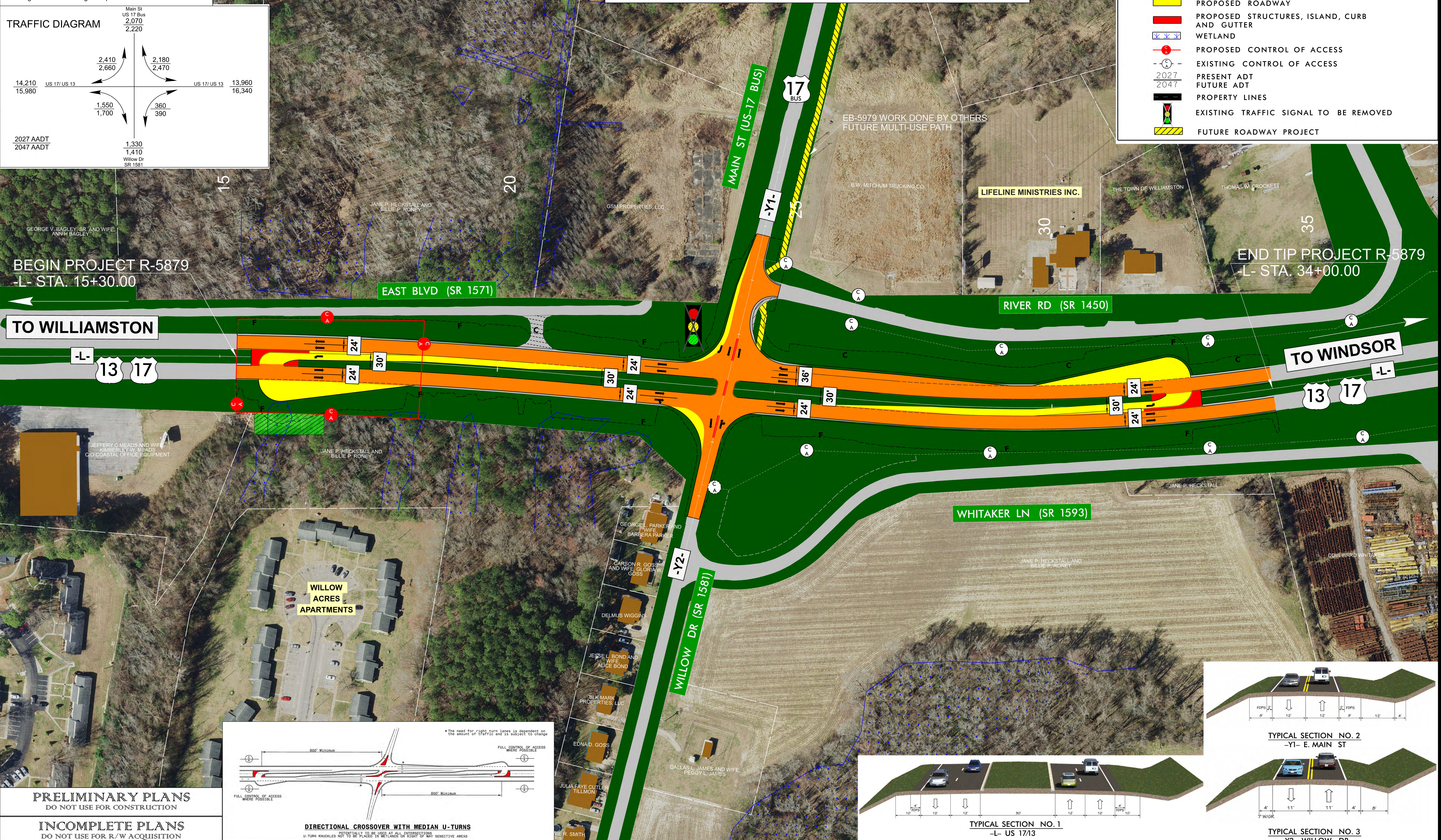
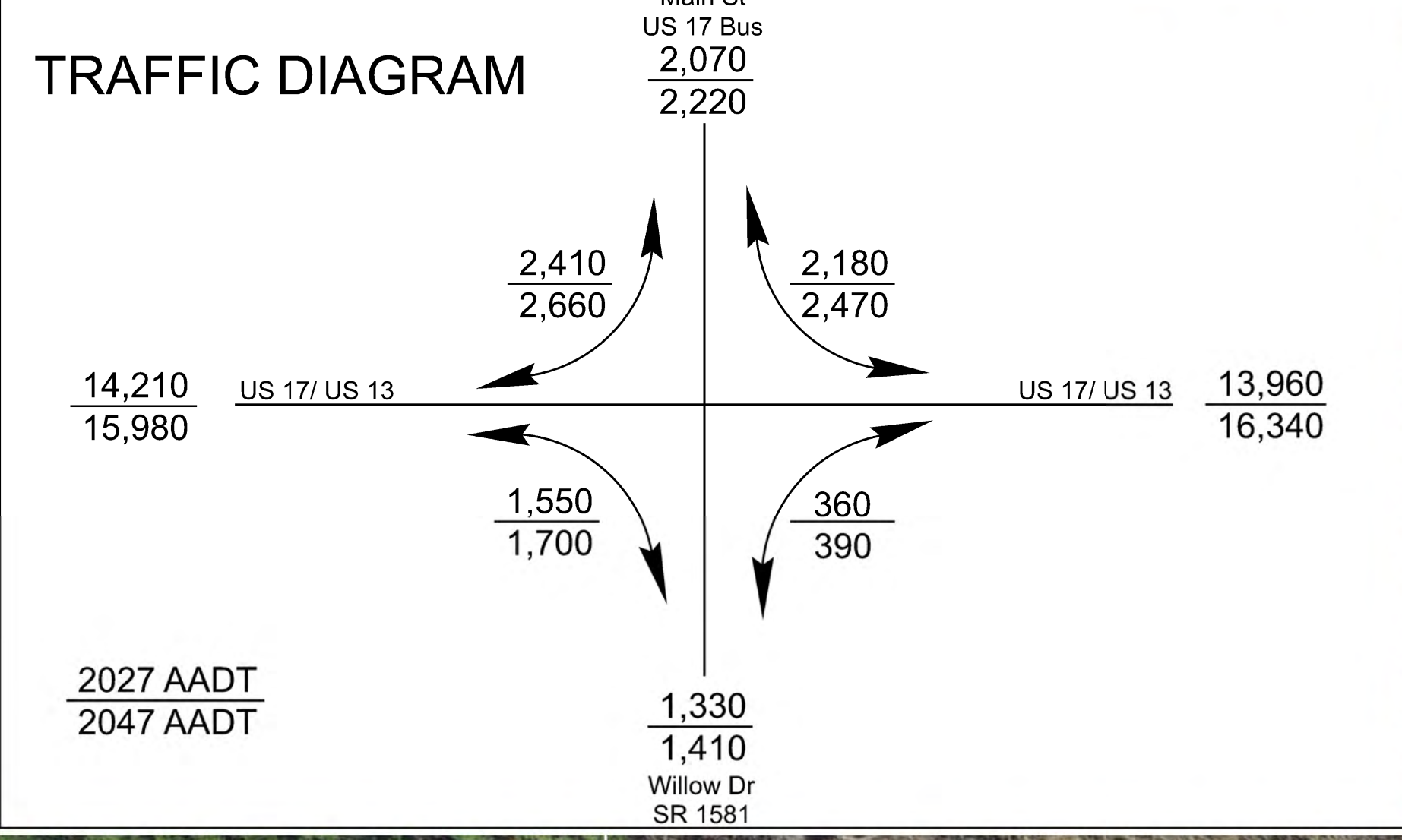
**PARTIAL CONTROL OF ACCESS NOTE:**  
 Partial Control of Access is defined as connections to a facility provided via ramps at interchanges, at-grade intersections, and private driveways. Private driveway connections are normally defined as a maximum of one connection per parcel. One connection is defined as one ingress and one egress point.



**DESIGN DATA**  
 Functional Class. = Arterial  
 Design Speed = 60 mph  
 Max. Superelev. = 0.08  
 Date of Orthophotography: 2024  
 Source: NC OneMap

**DESIGN PUBLIC MEETING MAP**  
 PROJECT WBS 48342.1.1 (R-5879)  
**MARTIN COUNTY**  
 US-13/US-17 AT US-17 BUS  
 (MAIN STREET) IN WILLIAMSTON  
 - IMPROVE INTERSECTION  
 MICHIGAN LEFT ALTERNATIVE      JANUARY 2025

LEGEND	
	BUILDINGS
	EXISTING RIGHT OF WAY
	PROPOSED EASEMENTS (DRAINAGE, CONSTRUCTION, AND UTILITY)
	EXISTING ROADWAY
	EXISTING ROADWAY TO BE REMOVED
	EXISTING ROADWAY TO BE RESURFACED
	PROPOSED ROADWAY
	PROPOSED STRUCTURES, ISLAND, CURB AND GUTTER
	WETLAND
	PROPOSED CONTROL OF ACCESS
	EXISTING CONTROL OF ACCESS
	PRESENT ADT
	FUTURE ADT
	PROPERTY LINES
	EXISTING TRAFFIC SIGNAL TO BE REMOVED
	FUTURE ROADWAY PROJECT



**PRELIMINARY PLANS**  
 DO NOT USE FOR CONSTRUCTION

**INCOMPLETE PLANS**  
 DO NOT USE FOR R/W ACQUISITION

