
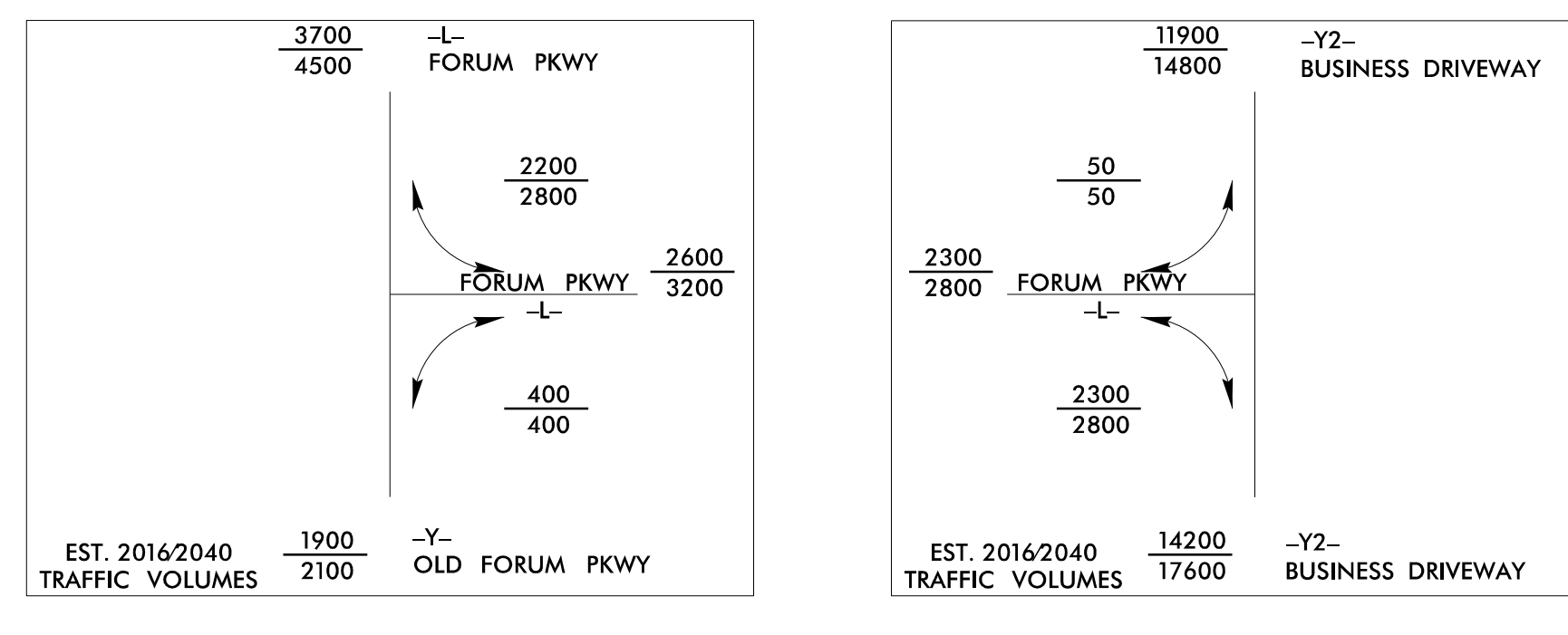
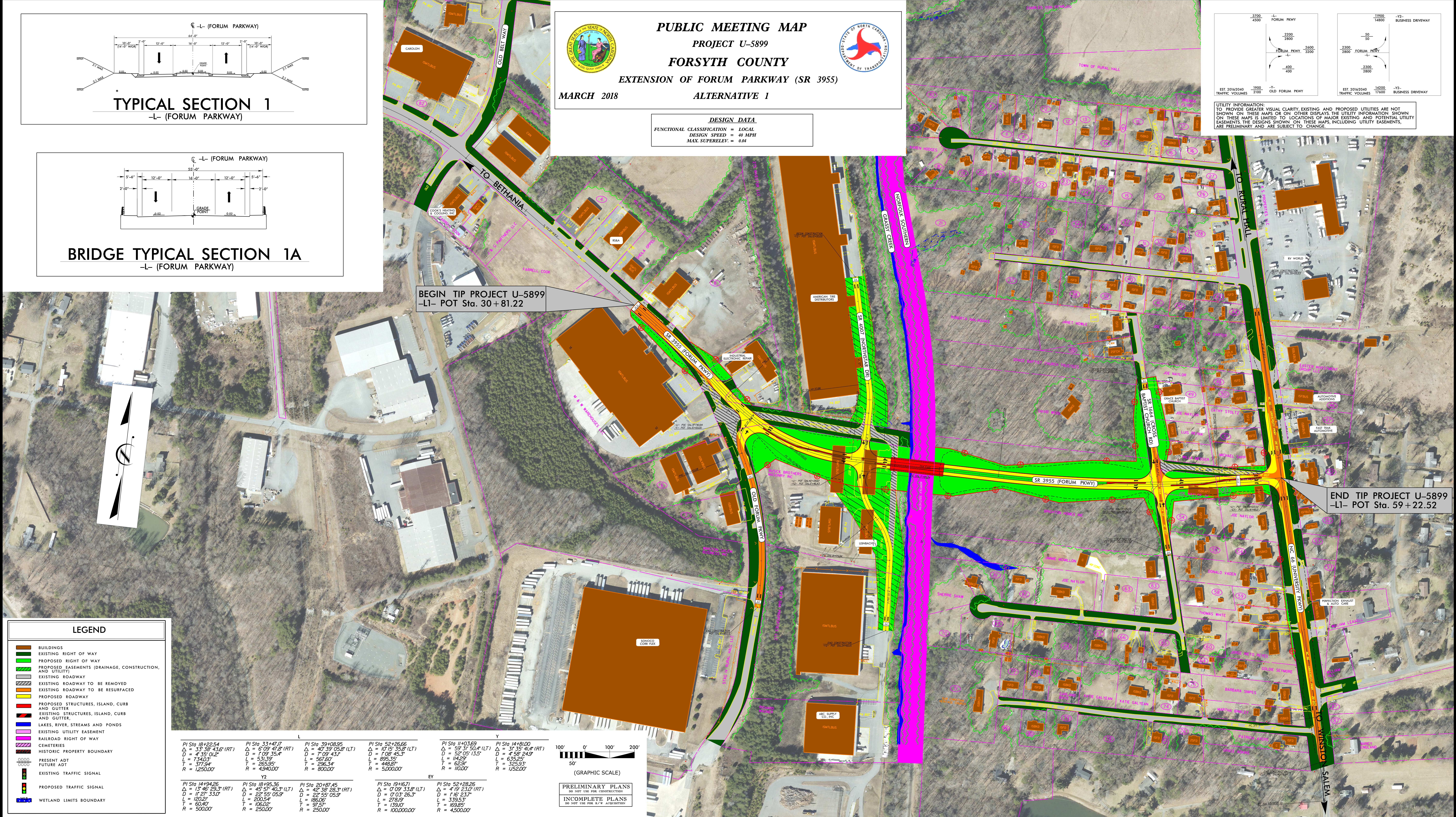

PUBLIC MEETING MAP
 PROJECT U-5899
FORSYTH COUNTY
EXTENSION OF FORUM PARKWAY (SR 3955)
 MARCH 2018
ALTERNATIVE 1


DESIGN DATA

FUNCTIONAL CLASSIFICATION = LOCAL
 DESIGN SPEED = 40 MPH
 MAX. SUPERELEV. = 0.04



UTILITY INFORMATION:
 TO PROVIDE GREATER VISUAL CLARITY EXISTING AND PROPOSED UTILITIES ARE NOT SHOWN ON THESE MAPS OR ON OTHER DISPLAYS. THE UTILITY INFORMATION SHOWN ON THESE MAPS IS LIMITED TO LOCATIONS OF MAJOR EXISTING AND POTENTIAL UTILITY EASEMENTS. THE DESIGNS SHOWN ON THESE MAPS, INCLUDING UTILITY EASEMENTS, ARE PRELIMINARY AND ARE SUBJECT TO CHANGE.

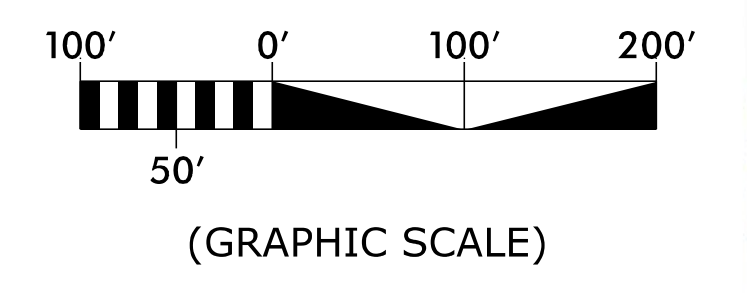


BEGIN TIP PROJECT U-5899
-L1- POT Sta. 30 + 81.22

END TIP PROJECT U-5899
-L1- POT Sta. 59 + 22.52

- LEGEND**
- BUILDINGS
 - EXISTING RIGHT OF WAY
 - PROPOSED RIGHT OF WAY
 - PROPOSED EASEMENTS (DRAINAGE, CONSTRUCTION, AND UTILITY)
 - EXISTING ROADWAY
 - EXISTING ROADWAY TO BE REMOVED
 - EXISTING ROADWAY TO BE RESURFACED
 - PROPOSED ROADWAY
 - PROPOSED STRUCTURES, ISLAND, CURB AND GUTTER
 - EXISTING STRUCTURES, ISLAND, CURB AND GUTTER
 - LAKES, RIVER, STREAMS AND PONDS
 - EXISTING UTILITY EASEMENT
 - RAILROAD RIGHT OF WAY
 - CEMETERIES
 - HISTORIC PROPERTY BOUNDARY
 - PRESENT ADT
 - FUTURE ADT
 - EXISTING TRAFFIC SIGNAL
 - PROPOSED TRAFFIC SIGNAL
 - WETLAND LIMITS BOUNDARY

L		Y		EY	
PI Sta 18+22.54 Δ = 33° 38' 43.6" (RT) D = 4° 35' 01.2" L = 7340.3' T = 371.24' R = 1250.00'	PI Sta 33+47.17 Δ = 6° 09' 41.8" (RT) D = 7° 09' 43.1" L = 531.39' T = 265.95' R = 4940.00'	PI Sta 39+08.95 Δ = 40° 39' 05.8" (LT) D = 7° 09' 43.1" L = 561.60' T = 286.34' R = 800.00'	PI Sta 52+26.66 Δ = 59° 31' 50.4" (LT) D = 1° 08' 45.3" L = 895.35' T = 448.87' R = 5000.00'	PI Sta 11+03.69 Δ = 59° 31' 50.4" (LT) D = 52° 05' 13.5" L = 146.25' T = 62.91' R = 100.00'	PI Sta 14+81.00 Δ = 3° 35' 41.4" (RT) D = 4° 58' 24.9" L = 635.25' T = 325.93' R = 1152.00'
PI Sta 14+94.26 Δ = 13° 46' 29.3" (RT) D = 17° 27' 33.0" L = 120.21' T = 60.40' R = 5000.00'	PI Sta 18+95.36 Δ = 45° 57' 40.3" (LT) D = 22° 55' 05.9" L = 200.54' T = 106.02' R = 250.00'	PI Sta 20+87.45 Δ = 42° 38' 28.3" (RT) D = 22° 55' 05.9" L = 186.05' T = 97.57' R = 250.00'	PI Sta 19+16.71 Δ = 0° 09' 33.8" (LT) D = 0° 03' 26.3" L = 278.17' T = 139.01' R = 100.0000.00'	PI Sta 52+28.26 Δ = 4° 19' 23.0" (RT) D = 1° 16' 23.7" L = 339.53' T = 169.85' R = 4500.00'	



PRELIMINARY PLANS
 DO NOT USE FOR CONSTRUCTION
 INCOMPLETE PLANS
 DO NOT USE FOR R/W ACQUISITION