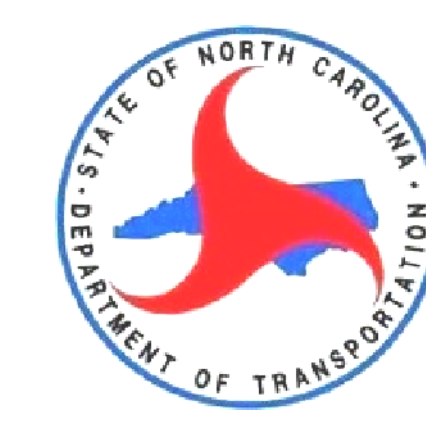
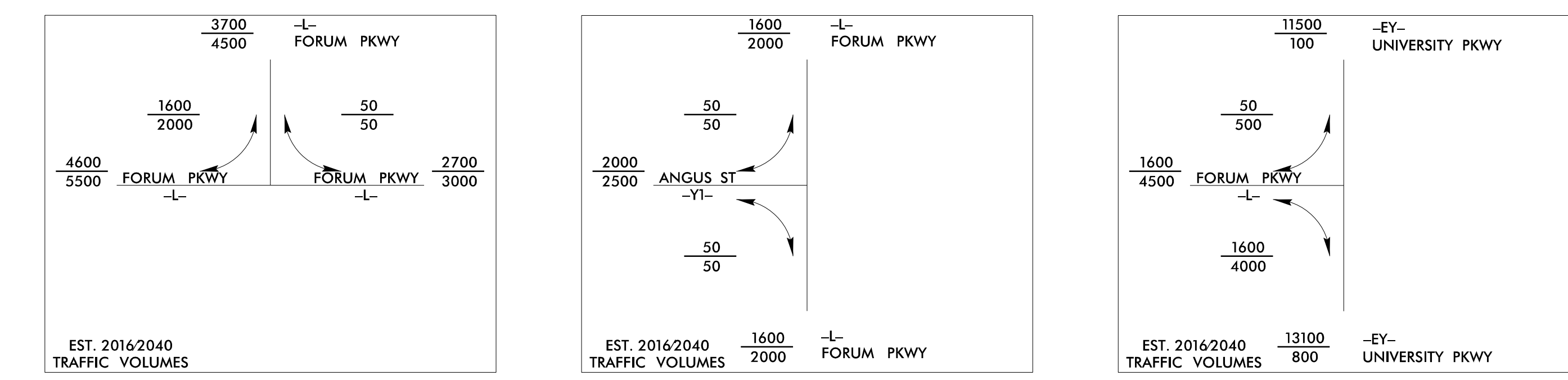


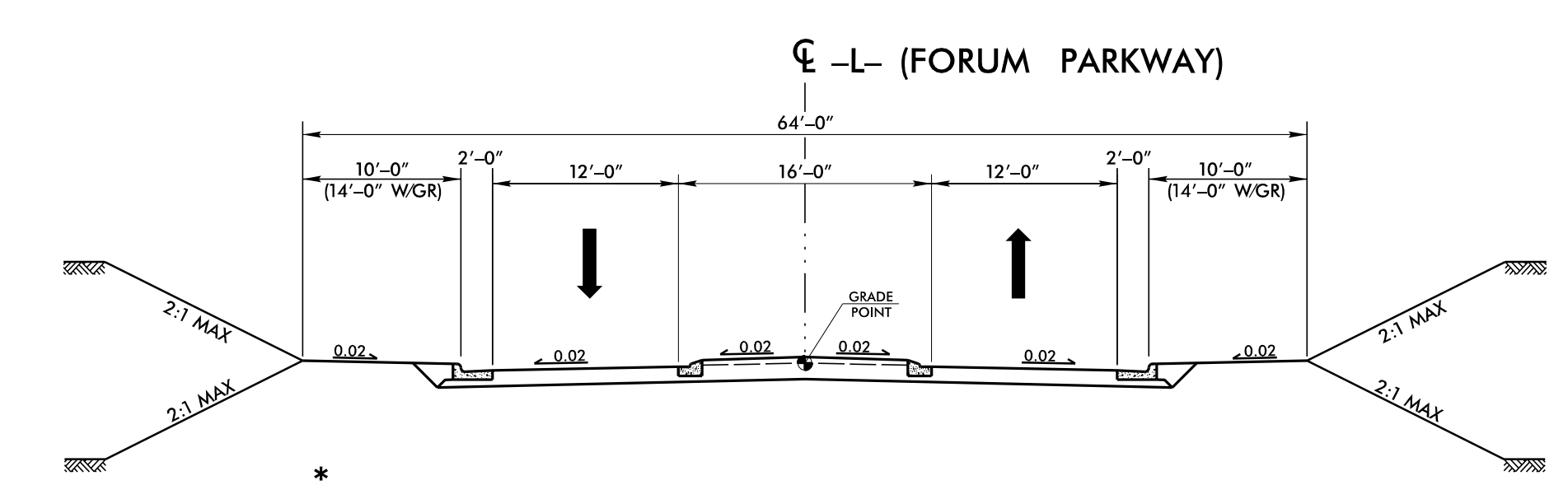
PUBLIC MEETING MAP
PROJECT U-5899
FORSYTH COUNTY
EXTENSION OF FORUM PARKWAY (SR 3955)
MARCH 2018
ALTERNATIVE 2



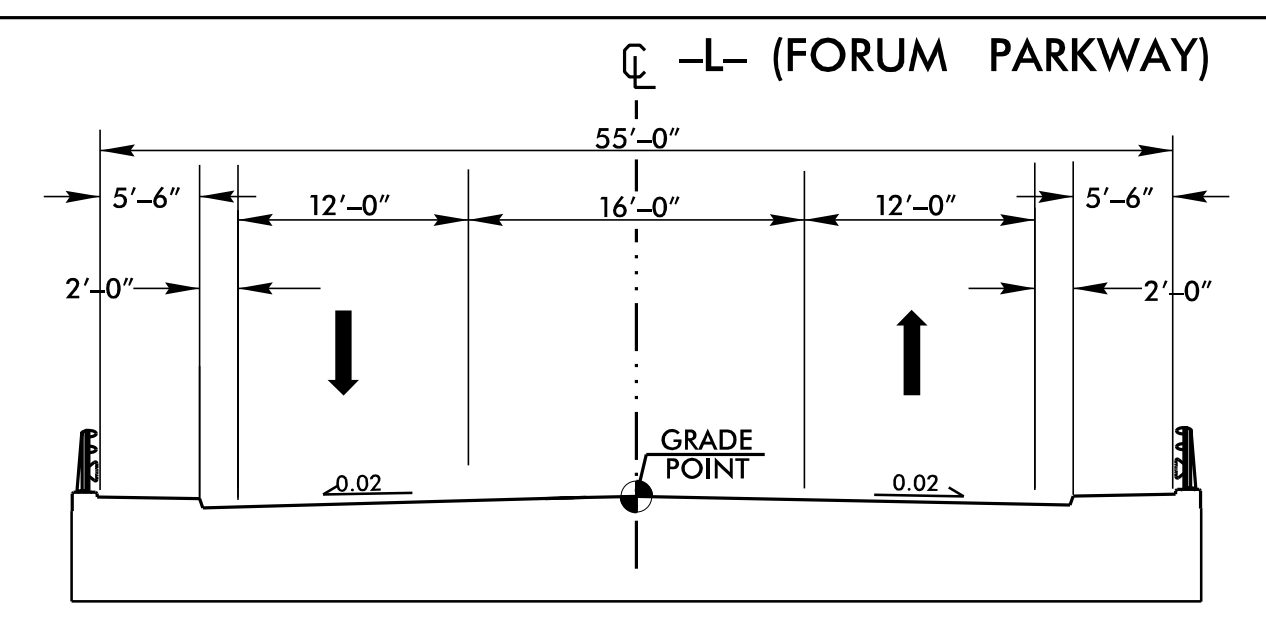
DESIGN DATA
 FUNCTIONAL CLASSIFICATION = LOCAL
 DESIGN SPEED = 40 MPH
 MAX. SUPERELEV. = 0.04



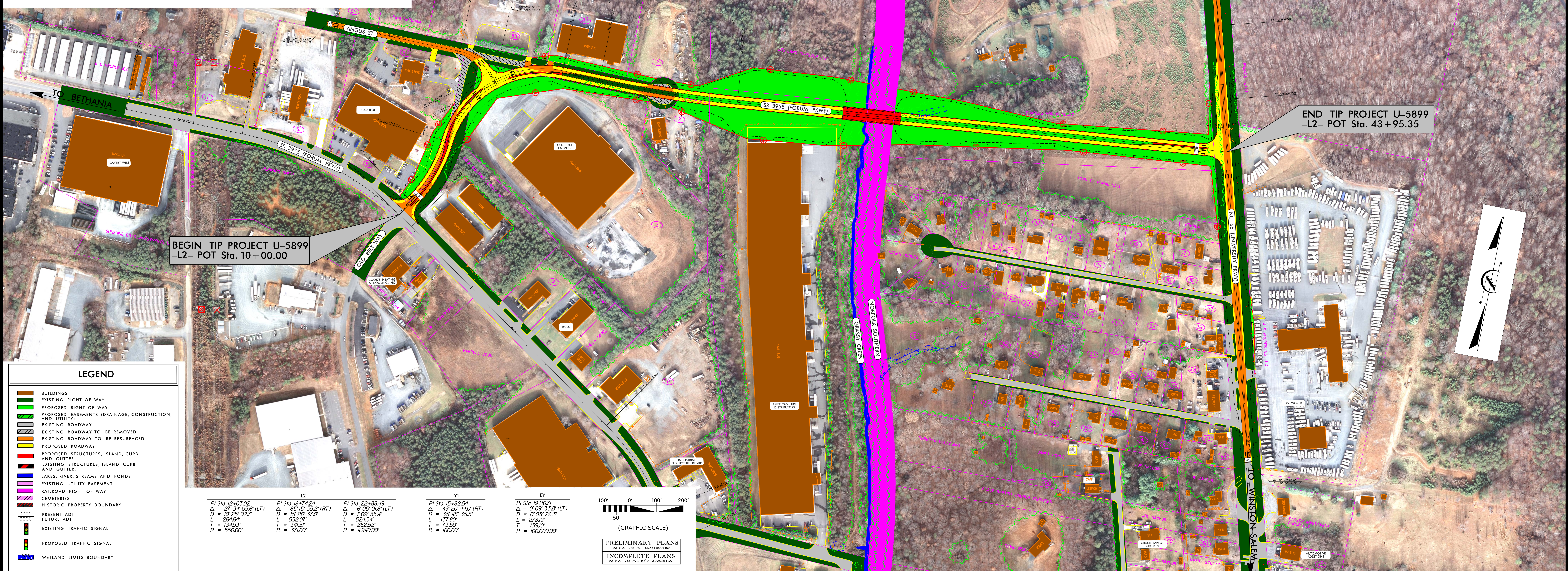
UTILITY INFORMATION:
 TO PROVIDE GREATER VISUAL CLARITY, EXISTING AND PROPOSED UTILITIES ARE NOT SHOWN ON THESE MAPS OR ON OTHER DISPLAYS. THE UTILITY INFORMATION SHOWN ON THESE MAPS IS LIMITED TO LOCATIONS OF MAJOR EXISTING AND POTENTIAL UTILITY EASEMENTS. THE DESIGNS SHOWN ON THESE MAPS, INCLUDING UTILITY EASEMENTS, ARE PRELIMINARY AND ARE SUBJECT TO CHANGE.



TYPICAL SECTION 1
 -L- (FORUM PARKWAY)



BRIDGE TYPICAL SECTION 1A
 -L- (FORUM PARKWAY)

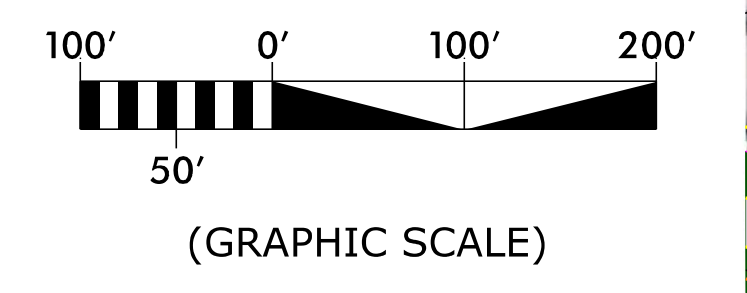


BEGIN TIP PROJECT U-5899
 -L2- POT Sta. 10+00.00

END TIP PROJECT U-5899
 -L2- POT Sta. 43+95.35

- LEGEND**
- BUILDINGS
 - EXISTING RIGHT OF WAY
 - PROPOSED RIGHT OF WAY
 - PROPOSED EASEMENTS (DRAINAGE, CONSTRUCTION, AND UTILITY)
 - EXISTING ROADWAY
 - EXISTING ROADWAY TO BE REMOVED
 - EXISTING ROADWAY TO BE RESURFACED
 - PROPOSED ROADWAY
 - PROPOSED STRUCTURES, ISLAND, CURB AND GUTTER
 - EXISTING STRUCTURES, ISLAND, CURB AND GUTTER
 - LAKES, RIVER, STREAMS AND PONDS
 - EXISTING UTILITY EASEMENT
 - RAILROAD RIGHT OF WAY
 - CEMETERIES
 - HISTORIC PROPERTY BOUNDARY
 - PRESENT ADT
 - FUTURE ADT
 - EXISTING TRAFFIC SIGNAL
 - PROPOSED TRAFFIC SIGNAL
 - WETLAND LIMITS BOUNDARY

L2	Y1	EY
PI Sta 12+03.02 Δ = 27° 34' 05.6" (LT) D = 10' 25' 02.7" L = 284.64' T = 134.93' R = 550.00'	PI Sta 16+74.24 Δ = 85° 15' 35.2" (RT) D = 15' 26' 37.0" L = 532.07' T = 341.50' R = 371.00'	PI Sta 22+88.49 Δ = 6° 05' 01.8" (LT) D = 1' 09' 35.4" L = 524.54' T = 262.52' R = 4,940.00'
	PI Sta 15+82.54 Δ = 85° 20' 44.0" (RT) D = 35' 48' 35.5" L = 137.80' T = 73.50' R = 160.00'	PI Sta 19+16.71 Δ = 0° 09' 33.8" (LT) D = 0' 03' 26.3" L = 278.29' T = 139.00' R = 100,000.00'



PRELIMINARY PLANS
 DO NOT USE FOR CONSTRUCTION
 INCOMPLETE PLANS
 DO NOT USE FOR R/W ACQUISITION

