

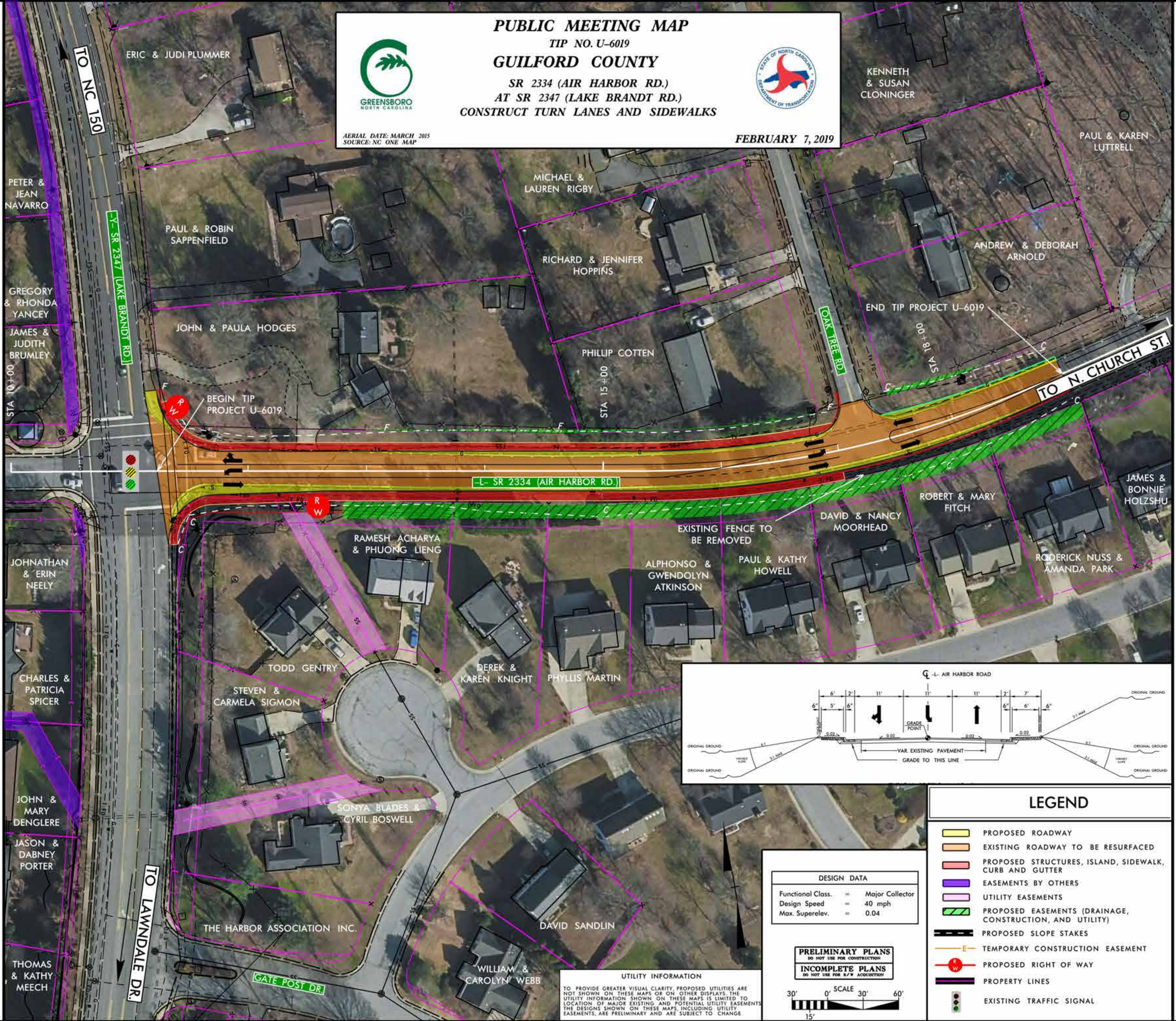
PUBLIC MEETING MAP
 TIP NO. U-6019
GUILFORD COUNTY
 SR 2334 (AIR HARBOR RD.)
 AT SR 2347 (LAKE BRANDT RD.)
 CONSTRUCT TURN LANES AND SIDEWALKS



AERIAL DATE: MARCH 2015
 SOURCE: NC ONE MAP

FEBRUARY 7, 2019

RS&H



PUBLIC MEETING MAP
 TIP NO. U-6019
GUILFORD COUNTY
 SR 2334 (AIR HARBOR RD.)
 AT SR 2347 (LAKE BRANDT RD.)
 CONSTRUCT TURN LANES AND SIDEWALKS



FEBRUARY 7, 2019



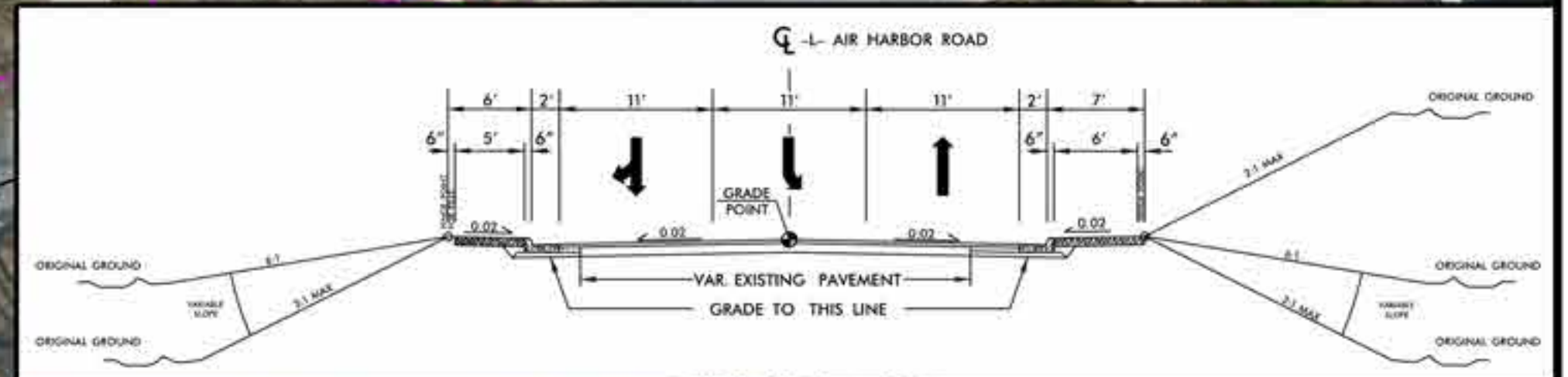
AERIAL DATE: MARCH 2015
 SOURCE: NC ONE MAP

RS&H

PUBLIC MEETING MAP
 TIP NO. U-6019
GUILFORD COUNTY
 SR 2334 (AIR HARBOR RD.)
 AT SR 2347 (LAKE BRANDT RD.)
 CONSTRUCT TURN LANES AND SIDEWALKS



FEBRUARY 7, 2019



DESIGN DATA	
Functional Class.	= Major Collector
Design Speed	= 40 mph
Max. Superelev.	= 0.04

PRELIMINARY PLANS
 DO NOT USE FOR CONSTRUCTION
INCOMPLETE PLANS
 DO NOT USE FOR R.F.W. ACQUISITION



UTILITY INFORMATION
 TO PROVIDE GREATER VISUAL CLARITY, PROPOSED UTILITIES ARE NOT SHOWN ON THESE MAPS OR ON OTHER DISPLAYS. THE UTILITY INFORMATION SHOWN ON THESE MAPS IS LIMITED TO LOCATION OF MAJOR EXISTING AND POTENTIAL UTILITY EASEMENTS. THE DESIGNS SHOWN ON THESE MAPS, INCLUDING UTILITY EASEMENTS, ARE PRELIMINARY AND ARE SUBJECT TO CHANGE.

LEGEND	
	PROPOSED ROADWAY
	EXISTING ROADWAY TO BE RESURFACED
	PROPOSED STRUCTURES, ISLAND, SIDEWALK, CURB AND GUTTER
	EASEMENTS BY OTHERS
	UTILITY EASEMENTS
	PROPOSED EASEMENTS (DRAINAGE, CONSTRUCTION, AND UTILITY)
	PROPOSED SLOPE STAKES
	TEMPORARY CONSTRUCTION EASEMENT
	PROPOSED RIGHT OF WAY
	PROPERTY LINES
	EXISTING TRAFFIC SIGNAL