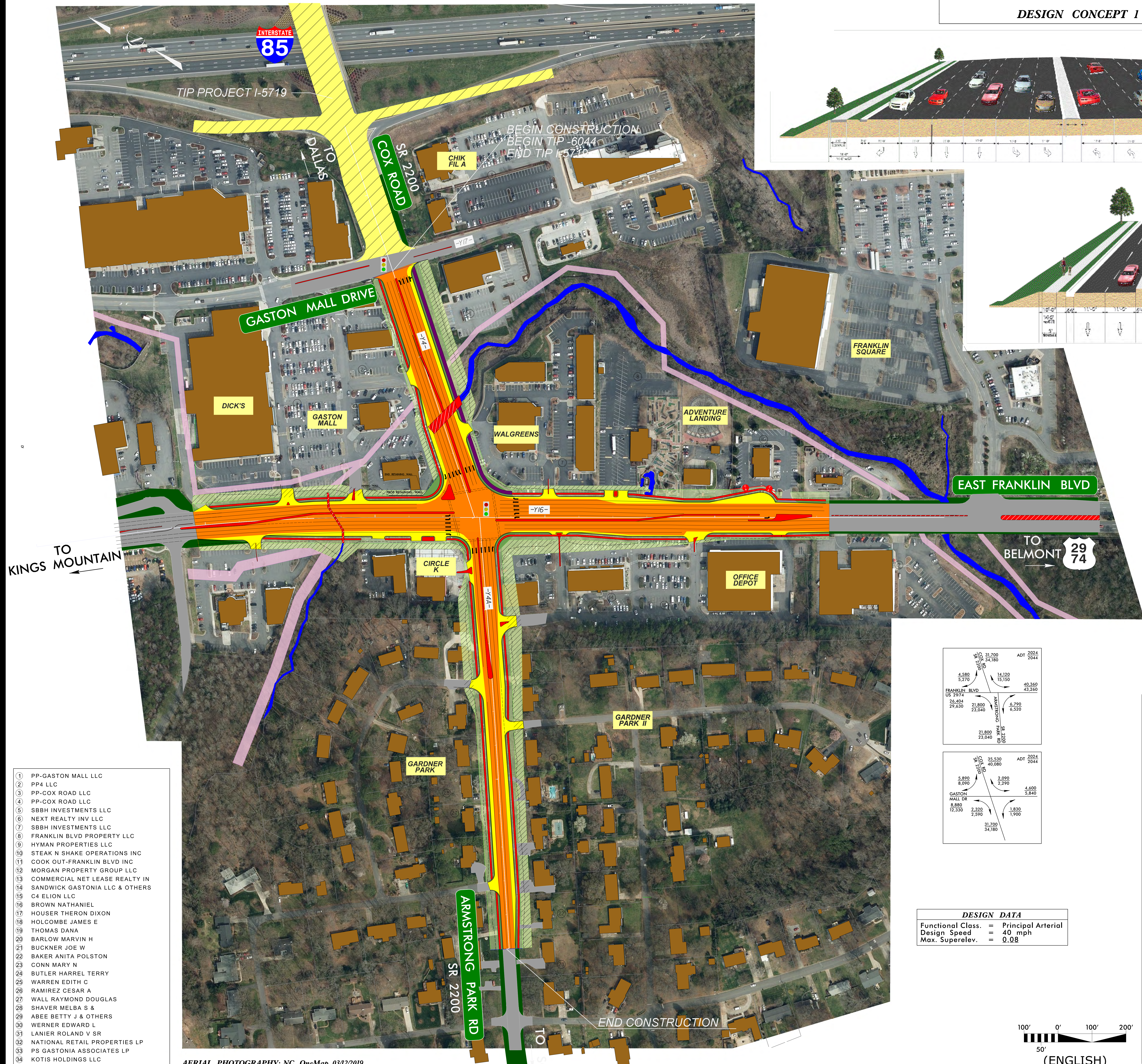
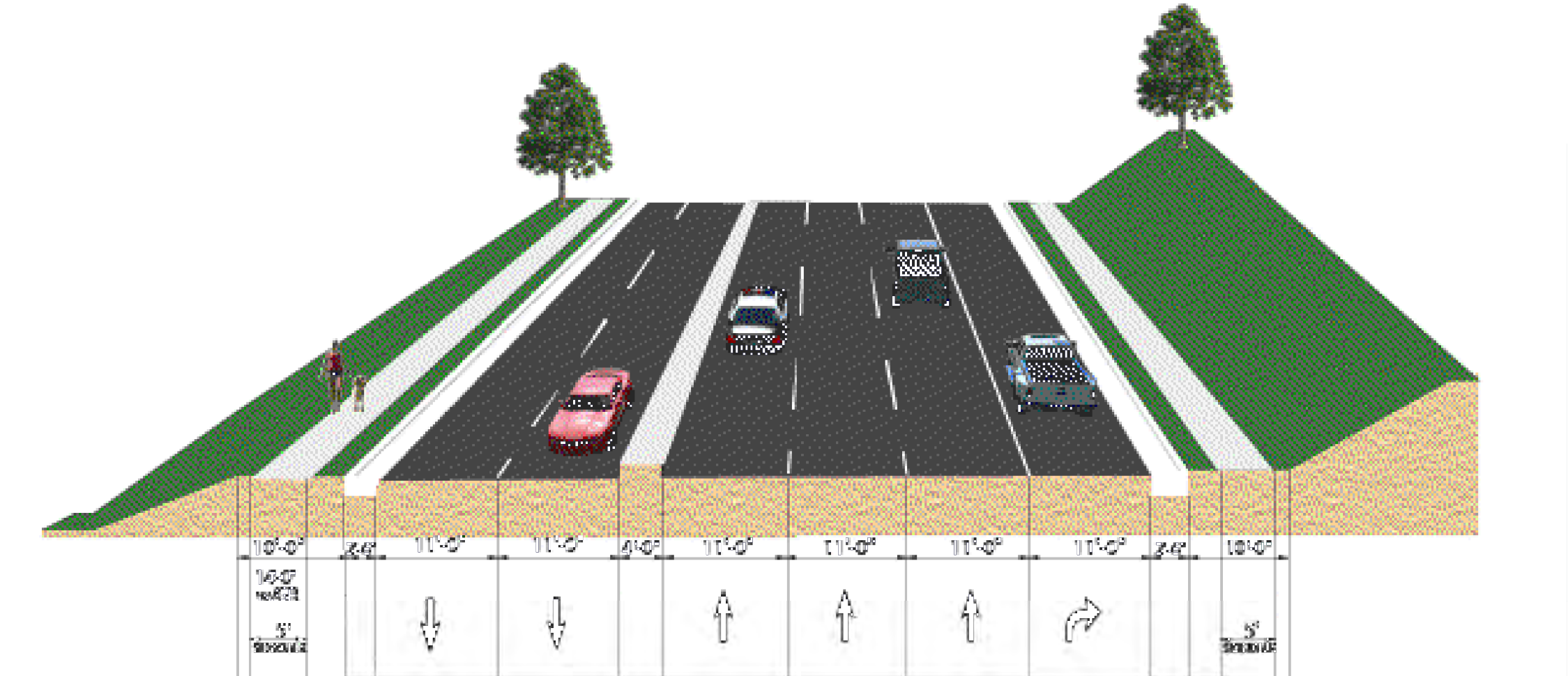
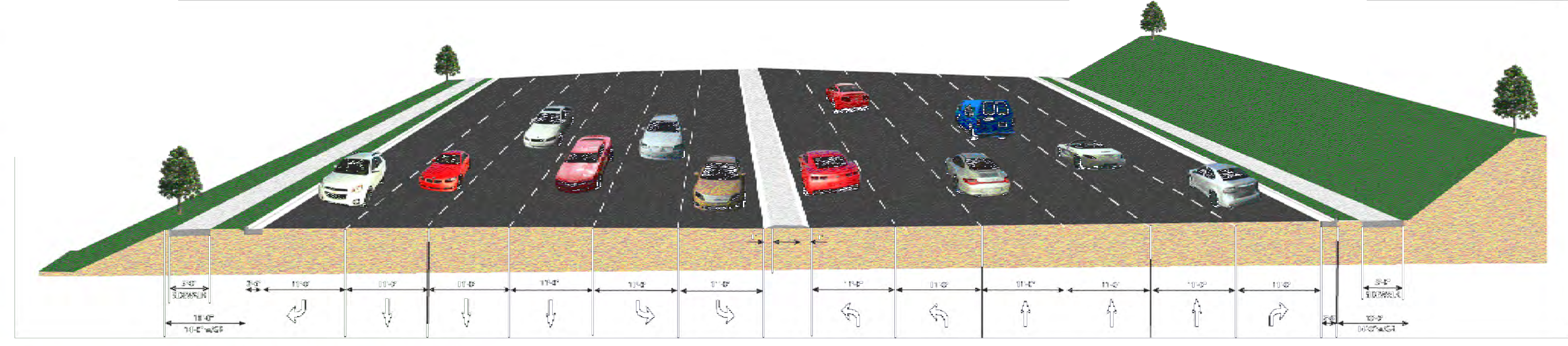
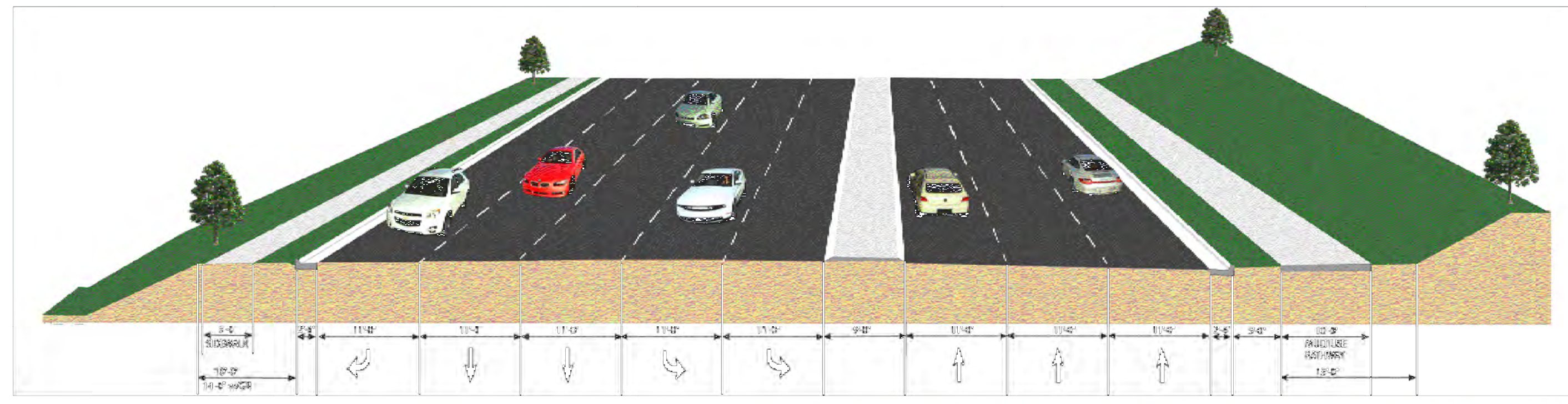


DESIGN PUBLIC MEETING MAP
PROJECT 46986.1.1 (U-6044)
F. A. PROJECT 4698611
GASTON COUNTY
SR 2200 (COX ROAD)
FROM I-85
TO US 2974 (EAST FRANKLIN BOULEVARD)
DESIGN CONCEPT 1 FEBRUARY 15, 2024



DESIGN PUBLIC MEETING MAP
PROJECT 46986.1.1 (U-6044)
F. A. PROJECT 4698611
GASTON COUNTY
SR 2200 (COX ROAD)
FROM I-85
TO US 2974 (EAST FRANKLIN BOULEVARD)
DESIGN CONCEPT 1 FEBRUARY 15, 2024

DESIGN PUBLIC MEETING MAP
PROJECT 46986.1.1 (U-6044)
F. A. PROJECT 4698611
GASTON COUNTY
SR 2200 (COX ROAD)
FROM I-85
TO US 2974 (EAST FRANKLIN BOULEVARD)
DESIGN CONCEPT 1 FEBRUARY 15, 2024

DRIVEWAY NOTE
 DRIVEWAY LOCATION AND SIZE ARE PRELIMINARY AND ARE SUBJECT TO CHANGE BASED ON FINAL DESIGNS.

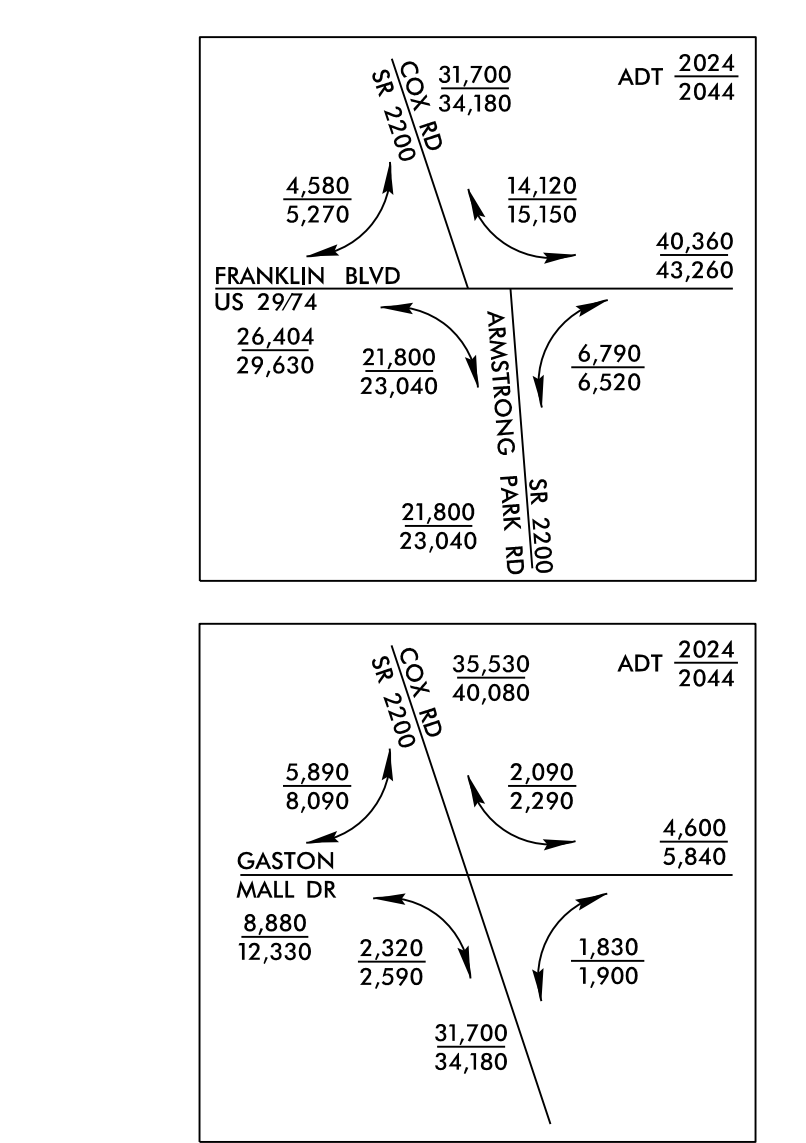
UTILITY INFORMATION
 TO PROVIDE GREATER VISUAL CLARITY, EXISTING AND PROPOSED UTILITIES ARE NOT SHOWN ON THESE MAPS OR ON OTHER DISPLAYS. THE UTILITY INFORMATION SHOWN ON THESE MAPS IS LIMITED TO LOCATIONS OF MAJOR EXISTING AND POTENTIAL UTILITY EASEMENTS. THE DESIGNS SHOWN ON THESE MAPS, INCLUDING UTILITY EASEMENTS, ARE PRELIMINARY AND ARE UTILITY INFORMATION SUBJECT TO CHANGE.

PRELIMINARY PLANS
 DO NOT USE FOR CONSTRUCTION

INCOMPLETE PLANS
 DO NOT USE FOR R/W ACQUISITION

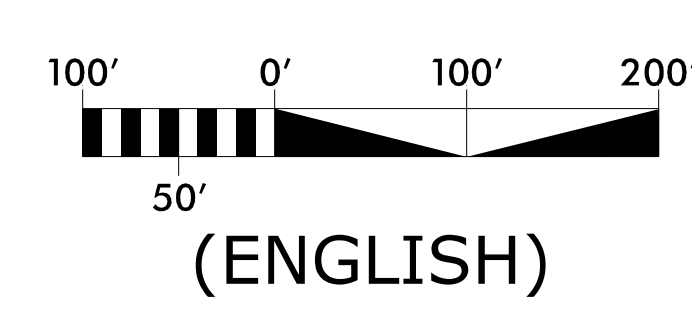
LEGEND

- BUILDINGS
- EXISTING RIGHT OF WAY
- PROPOSED RIGHT OF WAY
- ALL EASEMENTS
- EXISTING ROADWAY
- EXISTING ROADWAY TO BE REMOVED
- EXISTING ROADWAY TO BE RESURFACED
- PROPOSED ROADWAY
- FUTURE ROADWAY (I-5719)
- PROPOSED STRUCTURES, ISLAND, CURB AND GUTTER
- EXISTING STRUCTURES, ISLAND, CURB AND GUTTER TO BE RETAINED
- EXISTING STRUCTURES, ISLAND, CURB AND GUTTER TO BE REMOVED
- FUTURE STRUCTURES, ISLAND, CURB AND GUTTER
- LAKES, RIVER, STREAMS AND PONDS
- PROPOSED MULTI USE PATH/GREENWAY
- UTILITY EASEMENT
- PROPOSED CONTROL OF ACCESS
- EXISTING CONTROL OF ACCESS
- PRESENT ADT
- FUTURE ADT
- PROPERTY LINES
- EXISTING TRAFFIC SIGNAL
- PROPOSED TRAFFIC SIGNAL
- WETLAND LIMITS BOUNDARY
- STREAM BUFFER ZONE



DESIGN DATA

Functional Class.	=	Principal Arterial
Design Speed	=	40 mph
Max. Superlev.	=	0.08



- 1 PP-GASTON MALL LLC
- 2 PP4 LLC
- 3 PP-COX ROAD LLC
- 4 PP-COX ROAD LLC
- 5 SBBH INVESTMENTS LLC
- 6 NEXT REALTY INV LLC
- 7 SBBH INVESTMENTS LLC
- 8 FRANKLIN BLVD PROPERTY LLC
- 9 HYMAN PROPERTIES LLC
- 10 STEAK N SHAKE OPERATIONS INC
- 11 COOK OUT-FRANKLIN BLVD INC
- 12 MORGAN PROPERTY GROUP LLC
- 13 COMMERCIAL NET LEASE REALTY IN
- 14 SANDWICK GASTONIA LLC & OTHERS
- 15 C4 ELION LLC
- 16 BROWN NATHANIEL
- 17 HOUSER THERON DIXON
- 18 HOLCOMBE JAMES E
- 19 THOMAS DANA
- 20 BARLOW MARVIN H
- 21 BUCKNER JOE W
- 22 BAKER ANITA POLSTON
- 23 CONN MARY N
- 24 BUTLER HARREL TERRY
- 25 WARREN EDITH C
- 26 RAMIREZ CESAR A
- 27 WALL RAYMOND DOUGLAS
- 28 SHAVER MELBA S &
- 29 ABBE BETTY J & OTHERS
- 30 WERNER EDWARD L
- 31 LANIER ROLAND V SR
- 32 NATIONAL RETAIL PROPERTIES LP
- 33 PS GASTONIA ASSOCIATES LP
- 34 KOTIS HOLDINGS LLC