

LEGEND

- EXISTING RIGHT OF WAY
- PROPOSED RIGHT OF WAY
- EXISTING ROADWAY TO BE RESURFACED
- PROPOSED ROADWAY TO BE RESURFACED
- PROPOSED ROADWAY TO BE RELOCATED
- EXISTING UTILITY REMNANTS (DRAINAGE CONSTRUCTION, AND UTILITY REMNANTS)
- PROPOSED PARTIAL CONTROL OF ACCESS
- EXISTING PARTIAL CONTROL OF ACCESS
- CITY OR TOWNSHIP LIMITS
- PROPERTY LINES
- WETLAND LIMITS (ROWLAND WETLANDS, CANNON WETLANDS, AND OCEANOGRAPHY VICTORY TRAIL)
- OYSTER BEDS

DESIGN DATA

ITEM	VALUE
DESIGN SPEED	60 MPH
DESIGN LOAD	H-20
DESIGN YEAR	2020
DESIGN DATE	03-09-08

PRELIMINARY PLANS

FOR THE PROPOSED RUTHERFORDTON BYPASS FROM US 74 BYPASS TO SR 1366 (ROPER LOOP ROAD)

IN ACCORDANCE WITH SECTION 92-208 OF THE NORTH CAROLINA STATUTES

DATE: 03-09-08



DESIGN PUBLIC HEARING MAP

PROJECT 34400.1.2 (R-2233B)

STATE PROJECT 8.1891001

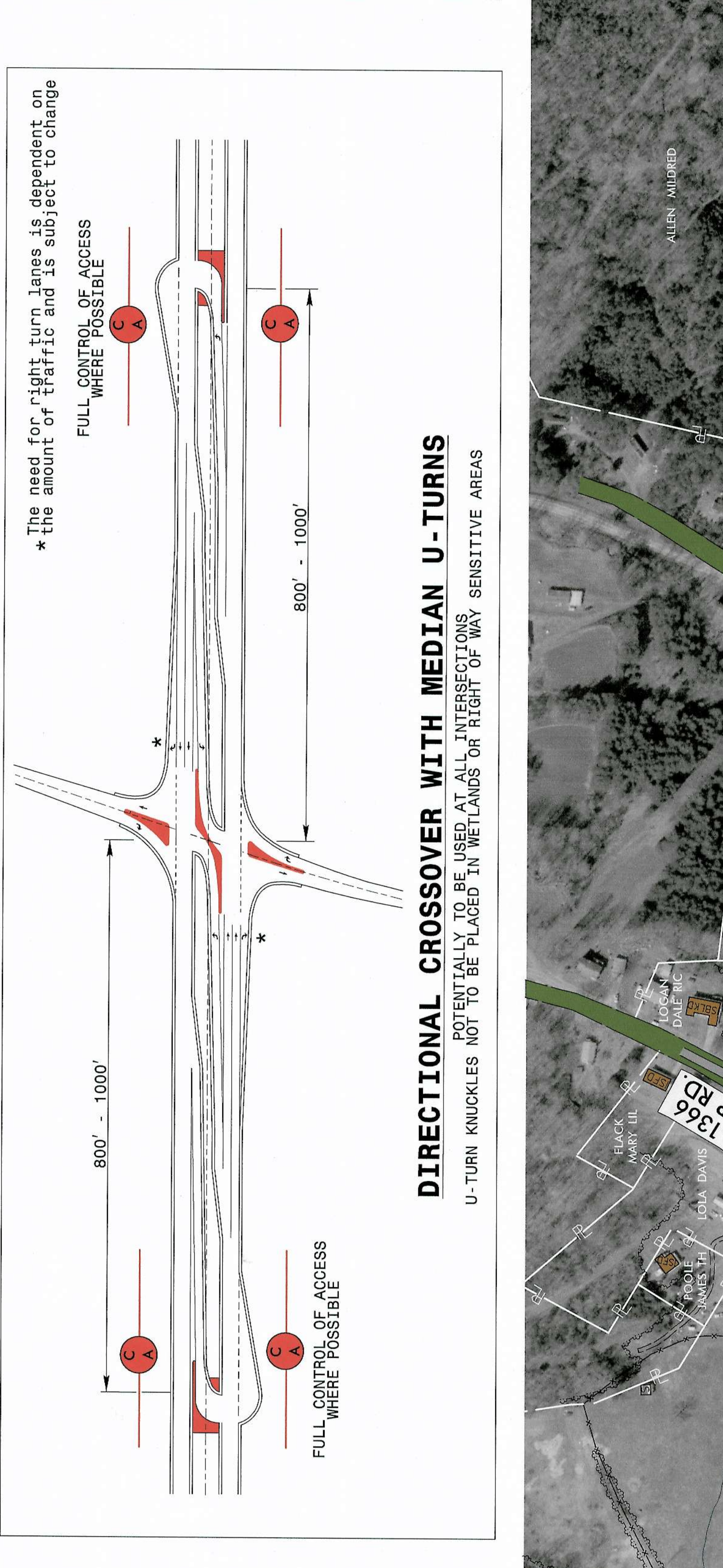
RUTHERFORD COUNTY

US 221

PROPOSED RUTHERFORDTON BYPASS

FROM US 74 BYPASS TO SR 1366 (ROPER LOOP ROAD)

ROLL 3 OF 3



NOTE:

Partial Control of Access is defined as one access point per parcel. For properties with large road frontage (for example, 2000 feet or more), an additional access point may be considered. For properties that have alternate access (such as via a side road) access to US 221 may be eliminated.

NOTE:

Full Control of Access is defined as a connection to a facility provided only via ramps at interchanges. All cross-streets are grade-separated. No private driveway connections are allowed.

DESIGN DATA

ITEM	VALUE
DESIGN SPEED	60 MPH
DESIGN LOAD	H-20
DESIGN YEAR	2020
DESIGN DATE	03-09-08

PRELIMINARY PLANS

FOR THE PROPOSED RUTHERFORDTON BYPASS FROM US 74 BYPASS TO SR 1366 (ROPER LOOP ROAD)

IN ACCORDANCE WITH SECTION 92-208 OF THE NORTH CAROLINA STATUTES

DATE: 03-09-08



DESIGN PUBLIC HEARING MAP

PROJECT 34400.1.2 (R-2233B)

STATE PROJECT 8.1891001

RUTHERFORD COUNTY

US 221

PROPOSED RUTHERFORDTON BYPASS

FROM US 74 BYPASS TO SR 1366 (ROPER LOOP ROAD)

ROLL 3 OF 3



NOTE:

Partial Control of Access is defined as one access point per parcel. For properties with large road frontage (for example, 2000 feet or more), an additional access point may be considered. For properties that have alternate access (such as via a side road) access to US 221 may be eliminated.

NOTE:

Full Control of Access is defined as a connection to a facility provided only via ramps at interchanges. All cross-streets are grade-separated. No private driveway connections are allowed.



DESIGN DATA

ITEM	VALUE
DESIGN SPEED	60 MPH
DESIGN LOAD	H-20
DESIGN YEAR	2020
DESIGN DATE	03-09-08

DESIGN PUBLIC HEARING MAP

PROJECT 34400.1.2 (R-2233B)

STATE PROJECT 8.1891001

RUTHERFORD COUNTY

US 221

PROPOSED RUTHERFORDTON BYPASS

FROM US 74 BYPASS TO SR 1366 (ROPER LOOP ROAD)

ROLL 3 OF 3



NOTE:

Partial Control of Access is defined as one access point per parcel. For properties with large road frontage (for example, 2000 feet or more), an additional access point may be considered. For properties that have alternate access (such as via a side road) access to US 221 may be eliminated.

NOTE:

Full Control of Access is defined as a connection to a facility provided only via ramps at interchanges. All cross-streets are grade-separated. No private driveway connections are allowed.



DESIGN DATA

ITEM	VALUE
DESIGN SPEED	60 MPH
DESIGN LOAD	H-20
DESIGN YEAR	2020
DESIGN DATE	03-09-08

DESIGN PUBLIC HEARING MAP

PROJECT 34400.1.2 (R-2233B)

STATE PROJECT 8.1891001

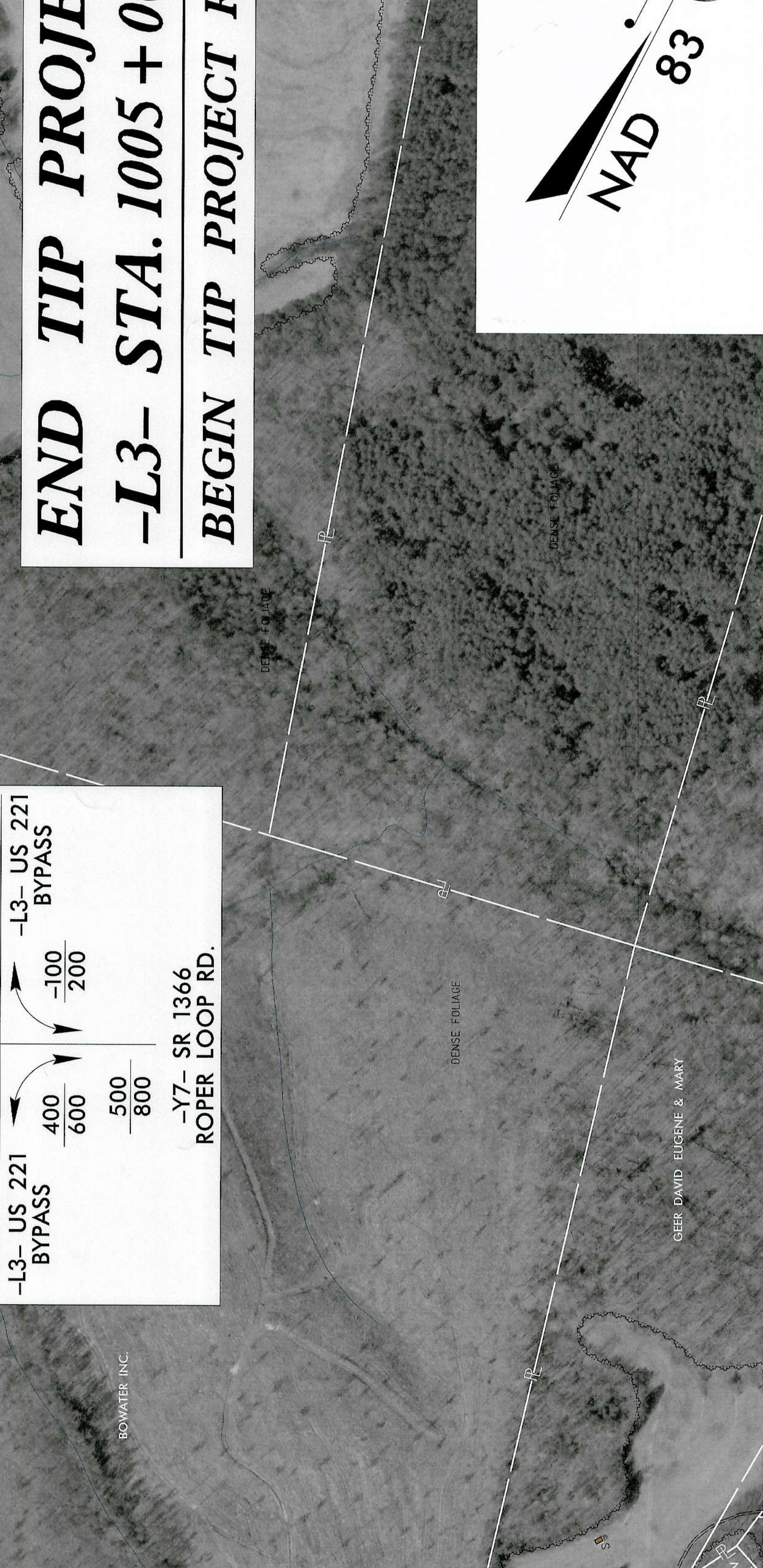
RUTHERFORD COUNTY

US 221

PROPOSED RUTHERFORDTON BYPASS

FROM US 74 BYPASS TO SR 1366 (ROPER LOOP ROAD)

ROLL 3 OF 3



NOTE:

Partial Control of Access is defined as one access point per parcel. For properties with large road frontage (for example, 2000 feet or more), an additional access point may be considered. For properties that have alternate access (such as via a side road) access to US 221 may be eliminated.

NOTE:

Full Control of Access is defined as a connection to a facility provided only via ramps at interchanges. All cross-streets are grade-separated. No private driveway connections are allowed.



DESIGN DATA

ITEM	VALUE
DESIGN SPEED	60 MPH
DESIGN LOAD	H-20
DESIGN YEAR	2020
DESIGN DATE	03-09-08

DESIGN PUBLIC HEARING MAP

PROJECT 34400.1.2 (R-2233B)

STATE PROJECT 8.1891001

RUTHERFORD COUNTY

US 221

PROPOSED RUTHERFORDTON BYPASS

FROM US 74 BYPASS TO SR 1366 (ROPER LOOP ROAD)

ROLL 3 OF 3



NOTE:

Partial Control of Access is defined as one access point per parcel. For properties with large road frontage (for example, 2000 feet or more), an additional access point may be considered. For properties that have alternate access (such as via a side road) access to US 221 may be eliminated.

NOTE:

Full Control of Access is defined as a connection to a facility provided only via ramps at interchanges. All cross-streets are grade-separated. No private driveway connections are allowed.



DESIGN DATA

ITEM	VALUE
DESIGN SPEED	60 MPH
DESIGN LOAD	H-20
DESIGN YEAR	2020
DESIGN DATE	03-09-08

DESIGN PUBLIC HEARING MAP

PROJECT 34400.1.2 (R-2233B)

STATE PROJECT 8.1891001

RUTHERFORD COUNTY

US 221

PROPOSED RUTHERFORDTON BYPASS

FROM US 74 BYPASS TO SR 1366 (ROPER LOOP ROAD)

ROLL 3 OF 3



NOTE:

Partial Control of Access is defined as one access point per parcel. For properties with large road frontage (for example, 2000 feet or more), an additional access point may be considered. For properties that have alternate access (such as via a side road) access to US 221 may be eliminated.

NOTE:

Full Control of Access is defined as a connection to a facility provided only via ramps at interchanges. All cross-streets are grade-separated. No private driveway connections are allowed.



DESIGN DATA

ITEM	VALUE
DESIGN SPEED	60 MPH
DESIGN LOAD	H-20
DESIGN YEAR	2020
DESIGN DATE	03-09-08

DESIGN PUBLIC HEARING MAP

PROJECT 34400.1.2 (R-2233B)

STATE PROJECT 8.1891001

RUTHERFORD COUNTY

US 221

PROPOSED RUTHERFORDTON BYPASS

FROM US 74 BYPASS TO SR 1366 (ROPER LOOP ROAD)

ROLL 3 OF 3



NOTE:

Partial Control of Access is defined as one access point per parcel. For properties with large road frontage (for example, 2000 feet or more), an additional access point may be considered. For properties that have alternate access (such as via a side road) access to US 221 may be eliminated.

NOTE:

Full Control of Access is defined as a connection to a facility provided only via ramps at interchanges. All cross-streets are grade-separated. No private driveway connections are allowed.



DESIGN DATA

ITEM	VALUE
DESIGN SPEED	60 MPH
DESIGN LOAD	H-20
DESIGN YEAR	2020
DESIGN DATE	03-09-08

DESIGN PUBLIC HEARING MAP

PROJECT 34400.1.2 (R-2233B)

STATE PROJECT 8.1891001

RUTHERFORD COUNTY

US 221

PROPOSED RUTHERFORDTON BYPASS

FROM US 74 BYPASS TO SR 1366 (ROPER LOOP ROAD)

ROLL 3 OF 3



NOTE:

Partial Control of Access is defined as one access point per parcel. For properties with large road frontage (for example, 2000 feet or more), an additional access point may be considered. For properties that have alternate access (such as via a side road) access to US 221 may be eliminated.

NOTE:

Full Control of Access is defined as a connection to a facility provided only via ramps at interchanges. All cross-streets are grade-separated. No private driveway connections are allowed.