

PROJECT REFERENCE NO.	SHEET NO.
R-2237C	4
R/W SHEET NO.	4
ROADWAY DESIGN ENGINEER	HYDRAULICS ENGINEER

NOTE: SEE SHEETS 21 & 22 FOR -L- PROFILE  
SEE SHEET 34 FOR -DRIVE8- PROFILE

E. KATHRYNE MILLER

-L-

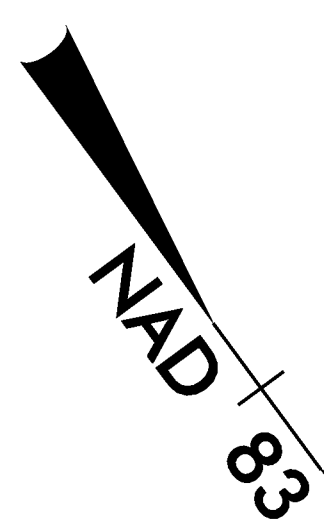
DB 213 PG 593  
PI Sta 362+97.25  
Δ = 39° 57' 38.7" (LT)  
D = 11' 27' 33.0"  
L = 348.72'  
T = 181.79'  
R = 500.00'

-DRIVE5-  
PI Sta 11+16.30  
Δ = 40° 05' 40.2" (RT)  
D = 114' 35' 29.6"  
L = 34.99'  
T = 18.25'  
R = 50.00'

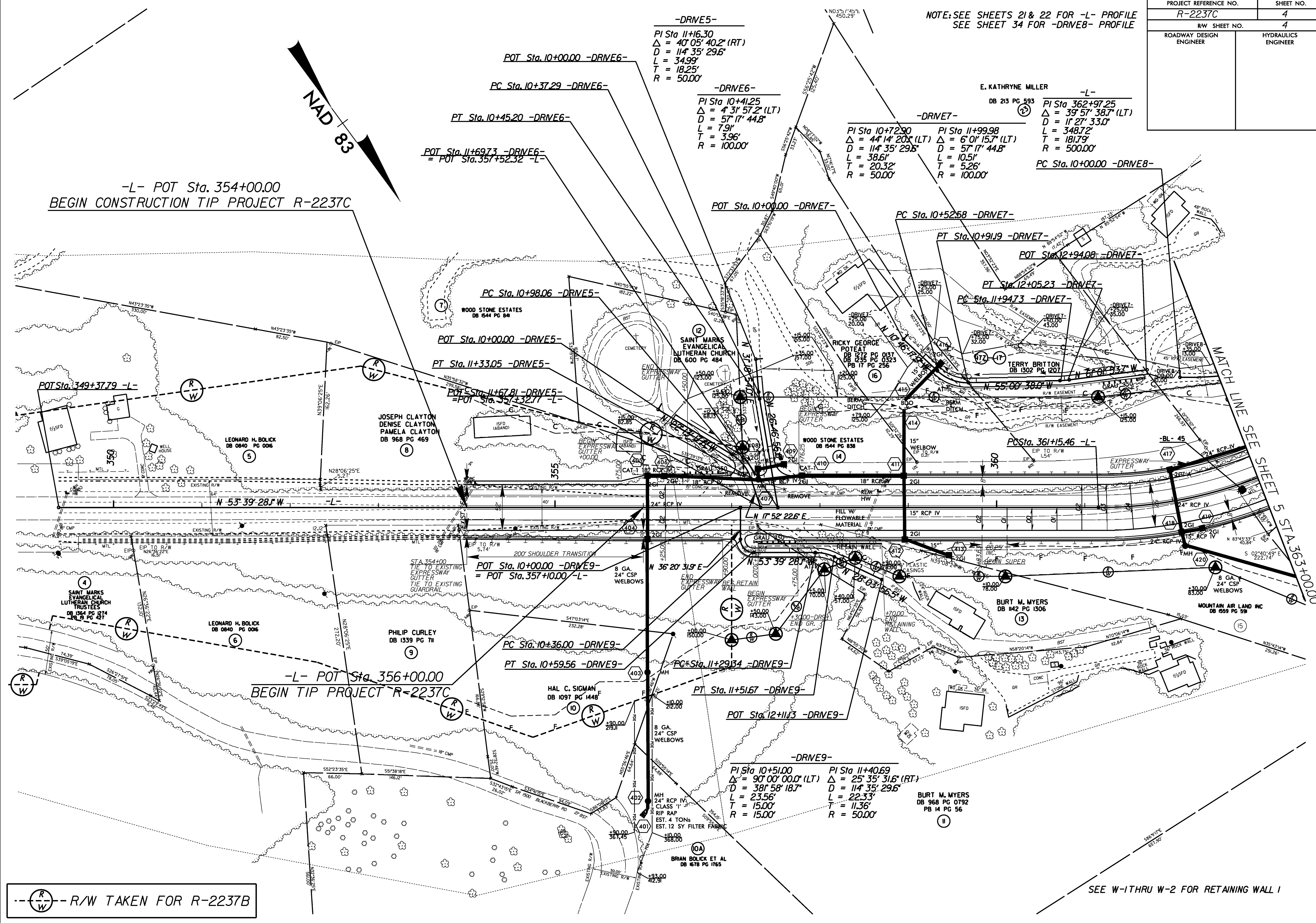
-DRIVE6-  
PI Sta 10+41.25  
Δ = 4° 31' 57.2" (LT)  
D = 57' 17' 44.8"  
L = 7.91'  
T = 3.96'  
R = 100.00'

-DRIVE7-  
PI Sta 10+72.90  
Δ = 44° 14' 20.1" (LT)  
D = 114' 35' 29.6"  
L = 38.61'  
T = 20.32'  
R = 50.00'

PI Sta 11+99.98  
Δ = 6° 01' 15.7" (LT)  
D = 57' 17' 44.8"  
L = 10.51'  
T = 5.26'  
R = 100.00'



-L- POT Sta. 354+00.00  
BEGIN CONSTRUCTION TIP PROJECT R-2237C



R/W TAKEN FOR R-2237B

SEE W-1 THRU W-2 FOR RETAINING WALL 1

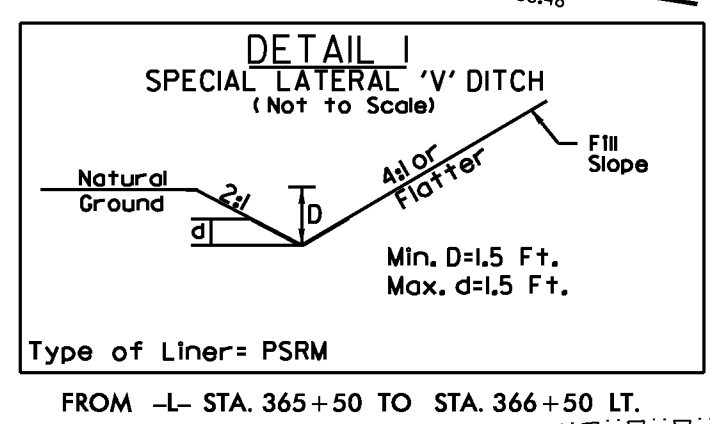
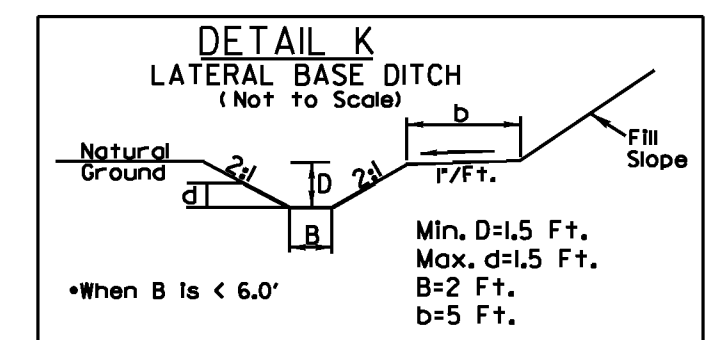
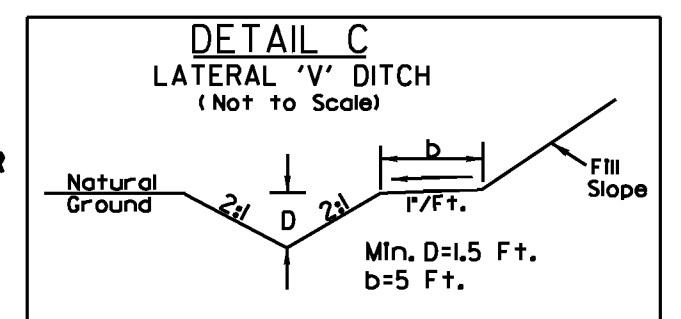
REVISIONS

15-AUG-2011 09:17  
S:\PROJECTS\2237C\2237C-r.dwg -psh4.dgn

PROJECT REFERENCE NO.	SHEET NO.
R-2237C	5
R/W SHEET NO.	5
ROADWAY DESIGN ENGINEER	HYDRAULICS ENGINEER

NOTE: SEE SHEETS 21 & 22 FOR -L- PROFILE  
SEE SHEET 34 FOR -DRIVE8- PROFILE

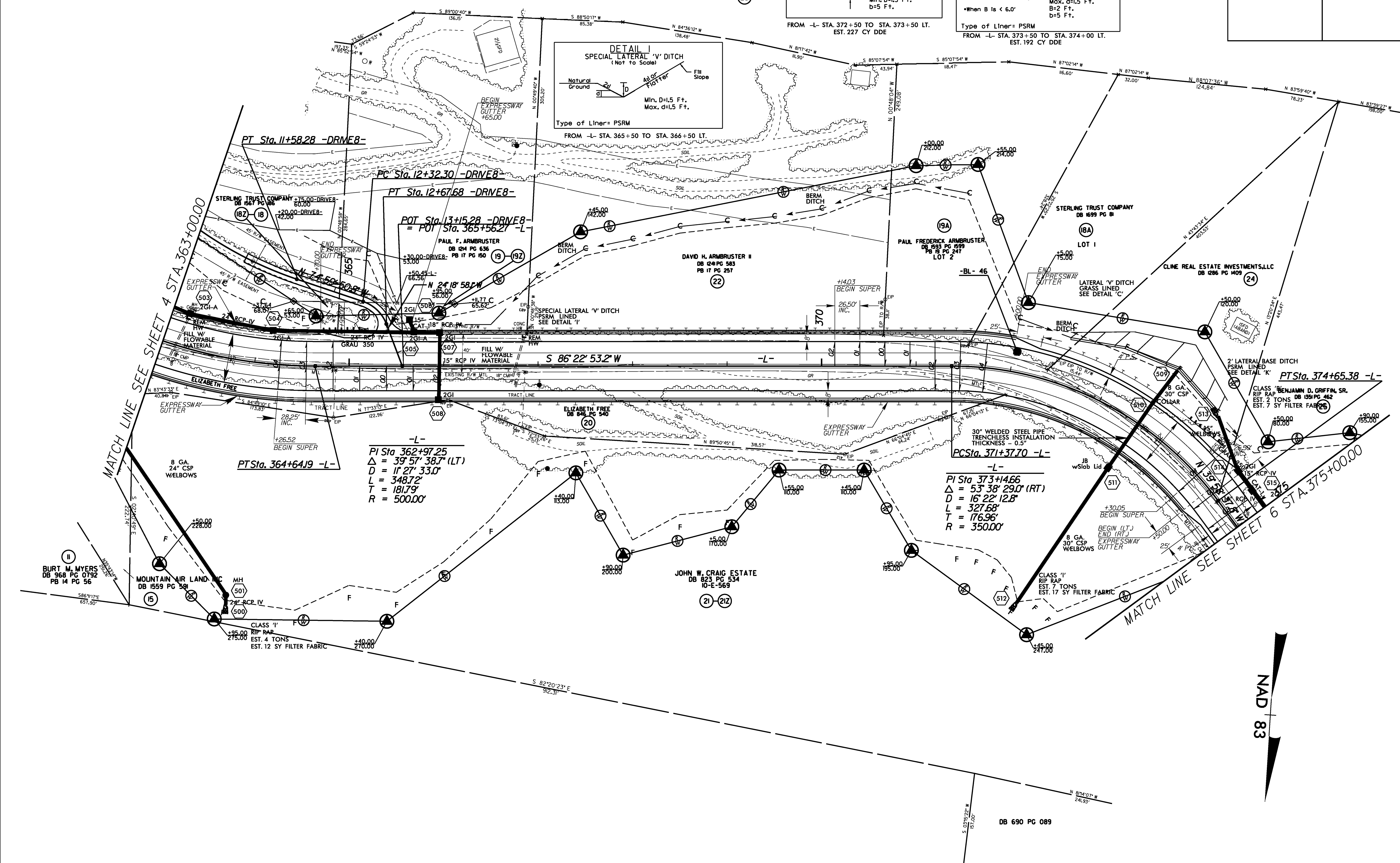
**-DRIVE8-**  
 PI Sta 10+80.9    PI Sta 12+51.24  
 $\Delta = 22^\circ 40' 18.7" (LT)$      $\Delta = 50^\circ 40' 52.7" (RT)$   
 $D = 14' 19" 26.2"$      $D = 143' 14" 22.0"$   
 $L = 158.28'$      $L = 35.38'$   
 $T = 80.9'$      $T = 18.94'$   
 $R = 400.00'$      $R = 40.00'$



E. KATHRYNE MILLER  
DB 213 PG 593

FROM -L- STA. 372+50 TO STA. 373+50 LT.  
EST. 227 CY DDE

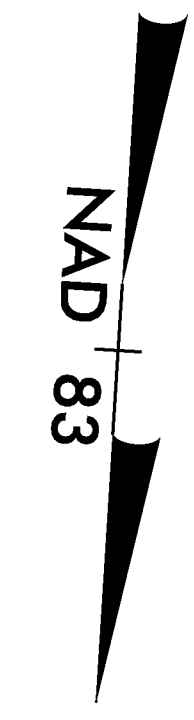
Type of Liner: PSRM  
FROM -L- STA. 373+50 TO STA. 374+00 LT.  
EST. 192 CY DDE



REVISIONS

5/14/99

15-AUG-2010 09:17  
N:\2237c.rd\psh5.dgn



MATCH LINE SEE SHEET 4 STA. 363+00.00

MATCH LINE SEE SHEET 6 STA. 375+00.00

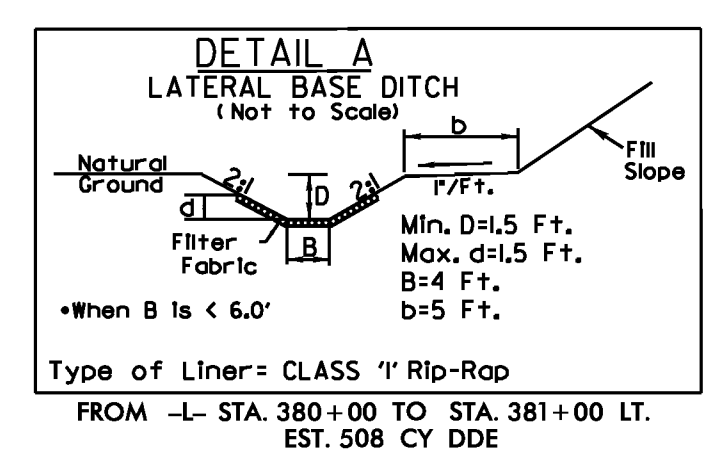
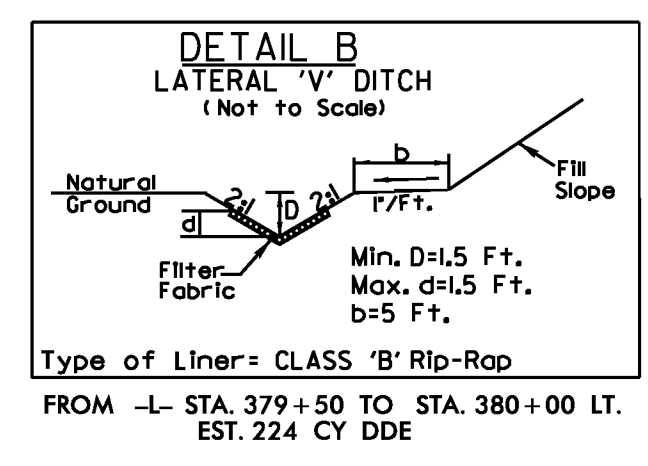
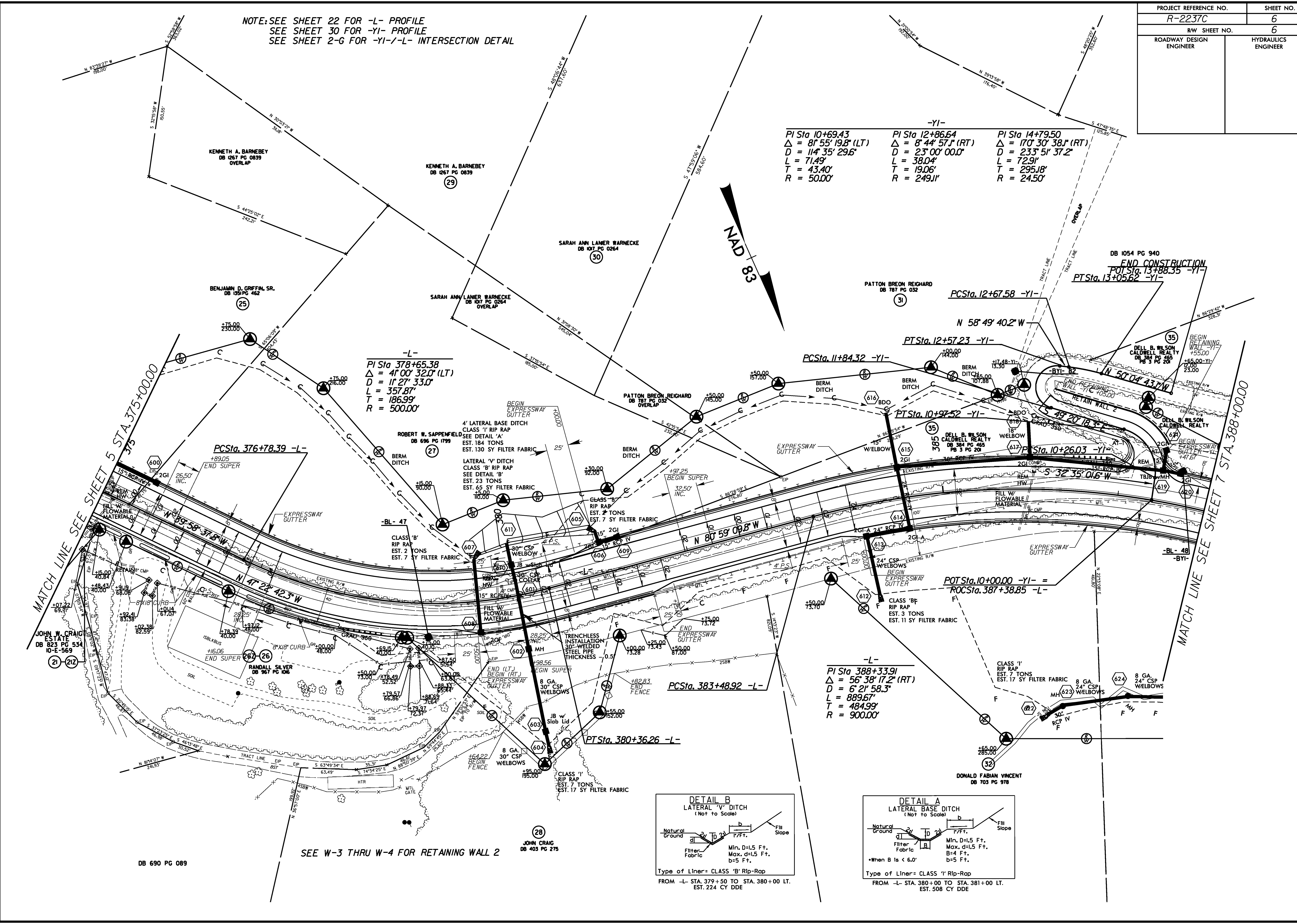
PROJECT REFERENCE NO.	SHEET NO.
R-2237C	6
R/W SHEET NO.	6
ROADWAY DESIGN ENGINEER	HYDRAULICS ENGINEER

NOTE: SEE SHEET 22 FOR -L- PROFILE  
 SEE SHEET 30 FOR -YI- PROFILE  
 SEE SHEET 2-G FOR -YI-/-L- INTERSECTION DETAIL

-YI-	-YI-	-YI-
PI Sta 10+69.43	PI Sta 12+86.64	PI Sta 14+79.50
$\Delta = 81^{\circ} 55' 19.8" (LT)$	$\Delta = 8^{\circ} 44' 57.1" (RT)$	$\Delta = 170^{\circ} 30' 38.1" (RT)$
D = 114' 35" 29.6"	D = 23' 00" 00.0"	D = 233' 51' 37.2"
L = 71.49'	L = 38.04'	L = 72.91'
T = 43.40'	T = 19.06'	T = 295.18'
R = 50.00'	R = 249.11'	R = 24.50'

-L-
PI Sta 378+65.38
$\Delta = 41^{\circ} 00' 32.0" (LT)$
D = 11' 27" 33.0"
L = 357.87'
T = 186.99'
R = 500.00'

-L-
PI Sta 388+33.91
$\Delta = 56^{\circ} 38' 17.2" (RT)$
D = 6' 21" 58.3"
L = 889.67'
T = 484.99'
R = 900.00'



REVISIONS

5/14/99  
 15-AUG-2010 09:17  
 N:\2237c\_r.dwg - psh6.dgn  
 DB 690 PG 089

MATCH LINE SEE SHEET 5 STA. 375+00.00

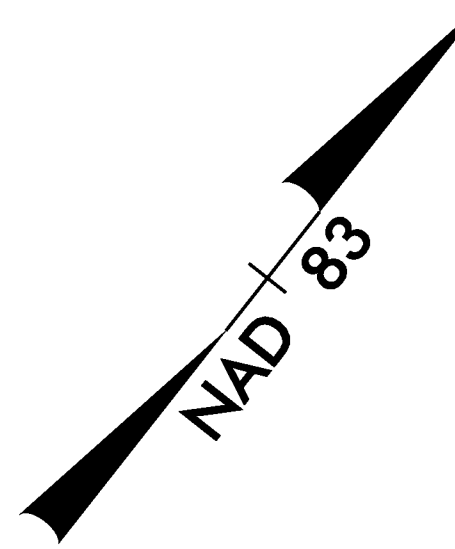
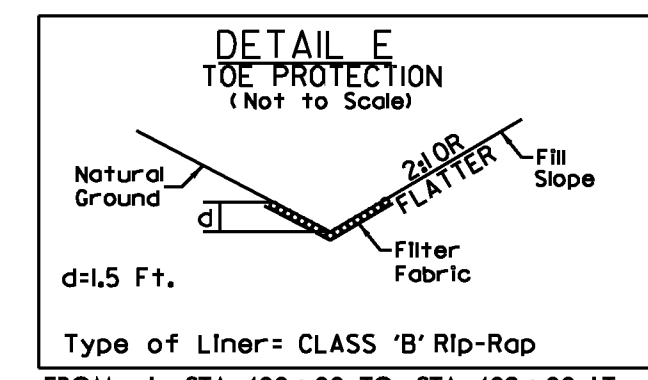
MATCH LINE SEE SHEET 7 STA. 388+00.00

SEE W-3 THRU W-4 FOR RETAINING WALL 2

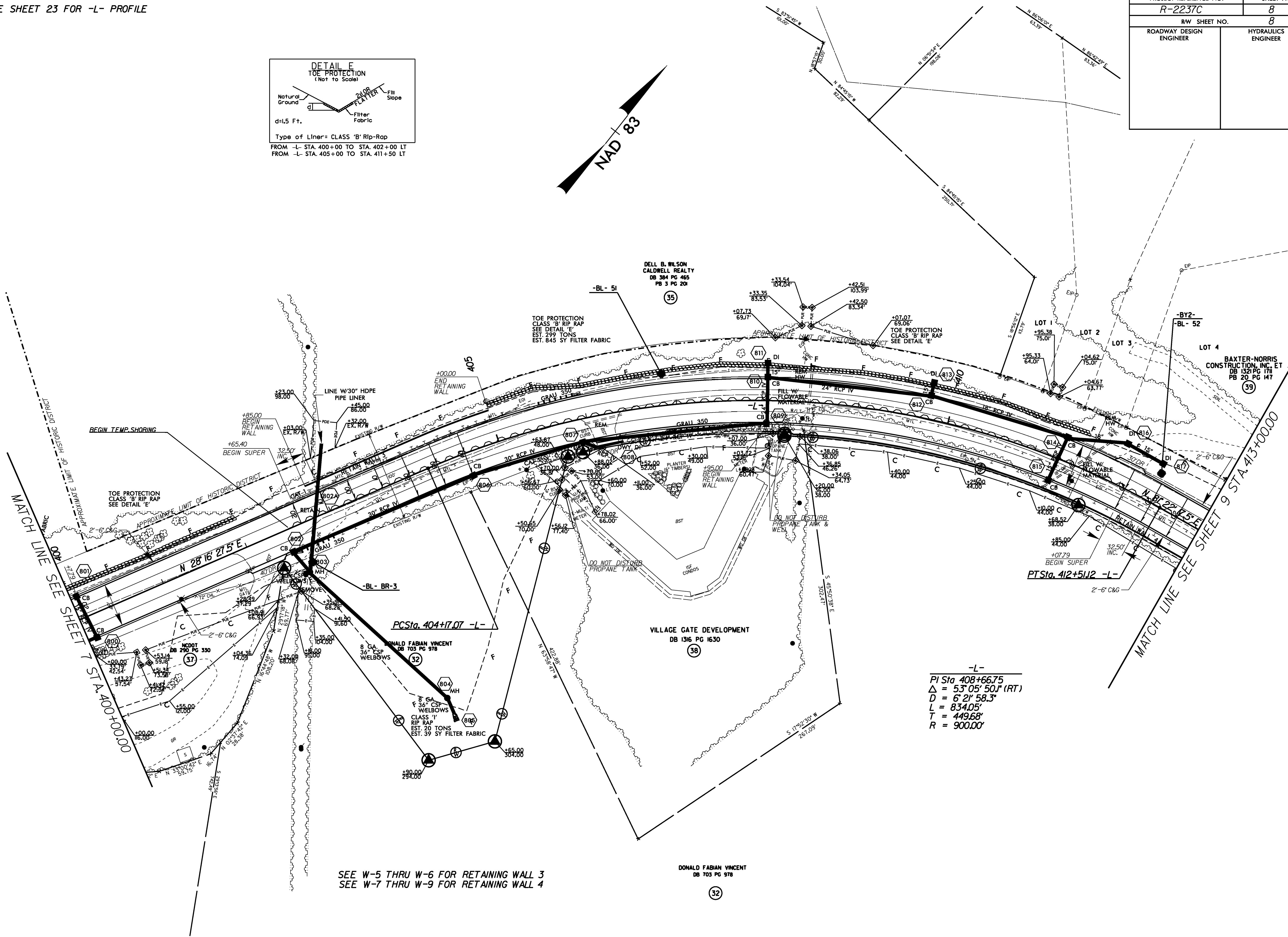


PROJECT REFERENCE NO.	SHEET NO.
R-2237C	8
R/W SHEET NO.	8
ROADWAY DESIGN ENGINEER	HYDRAULICS ENGINEER

NOTE: SEE SHEET 23 FOR -L- PROFILE



REVISIONS



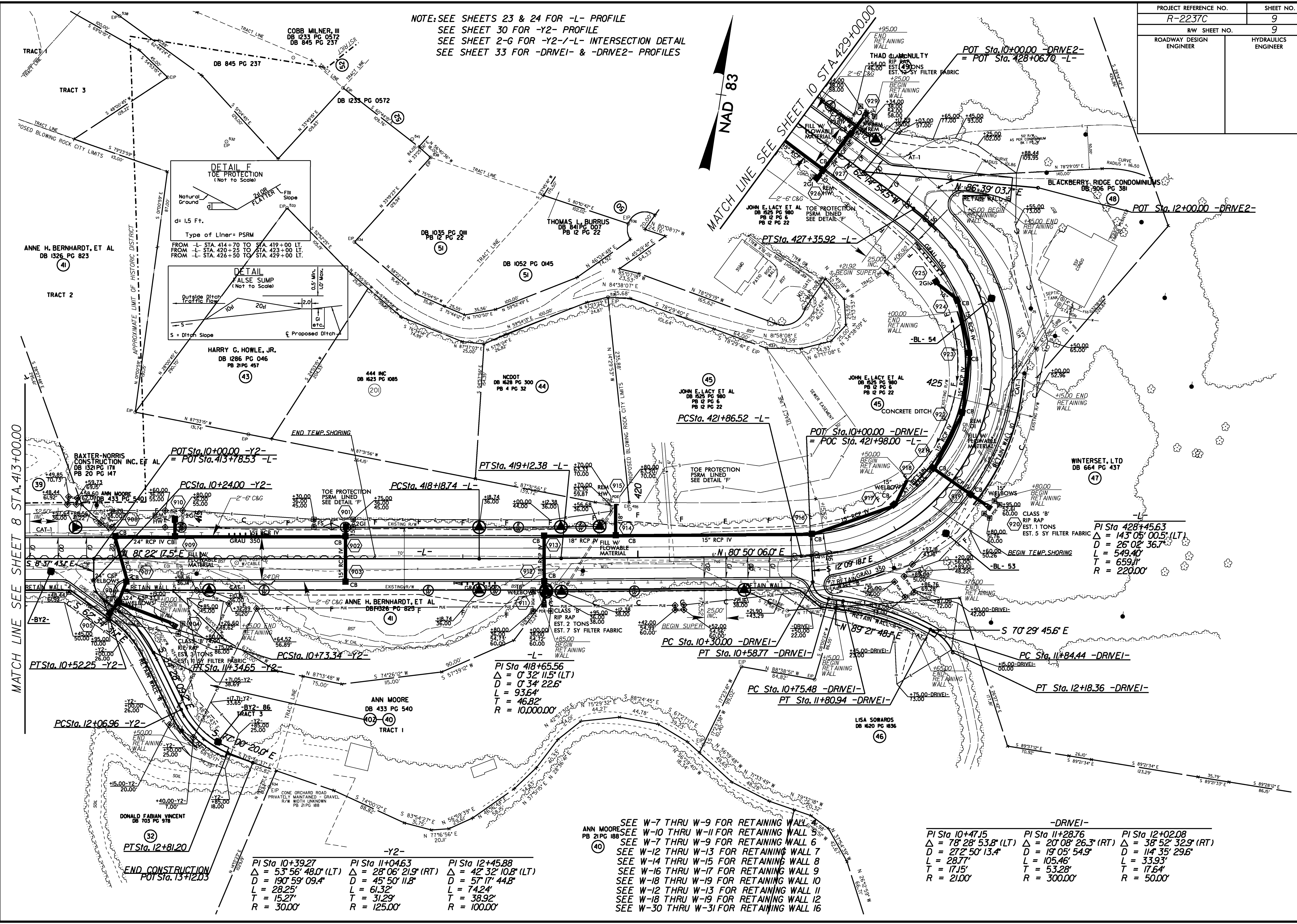
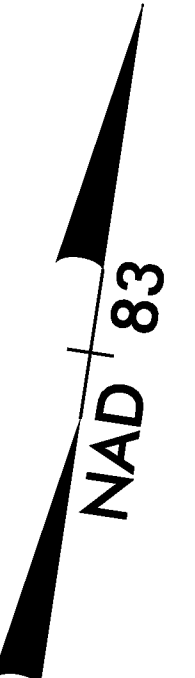
-L-  
 PI Sta 408+66.75  
 $\Delta = 53^{\circ}05'50.1''$  (RT)  
 $D = 6'21.58.3''$   
 $L = 834.05'$   
 $T = 449.68'$   
 $R = 900.00'$

SEE W-5 THRU W-6 FOR RETAINING WALL 3  
 SEE W-7 THRU W-9 FOR RETAINING WALL 4

15-AUG-2011 09:18 N:\2237c.rd\psh8.dgn

PROJECT REFERENCE NO.	SHEET NO.
R-2237C	9
RAW SHEET NO.	9
ROADWAY DESIGN ENGINEER	HYDRAULICS ENGINEER

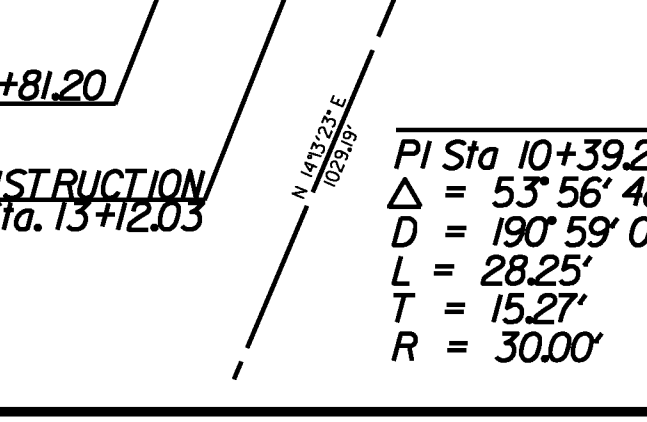
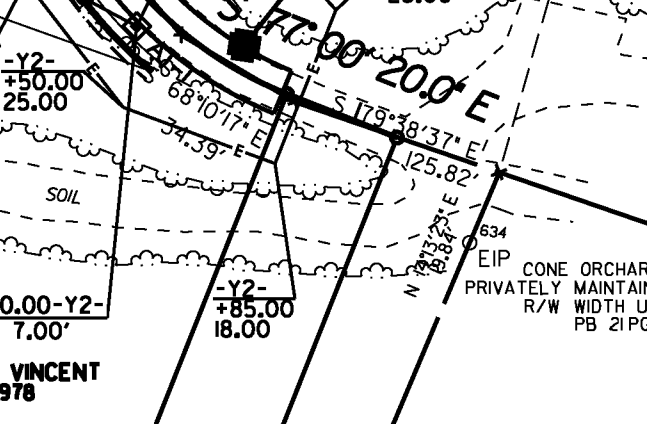
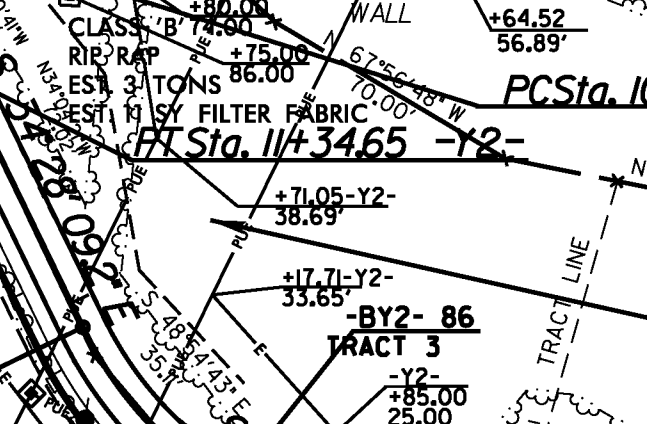
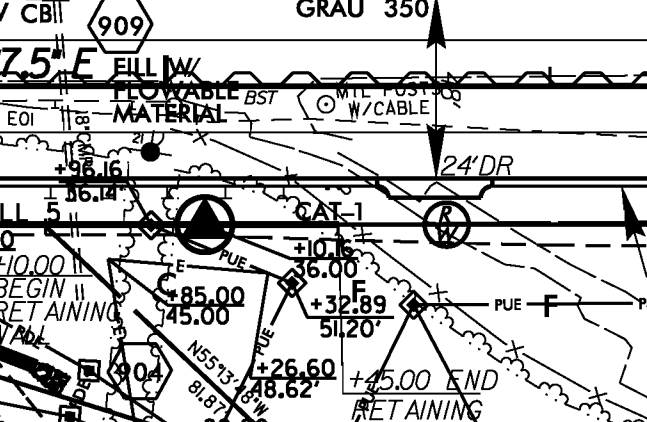
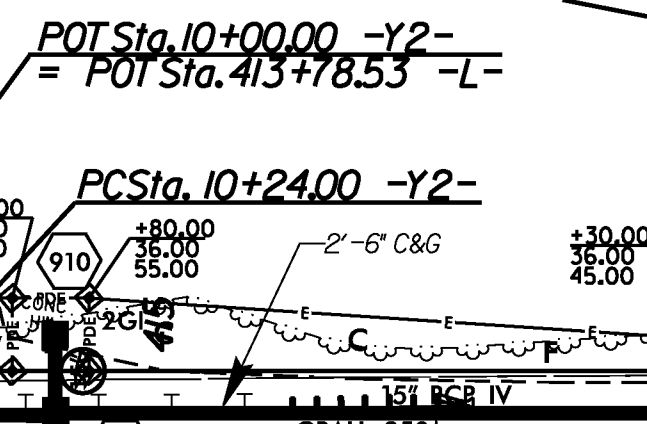
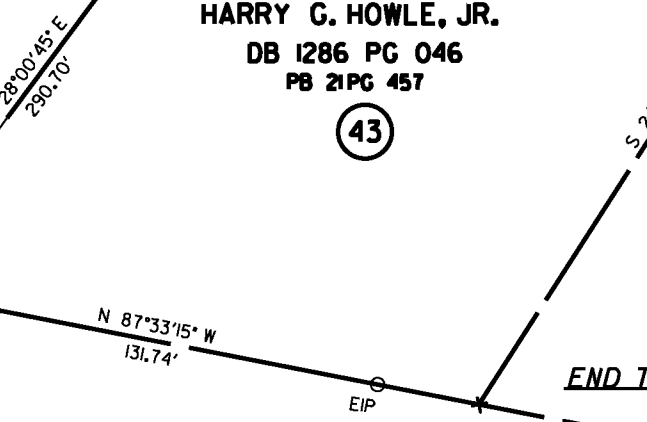
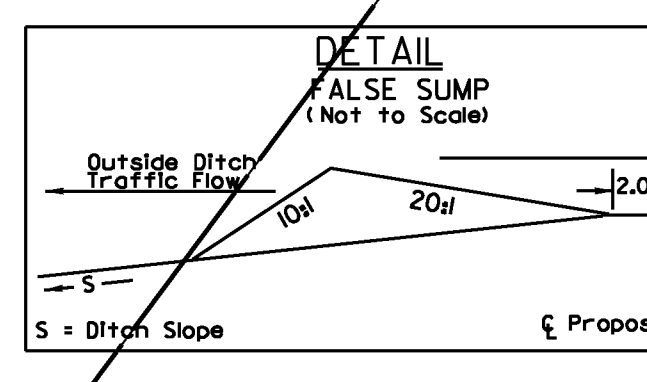
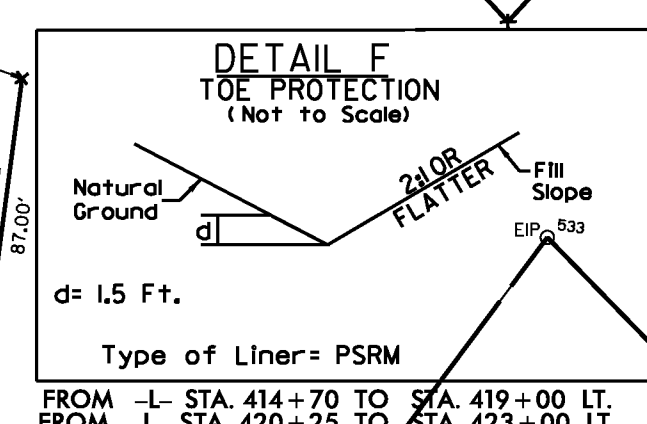
NOTE: SEE SHEETS 23 & 24 FOR -L- PROFILE  
 SEE SHEET 30 FOR -Y2- PROFILE  
 SEE SHEET 2-G FOR -Y2-/L- INTERSECTION DETAIL  
 SEE SHEET 33 FOR -DRIVE1- & -DRIVE2- PROFILES



MATCH LINE SEE SHEET 8 STA. 413+00.00

MATCH LINE SEE SHEET 10 STA. 429+00.00

15-AUG-2011 09:18 N:\2237c-rd\psht9.dgn



PI Sta 10+39.27 Δ = 53° 56' 48.0" (LT) D = 190' 59' 09.4" L = 28.25' T = 15.27' R = 30.00'	PI Sta 11+04.63 Δ = 28° 06' 21.9" (RT) D = 45° 50' 11.8" L = 61.32' T = 31.29' R = 125.00'	PI Sta 12+45.88 Δ = 42° 32' 10.8" (LT) D = 57° 17' 44.8" L = 74.24' T = 38.92' R = 100.00'
---	---	---

SEE W-7 THRU W-9 FOR RETAINING WALL 4  
 SEE W-10 THRU W-11 FOR RETAINING WALL 5  
 SEE W-7 THRU W-9 FOR RETAINING WALL 6  
 SEE W-12 THRU W-13 FOR RETAINING WALL 7  
 SEE W-14 THRU W-15 FOR RETAINING WALL 8  
 SEE W-16 THRU W-17 FOR RETAINING WALL 9  
 SEE W-18 THRU W-19 FOR RETAINING WALL 10  
 SEE W-12 THRU W-13 FOR RETAINING WALL 11  
 SEE W-18 THRU W-19 FOR RETAINING WALL 12  
 SEE W-30 THRU W-31 FOR RETAINING WALL 16

PI Sta 10+47.15 Δ = 78° 28' 53.8" (LT) D = 272' 50' 13.4" L = 28.77' T = 17.55' R = 21.00'	PI Sta 11+28.76 Δ = 20° 08' 26.3" (RT) D = 19' 05' 54.9" L = 105.46' T = 53.28' R = 300.00'	PI Sta 12+02.08 Δ = 38° 52' 32.9" (RT) D = 114' 35' 29.6" L = 33.93' T = 17.64' R = 50.00'
---	--	---