
Appendix A: Figures

Carolina Bays Parkway Extension

North Carolina + South Carolina



NCDOT Project 44604
 SCDOT Project P029554

From SC 9 in Horry County, SC
 to US 17 Shallotte Bypass
 in Brunswick County, NC

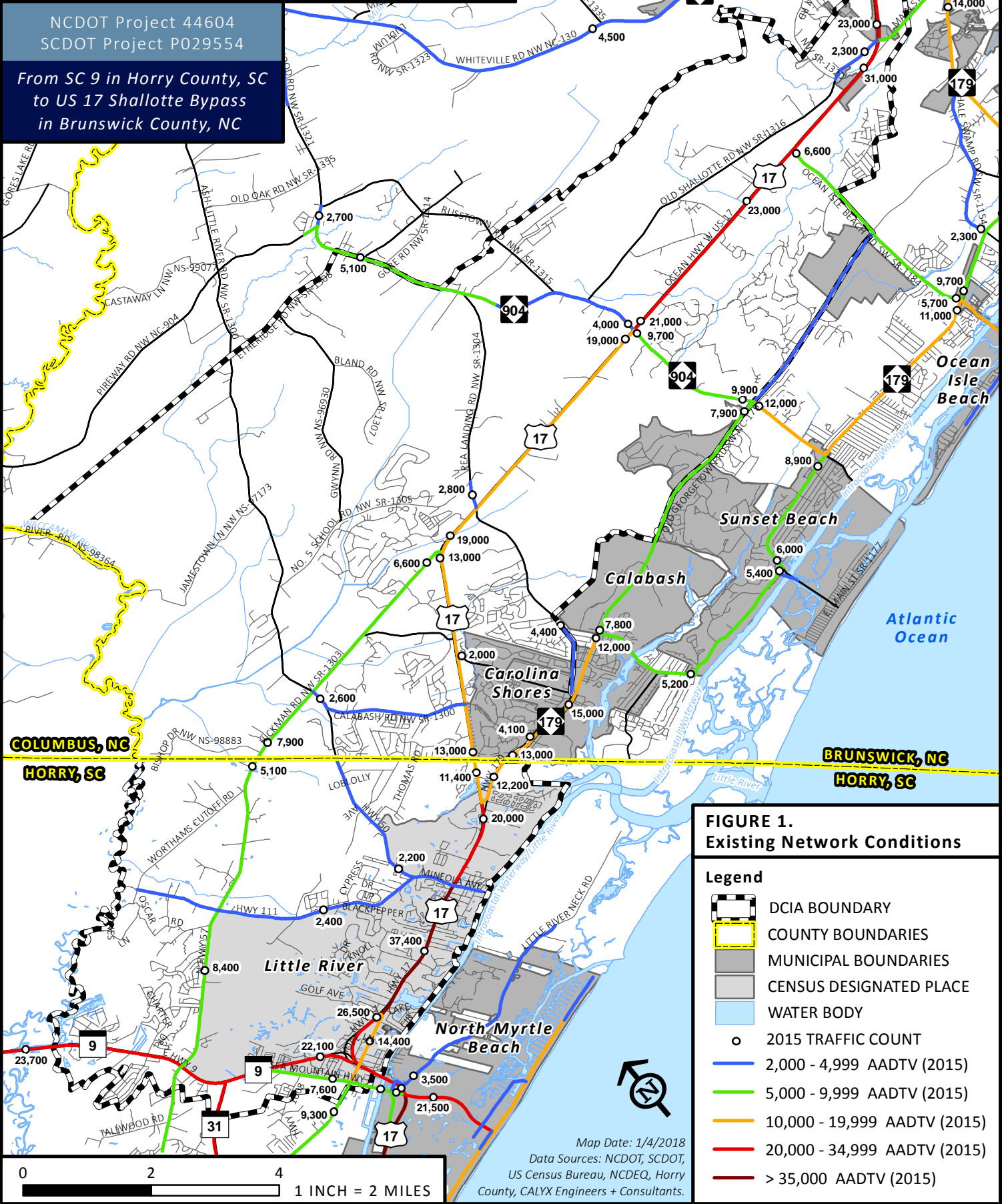


FIGURE 1.
Existing Network Conditions

Legend

- DCIA BOUNDARY
- COUNTY BOUNDARIES
- MUNICIPAL BOUNDARIES
- CENSUS DESIGNATED PLACE
- WATER BODY
- 2015 TRAFFIC COUNT
- 2,000 - 4,999 AADTV (2015)
- 5,000 - 9,999 AADTV (2015)
- 10,000 - 19,999 AADTV (2015)
- 20,000 - 34,999 AADTV (2015)
- > 35,000 AADTV (2015)

0 2 4
 1 INCH = 2 MILES

Map Date: 1/4/2018
 Data Sources: NCDOT, SCDOT,
 US Census Bureau, NCDEQ, Horry
 County, CALYX Engineers + Consultants.

Carolina Bays Parkway Extension

North Carolina + South Carolina

NCDOT Project 44604
 SCDOT Project P029554

From SC 9 in Horry County, SC
 to US 17 Shallotte Bypass
 in Brunswick County, NC

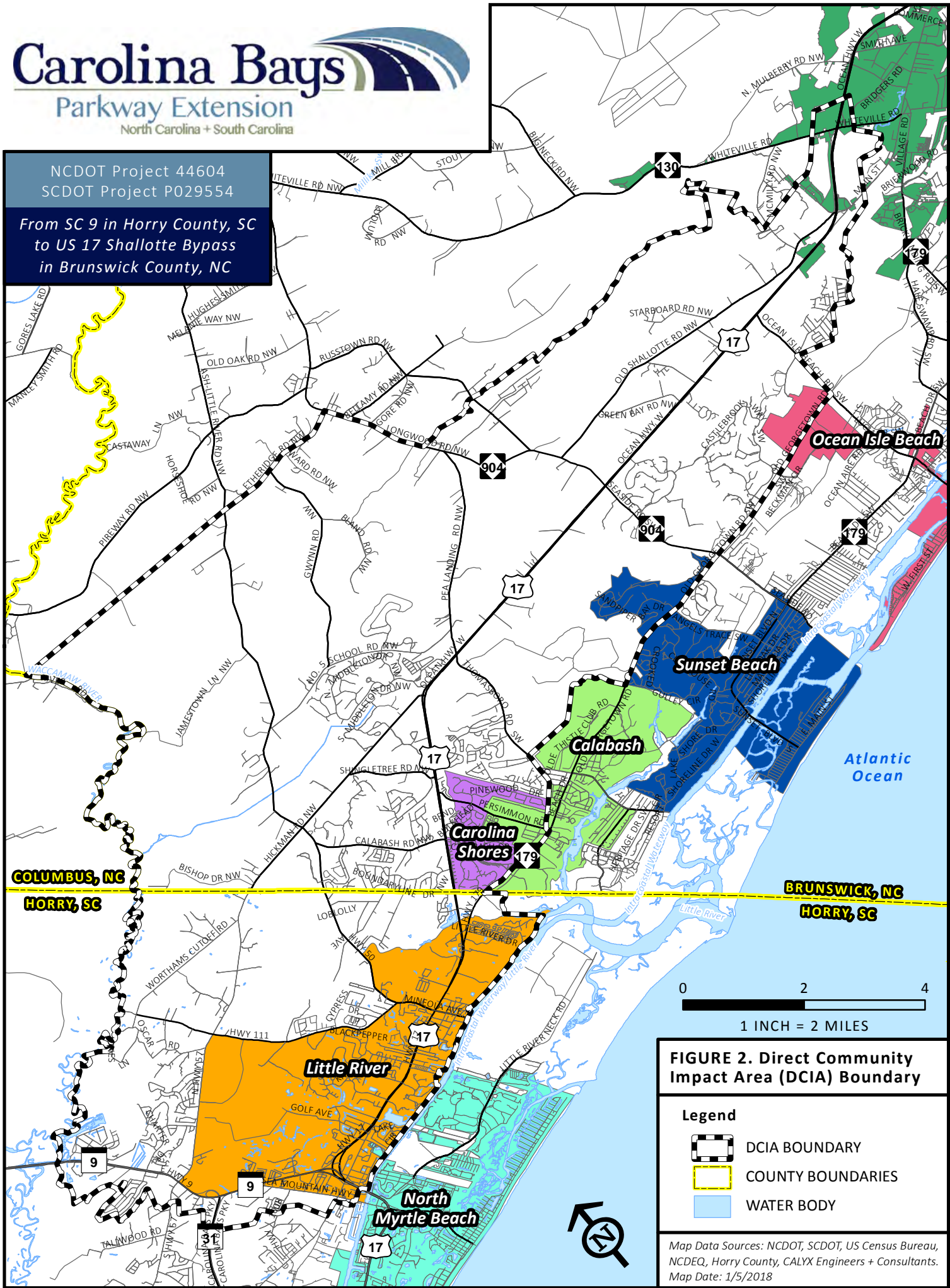


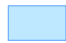
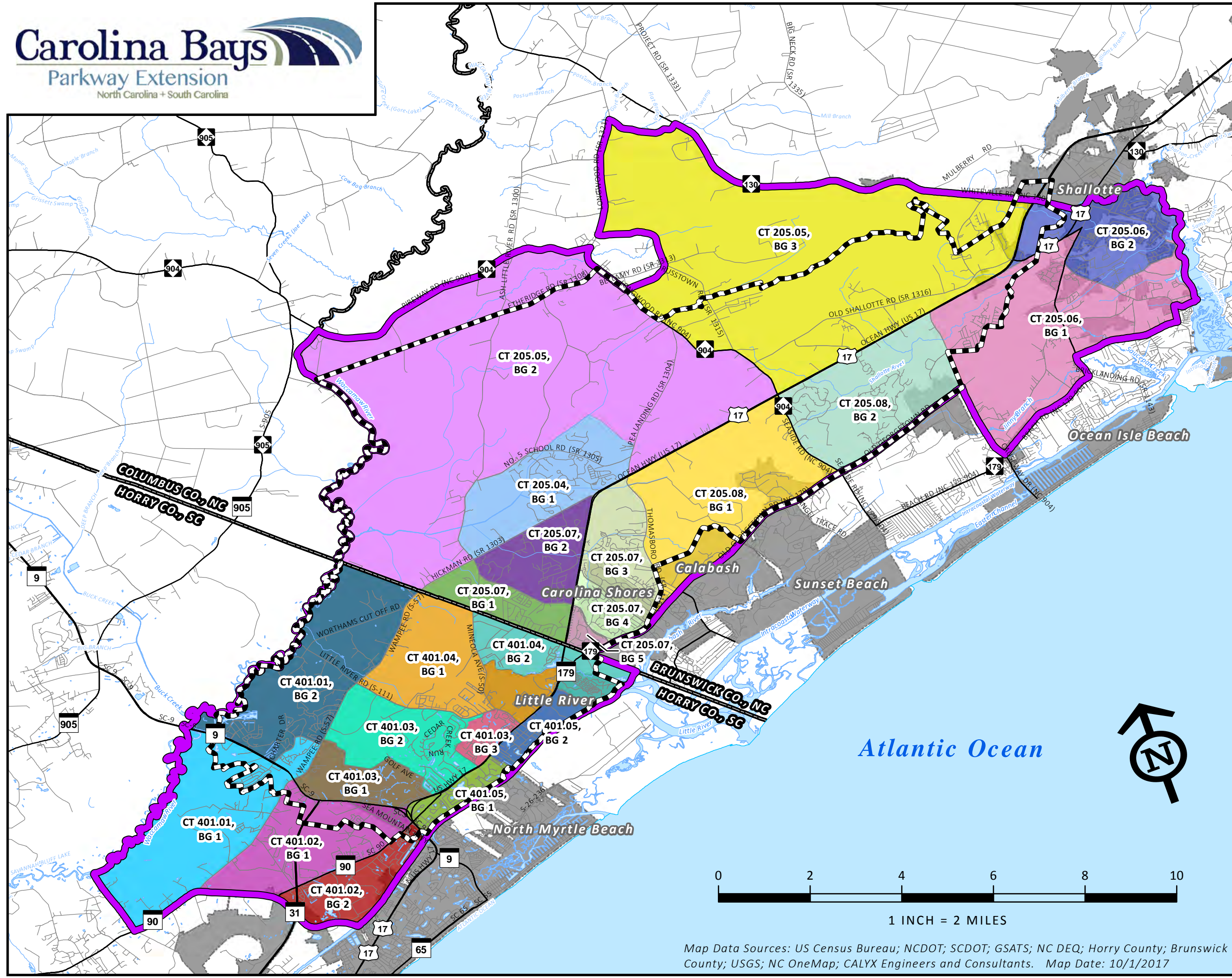


FIGURE 2. Direct Community Impact Area (DCIA) Boundary

- Legend**
-  DCIA BOUNDARY
 -  COUNTY BOUNDARIES
 -  WATER BODY

Map Data Sources: NCDOT, SCDOT, US Census Bureau, NCDEQ, Horry County, CALYX Engineers + Consultants.
 Map Date: 1/5/2018

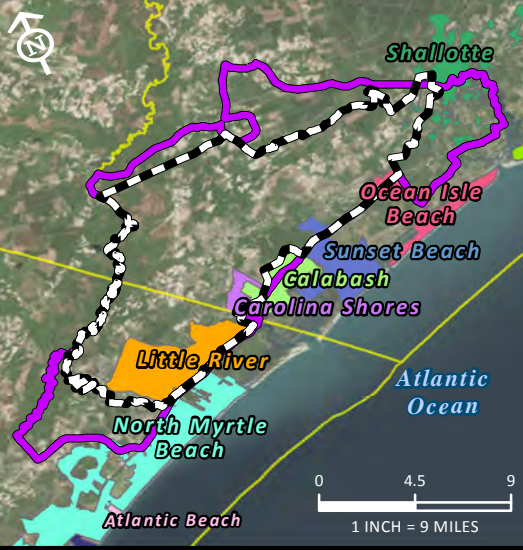


Carolina Bays Parkway Extension

NCDOT Project 44604
SCDOT Project P029554

From SC 9 in Horry County, SC to US 17 Shallotte Bypass in Brunswick County, NC

FIGURE 3. Demographic Study Area (DSA) Boundary

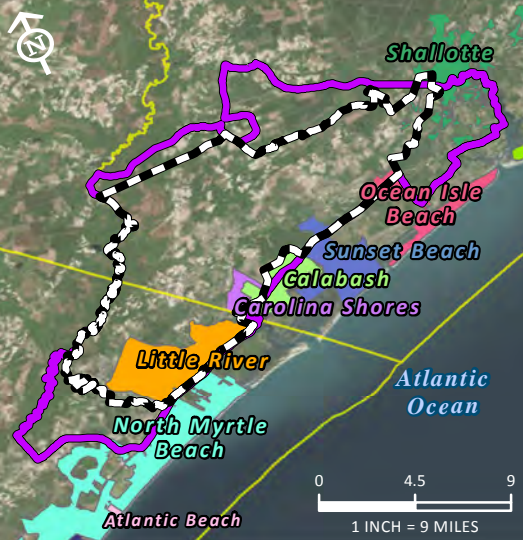
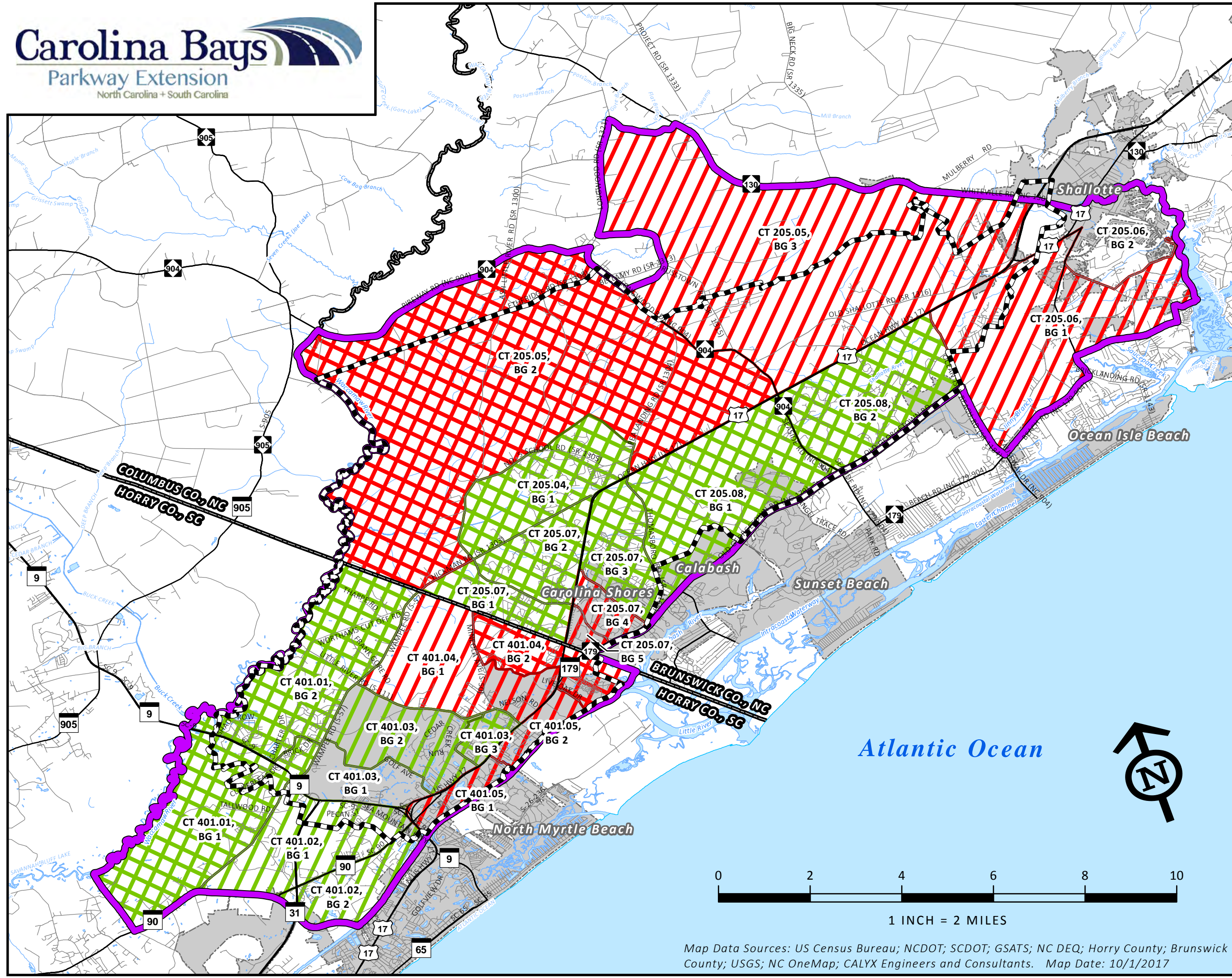


- Legend**
- DCIA BOUNDARY
 - DSA BOUNDARY
 - COUNTY BOUNDARIES
 - STREAM
 - WATER BODY
 - PLACES & MUNICIPALITIES

Map Data Sources: US Census Bureau; NCDOT; SCDOT; GSATS; NC DEQ; Horry County; Brunswick County; USGS; NC OneMap; CALYX Engineers and Consultants. Map Date: 10/1/2017

From SC 9 in Horry County, SC to US 17 Shallotte Bypass in Brunswick County, NC

FIGURE 3A. DSA Population Growth Trends by Block Group

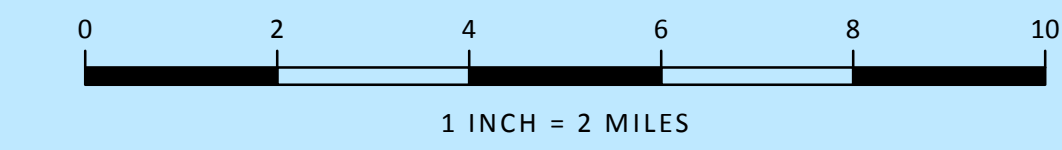


Legend

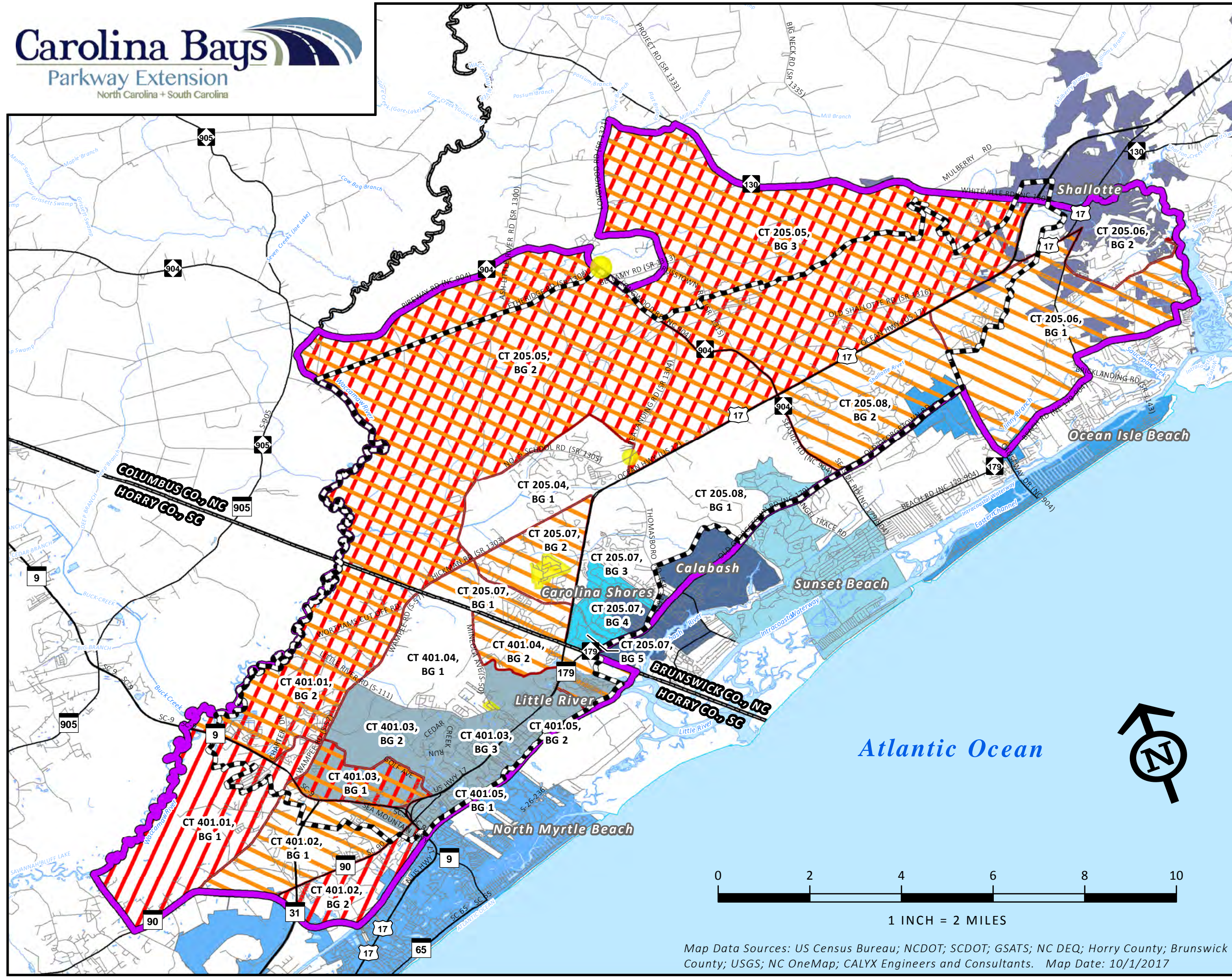
- DCIA BOUNDARY
- DSA BOUNDARY
- COUNTY BOUNDARIES
- STREAM
- WATER BODY
- PLACES & MUNICIPALITIES

Relative Growth 2000-2010

- DECLINING
- BELOW AVERAGE: 10 Percentage Points or More Below County Average
- AVERAGE: Within 10 Percentage Points of County Average (Above or Below)
- HIGH: 10 - 25 Percentage Points Above County Average
- HIGHEST: More than 25 Percentage Points Above County Average



Map Data Sources: US Census Bureau; NCDOT; SCDOT; GSATS; NC DEQ; Horry County; Brunswick County; USGS; NC OneMap; CALYX Engineers and Consultants. Map Date: 10/1/2017

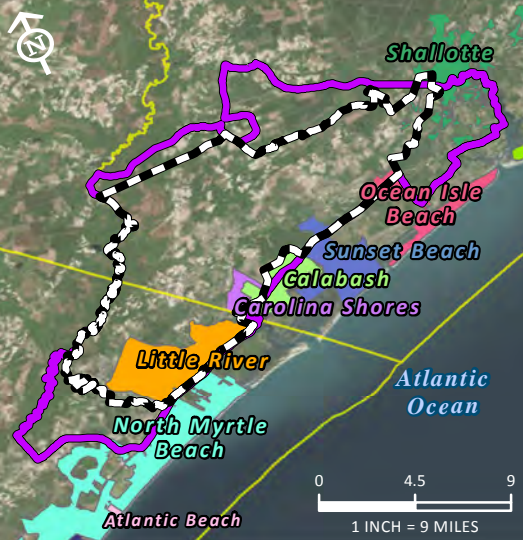


Carolina Bays Parkway Extension

NCDOT Project 44604
SCDOT Project P029554

From SC 9 in Horry County, SC to US 17 Shallotte Bypass in Brunswick County, NC

FIGURE 3B. EJ Populations in DSA by Block Group



Legend

- DCIA BOUNDARY
- DSA BOUNDARY
- COUNTY BOUNDARIES
- STREAM
- WATER BODY
- KNOWN EJ COMMUNITY

Places & Municipalities

- NORTH MYRTLE BEACH
- LITTLE RIVER (CDP)
- CAROLINA SHORES
- CALABASH
- SUNSET BEACH
- OCEAN ISLE BEACH
- SHALLOTTE

EJ Threshold Criterion Met

- LOW-INCOME
- MINORITY

Map Data Sources: US Census Bureau; NCDOT; SCDOT; GSATS; NC DEQ; Horry County; Brunswick County; USGS; NC OneMap; CALYX Engineers and Consultants. Map Date: 10/1/2017

NCDOT Project 44604
SCDOT Project P029554

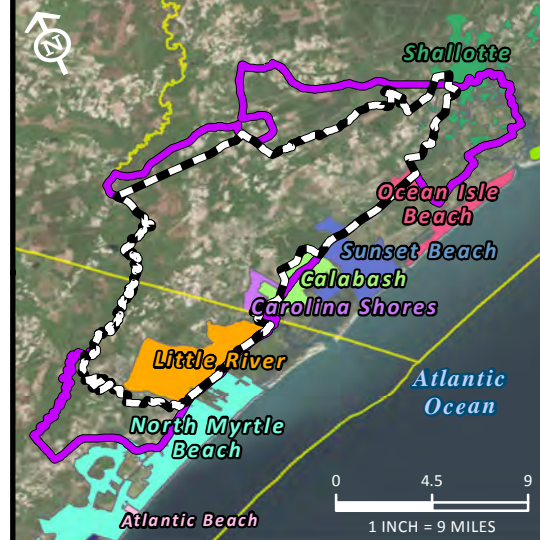
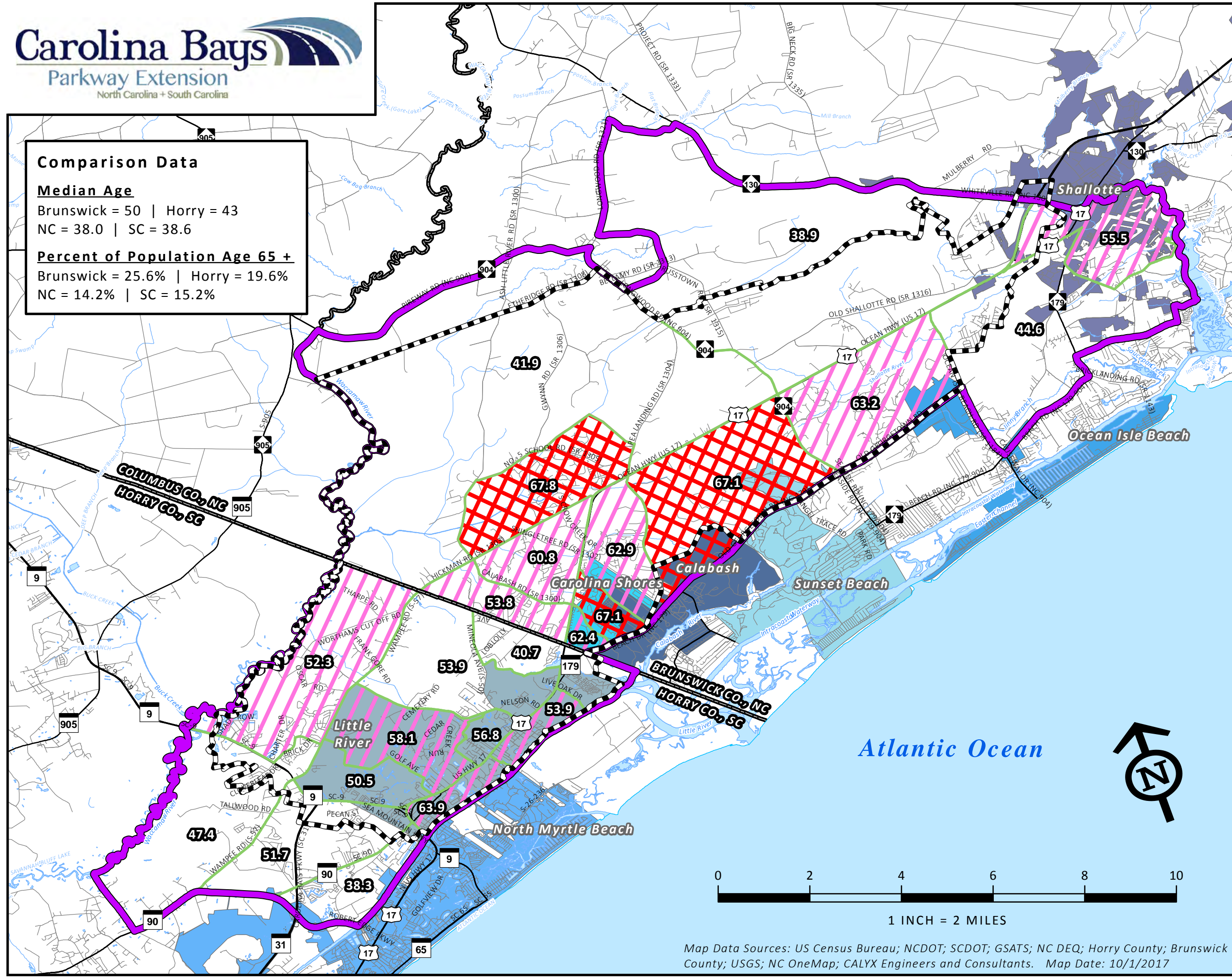
From SC 9 in Horry County, SC to US 17 Shallotte Bypass in Brunswick County, NC

FIGURE 3C. DSA Population Age Trends by Block Group

Comparison Data

Median Age
Brunswick = 50 | Horry = 43
NC = 38.0 | SC = 38.6

Percent of Population Age 65 +
Brunswick = 25.6% | Horry = 19.6%
NC = 14.2% | SC = 15.2%



Legend

- DCIA BOUNDARY
- DSA BOUNDARY
- COUNTY BOUNDARIES
- STREAM
- WATER BODY

Places & Municipalities

- NORTH MYRTLE BEACH
- LITTLE RIVER (CDP)
- CAROLINA SHORES
- CALABASH
- SUNSET BEACH
- OCEAN ISLE BEACH
- SHALLOTTE

Percent of Population Age 65 + (Label = Median Age of BG)

- 0% - 29.9% AGE 65 +
- 30% - 49.9% AGE 65 +
- 50% OR MORE AGE 65 +

Map Data Sources: US Census Bureau; NCDOT; SCDOT; GSATS; NC DEQ; Horry County; Brunswick County; USGS; NC OneMap; CALYX Engineers and Consultants. Map Date: 10/1/2017

Comparison Data

Percent of Population in Labor Force (Age 16+)

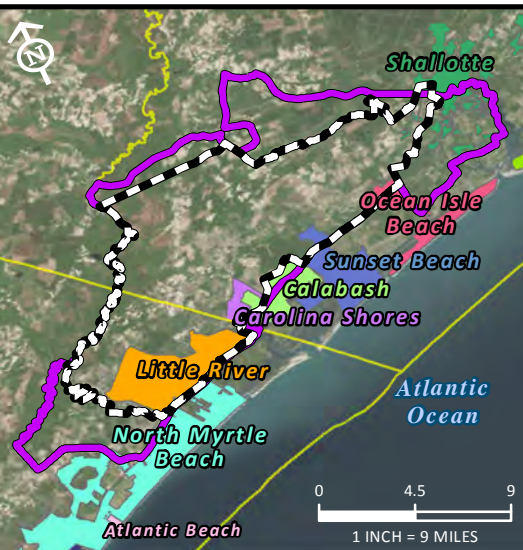
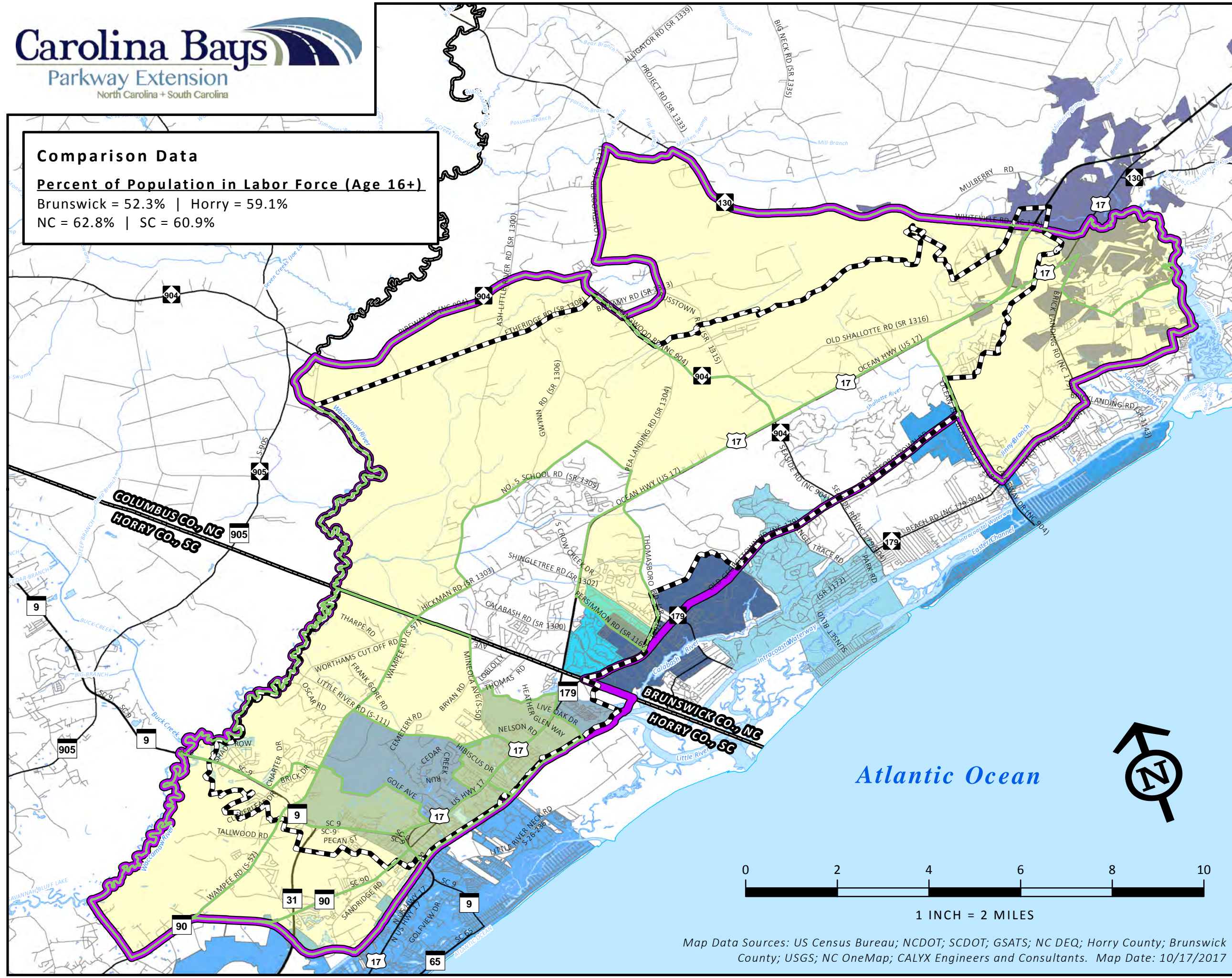
Brunswick = 52.3% | Horry = 59.1%
 NC = 62.8% | SC = 60.9%

Carolina Bays Parkway Extension

NCDOT Project 44604
 SCDOT Project P029554

From SC 9 in Horry County, SC to US 17 Shallotte Bypass in Brunswick County, NC

FIGURE 3D. DSA Labor Force Distribution

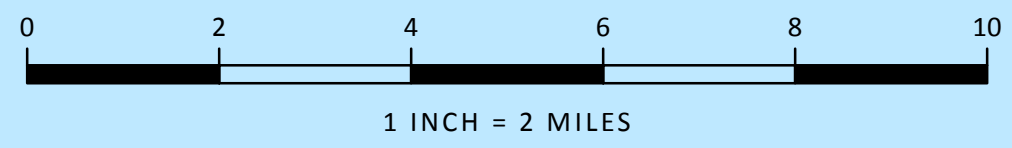


Legend

- DCIA BOUNDARY
- DSA BOUNDARY
- COUNTY BOUNDARIES
- STREAM
- WATER BODY
- TOTAL POPULATION AGE 16+ IN LABOR FORCE IS WITHIN 10 PERCENTAGE POINTS OF COUNTYWIDE PERCENTAGE

Places & Municipalities

- NORTH MYRTLE BEACH
- LITTLE RIVER (CDP)
- CAROLINA SHORES
- CALABASH
- SUNSET BEACH
- OCEAN ISLE BEACH
- SHALLOTTE

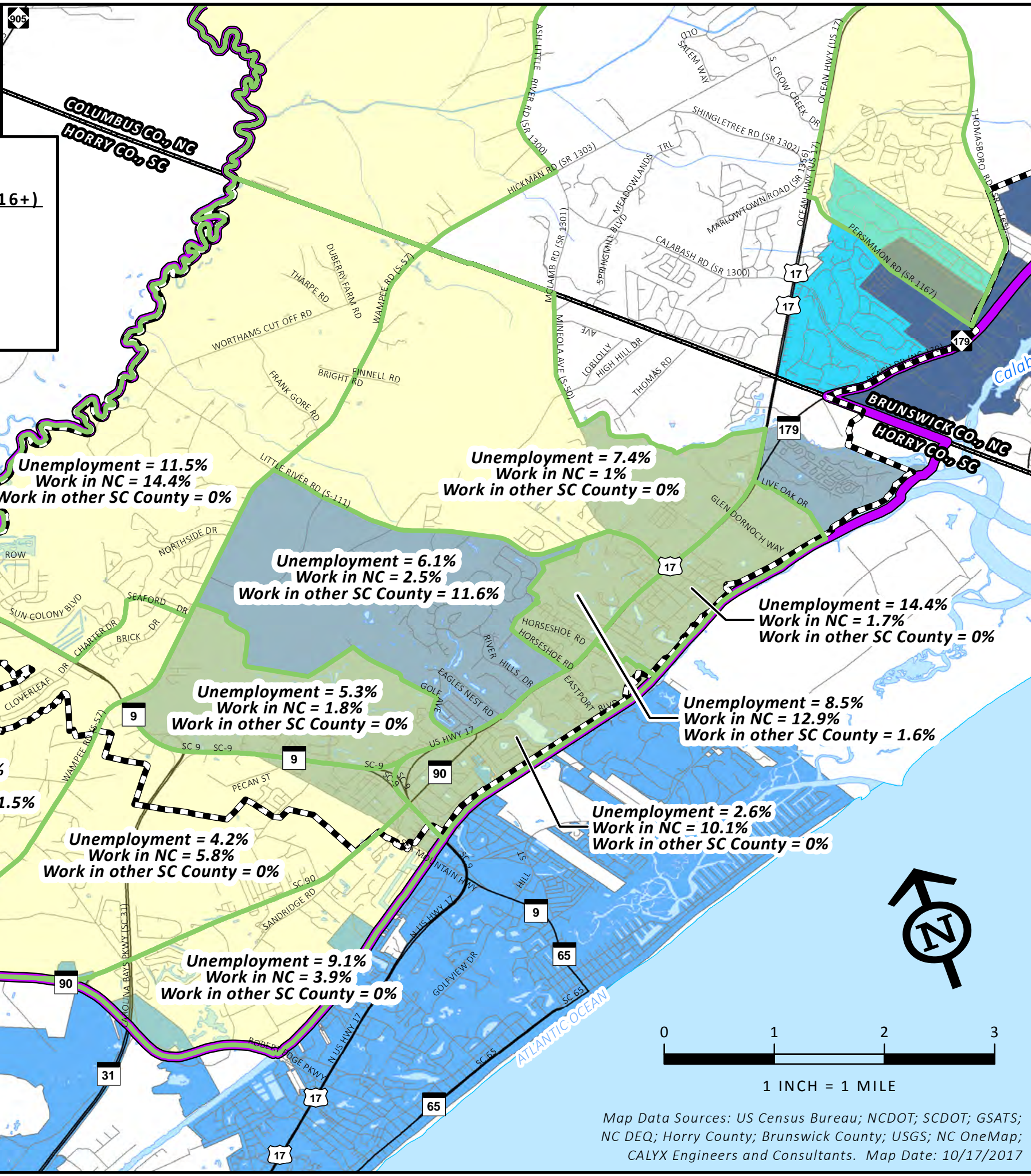


Map Data Sources: US Census Bureau; NCDOT; SCDOT; GSATS; NC DEQ; Horry County; Brunswick County; USGS; NC OneMap; CALYX Engineers and Consultants. Map Date: 10/17/2017

Comparison Data

Percent of Population in Labor Force (Age 16+)
 Brunswick = 52.3% | Horry = 59.1%
 NC = 62.8% | SC = 60.9%

Unemployment Rate
 Brunswick = 11.4% | Horry = 8.7%
 NC = 9.4% | SC = 9.5%

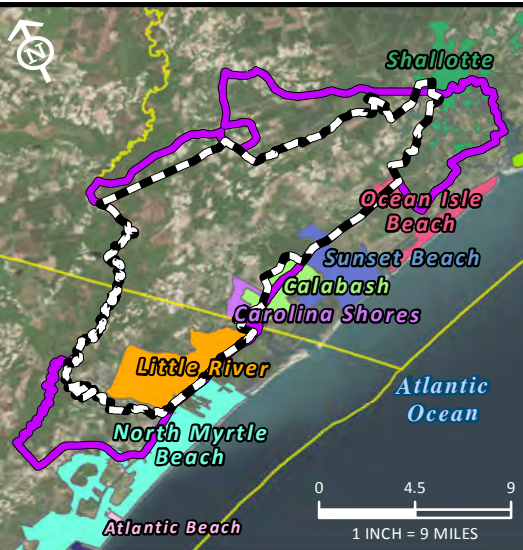


Carolina Bays Parkway Extension

NCDOT Project 44604
 SCDOT Project P029554

From SC 9 in Horry County, SC to US 17 Shallotte Bypass in Brunswick County, NC

FIGURE 3E. DSA Employment & Commuter Characteristics - Horry County



- Legend**
- DCIA BOUNDARY
 - DSA BOUNDARY
 - COUNTY BOUNDARIES
 - STREAM
 - WATER BODY
 - TOTAL POPULATION AGE 16+ IN LABOR FORCE IS WITHIN 10 PERCENTAGE POINTS OF COUNTYWIDE PERCENTAGE

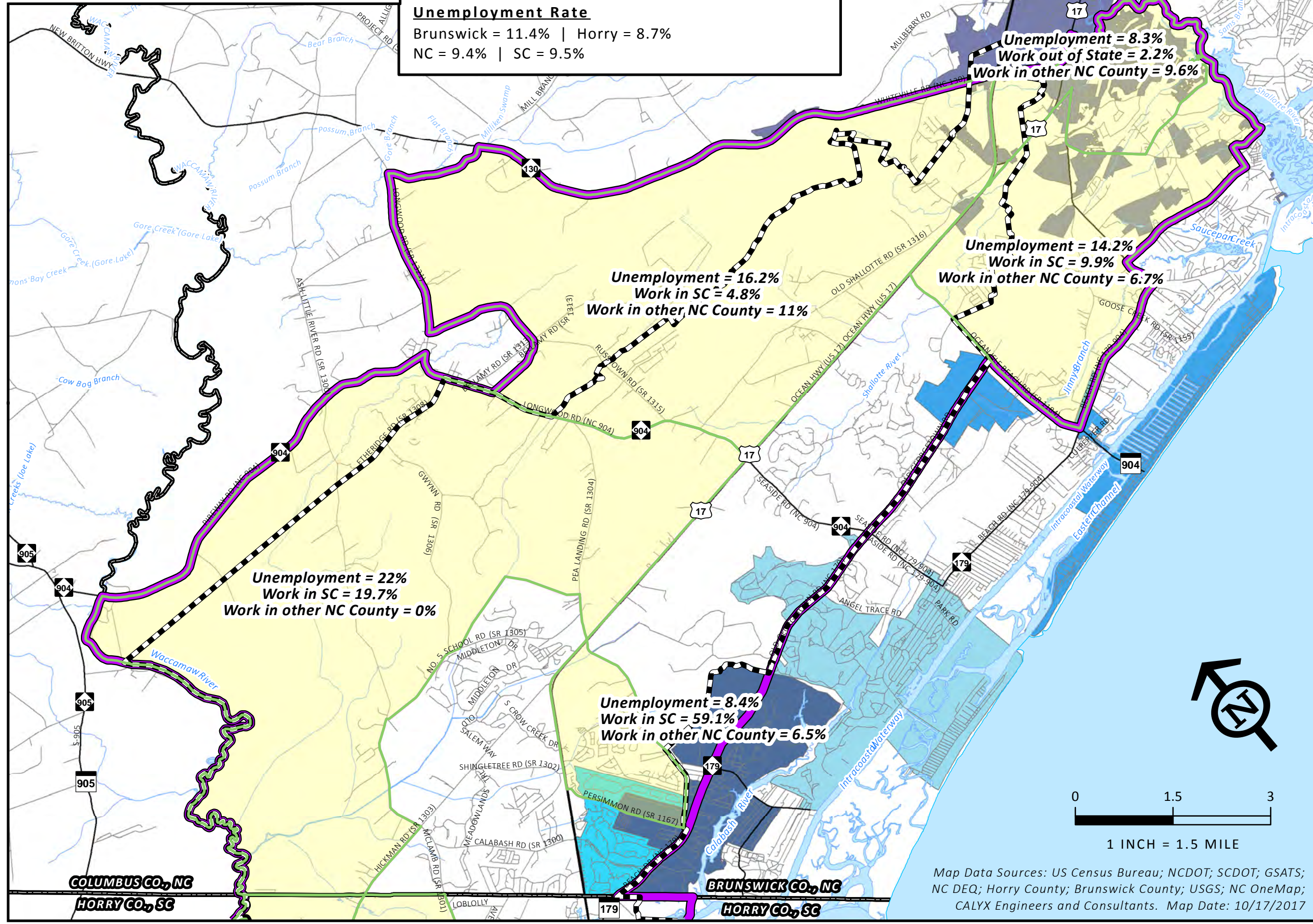
- Places & Municipalities**
- NORTH MYRTLE BEACH
 - LITTLE RIVER (CDP)
 - CAROLINA SHORES
 - CALABASH
 - SUNSET BEACH
 - OCEAN ISLE BEACH
 - SHALLOTTE

Map Data Sources: US Census Bureau; NCDOT; SCDOT; GSATS; NC DEQ; Horry County; Brunswick County; USGS; NC OneMap; CALYX Engineers and Consultants. Map Date: 10/17/2017

Comparison Data

Percent of Population in Labor Force (Age 16+)
 Brunswick = 52.3% | Horry = 59.1%
 NC = 62.8% | SC = 60.9%

Unemployment Rate
 Brunswick = 11.4% | Horry = 8.7%
 NC = 9.4% | SC = 9.5%

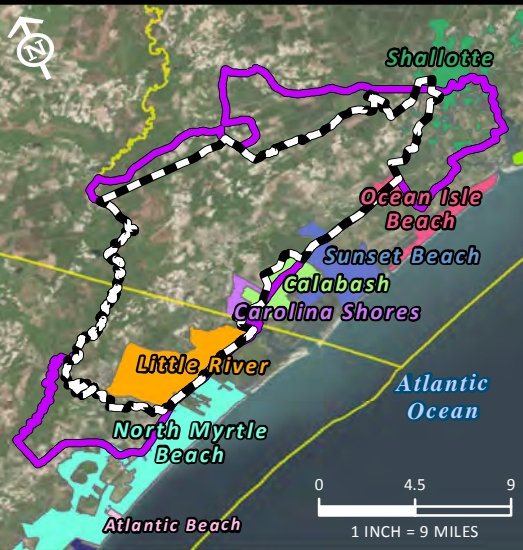


Carolina Bays Parkway Extension

NCDOT Project 44604
 SCDOT Project P029554

From SC 9 in Horry County, SC to US 17 Shallotte Bypass in Brunswick County, NC

FIGURE 3F. DSA Employment & Commuter Characteristics - Brunswick County



- Legend**
- DCIA BOUNDARY
 - DSA BOUNDARY
 - COUNTY BOUNDARIES
 - STREAM
 - WATER BODY
 - TOTAL POPULATION AGE 16+ IN LABOR FORCE IS WITHIN 10 PERCENTAGE POINTS OF COUNTYWIDE PERCENTAGE



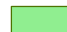






- Places & Municipalities**
- NORTH MYRTLE BEACH
 - LITTLE RIVER (CDP)
 - CAROLINA SHORES
 - CALABASH
 - SUNSET BEACH
 - OCEAN ISLE BEACH
 - SHALLOTTE

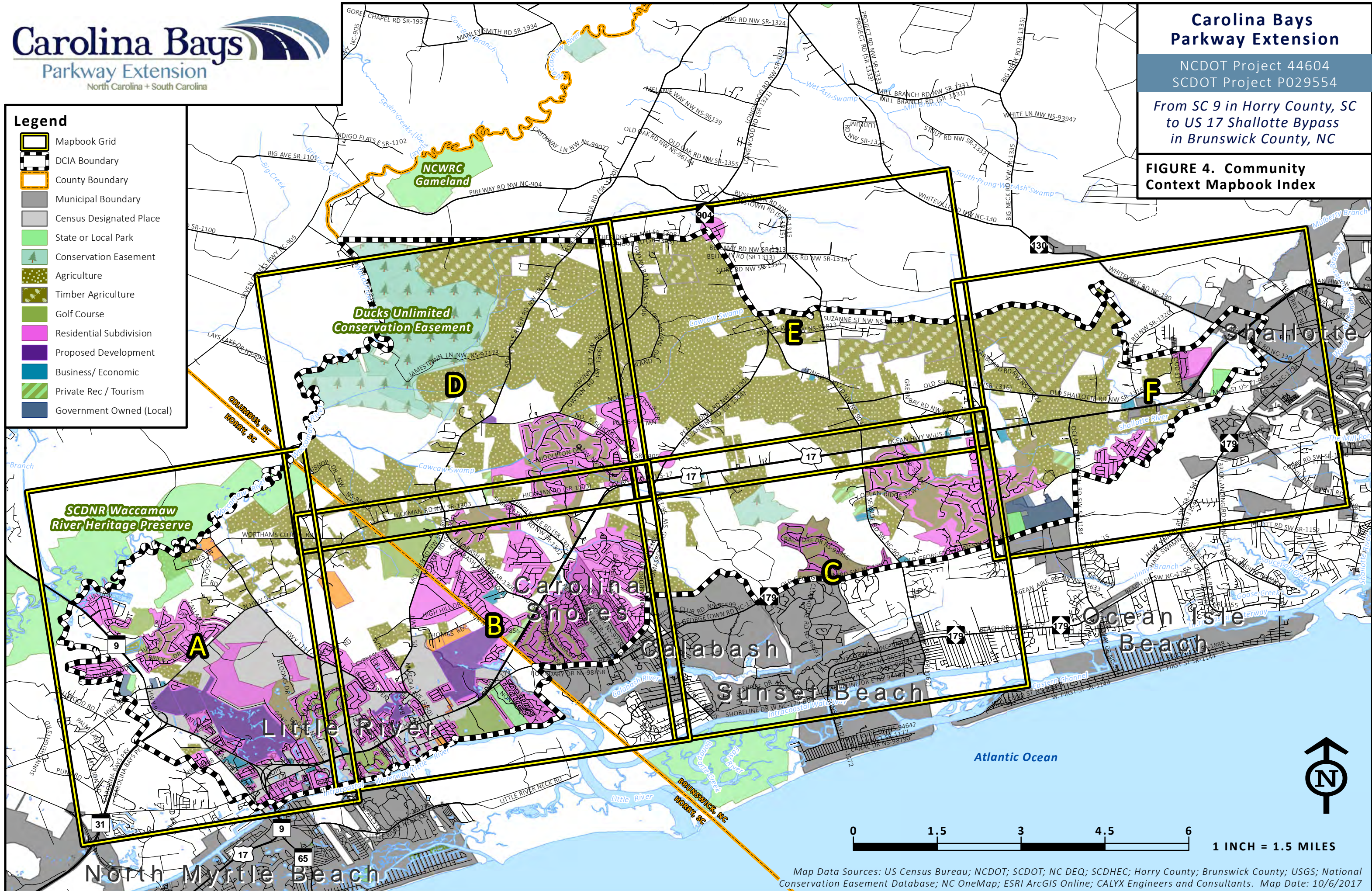
0 1.5 3
 1 INCH = 1.5 MILE

Map Data Sources: US Census Bureau; NCDOT; SCDOT; GSATS; NC DEQ; Horry County; Brunswick County; USGS; NC OneMap; CALYX Engineers and Consultants. Map Date: 10/17/2017

FIGURE 4. Community Context Mapbook Index

Legend

-  Mapbook Grid
-  DCIA Boundary
-  County Boundary
-  Municipal Boundary
-  Census Designated Place
-  State or Local Park
-  Conservation Easement
-  Agriculture
-  Timber Agriculture
-  Golf Course
-  Residential Subdivision
-  Proposed Development
-  Business/Economic
-  Private Rec / Tourism
-  Government Owned (Local)

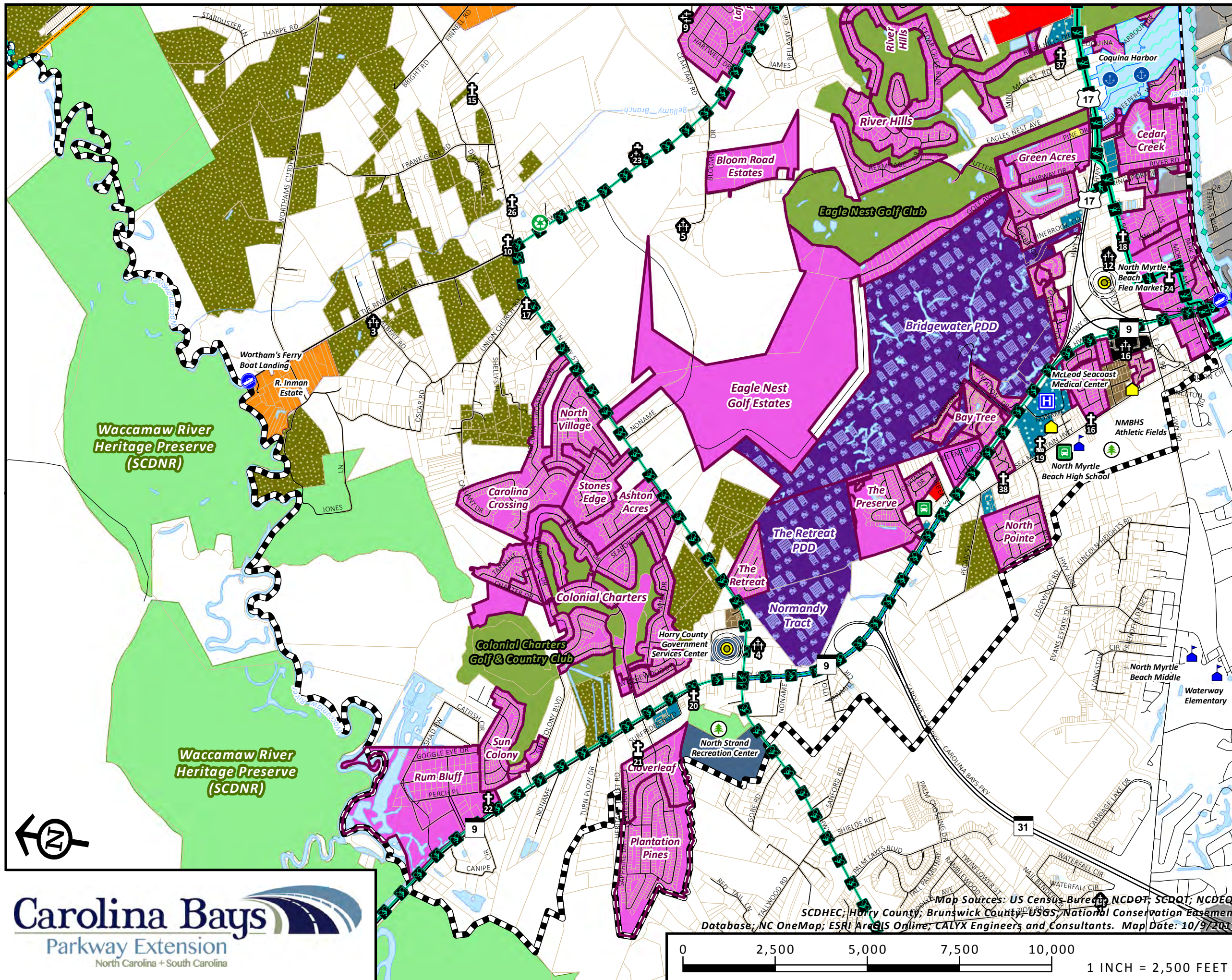
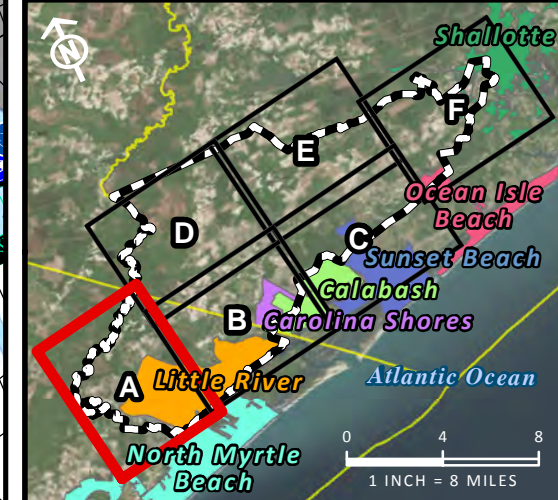


Carolina Bays Parkway Extension

NCDOT Project 44604
SCDOT Project P029554

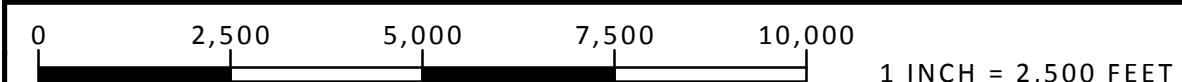
From SC 9 in Horry County, SC to US 17 Shallotte Bypass in Brunswick County, NC

FIGURE 4A. Community Context Map



Legend

- | | |
|---------------------------|----------------------------|
| DCIA Boundary | Boat Ramp |
| Parcel Lines | EMS |
| County Boundaries | Civic |
| Municipal Boundaries | Recycling Center |
| East Coast Greenway Route | Marina |
| SC Bike Touring Route | Business/Economic |
| Proposed Multi-Use Trail | Childcare Facility |
| Paddle Trail | Post Office |
| Cemetery | Evacuation Route Bus Stop |
| Church | Fire Station |
| Farm | Police Station |
| STIP Project | Other |
| State or Local Park | Medical/Professional |
| Conservation Easement | Commercial |
| Known EJ Community | Government Owned (Local) |
| Golf Course | Manufacturing & Industrial |
| Agriculture | Business/Economic |
| Timber Agriculture | Known Estate |
| Subdivision | Other |
| Private Rec / Tourism | |
- Future Development**
- Mixed Use / PDD
 - Residential Subdivision
 - Other

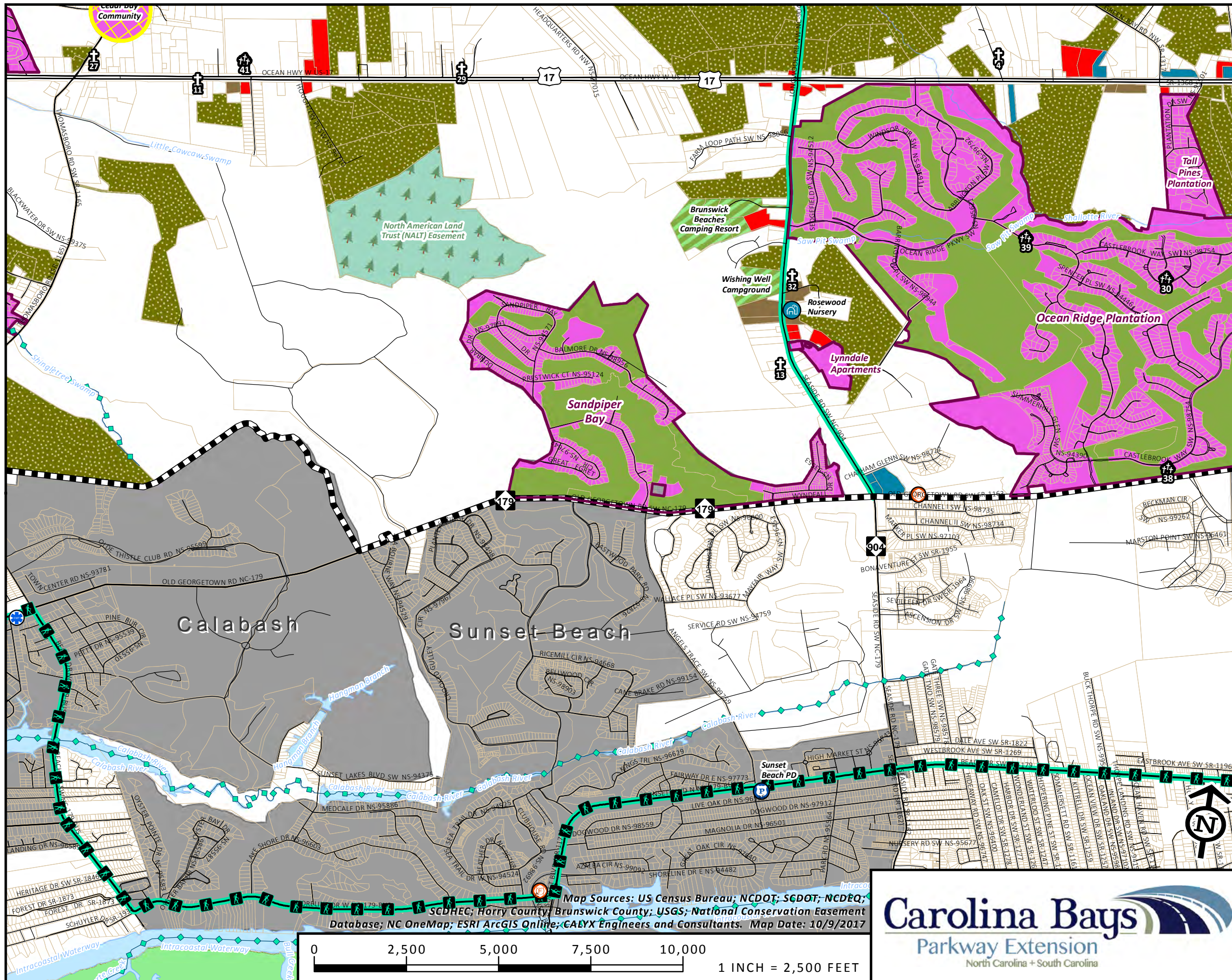
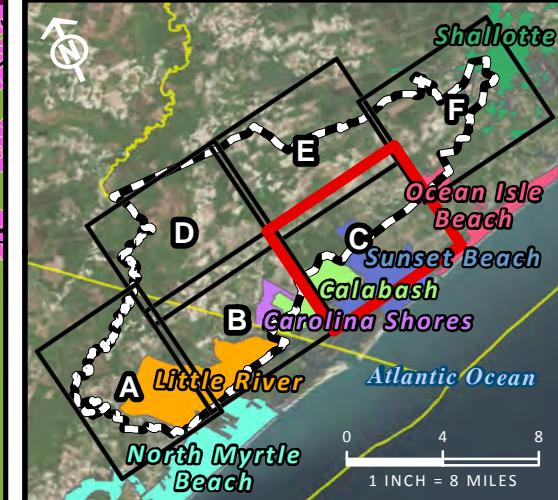


Carolina Bays Parkway Extension

NCDOT Project 44604
SCDOT Project P029554

From SC 9 in Horry County, SC
to US 17 Shallotte Bypass
in Brunswick County, NC

FIGURE 4C.
Community Context Map



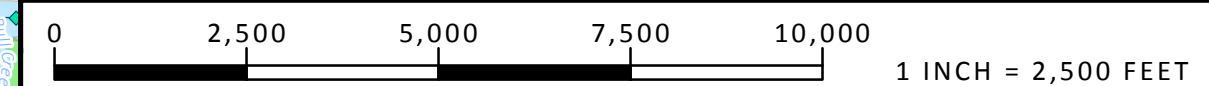
Legend

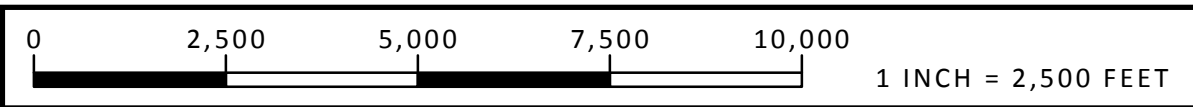
- | | |
|---------------------------|----------------------------|
| DCIA Boundary | Boat Ramp |
| Parcel Lines | EMS |
| County Boundaries | Civic |
| Municipal Boundaries | Recycling Center |
| East Coast Greenway Route | Marina |
| SC Bike Touring Route | Business/Economic |
| Proposed Multi-Use Trail | Childcare Facility |
| Paddle Trail | Post Office |
| Cemetery | Evacuation Route Bus Stop |
| Church | Fire Station |
| Farm | Police Station |
| STIP Project | Other |
| State or Local Park | Medical/Professional |
| Conservation Easement | Commercial |
| Known EJ Community | Government Owned (Local) |
| Golf Course | Manufacturing & Industrial |
| Agriculture | Business/Economic |
| Timber Agriculture | Known Estate |
| Subdivision | Other |
| Private Rec/ Tourism | |

Future Development

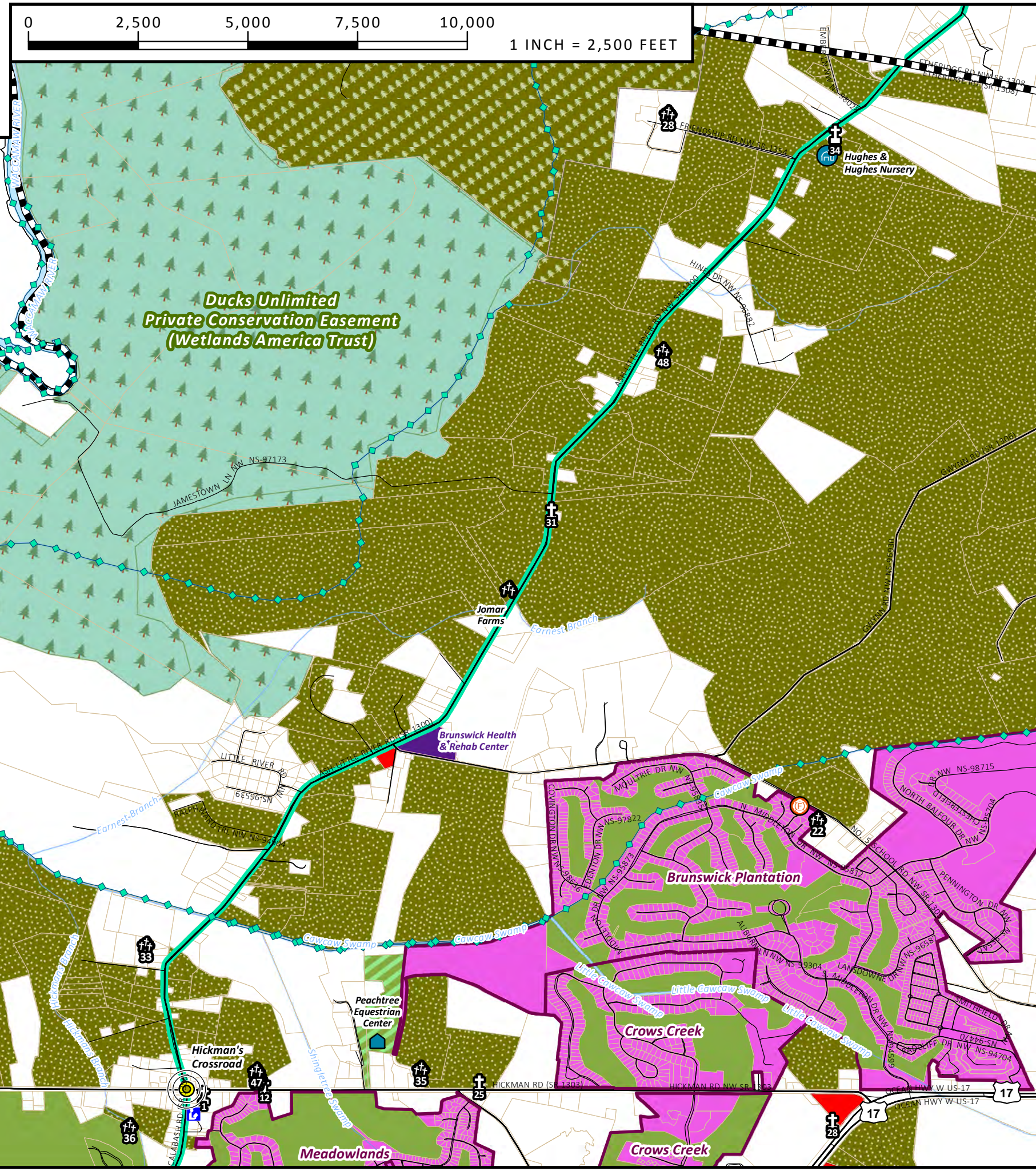
- Mixed Use / PDD
- Residential Subdivision
- Other

Map Sources: US Census Bureau; NCDOT; SCDOT; NCDEQ; SCDHEC; Horry County; Brunswick County; USGS; National Conservation Easement Database; NC OneMap; ESRI ArcGIS Online; CALYX Engineers and Consultants. Map Date: 10/9/2017





Map Sources: US Census Bureau; NCDOT; SCDOT; NCDEQ; SCDHEC; Horry County; Brunswick County; USGS; National Conservation Easement Database; NC OneMap; ESRI ArcGIS Online; CALYX Engineers and Consultants. Map Date: 10/9/2017

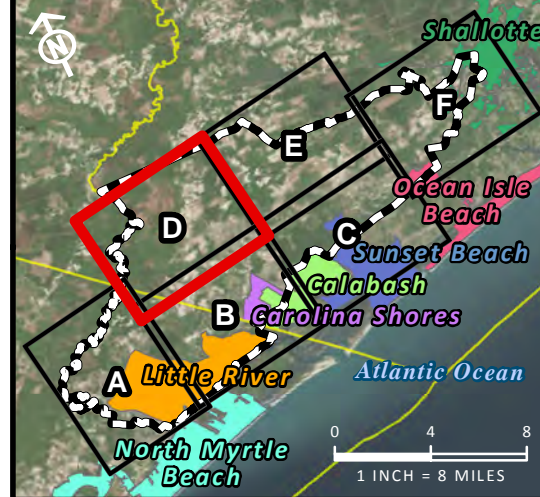


Carolina Bays Parkway Extension

NCDOT Project 44604
SCDOT Project P029554

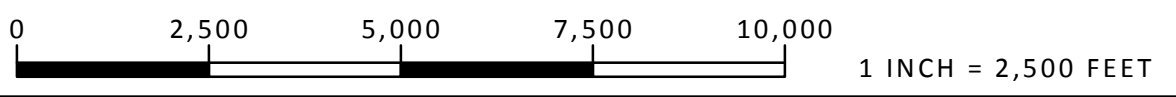
From SC 9 in Horry County, SC to US 17 Shallotte Bypass in Brunswick County, NC

FIGURE 4D. Community Context Map



Legend

DCIA Boundary	Boat Ramp
Parcel Lines	EMS
County Boundaries	Civic
Municipal Boundaries	Recycling Center
East Coast Greenway Route	Marina
SC Bike Touring Route	Business/Economic
Proposed Multi-Use Trail	Childcare Facility
Paddle Trail	Post Office
Cemetery	Evacuation Route Bus Stop
Church	Fire Station
Farm	Police Station
STIP Project	Other
State or Local Park	Medical/Professional
Conservation Easement	Commercial
Known EJ Community	Government Owned (Local)
Golf Course	Manufacturing & Industrial
Agriculture	Business/Economic
Timber Agriculture	Known Estate
Subdivision	Other
Private Rec / Tourism	Future Development
	Mixed Use / PDD
	Residential Subdivision
	Other



Carolina Bays Parkway Extension

North Carolina + South Carolina

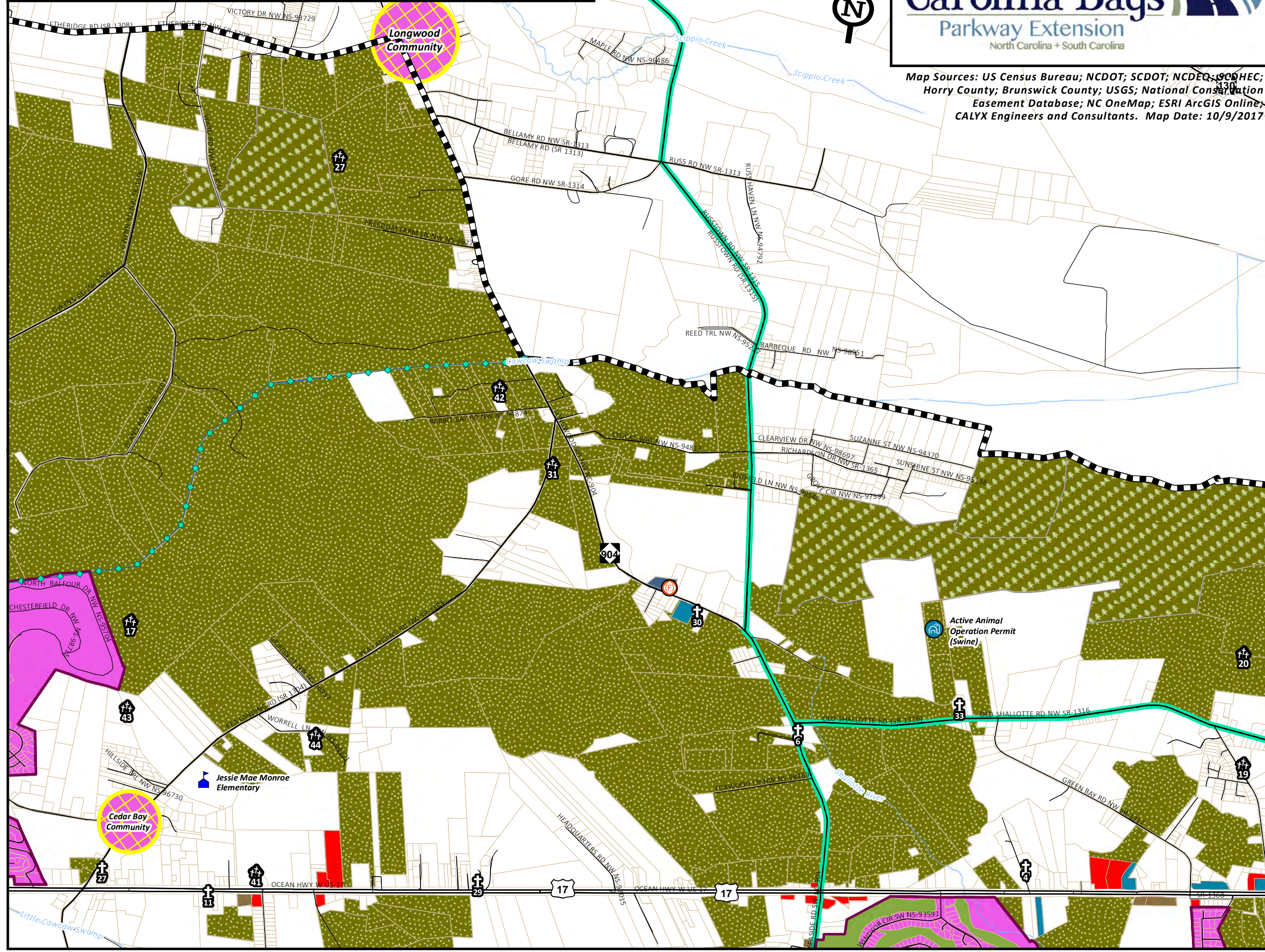
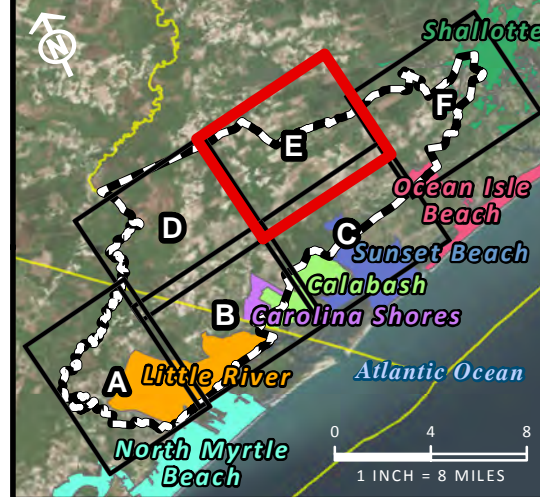
Map Sources: US Census Bureau; NCDOT; SCDOT; NCDEQ; SCDHEC; Horry County; Brunswick County; USGS; National Conservation Easement Database; NC OneMap; ESRI ArcGIS Online; CALYX Engineers and Consultants. Map Date: 10/9/2017

Carolina Bays Parkway Extension

NCDOT Project 44604
SCDOT Project P029554

From SC 9 in Horry County, SC to US 17 Shallotte Bypass in Brunswick County, NC

FIGURE 4E. Community Context Map

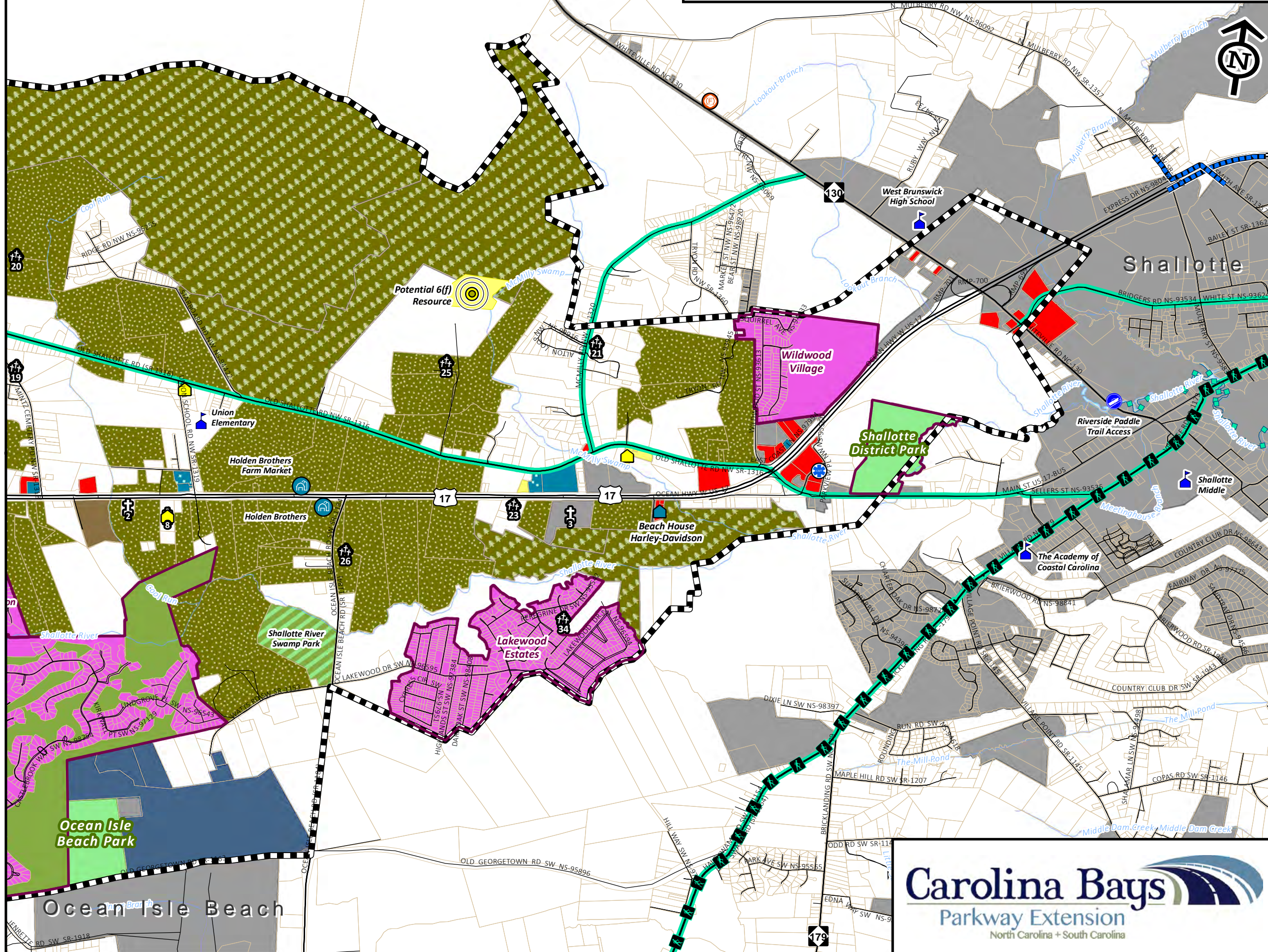


Legend

DCIA Boundary	Boat Ramp
Parcel Lines	EMS
County Boundaries	Civic
Municipal Boundaries	Recycling Center
East Coast Greenway Route	Marina
SC Bike Touring Route	Business/Economic
Proposed Multi-Use Trail	Childcare Facility
Paddle Trail	Post Office
Cemetery	Evacuation Route Bus Stop
Church	Fire Station
Farm	Police Station
STIP Project	Other
State or Local Park	Medical/Professional
Conservation Easement	Commercial
Known EJ Community	Government Owned (Local)
Golf Course	Manufacturing & Industrial
Agriculture	Business/Economic
Timber Agriculture	Known Estate
Subdivision	Other
Private Rec / Tourism	

Future Development

Mixed Use / PDD
Residential Subdivision
Other

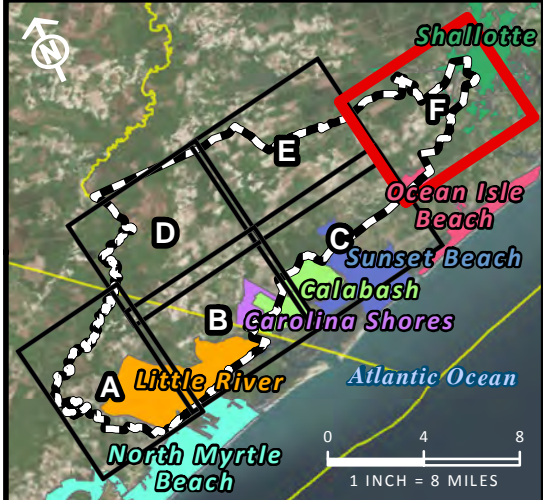


Carolina Bays Parkway Extension

NCDOT Project 44604
SCDOT Project P029554

From SC 9 in Horry County, SC to US 17 Shallotte Bypass in Brunswick County, NC

FIGURE 4F. Community Context Map



Legend

- | | |
|---------------------------|----------------------------|
| DCIA Boundary | Boat Ramp |
| Parcel Lines | EMS |
| County Boundaries | Civic |
| Municipal Boundaries | Recycling Center |
| East Coast Greenway Route | Marina |
| SC Bike Touring Route | Business/Economic |
| Proposed Multi-Use Trail | Childcare Facility |
| Paddle Trail | Post Office |
| Cemetery | Evacuation |
| Church | Route Bus Stop |
| Farm | Fire Station |
| STIP Project | Police Station |
| State or Local Park | Other |
| Conservation Easement | Medical/Professional |
| Known EJ Community | Commercial |
| Golf Course | Government Owned (Local) |
| Agriculture | Manufacturing & Industrial |
| Timber Agriculture | Business/Economic |
| Subdivision | Known Estate |
| Private Rec / Tourism | Other |
| | Future Development |
| | Mixed Use / PDD |
| | Residential Subdivision |
| | Other |