



NORTH CAROLINA
Department of Transportation

Charlotte Passenger Rail Facility

Community Update

Nov. 28, 2023

Connecting people, products and places safely and efficiently with customer focus, accountability and environmental sensitivity to enhance the economy and vitality of North Carolina

Meeting Format

Presentation:

- Jason Orthner, Rail Division Director - General background and project context
- Ron Lucas, Rail Division Planning and Project Development Branch Manager – Project specific history, planning, and next steps

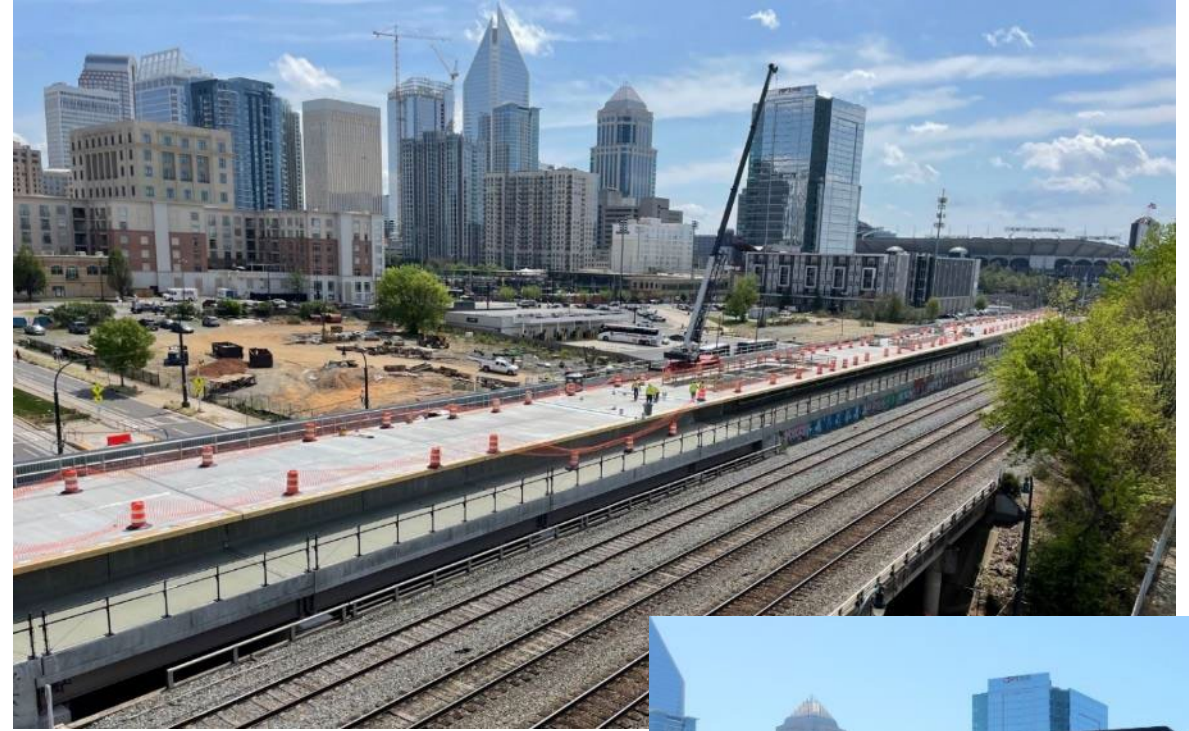
Question and Answer



Charlotte Gateway Station / Charlotte Passenger Rail Facility Connection

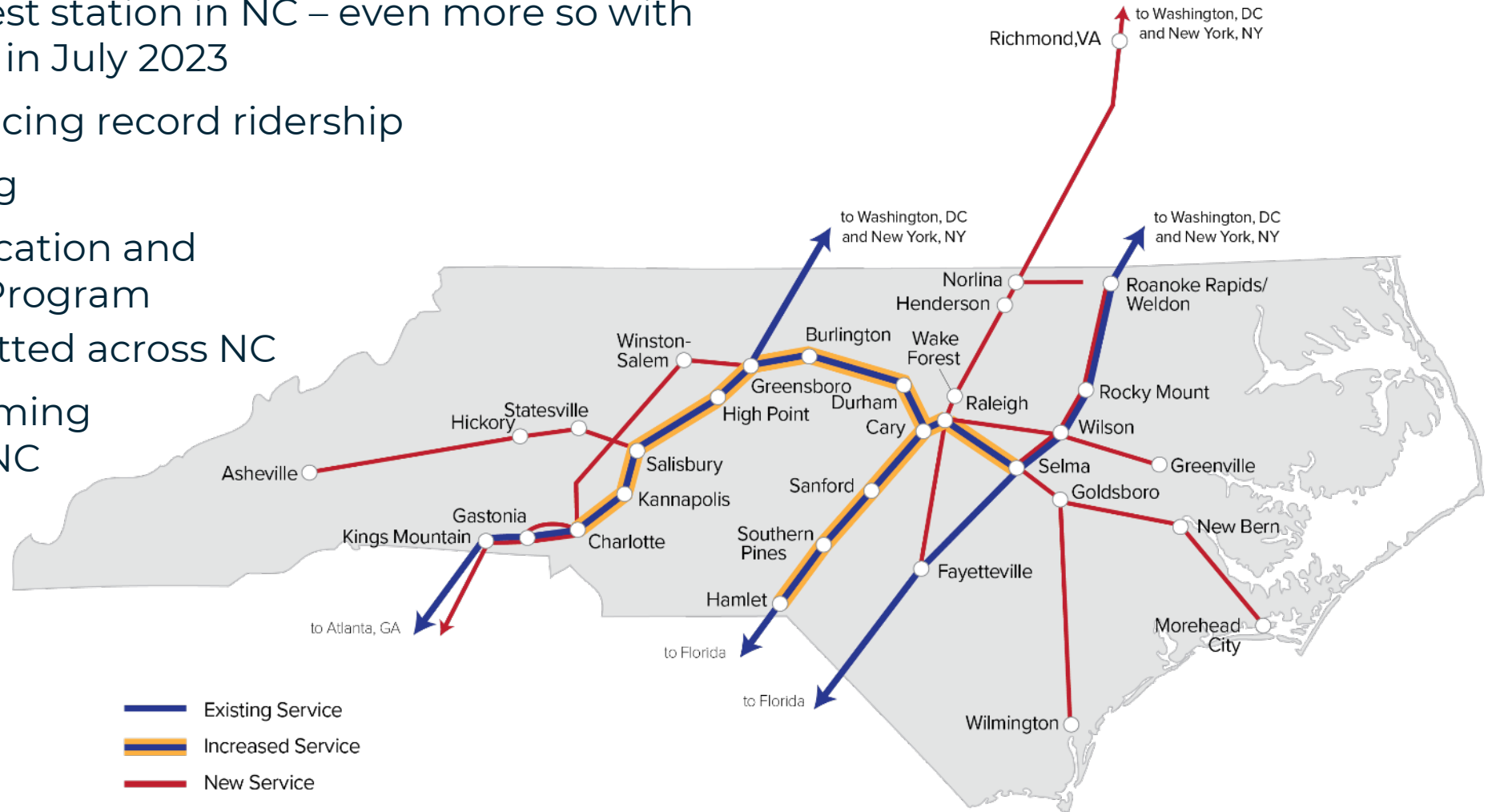
CGS and CPRF were developed together

- The projects will fulfill the vision of bringing passenger rail service to Uptown, accommodate customer growth and support economic growth while servicing modern, efficient rail equipment.
- NCDOT and the City have partnered since the early 2000s on concept, design and incremental implementation of the projects.
- Coordination and agreements with Norfolk Southern Railway required direct access between CGS and CPRF without conflicting with NS freight operations.



More Services and Corridors are Coming

- Charlotte is the busiest station in NC – even more so with 5th frequency launch in July 2023
- NC By Train experiencing record ridership
- More services coming
- FRA Corridor Identification and Development (CID) Program
 - 12 Corridors submitted across NC
- New connections coming for Charlotte across NC and the Southeast



Towns shown are for geographical reference only and do not represent station locations.

New Train Equipment is Coming

- Amtrak Airo fleet – a new era of modern train service
- Enhanced customer experience with focus on safety, comfort, reliability and environmental sustainability
- New dual-mode train sets produce 90% less emissions
- Charlotte Passenger Rail Facility ensures these trains are ready to go for serving Charlotte



Amtrak Airo Trainset

Charlotte Passenger Rail Facility

- Facility identified as a need in the 2000s for Charlotte region to become a major passenger rail hub in NC and on the east coast
- Site selected by NCDOT and the City as a critical connection with CGS for proximity, ability to build infrastructure to bypass freight tracks for operations and opportunity for future growth
- Coordination occurred between early 2000s and 2018 resulting in construction, operating, and property agreements with the freight railroad
- CPRF was included as standalone project in the state's 10-year transportation plan in 2011
- Over 80 public and stakeholder meetings held in site selection and planning process for CPRF, and NEPA planning process was completed in 2014
- Federal funds used to acquire site from Charlotte Pipe and Foundry in 2015

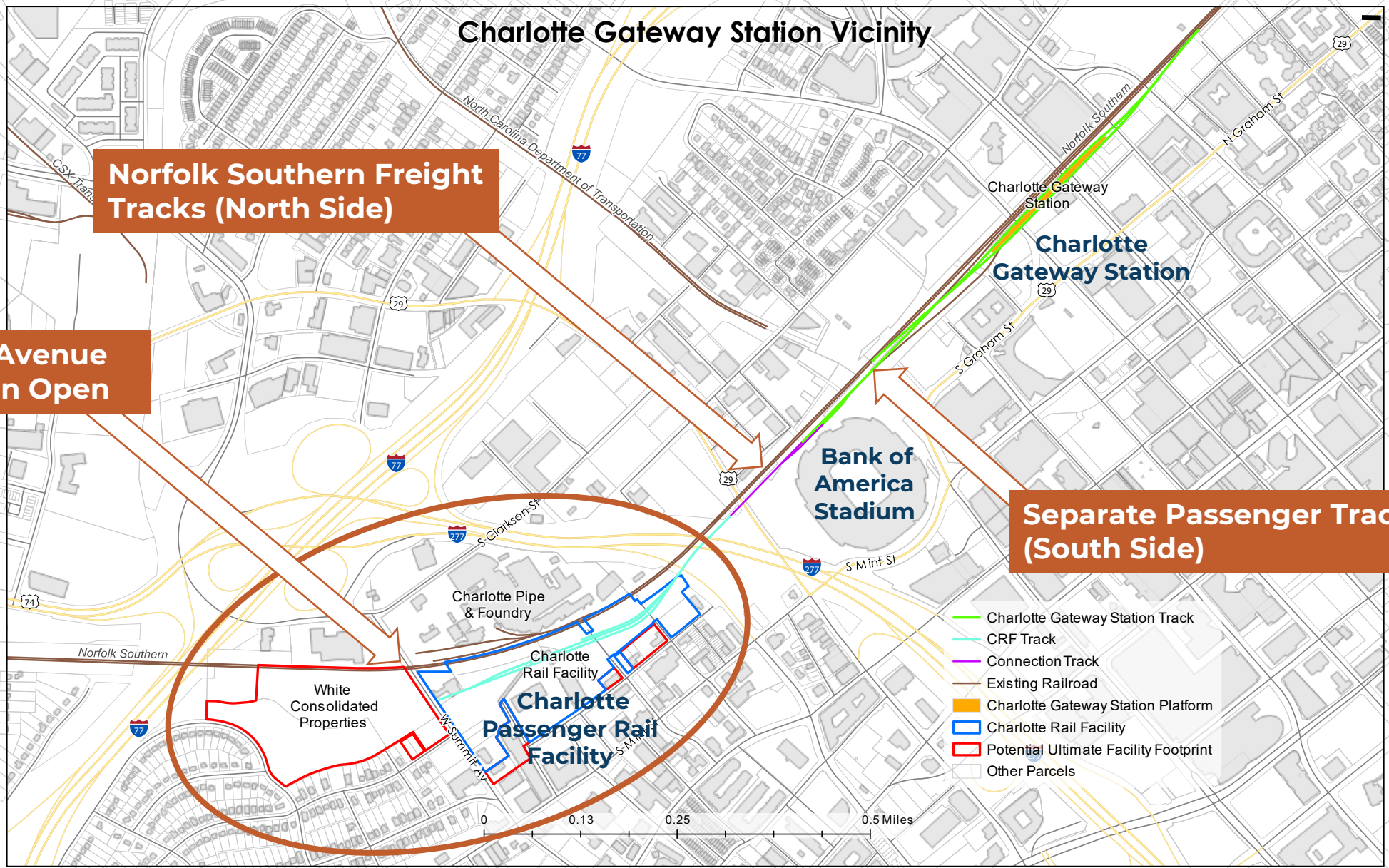


Charlotte Gateway Station Vicinity

Norfolk Southern Freight Tracks (North Side)

Summit Avenue to Remain Open

Separate Passenger Tracks (South Side)



- Charlotte Gateway Station Track
- CRF Track
- Connection Track
- Existing Railroad
- Charlotte Gateway Station Platform
- Charlotte Rail Facility
- Potential Ultimate Facility Footprint
- Other Parcels

Facility Location and Funding

Facility location
adjoined with Charlotte
Gateway Station

Location result of extensive
coordination with
stakeholders, site
evaluation, and agreements
with railroads

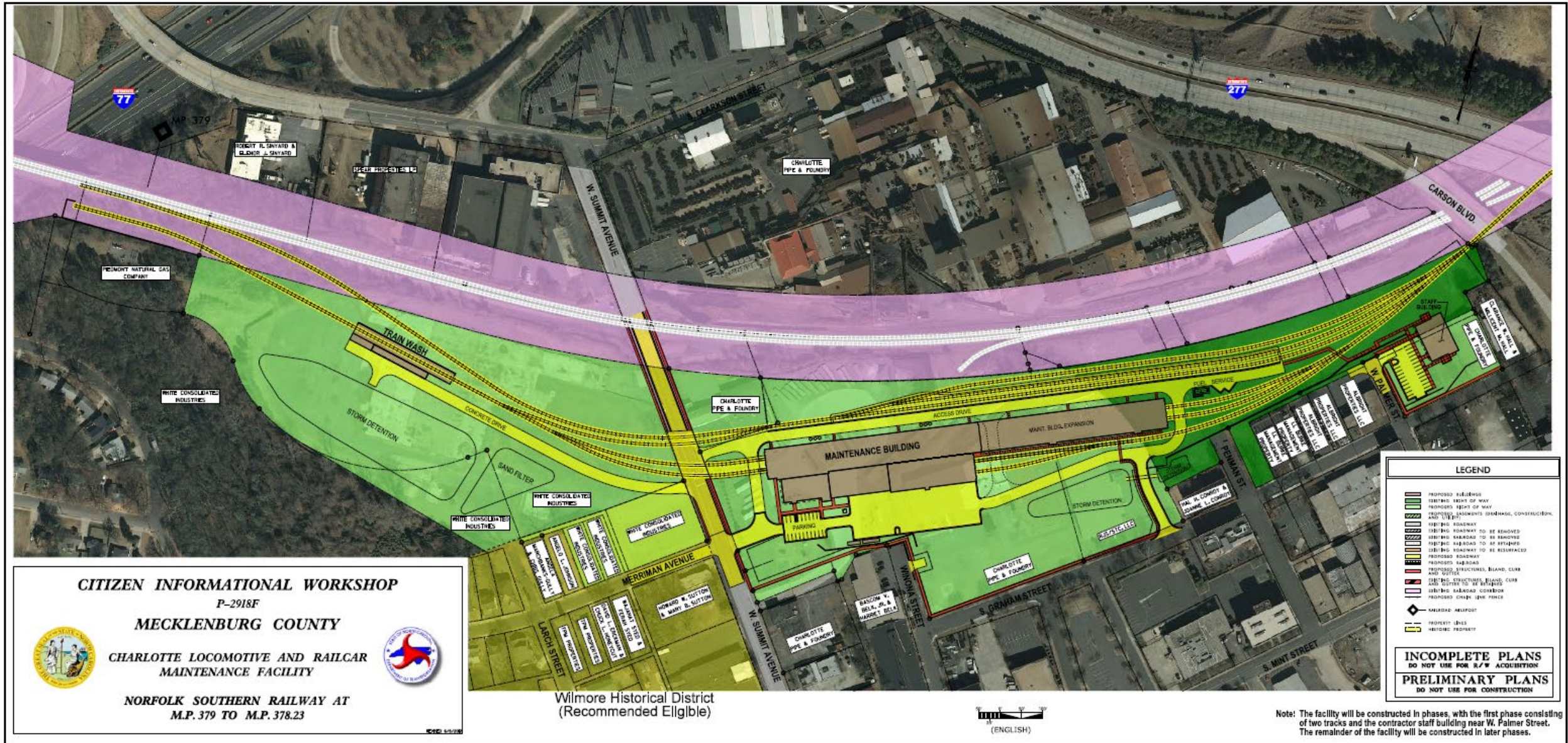
\$52M federal funds invested
in existing facility

Considerations negating other locations for facility:



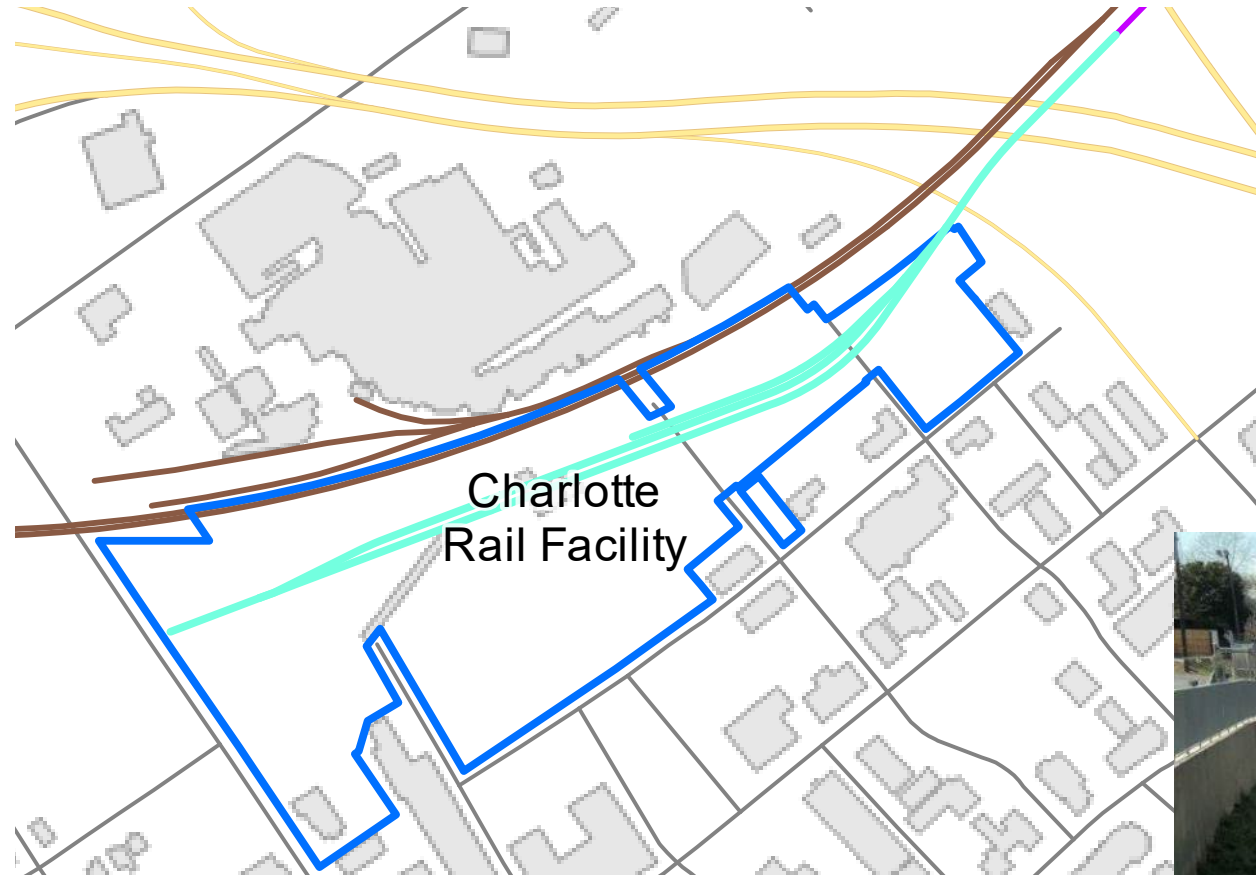
- Significant freight railroad operating and agreement complications
- Would require replacement of federal investment
- At least 10+ years to replace function
- Additional estimated \$100M in railroad infrastructure to access another location, and increased operational costs
- Limited site availability

Original NEPA Hearing Map (December 2013) - Meeting to allow the public to review the design, copies of the Environmental Document, and to formally comment on the project.



Phase I – Completed 2018

\$52M federal funds under the Piedmont Improvement Program (PIP) were used for design, property and construction of Phase I



- Initial phase included property, tracks, building and supporting infrastructure for initial passenger train servicing
- Construction of CGS Phase 1 between 2018 and 2022 temporarily disconnected the facility tracks from CGS and the mainline
- Tracks now reconnected to allow next phase without further coordination with Norfolk Southern
- Passenger trains will flow freely between CGS and CPRF without accessing freight tracks



Phase II – Under Development

Updated Facility for New Trains

- Clean, high-tech, modern facility
- Building and track layout to allow for modern, fixed trainsets to efficiently process through facility
- Supports additional rail services to/from Charlotte Gateway Station
- NCDOT is early in development phase and no decisions on what property, if any, needed for possible expansion
- NCDOT is committed to evaluating and developing practical measures to avoid and minimize impacts to people, the environment and businesses as we determine the best path forward
- Targeted completion in 2028



Actions and Next Steps

Public Engagement and Development Process

- Public input and stakeholder involvement continue to be vital to decision-making about project as we explore needs at this location and potential alternatives
- Planning and conducting public engagement efforts to hear concerns, identify issues and challenges and provide updates of ongoing efforts
- Estimated Timeline:
 - 2023-2024, NEPA Consultation and Stakeholder Coordination
 - 2023-2025, Facility Design
 - 2024-2026, Property Acquisition, if necessary
 - 2026-2028, Construction

Contacts:

Project Contact: Ron Lucas, PE

NCDOT Rail Division

Planning and Project Development, Branch Manager

Office (919) 707-4713

rglucas@ncdot.gov

Communications Contact: Liz Macam

NCDOT Communication Division

Public Information Officer, Rail and IMD

(336) 341-0931 Mobile

epmacam@ncdot.gov

Comments:

Please provide comments, sign up for project mailing list and find additional resources at Public Input.

<https://publicinput.com/charlotte-passenger-rail>

QUESTIONS?

