



Charlotte Passenger Rail Facility

Charlotte, North Carolina

March 25, 2024
Mecklenburg County

State Transportation Improvement Program Project No. P-2918F

PUBLIC MEETING

Welcome to the Public Meeting. This meeting is being held to share information about the proposed Charlotte passenger rail facility in Charlotte, North Carolina. Public involvement is an important part of the planning process, and the N.C. Department of Transportation encourages your participation and feedback. NCDOT project team members are here to assist you as you review the preliminary design maps, ask questions, or offer comments.

Your input matters!

Your comments, questions, and concerns help guide the project team by alerting us to local issues. A comment form is attached to this handout. By filling out the form, your comments become part of the project record. You may fill it in and leave it here or take it home and mail or email it to us later. Please provide your comments by **April 25, 2024**.

PROJECT OVERVIEW

The NCDOT proposes to construct a Charlotte passenger railcar facility (CPRF) southwest of Uptown Charlotte to support the growth of intercity passenger rail and the new Charlotte Gateway Station, in Uptown Charlotte. Together, these projects will accommodate customer growth, supporting the Queen City as an important destination for travelers in the region and servicing modern, efficient passenger train sets of the future.

The new facility will include storage tracks, an enclosed maintenance facility, an onsite fuel tank and fuel pad, an enclosed train wash facility, and a train crew base.

The CPRF will connect directly to the Charlotte Gateway Station passenger platforms allowing for efficient operations between the two facilities. Trains will then connect to the existing Norfolk Southern Mainline tracks via existing connections at Charlotte Gateway Station.

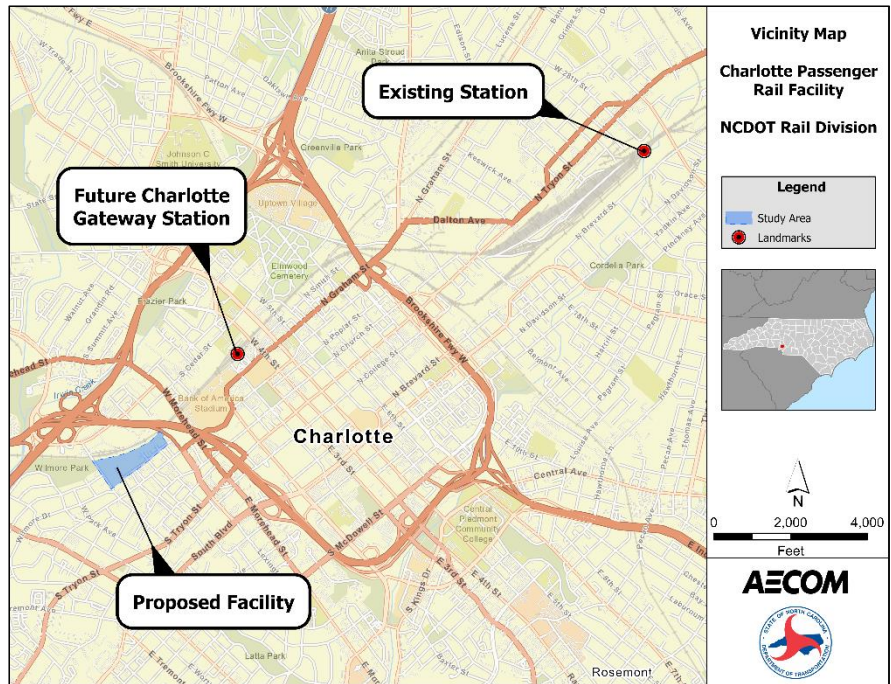


Figure 1: Project location in proximity to future Charlotte Gateway Station

Estimated Project Schedule*

Fall 2024	Environmental Documentation Completed
Late 2024	Property Acquisition (easements) and Utilities Relocation, as necessary
2025	Construction

*All dates are current estimated timelines and are subject to change.



Charlotte Passenger Rail Facility

Charlotte, North Carolina

March 25, 2024
Mecklenburg County

State Transportation Improvement Program Project No. P-2918F

Project Study Area

The project study area is bound by the Norfolk Southern railway, West Carson Blvd, South Graham St, and the lot bound by I-77 and West Summit Ave. The project footprint (shown in yellow below) has been reduced since completion of the initial environmental documentation in 2014, to minimize the projects impact on surrounding communities.

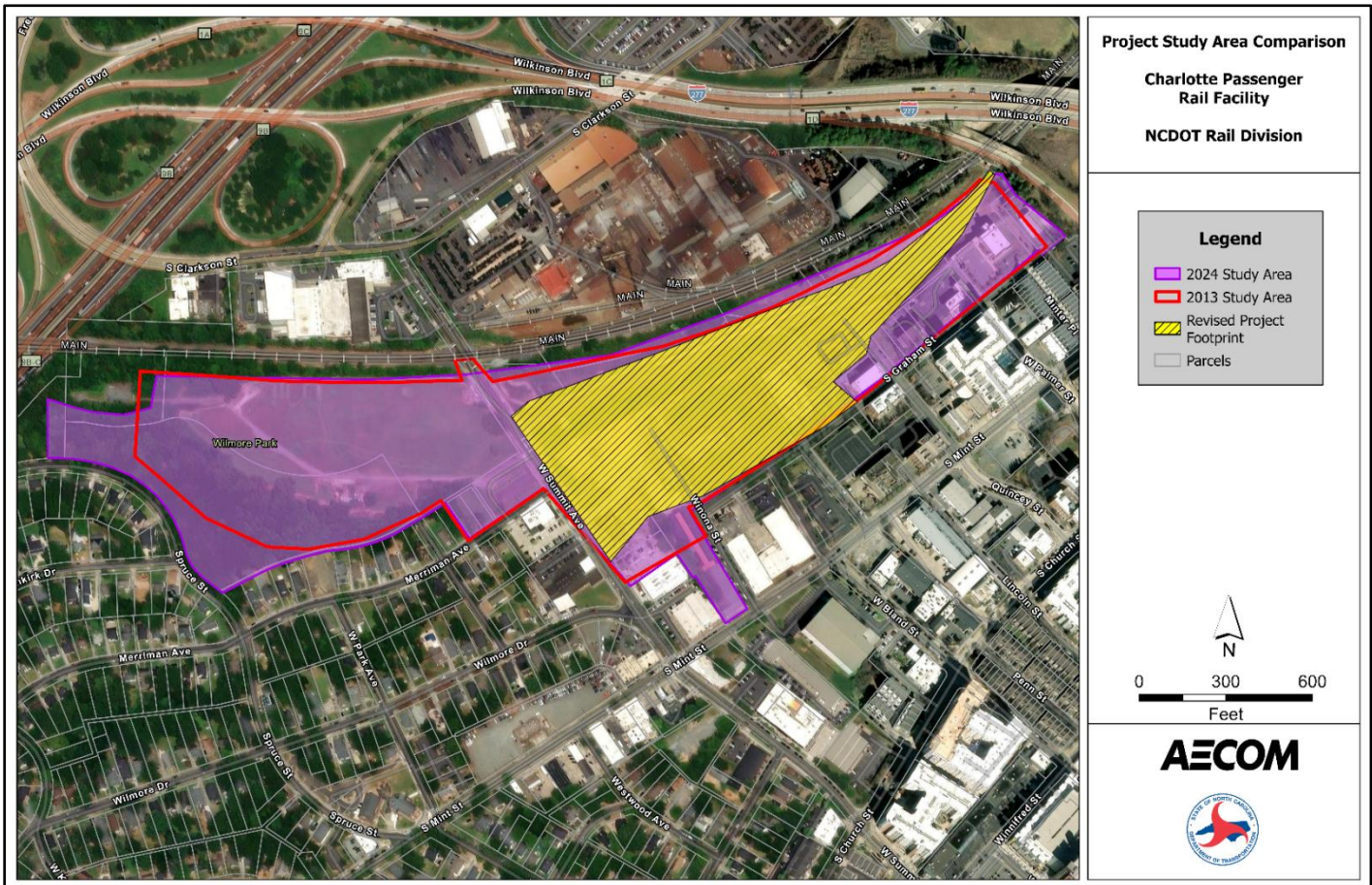
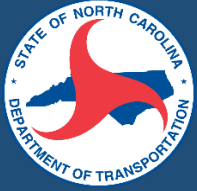


Figure 2: Project location highlighting reduction of the project footprint from initial concept.



Charlotte Passenger Rail Facility

Charlotte, North Carolina

March 25, 2024
Mecklenburg County

State Transportation Improvement Program Project No. P-2918F

What happens if my property is impacted?

No significant property acquisition is anticipated for the proposed project. NCDOT may need to purchase some easements to allow for construction of certain aspects of the project, such as retaining walls, fencing, drainage, utilities, and vegetative buffers, but these impacts are not expected to result in any business or residential relocations. After decisions are made regarding the final design, if your property is impacted by these easements, a Right-of-Way Agent will contact you to arrange a meeting. The agent will explain the plans, advise you as to how your property will be affected, and inform you of your rights as a property owner.

Additional information will be available as the project moves towards final design. A Right-of-Way Agent from NCDOT is present at today's meeting to answer any questions you may have. For more information about the right of way process, visit <https://www.ncdot.gov/PROJECTS/DOCUMENTS/NCDOT-ACQUISITION-RIGHT-OF-WAY-BOOKLET-ENGLISH.PDF>.

The Charlotte passenger rail facility is an integral part of facilitating the modernization and upgrade of passenger rail services in North Carolina. The facility will provide the needed infrastructure to accommodate the launch of the new Amtrak Airo fleet train sets. Launch of the new Amtrak Airo fleet will enhance the customer experience by introducing new trains with a focus on safety, passenger comfort, reliability, and environmental sustainability. The Amtrak Airo fleet is more fuel efficient and produces 90% less particulate emissions in diesel operations than current fleets. The new Amtrak Airo fleet is also made in America and complies with the Federal Railroad Administration Buy America Standards.



Figure 3: Amtrak Airo Fleet

Project Development Process

Since completion of the initial project environmental documentation in 2014, an informational workshop was held for area residents at the Wilmore Community Center on May 16, 2016. Attendees were able to ask questions regarding the project to attending NCDOT and design team members. Each question and concern about project impacts on the Wilmore neighborhood received a response from NCDOT and Charlotte Department of Transportation (CDOT).

In late 2023, NCDOT held several small group meetings with various communities and stakeholders to identify project concerns. The project design has been adjusted based on the public input received and assessment of facility needs. Engagement and communication continue to be top priority for NCDOT as public outreach for this project continues.



Charlotte Passenger Rail Facility

Charlotte, North Carolina

State Transportation Improvement Program Project No. P-2918F

March 25, 2024
Mecklenburg County

Current Project Cost Estimate*

Project Development and Design	\$30 Million
Property Acquisition	TBD
Construction Costs	\$270 Million
Total	\$300 Million

*Costs are subject to change and will be updated as more detailed designs are completed.

What's Next?

After the comment period ends on April 25, 2024, all comments will be reviewed and discussed by the project team. Potential changes to the design, based on public comment, will be documented. Comments will be used to help guide the design process as the project moves into the architectural design process.



Comments should be submitted by
April 25, 2024

Contact Us



Charlotte-railcar@publicinput.com



512-580-8850 (project code 6193)



<https://ncdot.gov/projects/charlotte-passenger-rail-facility>

TITLE VI PUBLIC INVOLVEMENT FORM

Completing this form is completely voluntary. You are not required to provide the information requested in order to participate in this meeting.

Meeting Type: Open House Public Meeting Location: Pritchard at South End Church 1117 South Boulevard, Charlotte, NC 28203	Date: 2024-03-25
TIP No: P-2918F Project Description: Charlotte Passenger Rail Facility in Mecklenburg County	

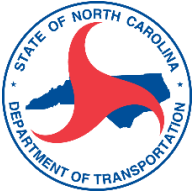
In accordance with Title VI of the Civil Rights Act of 1964 and related authorities, the N.C. Department of Transportation assures that no person(s) shall be excluded from participation in, denied the benefits of, or subjected to discrimination under any of the Department’s programs, policies, or activities, based on their race, color, national origin, disability, age, income, or gender.

Completing this form helps meet our data collection and public involvement obligations under Title VI and NEPA, and will improve how we serve the public. Please place the completed form in the designated box on the sign-in table, hand it to an NCDOT official or mail it to the Environmental Analysis Unit, 1598 Mail Service Center, Raleigh, NC 27699-1598.
All forms will remain on file at the NCDOT as part of the public record.

Zip Code: _____ Street Name: (i.e. Main Street) _____	Gender: Male Female
Total Household Income: <input type="radio"/> Less than \$12,000 <input type="radio"/> \$47,000 – \$69,999 <input type="radio"/> \$12,000 – \$19,999 <input type="radio"/> \$70,000 – \$93,999 <input type="radio"/> \$20,000 – \$30,999 <input type="radio"/> \$94,000 – \$117,999 <input type="radio"/> \$31,000 – \$46,999 <input type="radio"/> \$118,000 or greater	Age: <input type="radio"/> Less than 18 <input type="radio"/> 45-64 <input type="radio"/> 18-29 <input type="radio"/> 65 and older <input type="radio"/> 30-44
Race/Ethnicity: <input type="radio"/> White <input type="radio"/> Black/African American <input type="radio"/> Asian <input type="radio"/> American Indian/Alaskan Native <input type="radio"/> Native Hawaiian/Pacific Islander <input type="radio"/> Hispanic/Latino <input type="radio"/> Other (please specify): _____	Have a Disability: Yes No
	National Origin: (if born outside the U.S.) <input type="radio"/> Mexican/ Central American: _____ <input type="radio"/> South American: _____ <input type="radio"/> European: _____ <input type="radio"/> Chinese <input type="radio"/> Vietnamese <input type="radio"/> Korean <input type="radio"/> Other (please specify): _____

How did you hear about this meeting? (newspaper advertisement, flyer, and/or mailing)

For more information regarding Title VI or this request, please contact the NCDOT Title VI Nondiscrimination Program at (919) 508-1808 or toll free at 1-800-522-0453, or by email at titleVI@ncdot.gov. Thank you for your participation!



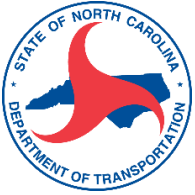
**P-2918F – Charlotte Passenger Rail Facility
NCDOT Environmental Analysis Unit
Attn: Tony Gallagher
1598 Mail Service Center
Raleigh, NC 27699-1598**

PLACE
STAMP
HERE

**NCDOT Environmental Analysis Unit
Attn: Tony Gallagher
1598 Mail Service Center
Raleigh, NC 27699-1598**



Fold for mailing



**P-2918F – Charlotte Passenger Rail Facility
NCDOT Environmental Analysis Unit
Attn: Tony Gallagher
1598 Mail Service Center
Raleigh, NC 27699-1598**

PLACE
STAMP
HERE

**NCDOT Environmental Analysis Unit
Attn: Tony Gallagher
1598 Mail Service Center
Raleigh, NC 27699-1598**

Fold for mailing