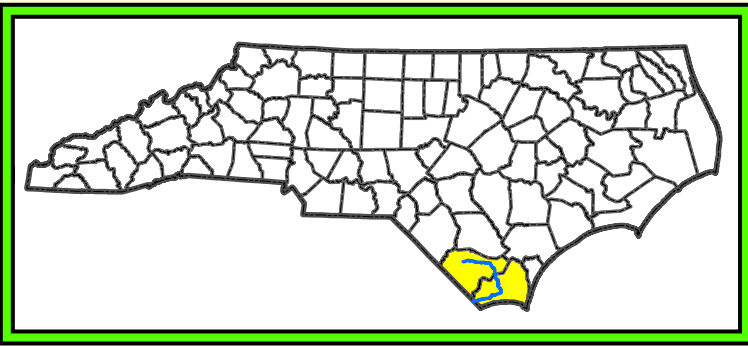
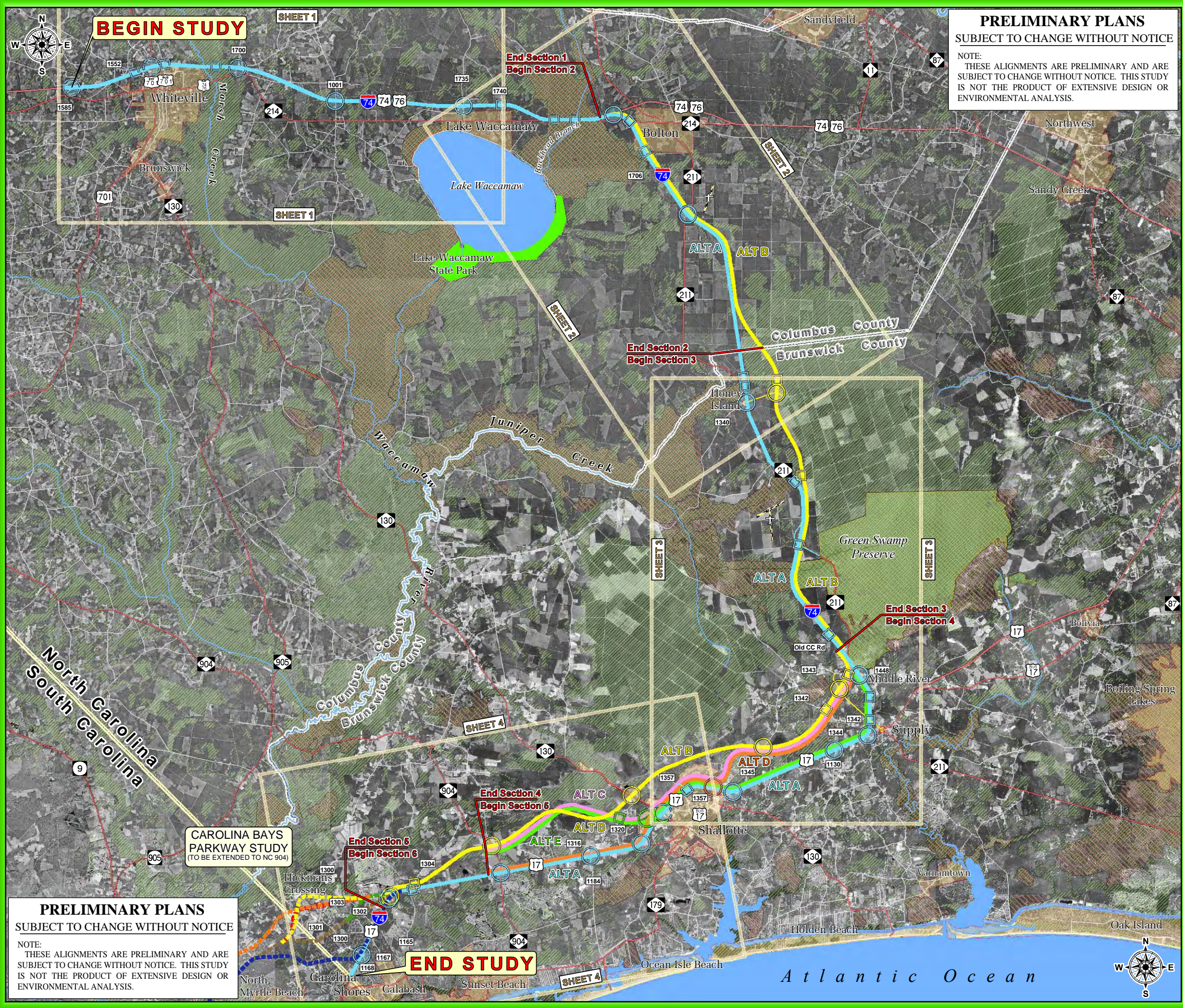


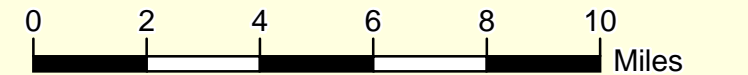
VIII. Figures

Project Study Map
Sheets 1 to 4 – Study Alternatives Maps



LEGEND

- | | |
|---|----------------------|
| PROPOSED ALTERNATIVES | MUNICIPAL BOUNDARY |
| CAROLINA BAYS PARKWAY STUDY | WATER FEATURES |
| EXISTING GRADE SEPARATION (OVER ROADWAY OR WATER) | NWI WETLANDS |
| PROPOSED GRADE SEPARATION | NATURAL AREAS |
| EXISTING INTERCHANGE | GREEN SWAMP PRESERVE |
| PROPOSED INTERCHANGE | STATE PARKS |
| PRIVATE AIRFIELD | COUNTY BOUNDARY |
| HIGHWAYS | STATE BOUNDARY |
| RIVERS AND STREAMS | |

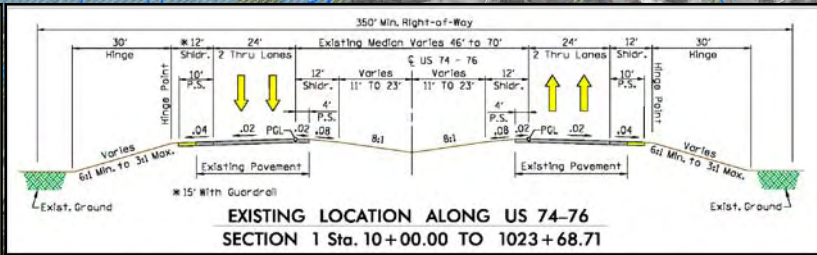
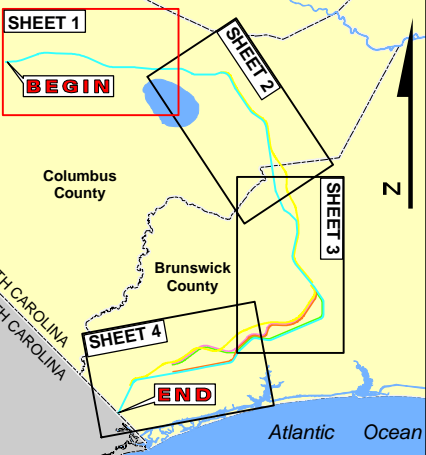
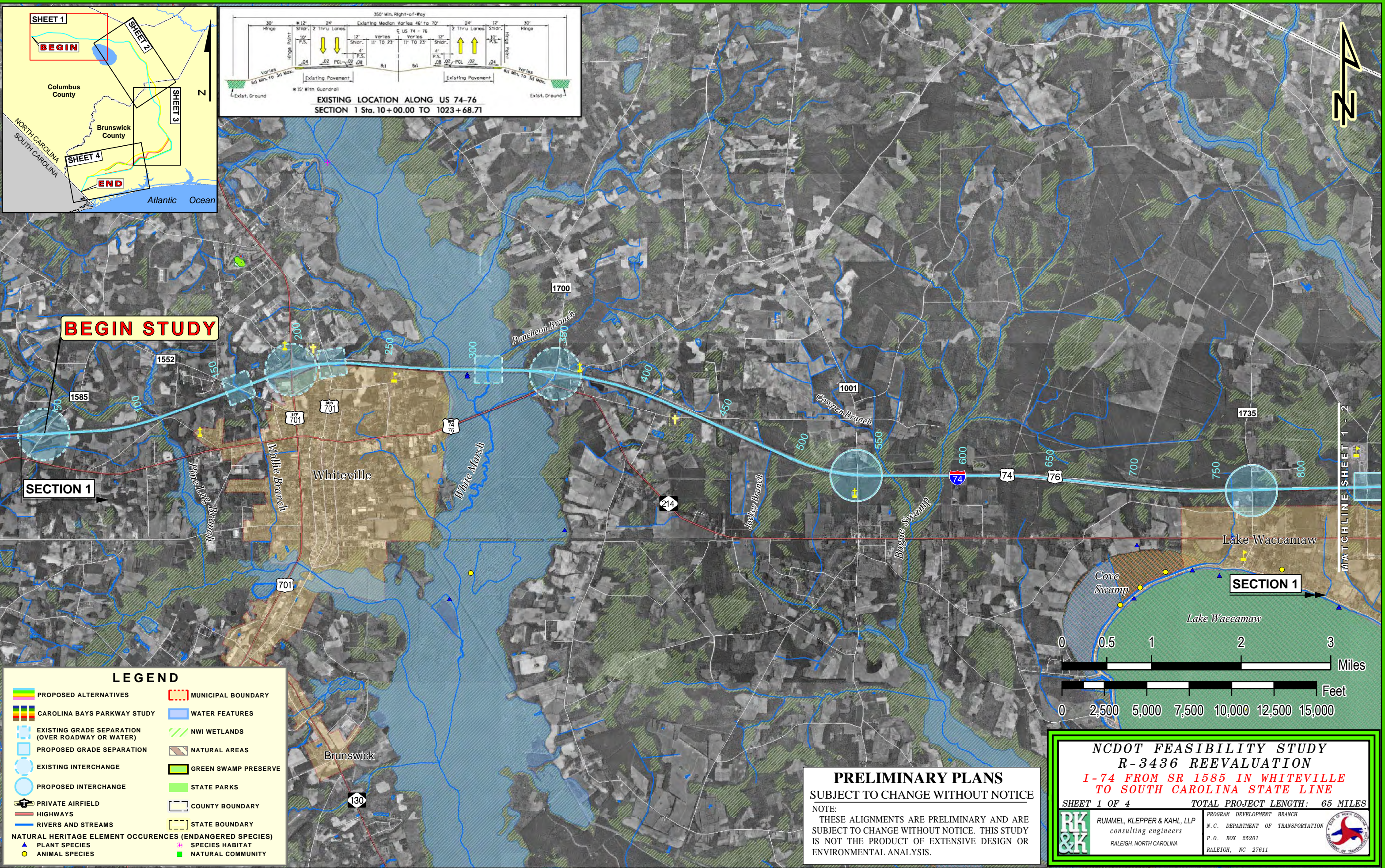


NCDOT FEASIBILITY STUDY
R-3436 REEVALUATION
I-74 FROM SR 1585 IN WHITEVILLE TO SOUTH CAROLINA STATE LINE

PROJECT STUDY MAP **TOTAL PROJECT LENGTH: 65 MILES**

RK & K RUMMEL, KLEPPER & KAHL, LLP
consulting engineers
RALEIGH, NORTH CAROLINA

PROGRAM DEVELOPMENT BRANCH
N.C. DEPARTMENT OF TRANSPORTATION
P.O. BOX 25201
RALEIGH, NC 27611



BEGIN STUDY

SECTION 1

SECTION 1

MATCHLINE SHEET 1 2

LEGEND

	PROPOSED ALTERNATIVES		MUNICIPAL BOUNDARY
	CAROLINA BAYS PARKWAY STUDY		WATER FEATURES
	EXISTING GRADE SEPARATION (OVER ROADWAY OR WATER)		NWI WETLANDS
	PROPOSED GRADE SEPARATION		NATURAL AREAS
	EXISTING INTERCHANGE		GREEN SWAMP PRESERVE
	PROPOSED INTERCHANGE		STATE PARKS
	PRIVATE AIRFIELD		COUNTY BOUNDARY
	HIGHWAYS		STATE BOUNDARY
	RIVERS AND STREAMS		NATURAL HERITAGE ELEMENT OCCURRENCES (ENDANGERED SPECIES)
	PLANT SPECIES		SPECIES HABITAT
	ANIMAL SPECIES		NATURAL COMMUNITY

PRELIMINARY PLANS
SUBJECT TO CHANGE WITHOUT NOTICE

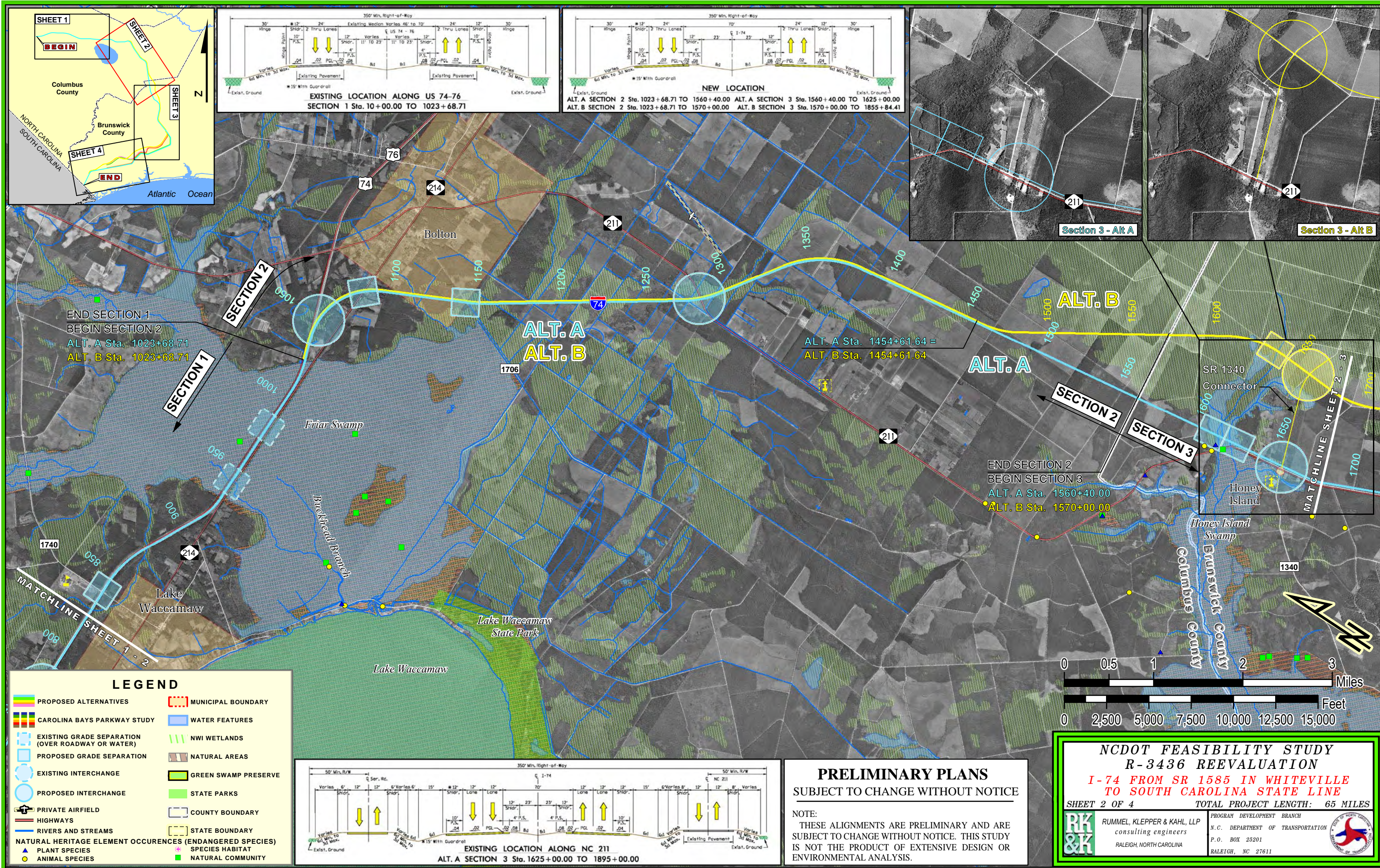
NOTE:
THESE ALIGNMENTS ARE PRELIMINARY AND ARE SUBJECT TO CHANGE WITHOUT NOTICE. THIS STUDY IS NOT THE PRODUCT OF EXTENSIVE DESIGN OR ENVIRONMENTAL ANALYSIS.

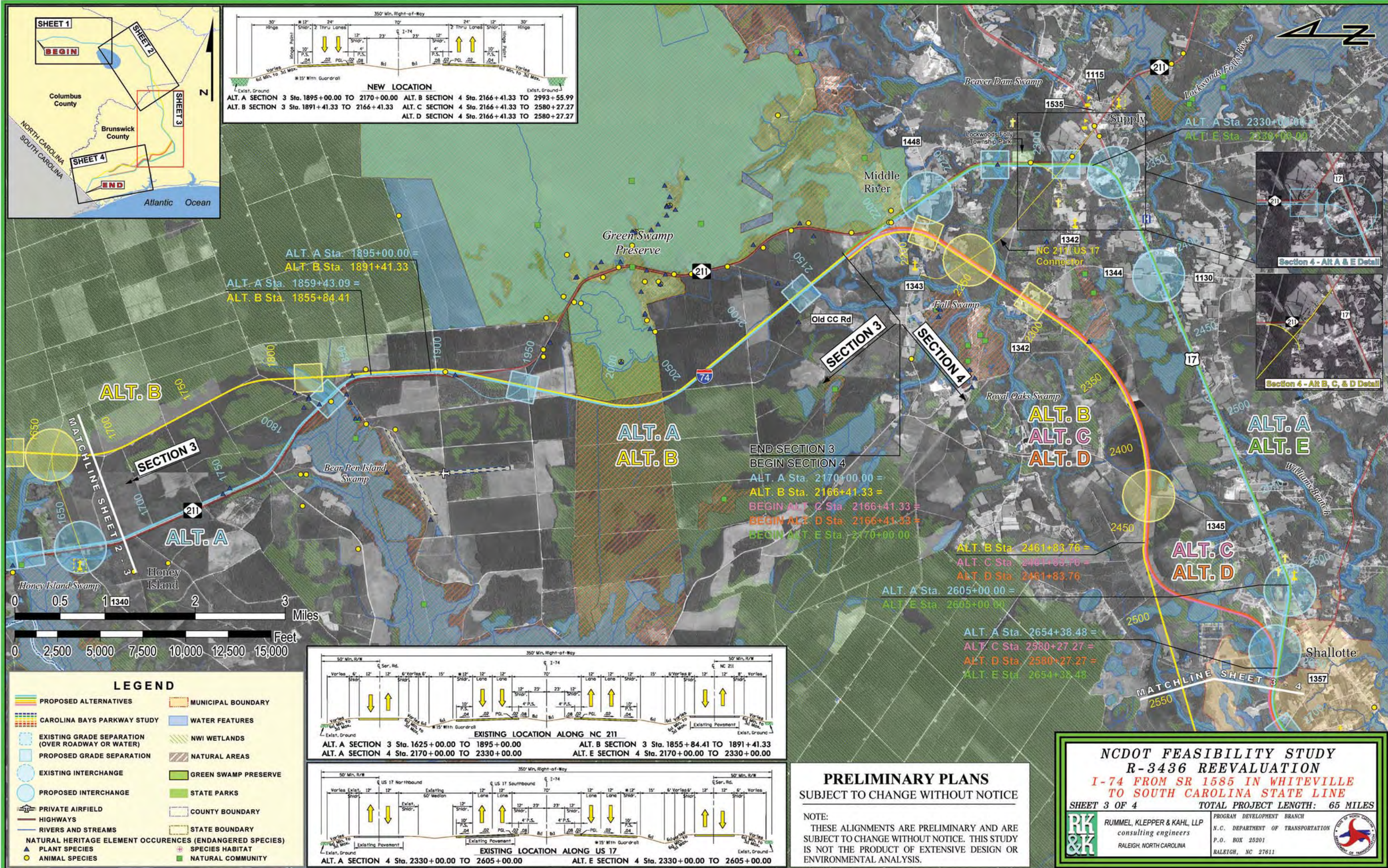
NCDOT FEASIBILITY STUDY
R-3436 REEVALUATION
I-74 FROM SR 1585 IN WHITEVILLE TO SOUTH CAROLINA STATE LINE

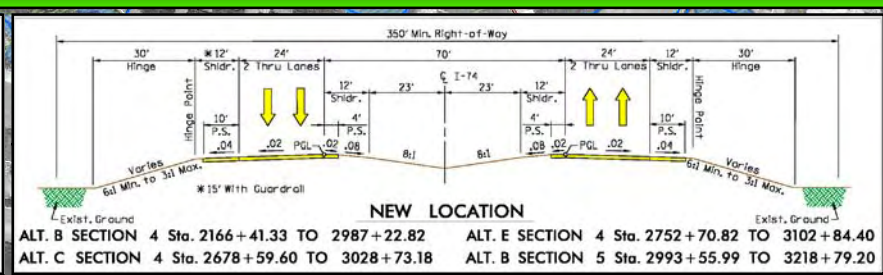
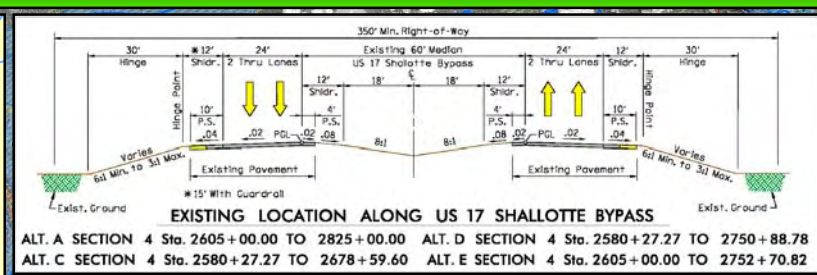
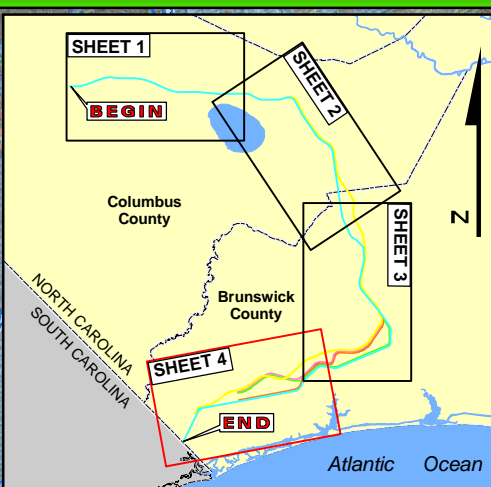
SHEET 1 OF 4 TOTAL PROJECT LENGTH: 65 MILES

RUMMEL, KLEPPER & KAHL, LLP
consulting engineers
RALEIGH, NORTH CAROLINA

PROGRAM DEVELOPMENT BRANCH
N.C. DEPARTMENT OF TRANSPORTATION
P.O. BOX 25201
RALEIGH, NC 27611



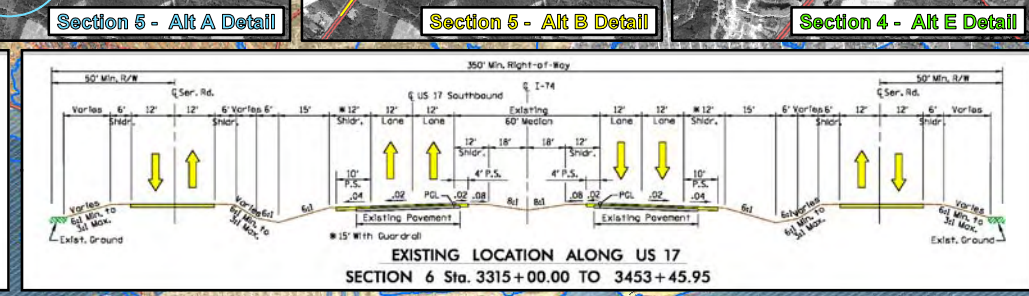
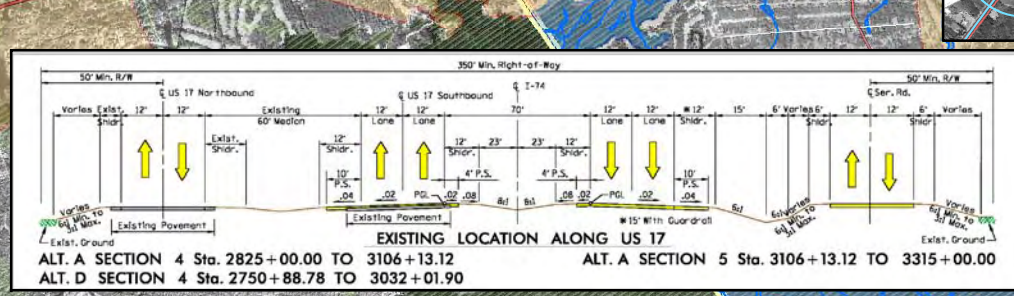
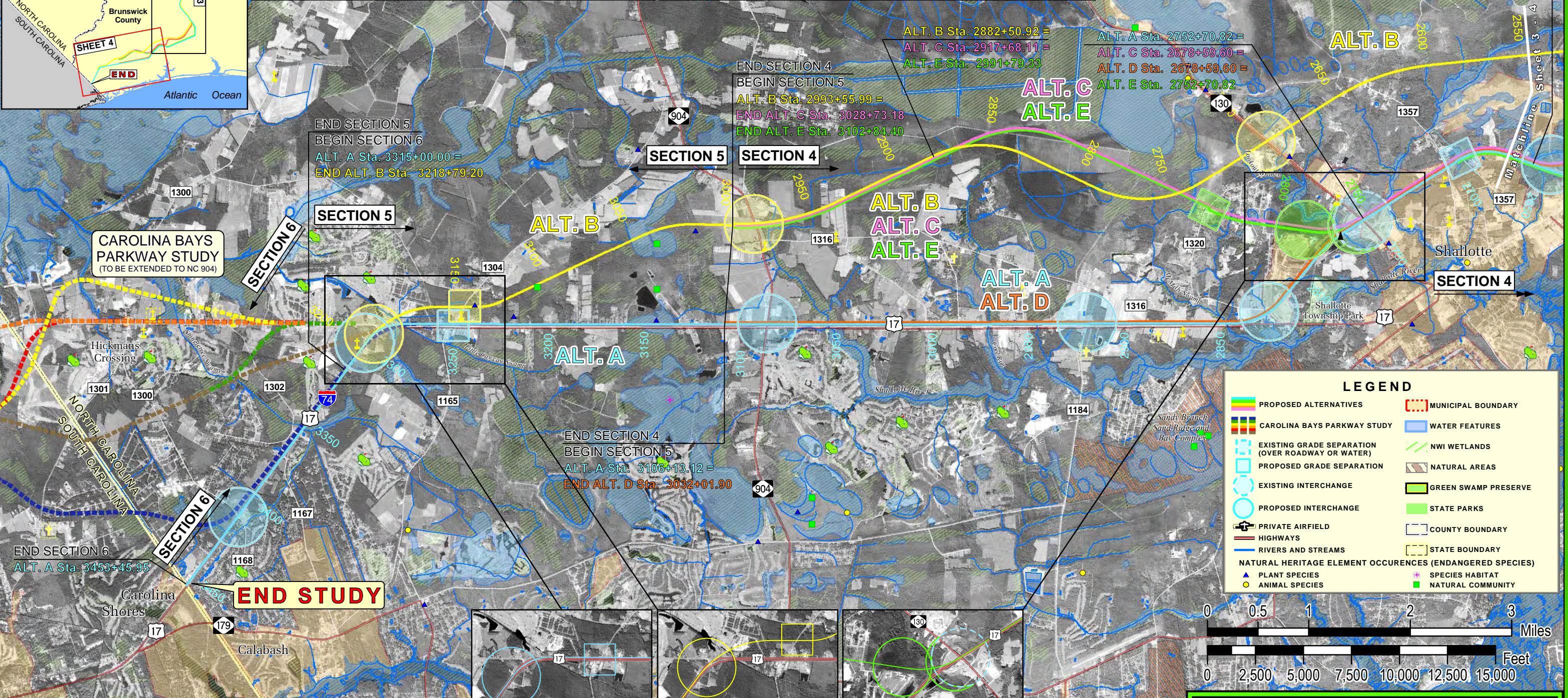




PRELIMINARY PLANS
SUBJECT TO CHANGE WITHOUT NOTICE

NOTE:
THESE ALIGNMENTS ARE PRELIMINARY AND ARE SUBJECT TO CHANGE WITHOUT NOTICE. THIS STUDY IS NOT THE PRODUCT OF EXTENSIVE DESIGN OR ENVIRONMENTAL ANALYSIS.

ALT. A Sta. 2654+38.48 =
ALT. C Sta. 2580+27.27 =
ALT. D Sta. 2580+27.27 =
ALT. E Sta. 2654+38.48 =



NCDOT FEASIBILITY STUDY
R-3436 REEVALUATION
I-74 FROM SR 1585 IN WHITEVILLE TO SOUTH CAROLINA STATE LINE

SHEET 4 OF 4 TOTAL PROJECT LENGTH: 65 MILES

RK & K
RUMMEL, KLEPPER & KAHL, LLP
consulting engineers
RALEIGH, NORTH CAROLINA

PROGRAM DEVELOPMENT BRANCH
N.C. DEPARTMENT OF TRANSPORTATION
P.O. BOX 25201
RALEIGH, NC 27611