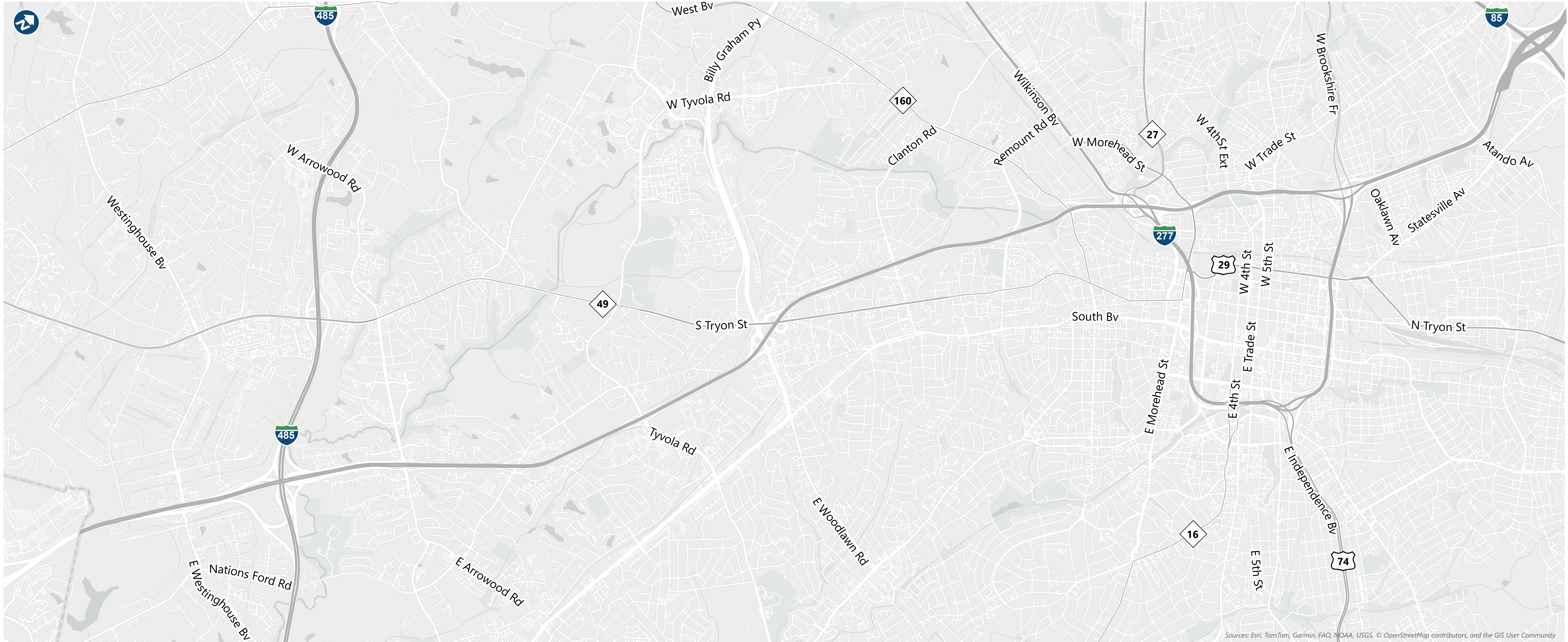
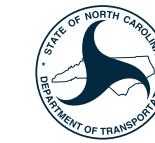




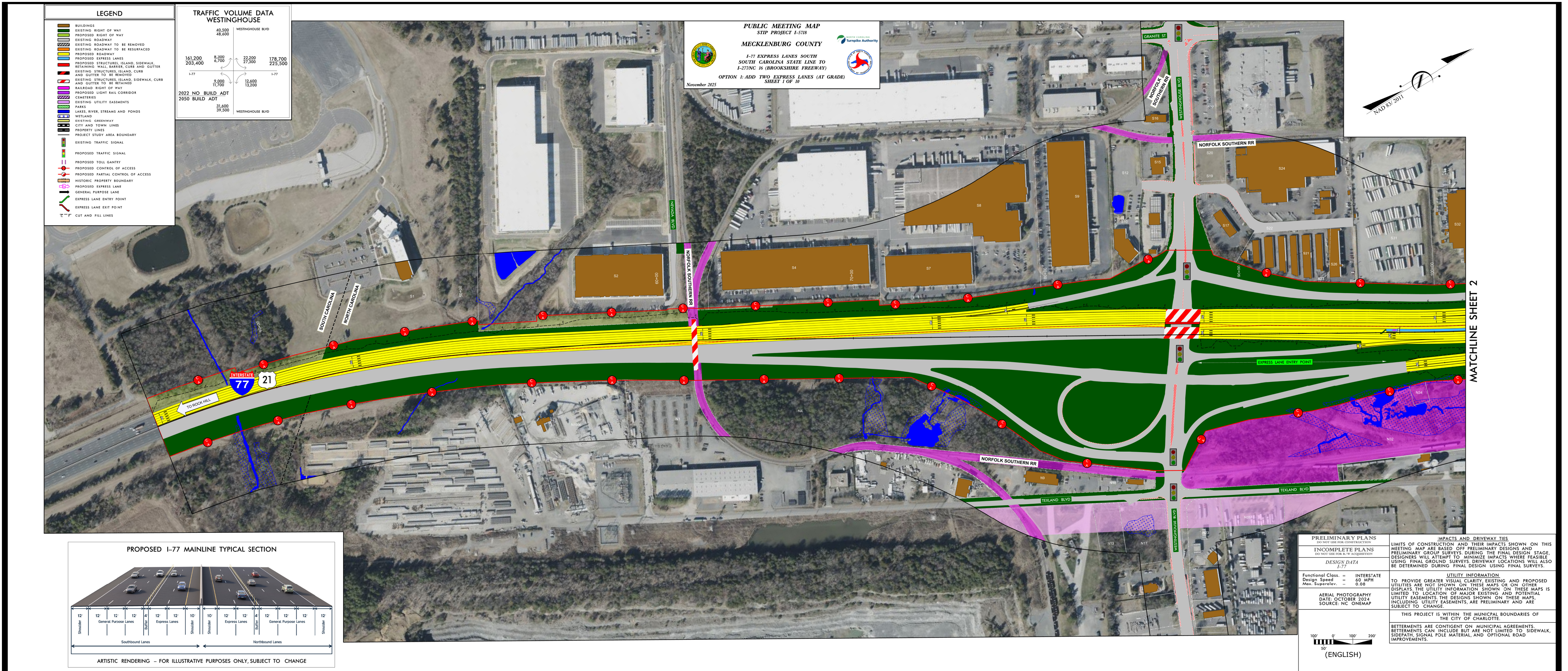
I-77 South Express Lanes

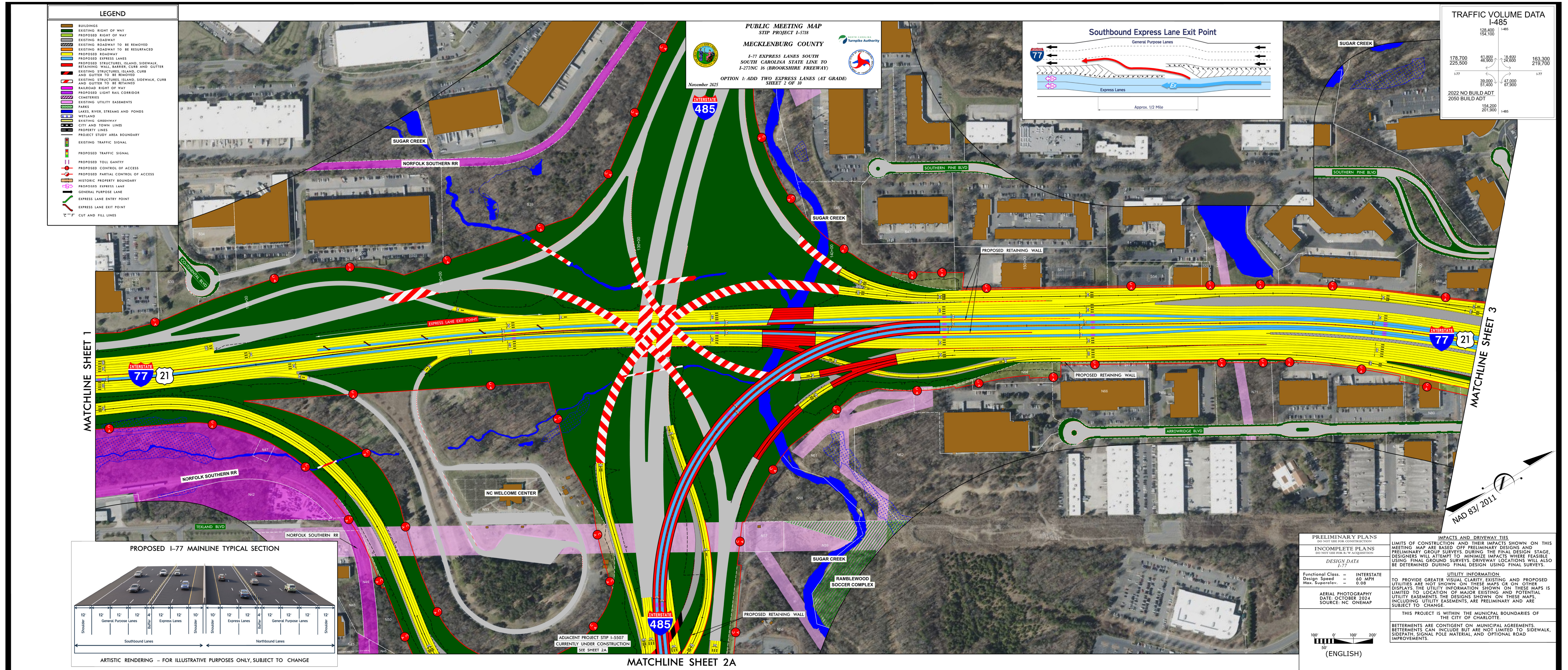
STIP Project I-5718 | Mecklenburg County | Public Meetings – November 12 & 13, 2025



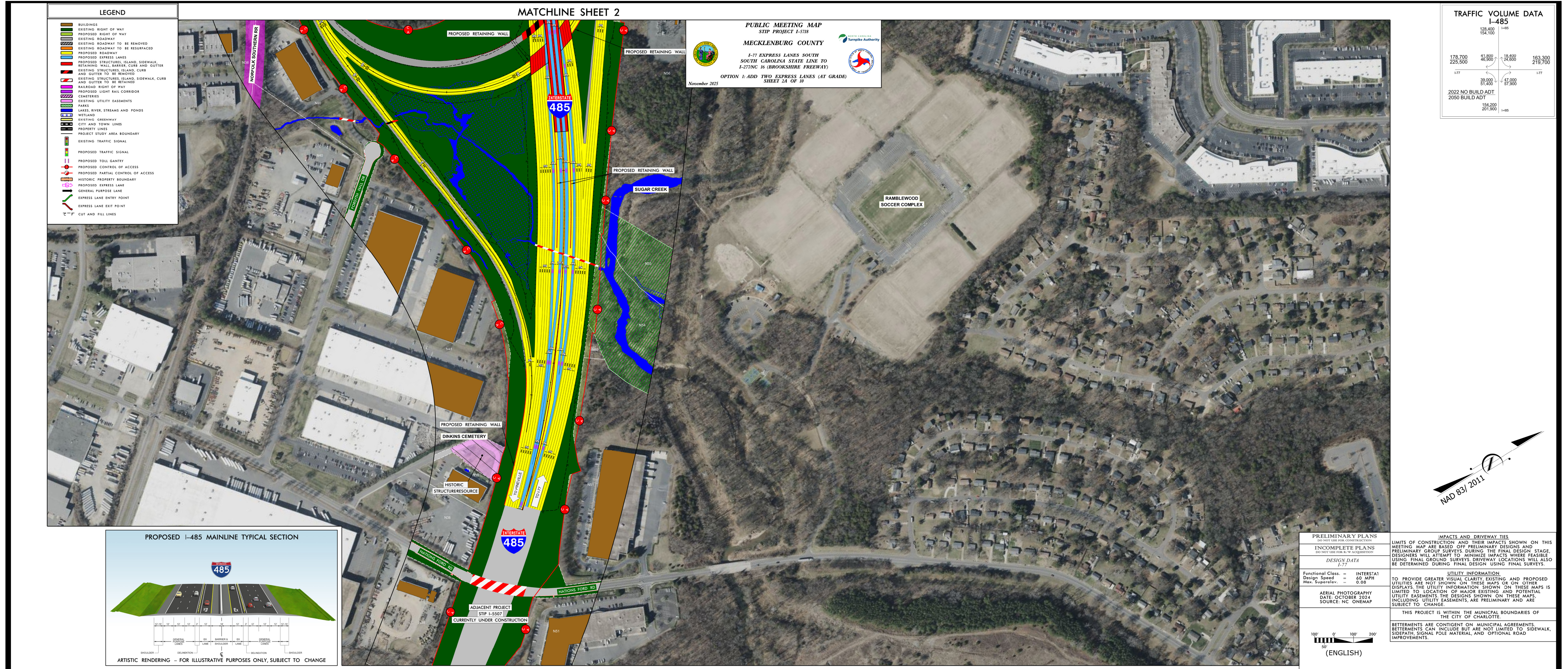
Sources: Esri, TomTom, Garmin, FAO, NOAA, USGS, © OpenStreetMap contributors, and the GIS User Community

[i](#) Press the segment above to view more details.





AT-GRADE



PUBLIC MEETING MAP
 STIP PROJECT I-5718
MECKLENBURG COUNTY
 I-77 EXPRESS LANES SOUTH CAROLINA STATE LINE TO I-27/NC 16 (BROOKSHIRE FREEWAY)
 OPTION 1: ADD TWO EXPRESS LANES (AT GRADE)
 SHEET 2A OF 10
 November 2025

TRAFFIC VOLUME DATA I-485

	128,400	154,100		
178,700	41,800	18,400	163,300	
225,500	46,900	24,600	219,700	
	39,200	47,000		
	154,200	201,900		

PRELIMINARY PLANS
 DO NOT USE FOR CONSTRUCTION

INCOMPLETE PLANS
 DO NOT USE FOR R/W ACQUISITION

DESIGN DATA
 I-77

Functional Class. = INTERSTATE
 Design Speed = 60 MPH
 Max. Superelev. = 0.08

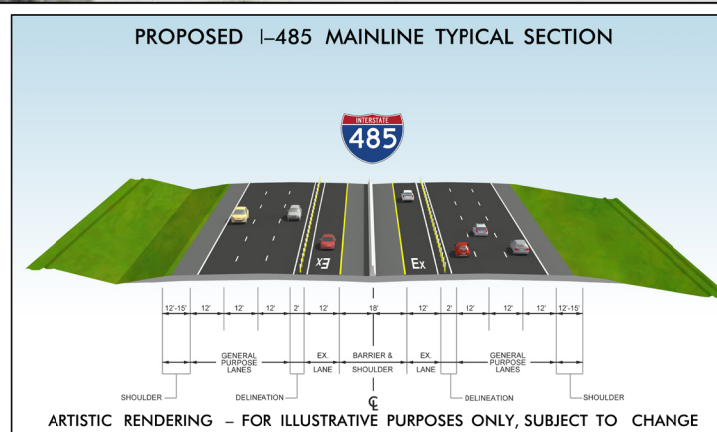
AERIAL PHOTOGRAPHY
 DATE: OCTOBER 2024
 SOURCE: NC ONEMAP

UTILITY INFORMATION
 TO PROVIDE GREATER VISUAL CLARITY, EXISTING AND PROPOSED UTILITIES ARE NOT SHOWN ON THESE MAPS OR ON OTHER DISPLAYS. THE UTILITY INFORMATION SHOWN ON THESE MAPS IS LIMITED TO LOCATION OF MAJOR EXISTING AND POTENTIAL UTILITY EASEMENTS. THE DESIGNS SHOWN ON THESE MAPS, INCLUDING UTILITY EASEMENTS, ARE PRELIMINARY AND ARE SUBJECT TO CHANGE.

THIS PROJECT IS WITHIN THE MUNICIPAL BOUNDARIES OF THE CITY OF CHARLOTTE.

BETTERMENTS ARE CONTINGENT ON MUNICIPAL AGREEMENTS. BETTERMENTS CAN INCLUDE BUT ARE NOT LIMITED TO SIDEWALK, SIDEPATH, SIGNAL POLE MATERIAL, AND OPTIONAL ROAD IMPROVEMENTS.

(ENGLISH)

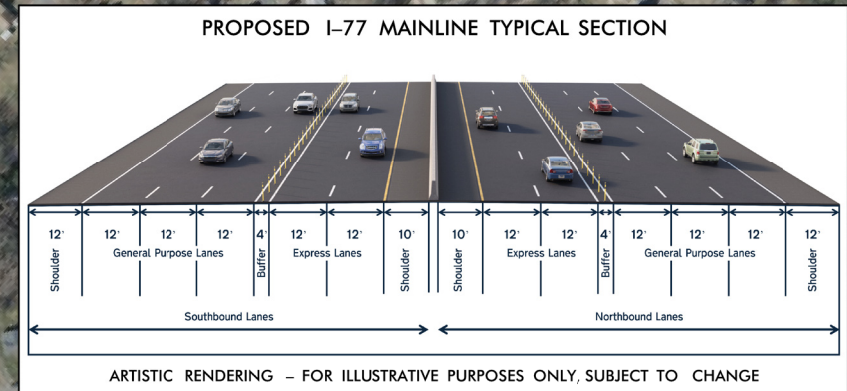
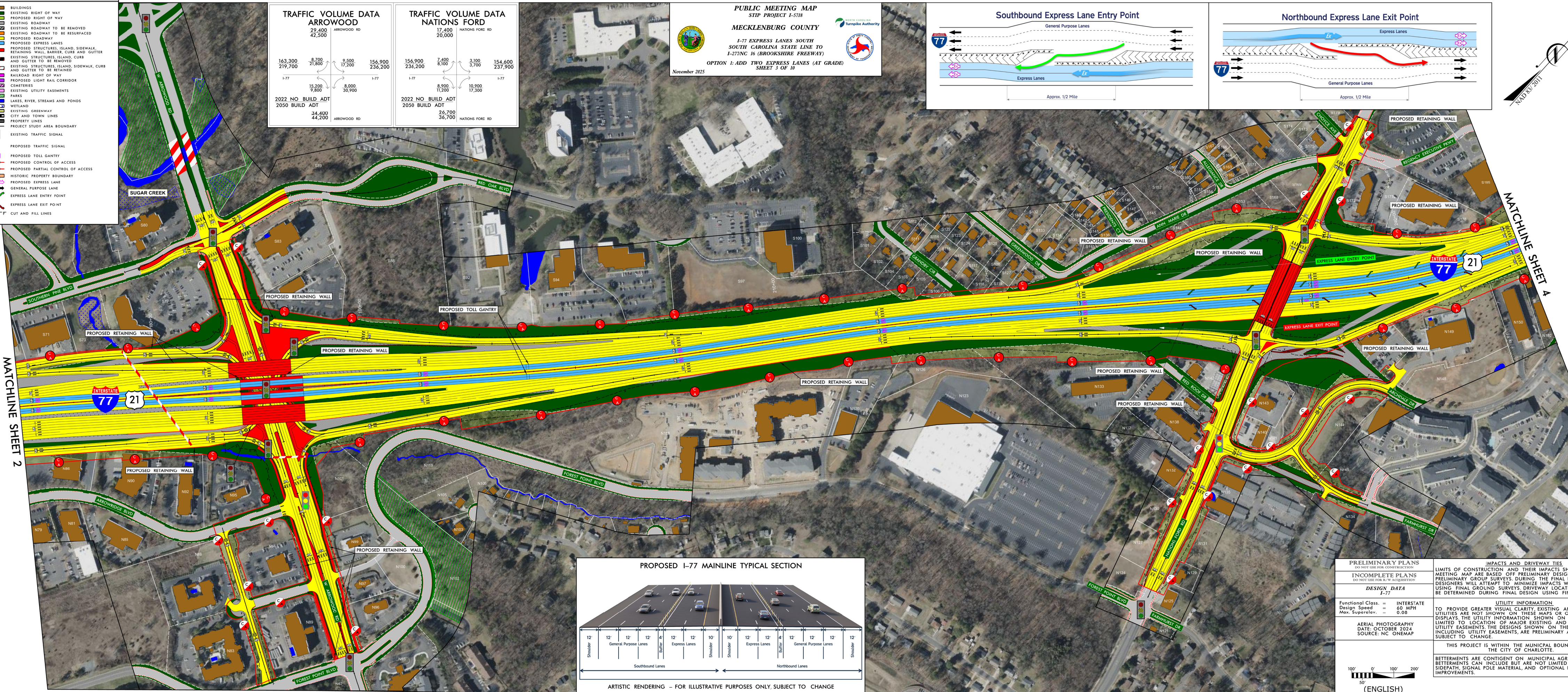
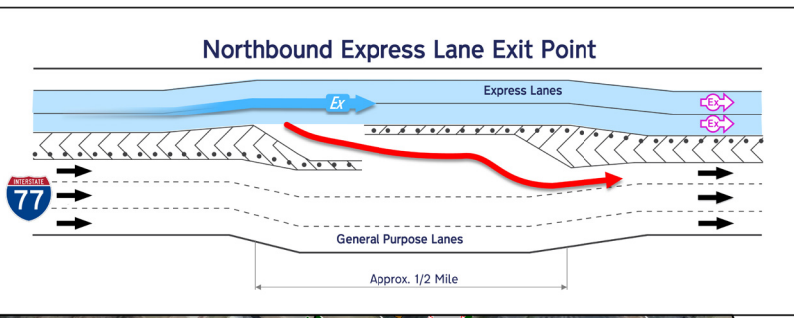
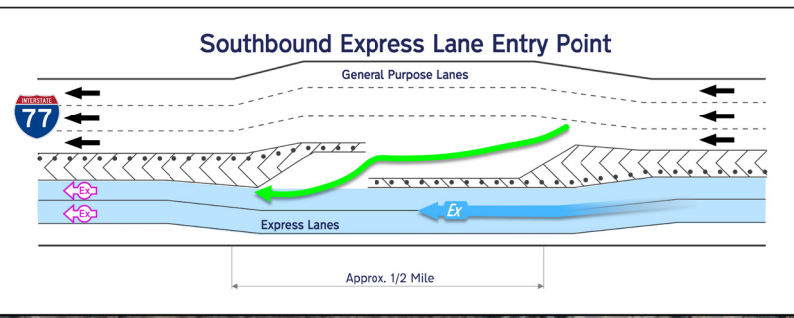


LEGEND

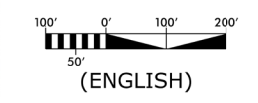
- BUILDINGS
- PROPOSED RIGHT OF WAY
- EXISTING ROADWAY
- EXISTING ROADWAY TO BE RESURFACED
- PROPOSED ROADWAY
- PROPOSED EXPRESS LANES
- PROPOSED STRUCTURES, ISLAND, SIDEWALK, RETAINING WALL, BARRIER, CURB AND GUTTER
- EXISTING STRUCTURES, ISLAND, SIDEWALK, CURB AND GUTTER TO BE REMOVED
- RAILROAD RIGHT OF WAY
- PROPOSED LIGHT RAIL CORRIDOR
- CEMETERIES
- EXISTING UTILITY EASEMENTS
- PARKS
- LAKES, RIVER, STREAMS AND PONDS
- WETLAND
- EXISTING GREENWAY
- CITY AND TOWN LINES
- PROPERTY LINES
- PROJECT STUDY AREA BOUNDARY
- EXISTING TRAFFIC SIGNAL
- PROPOSED TRAFFIC SIGNAL
- PROPOSED TOLL GANTRY
- PROPOSED CONTROL OF ACCESS
- PROPOSED PARTIAL CONTROL OF ACCESS
- HISTORIC PROPERTY BOUNDARY
- PROPOSED EXPRESS LANE
- GENERAL PURPOSE LANE
- EXPRESS LANE ENTRY POINT
- EXPRESS LANE EXIT POINT
- CUT AND FILL LINES

TRAFFIC VOLUME DATA ARROWOOD				TRAFFIC VOLUME DATA NATIONS FORD			
163,300	8,700	9,500	156,900	156,900	7,400	3,300	154,600
219,700	21,800	17,200	236,200	236,200	8,100	3,700	237,900
2022 NO. BUILT ADT				2022 NO. BUILT ADT			
2050 BUILT ADT				2050 BUILT ADT			
34,400	9,800	8,000	30,900	26,700	11,200	10,900	17,200
ARROWOOD RD				NATIONS FORD RD			

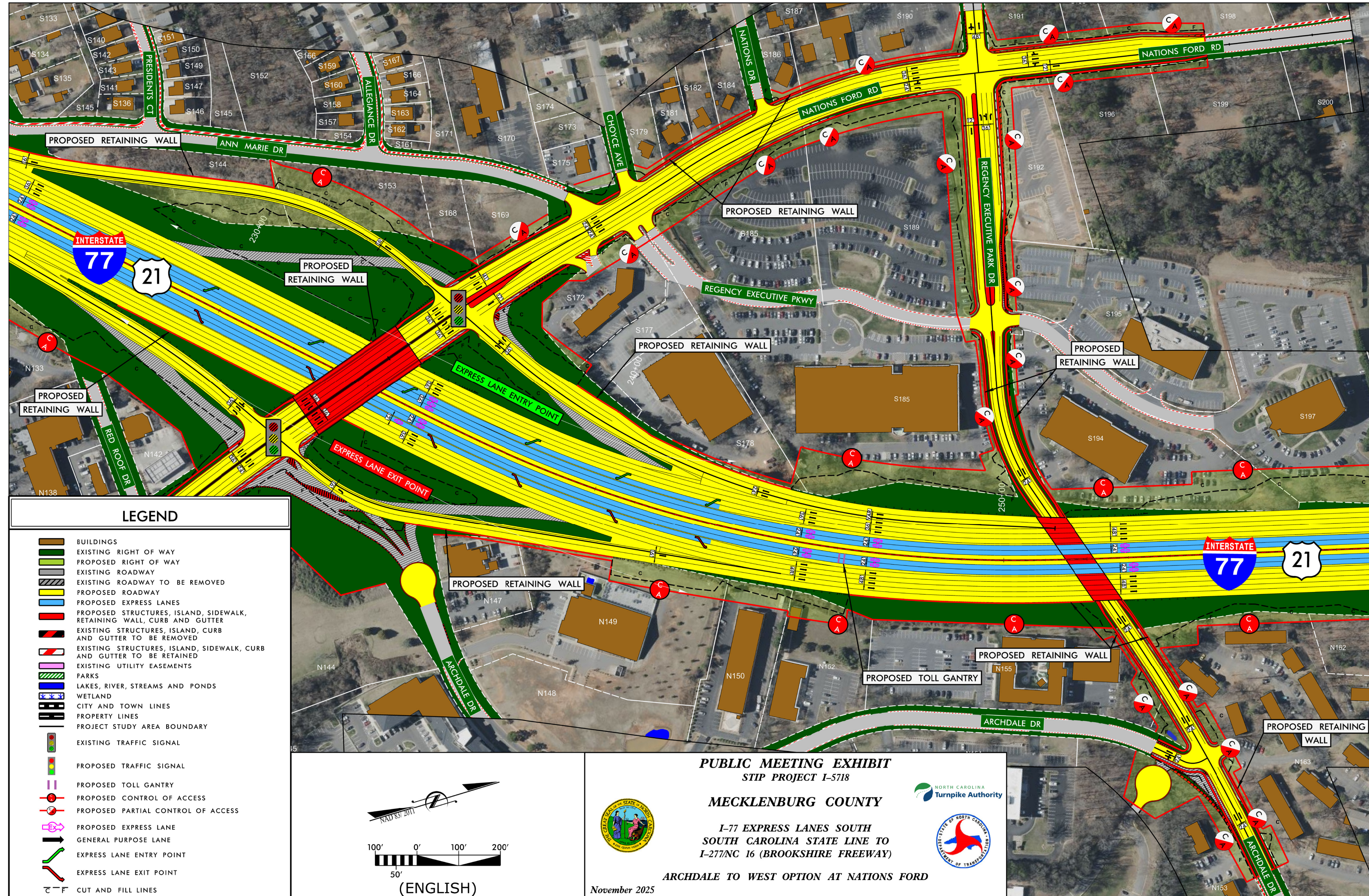
PUBLIC MEETING MAP
 STIP PROJECT I-5716
MECKLENBURG COUNTY
 I-77 EXPRESS LANES SOUTH
 SOUTH CAROLINA STATE LINE TO
 I-277/NC 16 (BROOKSHIRE FREEWAY)
 OPTION 1: ADD TWO EXPRESS LANES (AT GRADE)
 SHEET 3 OF 10
 November 2025

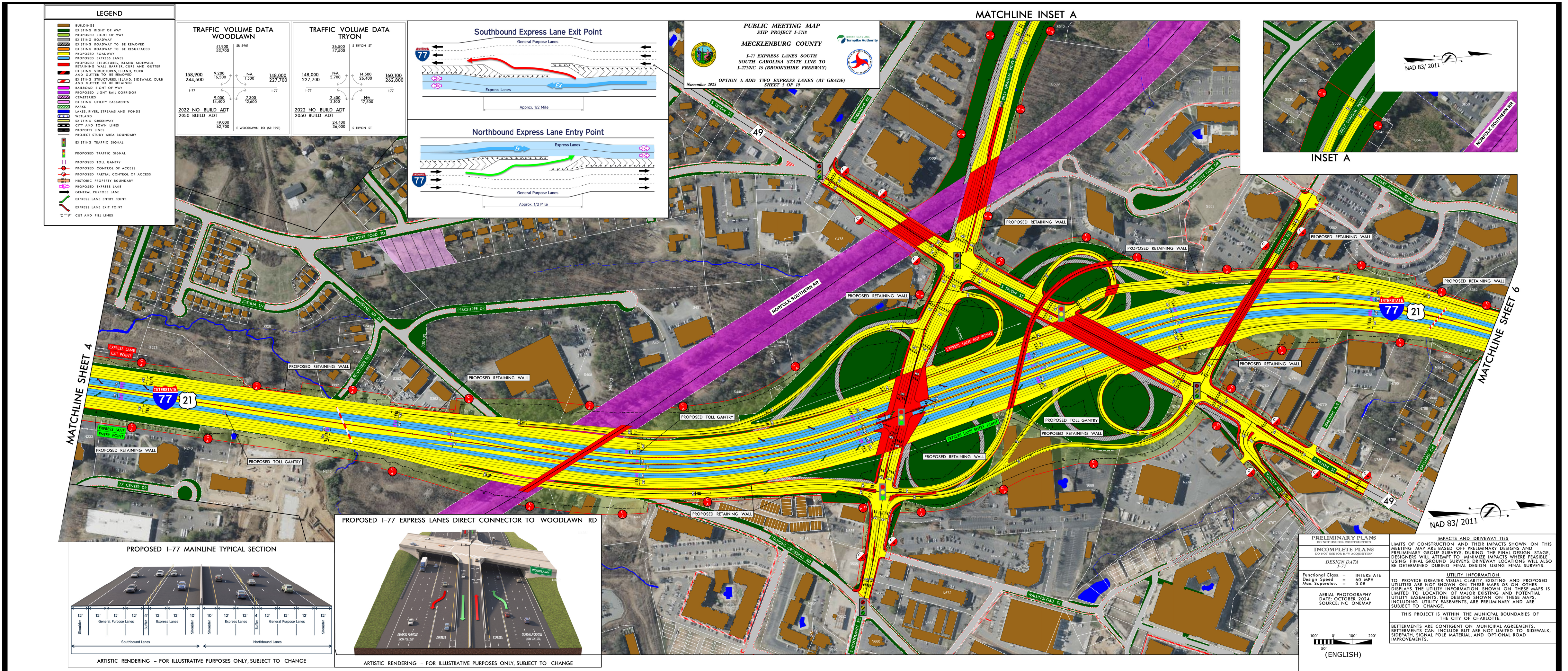


PRELIMINARY PLANS DO NOT USE FOR CONSTRUCTION	LIMITS OF CONSTRUCTION AND THEIR IMPACTS SHOWN ON THIS MEETING MAP ARE BASED OFF PRELIMINARY DESIGNS AND PRELIMINARY GROUP SURVEYS DURING THE FINAL DESIGN STAGE. DESIGNERS WILL ATTEMPT TO MINIMIZE IMPACTS WHERE FEASIBLE USING FINAL GROUND SURVEYS. DRIVEWAY LOCATIONS WILL ALSO BE DETERMINED DURING FINAL DESIGN USING FINAL SURVEYS.
INCOMPLETE PLANS DO NOT USE FOR R.F.W. ACQUISITION	
DESIGN DATA I-77	
Functional Class. = INTERSTATE Design Speed = 60 MPH Max. Superelev. = 0.08	UTILITY INFORMATION TO PROVIDE GREATER VISUAL CLARITY EXISTING AND PROPOSED UTILITIES ARE NOT SHOWN ON THESE MAPS OR ON OTHER DISPLAYS. THE UTILITY INFORMATION SHOWN ON THESE MAPS IS LIMITED TO LOCATION OF MAJOR EXISTING AND POTENTIAL UTILITY EASEMENTS. THE DESIGNS SHOWN ON THESE MAPS, INCLUDING UTILITY EASEMENTS, ARE PRELIMINARY AND ARE SUBJECT TO CHANGE.
AERIAL PHOTOGRAPHY DATE: OCTOBER 2024 SOURCE: NC ONEMAP	
	THIS PROJECT IS WITHIN THE MUNICIPAL BOUNDARIES OF THE CITY OF CHARLOTTE.
	BETTERMENTS ARE CONTINGENT ON MUNICIPAL AGREEMENTS. BETTERMENTS CAN INCLUDE BUT ARE NOT LIMITED TO SIDEWALK, SIDEPATH, SIGNAL POLE MATERIAL, AND OPTIONAL ROAD IMPROVEMENTS.



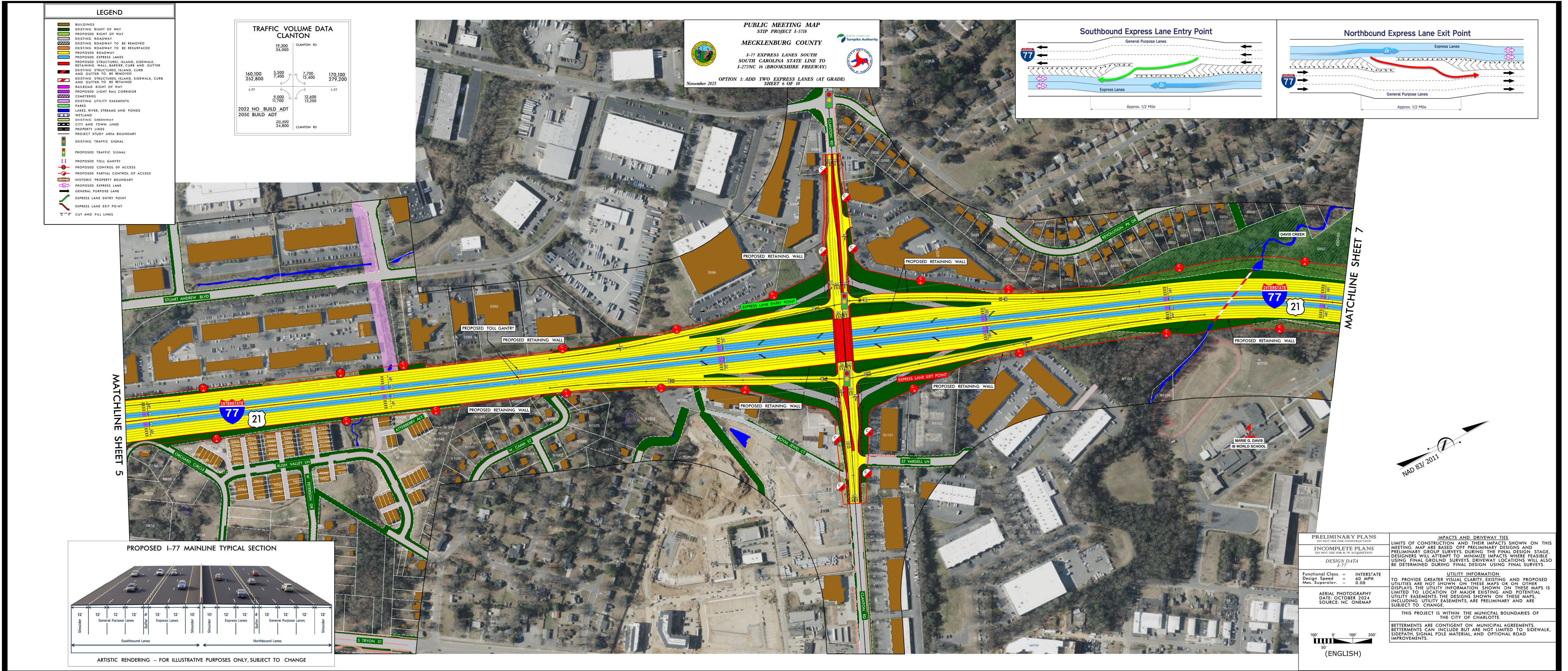
AT-GRADE

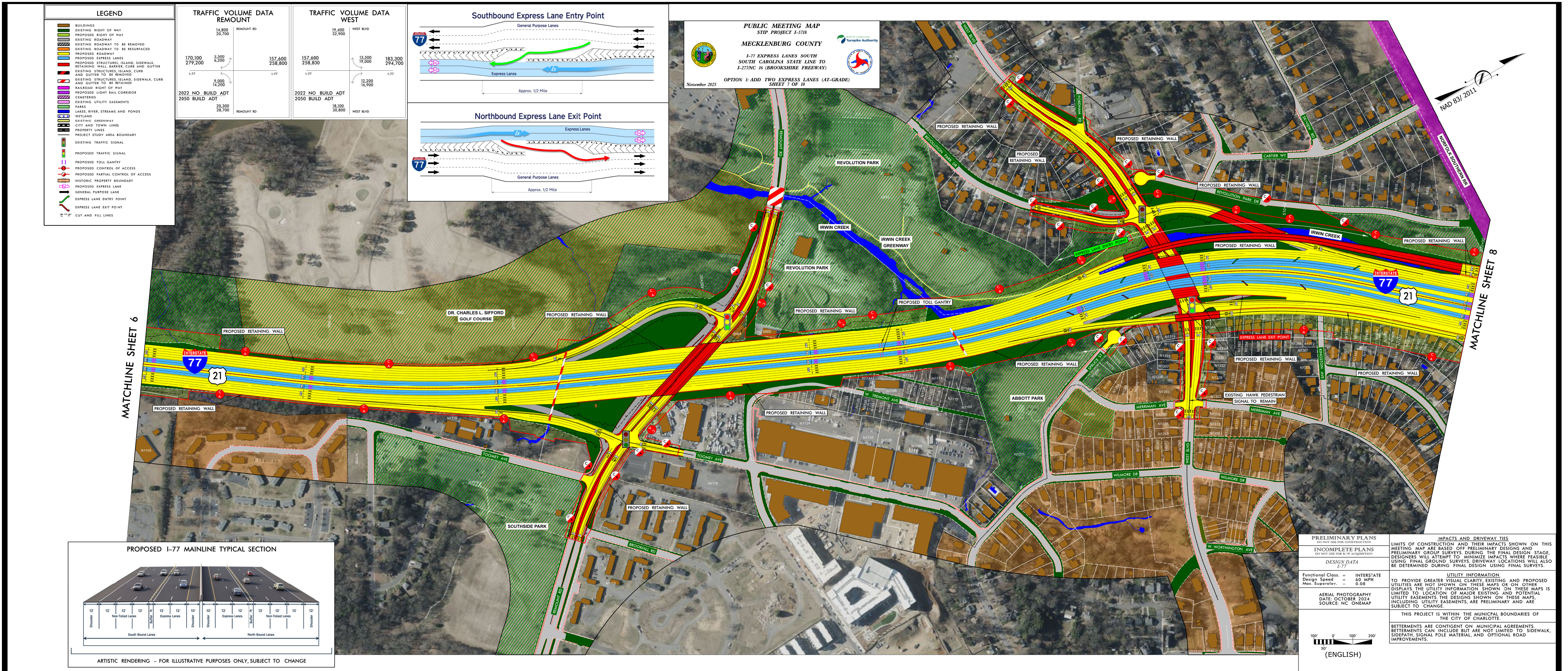






Artistic rendering – for illustrative purposes only, subject to change





West Blvd Rendering

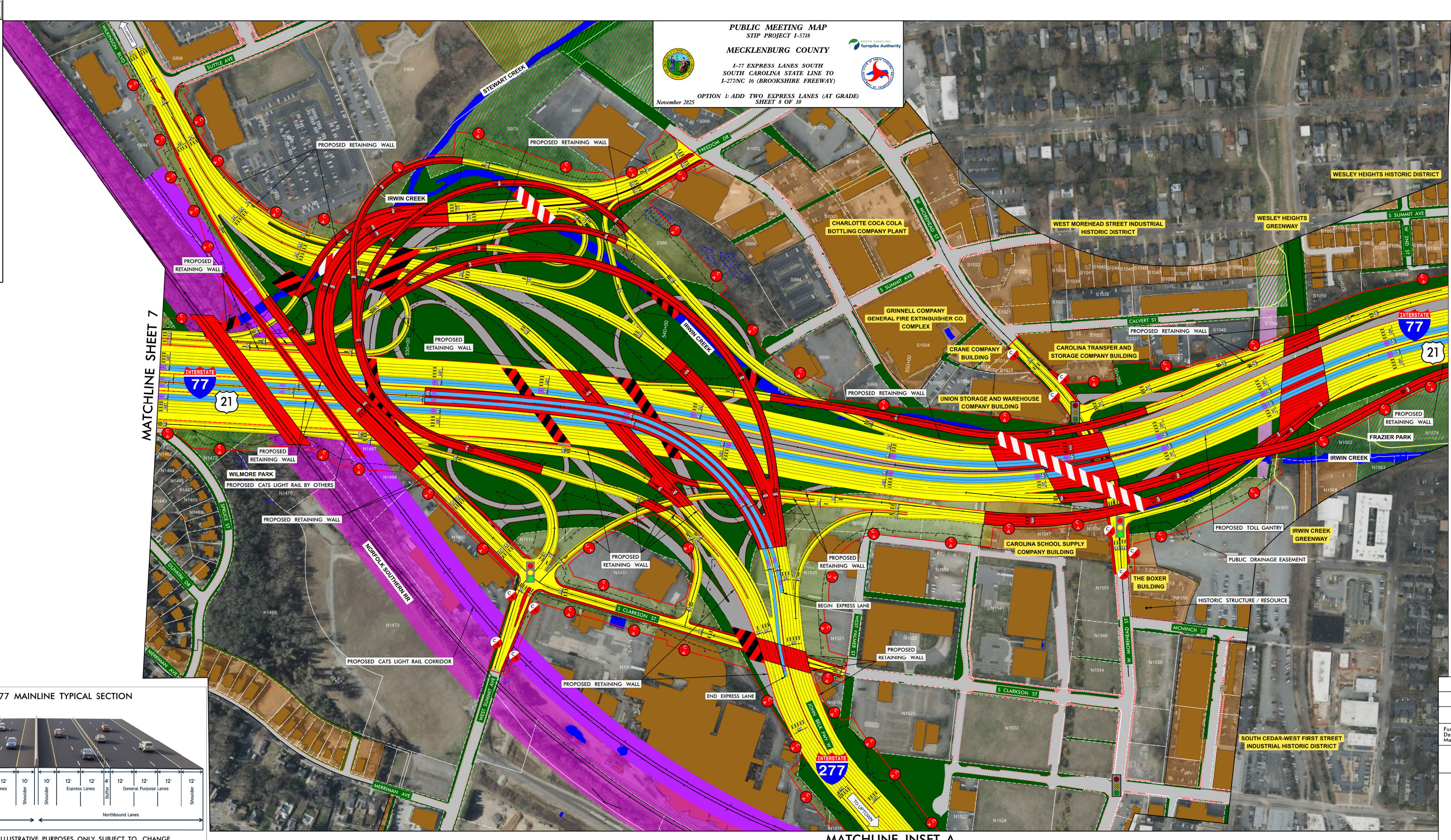


Final designs are still under consideration and items such as noise walls, landscaping, etc. have not been determined. This artistic rendering is for illustrative purposes only.

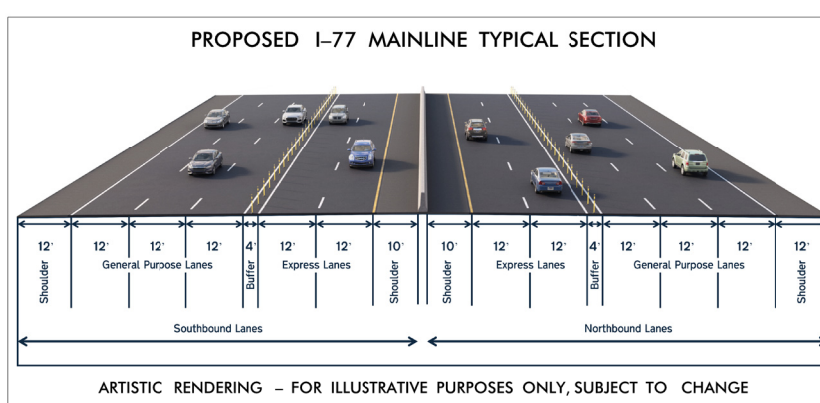
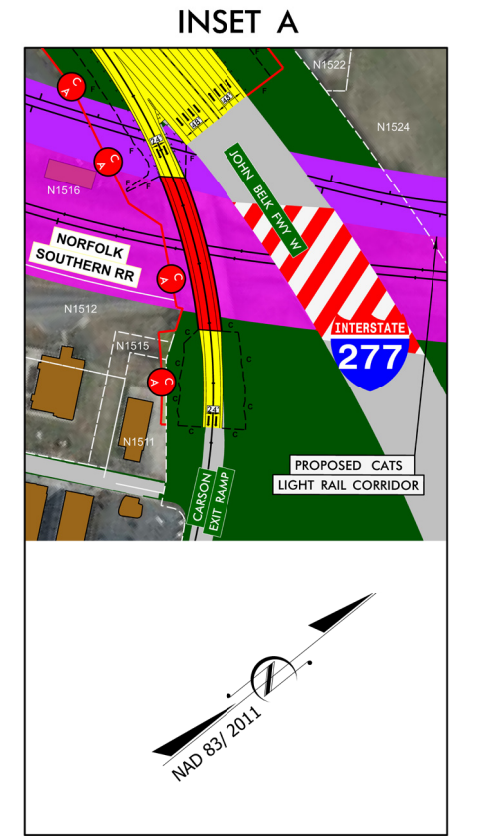
WEST BLVD RENDERING

PUBLIC MEETING MAP
STIP PROJECT I-5716
MECKLENBURG COUNTY
 I-77 EXPRESS LANES SOUTH
 SOUTH CAROLINA STATE LINE TO
 I-277/NC 16 (BROOKSHIRE FREEWAY)
OPTION 1: ADD TWO EXPRESS LANES (AT GRADE)
SHEET 8 OF 10
 November 2025

LEGEND	
[Symbol]	BUILDINGS
[Symbol]	EXISTING RIGHT OF WAY
[Symbol]	PROPOSED RIGHT OF WAY
[Symbol]	EXISTING ROADWAY
[Symbol]	EXISTING ROADWAY TO BE RESURFACED
[Symbol]	PROPOSED ROADWAY
[Symbol]	PROPOSED EXPRESS LANES
[Symbol]	PROPOSED STRUCTURES, ISLAND, SIDEWALK, RETAINING WALL, BARRIER, CURB AND GUTTER
[Symbol]	EXISTING STRUCTURES, ISLAND, CURB AND GUTTER TO BE REMOVED
[Symbol]	RAILROAD RIGHT OF WAY
[Symbol]	PROPOSED LIGHT RAIL CORRIDOR
[Symbol]	CEMETERIES
[Symbol]	EXISTING UTILITY EASEMENTS
[Symbol]	PARKS
[Symbol]	LAKES, RIVER, STREAMS AND PONDS
[Symbol]	WETLAND
[Symbol]	EXISTING GREENWAY
[Symbol]	CITY AND TOWN LINES
[Symbol]	PROPERTY LINES
[Symbol]	PROJECT STUDY AREA BOUNDARY
[Symbol]	EXISTING TRAFFIC SIGNAL
[Symbol]	PROPOSED TRAFFIC SIGNAL
[Symbol]	PROPOSED TOLL GANTRY
[Symbol]	PROPOSED CONTROL OF ACCESS
[Symbol]	PROPOSED PARTIAL CONTROL OF ACCESS
[Symbol]	HISTORIC PROPERTY BOUNDARY
[Symbol]	PROPOSED EXPRESS LANE
[Symbol]	GENERAL PURPOSE LANE
[Symbol]	EXPRESS LANE ENTRY POINT
[Symbol]	EXPRESS LANE EXIT POINT
[Symbol]	CUT AND FILL LINES



TRAFFIC VOLUME DATA BELK		TRAFFIC VOLUME DATA MOREHEAD	
47,500	88,600	19,800	42,100
183,300	294,700	147,800	208,800
2,800	7,300	2,500	6,900
4,500	6,000	3,700	5,000
24,900	77,400	14,500	7,800
2022 NO BUILD ADT	2050 BUILD ADT	2022 NO BUILD ADT	2050 BUILD ADT
1-277	1-277	1-277	1-277
81,600	163,900	37,600	47,400



PRELIMINARY PLANS
 DO NOT USE FOR CONSTRUCTION

INCOMPLETE PLANS
 DO NOT USE FOR R.F.W. ACQUISITION

DESIGN DATA
 I-77

Functional Class. = INTERSTATE
 Design Speed = 60 MPH
 Max. Superelev. = 0.08

AERIAL PHOTOGRAPHY
 DATE: OCTOBER 2024
 SOURCE: NC ONEMAP

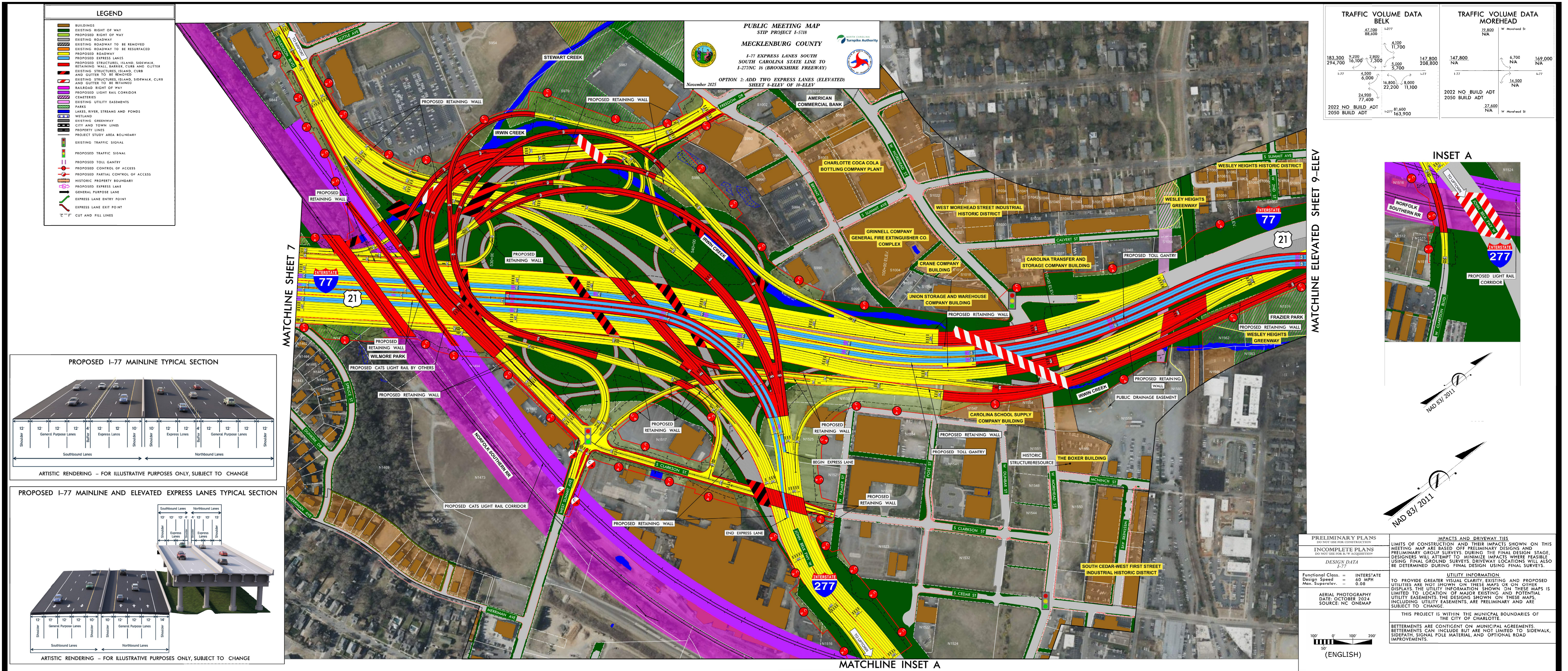
UTILITIES INFORMATION
 TO PROVIDE GREATER VISUAL CLARITY, EXISTING AND PROPOSED UTILITIES ARE NOT SHOWN ON THESE MAPS OR ON OTHER DISPLAYS. THE UTILITY INFORMATION SHOWN ON THESE MAPS IS LIMITED TO LOCATION OF MAJOR EXISTING AND POTENTIAL UTILITY EASEMENTS. THE DESIGNS SHOWN ON THESE MAPS, INCLUDING UTILITY EASEMENTS, ARE PRELIMINARY AND ARE SUBJECT TO CHANGE.

THIS PROJECT IS WITHIN THE MUNICIPAL BOUNDARIES OF THE CITY OF CHARLOTTE.

BETTERMENTS ARE CONTINGENT ON MUNICIPAL AGREEMENTS. BETTERMENTS CAN INCLUDE BUT ARE NOT LIMITED TO SIDEWALK, SIDEPATH, SIGNAL POLE MATERIAL, AND OPTIONAL ROAD IMPROVEMENTS.

100' 0' 100' 200'
 50'
 (ENGLISH)

AT-GRADE

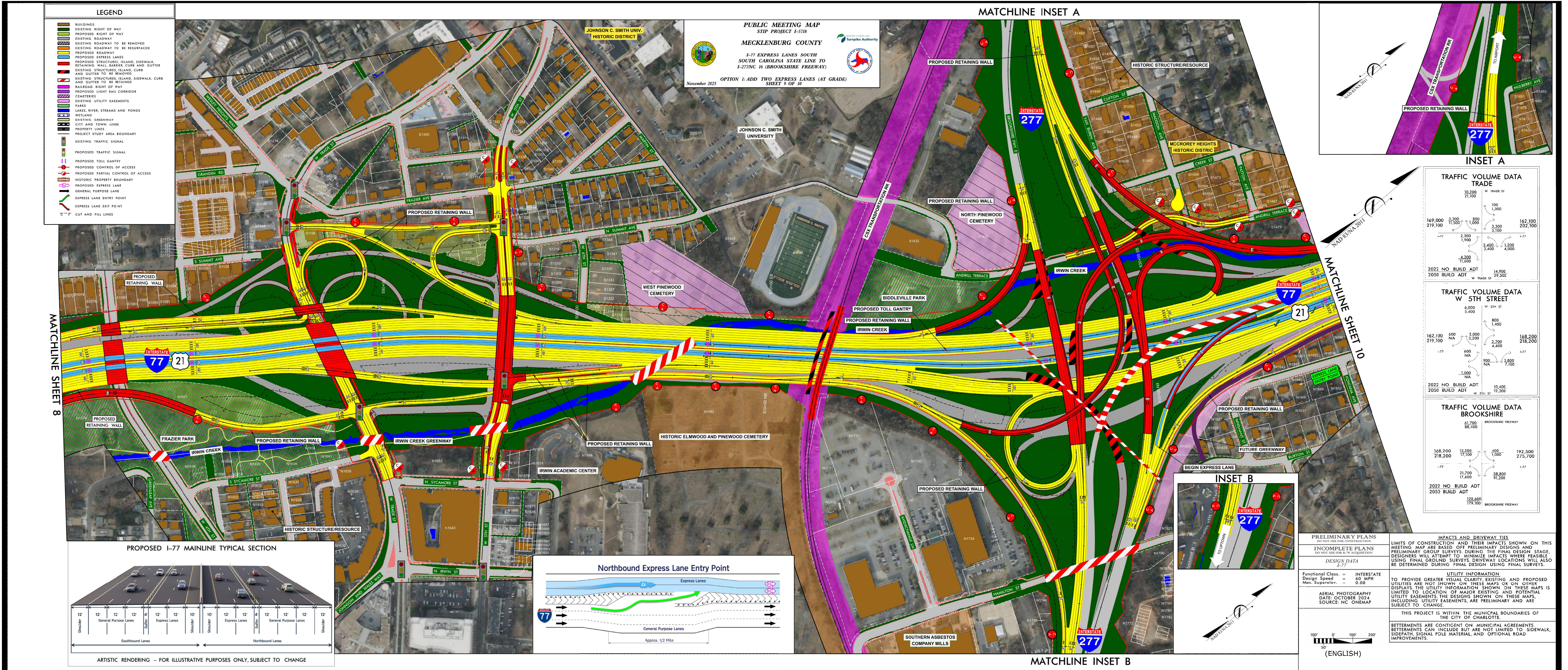


ELEVATED

I-277/Belk Rendering



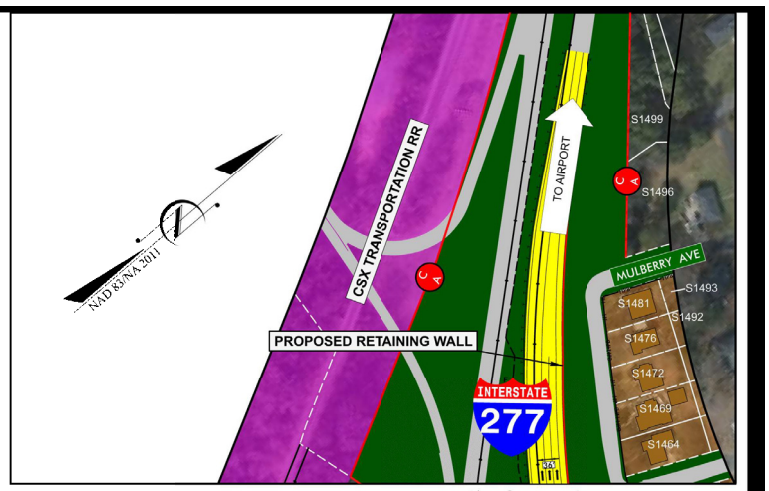
I-277/BELK RENDERING



LEGEND

- BUILDINGS
- EXISTING RIGHT OF WAY
- PROPOSED RIGHT OF WAY
- EXISTING ROADWAY
- EXISTING ROADWAY TO BE RESURFACED
- PROPOSED EXPRESS LANES
- PROPOSED STRUCTURES, ISLAND, SIDEWALK, RETAINING WALL, BARRIER, CURB AND GUTTER
- EXISTING STRUCTURES, ISLAND, SIDEWALK, CURB AND GUTTER TO BE REMOVED
- RAILROAD RIGHT OF WAY
- PROPOSED LIGHT RAIL CORRIDOR
- CEMETERIES
- EXISTING UTILITY EASEMENTS
- PARKS
- LAKES, RIVERS, STREAMS AND PONDS
- WETLAND
- EXISTING GREENWAY
- CITY AND TOWN LINES
- PROPERTY LINES
- PROJECT STUDY AREA BOUNDARY
- EXISTING TRAFFIC SIGNAL
- PROPOSED TRAFFIC SIGNAL
- PROPOSED TOLL GANTRY
- PROPOSED CONTROL OF ACCESS
- PROPOSED PARTIAL CONTROL OF ACCESS
- HISTORIC PROPERTY BOUNDARY
- PROPOSED EXPRESS LANE
- GENERAL PURPOSE LANE
- EXPRESS LANE ENTRY POINT
- EXPRESS LANE EXIT POINT
- CUT AND FILL LINES

PUBLIC MEETING MAP
 STIP PROJECT I-5716
MECKLENBURG COUNTY
 I-77 EXPRESS LANES SOUTH SOUTH CAROLINA STATE LINE TO I-277/NC 16 (BROOKSHIRE FREEWAY)
 November 2025
OPTION 1: ADD TWO EXPRESS LANES (AT GRADE)
 SHEET 9 OF 10



TRAFFIC VOLUME DATA TRADE

10,200	W TRADE ST	162,100
21,100		202,100
169,000	2,300	800
219,100	11,500	1,300
	2,300	3,100
	2,900	3,100
	4,300	14,900
	11,400	29,200
2022 NO BUILD ADT		
2050 BUILD ADT		

TRAFFIC VOLUME DATA W 5TH STREET

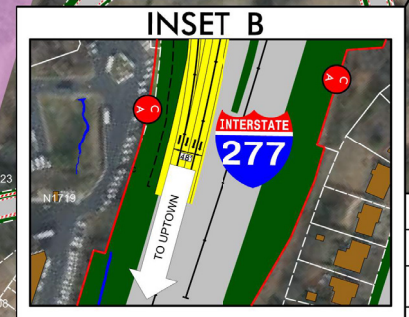
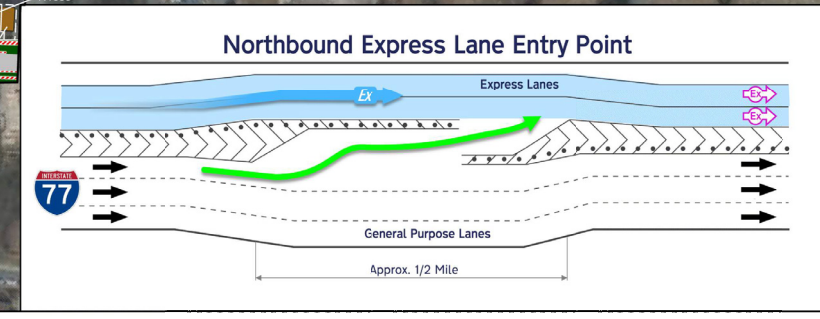
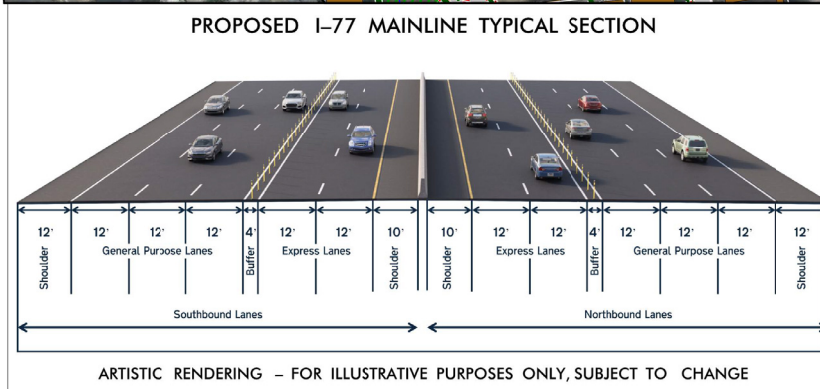
162,100	600	2,000	168,200
219,100	NA	2,200	218,200
	600	2,700	
	NA	4,400	
	3,000	NA	1,800
	NA	7,100	
2022 NO BUILD ADT			
2050 BUILD ADT			

TRAFFIC VOLUME DATA BROOKSHIRE

168,200	13,300	400	192,500
218,200	17,100	1,000	275,700
	21,700	NA	
	17,400	38,800	
2022 NO BUILD ADT			
2050 BUILD ADT			

MATCHLINE SHEET 8

MATCHLINE SHEET 10



PRELIMINARY PLANS
DO NOT USE FOR CONSTRUCTION

INCOMPLETE PLANS
DO NOT USE FOR R.F.W. ACQUISITION

DESIGN DATA
I-77

Functional Class. = INTERSTATE
 Design Speed = 60 MPH
 Max. Superelev. = 0.08

AERIAL PHOTOGRAPHY
 DATE: OCTOBER 2024
 SOURCE: NC ONEMAP

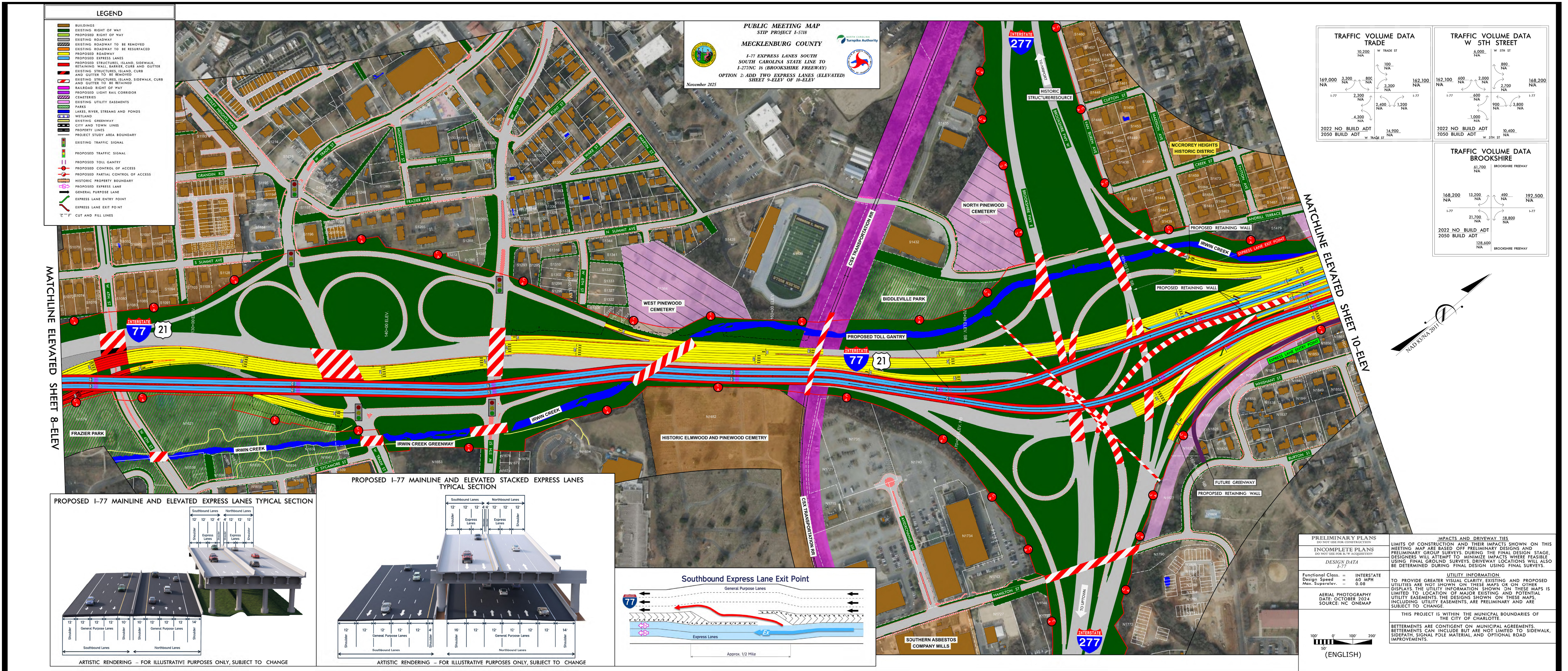
UTILITY INFORMATION
 TO PROVIDE GREATER VISUAL CLARITY, EXISTING AND PROPOSED UTILITIES ARE NOT SHOWN ON THESE MAPS OR ON OTHER DISPLAYS. THE UTILITY INFORMATION SHOWN ON THESE MAPS IS LIMITED TO LOCATION OF MAJOR EXISTING AND POTENTIAL UTILITY EASEMENTS. THE DESIGNS SHOWN ON THESE MAPS, INCLUDING UTILITY EASEMENTS, ARE PRELIMINARY AND ARE SUBJECT TO CHANGE.

THIS PROJECT IS WITHIN THE MUNICIPAL BOUNDARIES OF THE CITY OF CHARLOTTE.

BETTERMENTS ARE CONTINGENT ON MUNICIPAL AGREEMENTS. BETTERMENTS CAN INCLUDE BUT ARE NOT LIMITED TO SIDEWALK, SIDEPAATH, SIGNAL POLE MATERIAL, AND OPTIONAL ROAD IMPROVEMENTS.

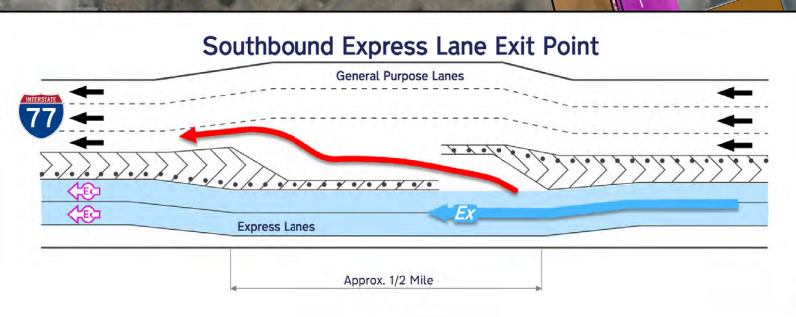
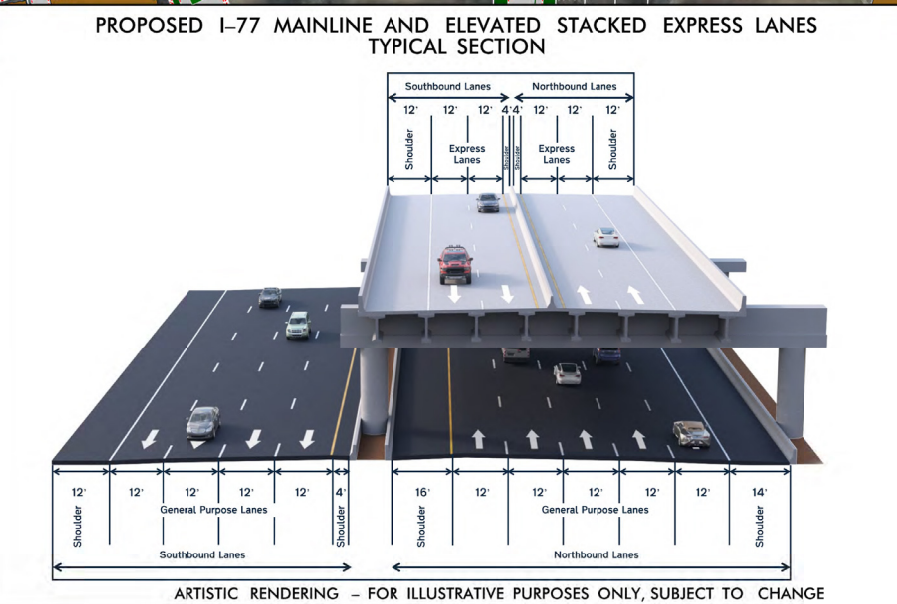
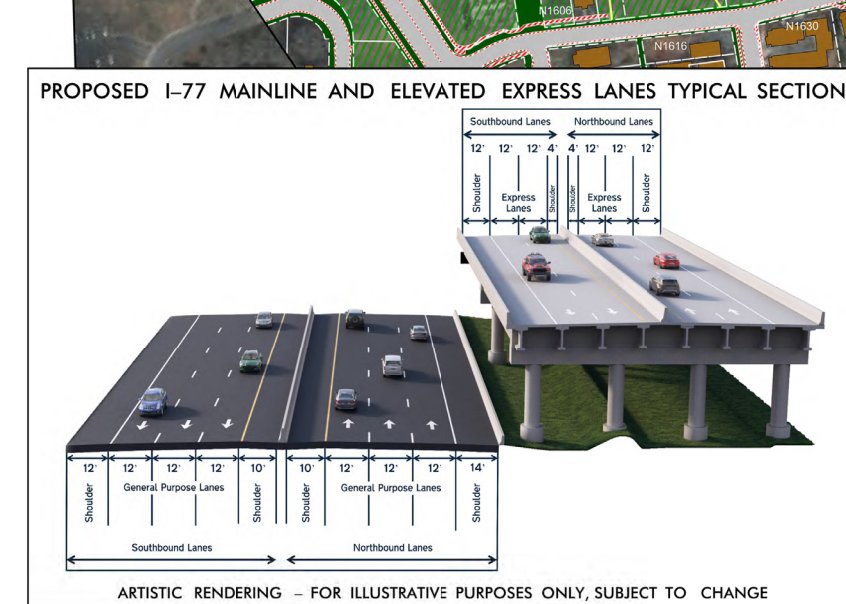
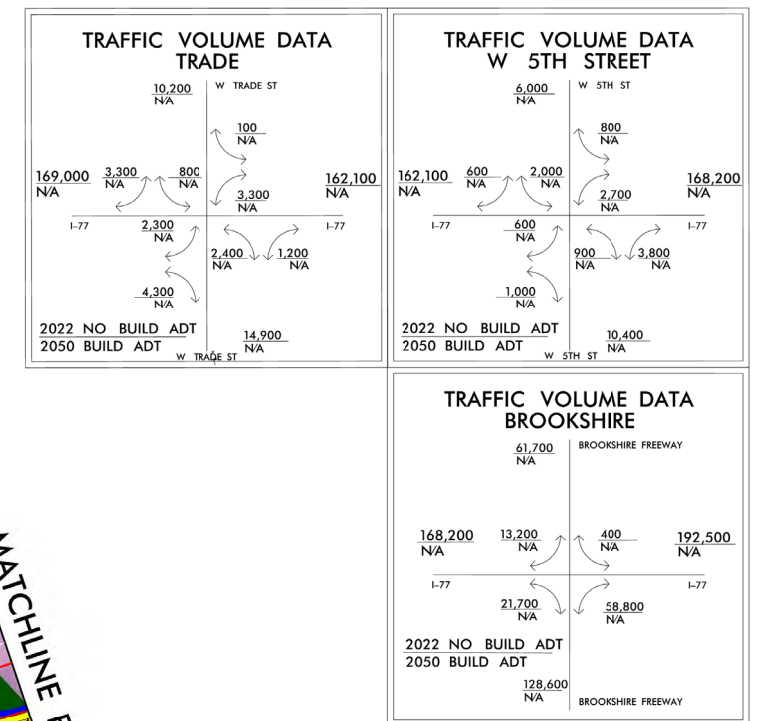
(ENGLISH)

AT-GRADE



PUBLIC MEETING MAP
STIP PROJECT I-5718
MECKLENBURG COUNTY
 I-77 EXPRESS LANES SOUTH
 SOUTH CAROLINA STATE LINE TO
 I-277/NC 16 (BROOKSHIRE FREEWAY)
 OPTION 2: ADD TWO EXPRESS LANES (ELEVATED)
 SHEET 9-ELEV OF 10-ELEV
 November 2025

- LEGEND**
- BUILDINGS
 - EXISTING RIGHT OF WAY
 - PROPOSED RIGHT OF WAY
 - EXISTING ROADWAY
 - EXISTING ROADWAY TO BE RESURFACED
 - PROPOSED EXPRESS LANES
 - PROPOSED STRUCTURES, ISLAND, SIDEWALK, RETAINING WALL, BARRIER, CURB AND GUTTER
 - EXISTING STRUCTURES, ISLAND, SIDEWALK, CURB AND GUTTER TO BE REMOVED
 - RAILROAD RIGHT OF WAY
 - PROPOSED LIGHT RAIL CORRIDOR
 - CEMETERIES
 - EXISTING UTILITY EASEMENTS
 - PARKS
 - LAKES, RIVERS, STREAMS AND PONDS
 - WETLAND
 - EXISTING GREENWAY
 - CITY AND TOWN LINES
 - PROPERTY LINES
 - PROJECT STUDY AREA BOUNDARY
 - EXISTING TRAFFIC SIGNAL
 - PROPOSED TRAFFIC SIGNAL
 - PROPOSED TOLL GANTRY
 - PROPOSED CONTROL OF ACCESS
 - HISTORIC PROPERTY BOUNDARY
 - PROPOSED EXPRESS LANE
 - GENERAL PURPOSE LANE
 - EXPRESS LANE ENTRY POINT
 - EXPRESS LANE EXIT POINT
 - CUT AND FILL LINES



PRELIMINARY PLANS
 DO NOT USE FOR CONSTRUCTION

INCOMPLETE PLANS
 DO NOT USE FOR R/W ACQUISITION

DESIGN DATA
 I-77

Functional Class. = INTERSTATE
 Design Speed = 60 MPH
 Max. Superelev. = 0.08

AERIAL PHOTOGRAPHY
 DATE: OCTOBER 2024
 SOURCE: NC ONEMAP

UTILITIES INFORMATION
 TO PROVIDE GREATER VISUAL CLARITY, EXISTING AND PROPOSED UTILITIES ARE NOT SHOWN ON THESE MAPS OR ON OTHER DISPLAYS. THE UTILITY INFORMATION SHOWN ON THESE MAPS IS LIMITED TO LOCATION OF MAJOR EXISTING AND POTENTIAL UTILITY EASEMENTS. THE DESIGNS SHOWN ON THESE MAPS, INCLUDING UTILITY EASEMENTS, ARE PRELIMINARY AND ARE SUBJECT TO CHANGE.

THIS PROJECT IS WITHIN THE MUNICIPAL BOUNDARIES OF THE CITY OF CHARLOTTE.

BETTERMENTS ARE CONTINGENT ON MUNICIPAL AGREEMENTS. BETTERMENTS CAN INCLUDE BUT ARE NOT LIMITED TO SIDEWALK, SIDEPAATH, SIGNAL POLE MATERIAL, AND OPTIONAL ROAD IMPROVEMENTS.

100' 0' 100' 200'
 50'
 (ENGLISH)

ELEVATED

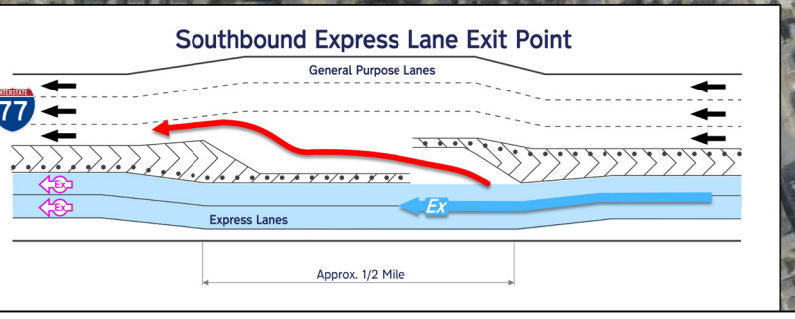
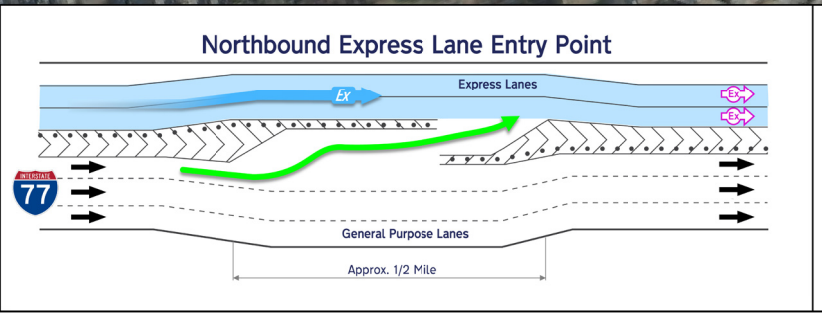
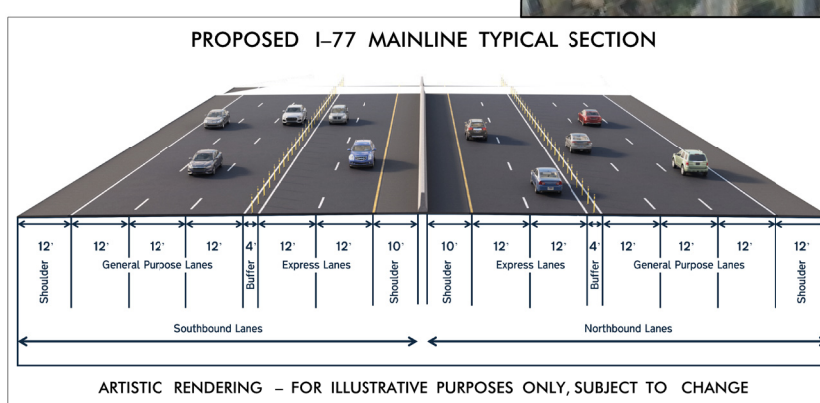
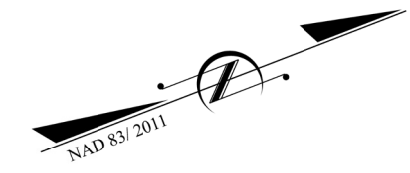
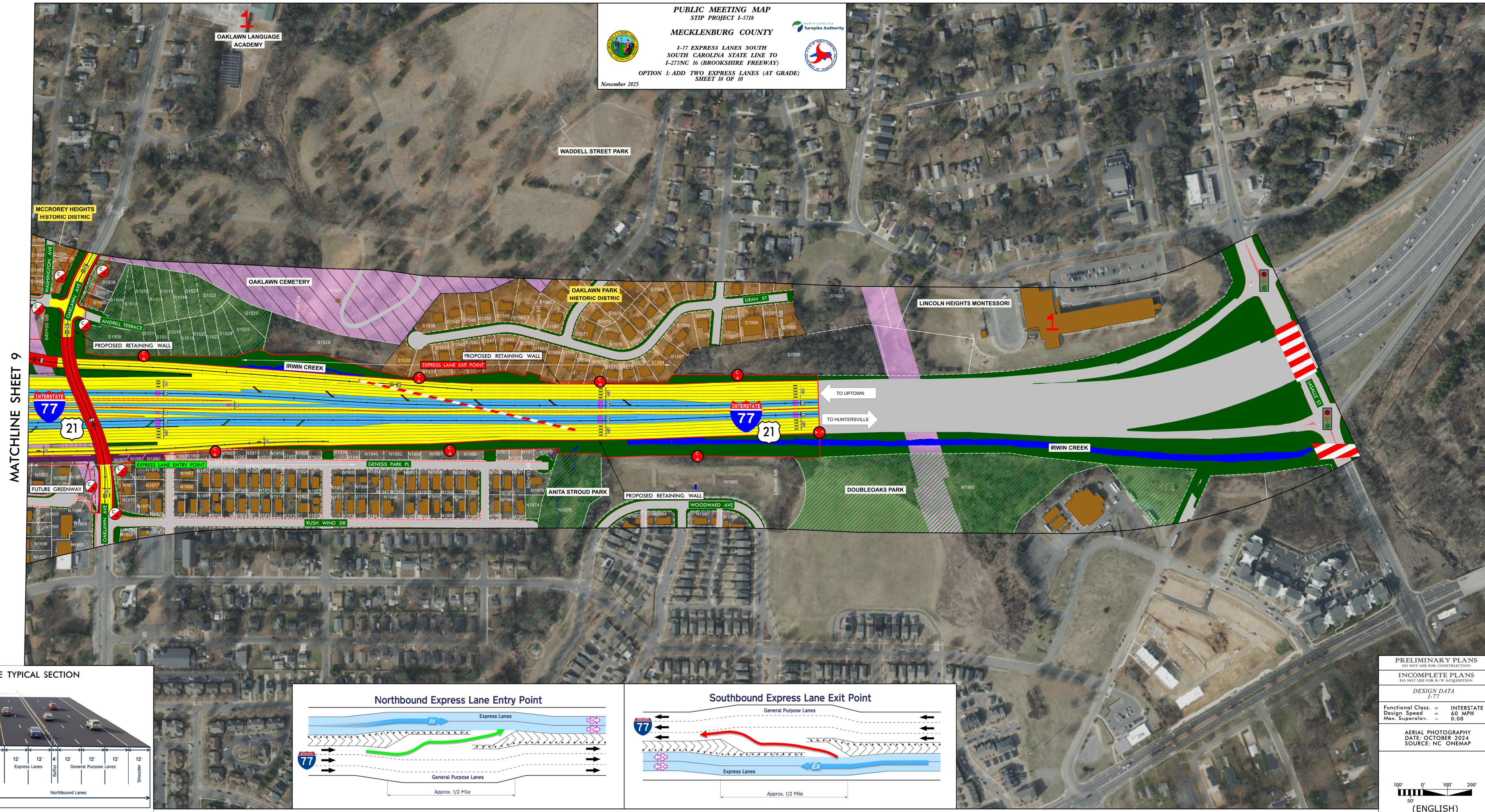
Trade Rendering - Elevated



Final designs are still under consideration and items such as noise walls, landscaping, etc. have not been determined. This artistic rendering is for illustrative purposes only.

TRADE RENDERING - ELEVATED

LEGEND	
	BUILDINGS
	EXISTING RIGHT OF WAY
	PROPOSED RIGHT OF WAY
	EXISTING ROADWAY
	EXISTING ROADWAY TO BE REMOVED
	PROPOSED ROADWAY
	PROPOSED EXPRESS LANES
	PROPOSED STRUCTURES, ISLAND, SIDEWALK, RETAINING WALL, BARRIER, CURB AND GUTTER AND GUTTER TO BE REMOVED
	EXISTING STRUCTURES, ISLAND, SIDEWALK, CURB AND GUTTER TO BE RETAINED
	RAILROAD RIGHT OF WAY
	PROPOSED LIGHT RAIL CORRIDOR
	CEMETERIES
	EXISTING UTILITY EASEMENTS
	PARKS
	LAKES, RIVER, STREAMS AND PONDS
	WETLAND
	EXISTING GREENWAY
	CITY AND TOWN LINES
	PROPERTY LINES
	PROJECT STUDY AREA BOUNDARY
	EXISTING TRAFFIC SIGNAL
	PROPOSED TRAFFIC SIGNAL
	PROPOSED TOLL GANTY
	PROPOSED CONTROL OF ACCESS
	PROPOSED PARTIAL CONTROL OF ACCESS
	HISTORIC PROPERTY BOUNDARY
	PROPOSED EXPRESS LANE
	GENERAL PURPOSE LANE
	EXPRESS LANE ENTRY POINT
	EXPRESS LANE EXIT POINT
	CUT AND FILL LINES



PRELIMINARY PLANS		LIMITS OF CONSTRUCTION AND THEIR IMPACTS SHOWN ON THIS MEETING MAP ARE BASED OFF PRELIMINARY DESIGNS AND PRELIMINARY GROUP SURVEYS DURING THE FINAL DESIGN STAGE. DESIGNERS WILL ATTEMPT TO MINIMIZE IMPACTS WHERE FEASIBLE USING FINAL GROUND SURVEYS. DRIVEWAY LOCATIONS WILL ALSO BE DETERMINED DURING FINAL DESIGN USING FINAL SURVEYS.	
DO NOT USE FOR CONSTRUCTION			
INCOMPLETE PLANS			
DO NOT USE FOR R/W ACQUISITION			
DESIGN DATA			
Functional Class.	= INTERSTATE	UTILITY INFORMATION	TO PROVIDE GREATER VISUAL CLARITY, EXISTING AND PROPOSED UTILITIES ARE NOT SHOWN ON THESE MAPS OR ON OTHER DISPLAYS. THE UTILITY INFORMATION SHOWN ON THESE MAPS IS LIMITED TO LOCATION OF MAJOR EXISTING AND POTENTIAL UTILITY EASEMENTS. THE DESIGNS SHOWN ON THESE MAPS, INCLUDING UTILITY EASEMENTS, ARE PRELIMINARY AND ARE SUBJECT TO CHANGE.
Design Speed	= 60 MPH		
Max. Superelev.	= 0.08		
AERIAL PHOTOGRAPHY DATE: OCTOBER 2024 SOURCE: NC ONEMAP			
THIS PROJECT IS WITHIN THE MUNICIPAL BOUNDARIES OF THE CITY OF CHARLOTTE.			
BETTERMENTS ARE CONTINGENT ON MUNICIPAL AGREEMENTS. BETTERMENTS CAN INCLUDE BUT ARE NOT LIMITED TO SIDEWALK, SIDEPAATH, SIGNAL POLE MATERIAL, AND OPTIONAL ROAD IMPROVEMENTS.			
100' 0' 100' 200' 50'		(ENGLISH)	

AT-GRADE

