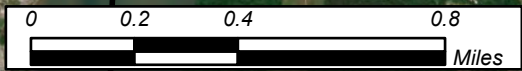
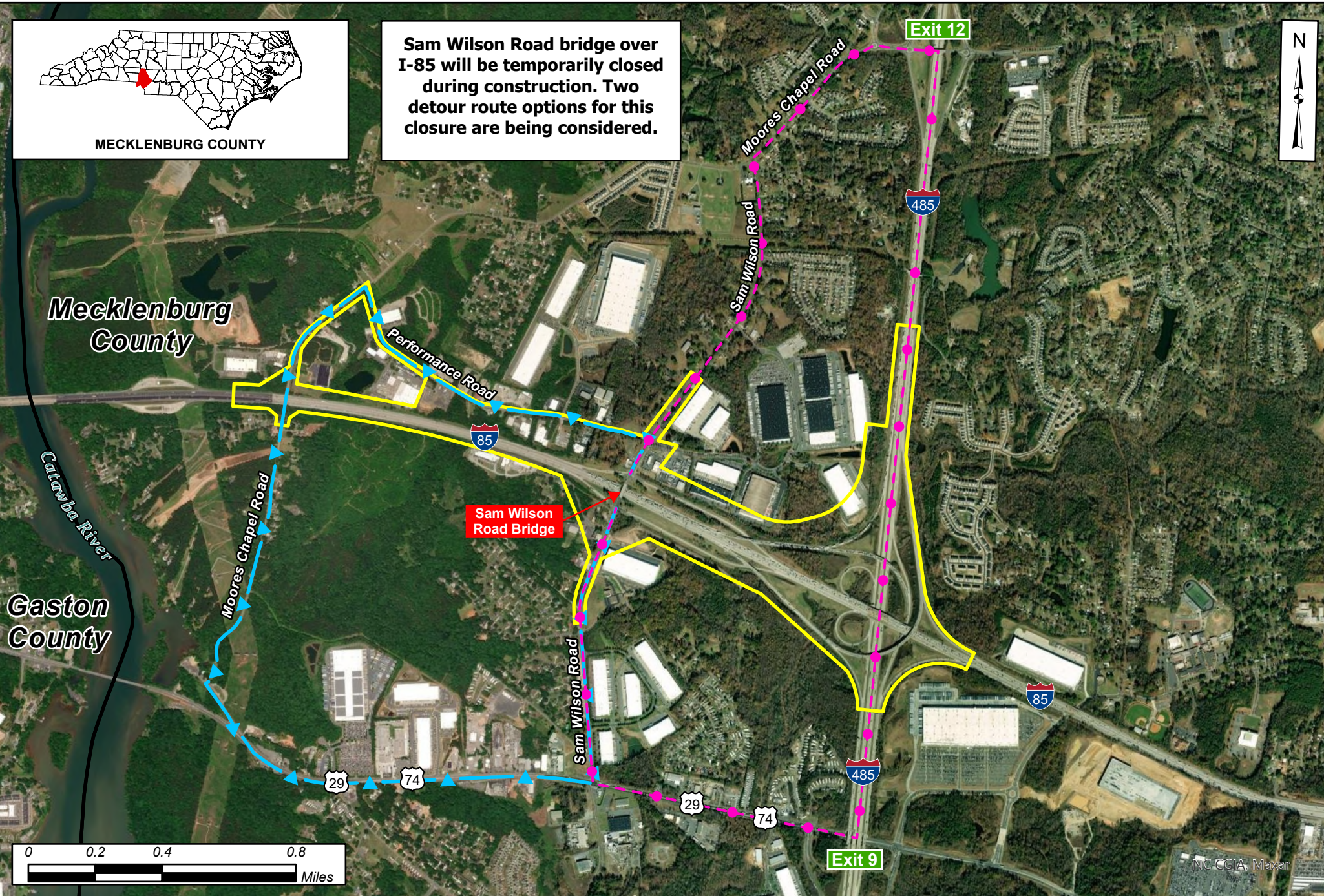


MECKLENBURG COUNTY

Sam Wilson Road bridge over I-85 will be temporarily closed during construction. Two detour route options for this closure are being considered.



Mead & Hunt
Mead & Hunt
111 E Hargett Street
Raleigh, NC 27601
Tel. 919.714.8670
www.meadhunt.com



I-85/I-485 INTERCHANGE IMPROVEMENTS
WEST OF CHARLOTTE
MECKLENBURG COUNTY

TIP NO.: I-6016
WBS NO.: 47968.1.1

DATE: 12/20/2023

PROPOSED DETOUR MAP

- LEGEND**
- Project Study Area
 - West Route Detour
 - County Boundaries
 - East Route Detour

Sources: ESRI, USGS, County and Municipality Data

NC CGIA, Maxar