

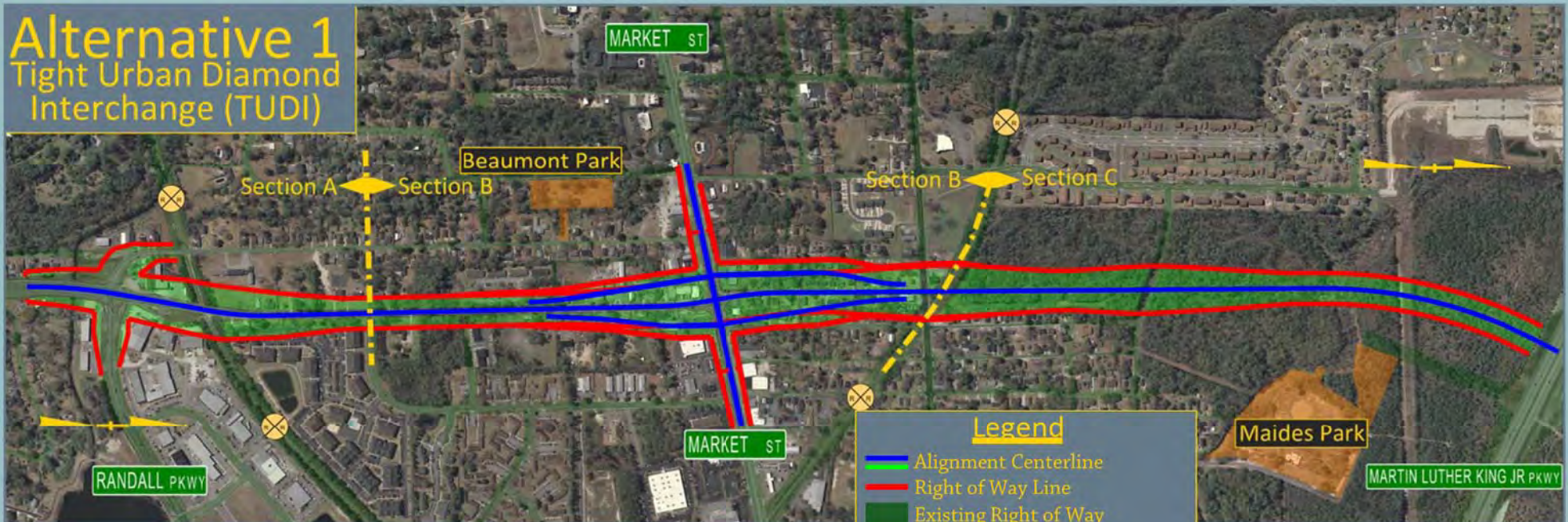
**APPENDIX A**  
**CONCEPTUAL ALTERNATIVE**  
**ALIGNMENTS**

---

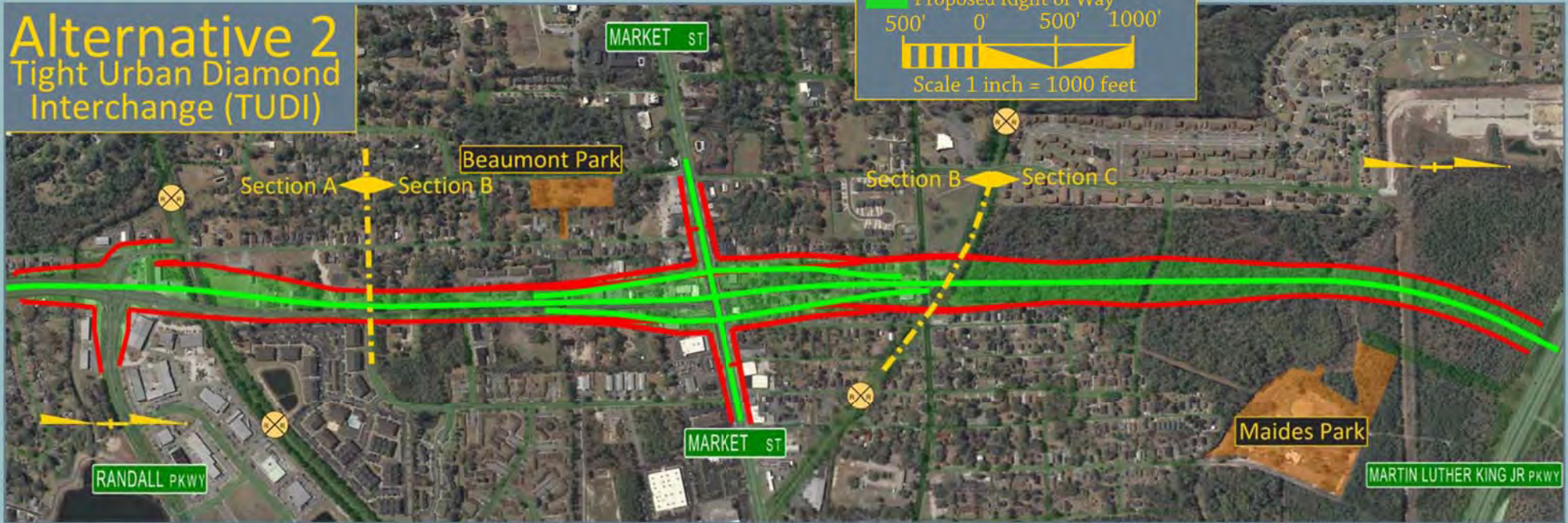
## **Appendix A1**

### **Alignments with TUDI Option**

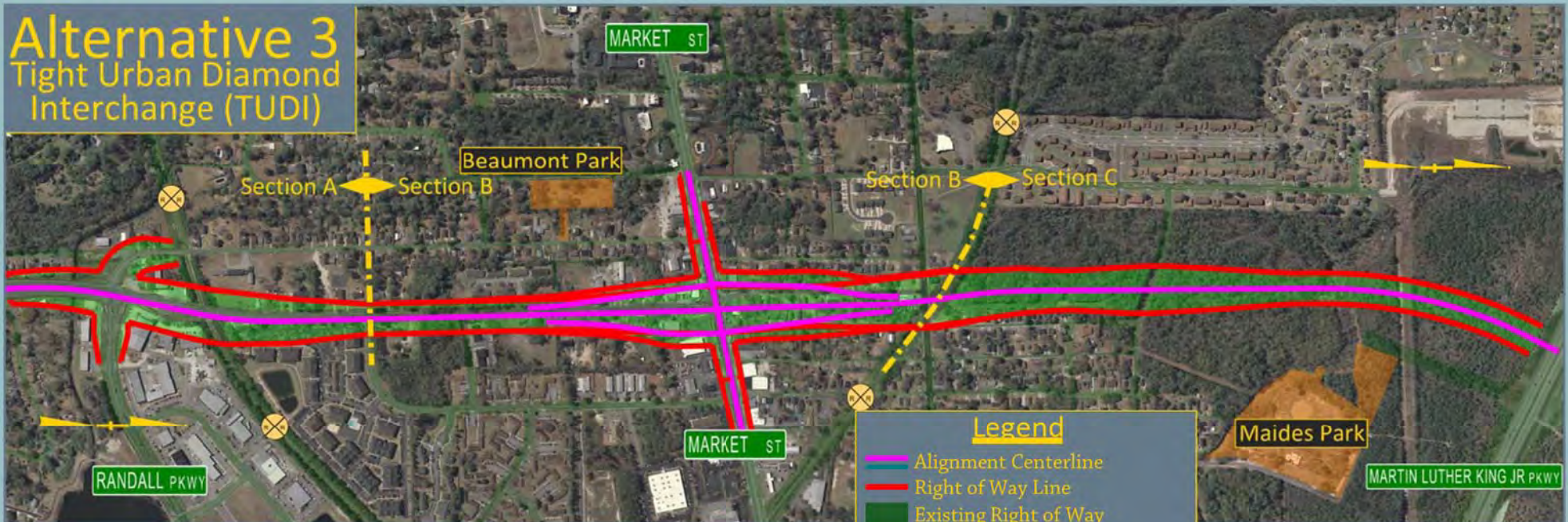
# Alternative 1 Tight Urban Diamond Interchange (TUDI)



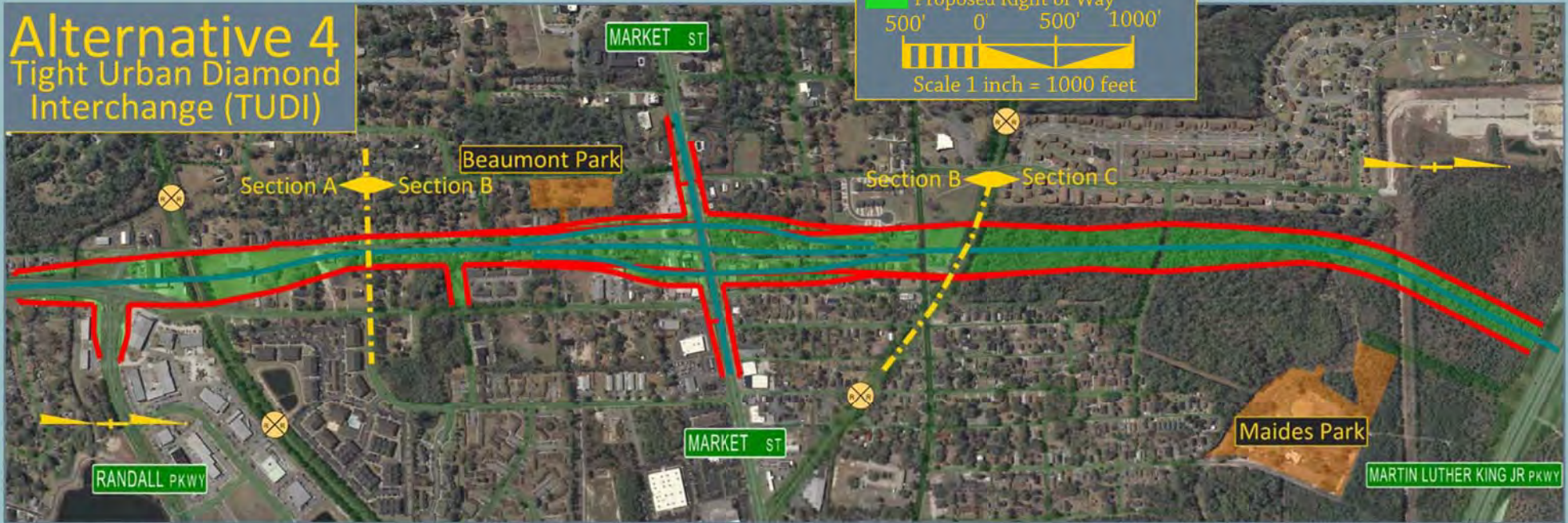
# Alternative 2 Tight Urban Diamond Interchange (TUDI)



# Alternative 3 Tight Urban Diamond Interchange (TUDI)



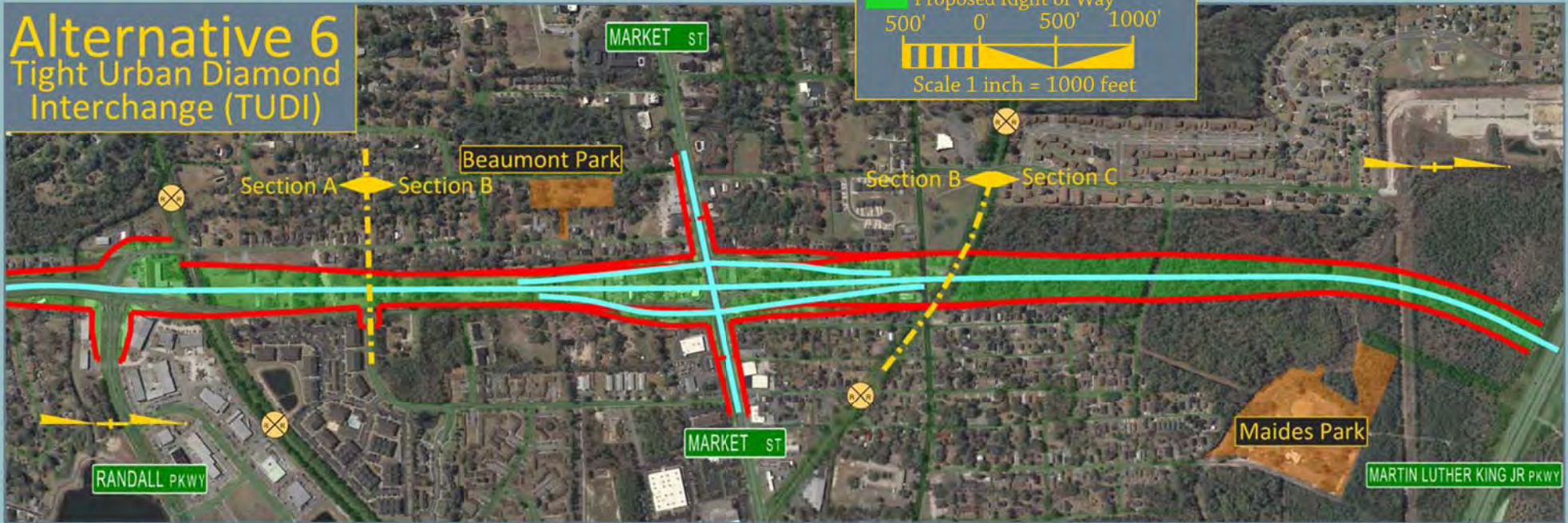
# Alternative 4 Tight Urban Diamond Interchange (TUDI)



# Alternative 5 Tight Urban Diamond Interchange (TUDI)



# Alternative 6 Tight Urban Diamond Interchange (TUDI)



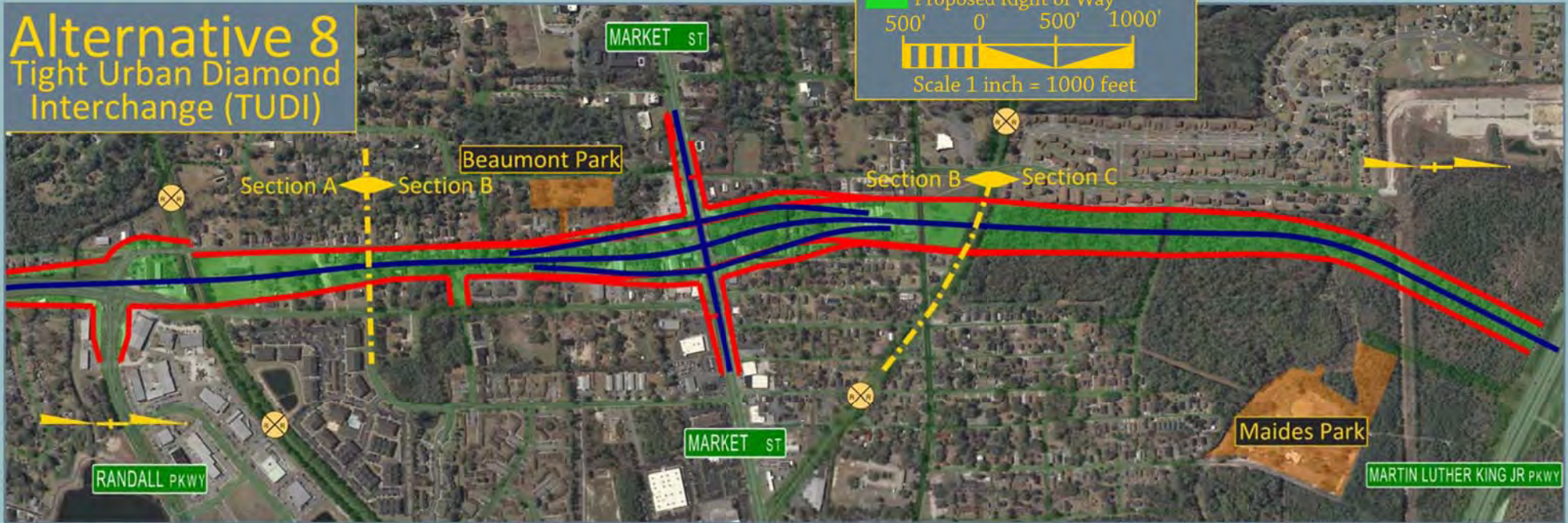
# Alternative 7

## Tight Urban Diamond Interchange (TUDI)



# Alternative 8

## Tight Urban Diamond Interchange (TUDI)

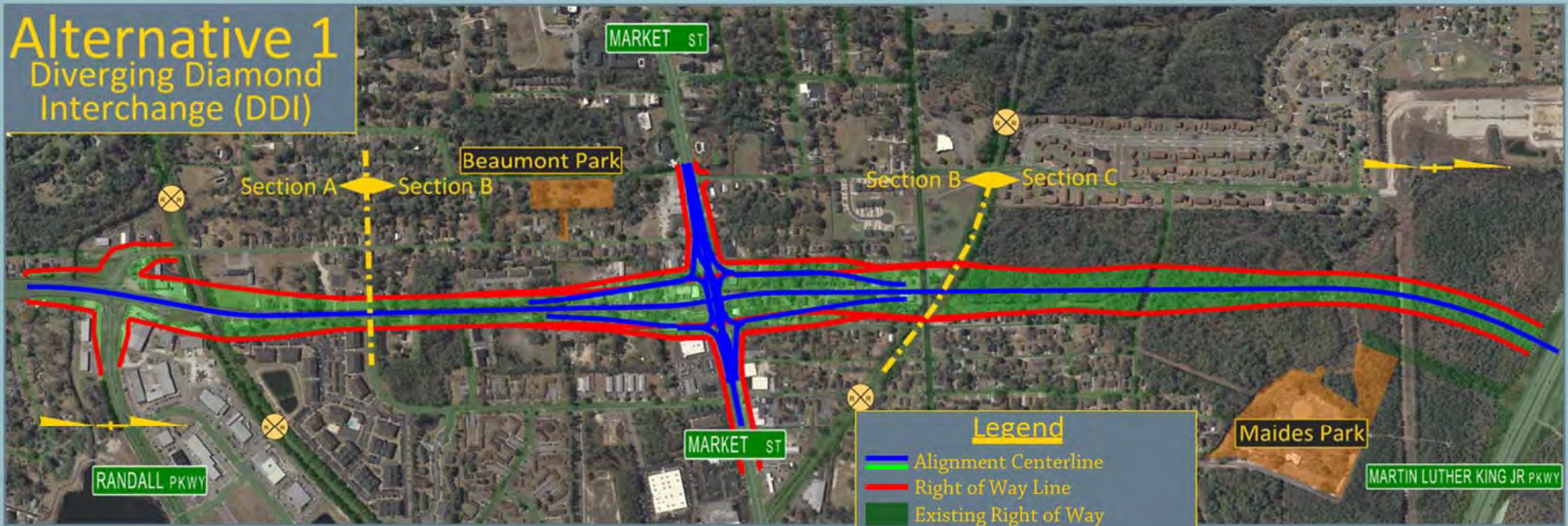


## **Appendix A2**

### **Alignments with DDI Option**

# Alternative 1

## Diverging Diamond Interchange (DDI)



# Alternative 2

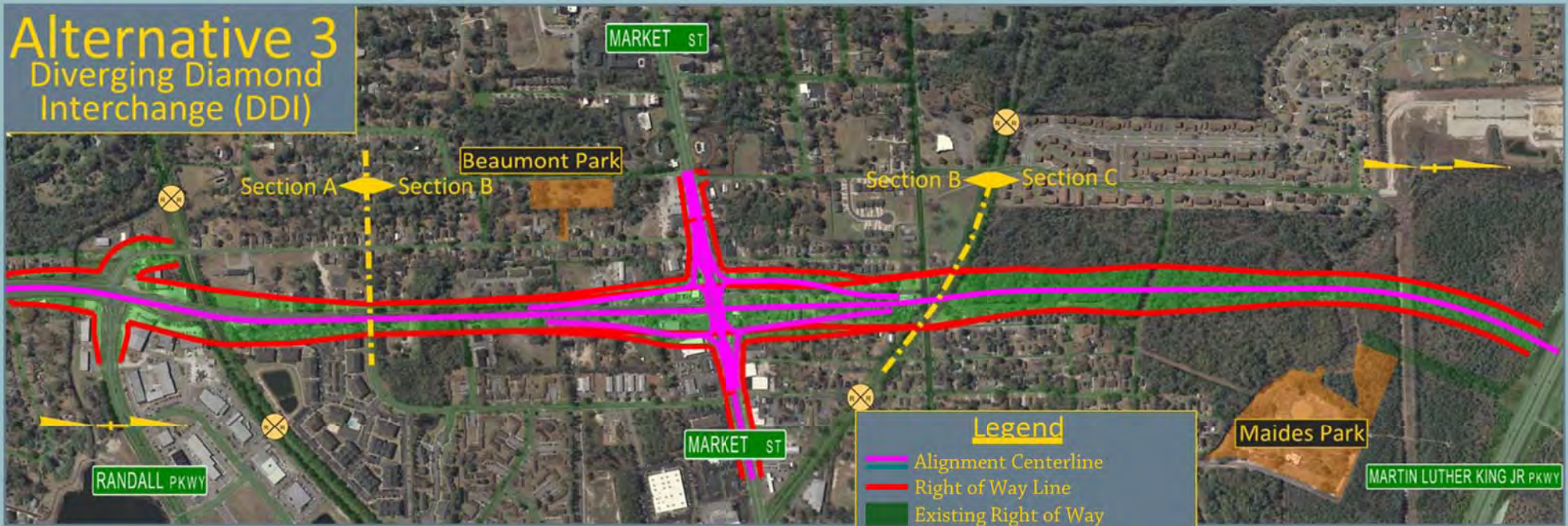
## Diverging Diamond Interchange (DDI)





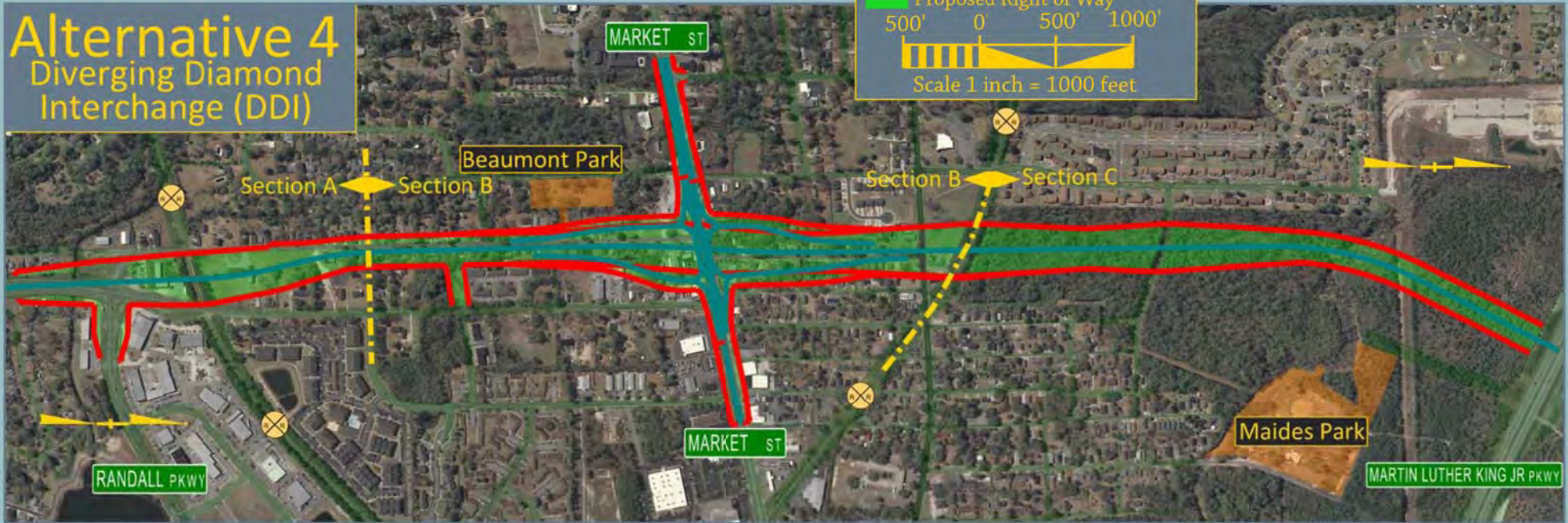
# Alternative 3

## Diverging Diamond Interchange (DDI)



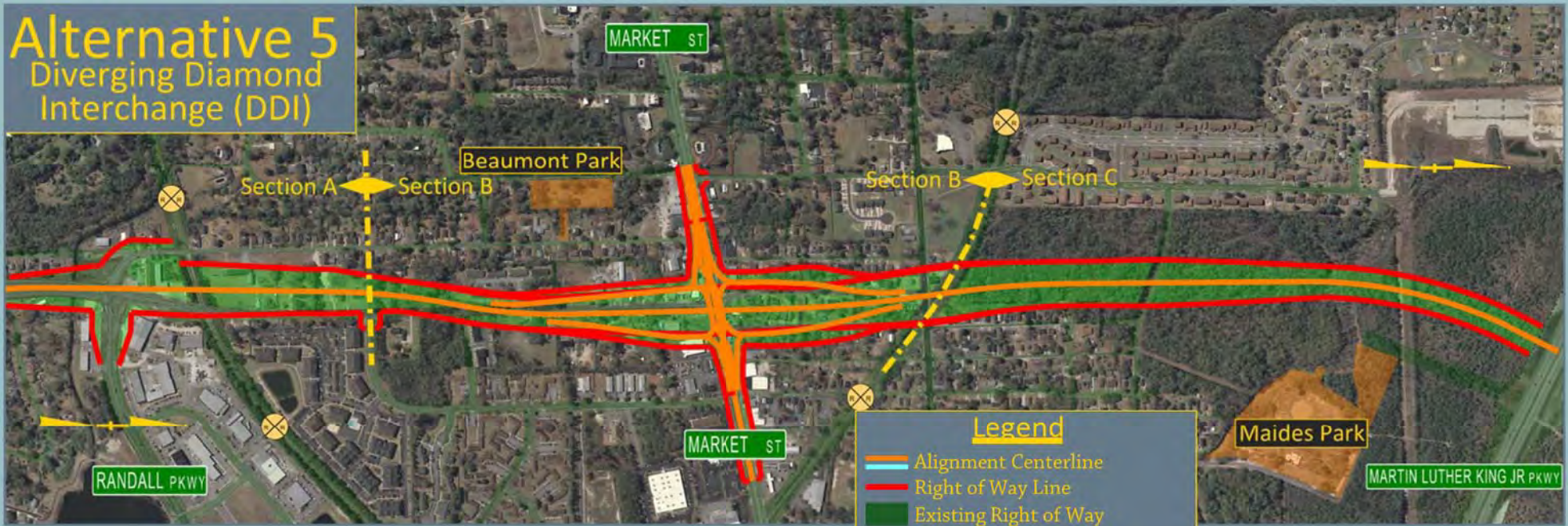
# Alternative 4

## Diverging Diamond Interchange (DDI)



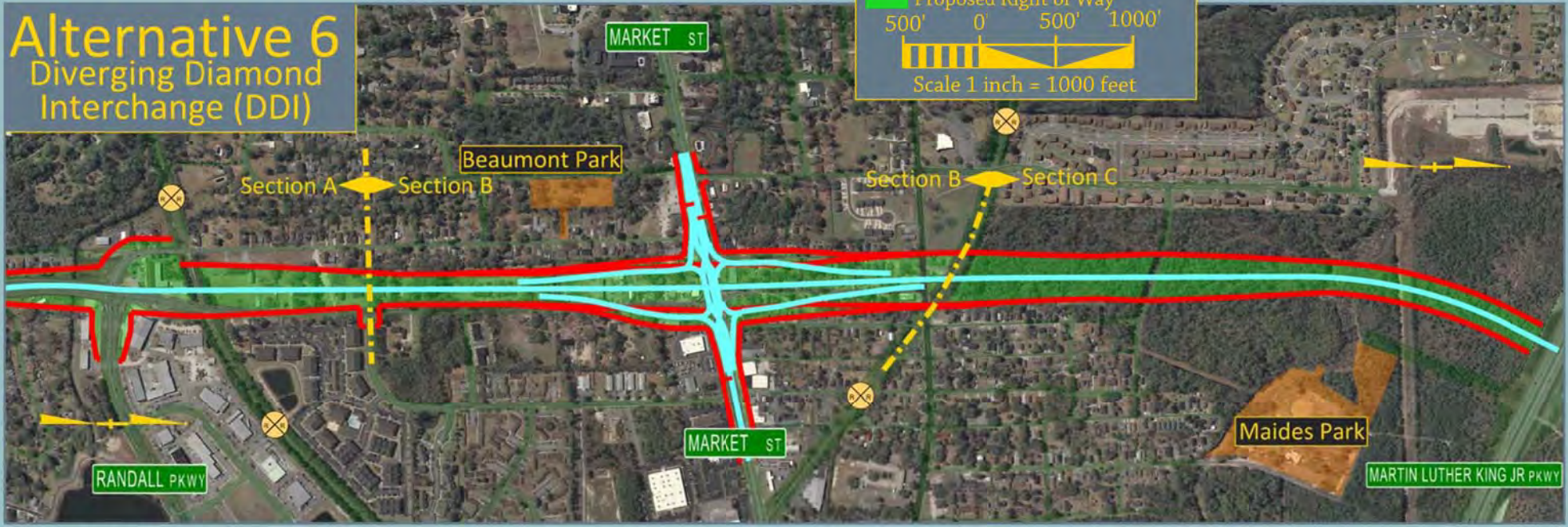
# Alternative 5

## Diverging Diamond Interchange (DDI)



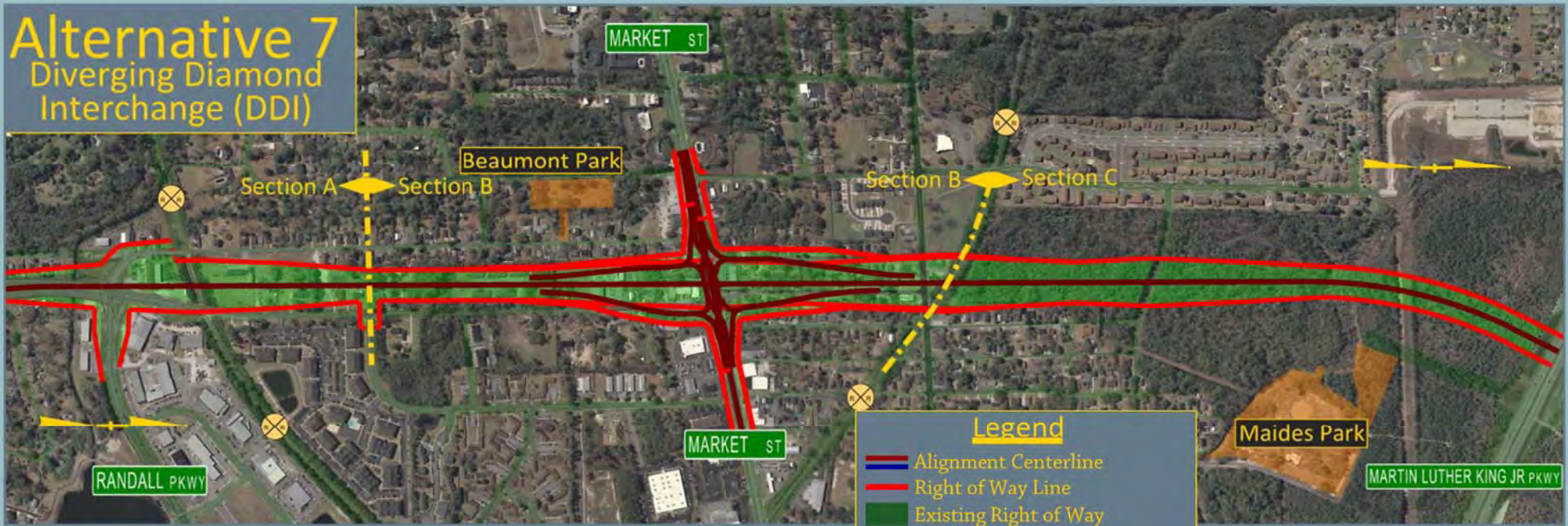
# Alternative 6

## Diverging Diamond Interchange (DDI)



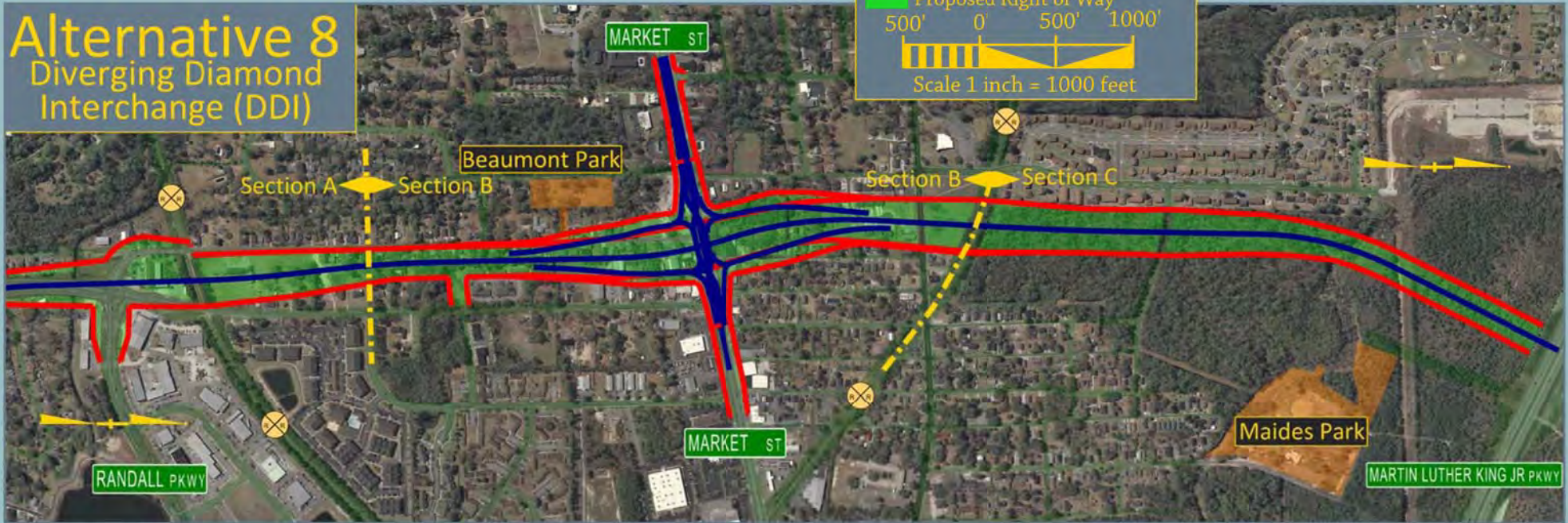
# Alternative 7

## Diverging Diamond Interchange (DDI)



# Alternative 8

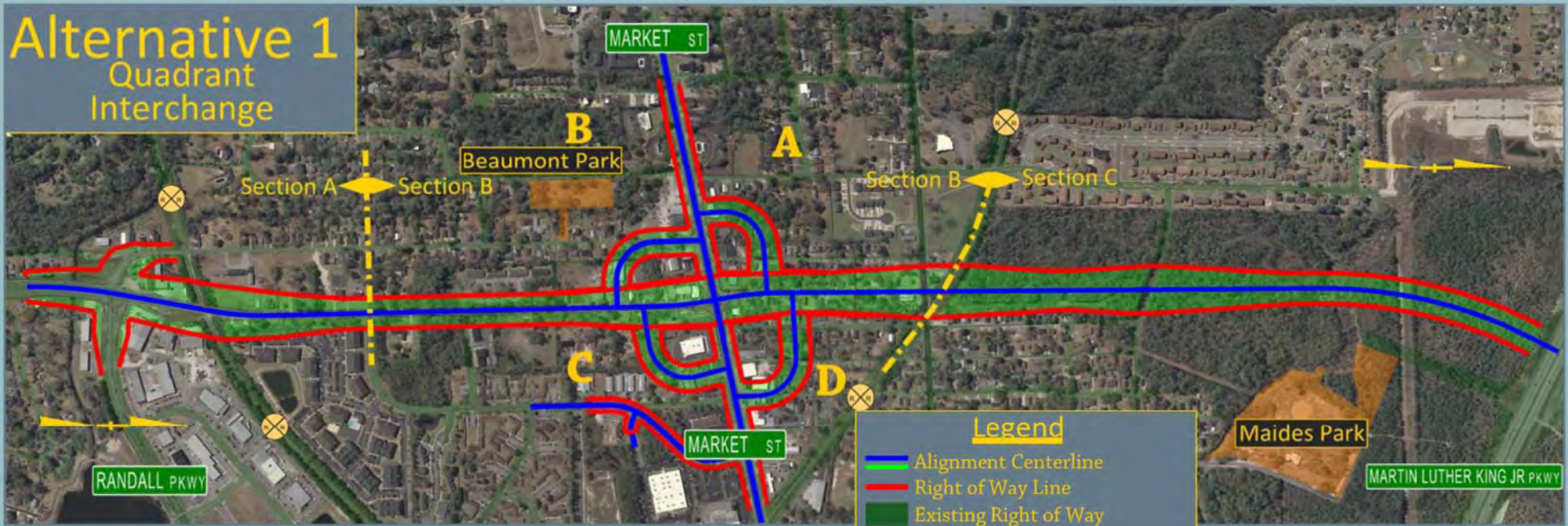
## Diverging Diamond Interchange (DDI)



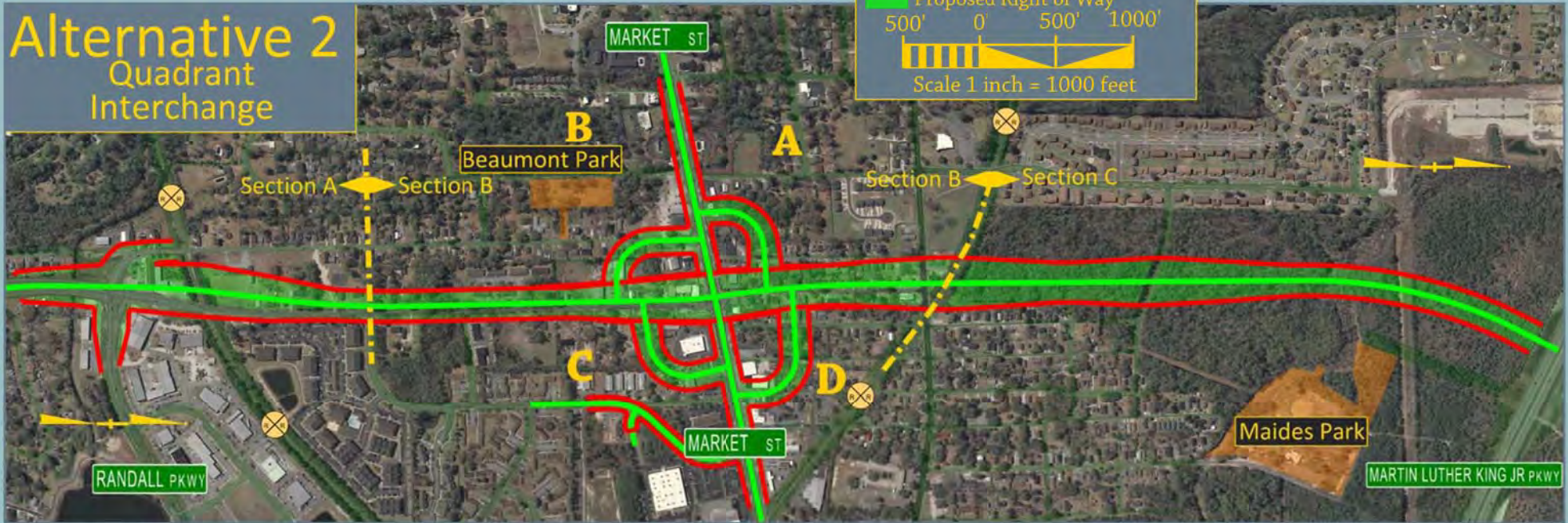
## **Appendix A3**

### **Alignments with Quadrant Interchange Option**

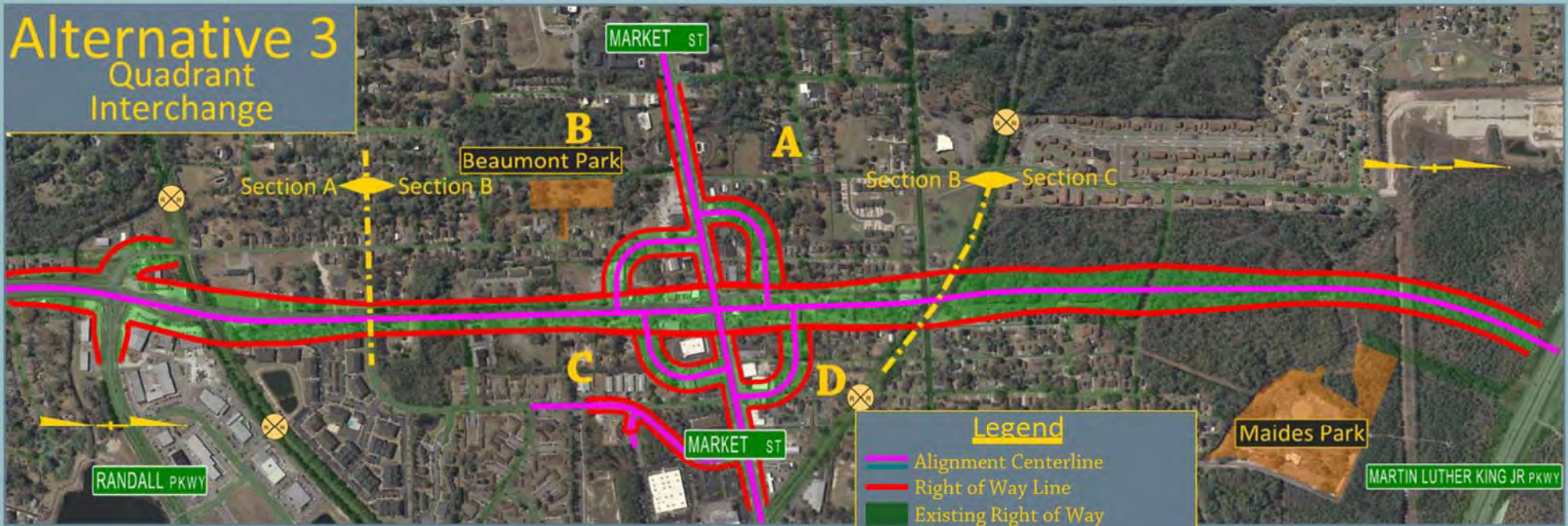
# Alternative 1 Quadrant Interchange



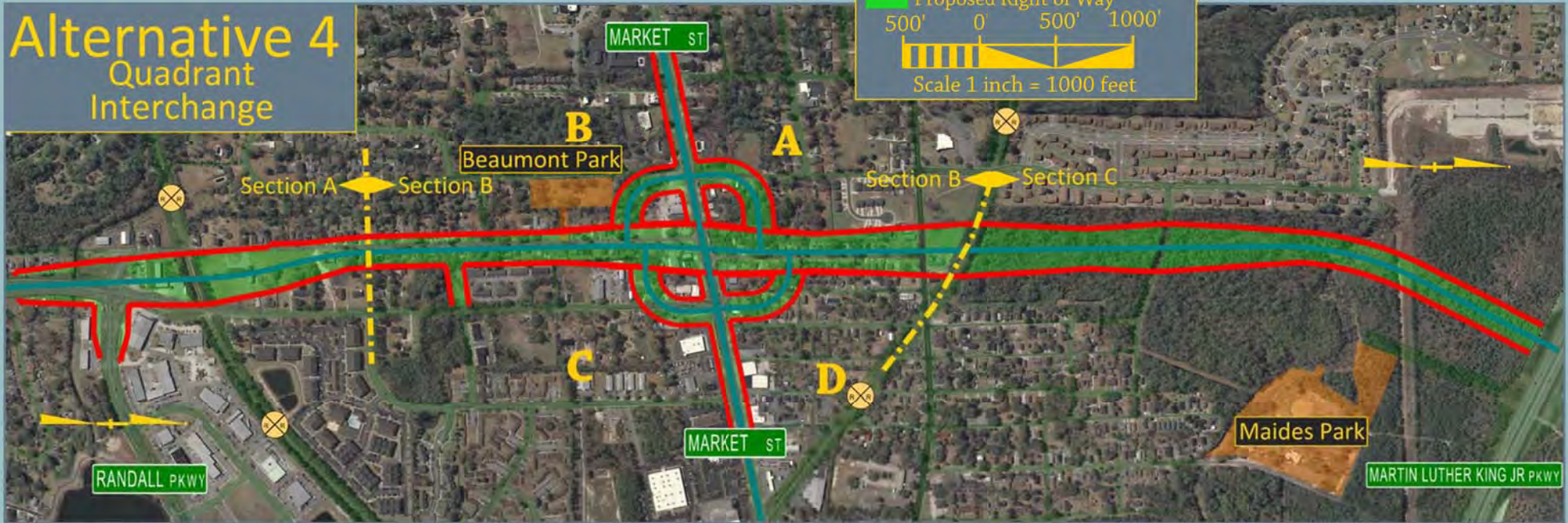
# Alternative 2 Quadrant Interchange



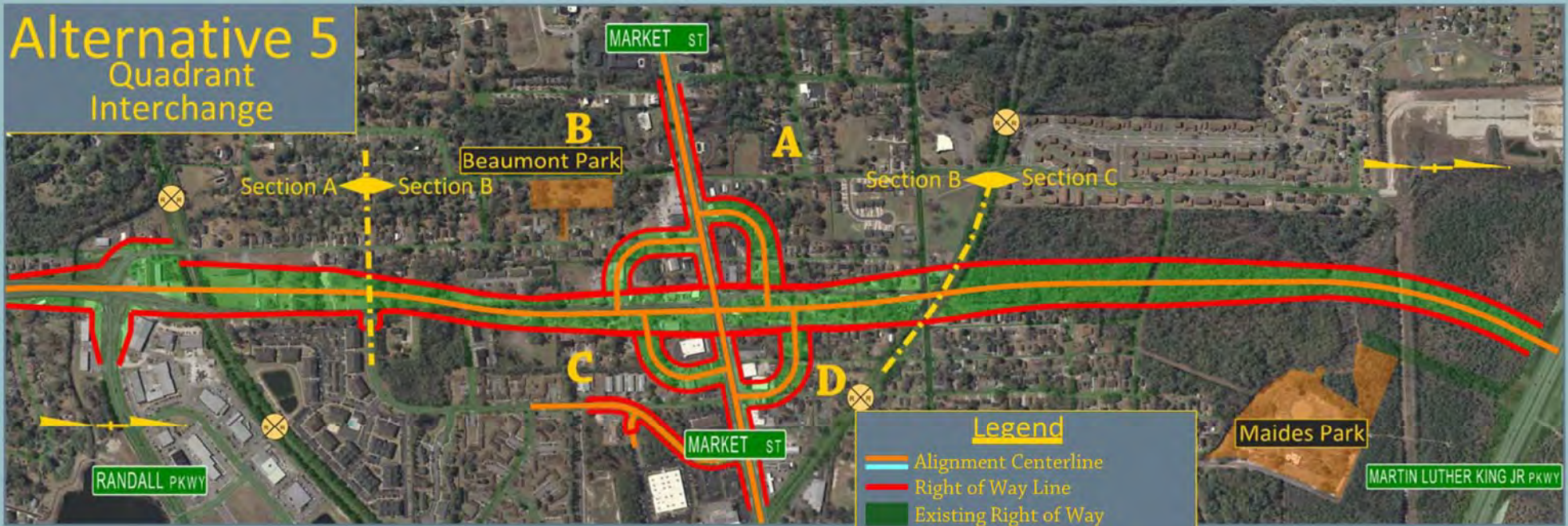
# Alternative 3 Quadrant Interchange



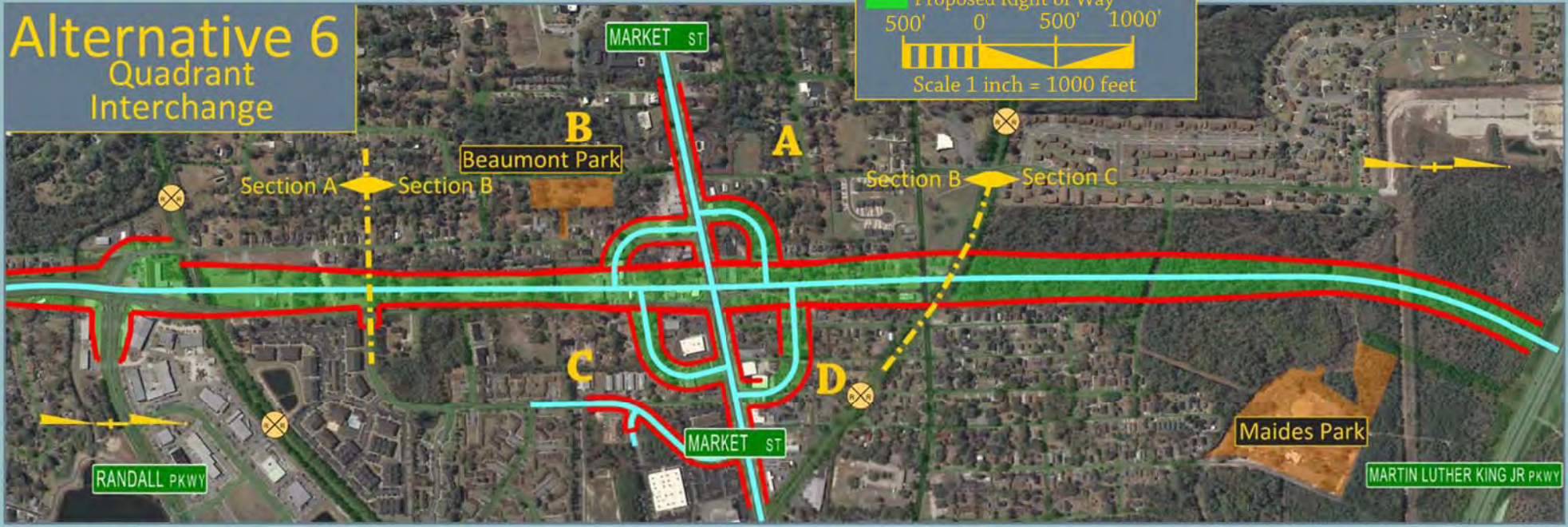
# Alternative 4 Quadrant Interchange



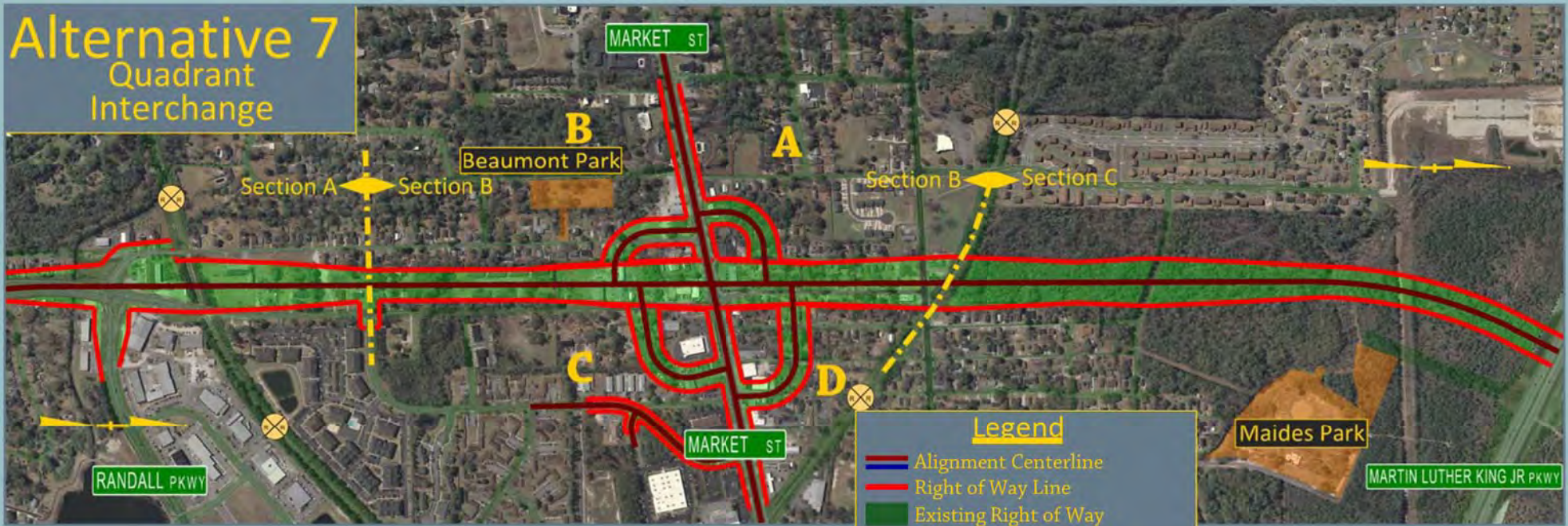
# Alternative 5 Quadrant Interchange



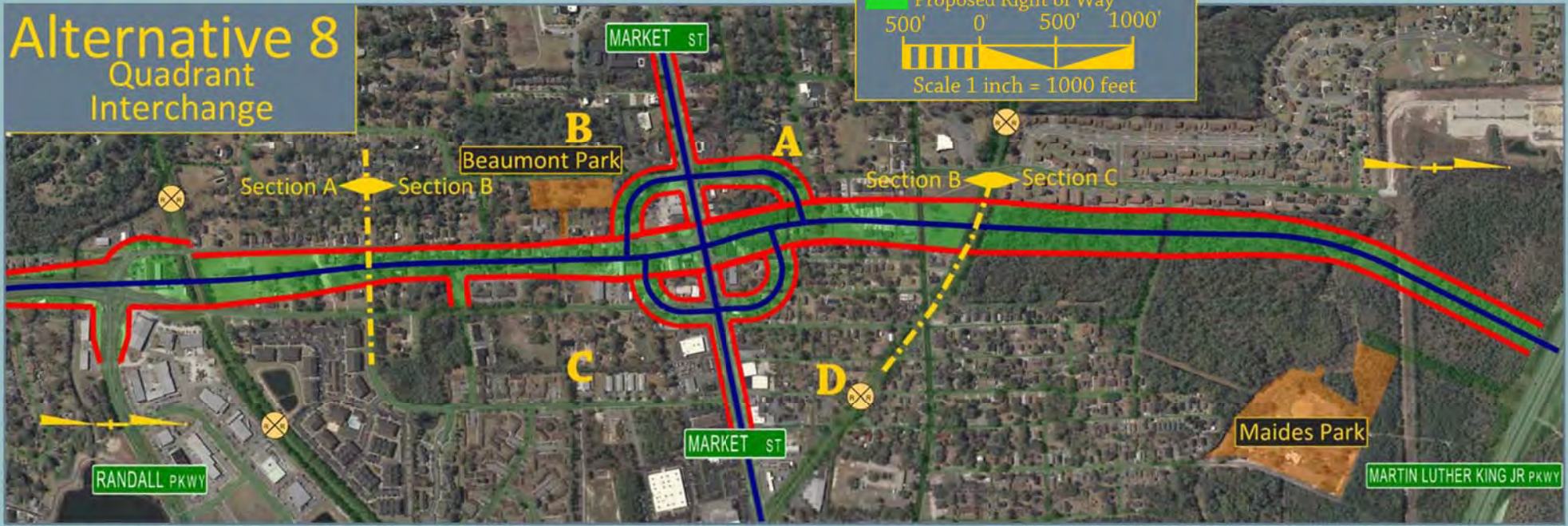
# Alternative 6 Quadrant Interchange



# Alternative 7 Quadrant Interchange



# Alternative 8 Quadrant Interchange



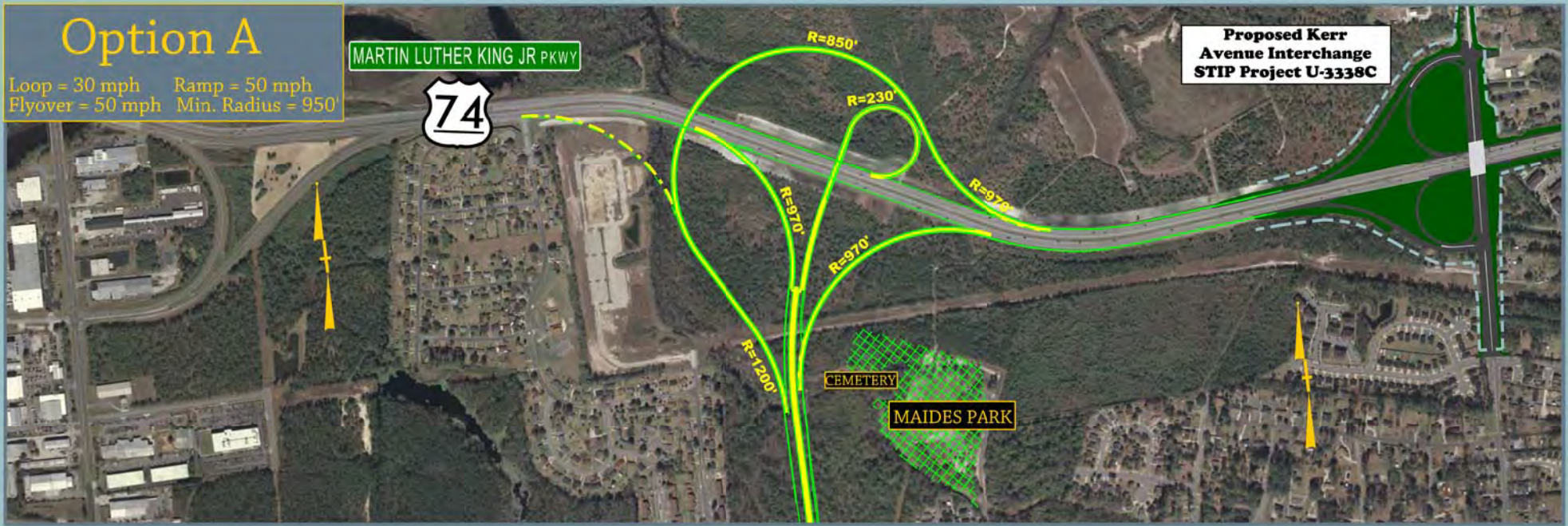


## **Appendix A4**

### **Martin Luther King, Jr. Interchange Options**

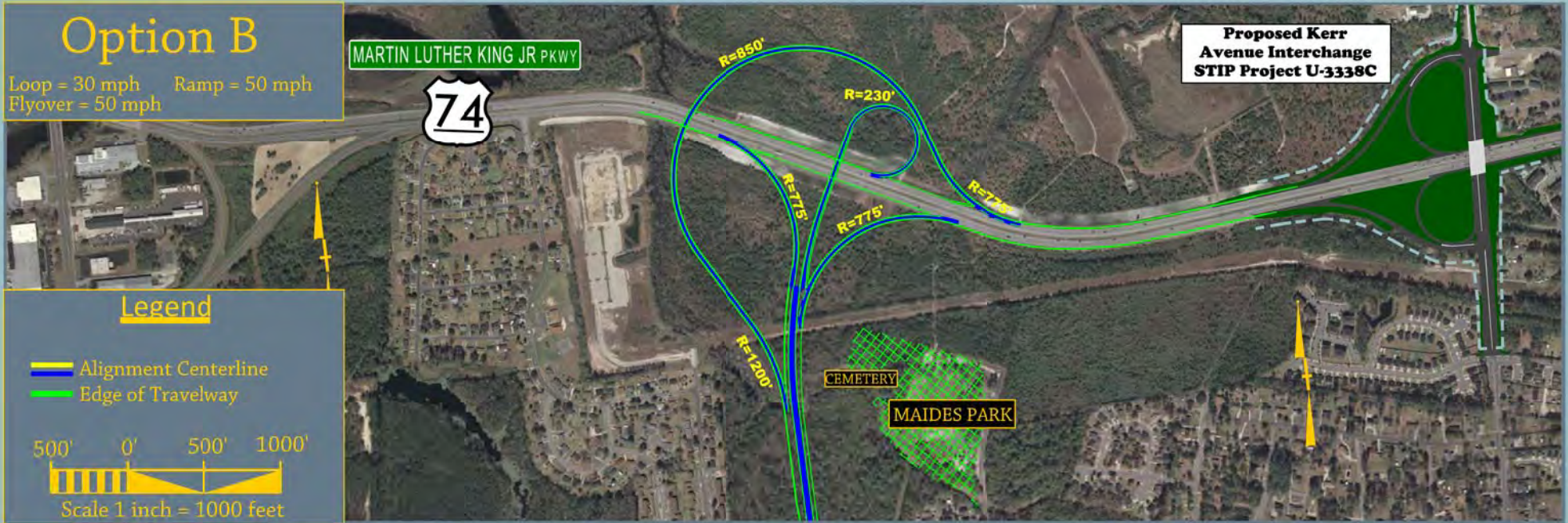
# Option A

Loop = 30 mph Ramp = 50 mph  
Flyover = 50 mph Min. Radius = 950'



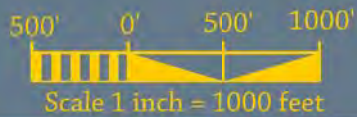
# Option B

Loop = 30 mph Ramp = 50 mph  
Flyover = 50 mph



## Legend

- Alignment Centerline
- Edge of Travelway



North Carolina  
Department of Transportation

Date: November 2011



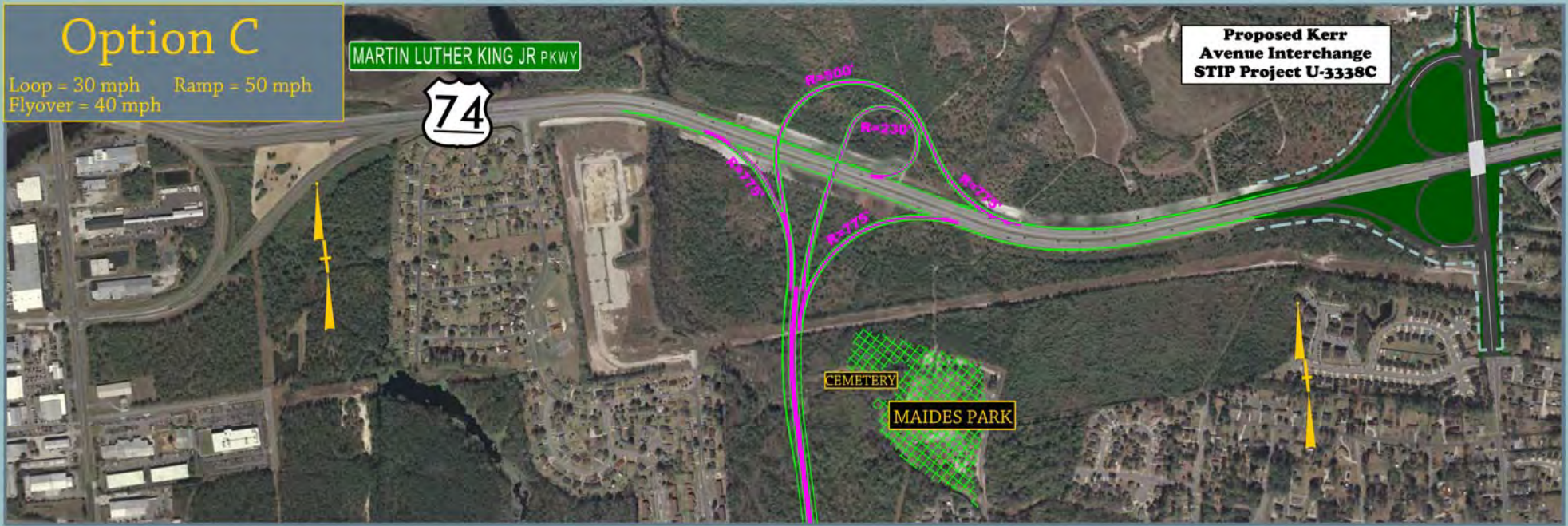
Independence Boulevard Extension Project  
New Hanover County, NC  
STIP U-4434



Figure 11a  
Conceptual Designs  
MLK Jr. Parkway Interchange

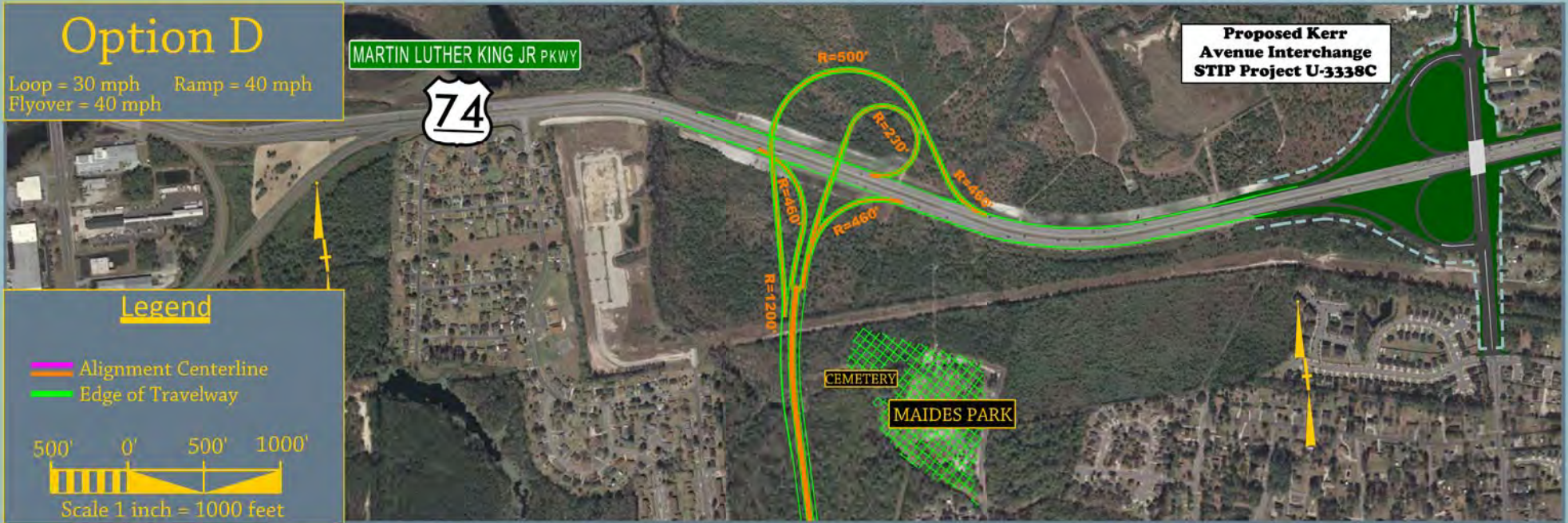
# Option C

Loop = 30 mph Ramp = 50 mph  
Flyover = 40 mph



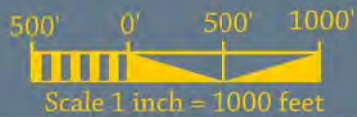
# Option D

Loop = 30 mph Ramp = 40 mph  
Flyover = 40 mph



## Legend

- Alignment Centerline
- Edge of Travelway



North Carolina  
Department of Transportation

Date: November 2011



Independence Boulevard Extension Project  
New Hanover County, NC  
STIP U-4434



Figure 11b  
Conceptual Designs  
MLK Jr. Parkway Interchange