

APPENDIX H

**APPROVED PRELIMINARY
JURISDICTIONAL DETERMINATION AND
STREAM DETERMINATION LETTER**

Electronically Transmitted and Revised
U.S. ARMY CORPS OF ENGINEERS
WILMINGTON DISTRICT

Action Id. SAW-2004-00168 County: New Hanover U.S.G.S. Quad: Castle Hayne

NOTIFICATION OF JURISDICTIONAL DETERMINATION

Property Owner: NCDOT-Division 3
attn: Mr. Mason Herndon
Address: 5501 Barbados Blvd
Castle Hayne, NC 28429

Size (acres) +/- 632
Nearest Waterway Smith Creek
USGS HUC 3030007

Nearest Town Wilmington
River Basin Cape Fear
Coordinates Latitude: 34.2378
Longitude: -77.90661

Location description: The project (U-4434)study area extends from Independence Blvd(SR 1209) from the intersection with Randall Parkway and Mercer Ave. to Martin Luther King Jr. Blvd (SR 2649), New Hanover County.

Indicate Which of the Following Apply:

A. Preliminary Determination

Based on preliminary information, there may be wetlands on the above described property. We strongly suggest you have this property inspected to determine the extent of Department of the Army (DA) jurisdiction. To be considered final, a jurisdictional determination must be verified by the Corps. This preliminary determination is not an appealable action under the Regulatory Program Administrative Appeal Process (Reference 33 CFR Part 331). If you wish, you may request an approved JD (which may be appealed), by contacting the Corps district for further instruction. Also, you may provide new information for further consideration by the Corps to reevaluate the JD.

B. Approved Determination

- There are Navigable Waters of the United States within the above described property subject to the permit requirements of Section 10 of the Rivers and Harbors Act and Section 404 of the Clean Water Act. Unless there is a change in the law or our published regulations, this determination may be relied upon for a period not to exceed five years from the date of this notification.
- There are waters of the U.S. including wetlands on the above described property subject to the permit requirements of Section 404 of the Clean Water Act (CWA)(33 USC § 1344). Unless there is a change in the law or our published regulations, this determination may be relied upon for a period not to exceed five years from the date of this notification.
 - We strongly suggest you have the wetlands on your property delineated. Due to the size of your property and/or our present workload, the Corps may not be able to accomplish this wetland delineation in a timely manner. For a more timely delineation, you may wish to obtain a consultant. To be considered final, any delineation must be verified by the Corps.
 - The waters of the U.S. including wetlands on your project area have been delineated and the delineation has been verified by the Corps. We strongly suggest you have this delineation surveyed. Upon completion, this survey should be reviewed and verified by the Corps. Once verified, this survey will provide an accurate depiction of all areas subject to CWA jurisdiction on your property which, provided there is no change in the law or our published regulations, may be relied upon for a period not to exceed five years.
 - The waters of the U.S. including wetlands have been delineated and surveyed and are accurately depicted on the plat signed by the Corps Regulatory Official identified below on _____. Unless there is a change in the law or our published regulations, this determination may be relied upon for a period not to exceed five years from the date of this notification.
- There are no waters of the U.S., to include wetlands, present on the above described project area which are subject to the permit requirements of Section 404 of the Clean Water Act (33 USC 1344). Unless there is a change in the law or our

published regulations, this determination may be relied upon for a period not to exceed five years from the date of this notification.

- The property is located in one of the 20 Coastal Counties subject to regulation under the Coastal Area Management Act (CAMA). You should contact the Division of Coastal Management in Morehead City, NC, at (252) 808-2808 to determine their requirements.

Placement of dredged or fill material within waters of the US and/or wetlands without a Department of the Army permit may constitute a violation of Section 301 of the Clean Water Act (33 USC § 1311). If you have any questions regarding this determination and/or the Corps regulatory program, please contact **Brad Shaver** at **910-251-4611** or **Brad.E.Shaver@usace.army.mil**.

C. Basis For Determination: A final jurisdictional determination has not been completed.

D. Remarks: This updated prelim JD covers an updated PJD effort and is accurately depicted on the attached field sketch.

*Monte
Matthews*

Date: 2019.09.11

15:01:54 -04'00'

Corps Regulatory Official: _____

Date: **September 11, 2019**

Expiration Date: **N/A**

The Wilmington District is committed to providing the highest level of support to the public. To help us ensure we continue to do so, please complete our Customer Satisfaction Survey, located online at <http://regulatory.usacesurvey.com/>.

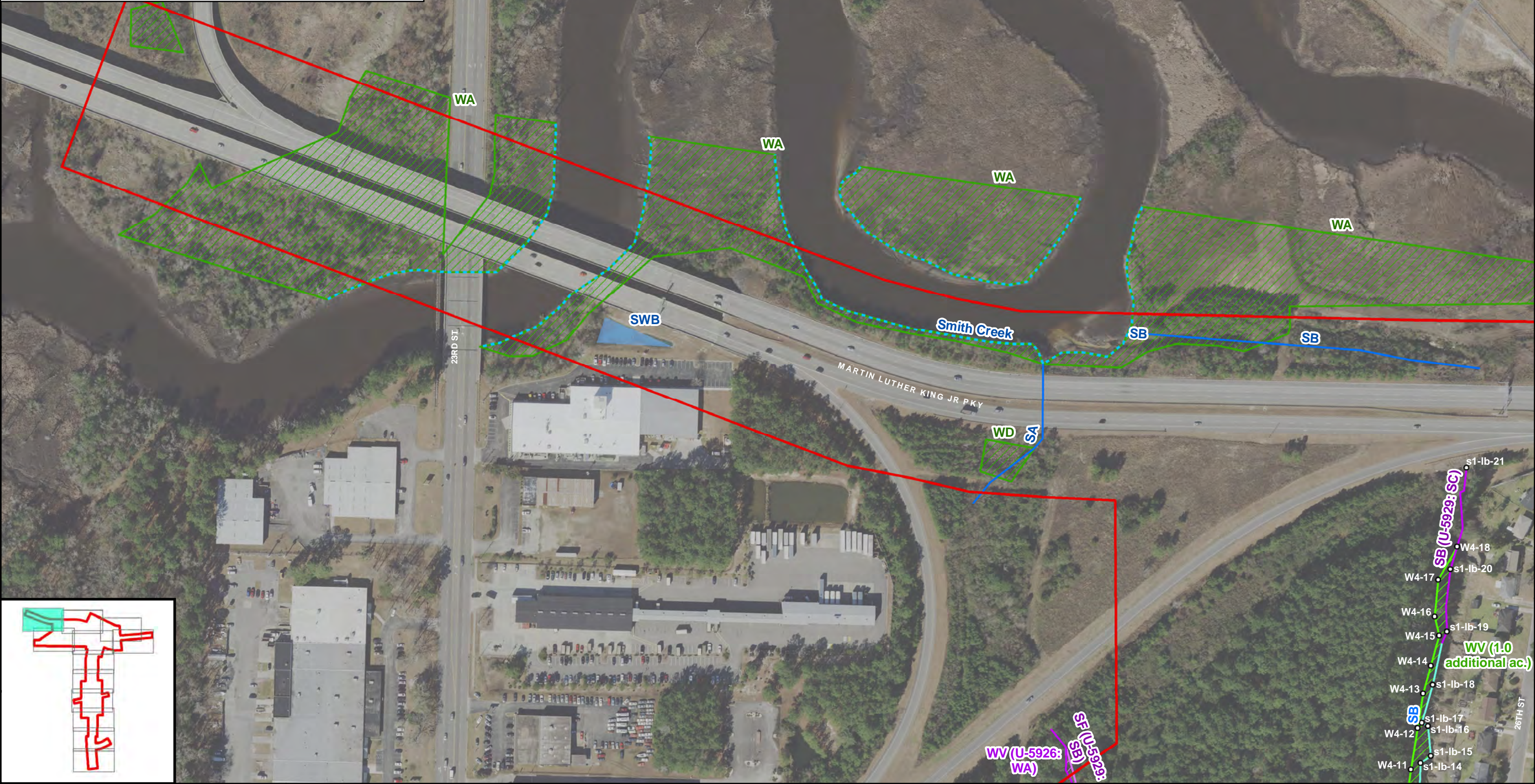
Copy furnished (electronic):

NCDEQ-DWR attn: Ms. Joanne Steenhuis

Flag Point Locations

W4-11, 34.255176, -77.912996	W4-16, 34.256084, -77.912814	s1-lb-16, 34.255434, -77.912872
W4-12, 34.255423, -77.912944	W4-17, 34.256302, -77.912786	s1-lb-17, 34.255453, -77.912915
W4-13, 34.255628, -77.912903	W4-18, 34.256496, -77.912648	s1-lb-18, 34.255680, -77.912833
W4-14, 34.255791, -77.912846	s1-lb-14, 34.255215, -77.912928	s1-lb-19, 34.255994, -77.912729
W4-15, 34.255972, -77.912785	s1-lb-15, 34.255256, -77.912853	s1-lb-20, 34.256364, -77.912698
		s1-lb-21, 34.256965, -77.912576

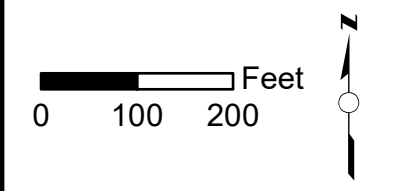
Note: Smith Creek is a Section 10 water.



Legend

Study Area	Stream (2011)	Surface Water (2011)	Wetland (2019)
Flag Point (2019)	Stream (2019)	Wetland (U-5926 PJD)	
Stream (U-5926 PJD)	Approximate Stream Channel	Wetland (2011)	

PRELIMINARY JURISDICTIONAL FEATURES MAP
Independence Boulevard Extension
New Hanover County, North Carolina
STIP U-4434
 Service Layer Credits: NC Center for Geographic Information & Analysis



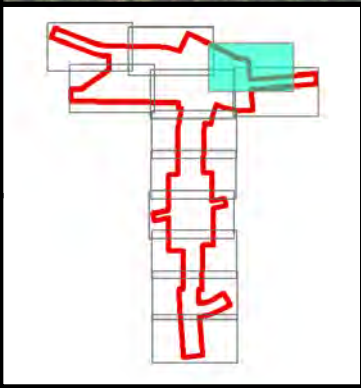
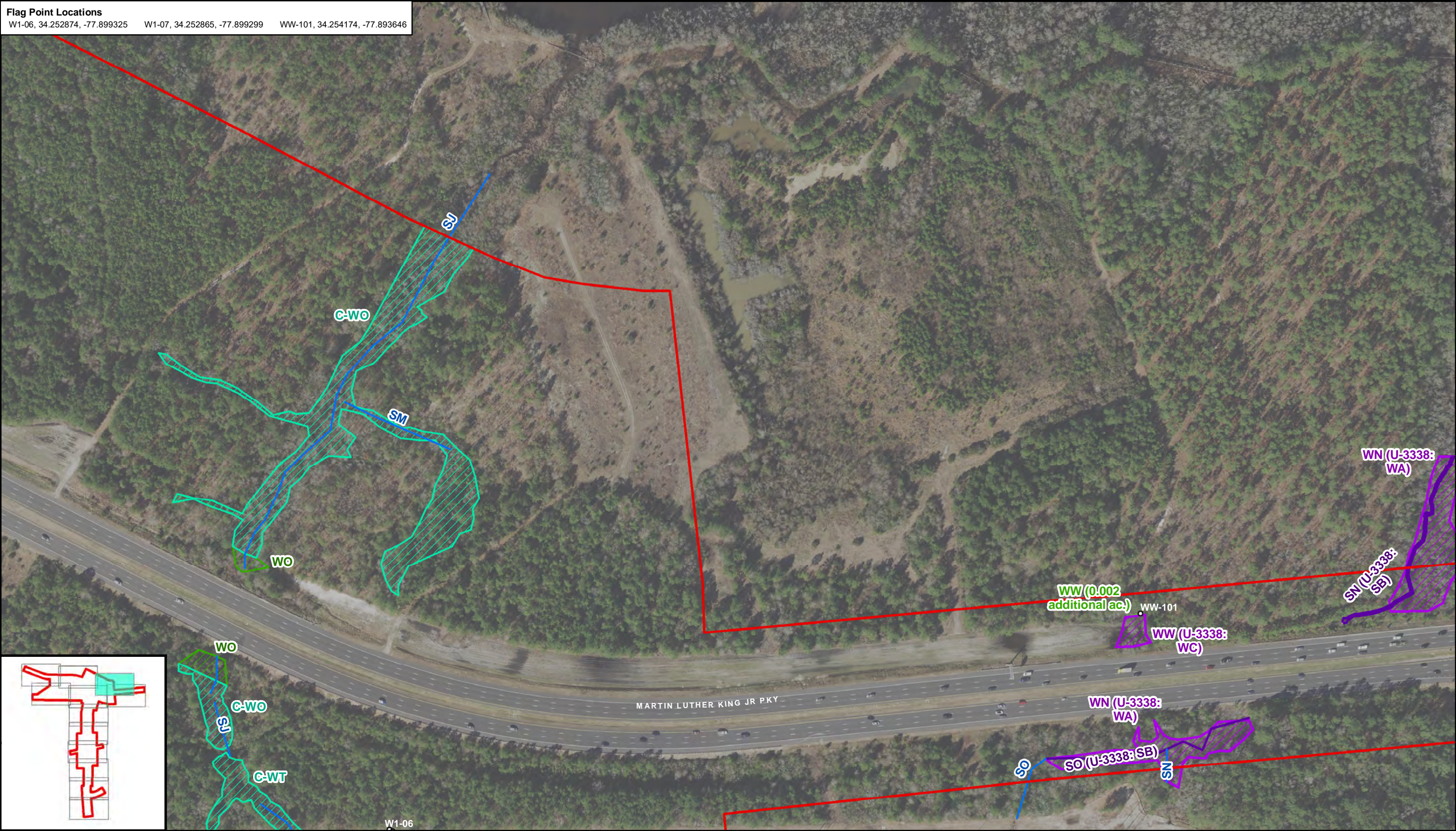
Div: 3	TIP# U-4434	Figure 3-1
Date: August 2019		

Note: Smith Creek and portions of SH in the vicinity of Martin Luther King Jr Parkway are Section 10 waters.



SH on Figure 3-2 is tidally influenced and deemed Section 10 waters

Flag Point Locations
 W1-06, 34.252874, -77.899325 W1-07, 34.252865, -77.899299 WW-101, 34.254174, -77.893646

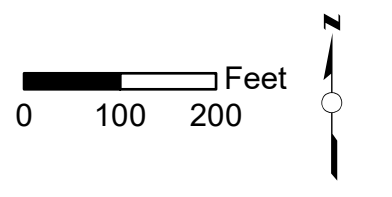


Legend

Study Area	Stream (U-3338 PJD)	Wetland (Cameron Tract)
Flag Point (2019)	Approximate Stream Channel	Wetland (2011)
Stream (2011)	Wetland (U-3338 PJD)	Wetland (2019)

PRELIMINARY JURISDICTIONAL FEATURES MAP
 Independence Boulevard Extension
 New Hanover County, North Carolina
 STIP U-4434

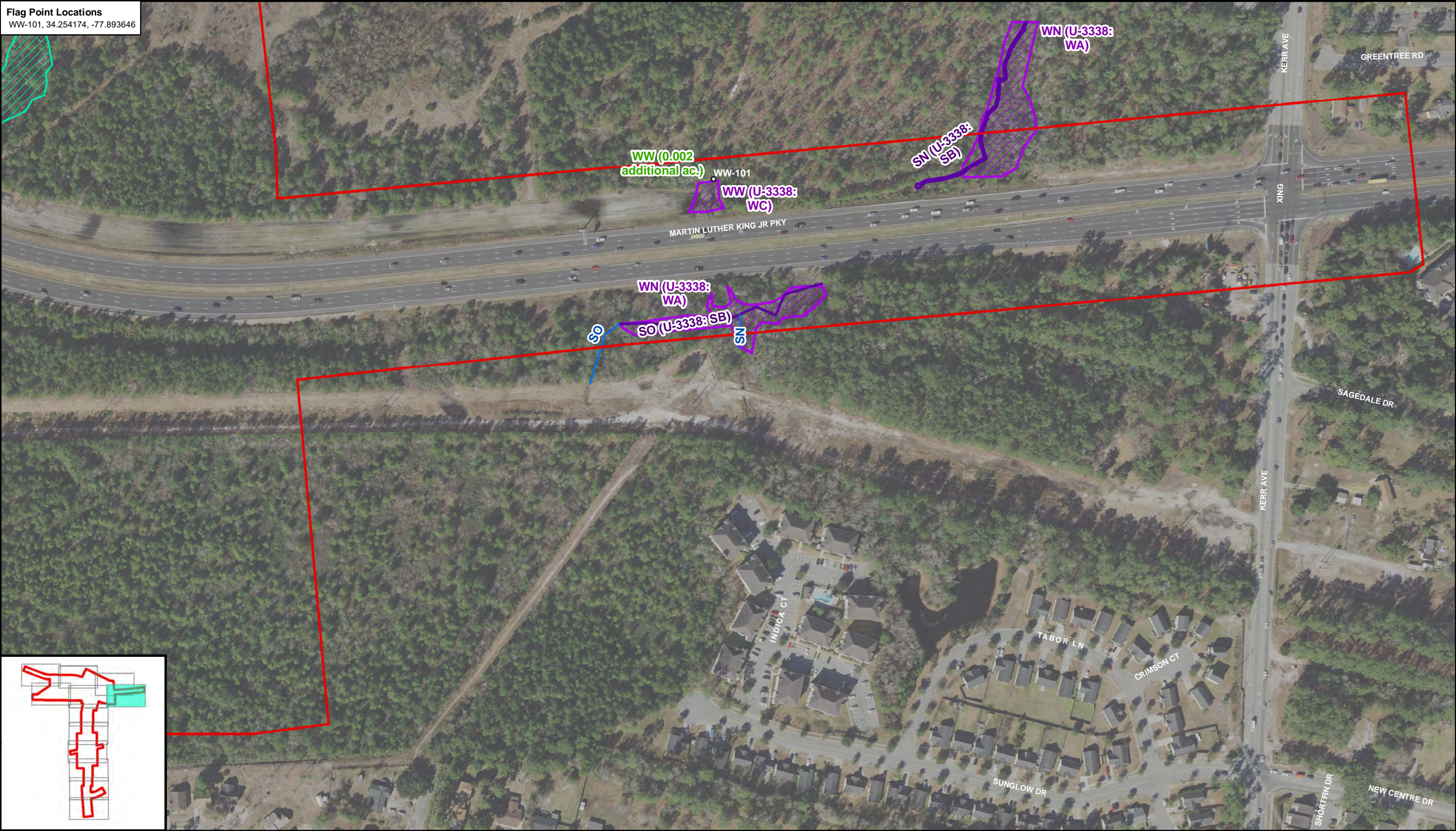
Service Layer Credits: NC Center for Geographic Information & Analysis



Div: 3	TIP# U-4434
Date: August 2019	

Figure
3-3

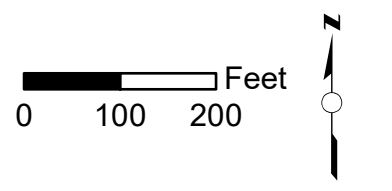
Flag Point Locations
 WW-101, 34.254174, -77.893646



Legend

Study Area	Stream (U-3338 PJD)	Wetland (Cameron Tract)
Flag Point (2019)	Approximate Stream Channel	Wetland (2019)
Stream (2011)	Wetland (U-3338 PJD)	

PRELIMINARY JURISDICTIONAL FEATURES MAP
 Independence Boulevard Extension
 New Hanover County, North Carolina
 STIP U-4434
 Service Layer Credits: NC Center for Geographic Information & Analysis

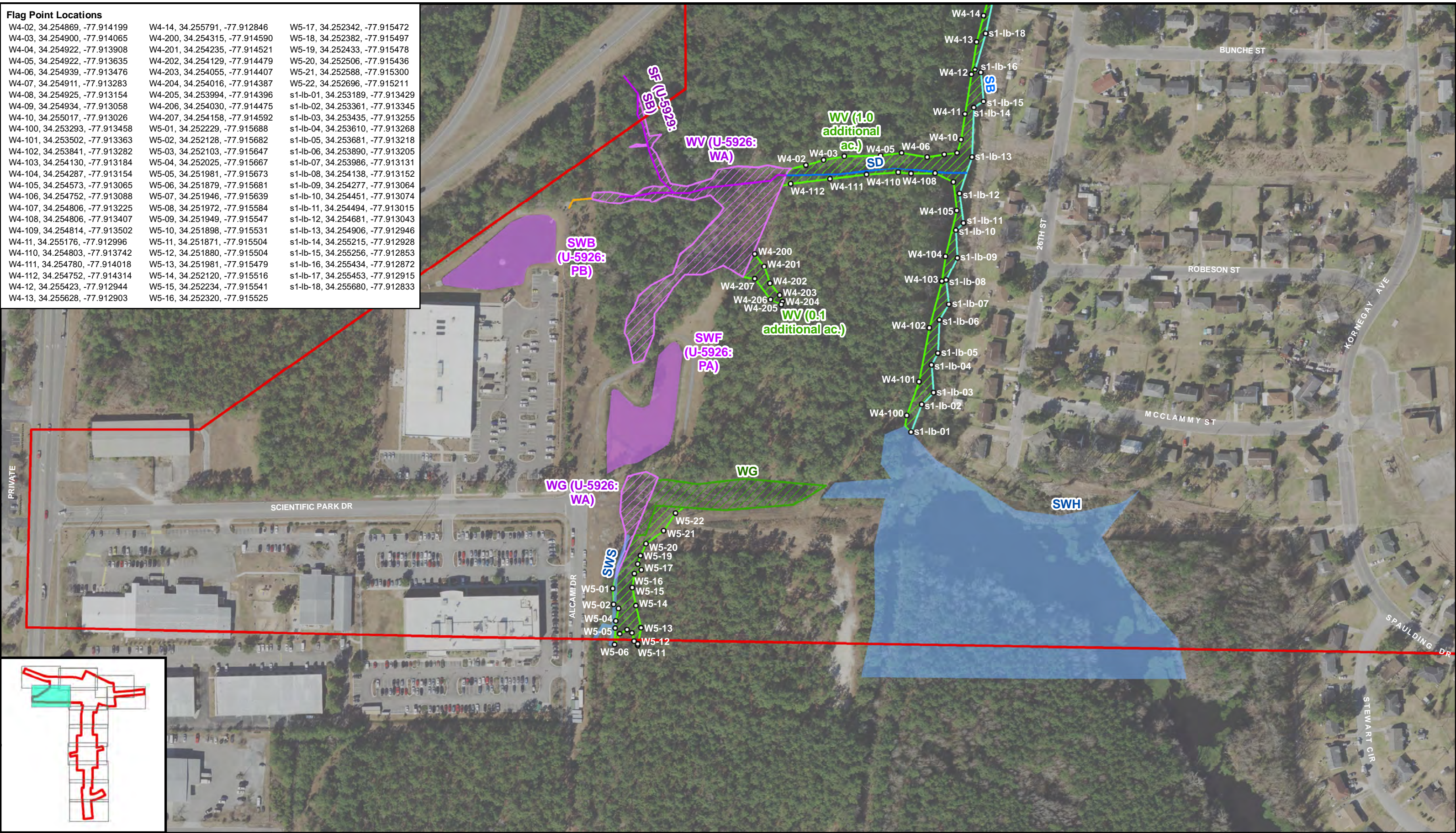


Div: 3	TIP# U-4434
Date: August 2019	

Figure
3-4

Flag Point Locations

W4-02, 34.254869, -77.914199	W4-14, 34.255791, -77.912846	W5-17, 34.252342, -77.915472
W4-03, 34.254900, -77.914065	W4-200, 34.254315, -77.914590	W5-18, 34.252382, -77.915497
W4-04, 34.254922, -77.913908	W4-201, 34.254235, -77.914521	W5-19, 34.252433, -77.915478
W4-05, 34.254922, -77.913635	W4-202, 34.254129, -77.914479	W5-20, 34.252506, -77.915436
W4-06, 34.254939, -77.913476	W4-203, 34.254055, -77.914407	W5-21, 34.252588, -77.915300
W4-07, 34.254911, -77.913283	W4-204, 34.254016, -77.914387	W5-22, 34.252696, -77.915211
W4-08, 34.254925, -77.913154	W4-205, 34.253994, -77.914396	s1-lb-01, 34.253189, -77.913429
W4-09, 34.254934, -77.913058	W4-206, 34.254030, -77.914475	s1-lb-02, 34.253361, -77.913345
W4-10, 34.255017, -77.913026	W4-207, 34.254158, -77.914592	s1-lb-03, 34.253435, -77.913255
W4-100, 34.253293, -77.913458	W5-01, 34.252229, -77.915688	s1-lb-04, 34.253610, -77.913268
W4-101, 34.253502, -77.913363	W5-02, 34.252128, -77.915682	s1-lb-05, 34.253681, -77.913218
W4-102, 34.253841, -77.913282	W5-03, 34.252103, -77.915647	s1-lb-06, 34.253890, -77.913205
W4-103, 34.254130, -77.913184	W5-04, 34.252025, -77.915667	s1-lb-07, 34.253986, -77.913131
W4-104, 34.254287, -77.913154	W5-05, 34.251981, -77.915673	s1-lb-08, 34.254138, -77.913152
W4-105, 34.254573, -77.913065	W5-06, 34.251879, -77.915681	s1-lb-09, 34.254277, -77.913064
W4-106, 34.254752, -77.913088	W5-07, 34.251946, -77.915639	s1-lb-10, 34.254451, -77.913074
W4-107, 34.254806, -77.913225	W5-08, 34.251972, -77.915584	s1-lb-11, 34.254494, -77.913015
W4-108, 34.254806, -77.913407	W5-09, 34.251949, -77.915547	s1-lb-12, 34.254681, -77.913043
W4-109, 34.254814, -77.913502	W5-10, 34.251898, -77.915531	s1-lb-13, 34.254906, -77.912946
W4-11, 34.255176, -77.912996	W5-11, 34.251871, -77.915504	s1-lb-14, 34.255215, -77.912928
W4-110, 34.254803, -77.913742	W5-12, 34.251880, -77.915504	s1-lb-15, 34.255256, -77.912853
W4-111, 34.254780, -77.914018	W5-13, 34.251981, -77.915479	s1-lb-16, 34.255434, -77.912872
W4-112, 34.254752, -77.914314	W5-14, 34.252120, -77.915516	s1-lb-17, 34.255453, -77.912915
W4-12, 34.255423, -77.912944	W5-15, 34.252234, -77.915541	s1-lb-18, 34.255680, -77.912833
W4-13, 34.255628, -77.912903	W5-16, 34.252320, -77.915525	



NORTH CAROLINA DEPARTMENT OF TRANSPORTATION
DIVISION OF HIGHWAYS

Legend

- Study Area
- Stream (U-5926 PJD)
- Stream (2011)
- Tributary WOUs (U-5926 PJD)
- Stream (2019)
- Flag Point (2019)

PRELIMINARY JURISDICTIONAL FEATURES MAP
Independence Boulevard Extension
New Hanover County, North Carolina
STIP U-4434

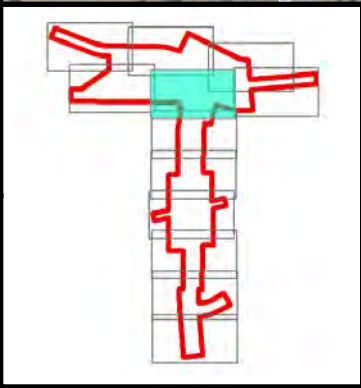
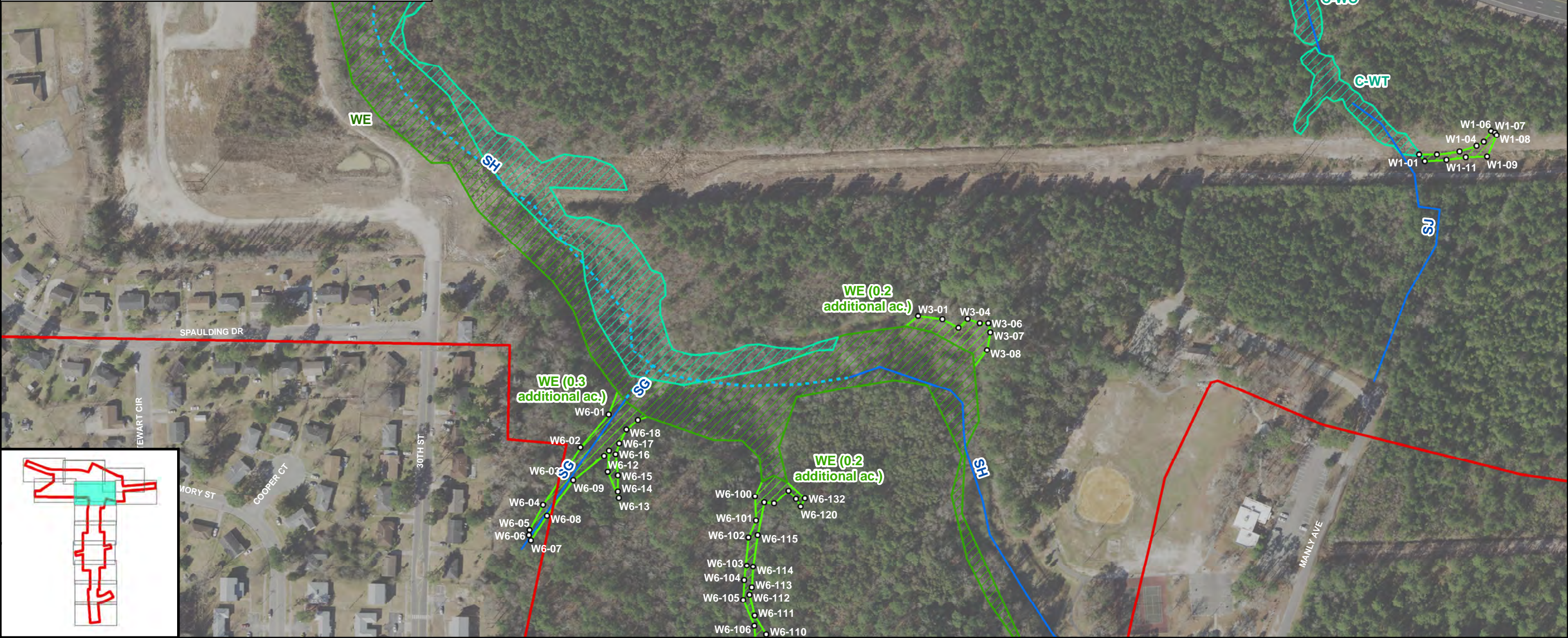
Service Layer Credits: NC Center for Geographic Information & Analysis

0 100 200 Feet

Div: 3	TIP# U-4434	Figure 3-5
Date: August 2019		

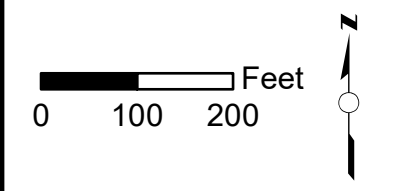
Flag Point Locations

W1-01, 34.252741, -77.899830	W3-08, 34.251633, -77.902871	W6-110, 34.249995, -77.904437
W1-02, 34.252741, -77.899708	W6-01, 34.251284, -77.905522	W6-111, 34.250106, -77.904518
W1-03, 34.252756, -77.899549	W6-02, 34.251095, -77.905723	W6-112, 34.250229, -77.904551
W1-04, 34.252787, -77.899428	W6-03, 34.250944, -77.905843	W6-113, 34.250270, -77.904535
W1-05, 34.252811, -77.899378	W6-04, 34.250761, -77.905989	W6-114, 34.250389, -77.904524
W1-06, 34.252874, -77.899325	W6-05, 34.250617, -77.906085	W6-115, 34.250572, -77.904489
W1-07, 34.252865, -77.899299	W6-06, 34.250586, -77.906091	W6-116, 34.250762, -77.904440
W1-08, 34.252849, -77.899289	W6-07, 34.250557, -77.906078	W6-117, 34.250757, -77.904372
W1-09, 34.252727, -77.899357	W6-08, 34.250699, -77.905963	W6-118, 34.250830, -77.904270
W1-10, 34.252723, -77.899504	W6-09, 34.250904, -77.905775	W6-119, 34.250780, -77.904218
W1-11, 34.252710, -77.899641	W6-10, 34.251044, -77.905559	W6-12, 34.250950, -77.905535
W1-12, 34.252704, -77.899792	W6-100, 34.250798, -77.904505	W6-120, 34.250736, -77.904187
W3-01, 34.251836, -77.903350	W6-101, 34.250659, -77.904500	W6-13, 34.250797, -77.905459
W3-02, 34.251814, -77.903181	W6-102, 34.250559, -77.904555	W6-132, 34.250783, -77.904155
W3-03, 34.251764, -77.903068	W6-103, 34.250396, -77.904568	W6-14, 34.250837, -77.905464
W3-04, 34.251816, -77.903005	W6-104, 34.250313, -77.904589	W6-15, 34.250928, -77.905463
W3-05, 34.251791, -77.902918	W6-105, 34.250197, -77.904596	W6-16, 34.251053, -77.905479
W3-06, 34.251790, -77.902860	W6-106, 34.250047, -77.904520	W6-17, 34.251116, -77.905451
W3-07, 34.251736, -77.902847	W6-11, 34.251073, -77.905524	W6-18, 34.251196, -77.905401
		W6-19, 34.251249, -77.905320



Legend

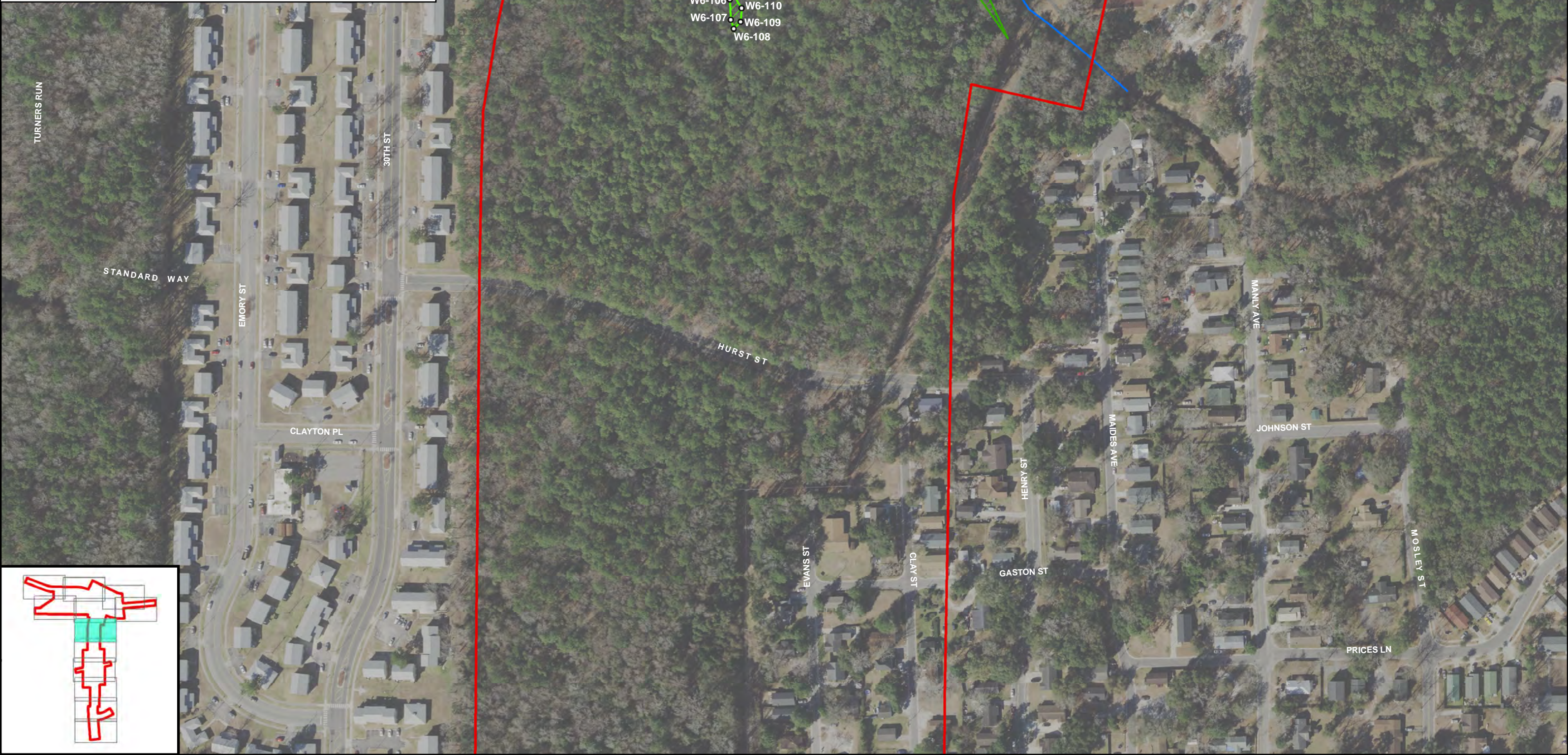
Study Area	Approximate Stream Channel	Wetland (2011)
Flag Point (2019)	Surface Water (2011)	Wetland (2019)
Stream (2011)	Wetland (Cameron Tract)	



Div: 3	TIP# U-4434
Date: August 2019	

Flag Point Locations

W6-04, 34.250761, -77.905989	W6-105, 34.250197, -77.904596	W6-115, 34.250572, -77.904489
W6-05, 34.250617, -77.906085	W6-106, 34.250047, -77.904520	W6-116, 34.250762, -77.904440
W6-06, 34.250586, -77.906091	W6-107, 34.249929, -77.904515	W6-117, 34.250757, -77.904372
W6-07, 34.250557, -77.906078	W6-108, 34.249877, -77.904493	W6-118, 34.250830, -77.904270
W6-08, 34.250699, -77.905963	W6-109, 34.249917, -77.904445	W6-119, 34.250780, -77.904218
W6-100, 34.250798, -77.904505	W6-110, 34.249995, -77.904437	W6-120, 34.250736, -77.904187
W6-101, 34.250659, -77.904500	W6-111, 34.250106, -77.904518	W6-13, 34.250797, -77.905459
W6-102, 34.250559, -77.904555	W6-112, 34.250229, -77.904551	W6-132, 34.250783, -77.904155
W6-103, 34.250396, -77.904568	W6-113, 34.250270, -77.904535	W6-14, 34.250837, -77.905464
W6-104, 34.250313, -77.904589	W6-114, 34.250389, -77.904524	

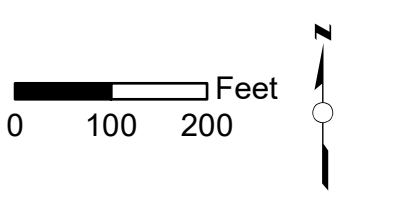


Legend

Study Area	Approximate Stream Channel
Flag Point (2019)	Wetland (2011)
Stream (2011)	Wetland (2019)

PRELIMINARY JURISDICTIONAL FEATURES MAP
Independence Boulevard Extension
New Hanover County, North Carolina
STIP U-4434

Service Layer Credits: NC Center for Geographic Information & Analysis



Div: 3	TIP# U-4434	Figure 3-7
Date: August 2019		

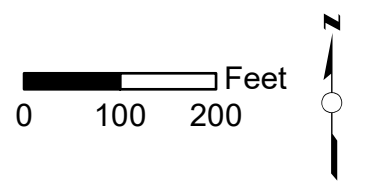


Legend

- Study Area
- - - Approximate Stream Channel

PRELIMINARY JURISDICTIONAL FEATURES MAP
Independence Boulevard Extension
New Hanover County, North Carolina
STIP U-4434

Service Layer Credits: NC Center for Geographic Information & Analysis



Div: 3	TIP# U-4434
Date: August 2019	

Figure
3-8

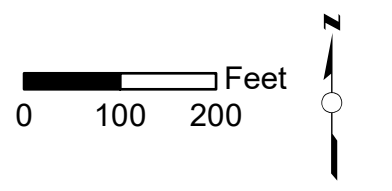
Flag Point Locations



- Legend**
- Study Area
 - Stream (2011)
 - - - Approximate Stream Channel

PRELIMINARY JURISDICTIONAL FEATURES MAP
 Independence Boulevard Extension
 New Hanover County, North Carolina
 STIP U-4434

Service Layer Credits: NC Center for Geographic Information & Analysis

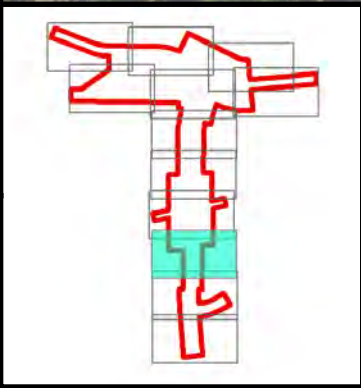


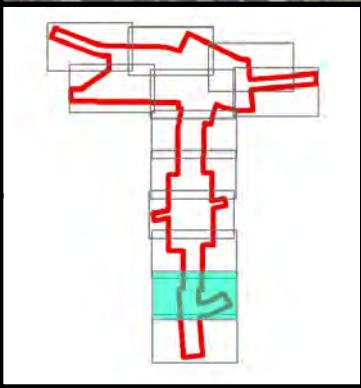
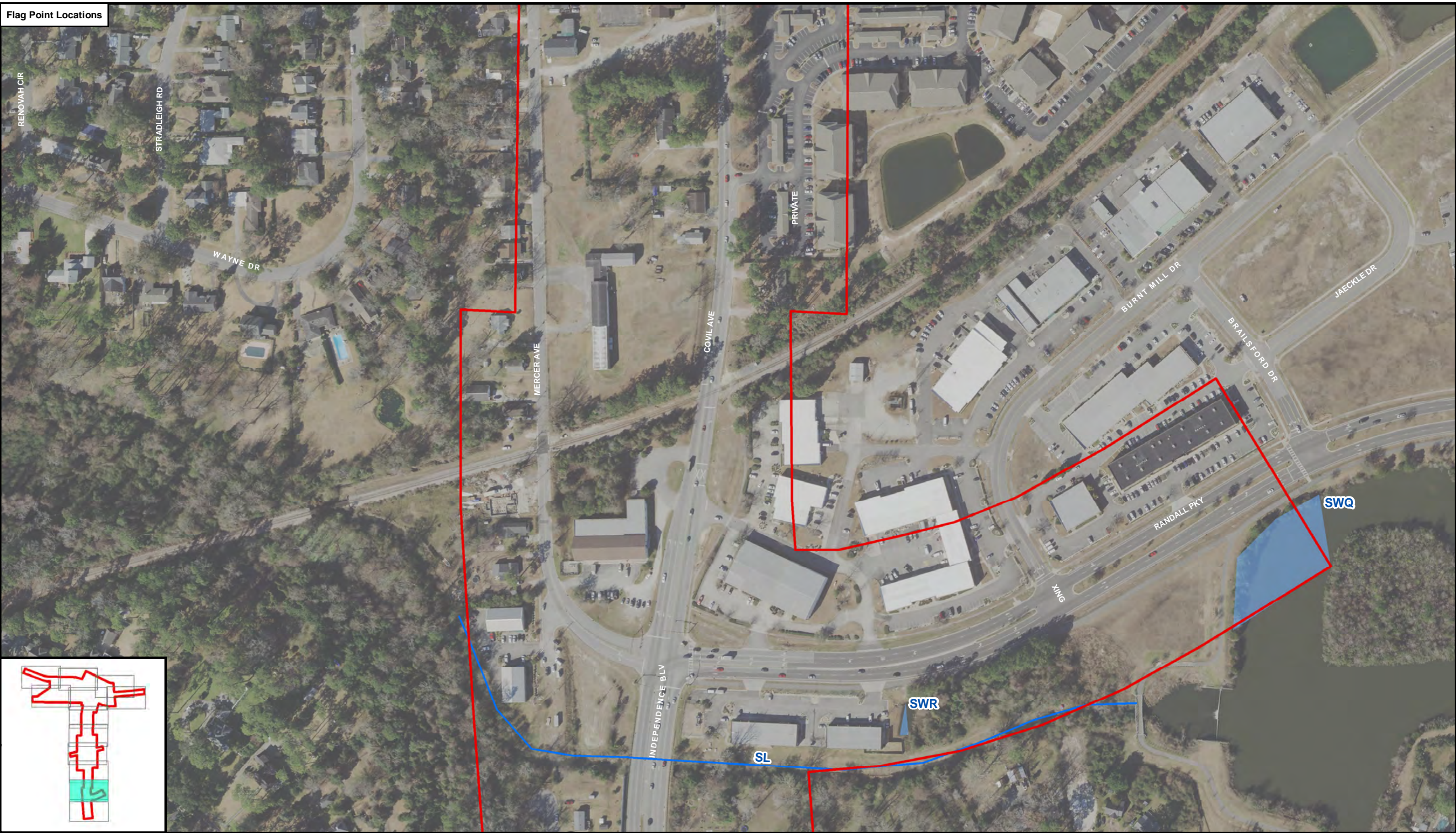
Div: 3	TIP# U-4434
Date: August 2019	

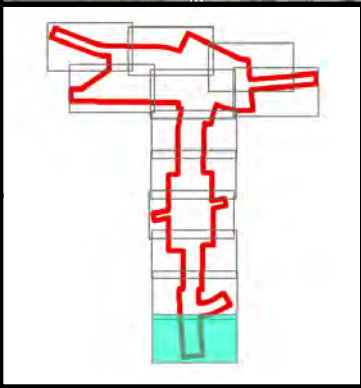
Figure
3-9



Portion of WS from 2011 Delineation no longer exists.







ROY COOPER
Governor
MICHAEL S. REGAN
Secretary
LINDA CULPEPPER
Director



October 30, 2019

Mason Herndon, Environmental Program Supervisor
NC DOT Division 3
5501 Barbados Blvd.
Castle Hayne, NC 28429

**Subject: NCDOT STIP U-4434, New Hanover County
Smith Creek and Burnt Mill Creek in the Cape Fear River Basin**

Revised On-Site Determination for Applicability to the Mitigation Rules (15A NCAC 2H .0506[h])

Dear Mason:

On June 27, 2019, at your request and in your attendance, Joanne Steenhuis, NC Division of Water Resource (NCDWR) staff, conducted an on-site determination to review drainage features located within the addendum area for the Independence Boulevard Extension from the end of the existing Independence Boulevard at Randall Parkway to MLK Parkway, for applicability to the mitigation rules (15A NCAC 2H .0506[h]). Additional site visits were also conducted on August 12, 2019 and August 21, 2019. This letter also references previous stream calls conducted on the original determination for U-4434 in 2011 and 2012, and additional stream call letters written on January 23, 2012 for U-3338 and October 2, 2017 for U-5926. Additional site visits were conducted on October 25, 2019 and October 30, 2019 in order to identify and reconfirm the stream types for the 2011 and 2012 stream call letters. The drainage features are approximated on the attached maps signed and dated September 11, 2019.

Stream Name	River Basin	Stream Type	Stream Classification	Stream Index Number
UT to Smith Creek (SA)	Cape Fear	Intermittent	C;Sw	18-74-63
UT to Smith Creek (SB)** (SC in U-5926)	Cape Fear	Perennial	C;Sw	18-74-63
UT to Smith Creek (SD)**(SA in U 5926)	Cape Fear	Intermittent/Perennial from the Beaver Dam	C;Sw	18-74-63
UT to Smith Creek (SF)**	Cape Fear	Intermittent	C;Sw	18-74-63
UT to Smith Creek (SG)	Cape Fear	Perennial	C;Sw	18-74-63
UT to Smith Creek (SH)	Cape Fear	Perennial	C;Sw	18-74-63
UT to Smith Creek (SJ)	Cape Fear	Perennial	C;Sw	18-74-63
UT to Burnt Mill Creek (SK)	Cape Fear	Intermittent	C;Sw	18-74-63-2
UT to Burnt Mill Creek (SL)	Cape Fear	Perennial	C;Sw	18-74-63-2
UT to Smith Creek (SM)	Cape Fear	Intermittent	C;Sw	18-74-63
UT to Smith Creek (SN)	Cape Fear	Perennial	C;Sw	18-74-63
UT to Smith Creek (SO)***	Cape Fear	Perennial	C;Sw	18-74-63
UT to Smith Creek (SR)	Cape Fear	Intermittent/Perennial from the wetland finger	C;Sw	18-74-63

** SB, SD and SF reference the stream call letter for U-5926 dated October 2, 2017

*** SO reference the stream call letter for U-3338 dated January 23, 2012



Please note that other sites identified in the jurisdictional determination in previous determinations will be considered accurate as presented. This letter only addresses the applicability to the mitigation rules, the Waters of the United States, or Waters of the State. Any impacts to wetlands and/or streams must comply with the 404/401 regulations, water supply regulations (15A NCAC 2B .0216), and any other required federal, state and local regulations. Please be aware that the USACE may require mitigation for impacts to intermittent and perennial streams, NCDWR limits mitigation to perennial streams with impacts greater than 300 linear feet.

The owner (or future owners) or permittee should notify NCDWR (and other relevant agencies) of this determination in any future correspondences concerning this property and/or project. This on-site determination shall expire five (5) years from the date of this letter.

Landowners or affected parties that dispute a determination made by NCDWR or Delegated Local Authority that a surface water exists and that it is subject to the mitigation rules may request a determination by the Director. A request for a determination by the Director shall be referred to the Director in writing c/o Amy Chapman, NCDWR Wetlands/401 Unit, 1617 Mail Service Center, Raleigh, NC 27699-1617.

Individuals that dispute a determination by NCDWR or Delegated Local Authority that "exempts" a surface water from the mitigation rules may ask for an adjudicatory hearing. You may obtain the petition form from the office of Administrative hearings. You must file the petition with the office of Administrative Hearings within sixty (60) days of receipt of this notice and the date the affected party (including downstream and adjacent landowners) is notified of this decision. A petition is considered filed when it is received in the office of Administrative Hearings during normal office hours. The Office of Administrative Hearings accepts filings Monday through Friday between the hours of 8:00am and 5:00pm, except for official state holidays. The original and one (1) copy of the petition must be filed with the Office of Administrative Hearings.

The petition may be faxed-provided the original and one copy of the document is received by the Office of Administrative Hearings within five (5) business days following the faxed transmission. The mailing address for the Office of Administrative Hearings is:

Office of Administrative Hearings
6714 Mail Service Center
Raleigh, NC 27699-6714
Telephone: (919) 431-3000, Facsimile: (919) 431-3100

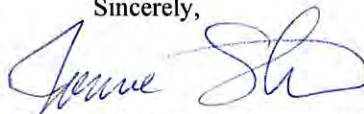
A copy of the petition must also be served on DEQ as follows:

Mr. Sam M. Hayes, General Counsel
Department of Environmental Quality
1601 Mail Service Center
Raleigh, NC 27600-1601

This determination is final and binding unless you ask for a hearing within 60 days.

If you have any additional questions or require additional information, please contact me at (910) 796-7306 or joanne.steenhuis@ncdenr.gov.

Sincerely,



Joanne Steenhuis, Environmental Specialist II
Division of Water Resources

Attachments: Figure 3 (Figures 1 – 12) (12 pages)

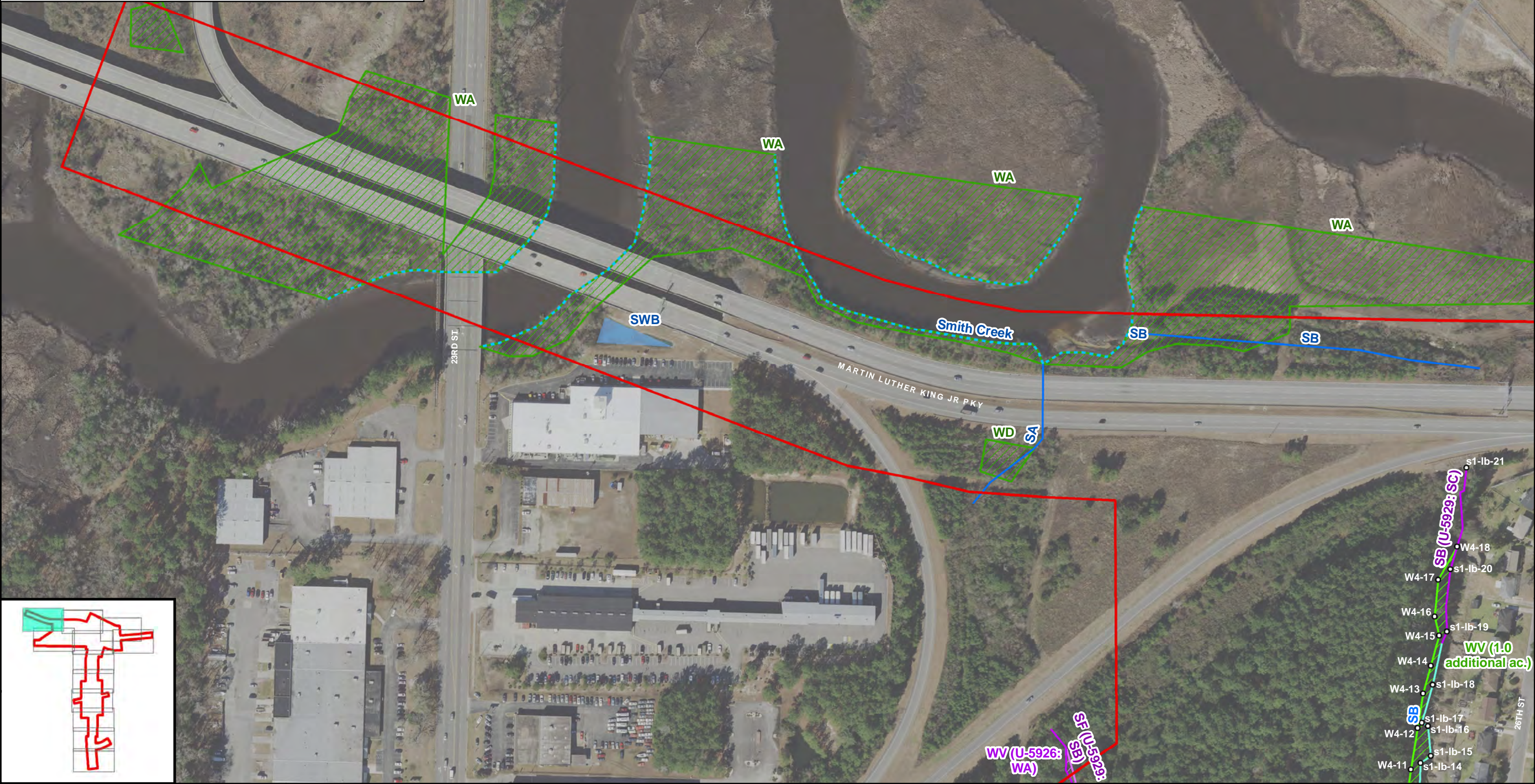
Electronic copy only distribution:

Brad Shaver, US Army Corps of Engineers, Wilmington Field Office
File Copy

Flag Point Locations

W4-11, 34.255176, -77.912996	W4-16, 34.256084, -77.912814	s1-lb-16, 34.255434, -77.912872
W4-12, 34.255423, -77.912944	W4-17, 34.256302, -77.912786	s1-lb-17, 34.255453, -77.912915
W4-13, 34.255628, -77.912903	W4-18, 34.256496, -77.912648	s1-lb-18, 34.255680, -77.912833
W4-14, 34.255791, -77.912846	s1-lb-14, 34.255215, -77.912928	s1-lb-19, 34.255994, -77.912729
W4-15, 34.255972, -77.912785	s1-lb-15, 34.255256, -77.912853	s1-lb-20, 34.256364, -77.912698
		s1-lb-21, 34.256965, -77.912576

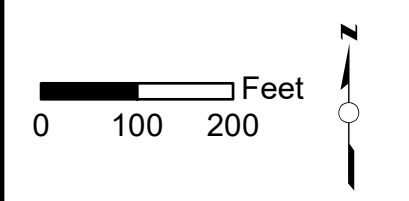
Note: Smith Creek is a Section 10 water.



Legend *Joanne Steenhuis* 10/30/2019

 Study Area	— Stream (2011)	 Surface Water (2011)	 Wetland (2019)
o Flag Point (2019)	— Stream (2019)	 Wetland (U-5926 PJD)	
— Stream (U-5926 PJD)	- - - Approximate Stream Channel	 Wetland (2011)	

PRELIMINARY JURISDICTIONAL FEATURES MAP
Independence Boulevard Extension
New Hanover County, North Carolina
STIP U-4434
 Service Layer Credits: NC Center for Geographic Information & Analysis

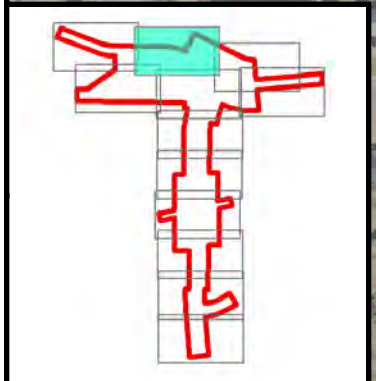


Div: 3	TIP# U-4434	Figure 3-1
Date: August 2019		

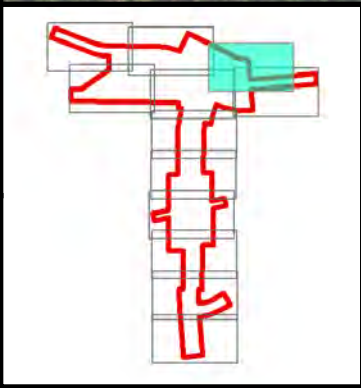
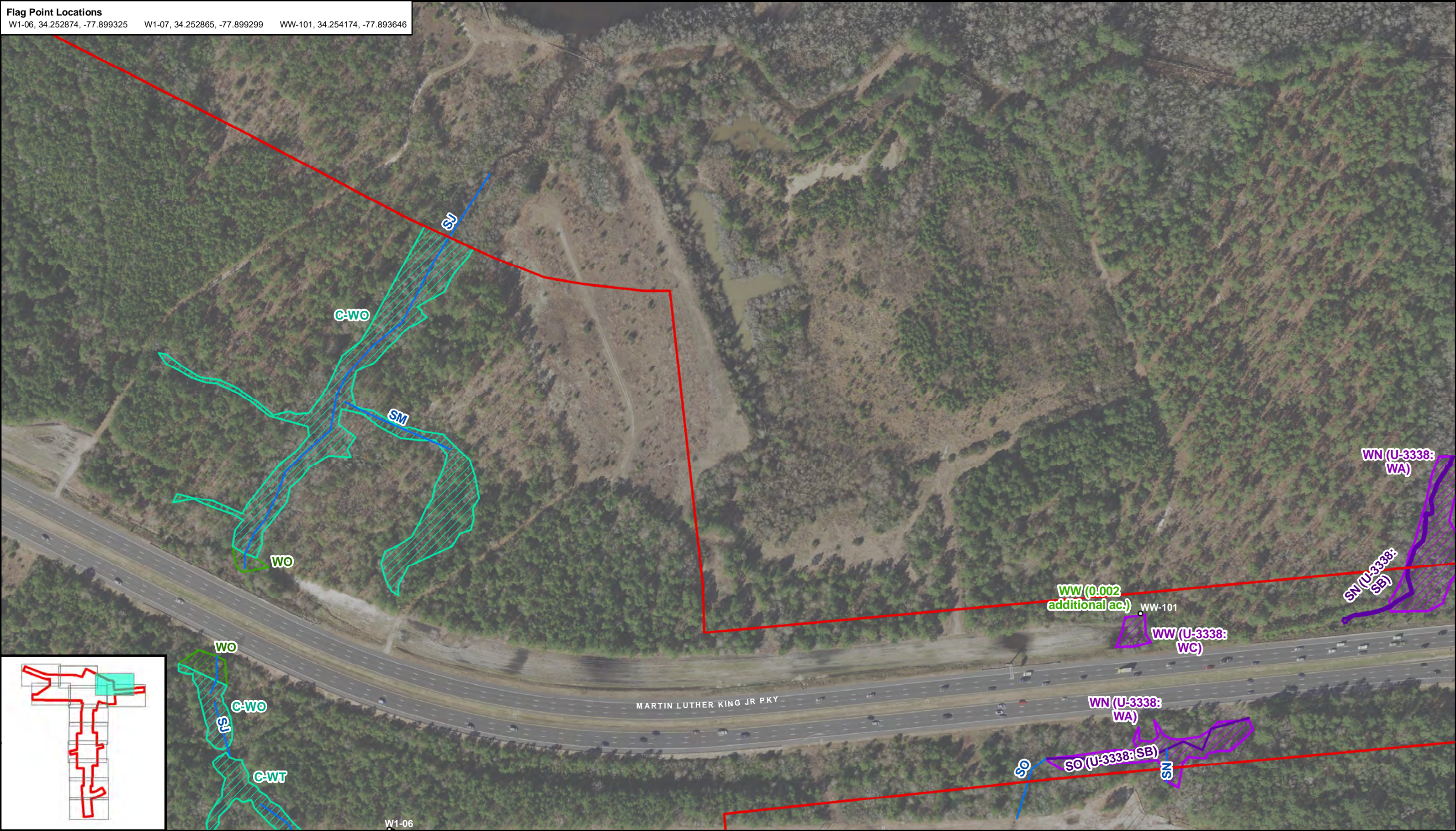
Note: Smith Creek and portions of SH in the vicinity of Martin Luther King Jr Parkway are Section 10 waters.



SH on Figure 3-2 is tidally influenced and deemed Section 10 waters



Flag Point Locations
 W1-06, 34.252874, -77.899325 W1-07, 34.252865, -77.899299 WW-101, 34.254174, -77.893646

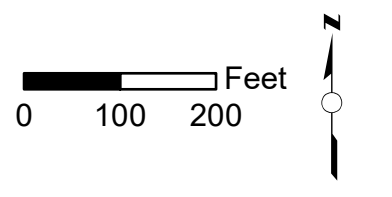


Legend *Joanne Steenhuis* 10/30/2019

Study Area	Stream (U-3338 PJD)	Wetland (Cameron Tract)
Flag Point (2019)	Approximate Stream Channel	Wetland (2011)
Stream (2011)	Wetland (U-3338 PJD)	Wetland (2019)

PRELIMINARY JURISDICTIONAL FEATURES MAP
 Independence Boulevard Extension
 New Hanover County, North Carolina
 STIP U-4434

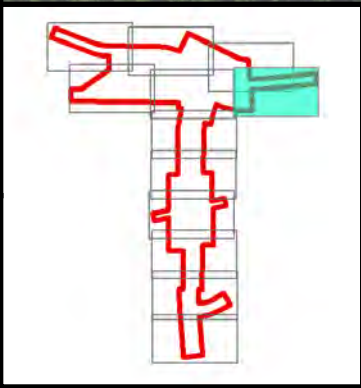
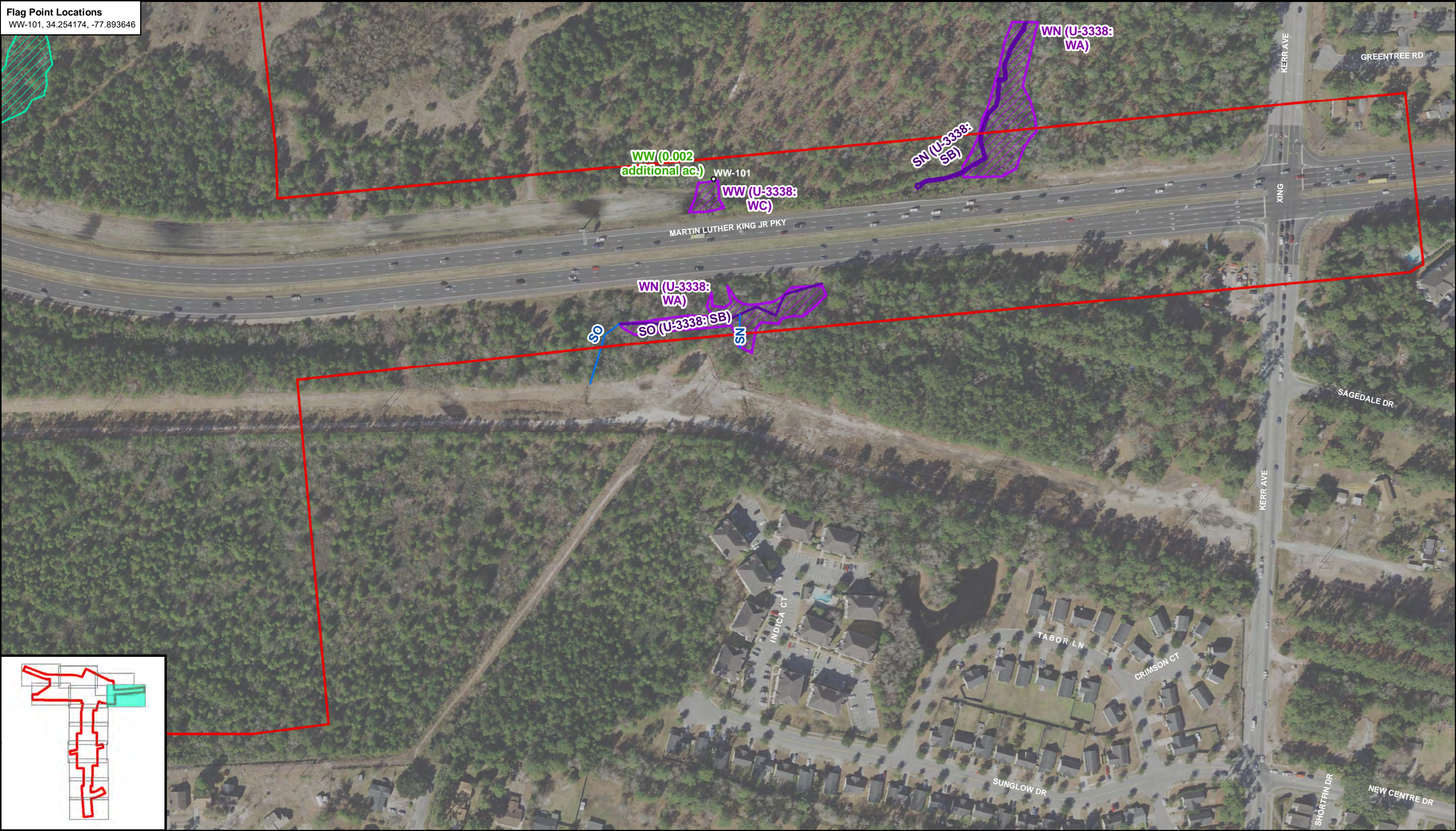
Service Layer Credits: NC Center for Geographic Information & Analysis



Div: 3	TIP# U-4434
Date: August 2019	

Figure
3-3

Flag Point Locations
 WW-101, 34.254174, -77.893646

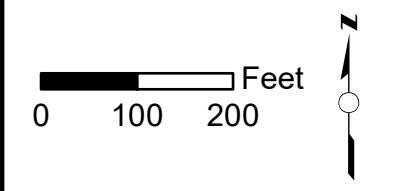


Legend *Joanne Steenhuis* 10/30/2019

- Study Area
- Stream (2011)
- Stream (U-3338 PJD)
- Approximate Stream Channel
- Wetland (U-3338 PJD)
- Wetland (Cameron Tract)
- Wetland (2019)

PRELIMINARY JURISDICTIONAL FEATURES MAP
 Independence Boulevard Extension
 New Hanover County, North Carolina
 STIP U-4434

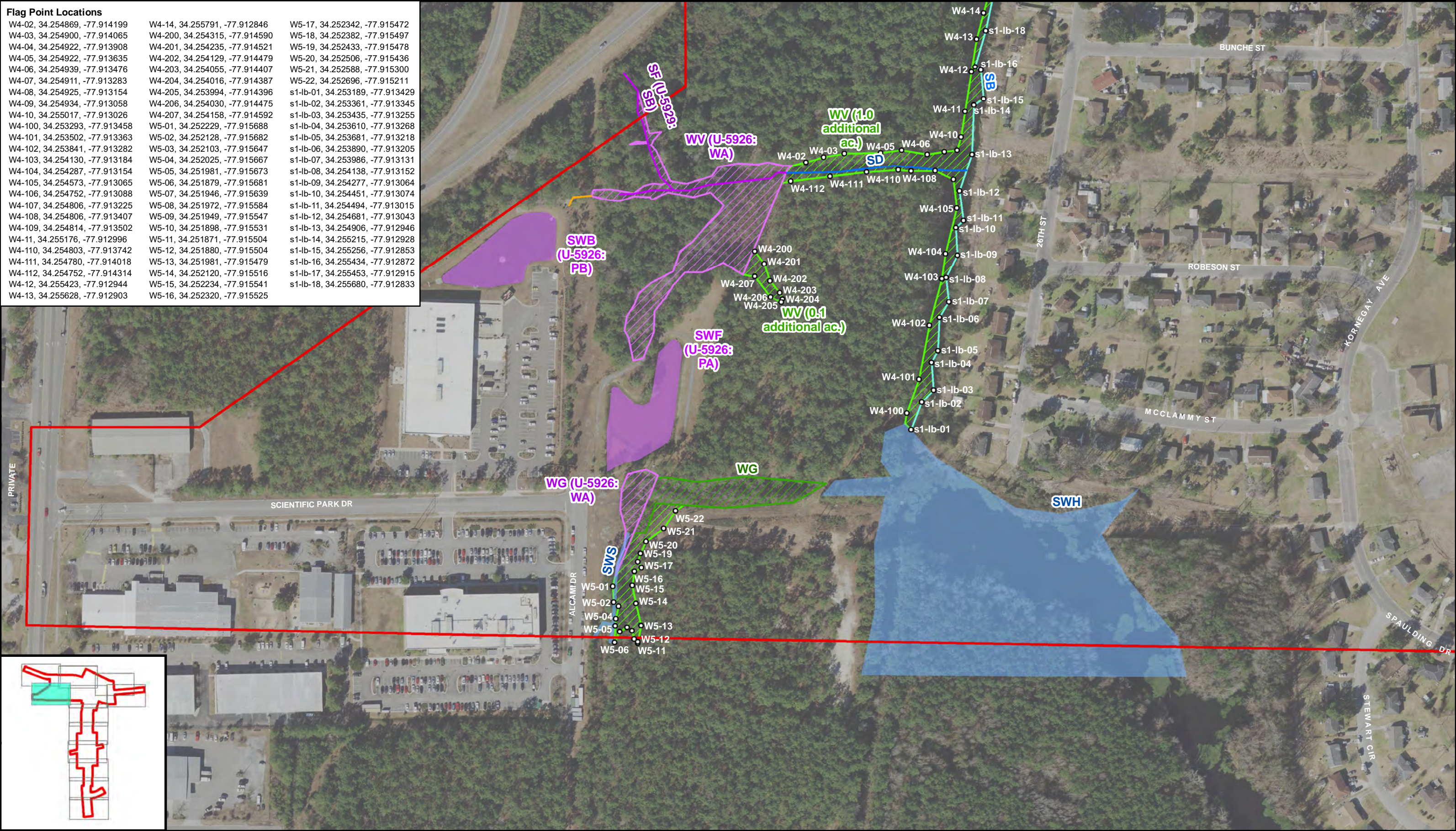
Service Layer Credits: NC Center for Geographic Information & Analysis



Div: 3	TIP# U-4434	Figure 3-4
Date: August 2019		

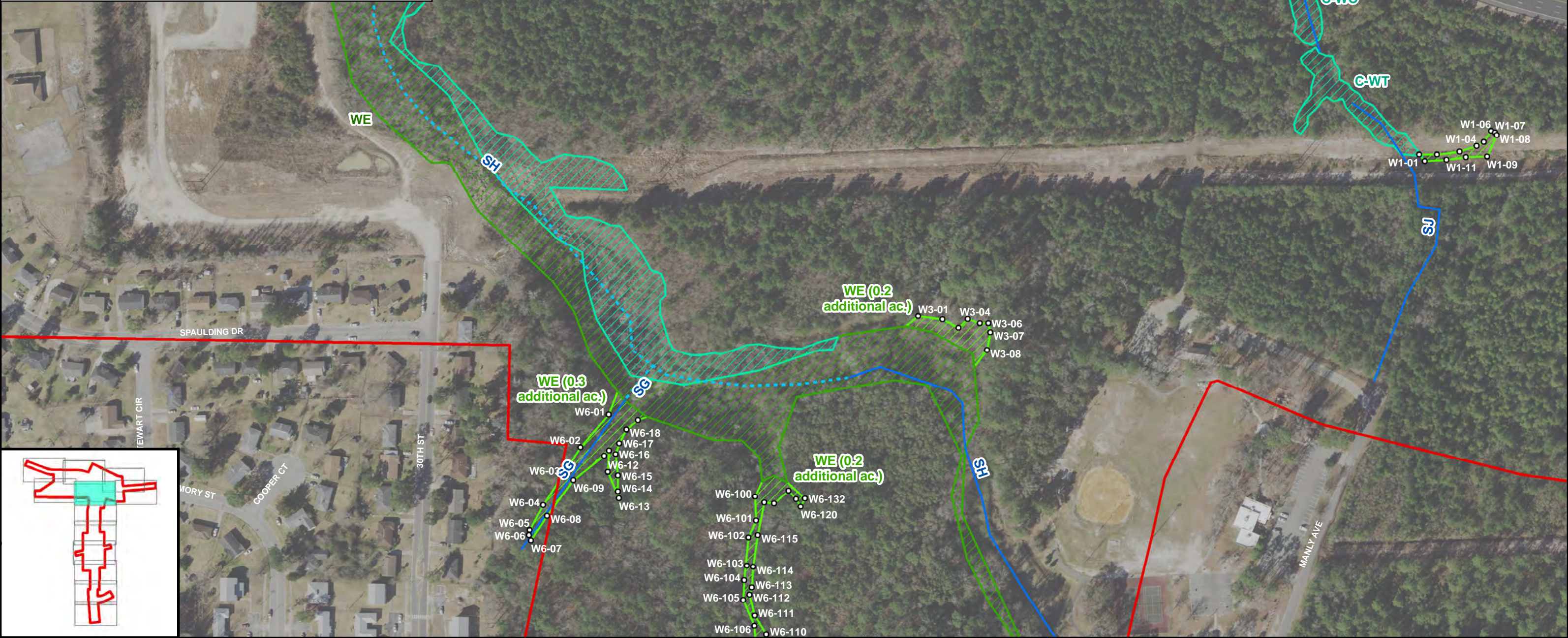
Flag Point Locations




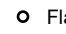
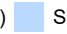

W4-02, 34.254869, -77.914199	W4-14, 34.255791, -77.912846	W5-17, 34.252342, -77.915472
W4-03, 34.254900, -77.914065	W4-200, 34.254315, -77.914590	W5-18, 34.252382, -77.915497
W4-04, 34.254922, -77.913908	W4-201, 34.254235, -77.914521	W5-19, 34.252433, -77.915478
W4-05, 34.254922, -77.913635	W4-202, 34.254129, -77.914479	W5-20, 34.252506, -77.915436
W4-06, 34.254939, -77.913476	W4-203, 34.254055, -77.914407	W5-21, 34.252588, -77.915300
W4-07, 34.254911, -77.913283	W4-204, 34.254016, -77.914387	W5-22, 34.252696, -77.915211
W4-08, 34.254925, -77.913154	W4-205, 34.253994, -77.914396	s1-lb-01, 34.253189, -77.913429
W4-09, 34.254934, -77.913058	W4-206, 34.254030, -77.914475	s1-lb-02, 34.253361, -77.913345
W4-10, 34.255017, -77.913026	W4-207, 34.254158, -77.914592	s1-lb-03, 34.253435, -77.913255
W4-100, 34.253293, -77.913458	W5-01, 34.252229, -77.915688	s1-lb-04, 34.253610, -77.913268
W4-101, 34.253502, -77.913363	W5-02, 34.252128, -77.915682	s1-lb-05, 34.253681, -77.913218
W4-102, 34.253841, -77.913282	W5-03, 34.252103, -77.915647	s1-lb-06, 34.253890, -77.913205
W4-103, 34.254130, -77.913184	W5-04, 34.252025, -77.915667	s1-lb-07, 34.253986, -77.913131
W4-104, 34.254287, -77.913154	W5-05, 34.251981, -77.915673	s1-lb-08, 34.254138, -77.913152
W4-105, 34.254573, -77.913065	W5-06, 34.251879, -77.915681	s1-lb-09, 34.254277, -77.913064
W4-106, 34.254752, -77.913088	W5-07, 34.251946, -77.915639	s1-lb-10, 34.254451, -77.913074
W4-107, 34.254806, -77.913225	W5-08, 34.251972, -77.915584	s1-lb-11, 34.254494, -77.913015
W4-108, 34.254806, -77.913407	W5-09, 34.251949, -77.915547	s1-lb-12, 34.254681, -77.913043
W4-109, 34.254814, -77.913502	W5-10, 34.251898, -77.915531	s1-lb-13, 34.254906, -77.912946
W4-11, 34.255176, -77.912996	W5-11, 34.251871, -77.915504	s1-lb-14, 34.255215, -77.912928
W4-110, 34.254803, -77.913742	W5-12, 34.251880, -77.915504	s1-lb-15, 34.255256, -77.912853
W4-111, 34.254780, -77.914018	W5-13, 34.251981, -77.915479	s1-lb-16, 34.255434, -77.912872
W4-112, 34.254752, -77.914314	W5-14, 34.252120, -77.915516	s1-lb-17, 34.255453, -77.912915
W4-12, 34.255423, -77.912944	W5-15, 34.252234, -77.915541	s1-lb-18, 34.255680, -77.912833
W4-13, 34.255628, -77.912903	W5-16, 34.252320, -77.915525	



Flag Point Locations

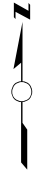
W1-01, 34.252741, -77.899830	W3-08, 34.251633, -77.902871	W6-110, 34.249995, -77.904437
W1-02, 34.252741, -77.899708	W6-01, 34.251284, -77.905522	W6-111, 34.250106, -77.904518
W1-03, 34.252756, -77.899549	W6-02, 34.251095, -77.905723	W6-112, 34.250229, -77.904551
W1-04, 34.252787, -77.899428	W6-03, 34.250944, -77.905843	W6-113, 34.250270, -77.904535
W1-05, 34.252811, -77.899378	W6-04, 34.250761, -77.905989	W6-114, 34.250389, -77.904524
W1-06, 34.252874, -77.899325	W6-05, 34.250617, -77.906085	W6-115, 34.250572, -77.904489
W1-07, 34.252865, -77.899299	W6-06, 34.250586, -77.906091	W6-116, 34.250762, -77.904440
W1-08, 34.252849, -77.899289	W6-07, 34.250557, -77.906078	W6-117, 34.250757, -77.904372
W1-09, 34.252727, -77.899357	W6-08, 34.250699, -77.905963	W6-118, 34.250830, -77.904270
W1-10, 34.252723, -77.899504	W6-09, 34.250904, -77.905775	W6-119, 34.250780, -77.904218
W1-11, 34.252710, -77.899641	W6-10, 34.251044, -77.905559	W6-12, 34.250950, -77.905535
W1-12, 34.252704, -77.899792	W6-100, 34.250798, -77.904505	W6-120, 34.250736, -77.904187
W3-01, 34.251836, -77.903350	W6-101, 34.250659, -77.904500	W6-13, 34.250797, -77.905459
W3-02, 34.251814, -77.903181	W6-102, 34.250559, -77.904555	W6-132, 34.250783, -77.904155
W3-03, 34.251764, -77.903068	W6-103, 34.250396, -77.904568	W6-14, 34.250837, -77.905464
W3-04, 34.251816, -77.903005	W6-104, 34.250313, -77.904589	W6-15, 34.250928, -77.905463
W3-05, 34.251791, -77.902918	W6-105, 34.250197, -77.904596	W6-16, 34.251053, -77.905479
W3-06, 34.251790, -77.902860	W6-106, 34.250047, -77.904520	W6-17, 34.251116, -77.905451
W3-07, 34.251736, -77.902847	W6-11, 34.251073, -77.905524	W6-18, 34.251196, -77.905401
		W6-19, 34.251249, -77.905320



Legend
 Study Area
 Approximate Stream Channel
 Wetland (2011)
 Flag Point (2019)
 Stream (2011)
 Wetland (Cameron Tract)

Joanne Steenhuis 10/30/2019

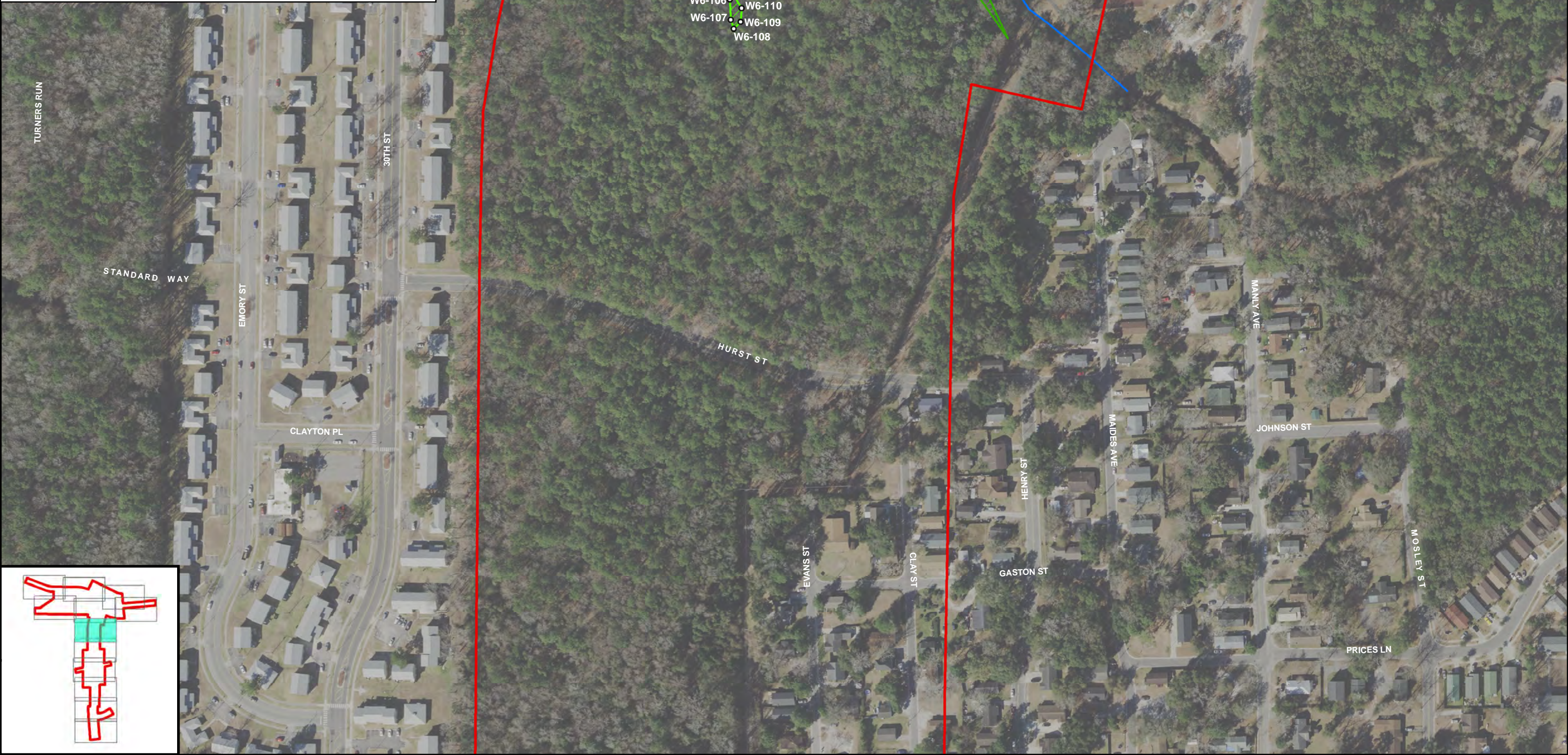
PRELIMINARY JURISDICTIONAL FEATURES MAP
 Independence Boulevard Extension
 New Hanover County, North Carolina
STIP U-4434
Service Layer Credits: NC Center for Geographic Information & Analysis

0 100 200 Feet


Div: 3	TIP# U-4434	Figure 3-6
Date: August 2019		

Flag Point Locations

W6-04, 34.250761, -77.905989	W6-105, 34.250197, -77.904596	W6-115, 34.250572, -77.904489
W6-05, 34.250617, -77.906085	W6-106, 34.250047, -77.904520	W6-116, 34.250762, -77.904440
W6-06, 34.250586, -77.906091	W6-107, 34.249929, -77.904515	W6-117, 34.250757, -77.904372
W6-07, 34.250557, -77.906078	W6-108, 34.249877, -77.904493	W6-118, 34.250830, -77.904270
W6-08, 34.250699, -77.905963	W6-109, 34.249917, -77.904445	W6-119, 34.250780, -77.904218
W6-100, 34.250798, -77.904505	W6-110, 34.249995, -77.904437	W6-120, 34.250736, -77.904187
W6-101, 34.250659, -77.904500	W6-111, 34.250106, -77.904518	W6-13, 34.250797, -77.905459
W6-102, 34.250559, -77.904555	W6-112, 34.250229, -77.904551	W6-132, 34.250783, -77.904155
W6-103, 34.250396, -77.904568	W6-113, 34.250270, -77.904535	W6-14, 34.250837, -77.905464
W6-104, 34.250313, -77.904589	W6-114, 34.250389, -77.904524	



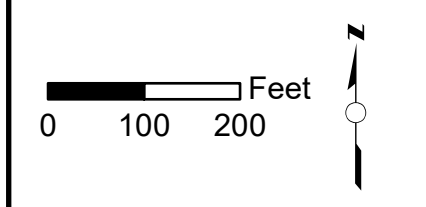
Legend

- Study Area
- Approximate Stream Channel
- Flag Point (2019)
- Wetland (2011)
- Stream (2011)
- Wetland (2019)

Joanne Steenhuis 10/30/2019

**PRELIMINARY JURISDICTIONAL
FEATURES MAP**
Independence Boulevard Extension
New Hanover County, North Carolina
STIP U-4434

Service Layer Credits: NC Center for Geographic Information & Analysis



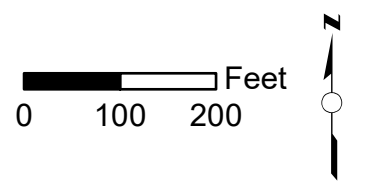
Div: 3	TIP# U-4434	Figure 3-7
Date: August 2019		



Legend
 Study Area
 Approximate Stream Channel

Joanne Steenhuis 10/30/2019

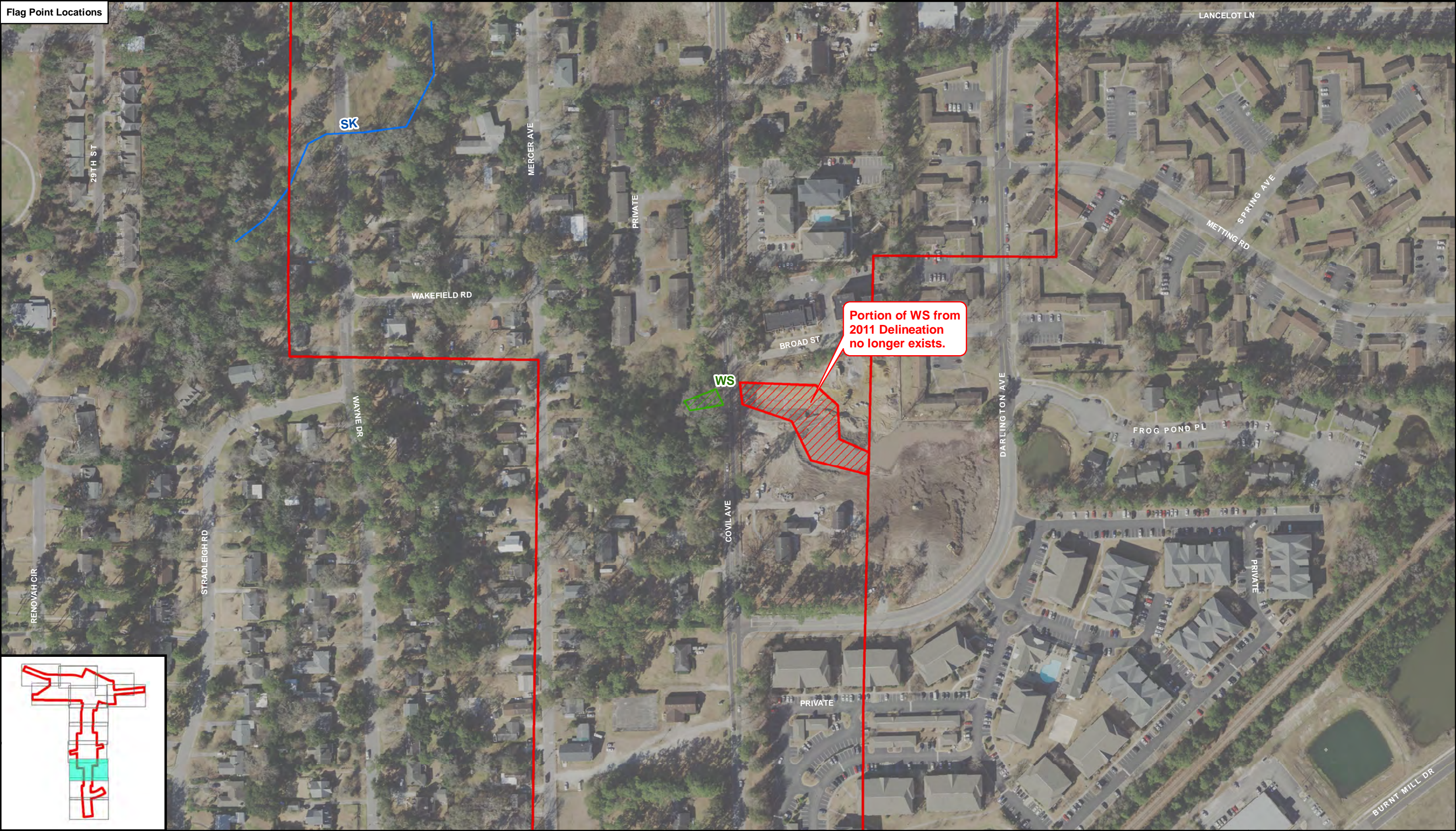
PRELIMINARY JURISDICTIONAL FEATURES MAP
 Independence Boulevard Extension
 New Hanover County, North Carolina
STIP U-4434
 Service Layer Credits: NC Center for Geographic Information & Analysis



Div: 3	TIP# U-4434
Date: August 2019	

Figure
3-8





Portion of WS from 2011 Delineation no longer exists.

