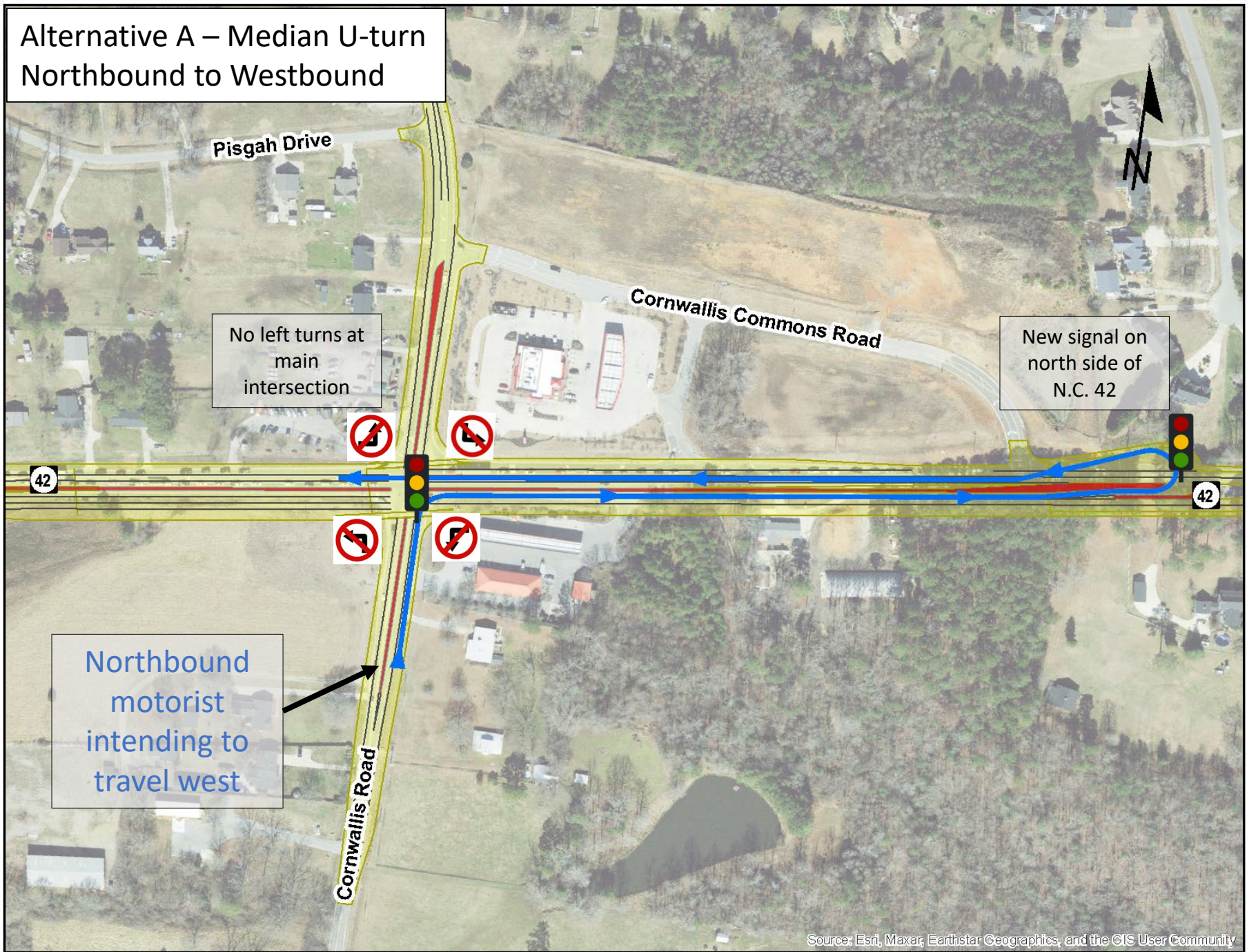


Alternative A – Median U-turn Northbound to Westbound



Pisgah Drive

No left turns at
main
intersection

Cornwallis Commons Road

New signal on
north side of
N.C. 42

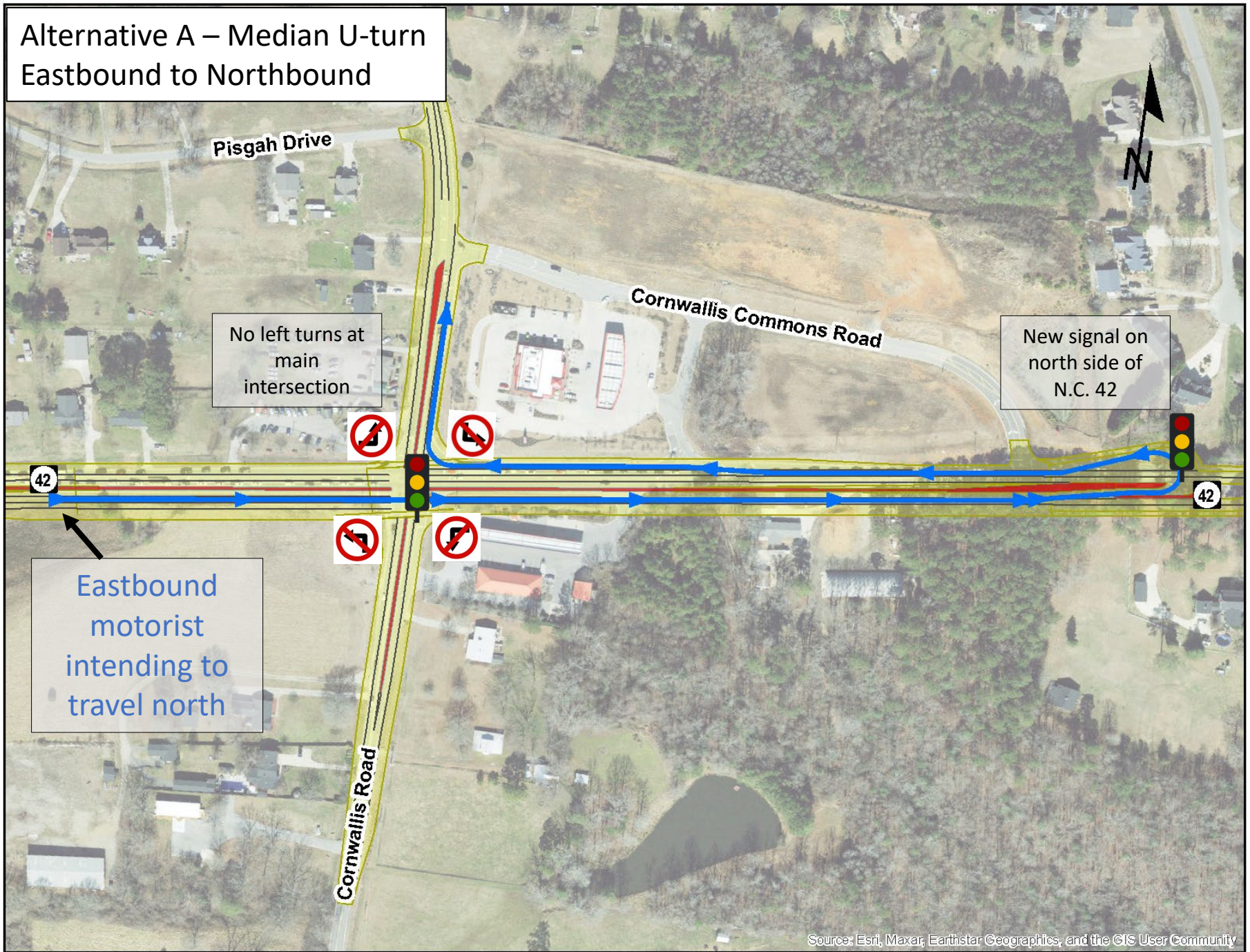
42

42

Northbound
motorist
intending to
travel west

Cornwallis Road

Alternative A – Median U-turn Eastbound to Northbound



Pisgah Drive

No left turns at
main
intersection

Cornwallis Commons Road

New signal on
north side of
N.C. 42

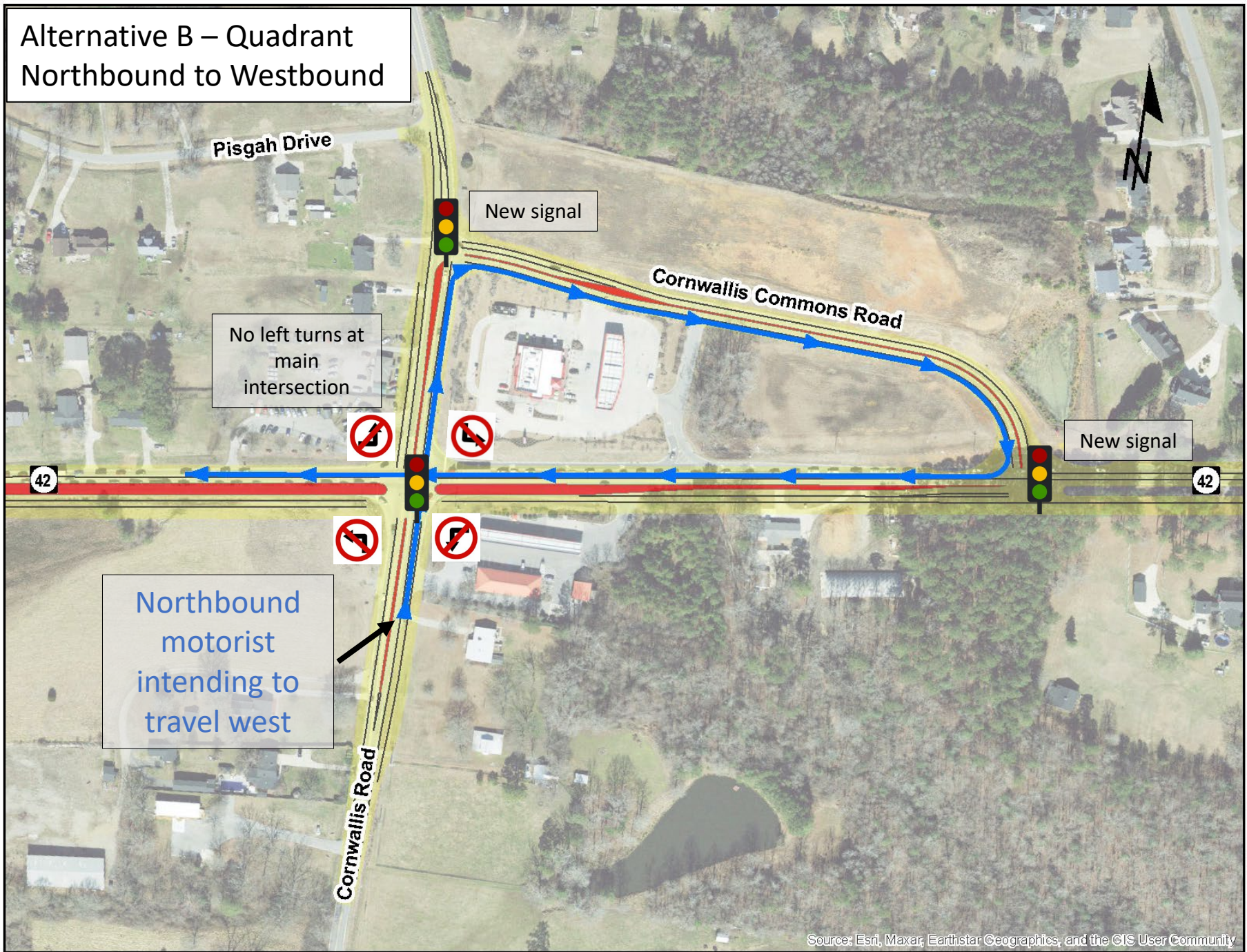
42

42

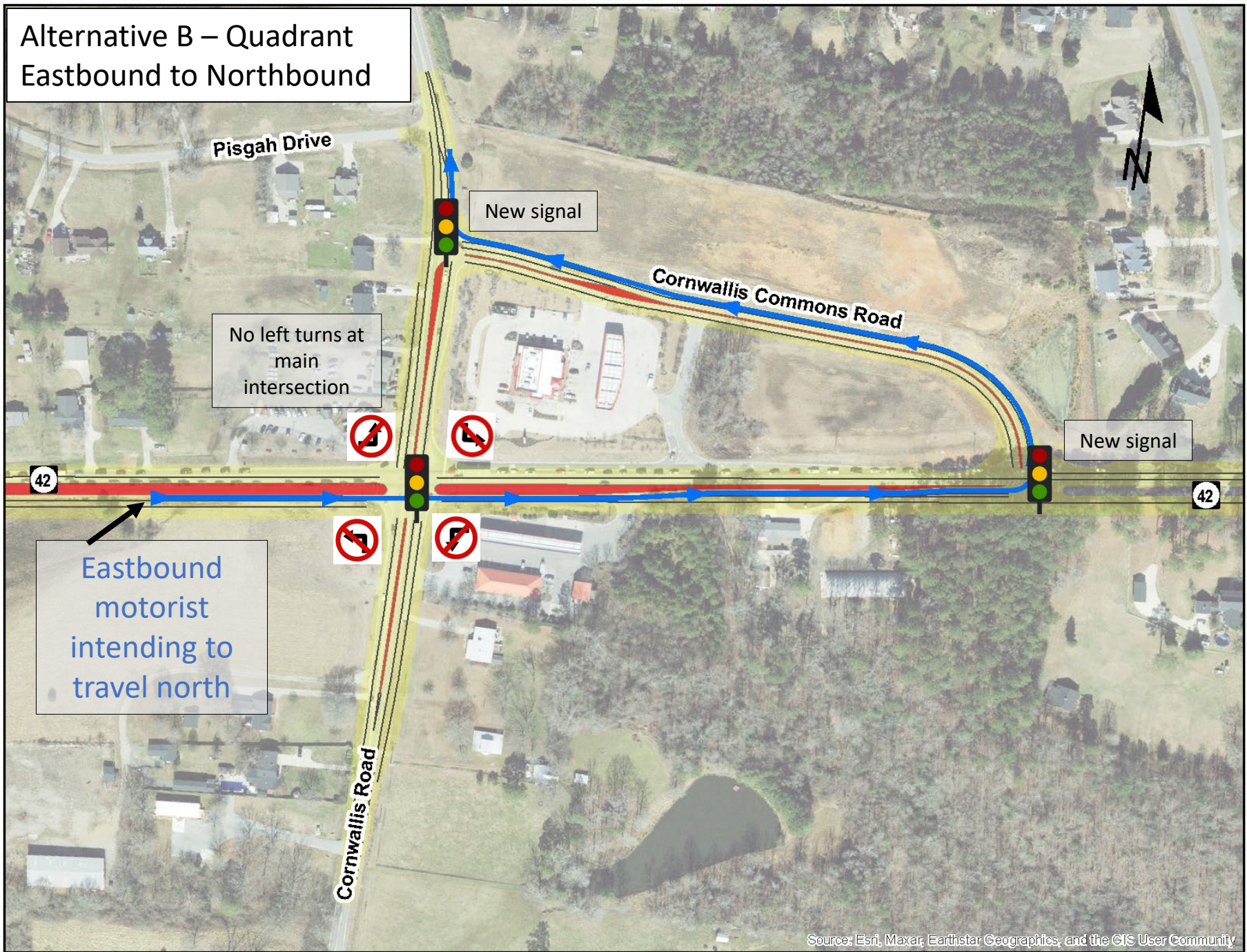
Eastbound
motorist
intending to
travel north

Cornwallis Road

Alternative B – Quadrant Northbound to Westbound



Alternative B – Quadrant Eastbound to Northbound



Pisgah Drive

New signal

No left turns at
main
intersection

Cornwallis Commons Road

New signal

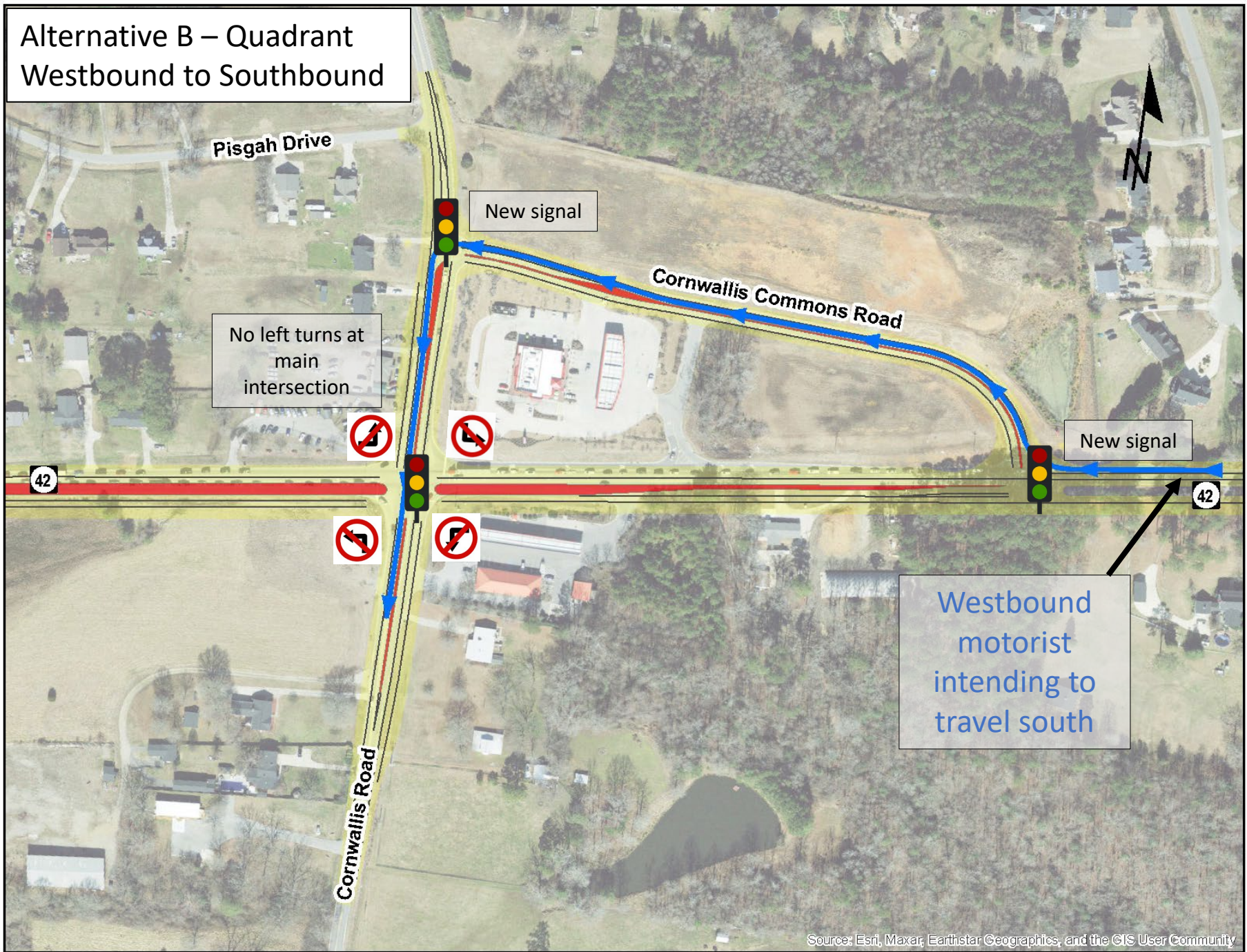
42

42

Eastbound
motorist
intending to
travel north

Cornwallis Road

Alternative B – Quadrant Westbound to Southbound



Pisgah Drive

New signal

Cornwallis Commons Road

No left turns at
main
intersection

New signal

42

42

Cornwallis Road

Westbound
motorist
intending to
travel south

Alternative B – Quadrant
Southbound to Eastbound

Southbound
motorist
intending to
travel east

Pisgah Drive

New signal

No left turns at
main
intersection

Cornwallis Commons Road

New signal

42

42

Cornwallis Road

