

Sandhills Area Improvements

Moore & Hoke Counties



PROJECT OVERVIEW & WHAT TO EXPECT DURING CONSTRUCTION



PROJECT
BACKGROUND



PROJECT AREA
AND HIGHLIGHTS



WHAT TRAVELERS
SHOULD EXPECT



WORK ZONE
SAFETY TIPS

Connecting people, products, and places safely and efficiently, with customer focus, accountability and environmental sensitivity to enhance the economy and vitality of North Carolina.



STAYING SAFE IN AN ACTIVE WORK ZONE

From 2019 to 2023, there were more than 32,000 crashes and 159 deaths in work zones across North Carolina. Speeding and distracted driving accounted for more than 50 percent of all work zone crashes in the state. Following these safety tips will help keep you and others safe on the road.

STAY ALERT: Dedicate your full attention to the roadway.

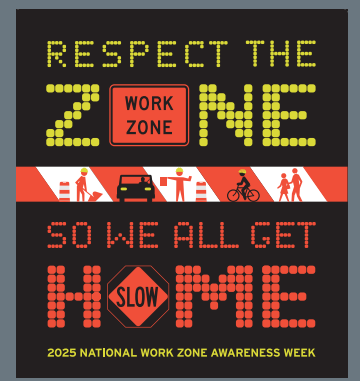
BE PATIENT: Don't tailgate or change lanes. Obey posted speed limits. The penalty for speeding through a marked work zone is \$250.

MINIMIZE DISTRACTIONS: Avoid changing radio stations and using mobile phones while driving through a work zone.

PAY CLOSE ATTENTION: Read signs and obey posted speed limits. Follow flaggers instruction.

BE SEEN: Turn on headlights so workers and other motorists can see you. Keep up with the traffic flow.

EXPECT THE UNEXPECTED: Keep an eye out for workers and their equipment. Watch out for road debris.



NEED MORE INFORMATION ?

VISIT OUR WEBSITE AND SIGN UP FOR UPDATES
[NCDOT.gov/projects/Sandhills-Improvement-Projects](https://www.ncdot.gov/projects/Sandhills-Improvement-Projects)

FIND LANE CLOSURES AND TRAFFIC INFO
[DriveNC.gov](https://www.driveNC.gov)

EMAIL US
Sandhills-Area-Projects@publicinput.com

CALL US
984-205-5615 — Enter Code 7275

VISIT OUR OFFICE
902 N. Sandhills Boulevard, Aberdeen, NC 28315 — By Appointment Only

FOLLOW US



@NCDOT



@NCDOT_Piedmont

Aquellas personas que no hablan inglés, o tienen limitaciones para leer, hablar o entender inglés, podrían recibir servicios de interpretación si los solicitan antes de la reunión llamando al 1-800-481-6494.

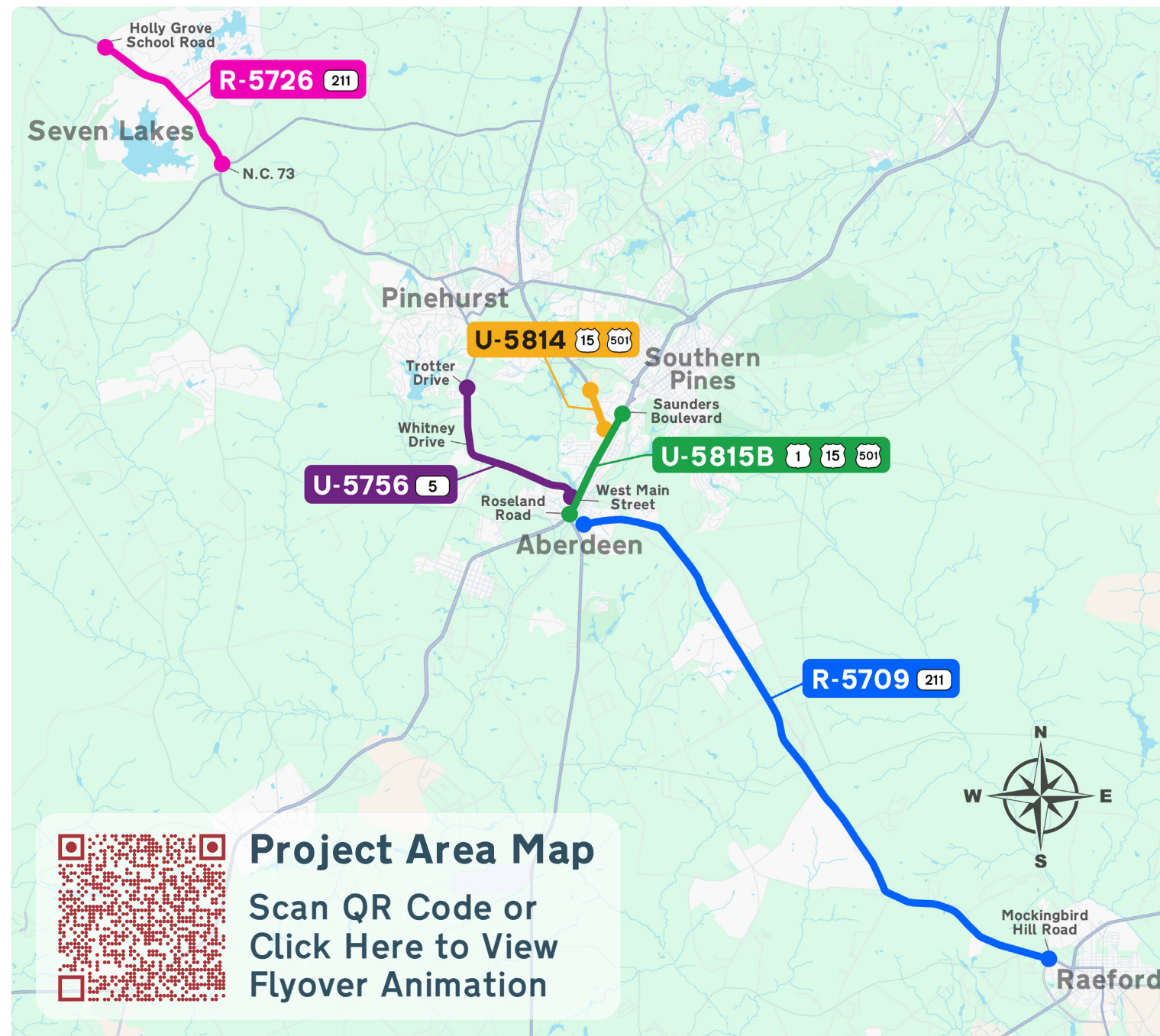


PROJECT BACKGROUND

As the Sandhills area continues to grow, improvements to major roadways are critical to support increasing traffic and reduce congestion. The N.C.

Department of Transportation is actively progressing several transportation improvement projects in the Sandhills region of Moore County and parts of Hoke County. These projects are upgrading roads, highways, and intersections along U.S. 15-501, U.S. 1, N.C. 5, and N.C. 211 — four busy corridors — to enhance safety, improve mobility, and support future growth.

Construction efforts began in 2024; it is anticipated that all improvements will be completed between early 2029 and 2033. You can learn more about each project by visiting the project website at [NCDOT.gov/projects/Sandhills-Improvement-Projects](https://www.ncdot.gov/projects/Sandhills-Improvement-Projects).



PROJECT AREA & HIGHLIGHTS

Note: All projects are labeled using their respective State Transportation Improvement Plan (STIP) number.

Reduced Conflict Intersection (RCI): Types of roadway designs that improve safety and reduce crashes, most commonly by redirecting drivers into turning right.

U.S. 15-501 (U-5814) — from U.S. 1 (Sandhills Boulevard) in Aberdeen to Brucewood Road in Southern Pines (1.3 miles)

Improvements: Adding a raised median, limiting left turns in most areas, and eliminating two-way center turn lanes by use of reduced conflict intersections (RCI).

U.S. 1 (U-5815B) — from Roseland Road to U.S. 15-501, and from West Main Street in Aberdeen to Old U.S. 1 in Southern Pines (2.6 miles)

Improvements: Adding a raised median, limiting left turns in most areas, reducing two-way center turn lanes by use of RCIs, realigning Roseland Road to 4-way intersection, adjusting turn movements at U.S. 1 / 15-501.

N.C. 5 (U-5756) — from U.S. 1 (Sandhills Boulevard) in Aberdeen to Blake Boulevard / Trotter Drive in Pinehurst (3.3 miles)

Improvements: Adding raised medians, limiting left turns in most areas, eliminating two-way center turn lanes by use of RCIs, and implementing a 10-foot multi-use path. Between Whitney Drive and Blake Boulevard / Trotter Drive, widen N.C. 5 to a variable 3-lane / 4-lane roadway.

N.C. 211 (R-5709) — from U.S. 15-501 in Aberdeen to West Palmer Street / Mockingbird Hill Road in Raeford (15.4 miles)

Improvements: Adding RCIs and widening N.C. 211 to four lanes (two in each direction) with grass medians. R-5709 has been separated into two parts, B and C. R-5709B (scheduled to begin in 2029) runs from U.S. 15-501 in Aberdeen to north of Ashemont Road. R-5709C (currently underway) runs from north of Ashemont Road to West Palmer Street / Mockingbird Hill Road in Raeford.

N.C. 211 (R-5726) — from Holly Grove School Road to N.C. 73 in West End (4 miles)

Improvements: Widening N.C. 211 to four lanes (two in each direction) with medians, inserting curbs and gutters, and adding a 14-foot outside lane for bicycles.



WHAT TRAVELERS SHOULD EXPECT DURING CONSTRUCTION

All Projects

- ▶ Access to businesses and residential areas maintained.
- ▶ Minimized impacts by separating traffic from construction.
- ▶ Trained flagger crews or automatic flaggers to safely direct traffic during construction.

U-5814, U-5815B, and U-5756

- ▶ Mainly nighttime work with lane closures.
- ▶ Daytime construction activities with minimal lane closures.

R-5709 and R-5726

- ▶ Mostly daytime work with possible nighttime work.
- ▶ Lane closures will aim to minimize traffic impacts.