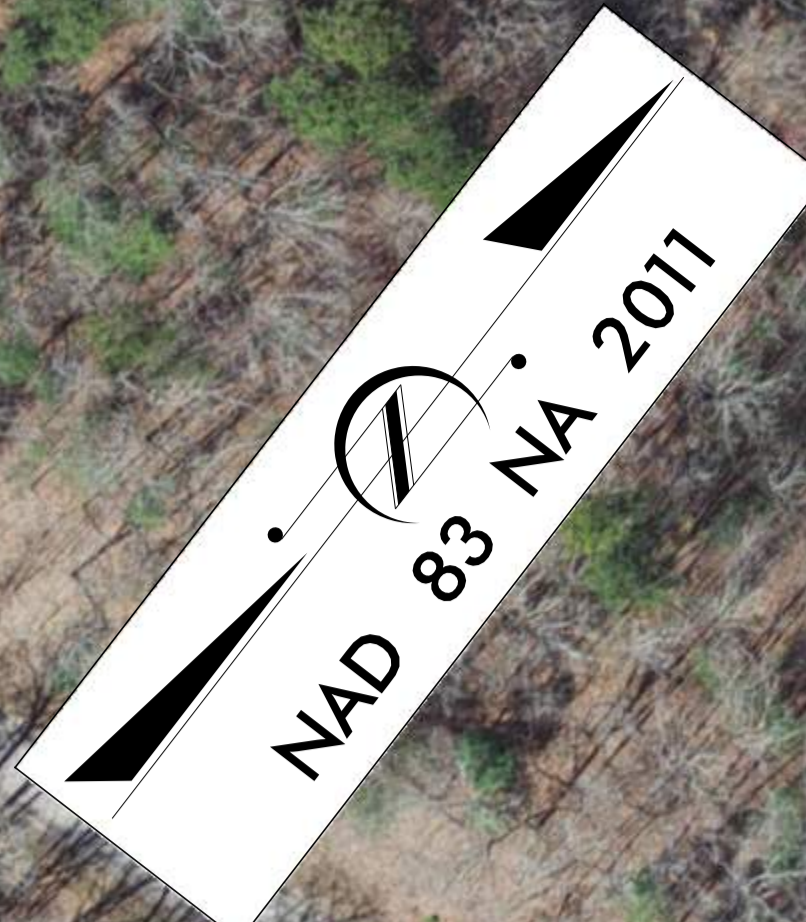


LEGEND

- BUILDINGS
- EXISTING RIGHT OF WAY
- PROPOSED RIGHT OF WAY
- PROPOSED EASEMENTS (DRAINAGE, CONSTRUCTION, AND UTILITY)
- EXISTING ROADWAY
- PROPOSED RESURFACING
- PROPOSED ROADWAY
- PROPOSED SIDEWALK, STRUCTURES, ISLAND, AND CURB AND GUTTER
- EXISTING SIDEWALK, STRUCTURES, ISLAND, AND CURB AND GUTTER TO BE RETAINED
- LAKES, RIVER, STREAMS AND PONDS
- PROPERTY LINES
- TOWN/CITY LIMITS
- PROPOSED CONTROL OF ACCESS



DESIGN PUBLIC MEETING MAP
R-5735
WBS 50193.1.1
CHEROKEE COUNTY
US 19, 64, 74, 129 SOUTH OF MURPHY
OCTOBER 2023



DESIGN DATA

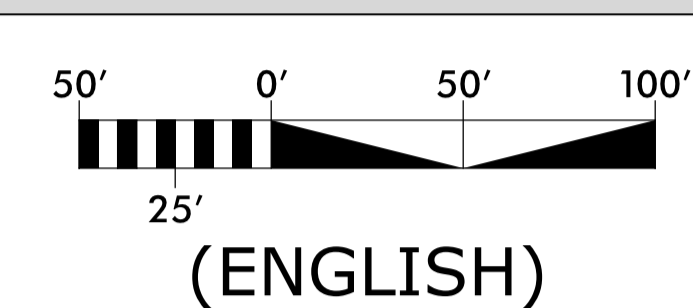
Functional Class. = Arterial
 Design Speed = 40/50 mph
 Max. Superelev. = 0.04

ORTHOPHOTO DATA

FLIGHT LINE ID = 20,21
 FLIGHT DATE = 04-01-2015

PRELIMINARY PLANS

DO NOT USE FOR CONSTRUCTION
INCOMPLETE PLANS
 DO NOT USE FOR R/W ACQUISITION

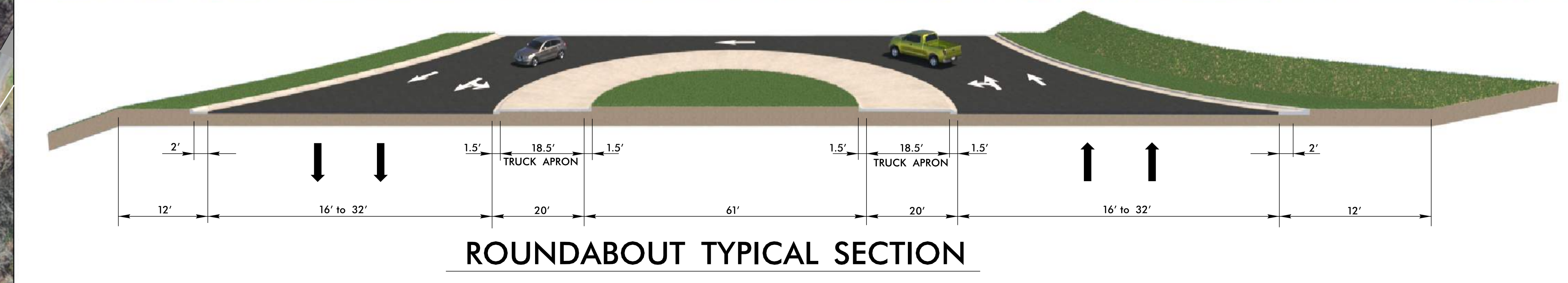
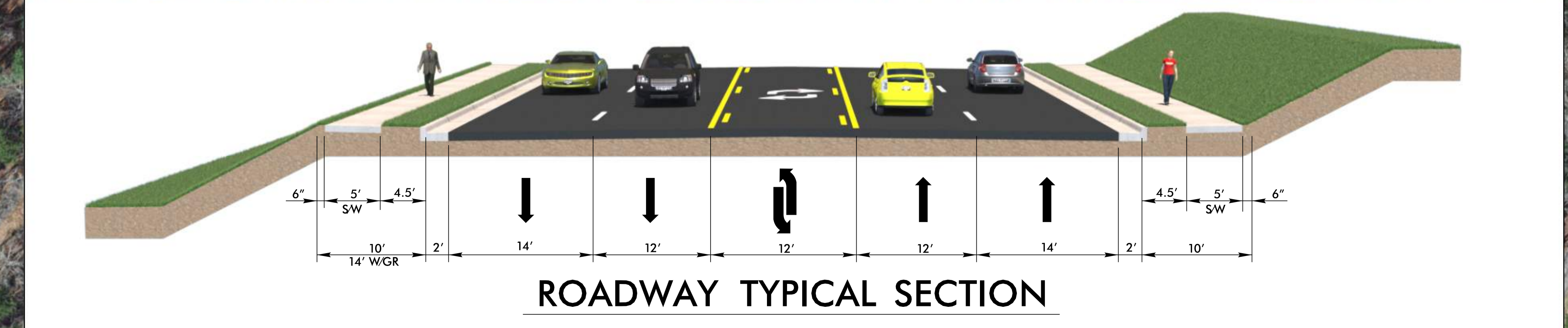


NOTE:
 FULL CONTROL OF ACCESS IS DEFINED AS A CONNECTION TO A FACILITY PROVIDED ONLY VIA RAMPS AT INTERCHANGES. ALL CROSS-STREETS ARE GRADE SEPARATED. NO PRIVATE DRIVEWAY CONNECTIONS ARE ALLOWED.

SIDEWALK NOTE
 SIDEWALK IS SUBJECT TO MUNICIPAL AGREEMENT

DRIVEWAY NOTE
 ALL DRIVEWAYS ARE NOT SHOWN, AS MAPS ARE BASED ON PRELIMINARY PLANS AND ARE SUBJECT TO CHANGE. DRIVEWAY LOCATION WILL BE FINALIZED AT A LATER DATE.

UTILITY NOTE
 TO PROVIDE GREATER VISUAL CLARITY, EXISTING AND PROPOSED UTILITIES ARE NOT SHOWN ON THESE MAPS OR ON OTHER DISPLAYS. THE UTILITY INFORMATION SHOWN ON THESE MAPS IS LIMITED TO LOCATIONS OF MAJOR EXISTING AND POTENTIAL UTILITY EASEMENTS. THE DESIGNS SHOWN ON THESE MAPS, INCLUDING UTILITY EASEMENTS, ARE PRELIMINARY AND ARE SUBJECT TO CHANGE.



DESIGN PUBLIC MEETING MAP
R-5735
WBS 50193.1.1
CHEROKEE COUNTY
US 19, 64, 74, 129 SOUTH OF MURPHY
OCTOBER 2023

DESIGN PUBLIC MEETING MAP
R-5735
WBS 50193.1.1
CHEROKEE COUNTY
US 19, 64, 74, 129 SOUTH OF MURPHY
OCTOBER 2023

- 1 HARRY SANDALL DOCKERY & VICTORIA L DOCKERY TRUSTEES
- 2 DOCKERY REAL ESTATE, LLC
- 3 JOHN BRUCE REVOCABLE FAMILY TRUST DEBORAH BRUCE, TRUSTEE
- 4 CAROLINA ORTHOPEDIC MASSAGE, LLC