



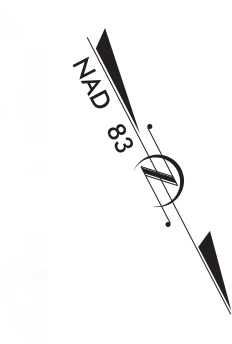
US 70 HAVELOCK DESIGN PUBLIC MEETING MAP

CRAVEN COUNTY

WBS #34360.1.2

F.A. #NH-70(49)

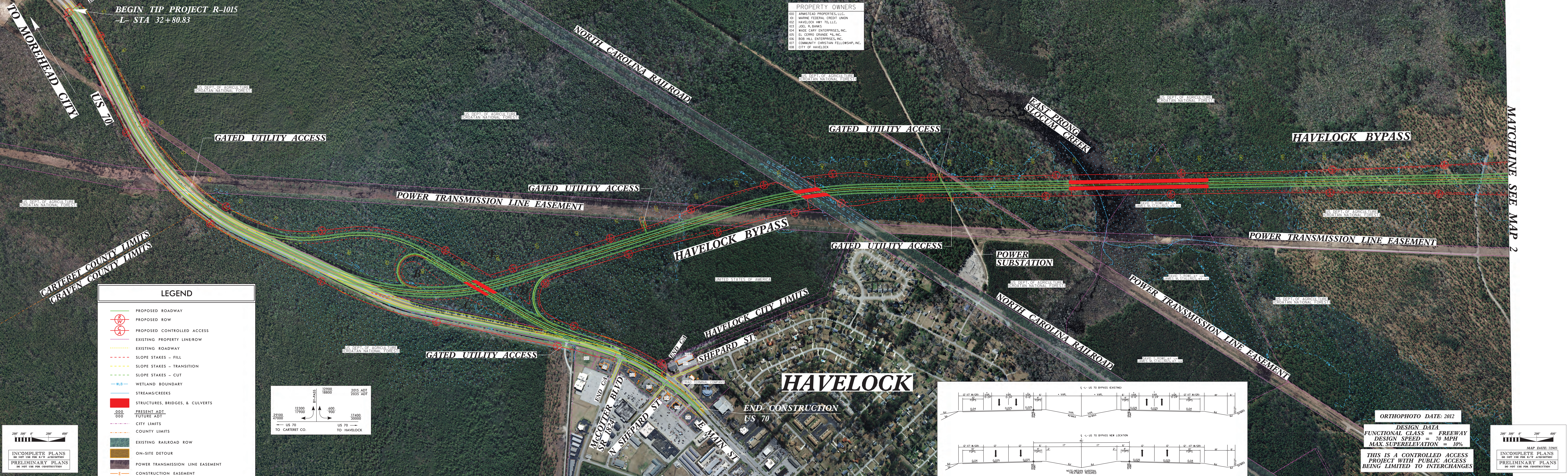
MAP 1 OF 3



BEGIN TIP PROJECT R-1015
-L- STA 32+80.83

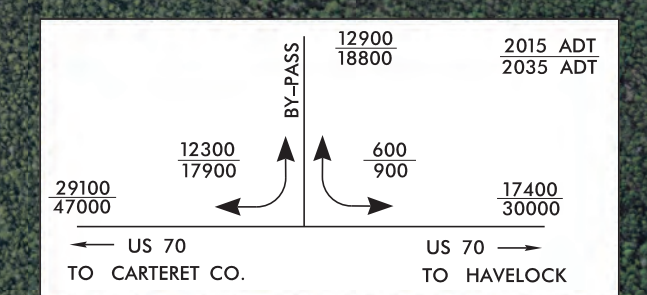
PROPERTY OWNERS

100	ARMSTEAD PROPERTIES, LLC.
101	MARINE FEDERAL CREDIT UNION
102	HAVELOCK HWY TO, LLC.
103	JOEL R. BANKS
104	WADE CARY ENTERPRISES, INC.
105	EL CERRO GRANDE #6, INC.
106	BOB HILL ENTERPRISES, INC.
107	COMMUNITY CHRISTIAN FELLOWSHIP, INC.
108	CITY OF HAVELOCK



LEGEND

- PROPOSED ROADWAY
- PROPOSED ROW
- PROPOSED CONTROLLED ACCESS
- EXISTING PROPERTY LINEROW
- EXISTING ROADWAY
- SLOPE STAKES - FILL
- SLOPE STAKES - TRANSITION
- SLOPE STAKES - CUT
- WETLAND BOUNDARY
- STREAMS/CREEKS
- STRUCTURES, BRIDGES, & CULVERTS
- PRESENT ADT
- FUTURE ADT
- CITY LIMITS
- COUNTY LIMITS
- EXISTING RAILROAD ROW
- ON-SITE DETOUR
- POWER TRANSMISSION LINE EASEMENT
- CONSTRUCTION EASEMENT



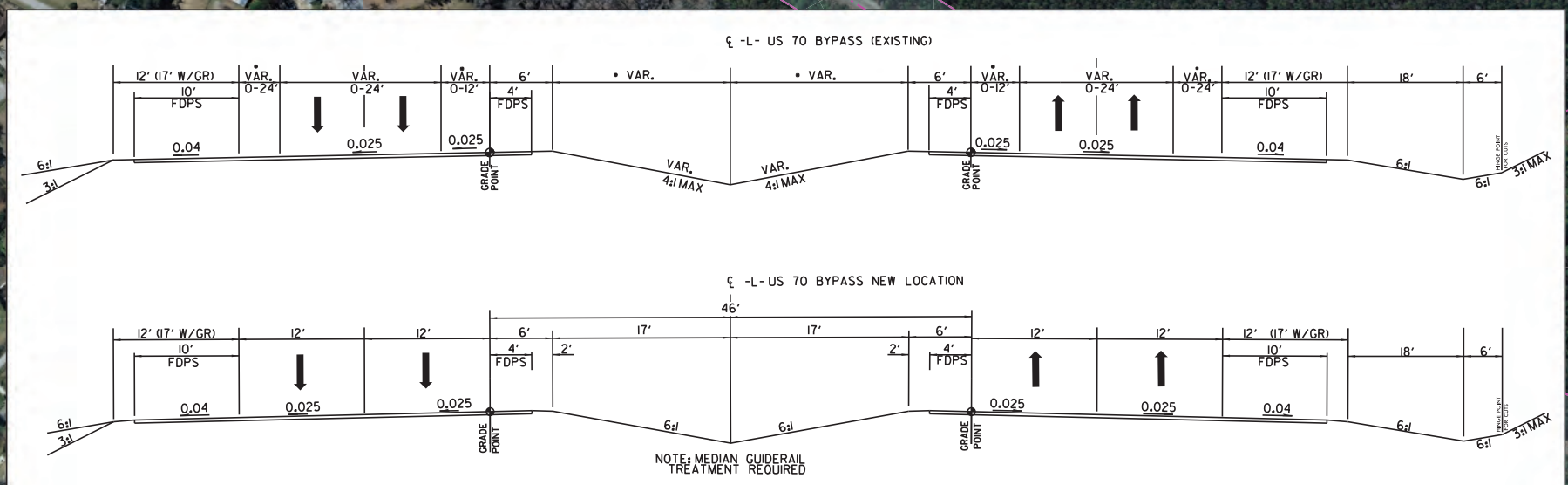
200' 100' 0' 200' 400'

INCOMPLETE PLANS
DO NOT USE FOR A.P. ACQUISITION
PRELIMINARY PLANS
DO NOT USE FOR CONSTRUCTION

200' 100' 0' 200' 400'

MAP DATE: 2/29/15

INCOMPLETE PLANS
DO NOT USE FOR A.P. ACQUISITION
PRELIMINARY PLANS
DO NOT USE FOR CONSTRUCTION



ORTHOPHOTO DATE: 2012

DESIGN DATA
FUNCTIONAL CLASS = FREEWAY
DESIGN SPEED = 70 MPH
MAX. SUPERELEVATION = 10%

THIS IS A CONTROLLED ACCESS
PROJECT WITH PUBLIC ACCESS
BEING LIMITED TO INTERCHANGES

MATCHLINE SEE MAP 2