



NC FIRST COMMISSION

APRIL 24, 2020

Connecting for Solutions

UNDERSTANDING DIFFERENCES

FINDING COMMON GROUND



24 April 2020

**CONNECTING
FOR SOLUTIONS**

[TETCOALITION.ORG](https://tetcoalition.org)







5 NCAA Titles

DURHAM CHAPEL HILL
←-----→
9.8 MILES



7 NCAA Titles

Ucla

11 NCAA Titles

DEFEATED DUKE 1964



DEFEATED UNC 1968





24 April 2020

**CONNECTING
FOR SOLUTIONS**

TETCOALITION.ORG

IT'S THE LITTLE DETAILS THAT
ARE **VITAL.**

LITTLE THINGS MAKE
BIG THINGS HAPPEN.

COACH JOHN WOODEN

FOR 25 YEARS
WE'VE BEEN IN THE DETAILS

BUSINESS



17 States + D.C.

In the Corridor

For over 25 years, the Coalition has brought together public agencies across state lines and modes to work together to address pressing challenges.

Connecting for Solutions



WHAT WE DO



PEOPLE

- Create a forum for public agencies to address transportation issues of common interest
- Establish a key network of transportation professionals
- Provide training (e.g., Freight Academy)



TOOLS & DATA

- Support data acquisition and tool development

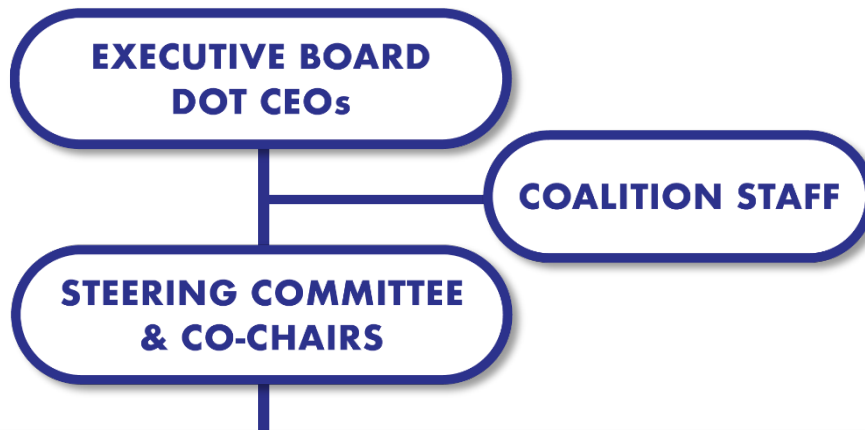


RESOURCES

- Compete for grants
- Extension of agency staff
- Partner with FHWA to explore policy implementation



THE COALITION STRUCTURE



PROGRAM TRACK COMMITTEES

TRANSPORTATION SYSTEMS MANAGEMENT & OPERATIONS

VPP MARKETPLACE
DATA TOOLS & USER GROUPS
TRAVELER INFORMATION
TRAFFIC INCIDENT /
EVENT MANAGEMENT
OPERATIONS ACADEMY

INTERMODAL FREIGHT

FREIGHT PLANNING
FREIGHT DATA
TRUCK PARKING
SUPPLY CHAIN PERFORMANCE
FREIGHT ACADEMY

INNOVATION IN TRANSPORTATION

CONNECTED &
AUTONOMOUS VEHICLE
TOLLING RECIPROCITY
MILEAGE-BASED USER FEE

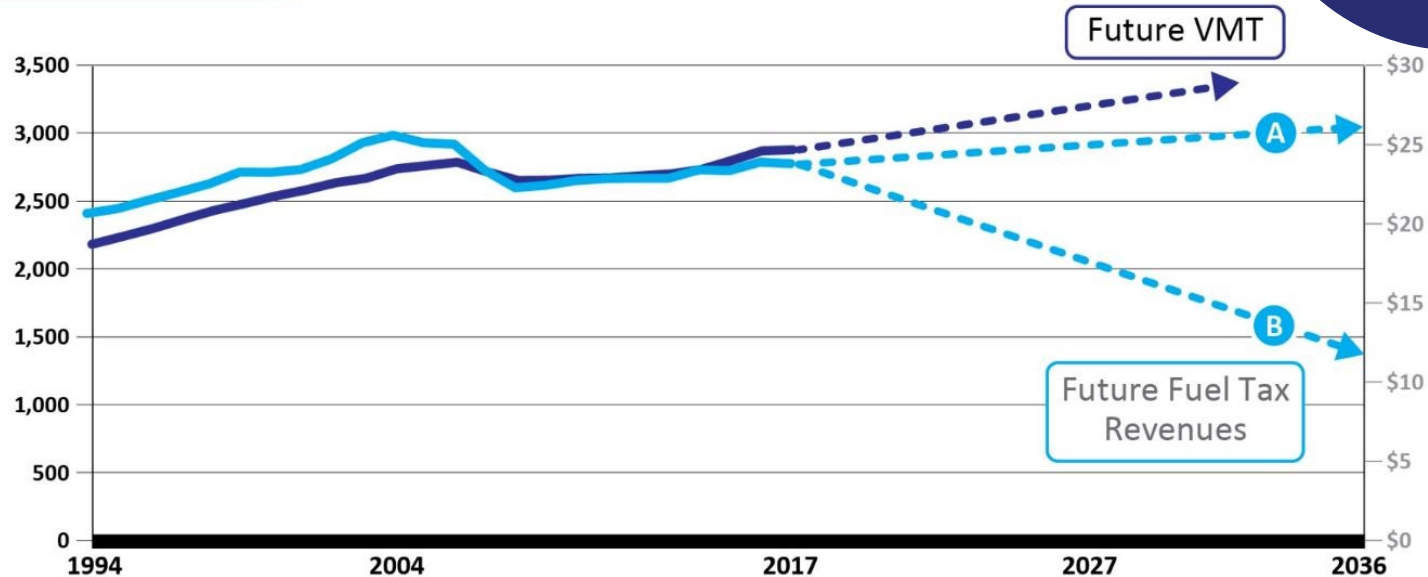
Why MBUF?

39%

Decrease in purchasing power of federal fuel tax since 1993

Light Duty VMT (billions)

Light Duty Federal Fuel Tax Revenues (billions)





The fleet is changing.

NCDOT Electric Vehicle
Planning:

2018: 6,000 → 2025: 80,000



COMMON GROUND:

Drivers have no idea how little
they are paying in gas tax.



WHAT EXPLORATION IS HAPPENING IN NORTH CAROLINA?



SMALL PILOT TO START THE DISCUSSION WITH NORTH CAROLINA RESIDENTS.



FOUR FOCUS AREAS

- ✓ OUT-OF-STATE MILEAGE: How will travel across state boundaries be managed?
- ✓ TOLLING: What is the relationship between tolling and MBUF?
- ✓ TRUCKING: How does a user-fee fit into the complex motor carrier operating environment?
- ✓ AMENITIES: Will value-added amenities help with public acceptance?



CURRENTLY CONDUCTING A
PRELIMINARY SURVEY TO
SEE WHAT RESIDENTS THINK
ABOUT MBUF.



ANALYZING HOW A SHIFT TO AN MBOF WILL EFFECT URBAN AND RURAL AREAS.



SLOW AND STEADY

Understanding is Key



BUILD COMMON UNDERSTANDING OF ISSUES

- Bring lessons learned from prior study phases.
- Identify similarities and differences.
- Help stakeholders better understand the issues facing North Carolina.



ADDRESS NORTH CAROLINA SPECIFIC CONCERNS

- North Carolina has unique issues and concerns.
- The study will help to identify those challenges.



LAY OUT OPTIONS FOR POTENTIAL NEXT STEPS

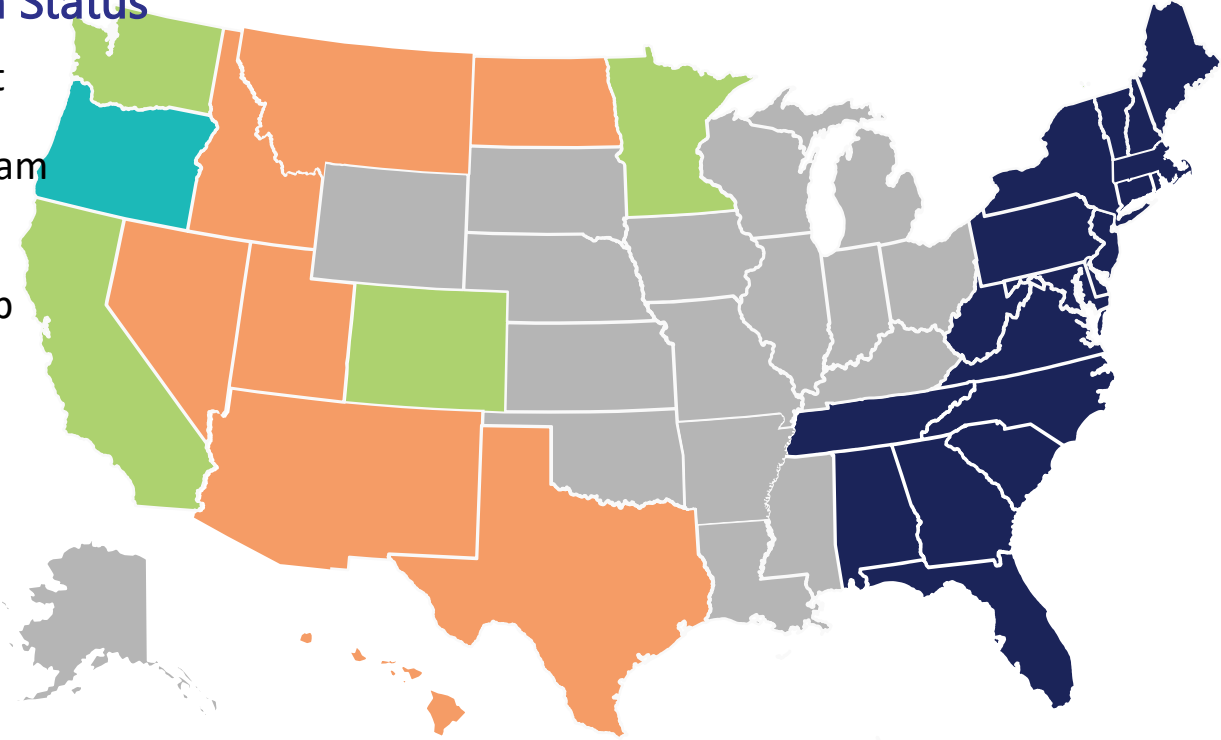
- This is about working with stakeholders to identify options and plan for the future.
- The study will help to inform next steps.



Why explore MBOF in NC?

2016 MBUF Exploration Status

- Conducted MBUF Pilot
- On-going MBUF Program
- MBUF Studies through RUC West Membership



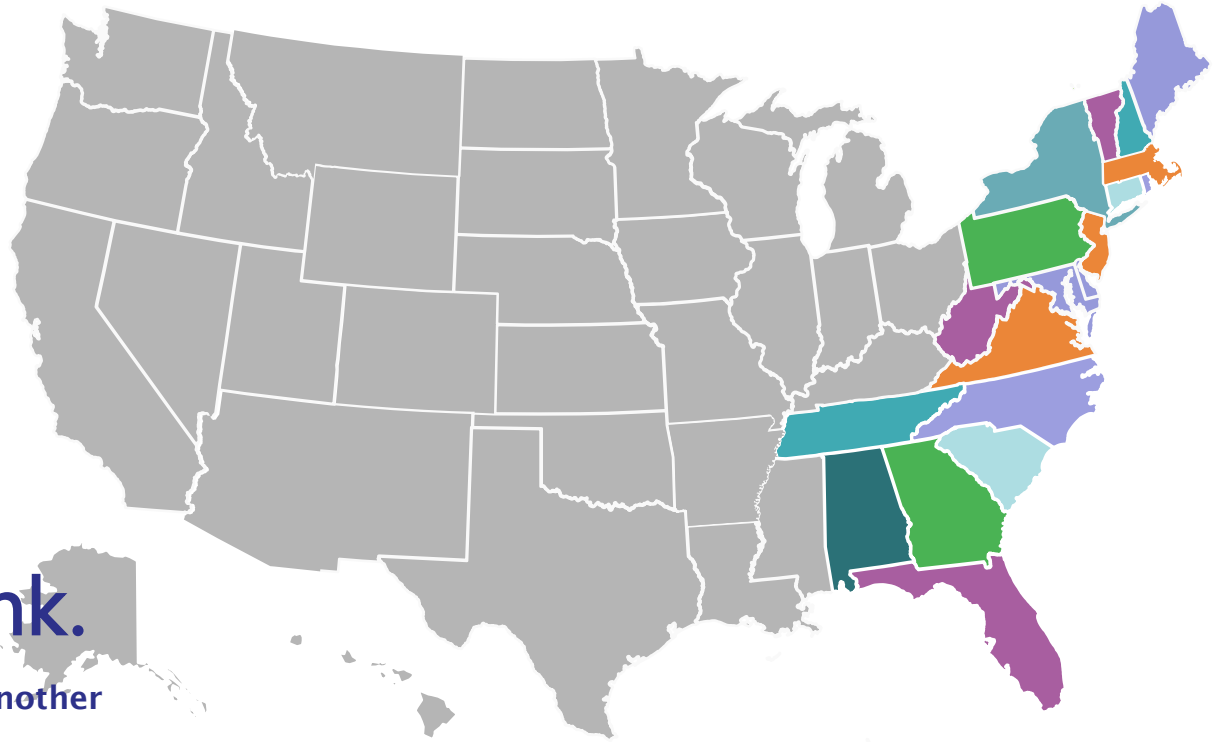
We are different.

East Coast Voice Needed

More alike than we think.

We can learn from one another

Adding our unique Eastern voice to the national conversation, while respecting differences within member states.





More alike
than we think.

Boone, North Carolina



Poughkeepsie, New York

Philadelphia, Pennsylvania

Charlotte, North Carolina

More alike
than we think.

21 April 2020

CONNECTING
FOR SOLUTIONS

TETC.COM



More alike
than we think.

Cape Hatteras, North Carolina



West Quoddy Head, Maine



More alike
than we think.

Chapel Hill, North Carolina



Cambridge, Massachusetts

UNDERSTANDING DIFFERENCES

FINDING COMMON GROUND



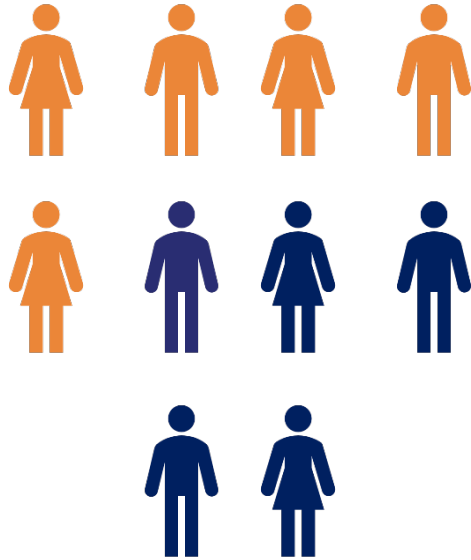
COMMON GROUND:

The public is uncertain about the future but expects government to be prepared.

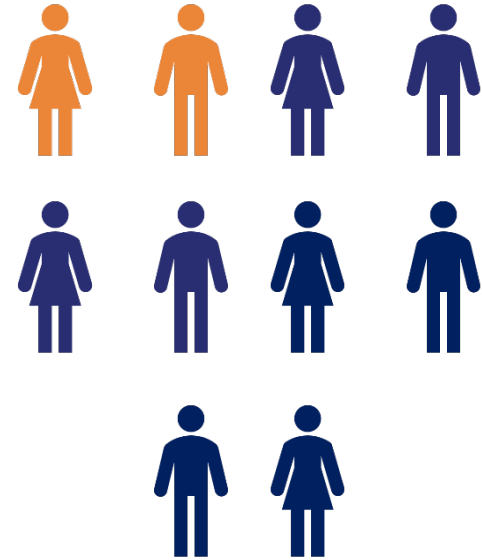


COMMON GROUND:

Privacy is a concern for both urban and rural participants in previous study phases.



PRE-STUDY VERY
CONCERNED ABOUT
PRIVACY (46%)



POST STUDY VERY
CONCERNED ABOUT
PRIVACY (20%)



COMMON GROUND:

We are the only study that has
**worked directly with trucking
industry** to address their concerns.



NO DECISIONS
ARE BEING MADE

THE STUDY IS
HELPING TO
BETTER
UNDERSTAND
POTENTIAL
FUTURE
OPTIONS.

BETTER TOGETHER



CONNECTING FOR SOLUTIONS



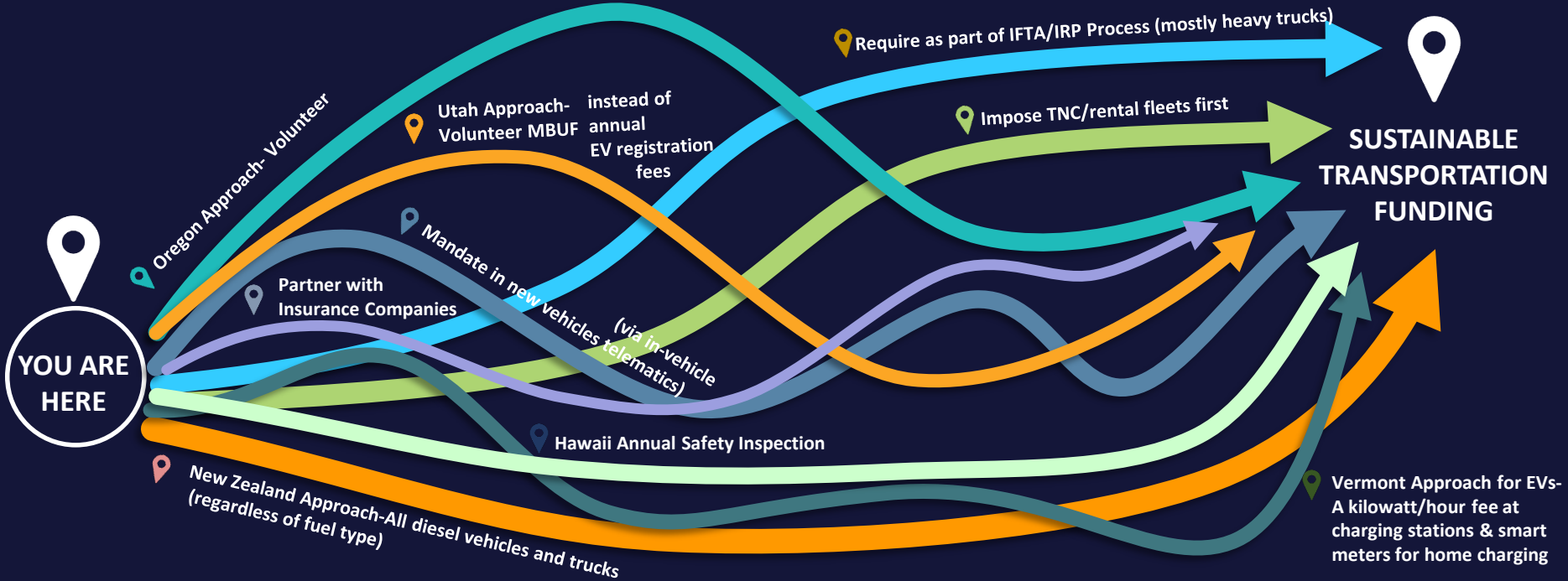
HOW DOES NORTH CAROLINA MOVE FORWARD?



BRING IN THE VOICE OF THE
GENERAL PUBLIC.



MANY PATHS



THANK YOU!

— THE EASTERN
TRANSPORTATION
COALITION

CONNECTING FOR SOLUTIONS





QUESTIONS?

Connecting for Solutions