

S-LINE TOD STUDY

ADVISORY COMMITTEE BRIEFING

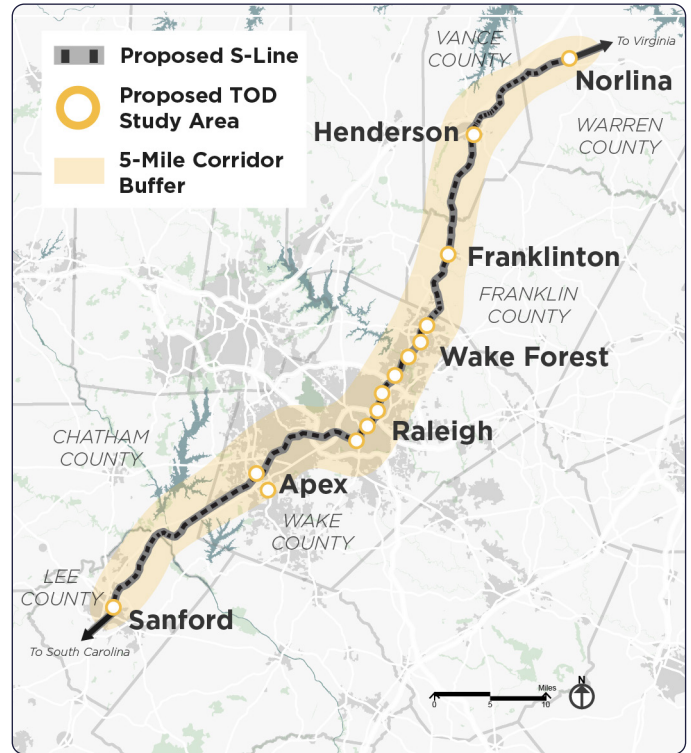


February 2022

Description & Purpose

The NCDOT Integrated Mobility Division is leading a transit-oriented development (TOD) planning initiative for seven communities on a 95-mile-long section of the S-Line rail corridor. This segment of the S-Line is a key missing link within the larger vision for passenger rail service in the Southeast Corridor. In order to better prepare adjacent communities for the possibility of future rail service, this study will evaluate potential TOD opportunities in Sanford, Apex, Raleigh, Wake Forest, Franklinton, Henderson, and Norlina.

The S-Line TOD Planning Study will evaluate market conditions, affordable housing considerations, multi-modal transportation opportunities, and regulatory conditions in the various jurisdictions. *The study will deliver a vision for future transit-oriented development that is responsive to the communities' individual needs and contexts.*



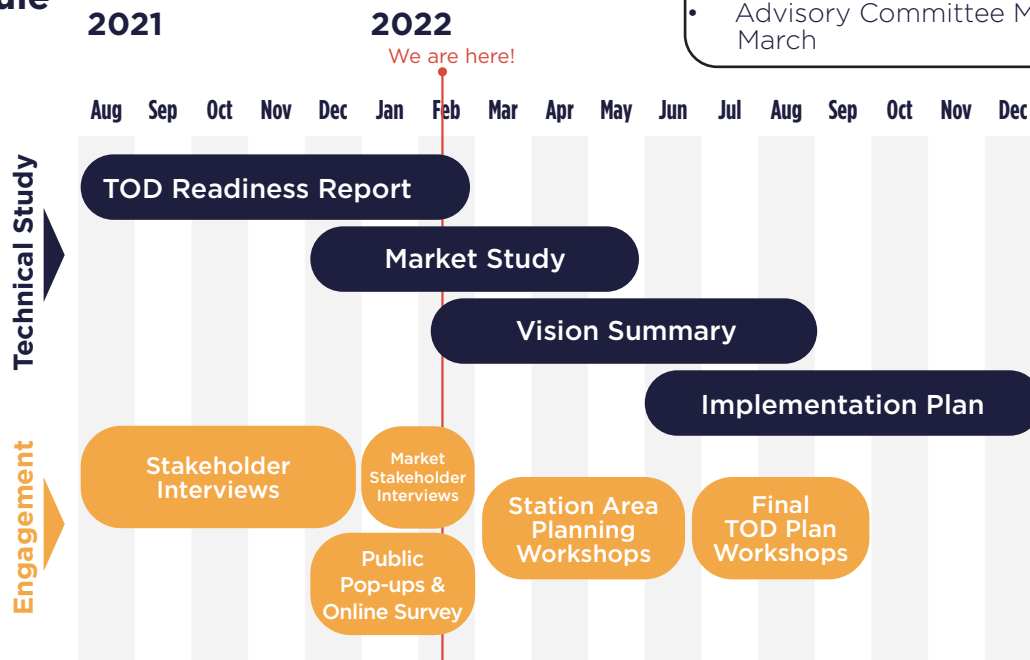
Past and Ongoing Activities

- Held 7 community engagement pop-up meetings in December, one in each community
- Collected community input from online survey which closed on January 31st
- Continue market study and stakeholder interviews
- Continue preparing the S-Line TOD Readiness Report

Upcoming Activities:

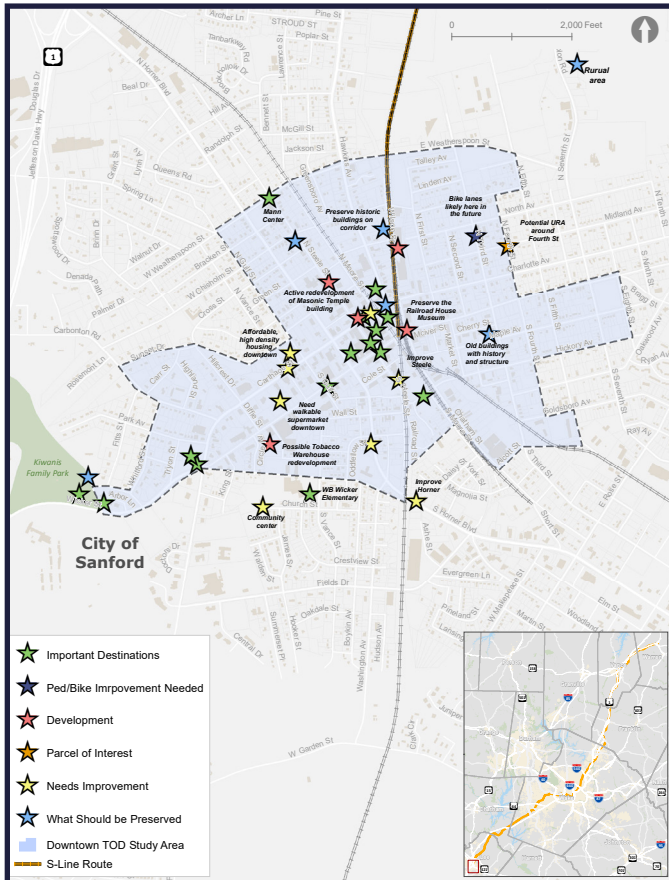
- Project Website
- Technical Committee Meeting on 3/1/2022
- Advisory Committee Meeting at the end of March

Schedule



Sanford Community Engagement Summary

The project team held a community pop-up meeting in Sanford in December 2021 and engaged with **over 70 community members**. In addition, **around 70 Sanford residents** have taken the online S-Line TOD Planning Public Survey to provide their thoughts on future goals related to the S-Line. The map below highlights key areas of focus from these two efforts.



Key areas of focus from community engagement in Sanford



Key Input Theme: Preserve small-town feel and rural environment, and enhance neighborhood connections

Top Votes for Outcomes the Community Would Like to See:

- Providing new transportation options within the region
- Preserving rural and natural areas
- Supporting existing and new small businesses

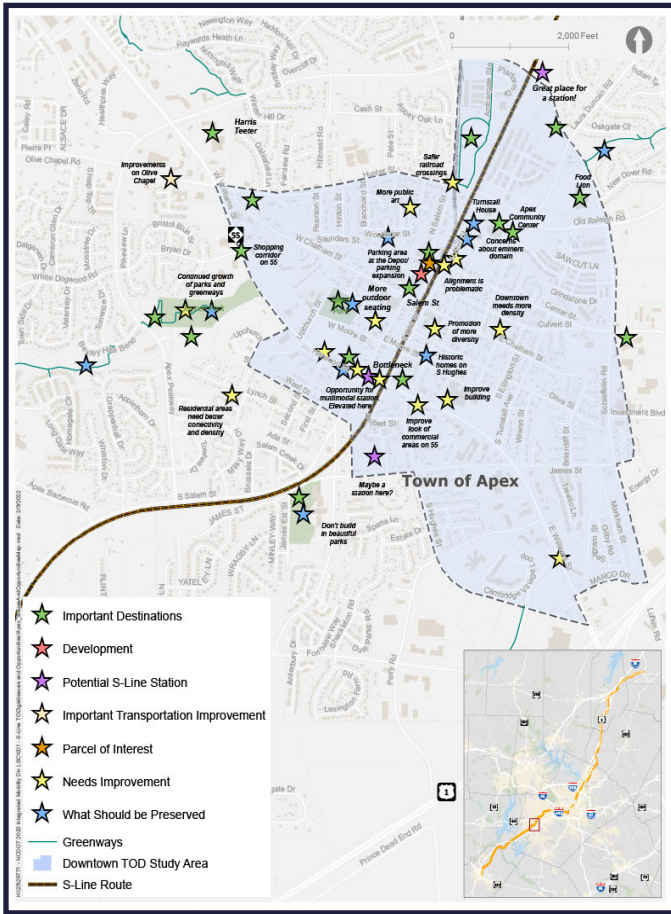
Key Opportunity Identified: Residents identified Steele St, Carthage St, and Horner Blvd (due to its connection to the Jonesboro Heights area) as important place for multimodal transportation improvements.



“Cost of living is very attractive in this area. Strive to preserve and maintain”

Apex Community Engagement Summary

The project team held a community pop-up meeting in Apex in December 2021 and engaged with **over 75 community members**. In addition, **over 215 Apex residents** have taken the online S-Line TOD Planning Public Survey to provide their thoughts on future goals related to the S-Line. The map below highlights key areas of focus from these two efforts.



Key areas of focus from community engagement in Apex



Key Input Theme: Support a vibrant and growing downtown, while preserving established single-family neighborhoods

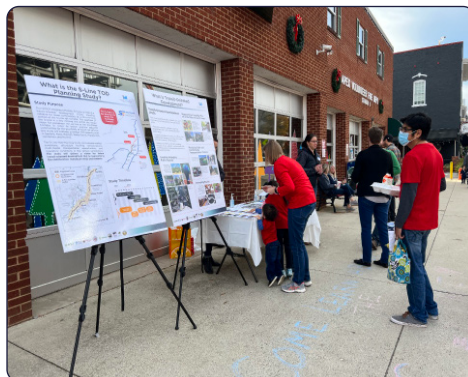
Top Votes for Outcomes the Community Would Like to See:

- Providing new transportation options within the region
- Preserving rural and natural areas
- Supporting existing and new small businesses

Issues & Opportunities:

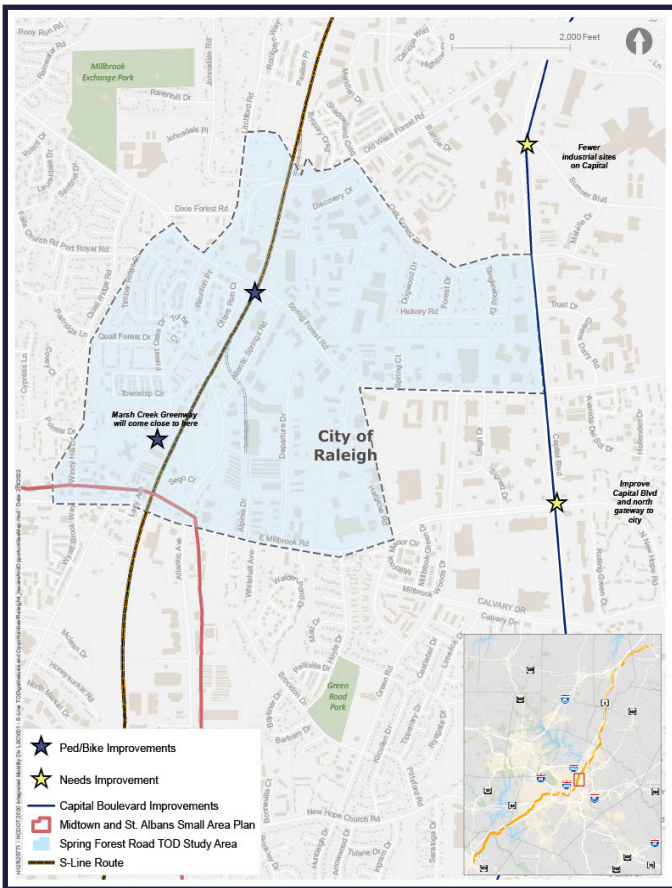
- Residents and stakeholders have varied opinions about locations for a future passenger rail station.
- Residents in existing single-family neighborhoods in close proximity to downtown Apex have expressed concerns about impacts from a future rail project and future TOD.
- Residents value the greenway network and hope to expand greenway connections to downtown, along with complimentary ped/bike investments to improve access between downtown and nearby residential areas.
- Residents identified Salem St (north of Center St) and Williams St (especially at the railroad crossing) as places where multimodal transportation improvements are necessary.

“We love our Downtown and want to preserve adjacent, historic residential communities”

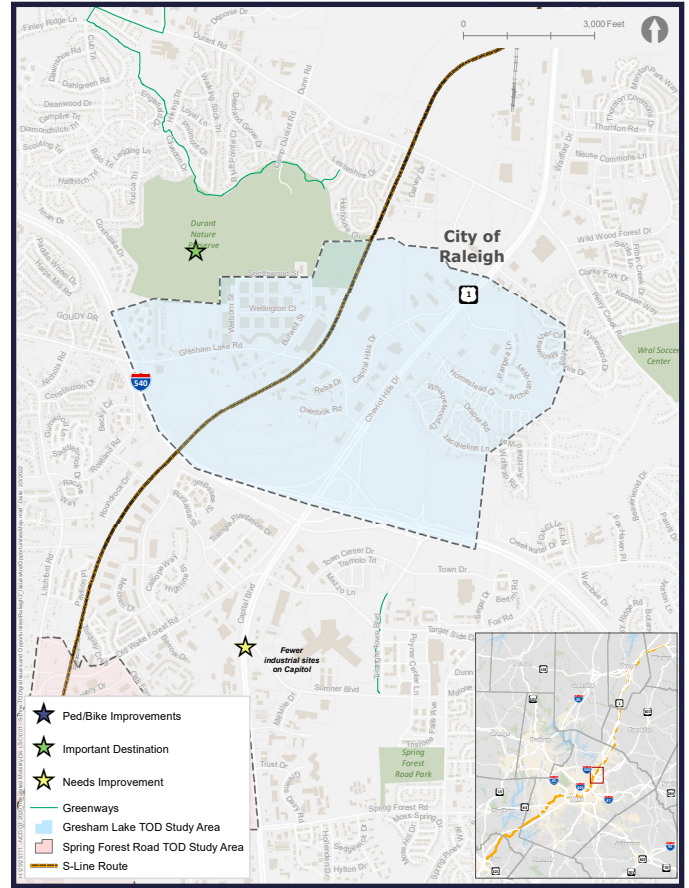


Raleigh Community Engagement Summary

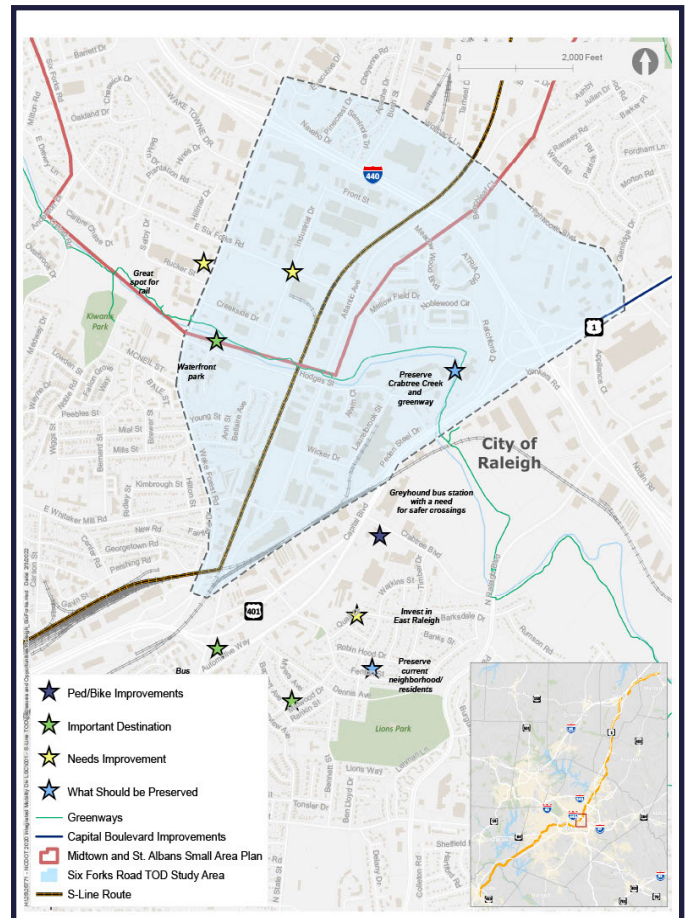
The project team held a community pop-up meeting in Raleigh in December 2021 and engaged with **over 130 community members**. In addition, **over 150 Raleigh residents** have taken the online S-Line TOD Planning Public Survey to provide their thoughts on future goals related to the S-Line. The following maps highlight key areas of focus from these two efforts.



Key areas of focus in the Spring Forest Rd TOD study area



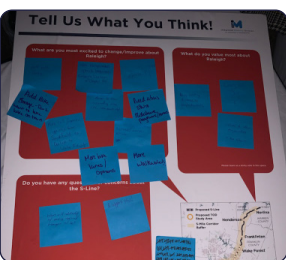
Key areas of focus in the Gresham Lake TOD study area

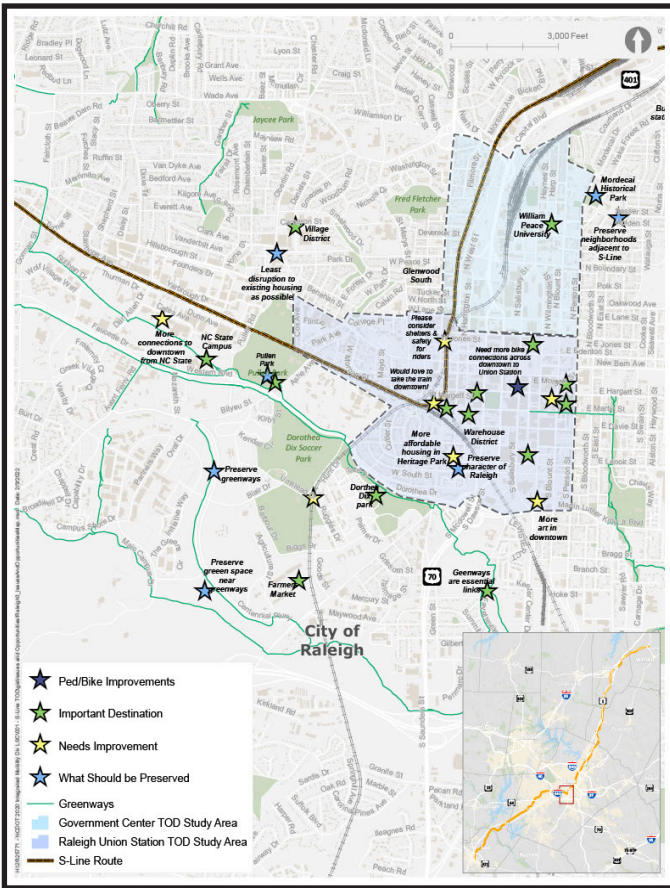


Key areas of focus in the Six Forks Rd TOD study area

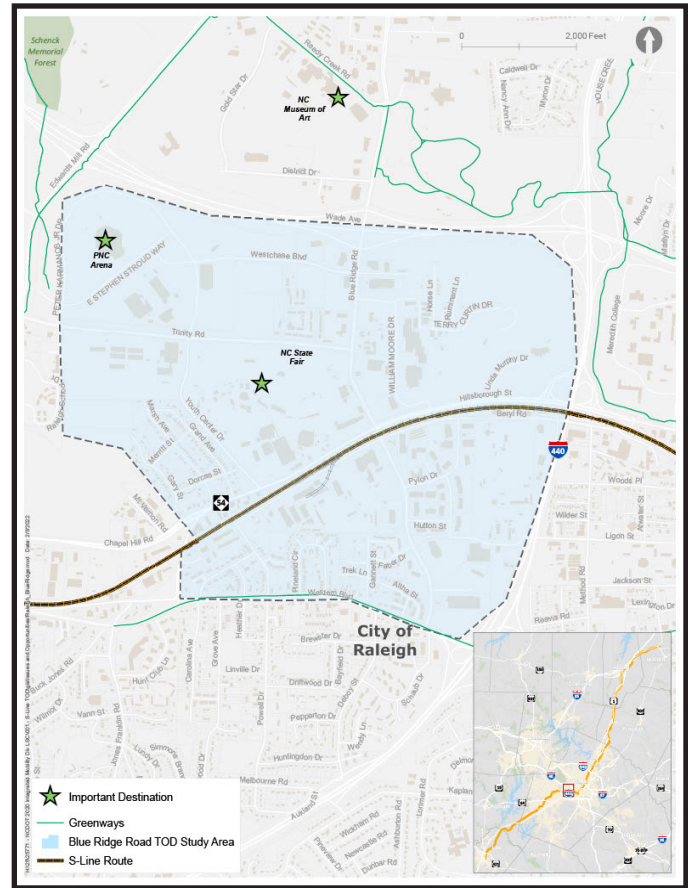


"Raleigh is a major city - more regional transportation options are overdue!"





Key areas of focus in the Raleigh Union Station and Government Center TOD study areas



Key areas of focus in the Blue Ridge Rd study area

Key Input Theme: Multimodal access, particularly to Raleigh Union Station, is important

Top Votes for Outcomes the Community Would Like to See:

- Providing new transportation options within the region
- Expanding housing choices and preventing displacement
- Preserving rural and natural areas

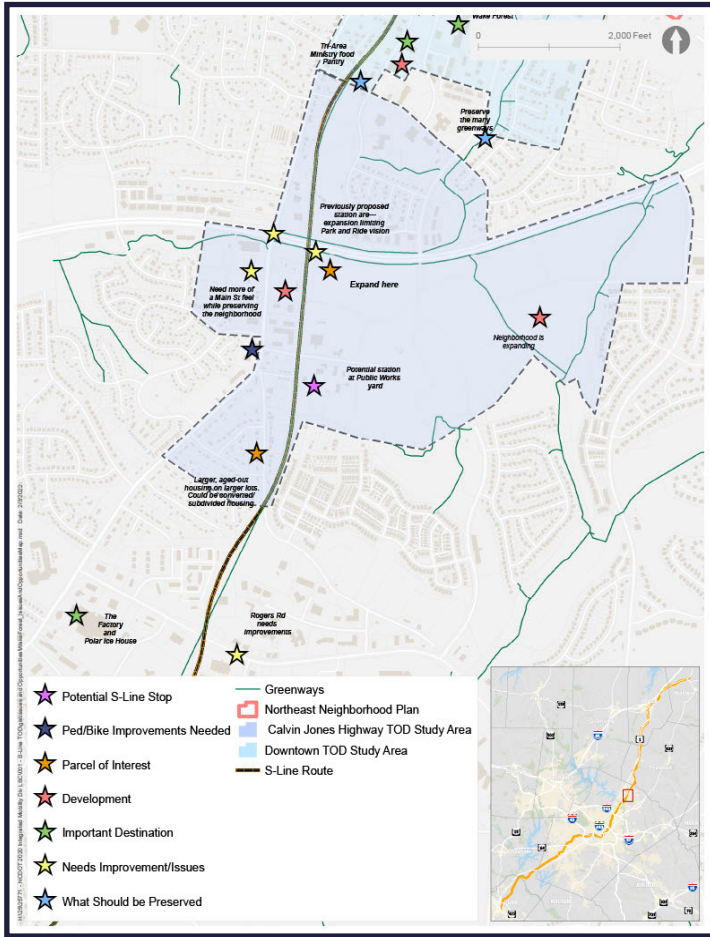
Key Opportunities Identified:

- *Gresham Lake TOD Study Area:* Residents indicated a desire to use TOD as a way to transform strip commercial, industrial/warehouse, and vacant areas into places with more vibrant development and consumer activity.
- *Spring Forest Rd Study Area:* Residents indicated the need for thoughtful transitions between the density and character that may develop in TOD activity centers and the density and character of existing neighborhoods.
- *Six Forks Rd TOD Study Area:* Resident expressed concern about displacement of existing residents in nearby neighborhoods.
- *Raleigh Union Station and Government Center TOD Study Areas:* Residents expressed concerns about maintaining housing affordability and the character of neighborhoods adjacent to the S-Line.

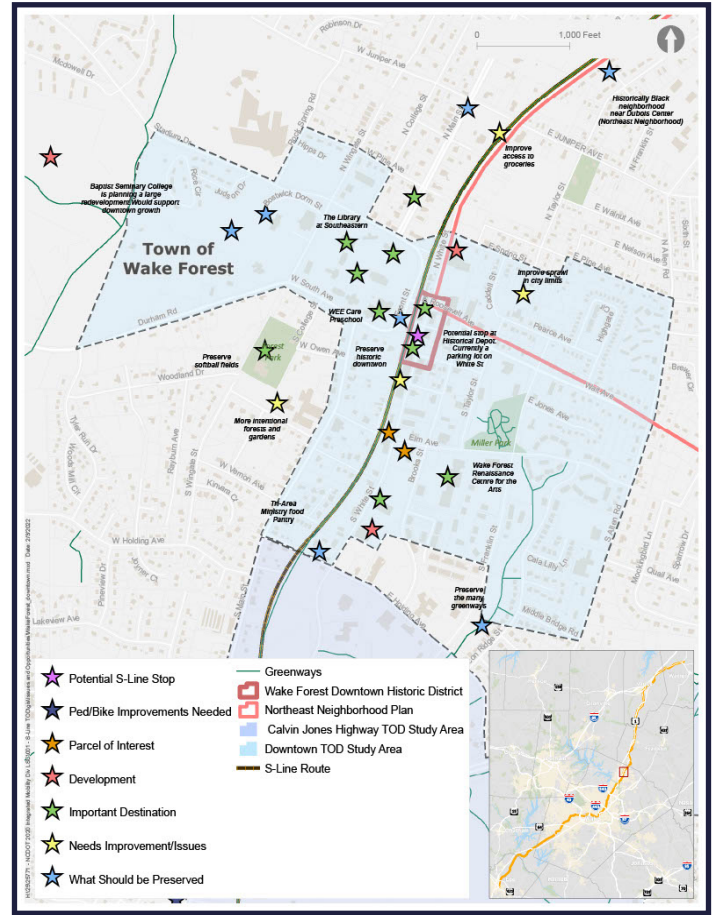


Wake Forest Community Engagement Summary

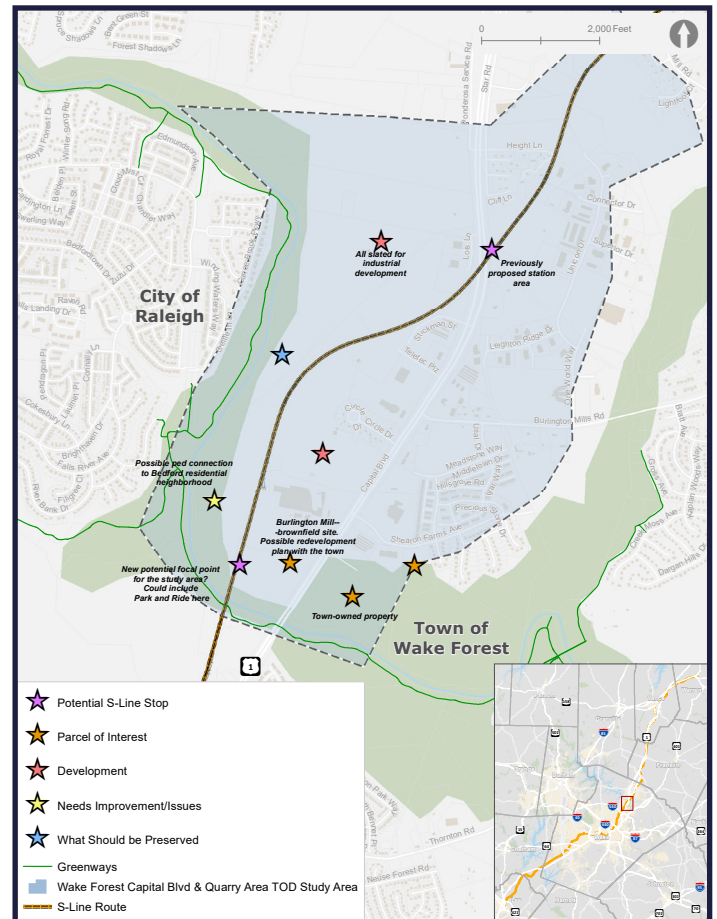
The project team held a community pop-up meeting in Wake Forest in December 2021 and engaged with **over 60 community members**. In addition, **over 740 Wake Forest residents** have taken the online S-Line TOD Planning Public Survey to provide their thoughts on future goals related to the S-Line. The following maps highlight key areas of focus from these two efforts.



Key areas of focus in the Calvin Jones Hwy TOD study area



Key areas of focus in the Downtown TOD study area



Key areas of focus in the Capital Blvd & Quarry TOD study area



Key Input Theme: Preserve the historic small-town character and surrounding rural/natural areas

Top Votes for Outcomes the Community Would Like to See:

- Providing new transportation options within the region
- Preserving rural and natural areas
- Supporting existing and new small businesses

“Less car dependence, more destinations of interest, increasing opportunities, and making WF an inviting place to live and visit”



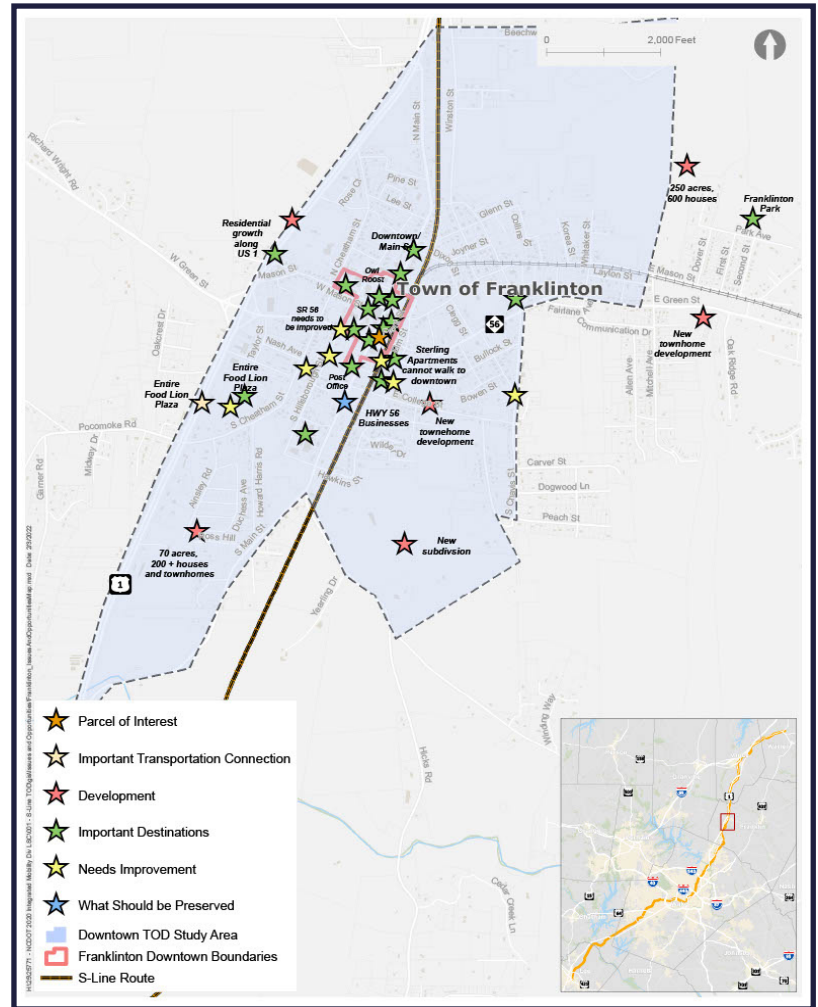
Franklinton Community Engagement Summary

The project team held a community pop-up meeting in Franklinton in December 2021 and engaged with **over 30 community members**. In addition, **over 140 Franklinton residents** have taken the online S-Line TOD Planning Public Survey to provide their thoughts on future goals related to the S-Line. The map to the right highlights key areas of focus from these two efforts.

Key Input Theme: Support walkability and preserve small businesses downtown

Top Votes for Outcomes the Community Would Like to See:

- Preserving rural and natural areas
- Building/improving sidewalks and crosswalks
- Supporting existing and new small businesses

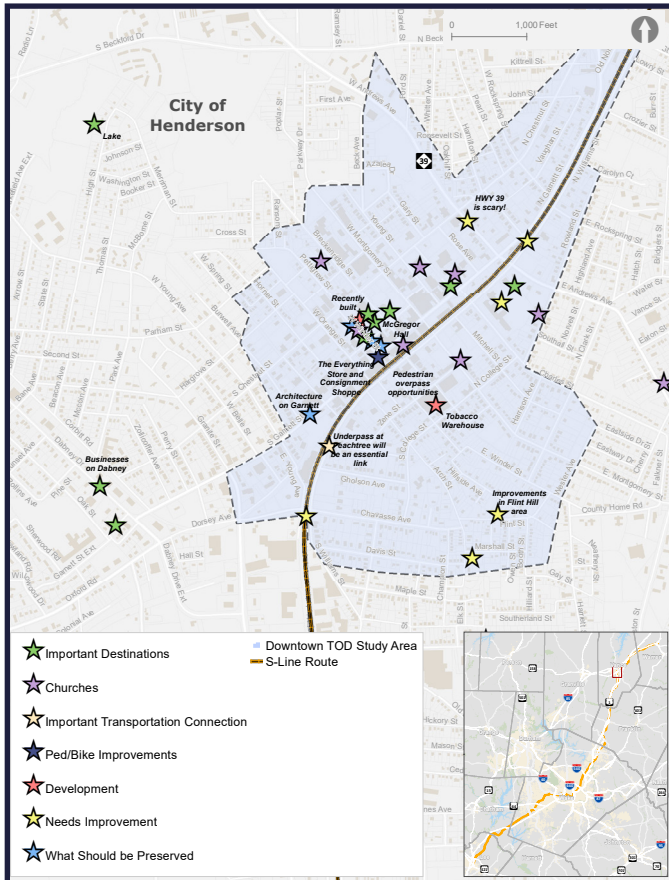


Key areas of focus from community engagement in Franklinton

“More walkability, expanding activity and life downtown, and preserving small town feel are important to us”

Henderson Community Engagement Summary

The project team held a community pop-up meeting in Henderson in December 2021 and engaged with **over 50 community members**. In addition, **around 50 Henderson residents** have taken the online S-Line TOD Planning Public Survey to provide their thoughts on future goals related to the S-Line. The map below highlights key areas of focus from these two efforts.



Key areas of focus from community engagement in Henderson

Key Input Theme: Restore a vibrant downtown and maintain existing, affordable neighborhoods

Top Votes for Outcomes the Community Would Like to See:

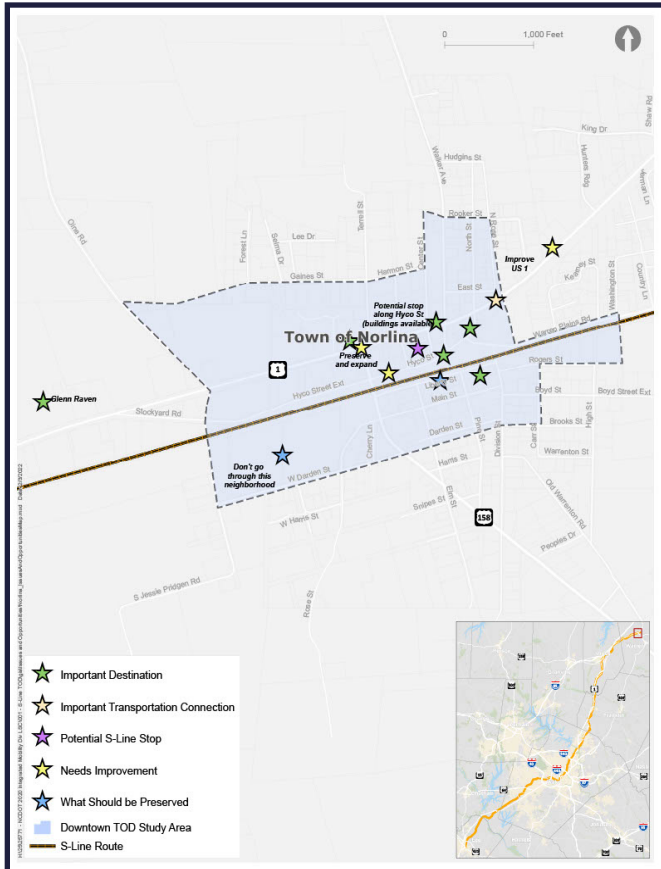
- Supporting existing and new small businesses
- Attracting new jobs
- Creating more lively and diverse streets and downtowns

Key Opportunity Identified: Residents identified a need for multimodal and transportation safety improvements on Andrews Ave (NC 39) and a desire to maintain pedestrian connections.



Norlina Community Engagement Summary

The project team held a community pop-up meeting in Norlina in December 2021 and engaged with **over 30 community members**. In addition, **around 30 Norlina residents** have taken the online S-Line TOD Planning Public Survey to provide their thoughts on future goals related to the S-Line. The map below highlights key areas of focus from these two efforts.



Key areas of focus from community engagement in Norlina

Key Input Theme: Attracting more businesses and extending downtown

Top Votes for Outcomes the Community Would Like to See:

- Supporting existing and new small businesses
- Attracting new jobs
- Creating more lively and diverse streets and downtowns
- Attracting new residents

“A rail station and new development would help revitalize the area and get back to the historical roots of the community”

Key Opportunity Identified: Norlina residents are excited about the opportunities for transportation access and reinvestment/expansion in downtown that an S-Line rail station could bring.



For more information, contact:

- **Email:** SLineTODstudy@kittelson.com

