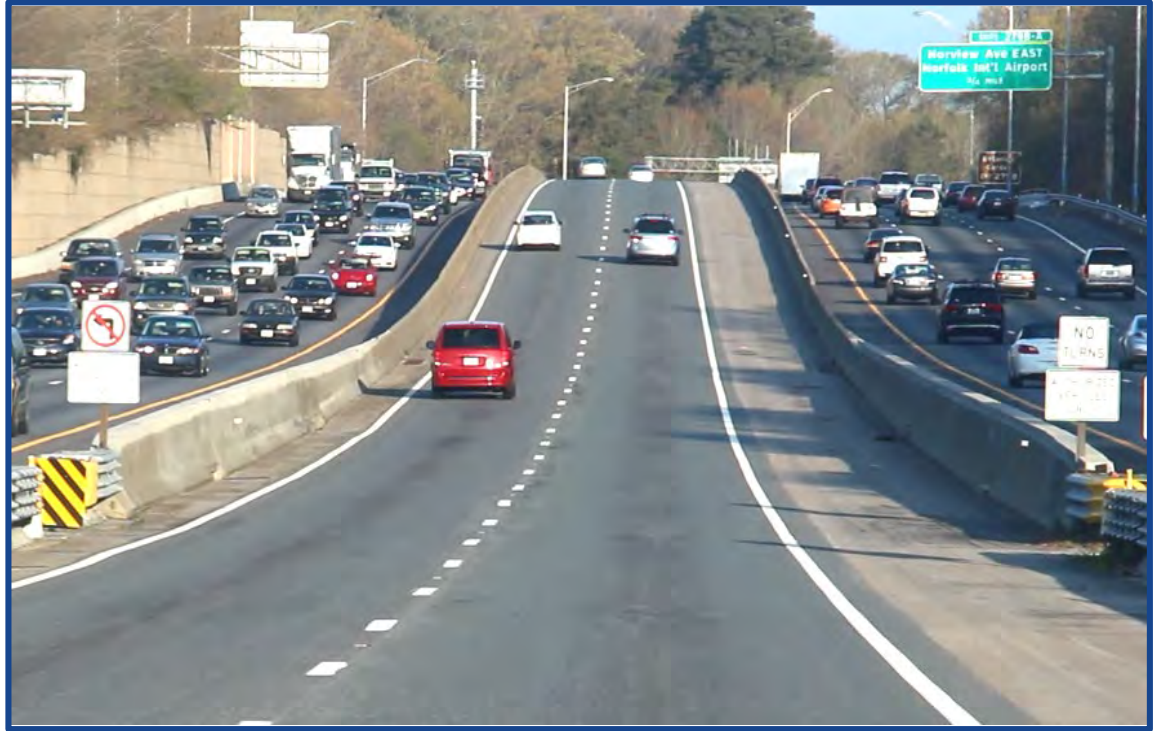






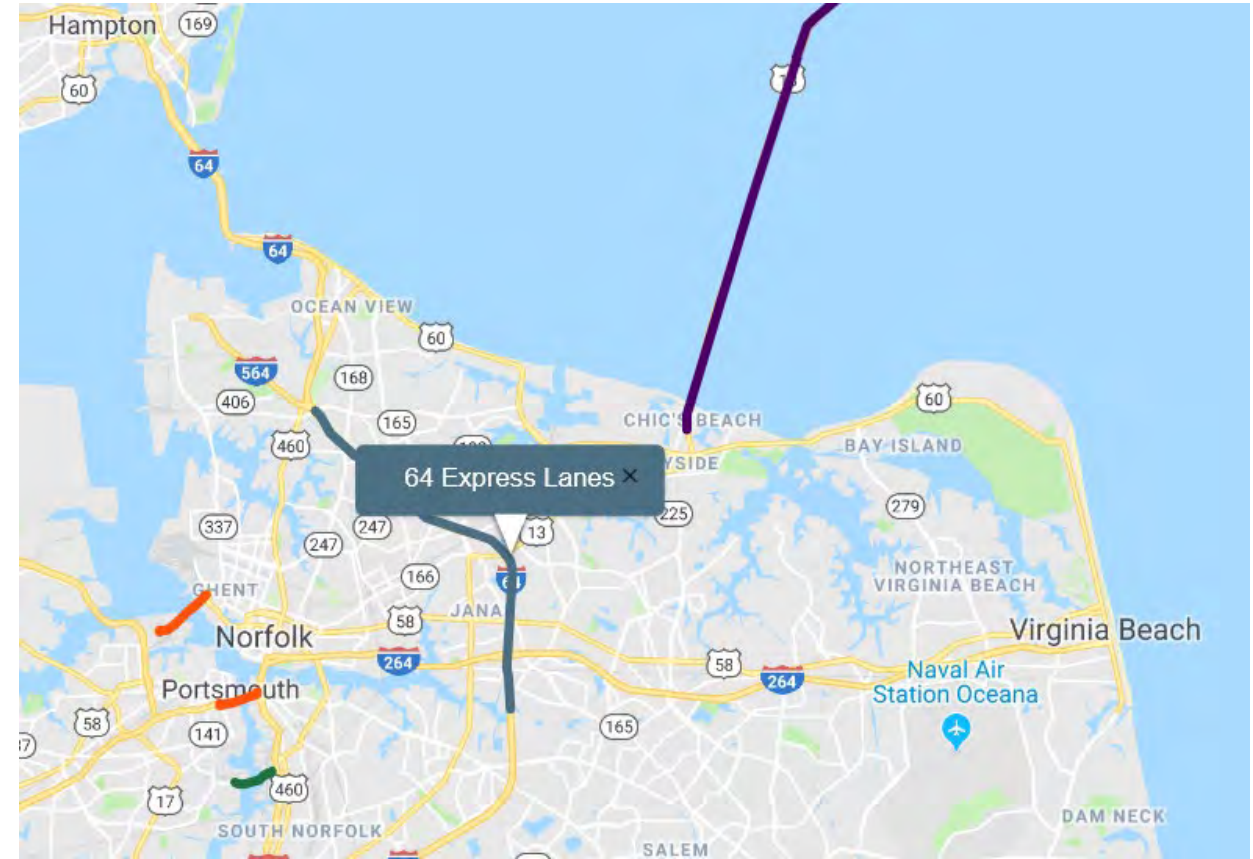
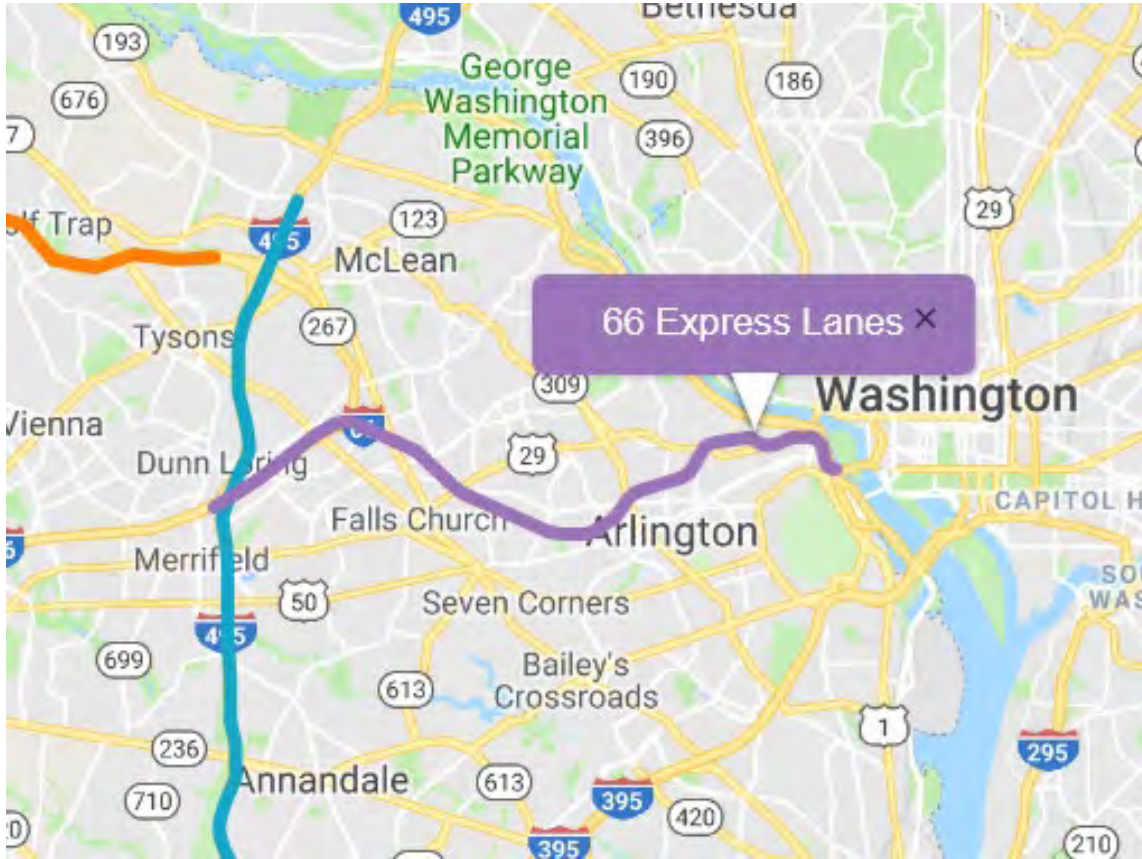
© Virginia Department Of Transportation



66 & 64 Express Lanes

David Caudill, P.E. Tolling Ops. Director
January 2019

66 & 64 Express Lanes



66 Express Lanes – Operating Characteristics

Opened December 4, 2017

Trip Construction

Dynamic Pricing

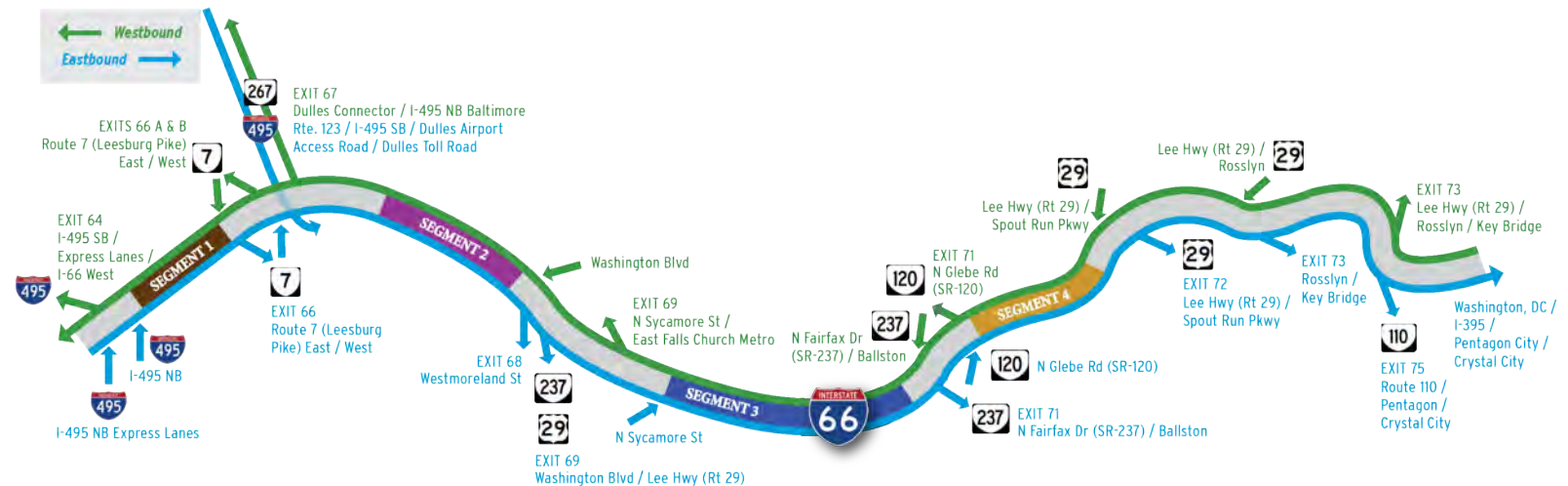
Staggered toll price posting

Part time HOT-2

E-ZPass Required

Exempt from toll

- Buses
- Motorcycles
- HOV-2



System Overview - Gantries

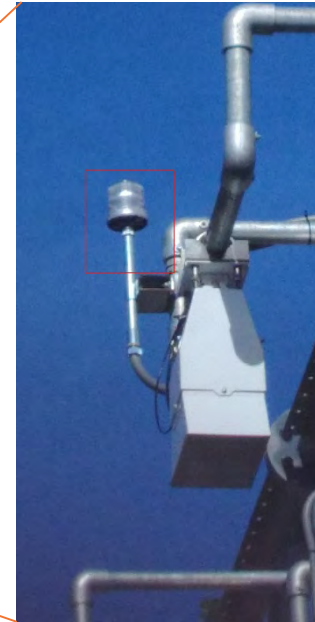


System Overview – Signage and Traffic Sensors



- Toll Price Advisory and Confirmation signs
- Microwave traffic sensors

System Overview – HOV-2+ Enforcement



- Driver declaration
- Consistent enforcement presence

Opening Week - Headlines



\$34.50 for 10 miles? New tolls in suburban D.C. kick off Monday with some high rates

By DANA HEDGPETH
© 2017, The Washington Post

The price changes as congestion

and to push more people to use mass transit. When tolling was talked about in 2015 and 2016, it was to help fund maintenance and

I-66 express lanes debut with \$34.50 toll, among the highest in US

Luz Lazo, The Washington Post
Published 8:41 a.m. ET Dec. 5, 2017

A \$40 Toll to Drive 10 Miles? It Happened on Virginia's I-66

By MAGGIE ASTOR
DEC. 5, 2017

I-66 toll hits \$40 on Day 2. Virginia transportation chief: 'No one has to pay a toll.'

By Dana Hedgpeth and Luz Lazo
December 5, 2017
Email the author



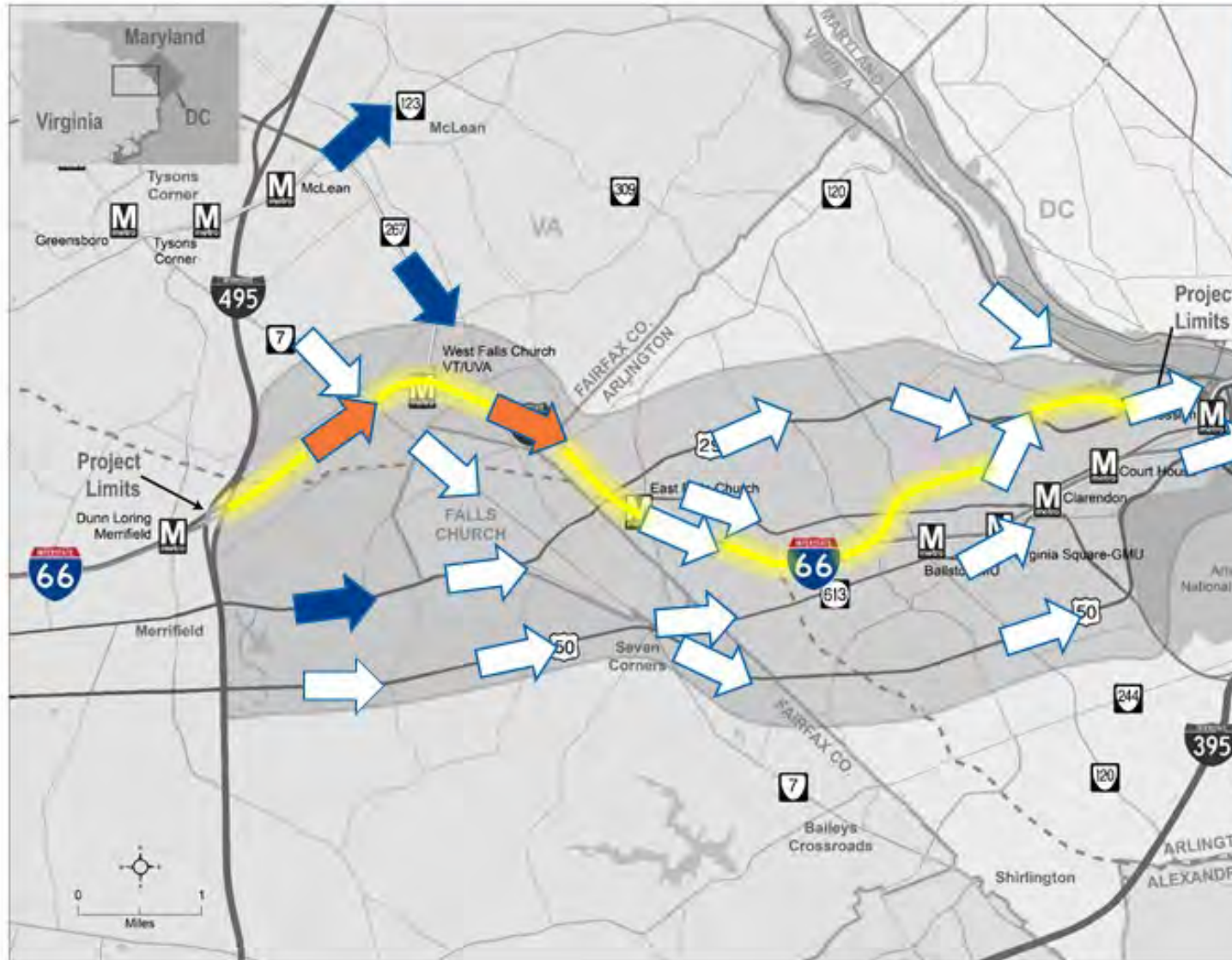
Some drivers have complained about the cost of using the new Express Lanes on a stretch of Interstate 66 in Northern Virginia. (Clarissa Alvarez/The Washington Post)

Commuters complain new I-66 tolls are 'highway robbery'

Monday was the first day solo drivers could use the interstate inside the Beltway during rush hour. But drivers had to pay as much as \$34.50.

Author: Bruce Leshan
Published: 4:10 PM EST December 4, 2017
Updated: 8:12 PM EST December 6, 2017

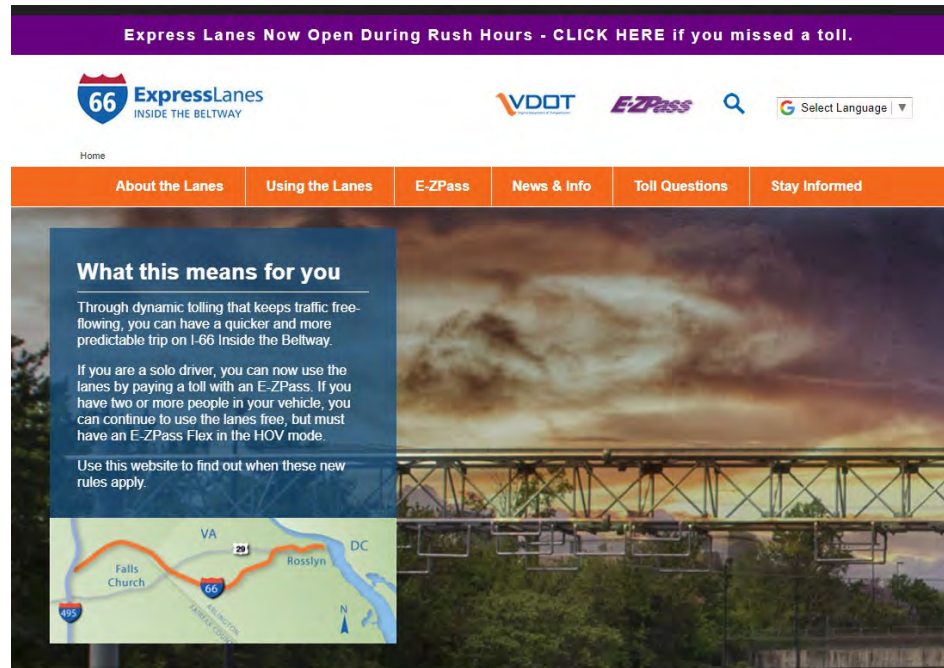
66 Express Lanes – Alternative Routes (AM)



Project Success depends on ...

- Administration – Active role
- Media outreach – ongoing communication of facts
- Public outreach
- Maintain system credibility
- Transparency
- Educate public representatives
- Educate and update courts

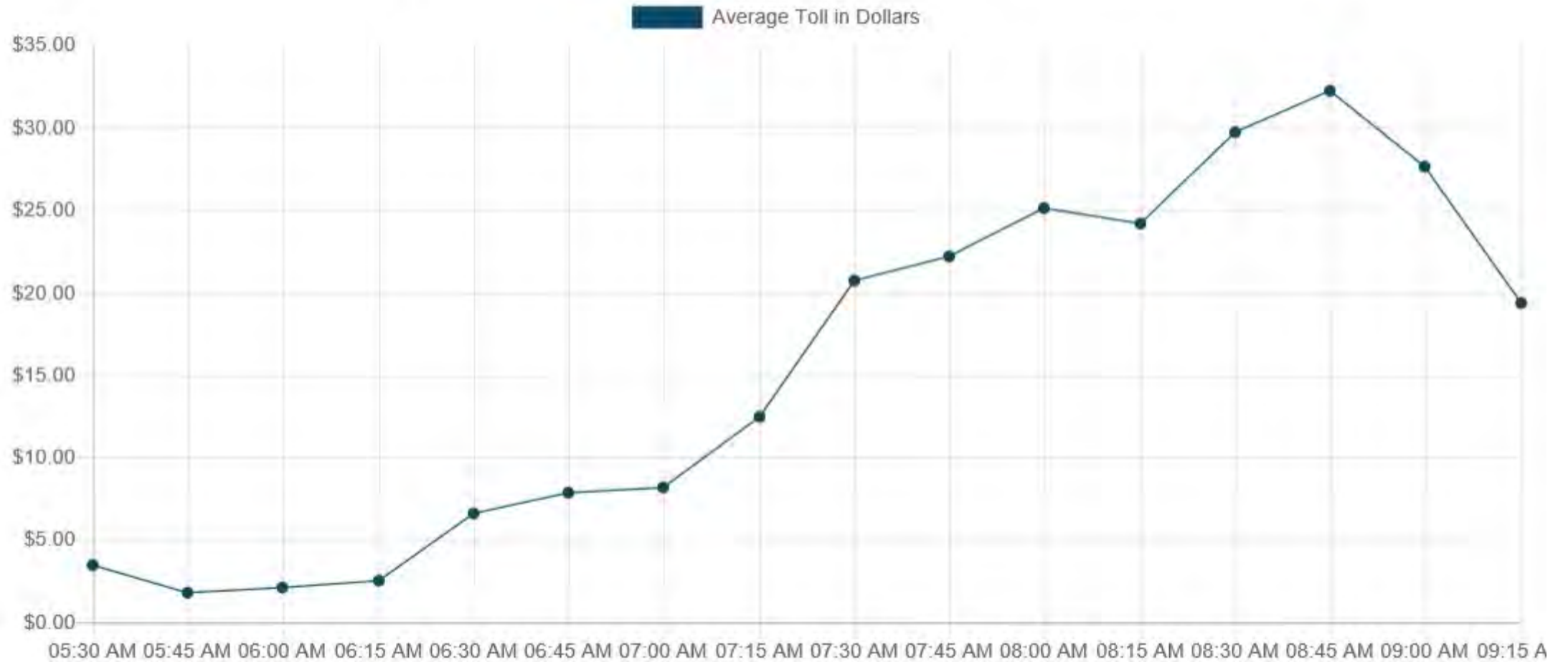
Transparency – Website and Phone App.



- Statistical Reporting
- Real time pricing for O/D pairs
- Historical toll lookup and trends
- Missed-a-Toll functionality

Transparency – SOV Toll Rate Trends

4-Week Average Price On Tuesdays, I-495 S to Exit 75 - Pentagon/Alexandria



Transparency – Facility Reporting



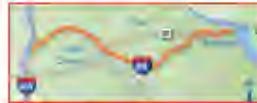
NOVEMBER 2018 PERFORMANCE REPORT

I-66 Express Lanes Inside the Beltway

HIGHLIGHTS

Morning and afternoon commutes were faster on average and travel times generally more reliable compared to Nov 2017.

- Travel speeds on I-66 averaged 47.3 miles per hour (mph) during morning commutes compared to 48.8 mph.
- Travel speeds on I-66 averaged 51.7 mph during afternoon commutes compared to 44.2 mph.
- Travel times on I-66 averaged 0.4 minutes longer during morning commutes, and 2.1 minutes shorter during afternoon commutes.
- Drivers on parallel arterial roadways including Routes 7, 29, 50, and the George Washington Memorial Parkway mostly experienced improved travel speeds and times during morning and evening commutes. Morning trips on GW Parkway were slower on average.



EXPRESS LANES USE

- 15,040 average daily trips eastbound between 5:30 and 9:30 a.m.
- 18,016 average daily trips westbound between 3 and 7 p.m.
- 44.0% of all vehicle trips were carpools (peaked at 68.0% at 8:18 a.m. on Nov 1.)

E-ZPASS USE

- 89.9% of vehicles traveled with an E-ZPass or E-ZPass Flex.
- 44.0% of all vehicle trips with E-ZPass in HOV (free) mode.
- 45.9% of all vehicle trips with E-ZPass in toll mode.



PRICING INFORMATION

- \$12.22 – Average price for round trips (a.m. and p.m. averages combined)
 - \$7.75 – Average price for eastbound trips.
 - \$4.47 – Average price for westbound trips.
- 1,549 trips (out of 661,133 total) with price of \$40 or more - 0.23% of all Express Lanes trips.
- \$1.95 – Average price for eastbound trips between 5:30 and 6:30 a.m. (period prior to former HOV hours.)

SINCE EXPRESS LANES OPENED ON DEC. 4, 2017:

- 14,435 average daily trips eastbound and 17,304 average daily trips westbound.
- \$12.59 – Average price for round trips.
 - \$8.02 – Average price for eastbound trips.
 - \$4.57 – Average price for westbound trips.

66expresslanes.org



NOVEMBER 2018 PERFORMANCE REPORT

I-66 Express Lanes Inside the Beltway

EASTBOUND

5:30 AM - 9:30 AM	Nov 2017	Nov 2018
Average Speed (MPH)	48.8	47.3
Travel Time (Minutes)	13.0	13.4

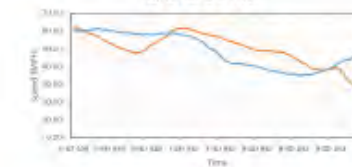
WESTBOUND

3:00 PM - 7:00 PM	Nov 2017	Nov 2018
Average Speed (MPH)	44.2	51.7
Travel Time (Minutes)	14.4	12.3

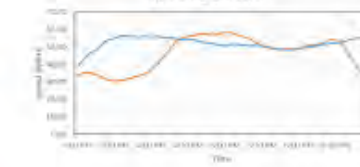
I-66 | AVERAGE SPEED

2017 — 2018 —

EASTBOUND

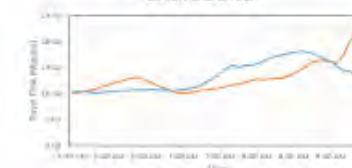


WESTBOUND

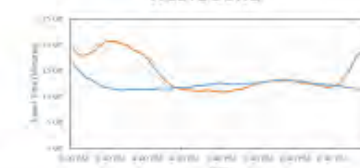


I-66 | AVERAGE TRAVEL TIME

EASTBOUND



WESTBOUND



66expresslanes.org

64 Express Lanes Operating Characteristics

Opened January 10, 2018

Reversible

Dynamic Pricing

Staggered toll price posting

Part time HOT

E-ZPass Required

Exempt from toll

- Buses
- Motorcycles
- HOV-2



