

# DYNAMIC LEFT TURN INTERSECTION

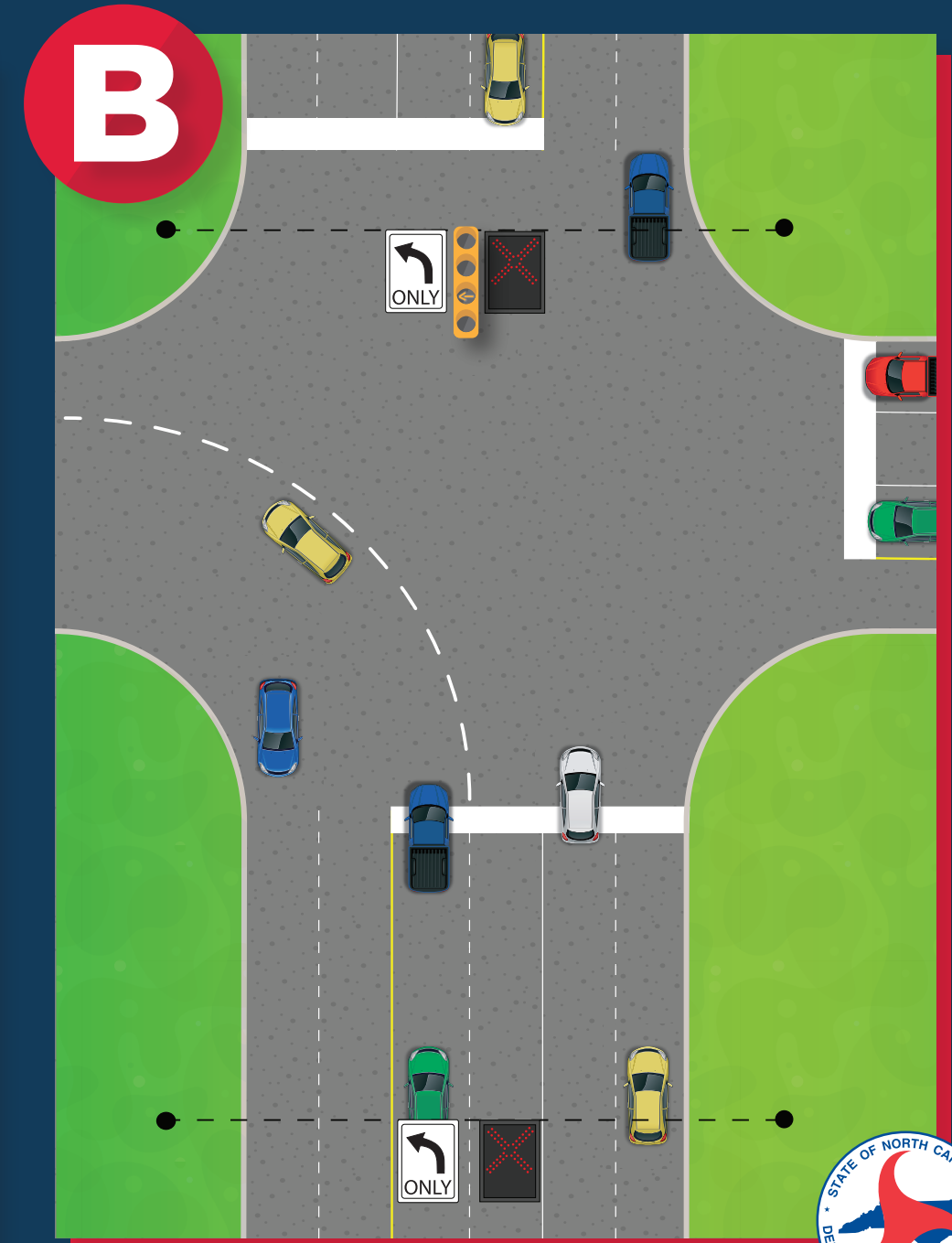
NCDOT uses this design to vary the number of left turn lanes and signal phasing based on traffic demand.

## **OPTION A: BOTH LEFT TURN LANES IN USE**

*During rush hour,* both operate under a protected green arrow.

## **OPTION B: ONLY LEFTMOST TURN LANE IN USE**

*During slower times,* the rightmost left turn lane is deactivated, allowing drivers to turn with a flashing yellow arrow—reducing delays for everyone.



OTHER SIGNS AND SIGNAL HEADS FOR EACH INTERSECTION NOT SHOWN.

