

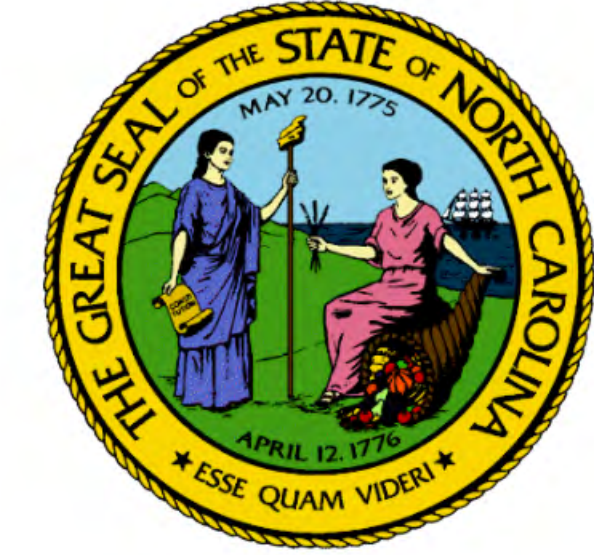


PUBLIC MEETING MAP - PROJECT 17BP.14.R.212
JACKSON COUNTY - CULLOWHEE, NC
SR 1336 (MONTEITH GAP ROAD) FROM NORTH OF SR 1002
(OLD CULLOWHEE ROAD) TO NORTH OF SR 1337 (LEDBETTER ROAD)
ALTERNATE 1



LEGEND

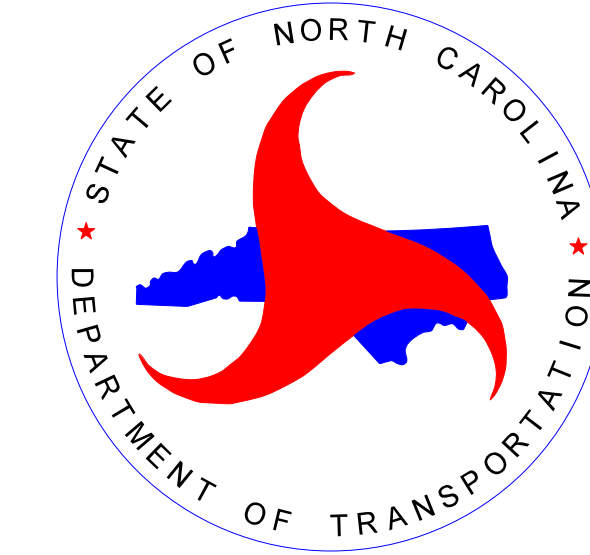
- BUILDINGS
- EXISTING RIGHT OF WAY
- PROPOSED RIGHT OF WAY
- PROPOSED EASEMENTS (DRAINAGE AND CONSTRUCTION)
- EXISTING ROADWAY
- EXISTING ROADWAY TO BE REMOVED
- PROPOSED ROADWAY
- PROPOSED SIDEWALK
- PROPOSED STRUCTURES, ISLAND, CURB AND GUTTER
- EXISTING STRUCTURES, ISLAND, CURB AND GUTTER TO BE REMOVED
- LAKES, RIVERS, STREAMS AND PONDS
- PROPOSED RIGHT OF WAY
- PROPERTY LINES



PUBLIC MEETING MAP
PROJECT 17BP.14.R.212

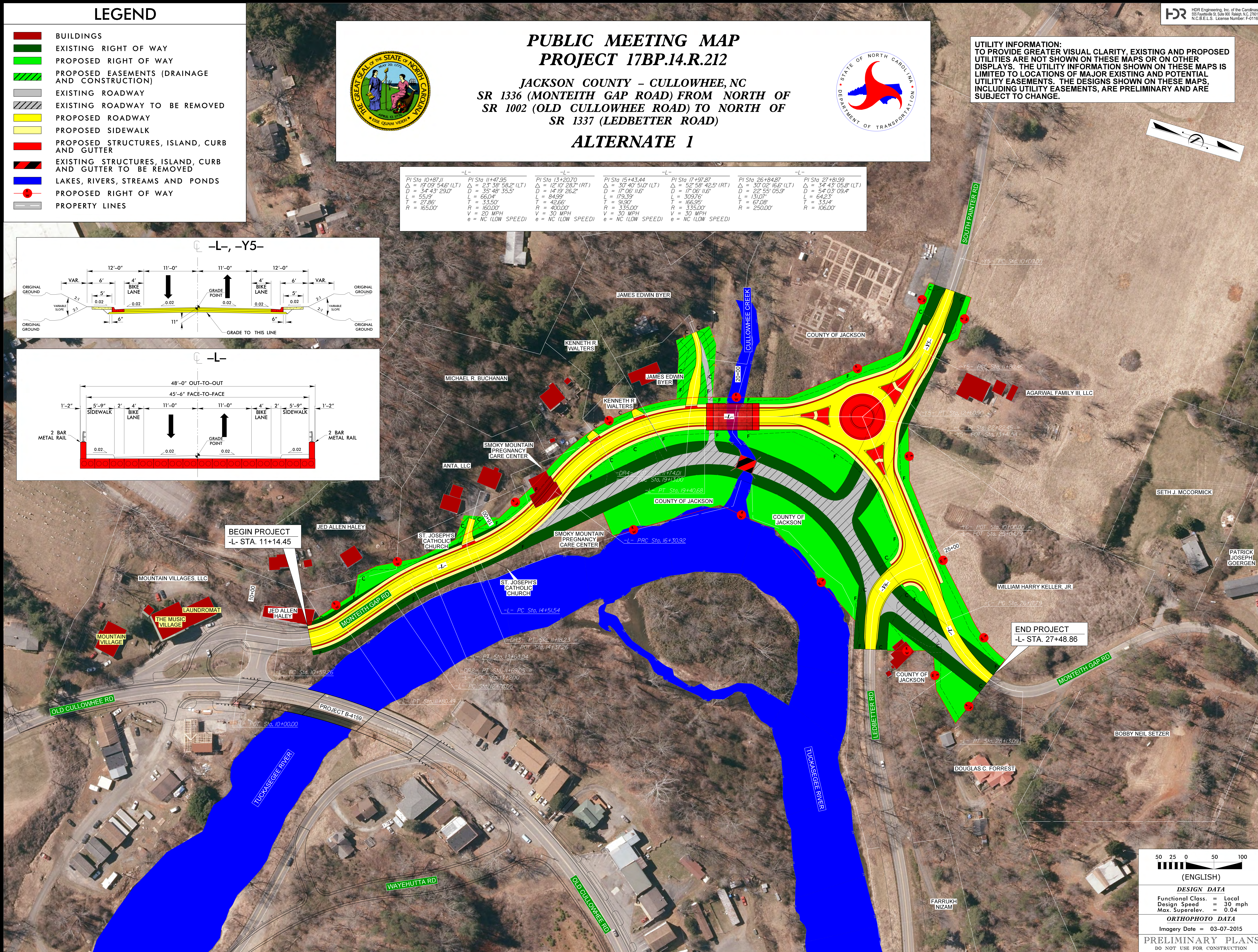
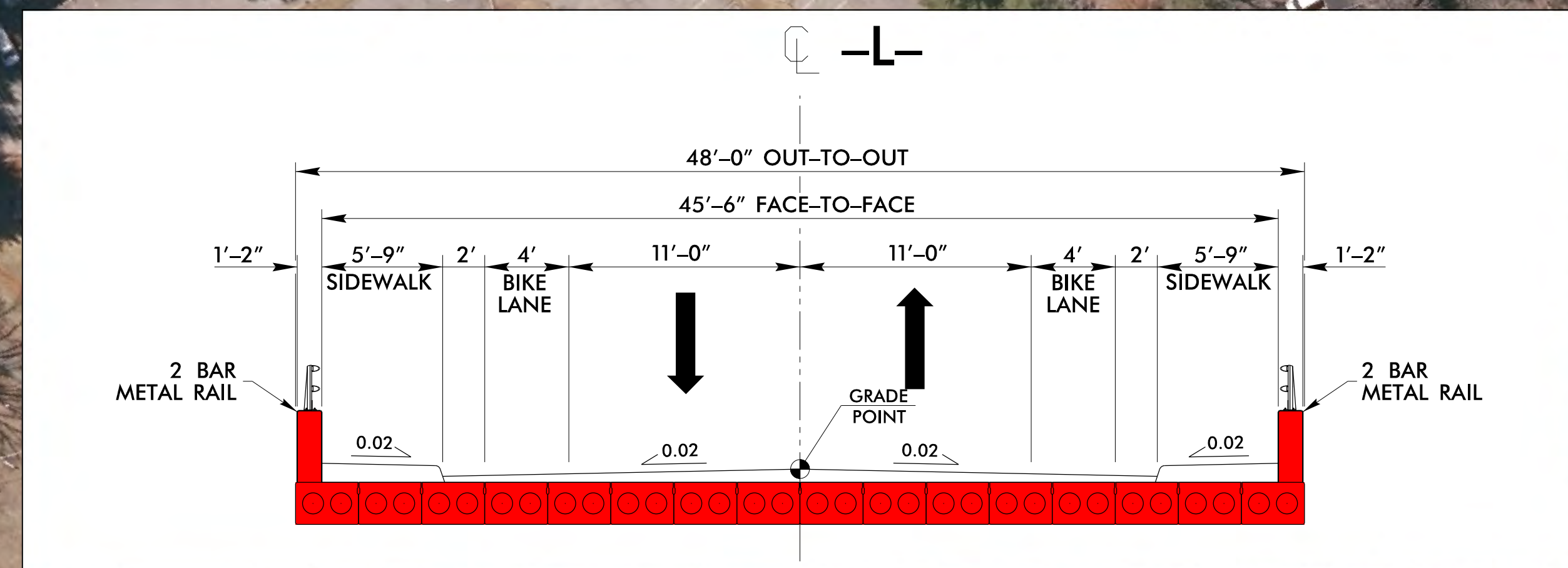
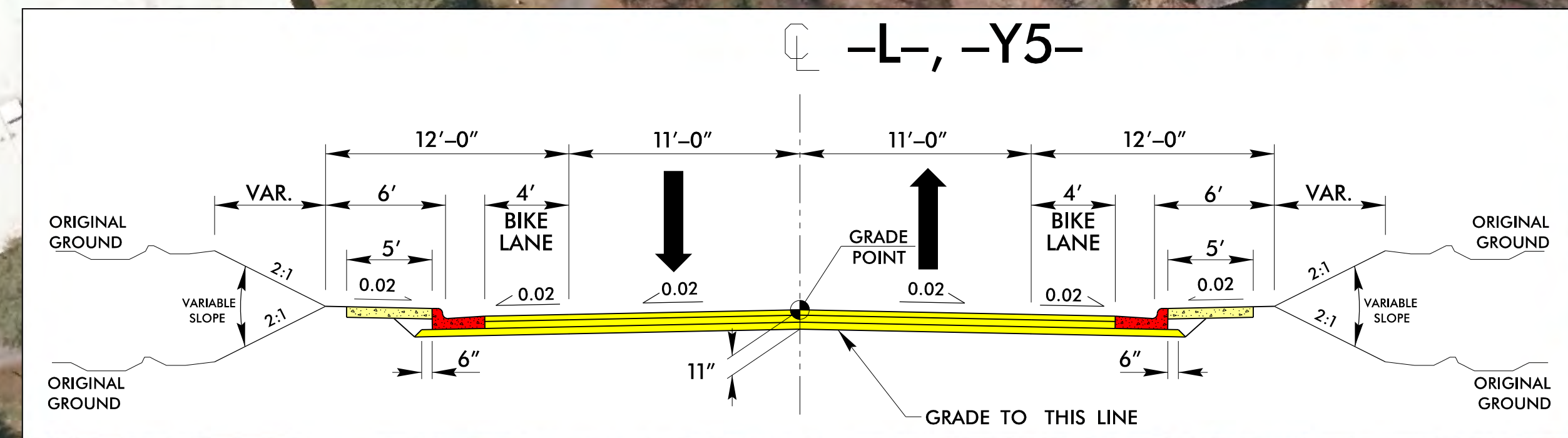
JACKSON COUNTY - CULLOWHEE, NC
SR 1336 (MONTEITH GAP ROAD) FROM NORTH OF
SR 1002 (OLD CULLOWHEE ROAD) TO NORTH OF
SR 1337 (LEDBETTER ROAD)

ALTERNATE 1

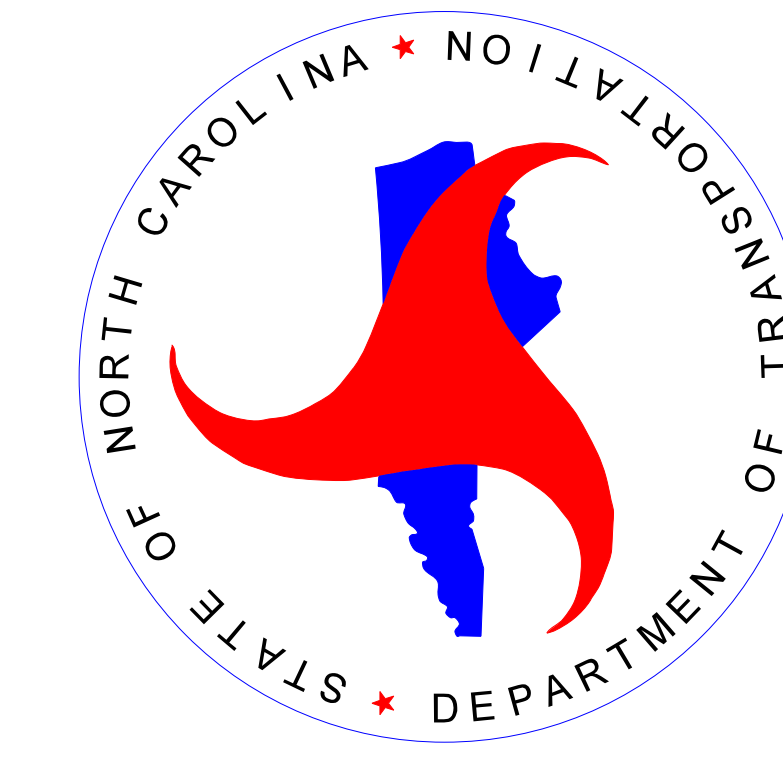


UTILITY INFORMATION:
 TO PROVIDE GREATER VISUAL CLARITY, EXISTING AND PROPOSED UTILITIES ARE NOT SHOWN ON THESE MAPS OR ON OTHER DISPLAYS. THE UTILITY INFORMATION SHOWN ON THESE MAPS IS LIMITED TO LOCATIONS OF MAJOR EXISTING AND POTENTIAL UTILITY EASEMENTS. THE DESIGNS SHOWN ON THESE MAPS, INCLUDING UTILITY EASEMENTS, ARE PRELIMINARY AND ARE SUBJECT TO CHANGE.

Station	Delta	Delta	Delta	Delta	Delta	Delta	
PI Sta. 10+87.11	Δ = 19°09'54.6" (LT)	PI Sta. 11+47.95	Δ = 23°38'58.2" (LT)	PI Sta. 13+20.70	Δ = 12°10'28.7" (RT)	PI Sta. 15+43.44	Δ = 30°40'51.0" (LT)
D = 34°43'29.0"	D = 35°48'35.5"	D = 14°19'26.2"	D = 17°06'11.6"	D = 17°06'11.6"	D = 52°58'42.5" (RT)	D = 30°02'16.6" (LT)	D = 34°43'05.8" (LT)
L = 65.92	L = 66.04	L = 84.92	L = 173.39	L = 303.61	L = 303.61	L = 131.07	L = 64.23
T = 27.26'	T = 33.50'	T = 42.66'	T = 91.90'	T = 166.95'	T = 91.90'	T = 67.08'	T = 33.14'
R = 165.00'	R = 160.00'	R = 400.00'	R = 335.00'	R = 335.00'	R = 335.00'	R = 250.00'	R = 106.00'
V = 23 MPH	V = 30 MPH	V = 30 MPH	V = 30 MPH	V = 30 MPH	V = 30 MPH	V = 30 MPH	V = 30 MPH
e = NC (LOW SPEED)	e = NC (LOW SPEED)	e = NC (LOW SPEED)	e = NC (LOW SPEED)	e = NC (LOW SPEED)	e = NC (LOW SPEED)	e = NC (LOW SPEED)	e = NC (LOW SPEED)



50 25 0 50 100
 (ENGLISH)
DESIGN DATA
 Functional Class. = Local
 Design Speed = 30 mph
 Max. Superelev. = 0.04
ORTHO PHOTO DATA
 Imagery Date = 03-07-2015
PRELIMINARY PLANS
 DO NOT USE FOR CONSTRUCTION



PUBLIC MEETING MAP - PROJECT 17BP.14.R.212
JACKSON COUNTY - CULLOWHEE, NC
SR 1336 (MONTEITH GAP ROAD) FROM NORTH OF SR 1002
(OLD CULLOWHEE ROAD) TO NORTH OF SR 1337 (LEDBETTER ROAD)
ALTERNATE 1

