



PUBLIC MEETING MAP - PROJECT 17BP.14.R.212
JACKSON COUNTY - CULLOWHEE, NC
SR 1336 (MONTEITH GAP ROAD) FROM NORTH OF SR 1002
(OLD CULLOWHEE ROAD) TO NORTH OF SR 1337 (LEDBETTER ROAD)
ALTERNATE 2



LEGEND

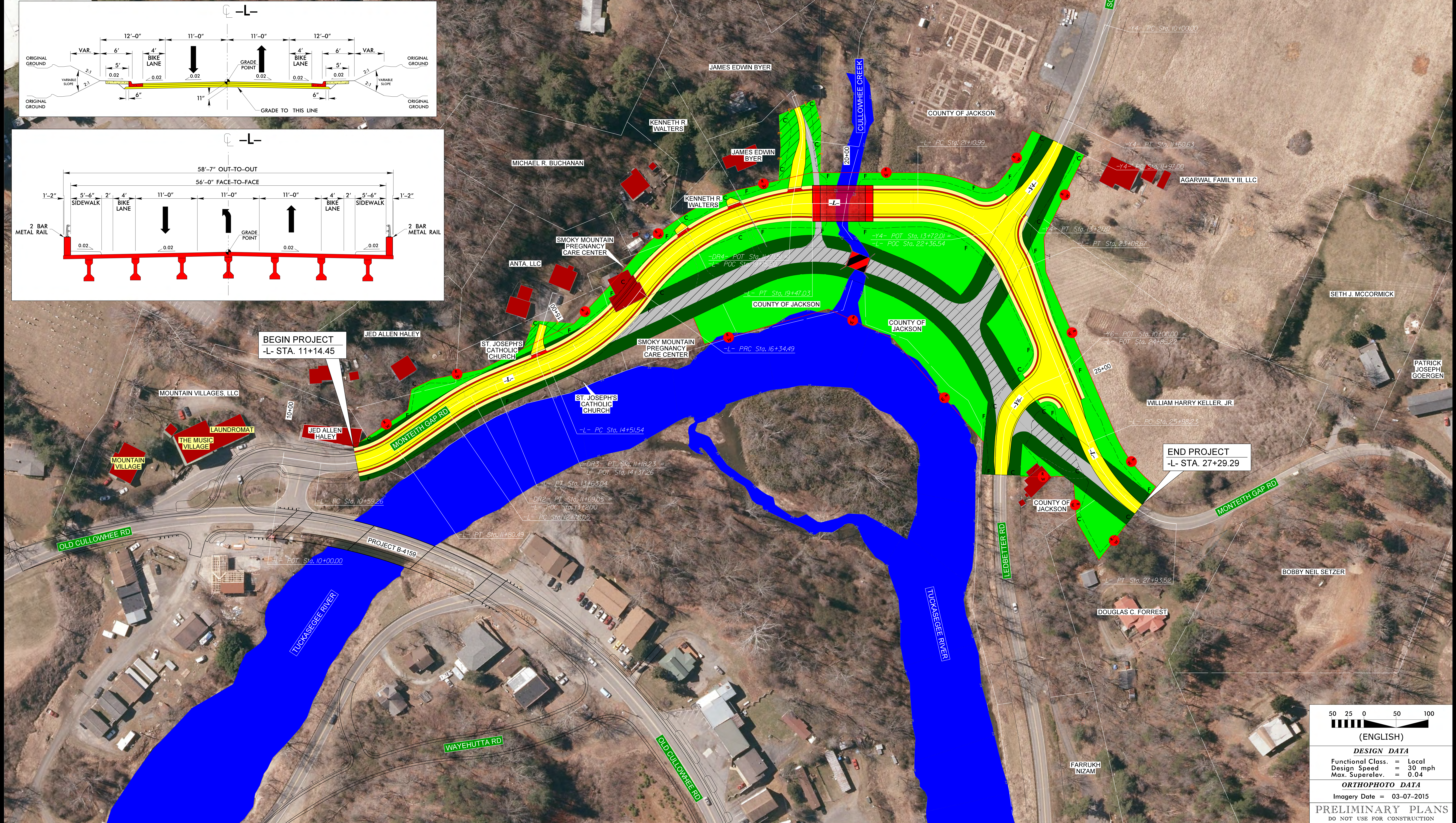
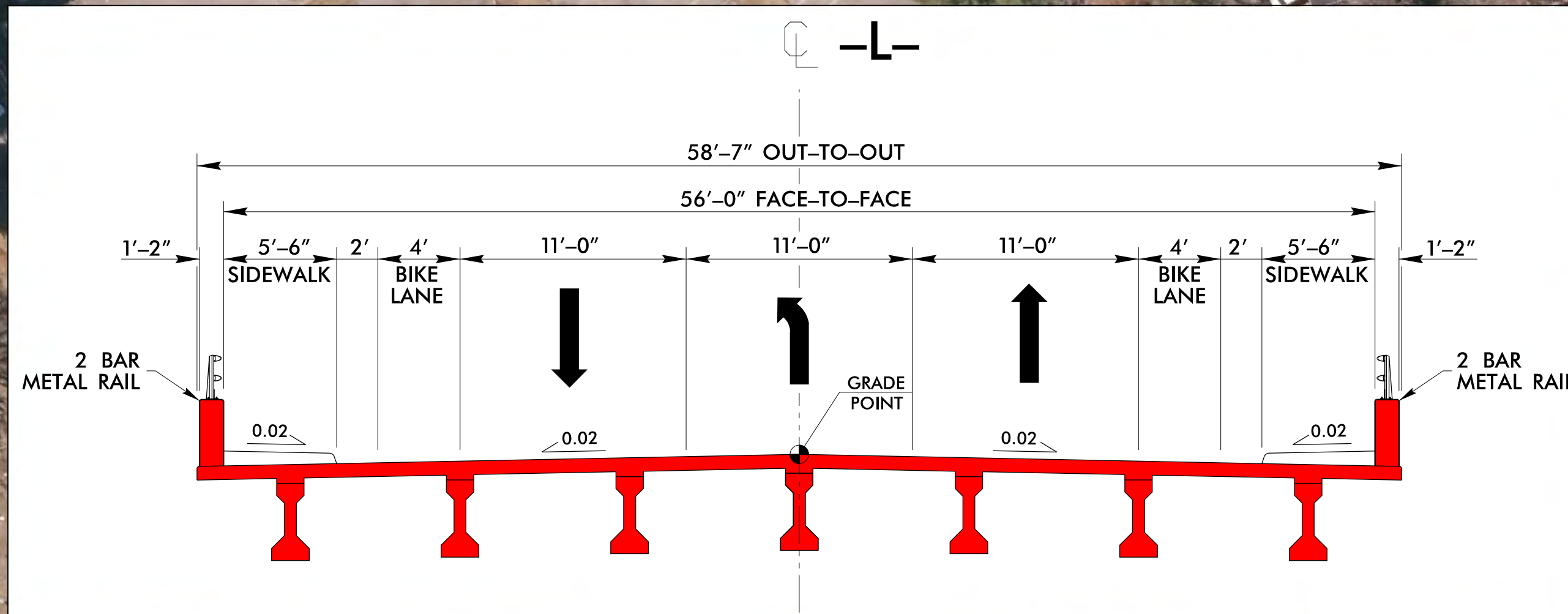
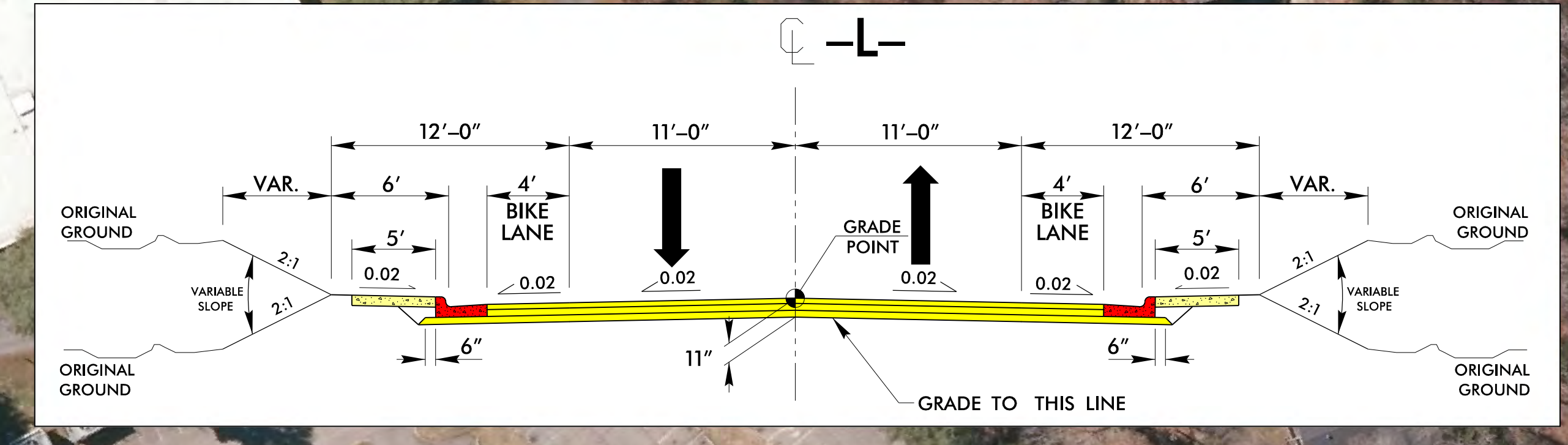
- BUILDINGS
- EXISTING RIGHT OF WAY
- PROPOSED RIGHT OF WAY
- PROPOSED EASEMENTS (DRAINAGE AND CONSTRUCTION)
- EXISTING ROADWAY
- EXISTING ROADWAY TO BE REMOVED
- PROPOSED ROADWAY
- PROPOSED SIDEWALK
- PROPOSED STRUCTURES, ISLAND, CURB AND GUTTER
- EXISTING STRUCTURES, ISLAND, CURB AND GUTTER TO BE REMOVED
- LAKES, RIVERS, STREAMS AND PONDS
- PROPOSED RIGHT OF WAY
- PROPERTY LINES

PUBLIC MEETING MAP PROJECT 17BP.14.R.212

JACKSON COUNTY - CULLOWHEE, NC SR 1336 (MONTEITH GAP ROAD) FROM NORTH OF SR 1002 (OLD CULLOWHEE ROAD) TO NORTH OF SR 1337 (LEDBETTER ROAD)

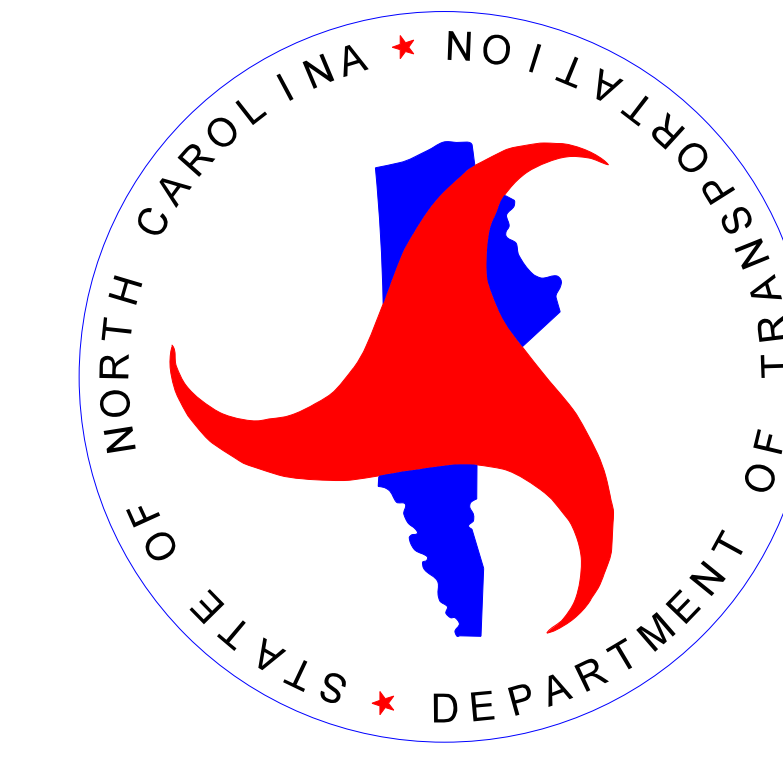
ALTERNATE 2

Stationing	Delta	Length	Time	Radius	Vertical Curve	Grade
PI Sta 10+87.11	Δ = 19° 09' 54.6" (LT)	L = 55.9'	T = 27.86'	R = 165.00'	V = 20 MPH	e = NC (LOW SPEED)
PI Sta 11+47.95	Δ = 23° 38' 58.2" (LT)	L = 66.04'	T = 33.50'	R = 160.00'	V = 20 MPH	e = NC (LOW SPEED)
PI Sta 13+20.70	Δ = 12° 10' 28.7" (RT)	L = 14.19' 26.2"	T = 7.12'	R = 94.59'	V = 30 MPH	e = NC (LOW SPEED)
PI Sta 15+45.39	Δ = 31° 28' 42.8" (LT)	L = 102.55'	T = 51.27'	R = 333.00'	V = 30 MPH	e = NC (LOW SPEED)
PI Sta 18+03.34	Δ = 53° 46' 34.3" (RT)	L = 17.12' 21.4"	T = 8.56'	R = 102.54'	V = 30 MPH	e = NC (LOW SPEED)
PI Sta 22+23.26	Δ = 67° 49' 28.4" (RT)	L = 197.63'	T = 102.54'	R = 167.00'	V = 25 MPH	e = 0.02 (LOW SPEED)
PI Sta 26+65.50	Δ = 30° 02' 16.6" (LT)	L = 22° 55' 05.9"	T = 13.07'	R = 64.23'	V = 25 MPH	e = 0.02 (LOW SPEED)
PI Sta 27+62.43	Δ = 34° 43' 05.8" (LT)	L = 54.03' 09.4"	T = 27.01'	R = 106.00'	V = 25 MPH	e = 0.02 (LOW SPEED)



UTILITY INFORMATION:
 TO PROVIDE GREATER VISUAL CLARITY, EXISTING AND PROPOSED UTILITIES ARE NOT SHOWN ON THESE MAPS OR ON OTHER DISPLAYS. THE UTILITY INFORMATION SHOWN ON THESE MAPS IS LIMITED TO LOCATIONS OF MAJOR EXISTING AND POTENTIAL UTILITY EASEMENTS. THE DESIGNS SHOWN ON THESE MAPS, INCLUDING UTILITY EASEMENTS, ARE PRELIMINARY AND ARE SUBJECT TO CHANGE.

50 25 0 50 100
 (ENGLISH)
DESIGN DATA
 Functional Class. = Local
 Design Speed = 30 mph
 Max. Superelev. = 0.04
ORTHO PHOTO DATA
 Imagery Date = 03-07-2015
PRELIMINARY PLANS
 DO NOT USE FOR CONSTRUCTION



PUBLIC MEETING MAP - PROJECT 17BP.14.R.212
JACKSON COUNTY - CULLOWHEE, NC
SR 1336 (MONTEITH GAP ROAD) FROM NORTH OF SR 1002
(OLD CULLOWHEE ROAD) TO NORTH OF SR 1337 (LEDBETTER ROAD)
ALTERNATE 2

