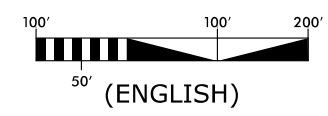


PRELIMINARY PLANS
DO NOT USE FOR CONSTRUCTION

DESIGN DATA
Functional Class = MINOR ARTERIAL
Design Speed = 40 MPH
Max Superlev. = 0.04

DRIVEWAY NOTE
DRIVEWAY LOCATION AND SIZE ARE PRELIMINARY AND ARE SUBJECT TO CHANGE BASED ON FINAL DESIGNS.



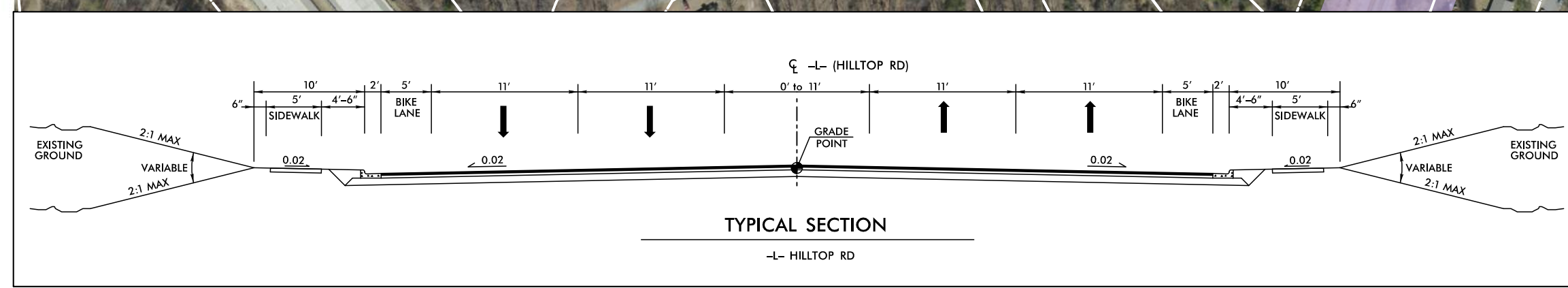
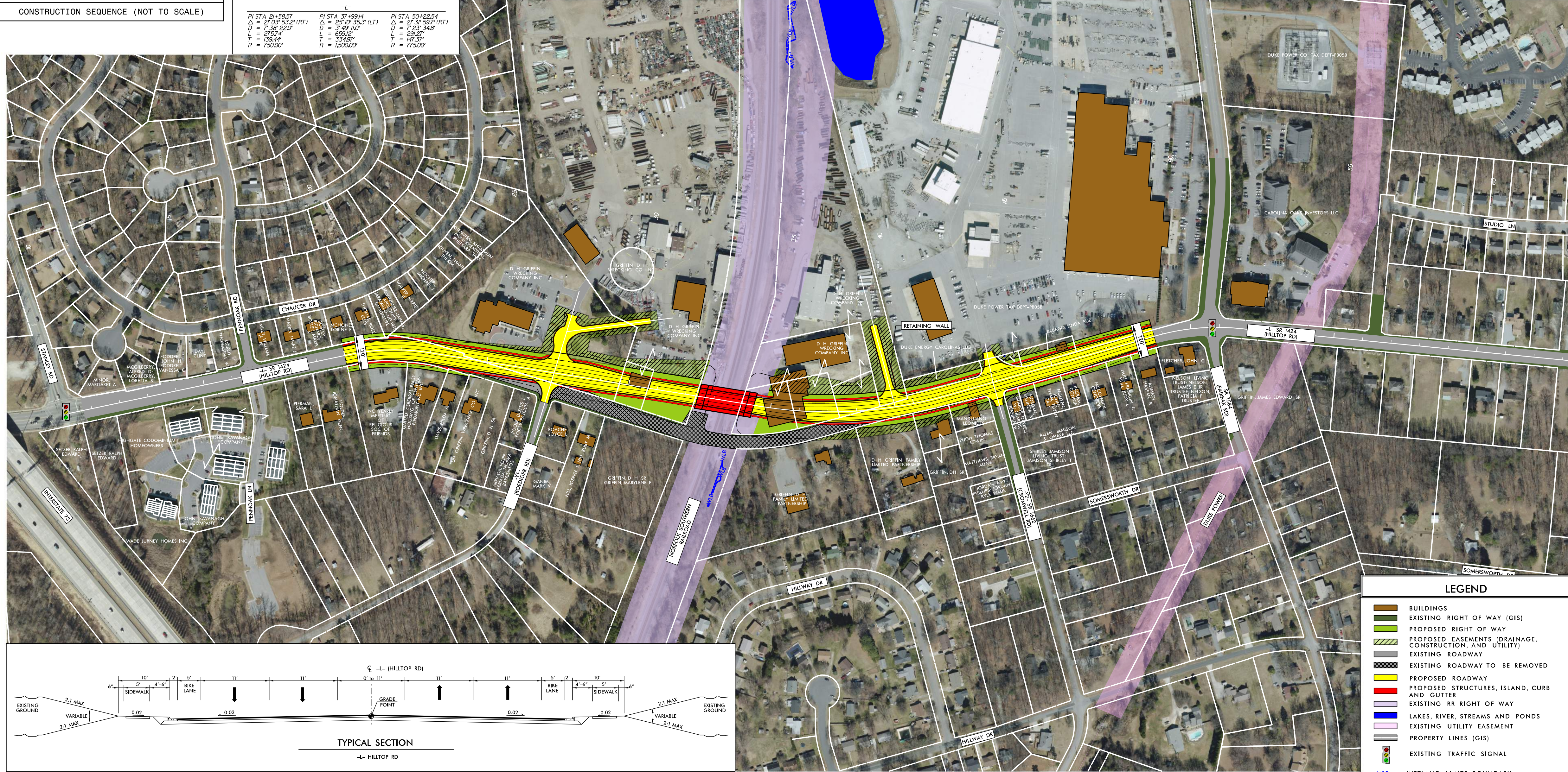
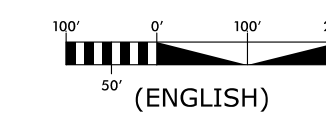
+L-		
PI STA. 21+58.57	PI STA. 37+98.14	PI STA. 50+25.54
Δ = 25°10'35.34" (RT)	Δ = 25°10'35.34" (LT)	Δ = 25°10'35.34" (RT)
D = 7.38' 22.2"	D = 5.49' 11.0"	D = 5.23' 34.8"
L = 215.74'	L = 655.61'	L = 288.31'
T = 135.84'	T = 334.81'	T = 128.51'
R = 750.00'	R = 1500.00'	R = 775.00'

PUBLIC MEETING MAP
TIP PROJECT: P-5713
GUILFORD COUNTY
NORTH CAROLINA RAILROAD (NCRR) /
NORFOLK SOUTHERN RAILROAD,
SR 1424 (HILLTOP RD) IN GREENSBORO
CONVERT TO GRADE SEPARATION
ALTERNATIVE A
SHEET 1 OF 1

PRELIMINARY PLANS
DO NOT USE FOR CONSTRUCTION

DESIGN DATA
Functional Class = MINOR ARTERIAL
Design Speed = 40 MPH
Max Superlev. = 0.04

DRIVEWAY NOTE
DRIVEWAY LOCATION AND SIZE ARE PRELIMINARY AND ARE SUBJECT TO CHANGE BASED ON FINAL DESIGNS.



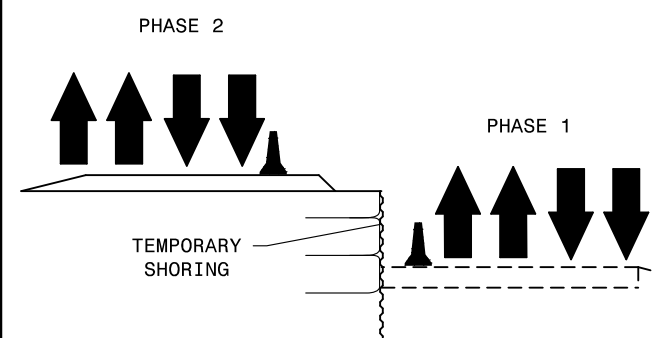
LEGEND

- BUILDINGS
- EXISTING RIGHT OF WAY (GIS)
- PROPOSED RIGHT OF WAY
- PROPOSED EASEMENTS (DRAINAGE, CONSTRUCTION, AND UTILITY)
- EXISTING ROADWAY
- EXISTING ROADWAY TO BE REMOVED
- PROPOSED ROADWAY
- PROPOSED STRUCTURES, ISLAND, CURB AND GUTTER
- EXISTING RR RIGHT OF WAY
- LAKES, RIVER, STREAMS AND PONDS
- EXISTING UTILITY EASEMENT
- PROPERTY LINES (GIS)
- EXISTING TRAFFIC SIGNAL
- WETLAND LIMITS BOUNDARY

PUBLIC MEETING MAP
TIP PROJECT: P-5713
GUILFORD COUNTY
NORTH CAROLINA RAILROAD (NCRR) /
NORFOLK SOUTHERN RAILROAD,
SR 1424 (HILLTOP RD) IN GREENSBORO
CONVERT AT-GRADE
CROSSING TO GRADE SEPARATION
ALTERNATIVE A
SHEET 1 OF 1

PUBLIC MEETING MAP
TIP PROJECT: P-5713
GUILFORD COUNTY
NORTH CAROLINA RAILROAD (NCRR) /
NORFOLK SOUTHERN RAILROAD,
SR 1424 (HILLTOP RD) IN GREENSBORO
CONVERT AT-GRADE
CROSSING TO GRADE SEPARATION
ALTERNATIVE A
SHEET 1 OF 1

NOTE: TIE INS WILL REQUIRE 2 LANE 2 WAY PATTERN FOR SHORT DURATION (ESTIMATED 2 WEEKS)

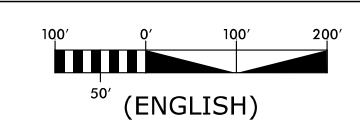


CONSTRUCTION SEQUENCE (NOT TO SCALE)

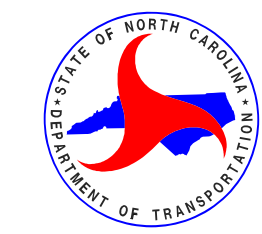
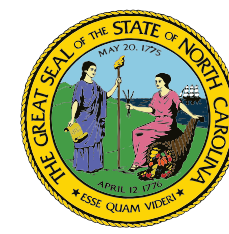
PRELIMINARY PLANS
DO NOT USE FOR CONSTRUCTION

DESIGN DATA
Functional Class = MINOR ARTERIAL
Design Speed = 40 MPH
Max Superlev. = 0.04

DRIVEWAY NOTE
DRIVEWAY LOCATION AND SIZE ARE PRELIMINARY AND ARE SUBJECT TO CHANGE BASED ON FINAL DESIGNS.



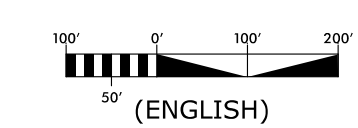
PUBLIC MEETING MAP
TIP PROJECT: P-5713
GUILFORD COUNTY
NORTH CAROLINA RAILROAD (NCRR) /
NORFOLK SOUTHERN RAILROAD,
SR 1424 (HILLTOP RD) IN GREENSBORO
CONVERT TO GRADE SEPARATION
ALTERNATIVE B
SHEET 1 OF 1



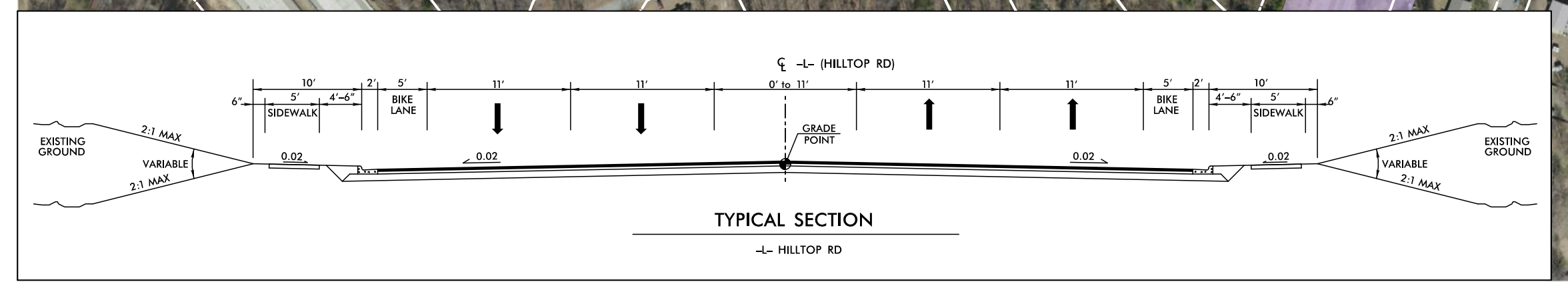
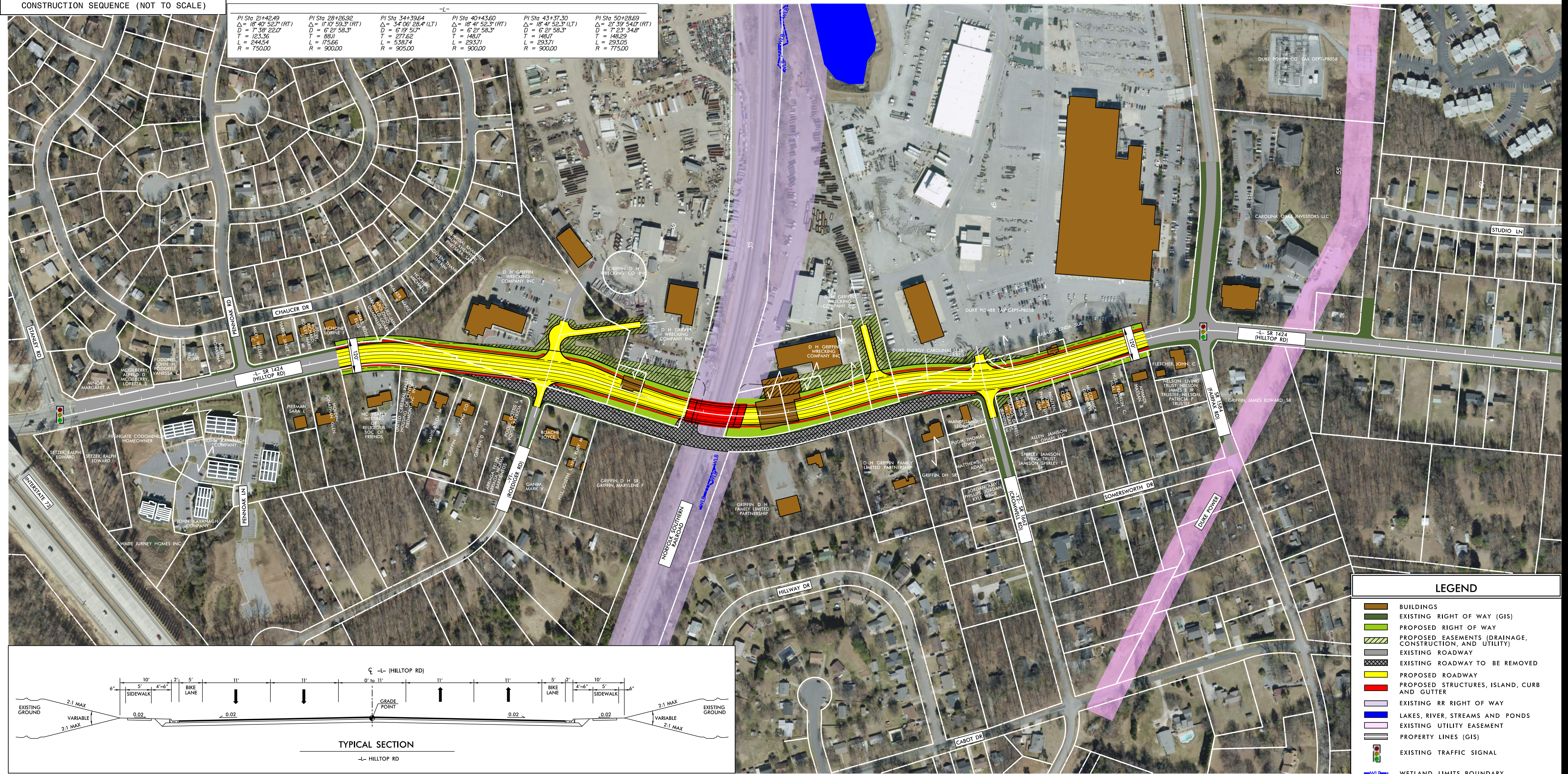
PRELIMINARY PLANS
DO NOT USE FOR CONSTRUCTION

DESIGN DATA
Functional Class = MINOR ARTERIAL
Design Speed = 40 MPH
Max Superlev. = 0.04

DRIVEWAY NOTE
DRIVEWAY LOCATION AND SIZE ARE PRELIMINARY AND ARE SUBJECT TO CHANGE BASED ON FINAL DESIGNS.



PI Sta 21+42.49 Δ = 87°41'52.3" (RT) D = 7°36'22.0" T = 123.56 L = 244.54 R = 75000	PI Sta 28+26.52 Δ = 11°07'53.3" (RT) D = 6°29'58.3" T = 88.01 L = 175.65 R = 90000	PI Sta 34+39.64 Δ = 3°47'58.4" (LT) D = 6°09'51.7" T = 277.62 L = 538.74 R = 90500	PI Sta 40+43.60 Δ = 87°41'52.3" (RT) D = 6°29'58.3" T = 148.01 L = 293.71 R = 90000	PI Sta 43+37.30 Δ = 87°41'52.3" (LT) D = 6°29'58.3" T = 148.01 L = 293.71 R = 90000	PI Sta 50+28.69 Δ = 2°39'54.0" (RT) D = 7°23'34.8" T = 148.25 L = 293.05 R = 77500
--	---	---	--	--	---



LEGEND

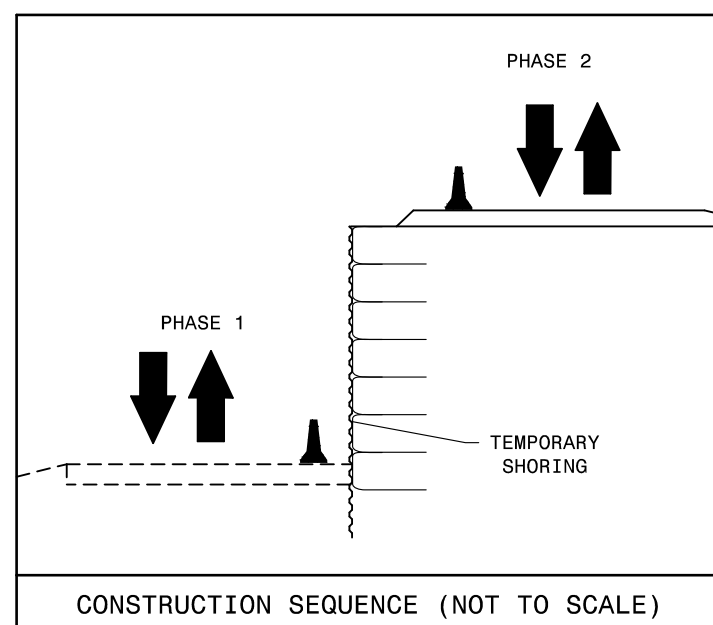
- BUILDINGS
- EXISTING RIGHT OF WAY (GIS)
- PROPOSED RIGHT OF WAY
- PROPOSED EASEMENTS (DRAINAGE, CONSTRUCTION, AND UTILITY)
- EXISTING ROADWAY
- EXISTING ROADWAY TO BE REMOVED
- PROPOSED ROADWAY
- PROPOSED STRUCTURES, ISLAND, CURB AND GUTTER
- EXISTING RR RIGHT OF WAY
- LAKES, RIVER, STREAMS AND PONDS
- EXISTING UTILITY EASEMENT
- PROPERTY LINES (GIS)
- EXISTING TRAFFIC SIGNAL
- WETLAND LIMITS BOUNDARY

PUBLIC MEETING MAP
TIP PROJECT: P-5713
GUILFORD COUNTY
NORTH CAROLINA RAILROAD (NCRR) /
NORFOLK SOUTHERN RAILROAD,
SR 1424 (HILLTOP RD) IN GREENSBORO
CONVERT AT-GRADE
CROSSING TO GRADE SEPARATION
ALTERNATIVE B
SHEET 1 OF 1



PUBLIC MEETING MAP
TIP PROJECT: P-5713
GUILFORD COUNTY
NORTH CAROLINA RAILROAD (NCRR) /
NORFOLK SOUTHERN RAILROAD,
SR 1424 (HILLTOP RD) IN GREENSBORO
CONVERT AT-GRADE
CROSSING TO GRADE SEPARATION
ALTERNATIVE B
SHEET 1 OF 1

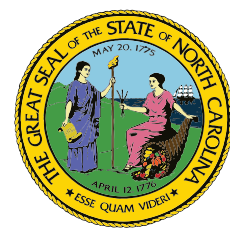
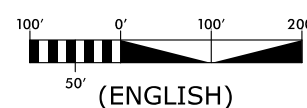




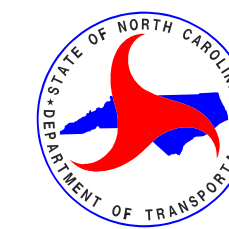
PRELIMINARY PLANS
DO NOT USE FOR CONSTRUCTION

DESIGN DATA
Functional Class. = MINOR ARTERIAL
Design Speed = 40 MPH
Max Superelev. = 0.04

DRIVEWAY NOTE
DRIVEWAY LOCATION AND SIZE ARE PRELIMINARY AND ARE SUBJECT TO CHANGE BASED ON FINAL DESIGNS.



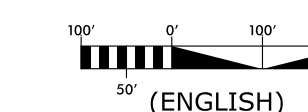
PUBLIC MEETING MAP
TIP PROJECT: P-5713
GUILFORD COUNTY
NORTH CAROLINA RAILROAD (NCRR) /
NORFOLK SOUTHERN RAILROAD,
SR 1424 (HILLTOP RD) IN GREENSBORO
CONVERT TO GRADE SEPARATION
ALTERNATIVE E
SHEET 1 OF 1



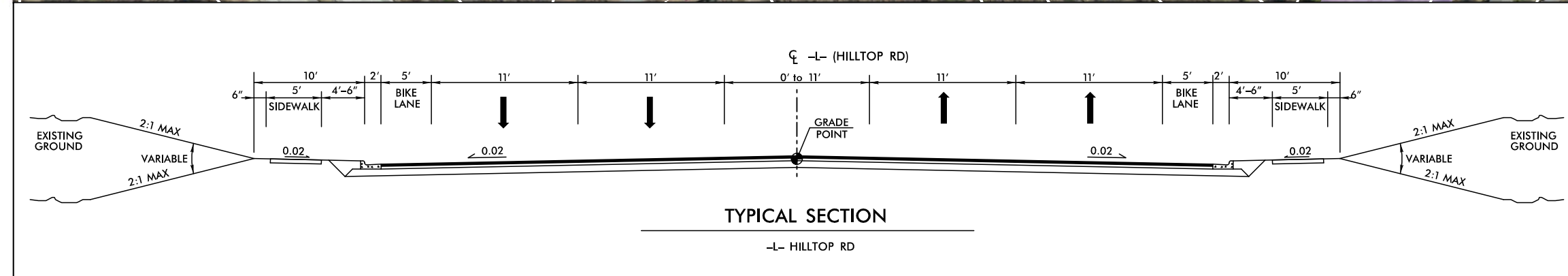
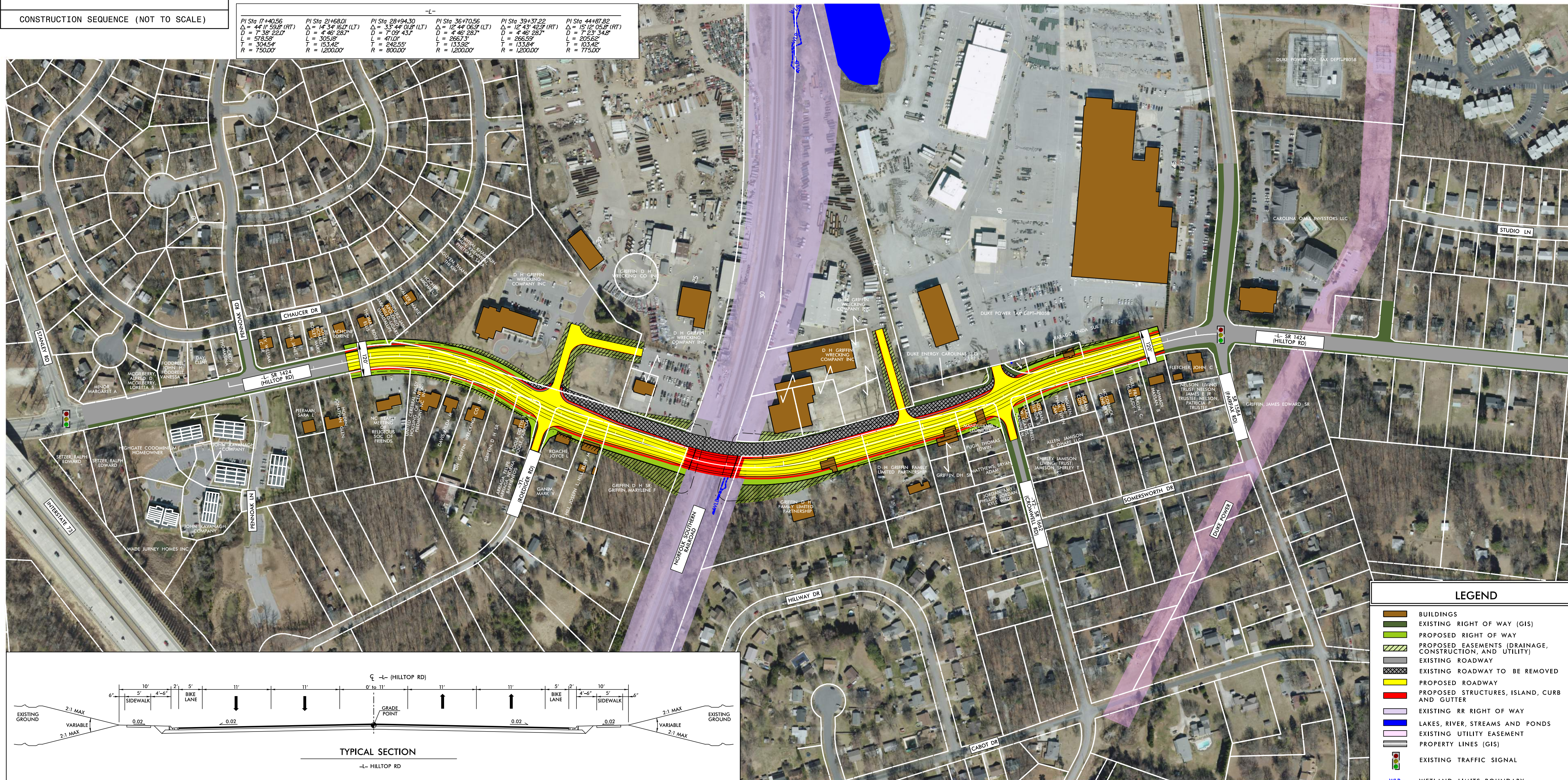
PRELIMINARY PLANS
DO NOT USE FOR CONSTRUCTION

DESIGN DATA
Functional Class. = MINOR ARTERIAL
Design Speed = 40 MPH
Max Superelev. = 0.04

DRIVEWAY NOTE
DRIVEWAY LOCATION AND SIZE ARE PRELIMINARY AND ARE SUBJECT TO CHANGE BASED ON FINAL DESIGNS.

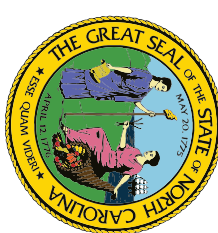


PI Sta 17+40.56 D = 7.38' (RT) L = 578.59' T = 304.54' R = 750.00'	PI Sta 21+68.01 D = 4.46' (LT) L = 305.39' T = 153.45' R = 1200.00'	PI Sta 28+94.30 D = 3.44' (LT) L = 471.07' T = 246.25' R = 800.00'	PI Sta 36+10.56 D = 12.44' (LT) L = 268.73' T = 133.38' R = 1200.00'	PI Sta 39+37.22 D = 4.46' (RT) L = 268.73' T = 133.38' R = 1200.00'	PI Sta 44+87.82 D = 15.12' (RT) L = 205.52' T = 103.58' R = 775.00'
--	---	--	--	---	---



LEGEND

- BUILDINGS
- EXISTING RIGHT OF WAY (GIS)
- PROPOSED RIGHT OF WAY
- PROPOSED EASEMENTS (DRAINAGE, CONSTRUCTION, AND UTILITY)
- EXISTING ROADWAY
- EXISTING ROADWAY TO BE REMOVED
- PROPOSED ROADWAY
- PROPOSED STRUCTURES, ISLAND, CURB AND GUTTER
- EXISTING RR RIGHT OF WAY
- LAKES, RIVER, STREAMS AND PONDS
- EXISTING UTILITY EASEMENT
- PROPERTY LINES (GIS)
- EXISTING TRAFFIC SIGNAL
- WETLAND LIMITS BOUNDARY

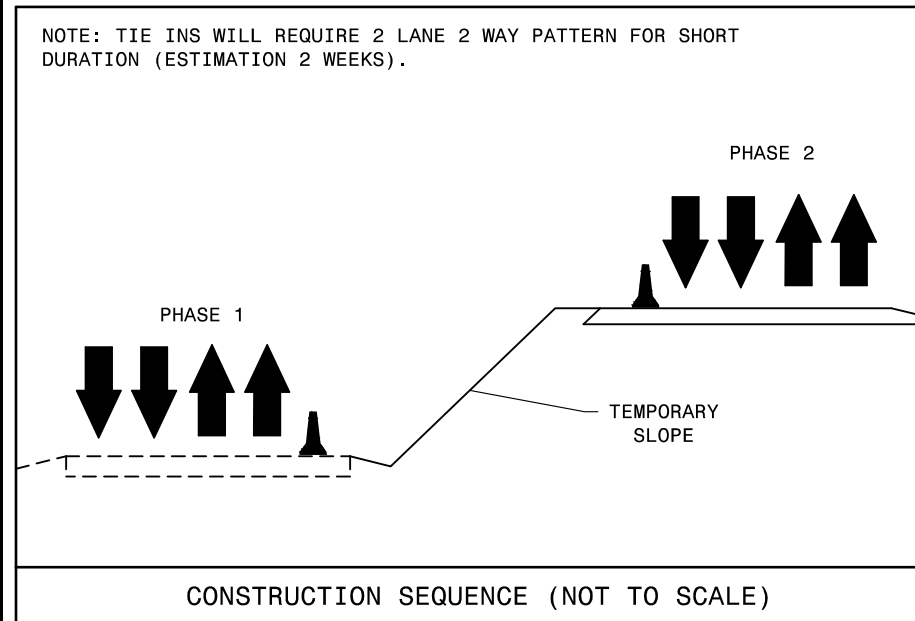


PUBLIC MEETING MAP
TIP PROJECT: P-5713
GUILFORD COUNTY
NORTH CAROLINA RAILROAD (NCRR) /
NORFOLK SOUTHERN RAILROAD,
SR 1424 (HILLTOP RD) IN GREENSBORO
CONVERT AT-GRADE
CROSSING TO GRADE SEPARATION
ALTERNATIVE E
SHEET 1 OF 1



PUBLIC MEETING MAP
TIP PROJECT: P-5713
GUILFORD COUNTY
NORTH CAROLINA RAILROAD (NCRR) /
NORFOLK SOUTHERN RAILROAD,
SR 1424 (HILLTOP RD) IN GREENSBORO
CONVERT AT-GRADE
CROSSING TO GRADE SEPARATION
ALTERNATIVE E
SHEET 1 OF 1





PRELIMINARY PLANS
DO NOT USE FOR CONSTRUCTION

DESIGN DATA
Functional Class. = MINOR ARTERIAL
Design Speed = 40 MPH
Max Superlev. = 0.04

DRIVEWAY NOTE
DRIVEWAY LOCATION AND SIZE ARE PRELIMINARY AND ARE SUBJECT TO CHANGE BASED ON FINAL DESIGNS.

(ENGLISH)

+L-			
PI Sta 17+49.83	PI Sta 28+56.79	PI Sta 40+35.47	PI Sta 45+38.55
Δ = 49.24' (RT)	Δ = 57.47' (LT)	Δ = 8.09' (RT)	Δ = 19.12' (RT)
D = 7.38' (22.2')	D = 5.43' (16.5')	D = 4.46' (13.6')	D = 7.23' (22.0')
L = 5944.3'	L = 12056.5'	L = 17037.0'	L = 20052.5'
T = 33.20'	T = 53.05'	T = 63.26'	T = 63.42'
R = 7500.00'	R = 12000.00'	R = 12000.00'	R = 775.00'

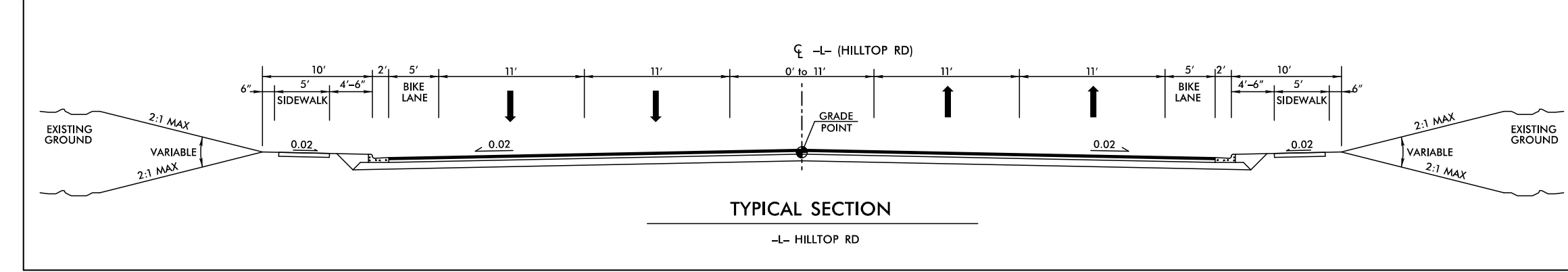
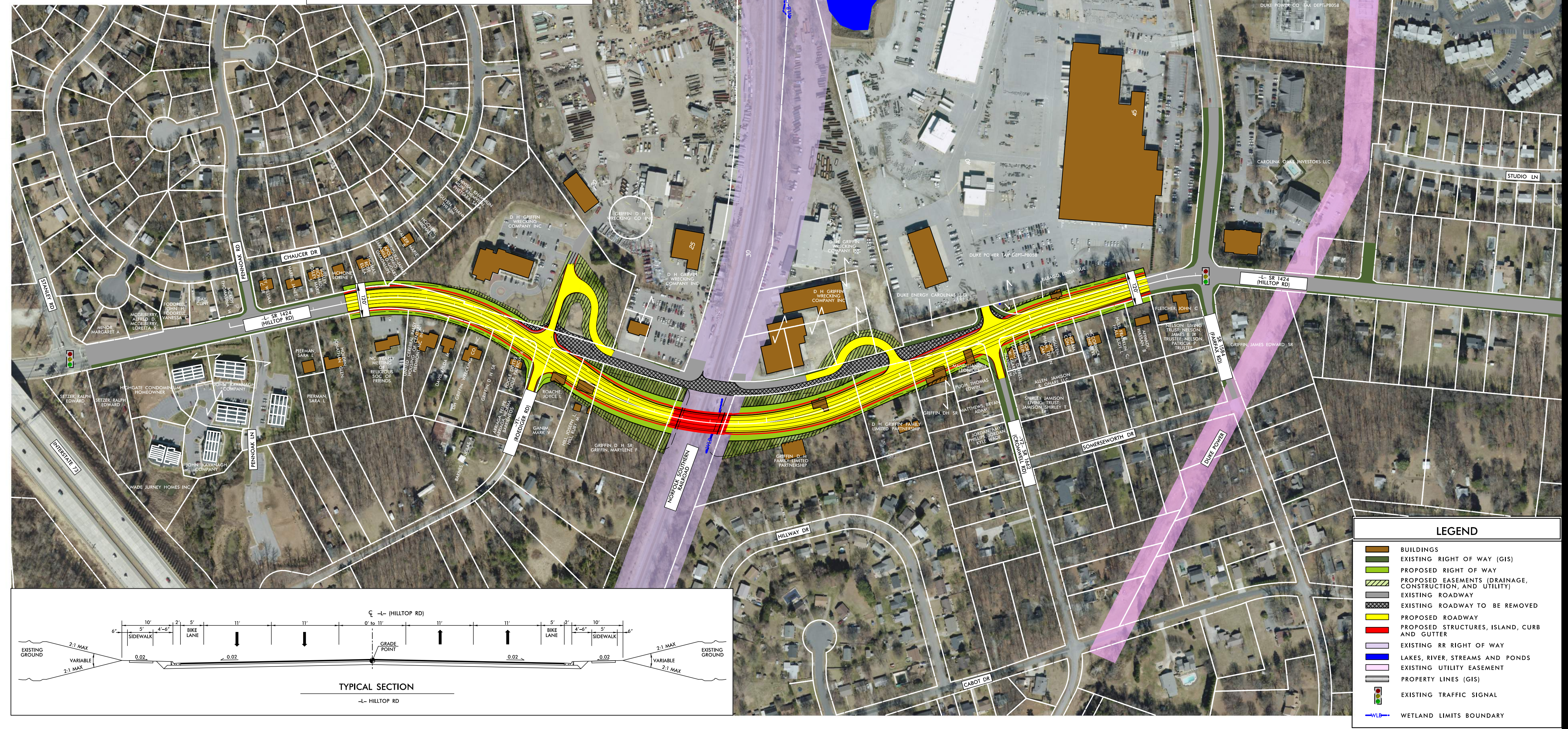
PUBLIC MEETING MAP
TIP PROJECT: P-5713
GUILFORD COUNTY
NORTH CAROLINA RAILROAD (NCRR) /
NORFOLK SOUTHERN RAILROAD,
SR 1424 (HILLTOP RD) IN GREENSBORO.
CONVERT AT-GRADE
CROSSING TO GRADE SEPARATION
ALTERNATIVE F
SHEET 1 OF 1

PRELIMINARY PLANS
DO NOT USE FOR CONSTRUCTION

DESIGN DATA
Functional Class. = MINOR ARTERIAL
Design Speed = 40 MPH
Max Superlev. = 0.04

DRIVEWAY NOTE
DRIVEWAY LOCATION AND SIZE ARE PRELIMINARY AND ARE SUBJECT TO CHANGE BASED ON FINAL DESIGNS.

(ENGLISH)



PUBLIC MEETING MAP
TIP PROJECT: P-5713
GUILFORD COUNTY
NORTH CAROLINA RAILROAD (NCRR) /
NORFOLK SOUTHERN RAILROAD,
SR 1424 (HILLTOP RD) IN GREENSBORO.
CONVERT AT-GRADE
CROSSING TO GRADE SEPARATION
ALTERNATIVE F
SHEET 1 OF 1

PUBLIC MEETING MAP
TIP PROJECT: P-5713
GUILFORD COUNTY
NORTH CAROLINA RAILROAD (NCRR) /
NORFOLK SOUTHERN RAILROAD,
SR 1424 (HILLTOP RD) IN GREENSBORO.
CONVERT AT-GRADE
CROSSING TO GRADE SEPARATION
ALTERNATIVE F
SHEET 1 OF 1