

LEGEND

- BUILDINGS
- EXISTING RIGHT OF WAY
- PROPOSED RIGHT OF WAY
- PROPOSED EASEMENTS (DRAINAGE, CONSTRUCTION, AND UTILITY)
- EXISTING ROADWAY
- PROPOSED ROADWAY
- PROPOSED STRUCTURES, ISLAND, CURB AND GUTTER
- EXISTING STRUCTURES, ISLAND, CURB AND GUTTER TO BE RETAINED
- EXISTING STRUCTURES, ISLAND, CURB AND GUTTER TO BE REMOVED
- PROPERTY LINES
- HISTORIC PROPERTY BOUNDARY
- EXISTING TRAFFIC SIGNAL
- PROPOSED TRAFFIC SIGNAL

PUBLIC MEETING MAP
PROJECT R-5725
GUILFORD COUNTY
PROPOSED IMPROVEMENTS TO NC 68 FROM
FOGLEMAN ROAD (SR 2129) TO NC 150/OAK RIDGE
ROAD (SR 2137)
ALTERNATE 1



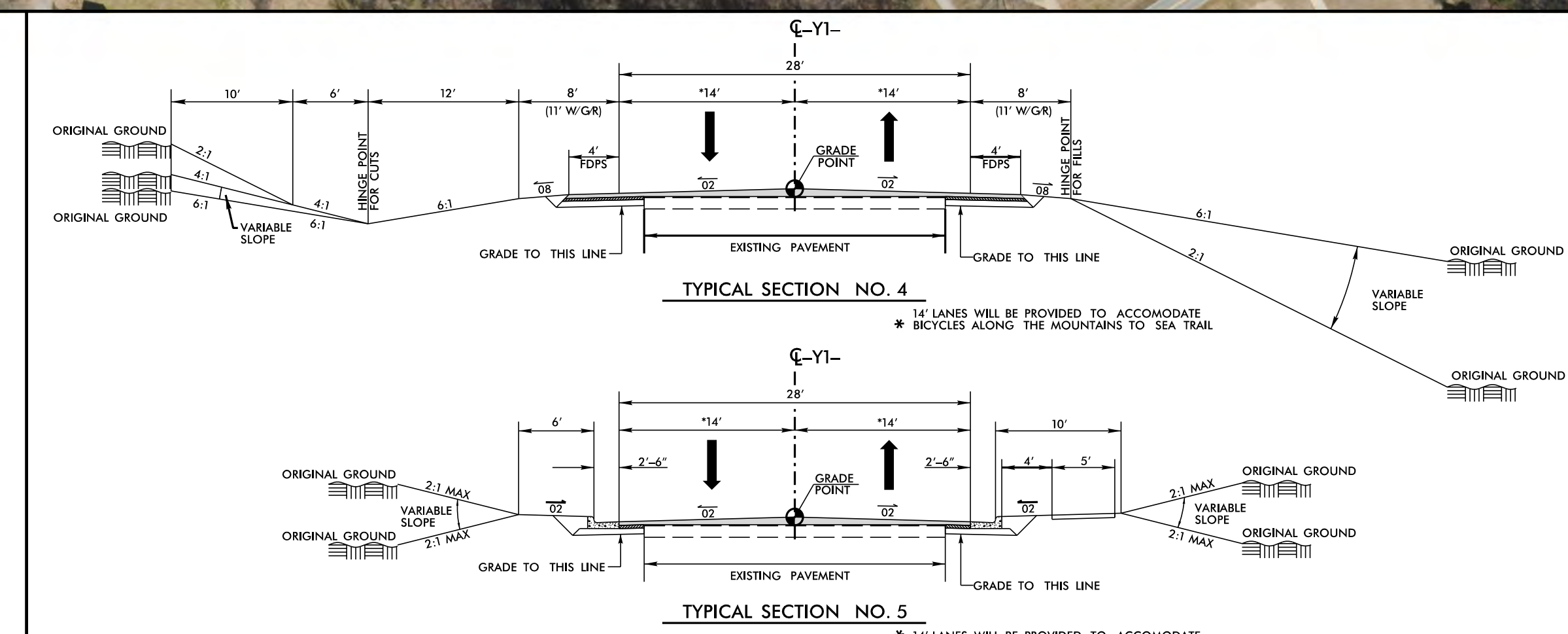
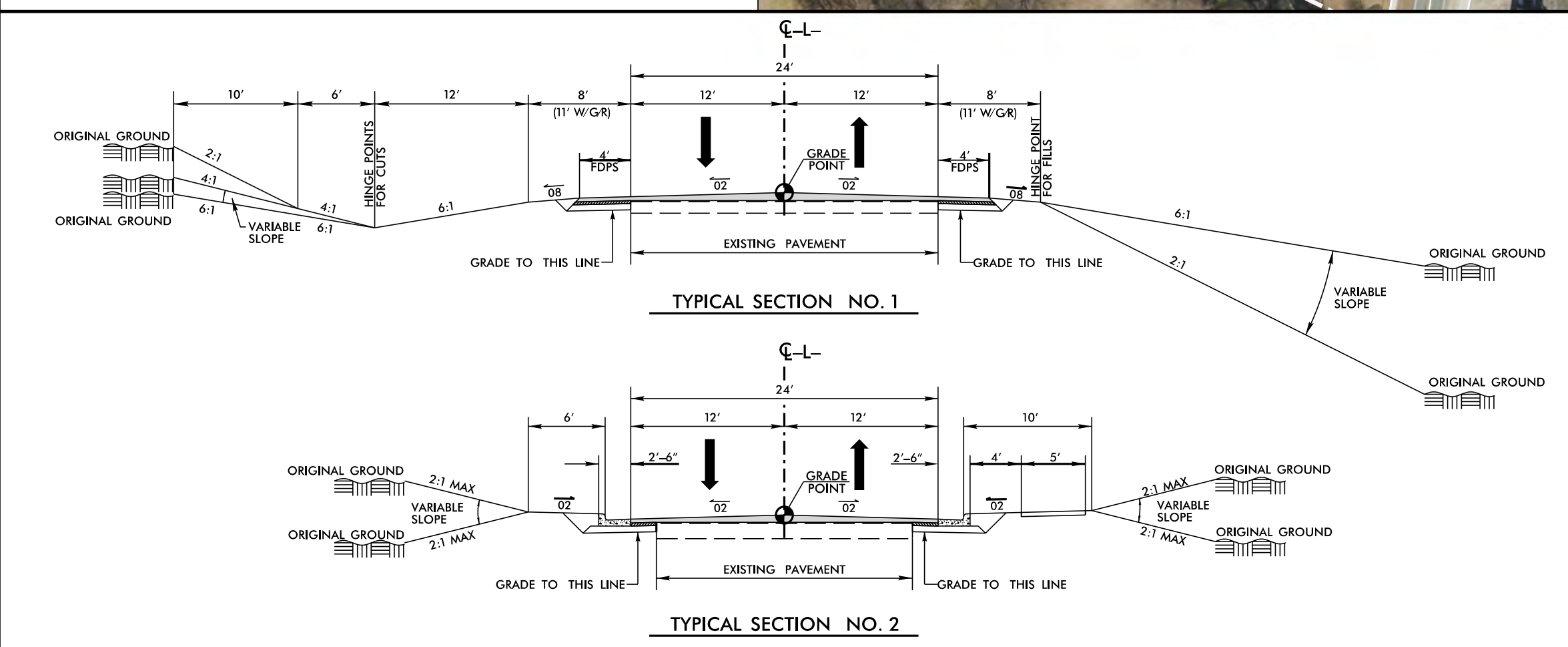
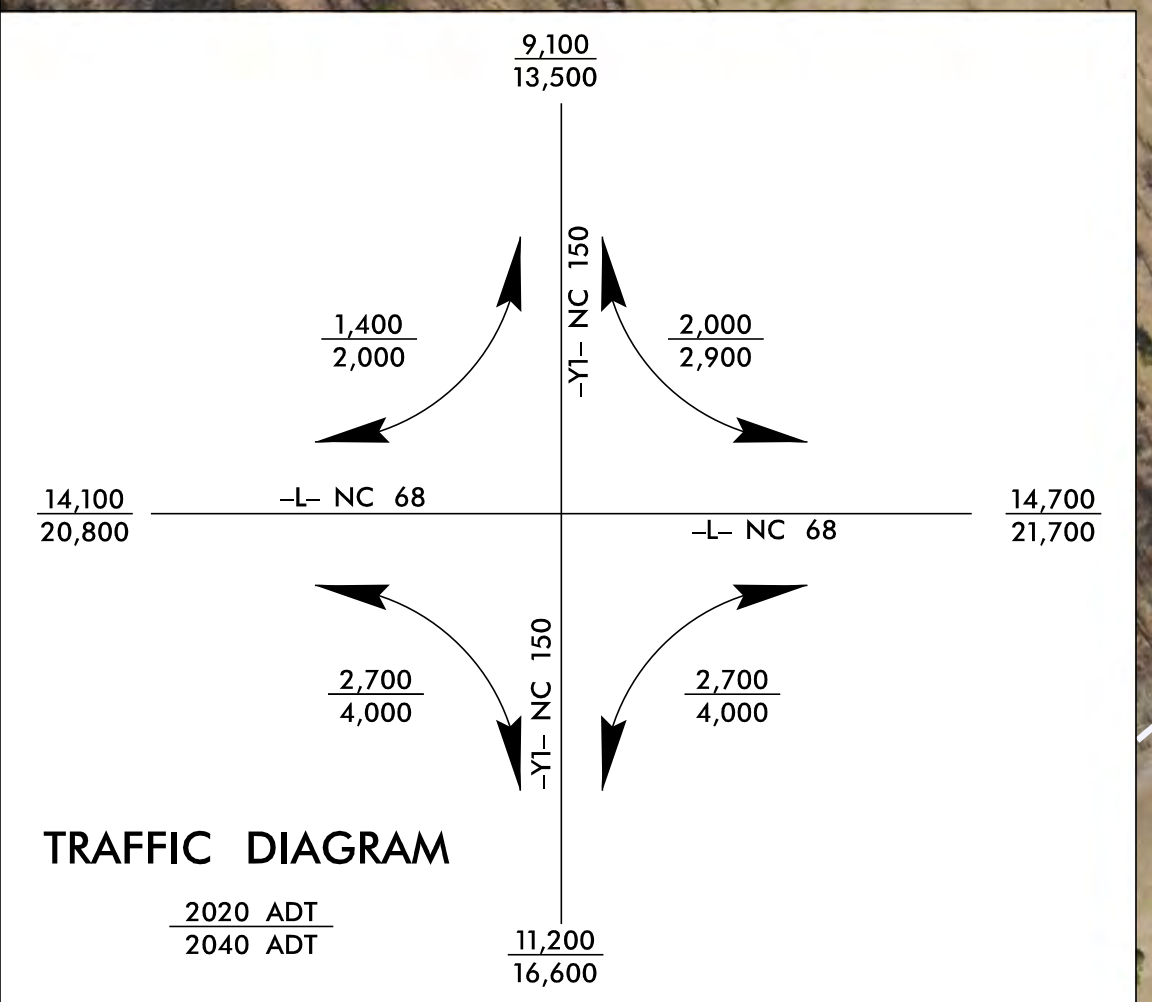
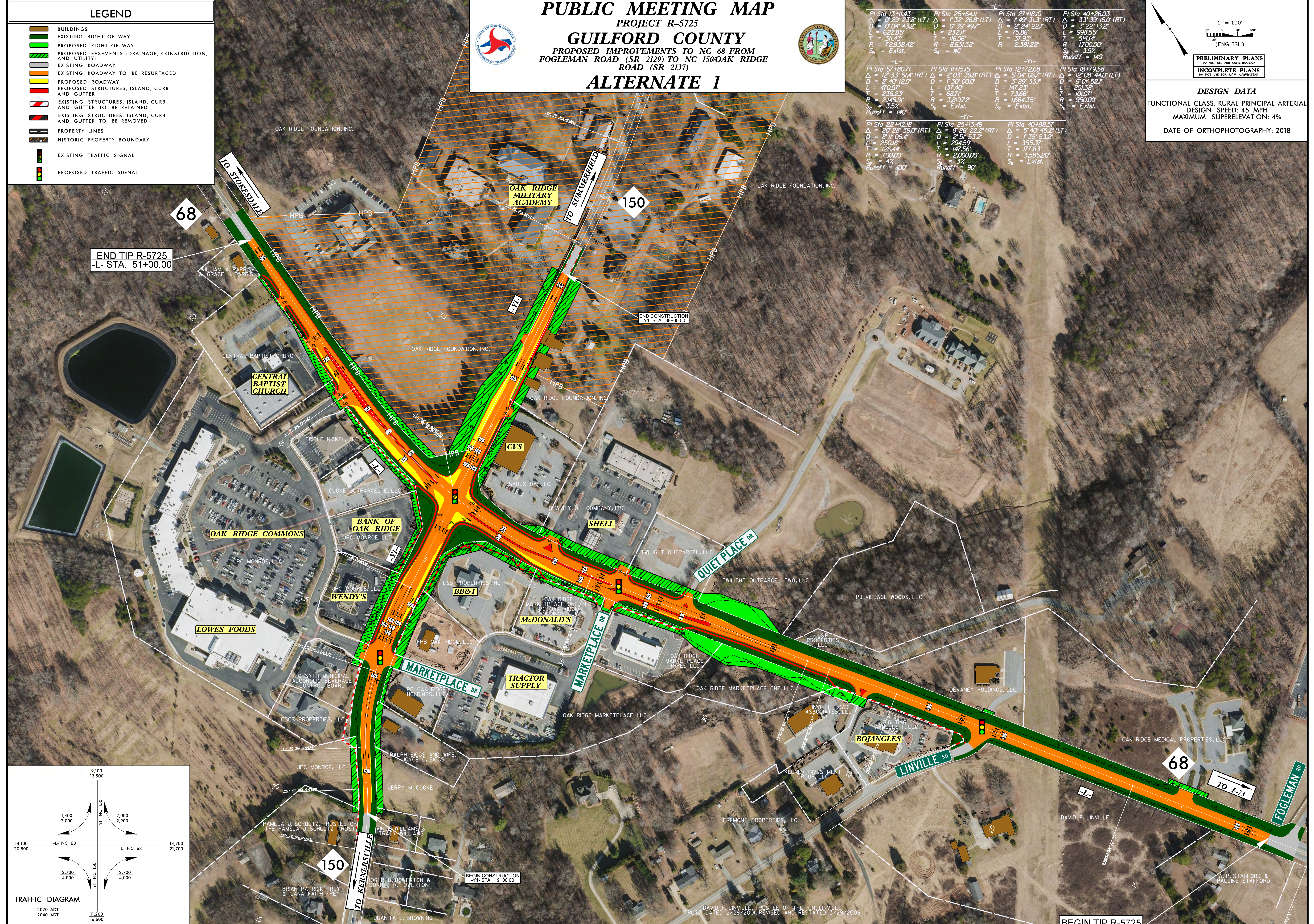
PI Sta 13+14.43 Δ = 0° 29' 23.8" (LT) D = 0' 04' 43.2" L = 622.85' T = 314.83' R = 72.838.42' S _e = Exist.	PI Sta 25+64.11 Δ = 1° 32' 26.8" (LT) D = 0' 39' 49.7" L = 232.11' T = 116.05' R = 8.631.32' S _e = NC	PI Sta 27+18.10 Δ = 1° 49' 31.3" (RT) D = 2' 24' 22.1" L = 75.88' T = 37.93' R = 2.381.22' S _e = Exist.	PI Sta 40+26.03 Δ = 3° 33' 39.16" (RT) D = 3' 22' 13.2" L = 998.55' T = 514.44' R = 1700.00' S _e = 3.5% Runoff = 140'
PI Sta 57+80.71 Δ = 12° 33' 51.4" (RT) D = 2' 40' 12.0" L = 470.57' T = 236.23' R = 2145.91' S _e = 4.7% Runoff = 100'	PI Sta 11+15.15 Δ = 2° 03' 39.8" (RT) D = 1' 30' 00.0" L = 137.40' T = 68.71' R = 3.819.72' S _e = Exist.	PI Sta 12+72.68 Δ = 5° 04' 06.7" (RT) D = 3' 26' 33.1" L = 147.23' T = 73.66' R = 1564.35' S _e = Exist.	PI Sta 18+79.58 Δ = 12° 08' 44.0" (LT) D = 5' 01' 52.1" L = 201.58' T = 101.07' R = 950.00' S _e = Exist.
PI Sta 22+42.18 Δ = 20° 28' 39.0" (RT) D = 8' 11' 06.4" L = 250.18' T = 126.44' R = 700.00' S _e = 4.7% Runoff = 100'	PI Sta 25+13.49 Δ = 6° 26' 23.2" (RT) D = 2' 57' 53.2" L = 294.59' T = 147.56' R = 2000.00' S _e = 3.7% Runoff = 90'	PI Sta 40+88.57 Δ = 5° 40' 45.2" (LT) D = 1' 35' 9.32" L = 355.37' T = 177.83' R = 3.565.20' S _e = Exist.	

1" = 100'
25' 0" 50' 0" 75' 0" 100' 0"
(ENGLISH)

PRELIMINARY PLANS
DO NOT USE FOR CONSTRUCTION

INCOMPLETE PLANS
DO NOT USE FOR Bidding

DESIGN DATA
FUNCTIONAL CLASS: RURAL PRINCIPAL ARTERIAL
DESIGN SPEED: 45 MPH
MAXIMUM SUPERELEVATION: 4%
DATE OF ORTHOPHOTOGRAPHY: 2018



UTILITY INFORMATION
UTILITIES ARE NOT SHOWN AS SHOWN ON THESE MAPS OR ON OTHER DISPLAYS. THE UTILITY INFORMATION SHOWN ON THESE MAPS IS LIMITED TO LOCATIONS OF MAJOR EXISTING AND POTENTIAL UTILITY EASEMENTS. THE DESIGN SHOWN ON THESE MAPS INCLUDING UTILITY EASEMENTS, ARE PRELIMINARY AND ARE SUBJECT TO CHANGE.

DERIVATION NOTE
DERIVATIONS ARE NOT SHOWN AS SHOWN ON THESE MAPS OR ON OTHER DISPLAYS. THE UTILITY INFORMATION SHOWN ON THESE MAPS IS LIMITED TO LOCATIONS OF MAJOR EXISTING AND POTENTIAL UTILITY EASEMENTS. THE DESIGN SHOWN ON THESE MAPS INCLUDING UTILITY EASEMENTS, ARE PRELIMINARY AND ARE SUBJECT TO CHANGE.

STEWART