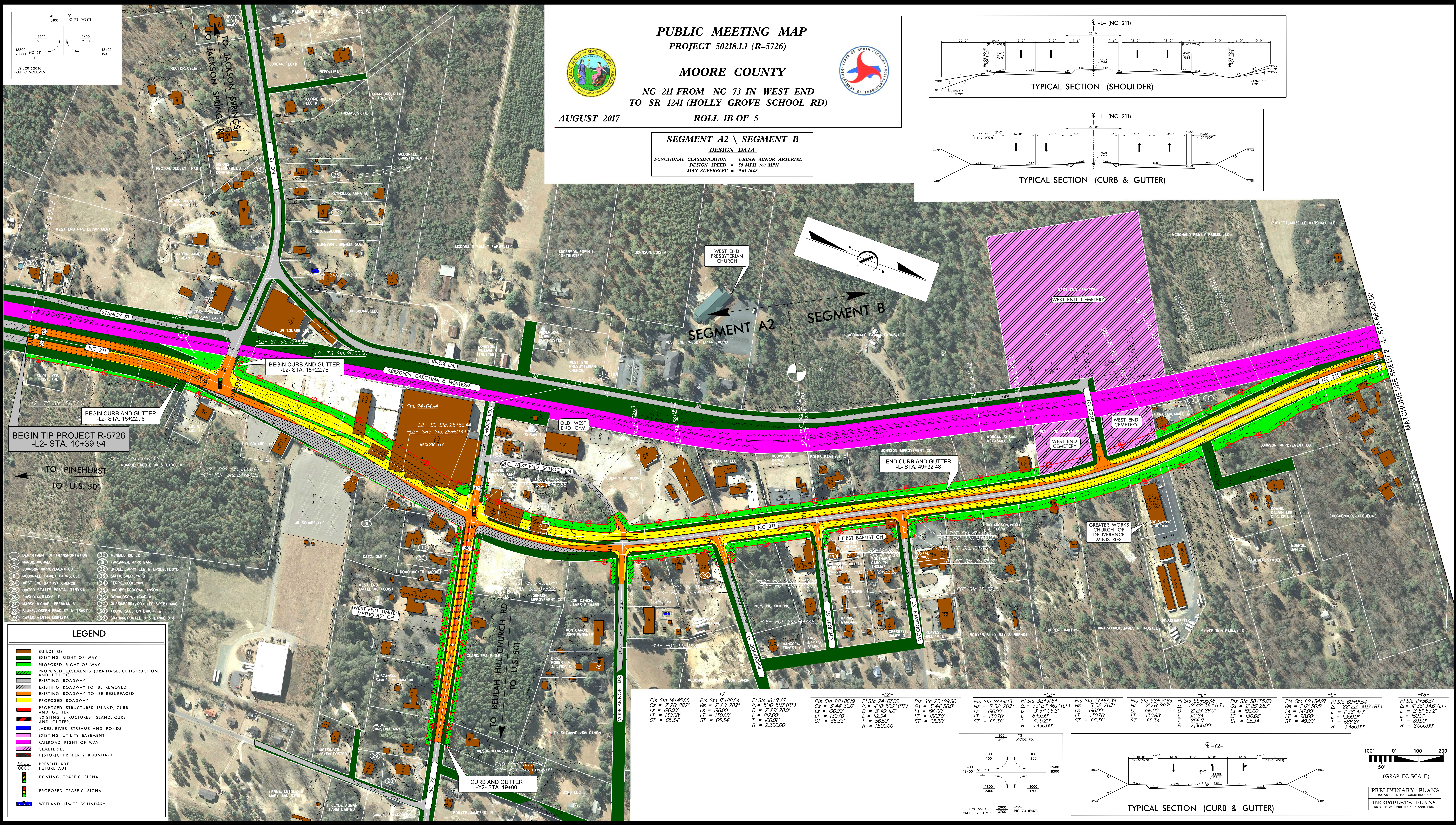
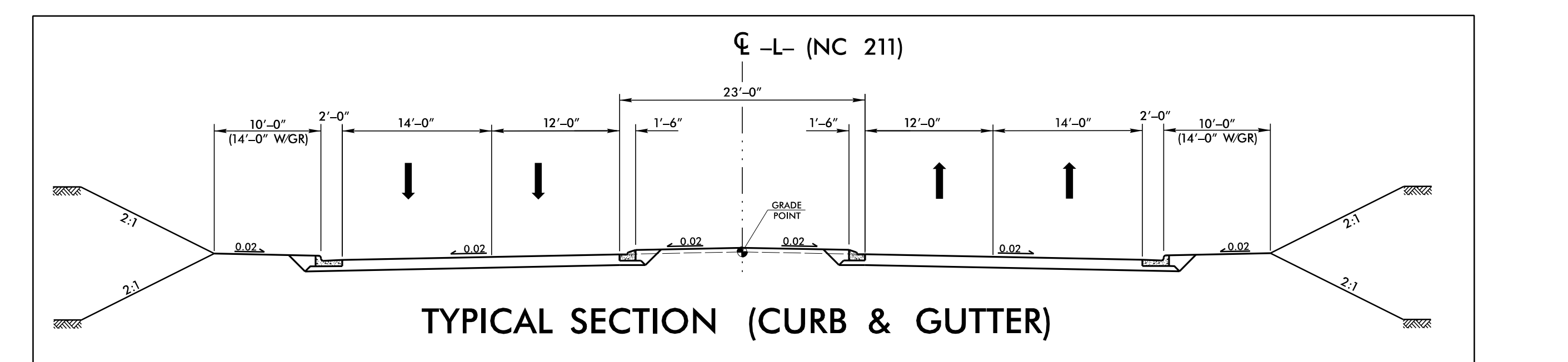
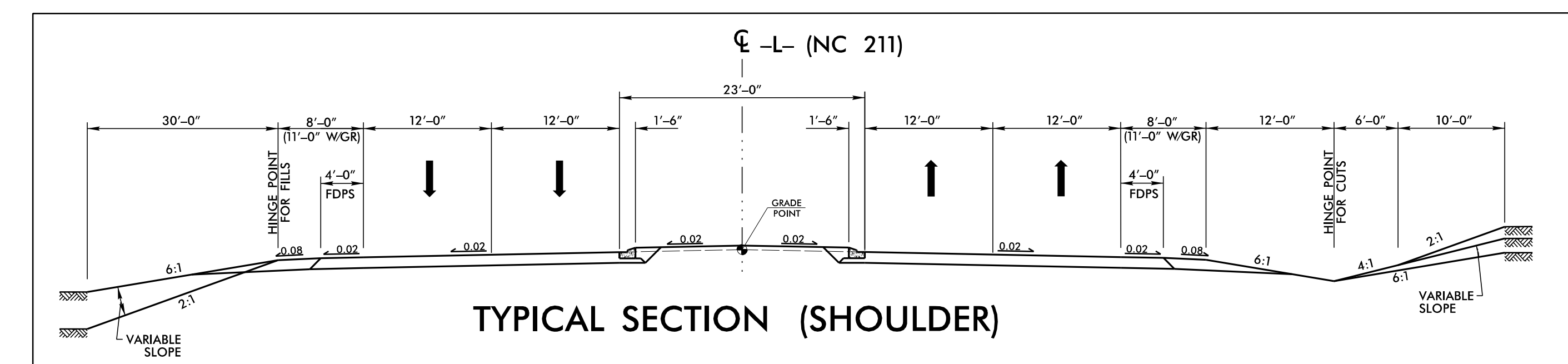


PUBLIC MEETING MAP
PROJECT 50218.1.1 (R-5726)
MOORE COUNTY
NC 211 FROM NC 73 IN WEST END
TO SR 1241 (HOLLY GROVE SCHOOL RD)
AUGUST 2017 **ROLL 1B OF 5**

SEGMENT A2 \ SEGMENT B
DESIGN DATA
 FUNCTIONAL CLASSIFICATION = URBAN MINOR ARTERIAL
 DESIGN SPEED = 50 MPH / 60 MPH
 MAX SUPERELEV. = 0.04 / 0.08

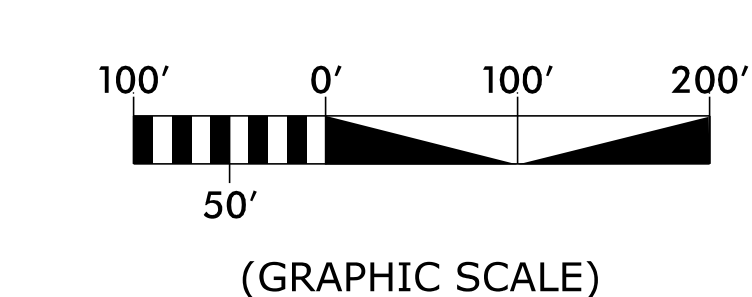
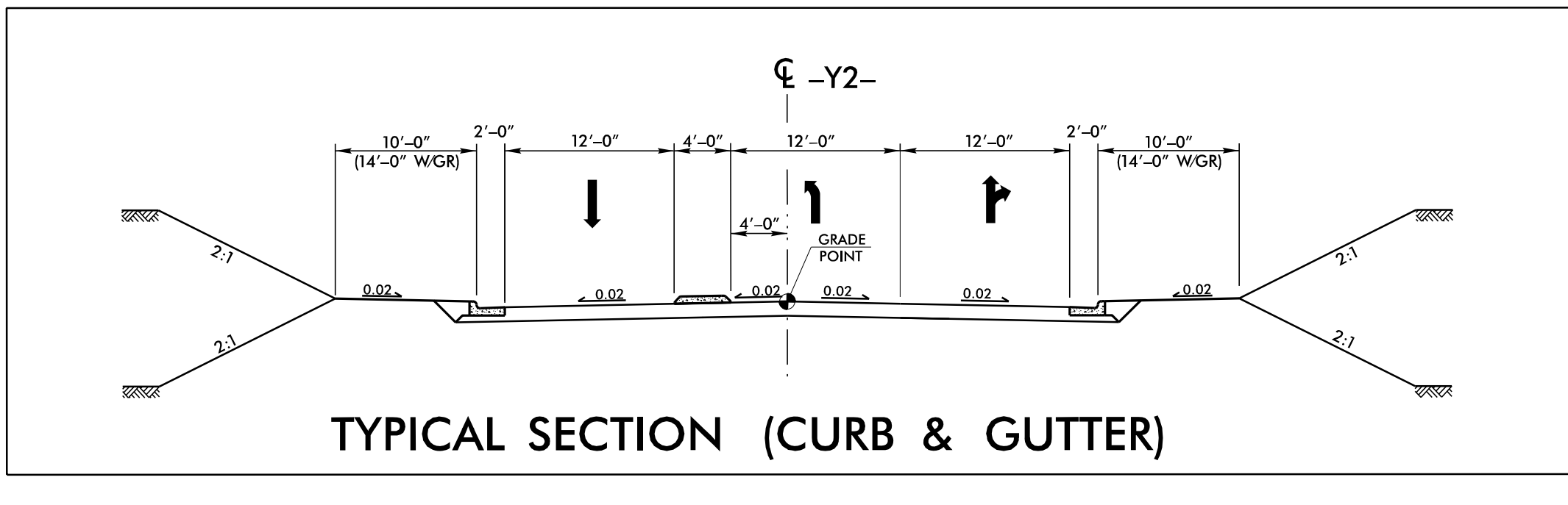
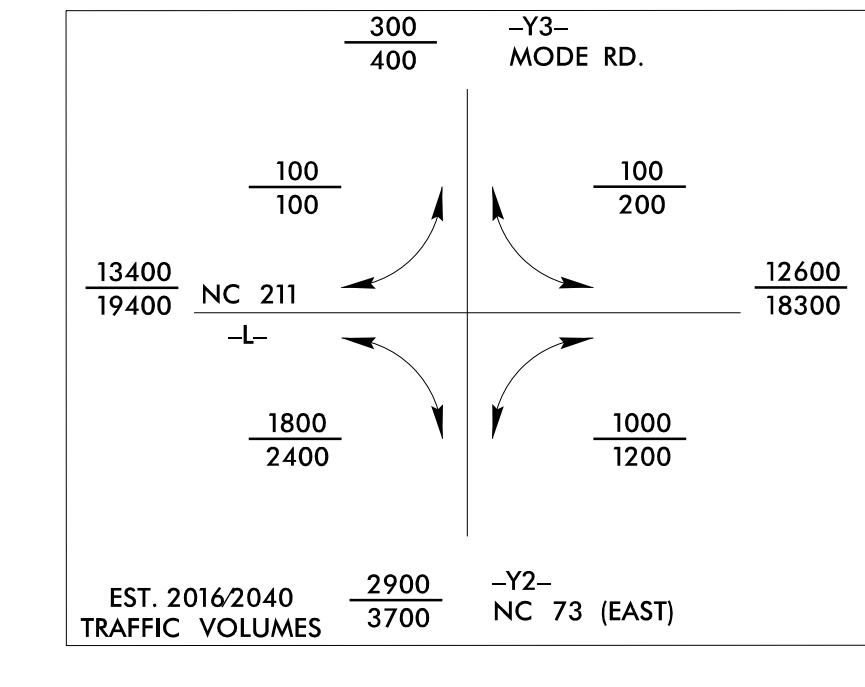


- 1 DEPARTMENT OF TRANSPORTATION
- 2 HARD, MICHAEL
- 3 JOHNSON IMPROVEMENT CO
- 4 MCDONALD FAMILY FARMS, LLC
- 5 WEST END BAPTIST CHURCH
- 6 UNITED STATES POSTAL SERVICE
- 7 CHISHOLM, RACHEL E
- 8 MARSH, MICHAEL BRENNAN W
- 9 BLANK, JOSEPH BRADLEY A TRACY
- 10 CASAS, MARTIN MORALES
- 11 MONELL DR CO
- 12 KARSNER, MARK EARL
- 13 UPOLE, LARRY LEE E UPOLE, FLOYD
- 14 SMITH, SHERLYN B
- 15 FERRE, WOOLLYM
- 16 JACOBS, DEBORAH WILSON
- 17 DONALDSON, JACKIE M
- 18 QUEENBERRY, ROY LEE AREBA MAE
- 19 YOUNG, SHELTON DWIGHT A
- 20 GRAMM, RONALD O & LYNN B B

LEGEND

- BUILDINGS
- EXISTING RIGHT OF WAY
- PROPOSED RIGHT OF WAY
- PROPOSED EASEMENTS (DRAINAGE, CONSTRUCTION, AND UTILITY)
- EXISTING ROADWAY
- EXISTING ROADWAY TO BE REMOVED
- EXISTING ROADWAY TO BE RESURFACED
- PROPOSED ROADWAY
- PROPOSED STRUCTURES, ISLAND, CURB AND GUTTER
- EXISTING STRUCTURES, ISLAND, CURB AND GUTTER
- LAKES, RIVER, STREAMS AND PONDS
- EXISTING UTILITY EASEMENT
- RAILROAD RIGHT OF WAY
- CEMETERIES
- HISTORIC PROPERTY BOUNDARY
- PRESENT ADT
- FUTURE ADT
- EXISTING TRAFFIC SIGNAL
- PROPOSED TRAFFIC SIGNAL
- WETLAND LIMITS BOUNDARY

Pts Sta 14+45.88 Gs = 2'26" 287" Ls = 196.00 Lt = 130.68 St = 65.34	-L2- Pts Sta 17+88.54 Gs = 2'26" 287" Ls = 196.00 Lt = 130.68 St = 65.34	Pts Sta 16+17.27 Δ = 51°5'51" (RT) D = 2'29" 280" L = 212.00 T = 106.00 R = 2,300.00'	-L2- Pts Sta 22+86.19 Gs = 3'44" 360" Ls = 196.00 Lt = 130.70 St = 65.36	-L2- Pts Sta 24+07.99 Δ = 41°50'22" (RT) D = 3'42" 110" L = 112.94 T = 56.50 R = 1,500.00'	-L2- Pts Sta 25+29.80 Gs = 3'44" 360" Ls = 196.00 Lt = 130.70 St = 65.36	-L2- Pts Sta 27+91.13 Gs = 3'52" 207" Ls = 196.00 Lt = 130.70 St = 65.36	-L2- Pts Sta 32+91.64 Δ = 33°24'46.7" (LT) D = 3'57" 65.2" L = 845.59 T = 435.20 R = 1,450.00'	-L2- Pts Sta 37+67.39 Gs = 3'52" 207" Ls = 196.00 Lt = 130.70 St = 65.36	-L- Pts Sta 52+34.99 Gs = 2'26" 287" Ls = 196.00 Lt = 130.68 St = 65.34	-L- Pts Sta 55+56.48 Δ = 12°42'38.1" (LT) D = 2'29" 280" L = 502.24 T = 256.17 R = 2,300.00'	-L- Pts Sta 58+75.89 Gs = 2'26" 287" Ls = 196.00 Lt = 130.68 St = 65.34	-L- Pts Sta 62+54.27 Gs = 1'12" 36.5" Ls = 147.00 Lt = 98.00 St = 49.00	-L- Pts Sta 69+91.54 Δ = 22°22'30.5" (RT) D = 1'38" 47" L = 1,359.01 T = 688.27 R = 3,480.00'	-Y8- Pts Sta 11+56.67 Δ = 4°36' 34.6" (LT) D = 2'51" 53.2" L = 160.91 T = 80.50 R = 2,000.00'
---	---	--	---	--	---	---	--	---	--	--	--	--	---	---



PRELIMINARY PLANS
 DO NOT USE FOR CONSTRUCTION
 INCOMPLETE PLANS
 DO NOT USE FOR R/W ACQUISITION