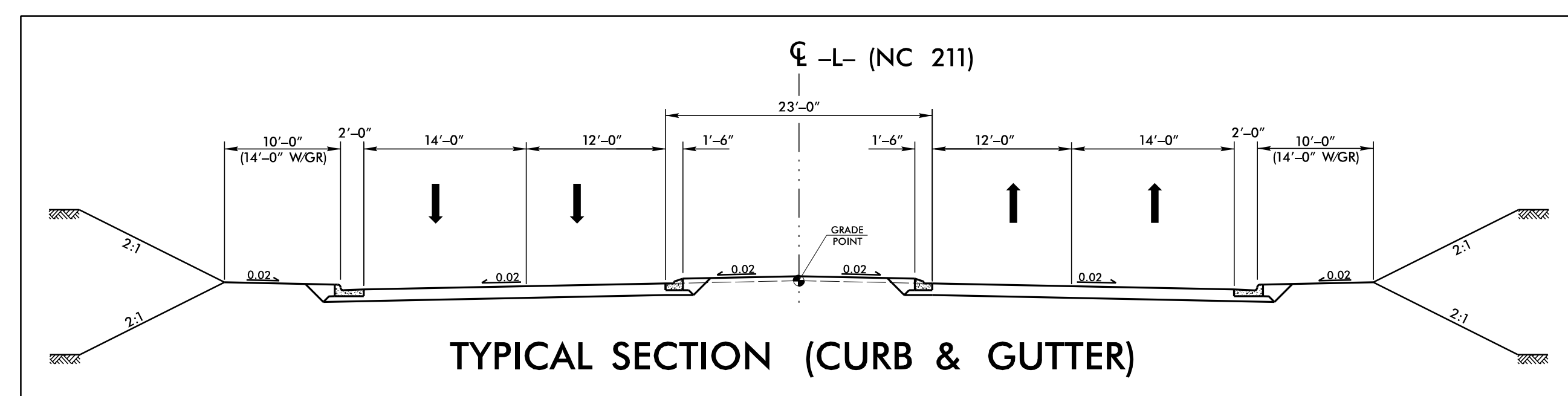


LEGEND

- BUILDINGS
- EXISTING RIGHT OF WAY
- PROPOSED RIGHT OF WAY
- PROPOSED EASEMENTS (DRAINAGE, CONSTRUCTION, AND UTILITY)
- EXISTING ROADWAY
- EXISTING ROADWAY TO BE REMOVED
- EXISTING ROADWAY TO BE RESURFACED
- PROPOSED ROADWAY
- PROPOSED STRUCTURES, ISLAND, CURB AND GUTTER, SIDEWALK
- EXISTING STRUCTURES, ISLAND, CURB AND GUTTER, SIDEWALK TO BE RETAINED
- LAKES, RIVER, STREAMS AND PONDS
- EXISTING UTILITY EASEMENT
- RAILROAD RIGHT OF WAY
- CEMETERIES
- HISTORIC PROPERTY BOUNDARY
- PRESENT ADT
- FUTURE ADT
- EXISTING TRAFFIC SIGNAL
- PROPOSED TRAFFIC SIGNAL
- WETLAND LIMITS BOUNDARY



PUBLIC MEETING MAP

PROJECT 50218.1.1 (R-5726)

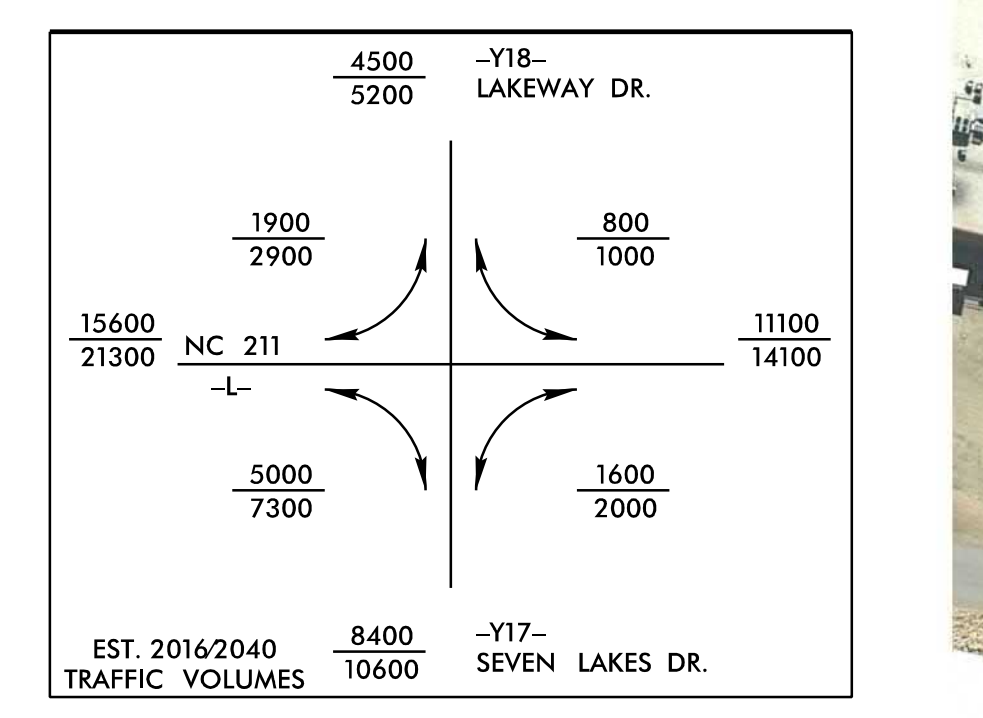
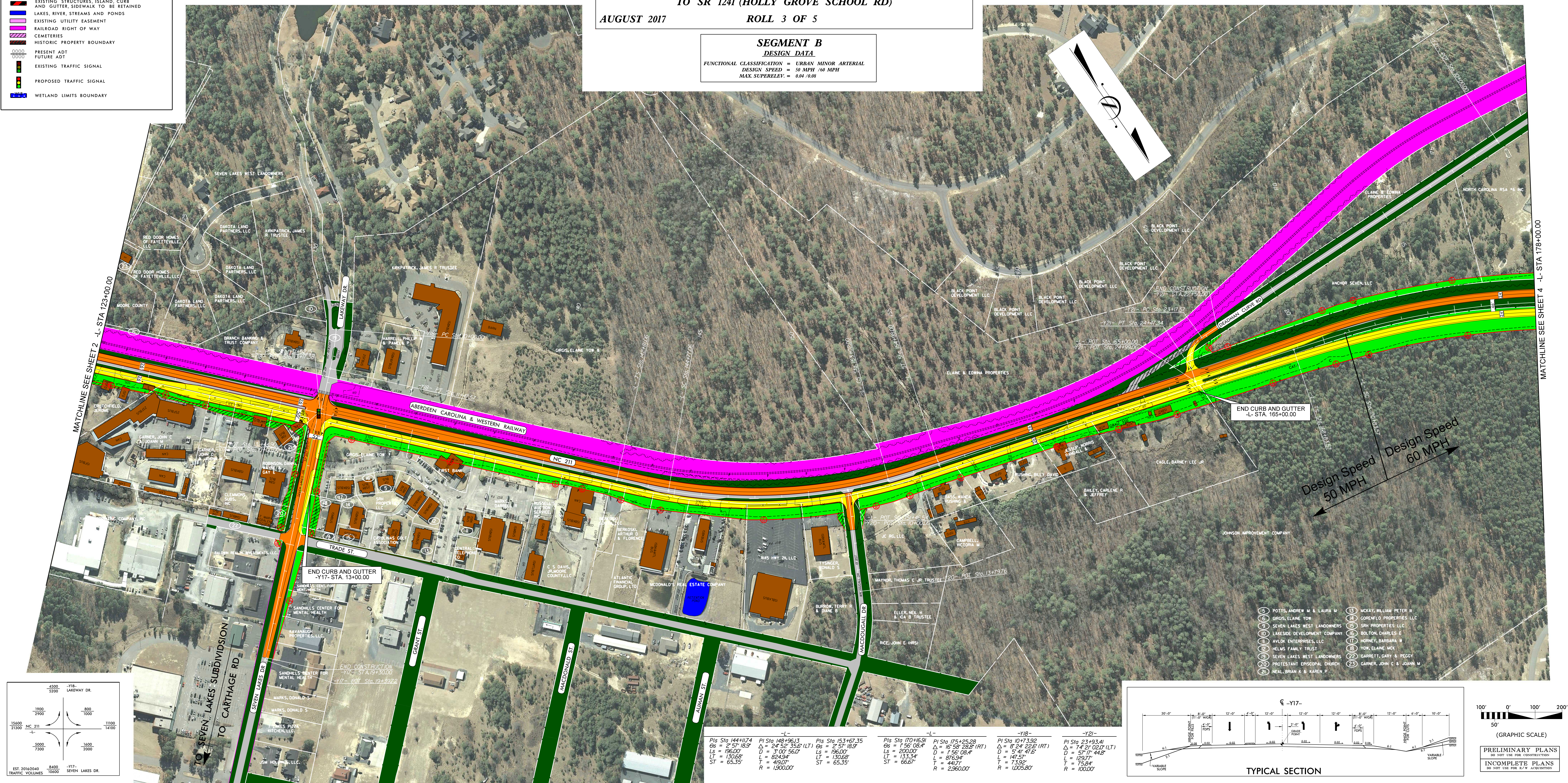
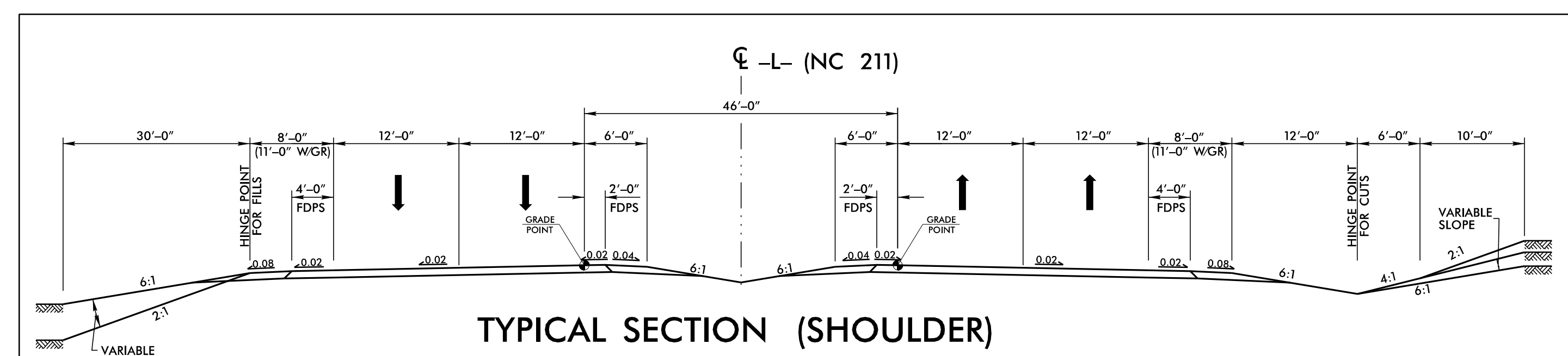
MOORE COUNTY

NC 211 FROM NC 73 IN WEST END TO SR 1241 (HOLLY GROVE SCHOOL RD)

AUGUST 2017 ROLL 3 OF 5

SEGMENT B
DESIGN DATA

FUNCTIONAL CLASSIFICATION = URBAN MINOR ARTERIAL
DESIGN SPEED = 50 MPH / 60 MPH
MAX SUPERELEV. = 0.04 / 0.08



Station	PI	PI	PI	PI	PI	PI	PI
Sta 144+117.4	Sta 148+96.13	Sta 153+67.35	Sta 170+16.91	Sta 175+25.28	Sta 107+3.92	Sta 23+93.41	
Os = 2' 5" 18.9"	Δ = 24' 52" 35.6" (LT)	Os = 2' 5" 18.9"	Os = 1' 56" 08.4"	Δ = 16' 58" 28.8" (RT)	Δ = 6' 24" 22.6" (RT)	Δ = 7' 4" 02.0" (LT)	
Ls = 196.00'	D = 3' 00" 56.0"	Ls = 196.00'	Ls = 200.00'	D = 1' 56" 08.4"	D = 5' 41" 47.6"	D = 5' 7" 44.8"	
LT = 130.68'	L = 824.94'	T = 419.07'	LT = 133.34'	L = 676.94'	L = 147.57'	L = 129.77'	
ST = 65.35'	T = 824.94'	ST = 65.35'	ST = 66.67'	T = 73.92'	T = 441.71'	T = 75.84'	
R = 1,900.00'	R = 1,900.00'	R = 1,900.00'	R = 2,960.00'	R = 1,005.80'	R = 1,000.00'	R = 1,000.00'	

TYPICAL SECTION

1" = 100'

(GRAPHIC SCALE)

PRELIMINARY PLANS
DO NOT USE FOR CONSTRUCTION

INCOMPLETE PLANS
DO NOT USE FOR R/W ACQUISITION

MATCHLINE SEE SHEET 4 - L- STA 178+00.00

MATCHLINE SEE SHEET 2 - L- STA 123+00.00