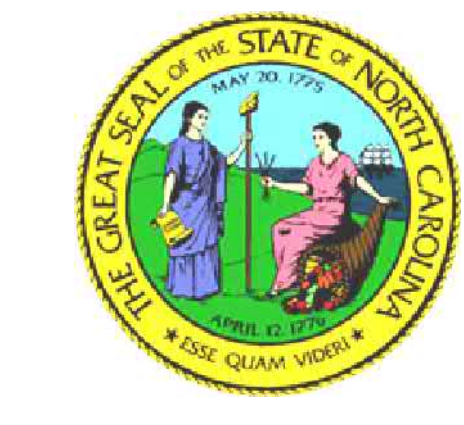
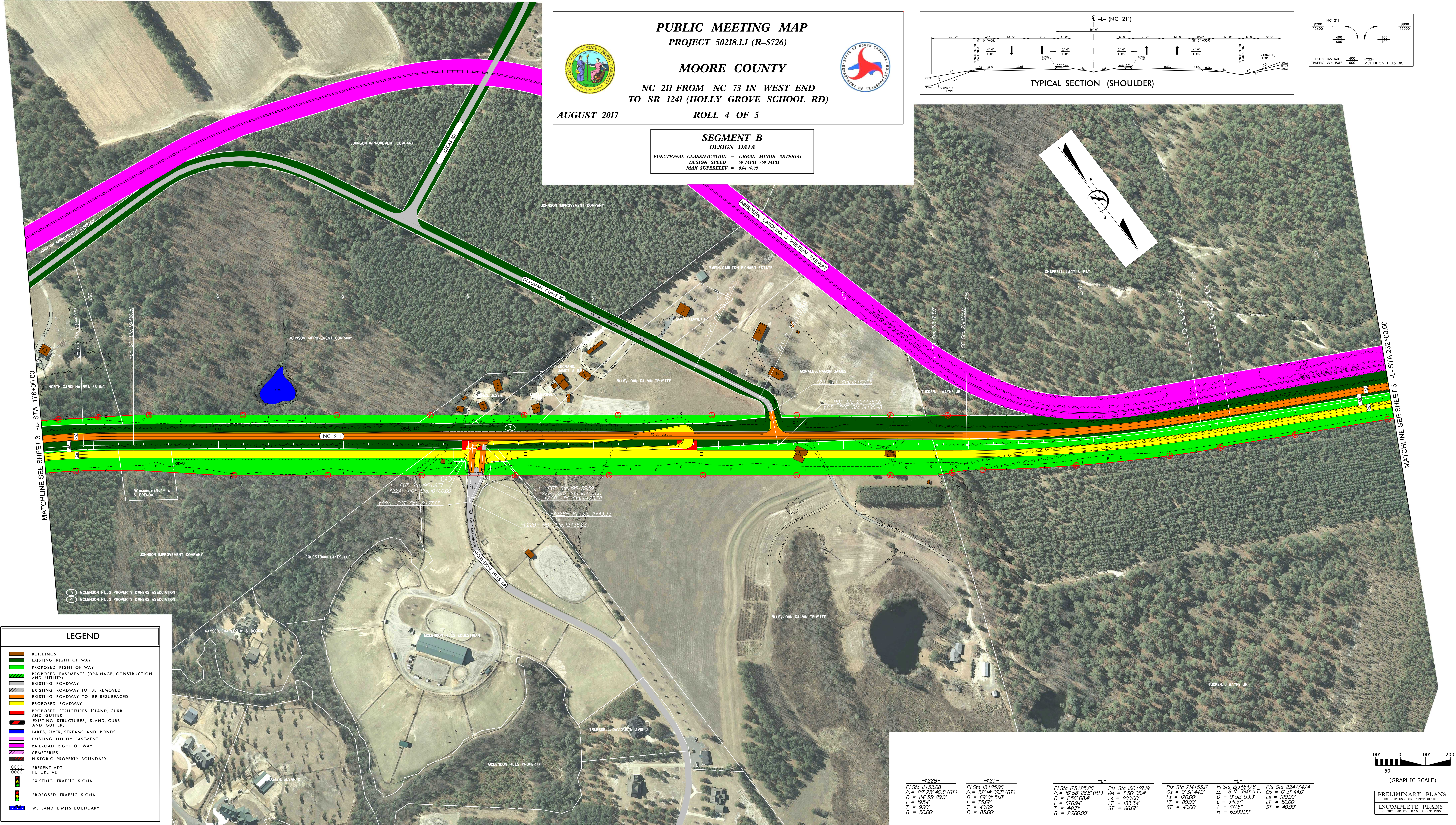
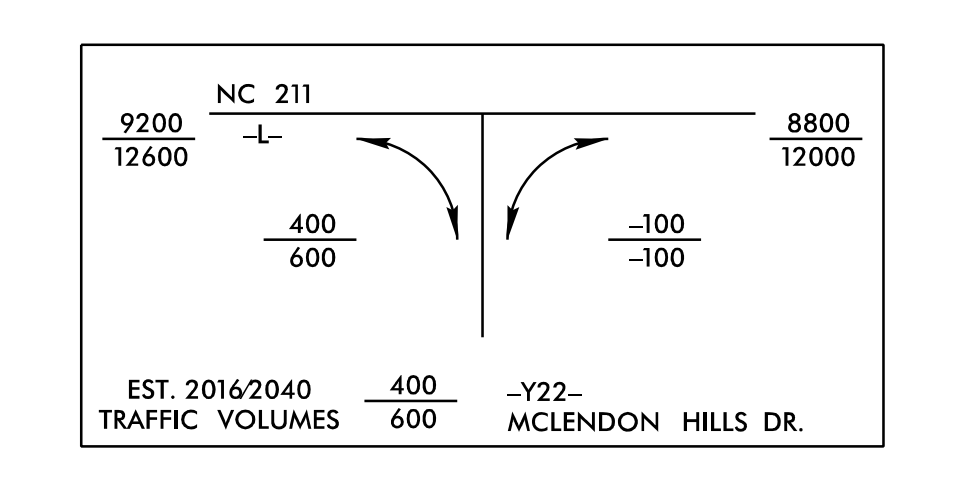
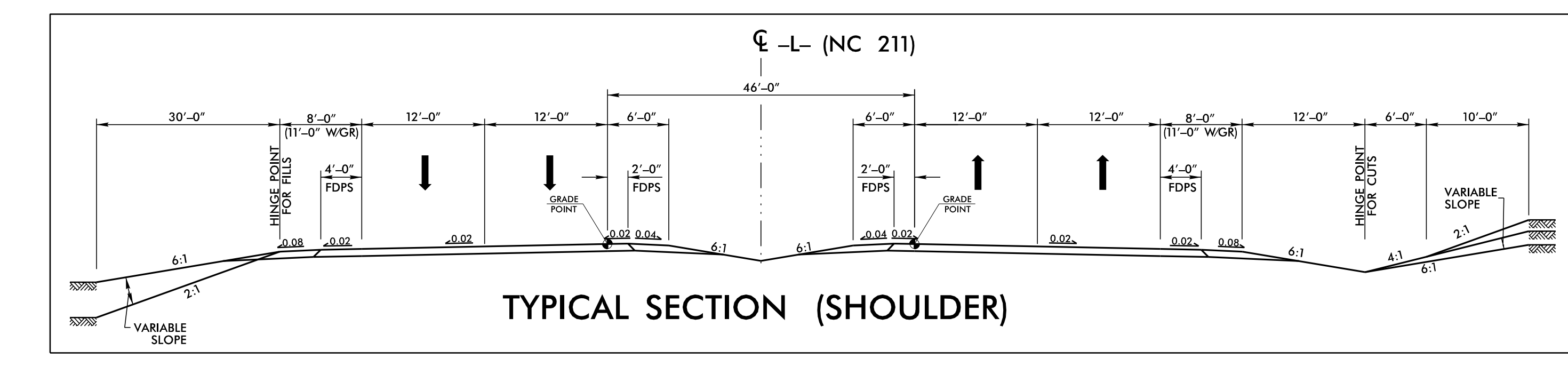


PUBLIC MEETING MAP
PROJECT 50218.1.1 (R-5726)
MOORE COUNTY
NC 211 FROM NC 73 IN WEST END TO SR 1241 (HOLLY GROVE SCHOOL RD)
AUGUST 2017 **ROLL 4 OF 5**

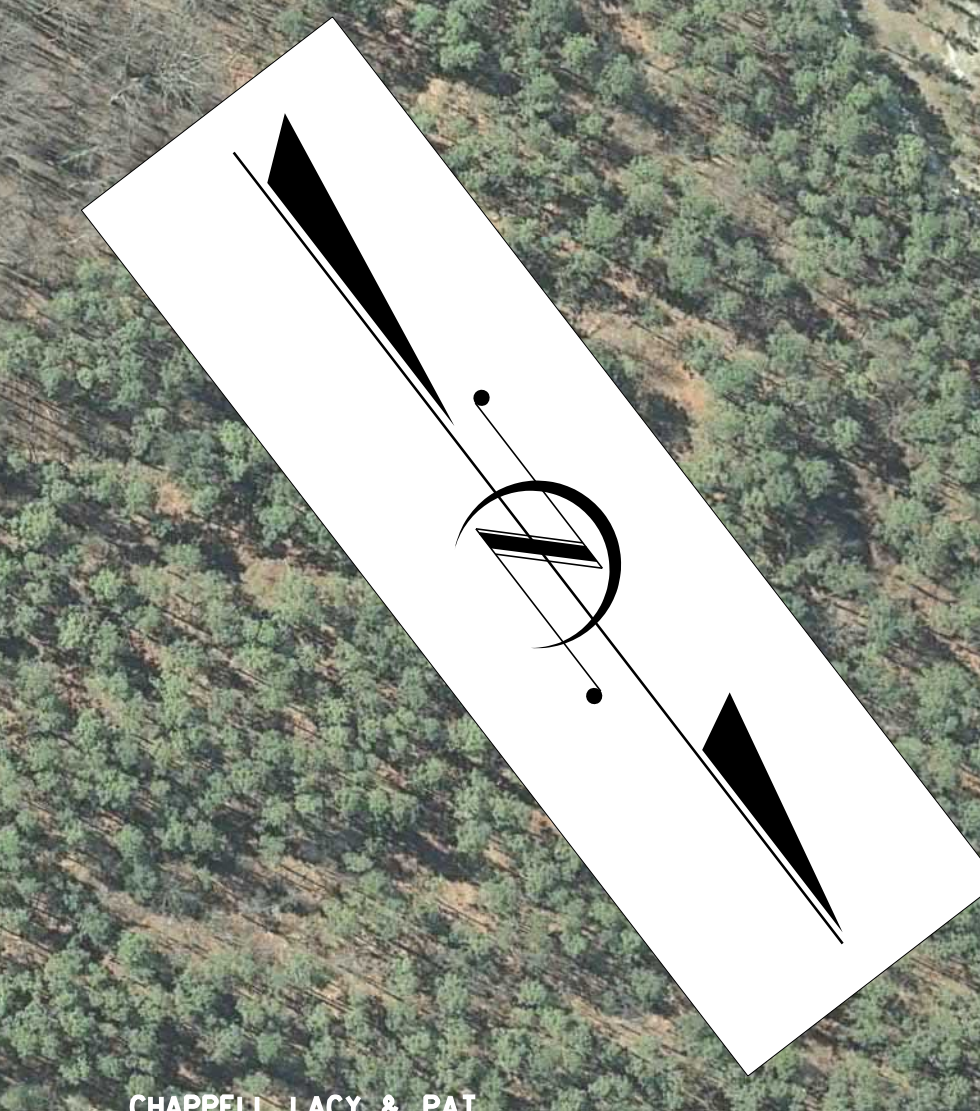


SEGMENT B
DESIGN DATA
 FUNCTIONAL CLASSIFICATION = URBAN MINOR ARTERIAL
 DESIGN SPEED = 50 MPH /60 MPH
 MAX SUPERELEV. = 0.04 /0.08



LEGEND

[Orange line]	BUILDINGS
[Green line]	EXISTING RIGHT OF WAY
[Red line]	PROPOSED RIGHT OF WAY
[Blue line]	PROPOSED EASEMENTS (DRAINAGE, CONSTRUCTION, AND UTILITY)
[Grey line]	EXISTING ROADWAY
[Red line]	EXISTING ROADWAY TO BE REMOVED
[Yellow line]	EXISTING ROADWAY TO BE RESURFACED
[Green line]	PROPOSED ROADWAY
[Red line]	PROPOSED STRUCTURES, ISLAND, CURB AND GUTTER
[Black line]	EXISTING STRUCTURES, ISLAND, CURB AND GUTTER
[Blue line]	LAKES, RIVER, STREAMS AND PONDS
[Purple line]	EXISTING UTILITY EASEMENT
[Pink line]	RAILROAD RIGHT OF WAY
[Black line]	CEMETERIES
[Dashed line]	HISTORIC PROPERTY BOUNDARY
[Thick black line]	PRESENT ADT
[Thin black line]	FUTURE ADT
[Red line]	PROPOSED TRAFFIC SIGNAL
[Green line]	WETLAND LIMITS BOUNDARY



GRAPHIC SCALE

100' 0' 100' 200'

50'

(GRAPHIC SCALE)

PRELIMINARY PLANS
 DO NOT USE FOR CONSTRUCTION
INCOMPLETE PLANS
 DO NOT USE FOR R/W ACQUISITION

-Y22B-	-Y23-	-L-	-L-
PI Sta 11+33.68	PI Sta 13+25.98	PI Sta 175+25.28	PI Sta 214+53.07
$\Delta = 22' 23'' 46.3''$ (RT)	$\Delta = 52' 14'' 09.7''$ (RT)	$\Delta = 16' 58'' 28.8''$ (RT)	$\Delta = 8' 17'' 59.0''$ (LT)
D = 144' 35' 29.6"	D = 69' 01' 51.8"	D = 156' 08.4"	D = 0' 52' 53.3"
L = 19.54'	L = 75.67'	L = 75.67'	L = 941.57'
T = 9.90'	T = 40.69'	T = 40.69'	T = 471.61'
R = 50.00'	R = 83.00'	R = 2360.00'	R = 6500.00'
		LS = 200.00'	LS = 120.00'
		LT = 133.34'	LT = 80.00'
		ST = 66.67'	ST = 40.00'
			ES = 0' 31' 44.0"
			ES = 0' 31' 44.0"
			ES = 0' 31' 44.0"
			ES = 0' 31' 44.0"