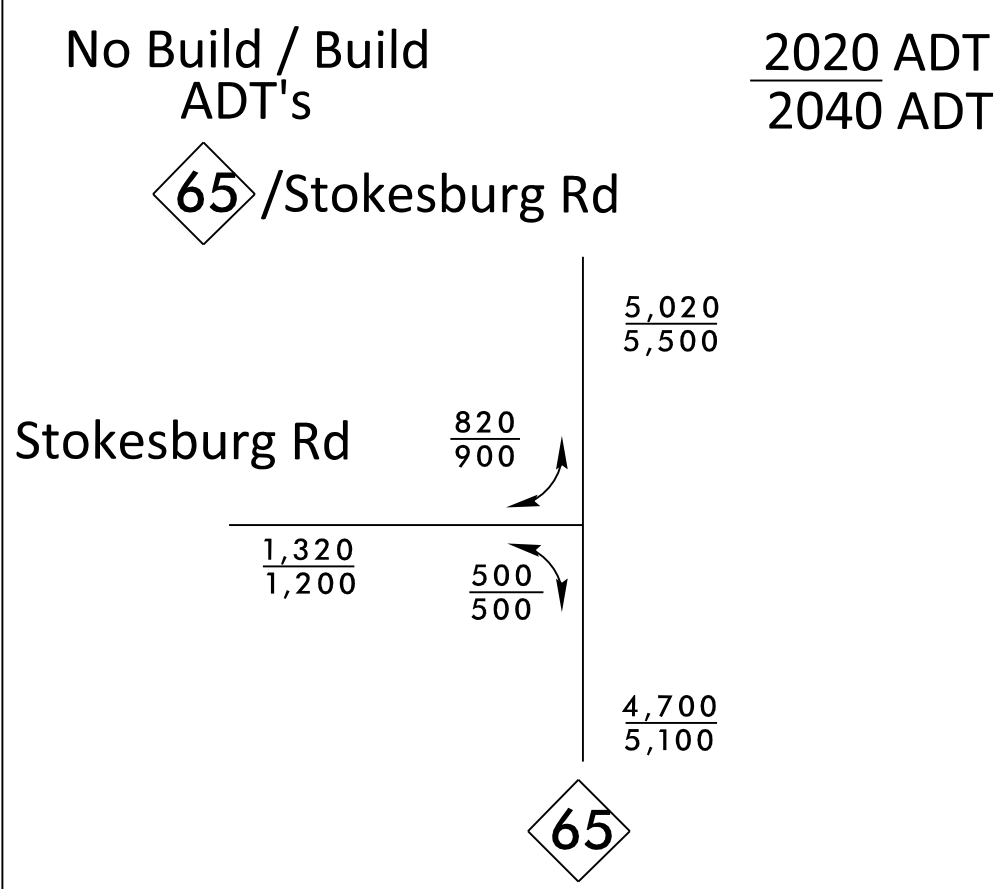
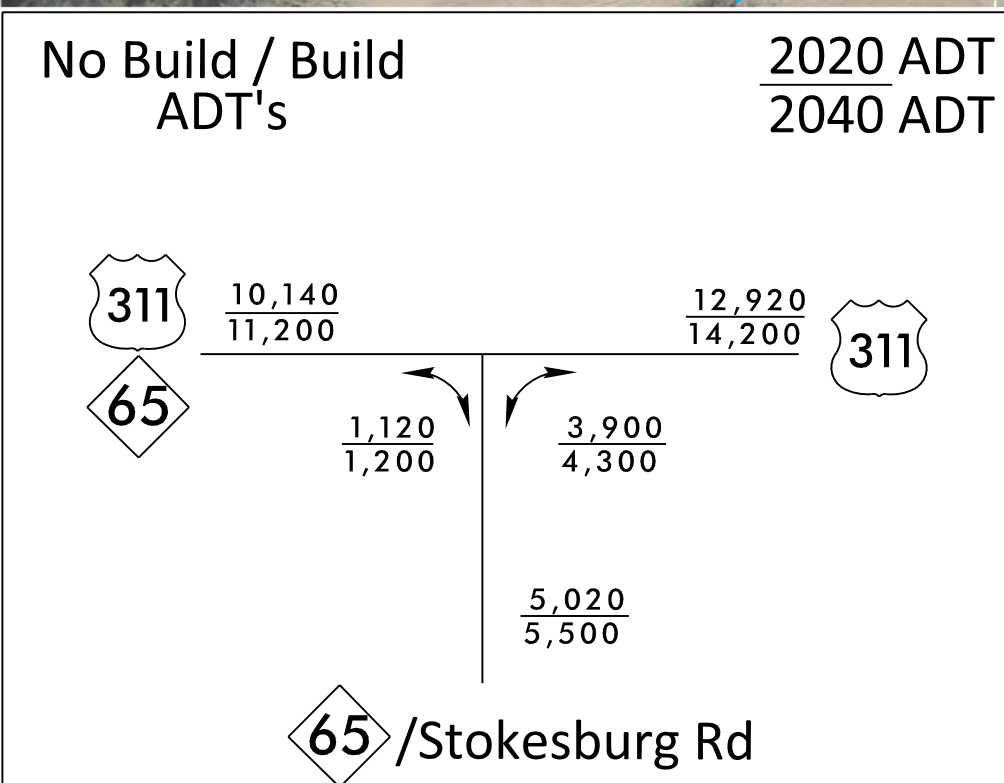
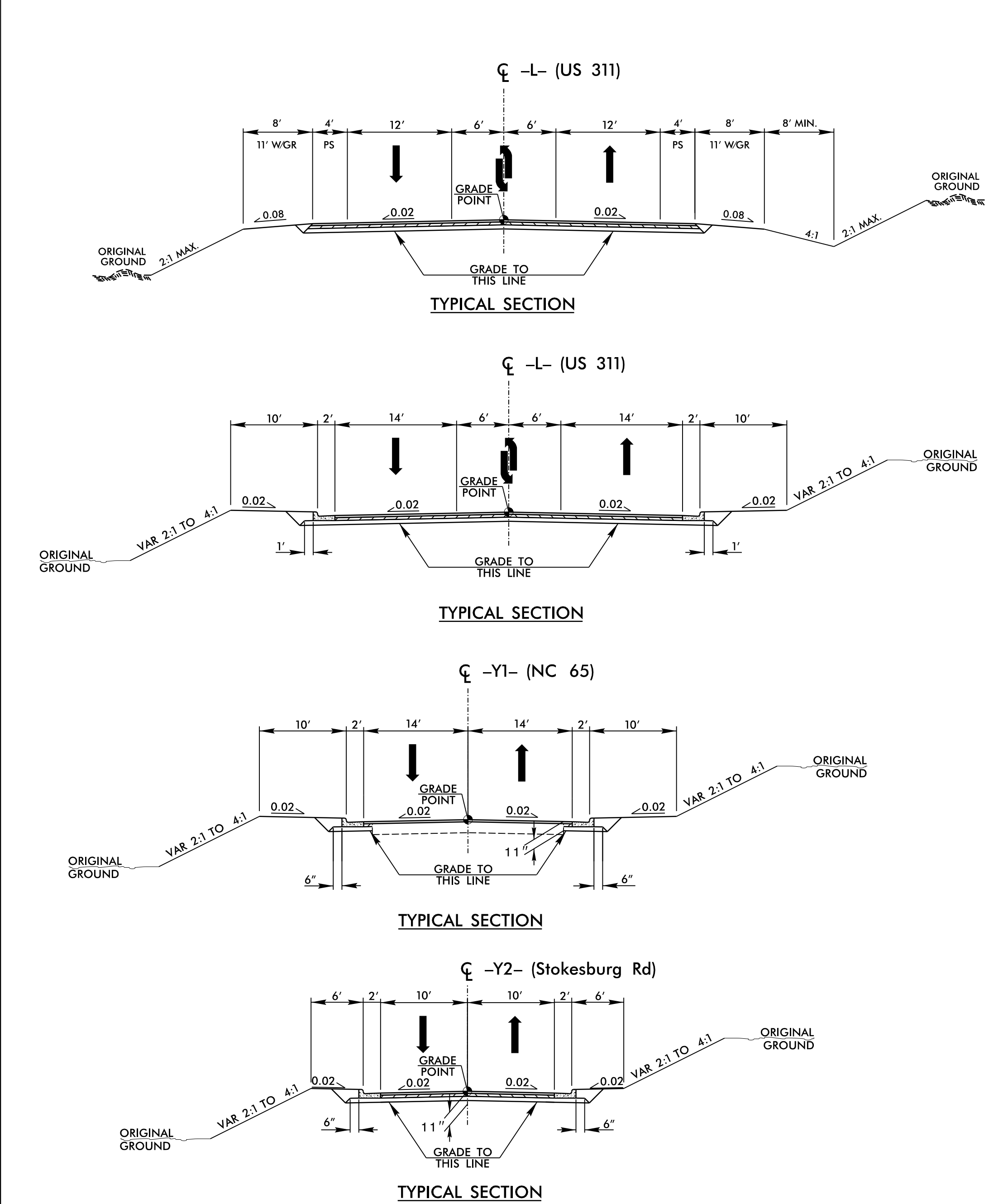


- ① HOLE BOYD DBA BOYD HOLE CONCRETE
- ② TOWN FORK PRODUCE, INC.
- ③ KNIGHT, JIMMY L. KNIGHT, DEBBIE R
- ④ SUTPHIN, DUANE
- ⑤ DEHART, V L
- ⑥ BOYDS KEVIN S.
- ⑦ GEORGE, PANDORA A. GEORGE, DUANE REI.
- ⑧ WILLIARD, HUNTER G. WILLIARD, CYNTHIA
- ⑨ WALKERTOWN LUBE-N-WASH LLC.
- ⑩ GROGAN, BARBARA JEAN
- ⑪ OLD STILL VENTURES, LLC.
- ⑫ OLD STILL VENTURES, LLC.
- ⑬ BLACK, JENNIFER
- ⑭ MEEKS, TERRY W. MEEKS, VICK
- ⑮ HAIRSTON, GLORIA
- ⑮ HAIRSTON, GLORIA
- ⑯ DEVINEY, LYNN SPAINHOUR
- ⑰ DALTON, JAMES B.
- ⑰ DALTON, JAMES B.
- ⑱ SLATE, ROGER
- ⑱ NORMAN, THOMAS & KAREN B.

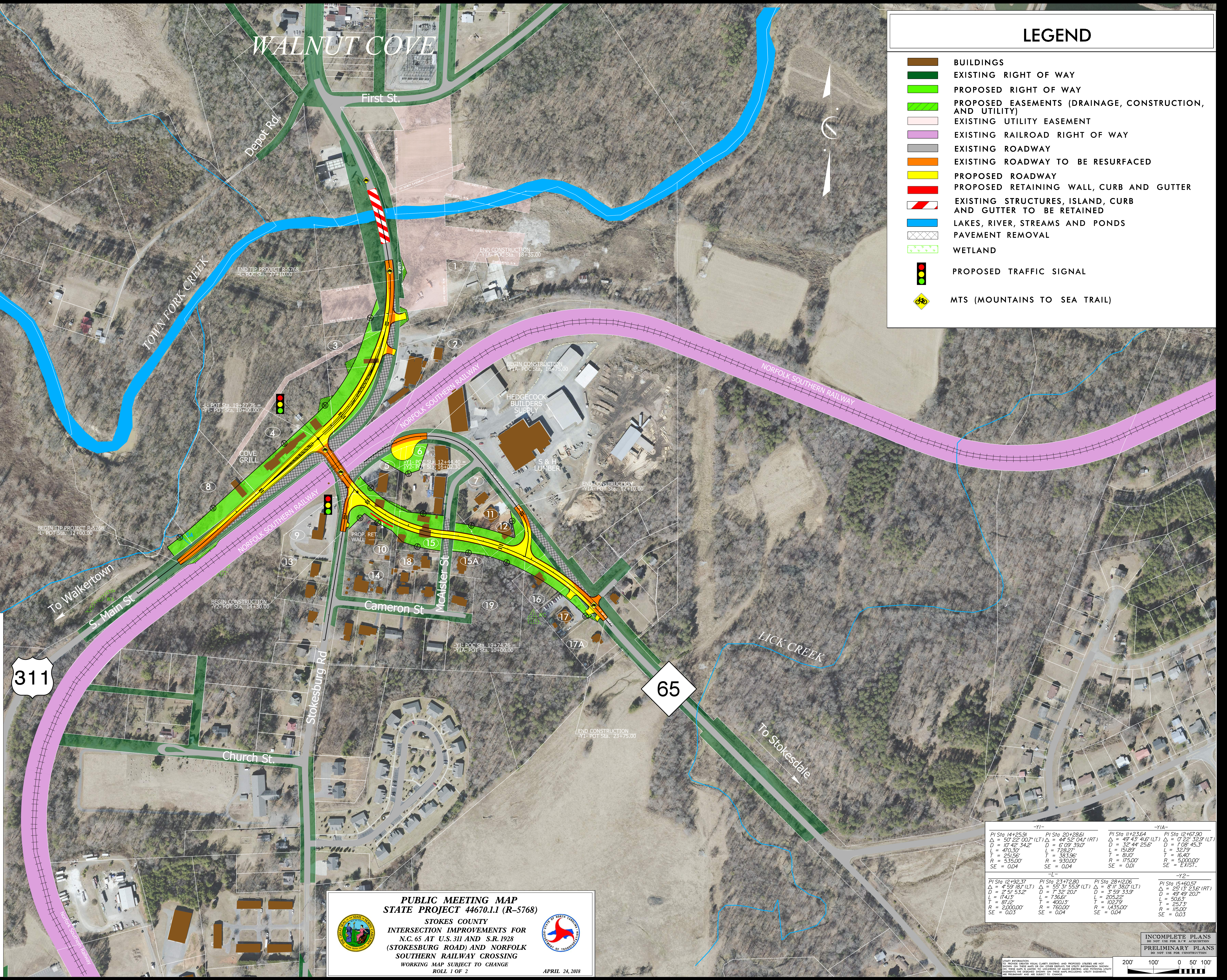


Design Speed = 40 mph
Maximum Super = 4%
Functional Classification Arterial



LEGEND

- BUILDINGS
- EXISTING RIGHT OF WAY
- PROPOSED RIGHT OF WAY
- PROPOSED EASEMENTS (DRAINAGE, CONSTRUCTION, AND UTILITY)
- EXISTING UTILITY EASEMENT
- EXISTING RAILROAD RIGHT OF WAY
- EXISTING ROADWAY
- EXISTING ROADWAY TO BE RESURFACED
- PROPOSED ROADWAY
- PROPOSED RETAINING WALL, CURB AND GUTTER
- EXISTING STRUCTURES, ISLAND, CURB AND GUTTER TO BE RETAINED
- LAKES, RIVER, STREAMS AND PONDS
- PAVEMENT REMOVAL
- WETLAND
- PROPOSED TRAFFIC SIGNAL
- MTS (MOUNTAINS TO SEA TRAIL)



PUBLIC MEETING MAP
STATE PROJECT 44670.1.1 (R-5768)
 STOKES COUNTY
INTERSECTION IMPROVEMENTS FOR
N.C. 65 AT U.S. 311 AND S.R. 1928
(STOKESBURG ROAD) AND NORFOLK
SOUTHERN RAILWAY CROSSING
 WORKING MAP SUBJECT TO CHANGE
 ROLL 1 OF 2

APRIL 24, 2018

-T1- PI Sta 14+25.91 $\Delta = 50' 22' 00''$ (LT) $\Delta = 44' 52' 04''$ (RT) $D = 10' 42' 34.2''$ $L = 670.30'$ $T = 251.56'$ $R = 5,350.00'$ $SE = 0.04$	-L- PI Sta 20+28.61 $\Delta = 55' 31' 55.9''$ (LT) $D = 7' 35' 24.7''$ $L = 736.6'$ $T = 420.73'$ $R = 760.00'$ $SE = 0.04$	-T2- PI Sta 11+23.64 $\Delta = 49' 43' 41.6''$ (LT) $\Delta = 38' 44' 25.6''$ (RT) $D = 1' 08' 45.3''$ $L = 322.79'$ $T = 16.40'$ $R = 5,200.00'$ $SE = EXIST.$	-T3- PI Sta 12+167.90 $\Delta = 49' 43' 41.6''$ (LT) $\Delta = 38' 44' 25.6''$ (RT) $D = 1' 08' 45.3''$ $L = 322.79'$ $T = 16.40'$ $R = 5,200.00'$ $SE = EXIST.$
-T4- PI Sta 12+192.37 $\Delta = 49' 43' 41.6''$ (LT) $\Delta = 38' 44' 25.6''$ (RT) $D = 1' 08' 45.3''$ $L = 322.79'$ $T = 16.40'$ $R = 5,200.00'$ $SE = EXIST.$	-L- PI Sta 23+72.80 $\Delta = 55' 31' 55.9''$ (LT) $D = 7' 35' 24.7''$ $L = 736.6'$ $T = 420.73'$ $R = 760.00'$ $SE = 0.04$	-T5- PI Sta 28+12.06 $\Delta = 8' 11' 38.0''$ (LT) $\Delta = 2' 59' 13.2''$ (RT) $D = 205.22'$ $L = 102.73'$ $T = 50.63'$ $R = 1,435.00'$ $SE = 0.04$	-T6- PI Sta 15+160.57 $\Delta = 25' 13' 23.6''$ (LT) $\Delta = 49' 49' 20.7''$ (RT) $D = 1' 08' 45.3''$ $L = 322.79'$ $T = 16.40'$ $R = 5,200.00'$ $SE = EXIST.$

INCOMPLETE PLANS
 DO NOT USE FOR CONSTRUCTION
 PRELIMINARY PLANS
 DO NOT USE FOR CONSTRUCTION