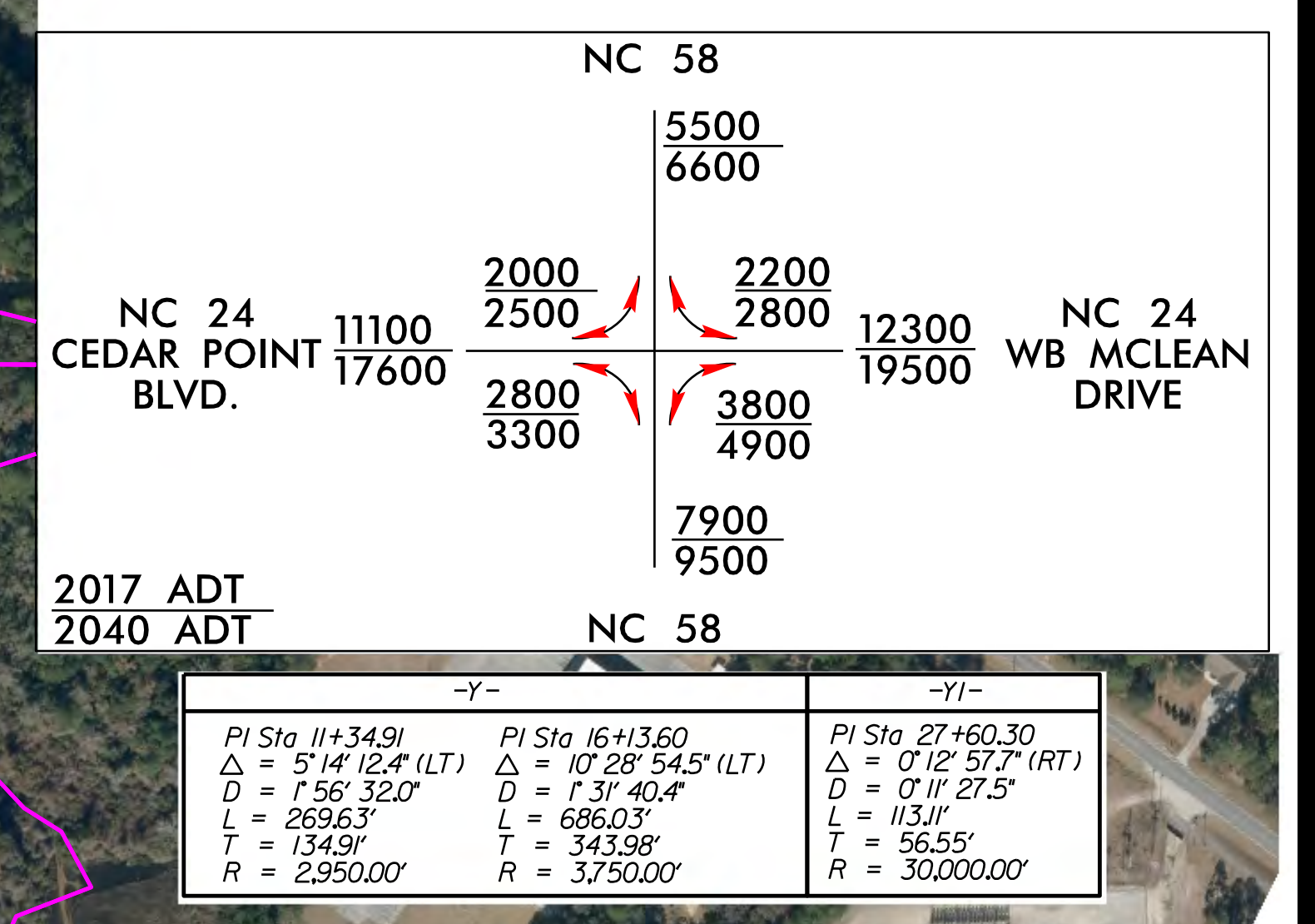






LEGEND

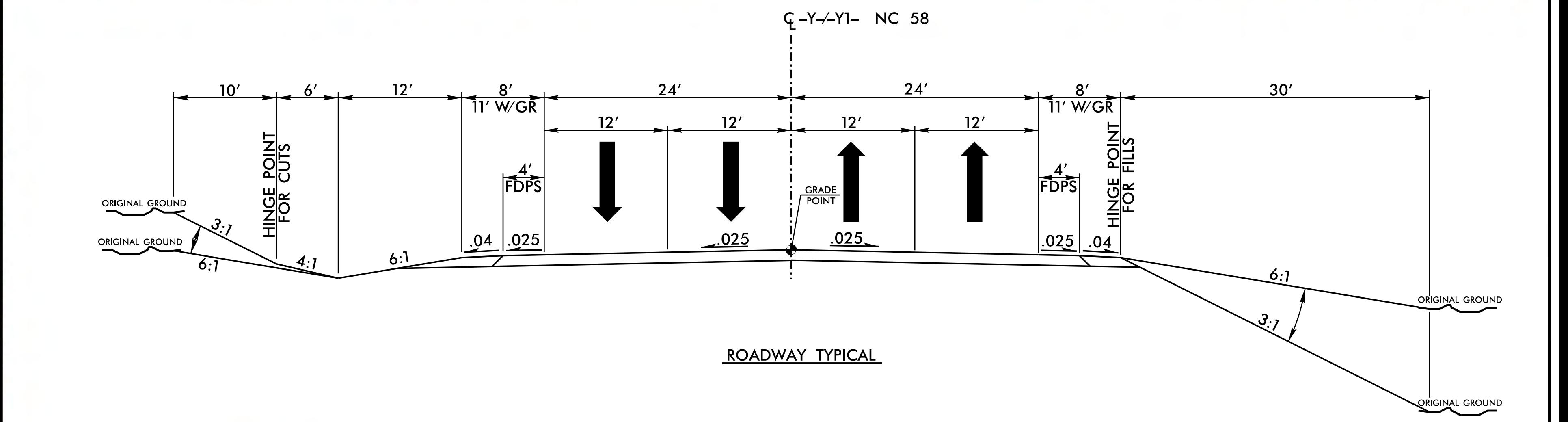
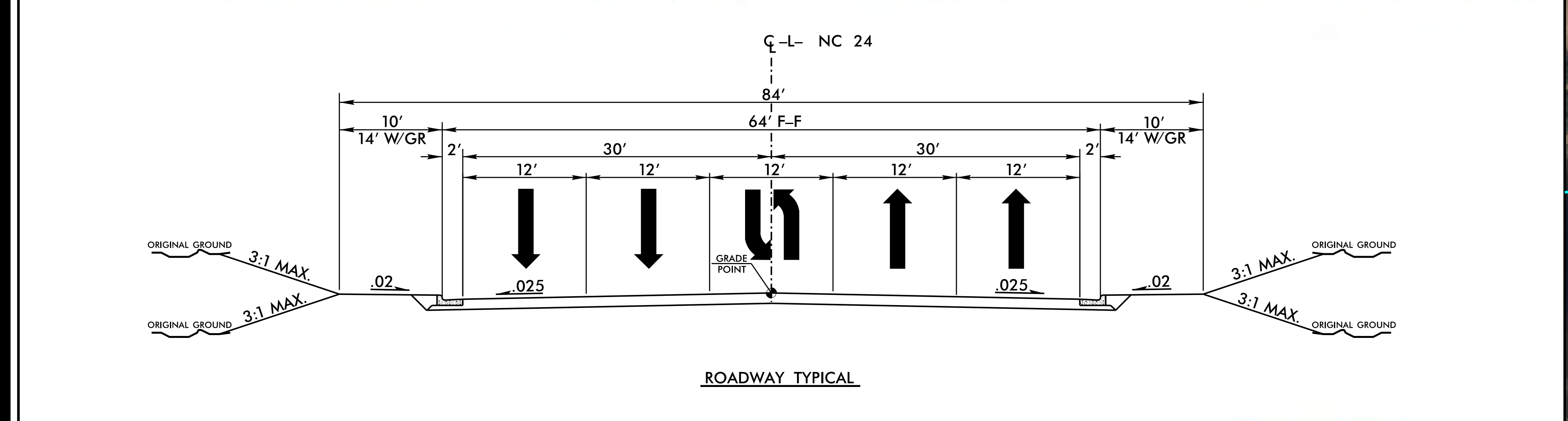
- CITY LIMIT BOUNDARY
- PROPERTY LINES (GIS)
- EXISTING TRAFFIC SIGNAL
- PROPOSED HORIZONTAL ALIGNMENT
- PROPOSED EDGE OF PAVEMENT
- PROPOSED CURB & GUTTER
- PROPOSED LIMITS OF CONSTRUCTION
- PROPOSED CONCRETE SIDEWALK
- PROPOSED RIGHT OF WAY
- PROPOSED TEMPORARY CONSTRUCTION EASEMENT



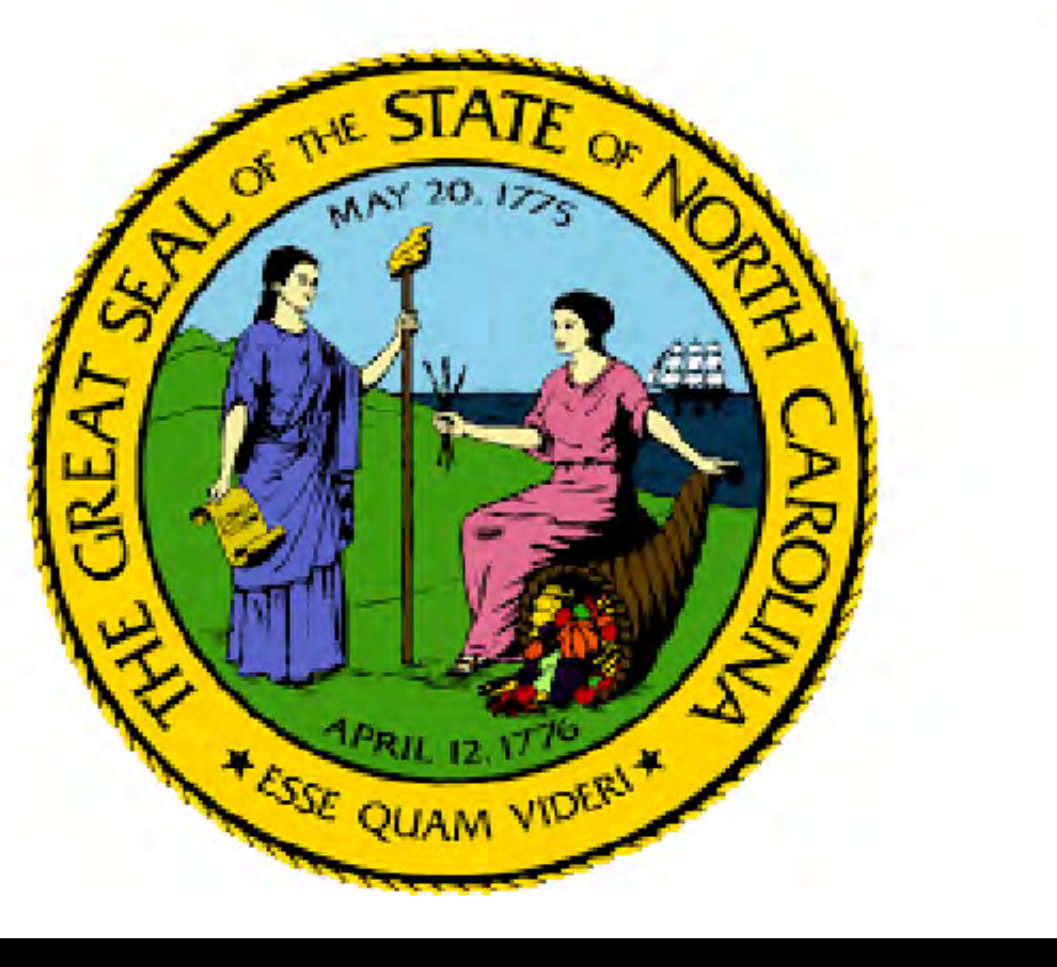
1. ARHC ECPTNO1 LLC
2. SOUND BANKING COMPANY
3. CAPE LOOKOUT PROPERTIES LLC
4. WAL-MART STORES EAST, LP
5. VACATION VILLAGE INC
6. BRANCH BANKING & TRUST COMPANY
7. REDCO PROPERTIES LLC
8. WAL-MART STORES EAST, LP
9. ENNETT, WILLIAM B
10. RBC BANK #2340
11. MCDONALDS REAL ESTATE COMPANY
12. COLE WG CAPE CARTERET INC LLC
13. MANATEE INVESTMENTS LMTD PTNSP
14. SCOTTASTIC LLC
15. TOWN OF CAPE CARTERET
16. CARTERET CROSSING LLC
17. DIAMOND 18 LLC
18. CIRCLE K STORES INC
19. MARINE FEDERAL CREDIT UNION
20. FIRST CITIZENS BANK & TRUST CO
21. MARINE FEDERAL CREDIT UNION
22. LOWE'S HOME CENTERS INC
23. CAPE CARTERET BAPTIST CHURCH
24. CAPE CARTERET PRESBYTERIAN CHURCH
25. SHACKELFORD, ETHEL LEDBETTER
26. MANATEE INVESTMENTS LMTD PTNSP
27. BUCK KEITH A ETAL ODOM
28. BLUEWATER INVESTORS INC
29. HARDEE'S RESTUARANTS LLC
30. MANATEE INVESTMENTS LMTD PTNSP
31. MANATEE INVESTMENTS LMTD PTNSP
32. FULCHER LURA M ETVIR EDWARD
33. MANATEE INVESTMENTS LMTD PTNSP
34. FULCHER LURA M ETVIR EDWARD
35. OSBORNE, G
36. NC DEPT OF TRANSPORTATION
37. MCLEAN HOLDING LMT PARTNERSHIP
38. JACOBSEN, PETER
39. SPEAR, CYNTHIA BROWN
40. WHITEFIELD, TONY E ETUX CHARLOTT
41. SPIVEY WILLIAM F ETUX EDIE S
42. ROUSE AMY C ETVIR CHRISTOPHER
43. LAMBERT W R TRUSTEE
44. HOLVERSON, DOLORES WITT
45. ALLEN, CHRISTINE M ETVIR
46. BROWN, GREGORY F ETUX ELIZABETH
47. UNDERHILL, ROBBIE NEIL
48. ELMORE, WESLEY I ETUX ALICE LEE
49. DEANS, BRENDA A


 INTERSECTION IMPROVEMENTS
 OF NC 24 (CEDAR POINTE BOULEVARD
 AND MCLEAN DRIVE) AT NC 58
 CARTERET COUNTY
 WBS # 47546.1.1
 NCDOT PROJECT # R-5858
 MAP 1 OF 1 NOVEMBER 7, 2017



 INTERSECTION IMPROVEMENTS
 OF NC 24 (CEDAR POINTE BOULEVARD
 AND MCLEAN DRIVE) AT NC 58
 CARTERET COUNTY
 WBS # 47546.1.1
 NCDOT PROJECT # R-5858
 MAP 1 OF 1 NOVEMBER 7, 2017




FUNCTIONAL CLASSIFICATION: PRINCIPAL ARTERIAL
 DESIGN SPEED: 50 MPH
 MAXIMUM SUPERELEVATION: 4%



INTERSECTION IMPROVEMENTS
OF NC 24 (CEDAR POINTE BOULEVARD
AND WB MCLEAN DRIVE) AT NC 58
CARTERET COUNTY
WBS # 47546.1.1
NCDOT PROJECT # R-5858
MAP 1 OF 1 NOVEMBER 7, 2017

