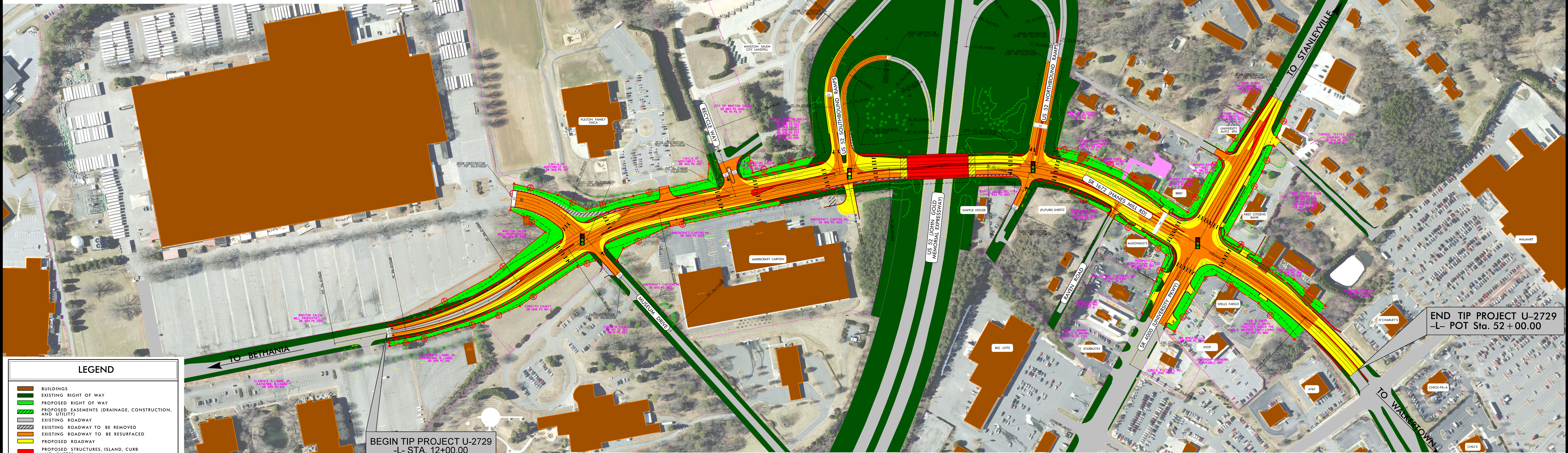
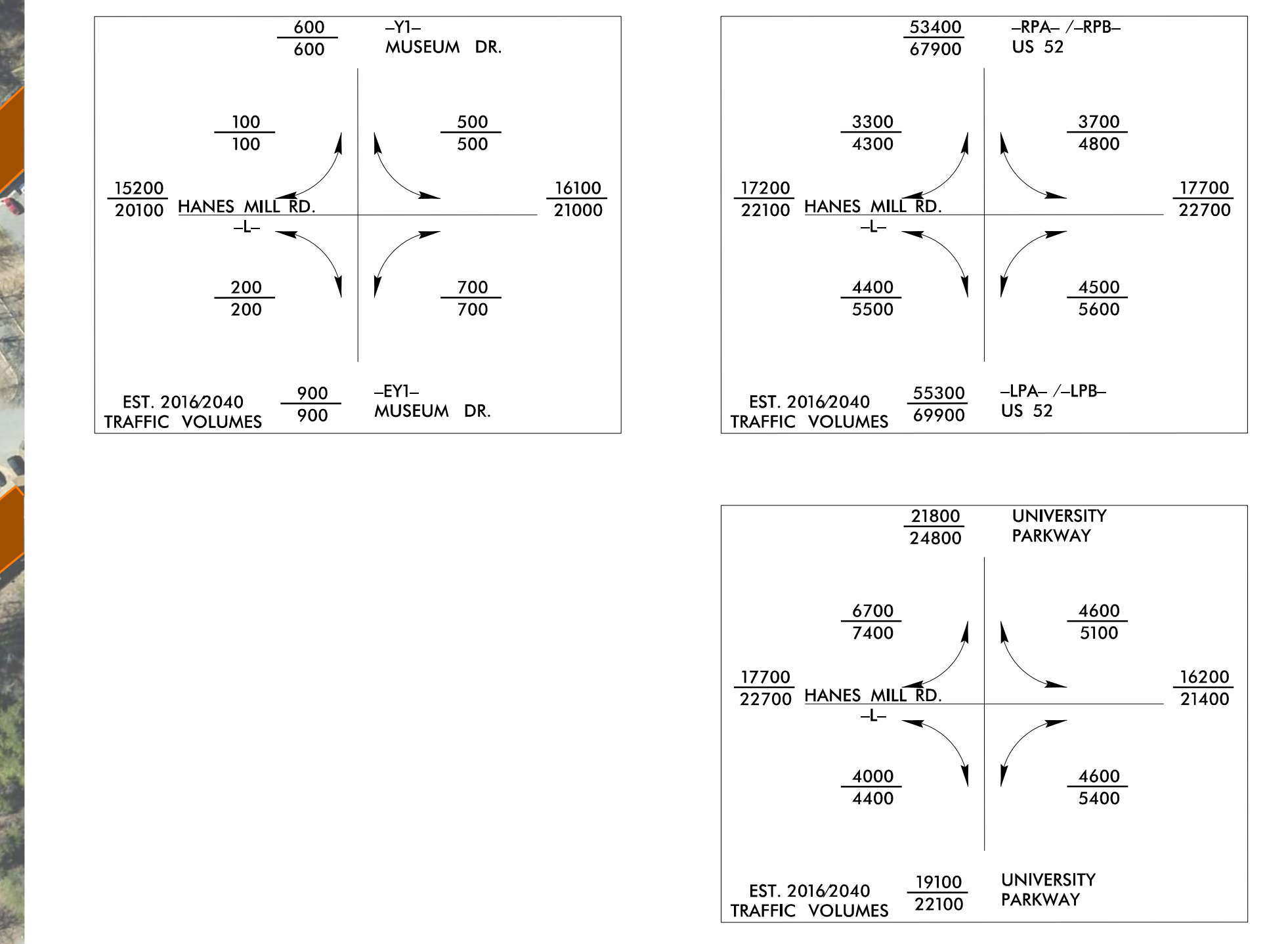


PUBLIC MEETING MAP
PROJECT U-2729
FORSYTH COUNTY
WIDENING OF HANES MILL ROAD (SR 1672)
ALTERNATE 1

FEBRUARY 2018 ROLL 1 OF 2

DESIGN DATA

FUNCTIONAL CLASSIFICATION = MAJOR COLLECTOR
DESIGN SPEED = 50 MPH
MAX SUPERELEV. = 0.04



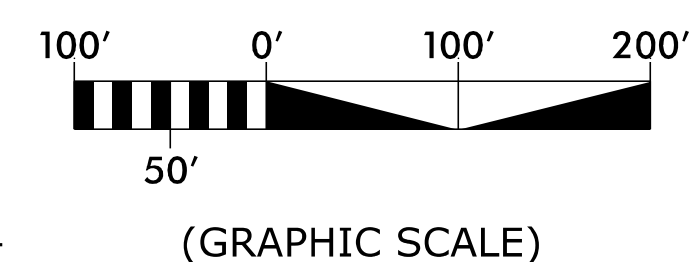
LEGEND

- BUILDINGS
- EXISTING RIGHT OF WAY
- PROPOSED RIGHT OF WAY
- PROPOSED EASEMENTS (DRAINAGE, CONSTRUCTION, AND UTILITY)
- EXISTING ROADWAY
- EXISTING ROADWAY TO BE REMOVED
- EXISTING ROADWAY TO BE RESURFACED
- PROPOSED ROADWAY
- PROPOSED STRUCTURES, ISLAND, CURB AND GUTTER
- EXISTING STRUCTURES, ISLAND, CURB AND GUTTER, TO BE RETAINED
- LAKES, RIVER, STREAMS AND PONDS
- EXISTING UTILITY EASEMENT
- RAILROAD RIGHT OF WAY
- CEMETERIES
- HISTORIC PROPERTY BOUNDARY
- PRESENT ADT
- FUTURE ADT
- EXISTING TRAFFIC SIGNAL
- PROPOSED TRAFFIC SIGNAL
- WETLAND LIMITS BOUNDARY

BEGIN TIP PROJECT U-2729
-L- STA. 12+00.00

END TIP PROJECT U-2729
-L- POT Sta. 52+00.00

$PI Sta 15+02.37$ $\Delta = 27.58' 11.1" (LT)$ $D = 4.47' 40.7"$ $L = 458.25'$ $T = 231.58'$ $R = 1495.00'$	$PI Sta 21+43.26$ $\Delta = 21.17' 09.8" (RT)$ $D = 5.47' 14.8"$ $L = 367.80'$ $T = 186.04'$ $R = 990.00'$	$PI Sta 31+24.15$ $\Delta = 10.04' 10.3" (RT)$ $D = 6.11' 14.8"$ $L = 162.74'$ $T = 81.59'$ $R = 926.00'$	$PI Sta 38+43.85$ $\Delta = 32.16' 24.7" (RT)$ $D = 6.11' 14.8"$ $L = 522.14'$ $T = 268.21'$ $R = 926.00'$	$PI Sta 47+59.72$ $\Delta = 17.21' 15.5" (RT)$ $D = 3.28' 20.3"$ $L = 326.98'$ $T = 164.03'$ $R = 1650.00'$	$PI Sta 50+96.03$ $\Delta = 9.54' 28.3" (RT)$ $D = 2.51' 53.2"$ $L = 200.08'$ $T = 102.74'$ $R = 357.00'$	$PI Sta 11+18.20$ $\Delta = 32.06' 40.0" (RT)$ $D = 16.02' 57.3"$ $L = 200.08'$ $T = 102.74'$ $R = 357.00'$	$PI Sta 12+84.47$ $\Delta = 7.53' 15.5" (RT)$ $D = 5.43' 46.5"$ $L = 137.67'$ $T = 68.04'$ $R = 1000.00'$	$PI Sta 14+75.22$ $\Delta = 2.34' 26.7" (RT)$ $D = 5.43' 46.5"$ $L = 44.05'$ $T = 22.33'$ $R = 1000.00'$	$PI Sta 19+01.55$ $\Delta = 50.41' 43.3" (LT)$ $D = 17.44' 19.7"$ $L = 285.79'$ $T = 153.01'$ $R = 323.00'$	$PI Sta 13+12.30$ $\Delta = 41.9' 26.3" (LT)$ $D = 22.25' 31.1" (RT)$ $L = 1096.3'$ $T = 571.2'$ $R = 152.00'$	$PI Sta 14+54.75$ $\Delta = 55.54' 37.0" (LT)$ $D = 37.4' 40.5"$ $L = 158.94'$ $T = 87.60'$ $R = 152.00'$	$PI Sta 15+85.81$ $\Delta = 42.03' 05.1" (LT)$ $D = 36.52' 45.5"$ $L = 140.02'$ $T = 53.72'$ $R = 155.56'$	$PI Sta 10+58.79$ $\Delta = 20.17' 15.3" (RT)$ $D = 17.28' 15.8"$ $L = 116.34'$ $T = 58.79'$ $R = 326.57'$	$PI Sta 11+65.70$ $\Delta = 30.40' 11.4" (RT)$ $D = 96.35'$ $L = 96.35'$ $T = 180.00'$	$PI Sta 13+93.02$ $\Delta = 10.14' 46.5" (RT)$ $D = 38.42' 48.0"$ $L = 261.53'$ $T = 148.00'$	$PI Sta 15+35.99$ $\Delta = 32.31' 07.2" (RT)$ $D = 17.13' 13.7"$ $L = 120.91'$ $T = 61.76'$ $R = 211.77'$	$PI Sta 20+17.64$ $Gs = 11.00' 00.0"$ $Ls = 200.00'$ $LT = 133.59'$ $ST = 66.90'$	$PI Sta 21+87.29$ $\Delta = 12.29' 31.0" (RT)$ $D = 11.00' 00.0"$ $L = 203.84'$ $T = 103.24'$ $R = 520.81'$	$PI Sta 10+45.89$ $\Delta = 12.29' 31.0" (RT)$ $D = 22.55' 05.5"$ $L = 54.51'$ $T = 27.37'$ $R = 250.00'$
--	---	--	---	--	--	--	--	---	--	---	--	---	---	--	---	---	---	--	--



PRELIMINARY PLANS
DO NOT USE FOR CONSTRUCTION
INCOMPLETE PLANS
DO NOT USE FOR R/W ACQUISITION