

LEGEND

- BUILDINGS
- EXISTING RIGHT OF WAY
- PROPOSED RIGHT OF WAY
- PROPOSED EASEMENTS (DRAINAGE, CONSTRUCTION, AND UTILITIES)
- EXISTING ROADWAY
- EXISTING ROADWAY TO BE REMOVED
- EXISTING ROADWAY TO BE RESURFACED
- PROPOSED ROADWAY
- PROPOSED STRUCTURES, ISLAND, CURB AND GUTTER
- EXISTING STRUCTURES, ISLAND, CURB AND GUTTER TO BE RETAINED
- EXISTING STRUCTURES, ISLAND, CURB AND GUTTER TO BE REMOVED
- RAILROAD RIGHT OF WAY
- EXISTING UTILITY EASEMENT
- CEMETERIES
- PROPOSED CONTROL OF ACCESS
- PROPERTY LINES
- HISTORIC PROPERTY BOUNDARY
- EXISTING TRAFFIC SIGNAL
- PROPOSED TRAFFIC SIGNAL

-L- PI Sta 12+63.14 Δ = 0°45'13.8" (RT) D = 0'08" 35.7" L = 526.27' T = 263.14' R = 40,000.00'	-Y1- PI Sta 19+02.25 Δ = 9°00'13.0" (RT) D = 1'11" 53.5" L = 750.40' T = 375.92' R = 4,775.25'	PI Sta 28+89.86 Δ = 11°51'24.9" (RT) D = 0'28" 13.4" L = 1221.99' T = 613.19' R = 5,905.00'
PI Sta 10+25.00 Δ = 2°05'00.5" (RT) D = 4'10" 01.7" L = 50.00' T = 25.00' R = 1,375.00'	-Y1- PI Sta 22+79.90 Δ = 14°55'42.4" (LT) D = 2'34" 30.3" L = 573.73' T = 291.51' R = 2,225.00'	PI Sta 28+96.81 Δ = 10°43'47.2" (LT) D = 1'38" 13.3" L = 635.44' T = 328.68' R = 3,500.00'

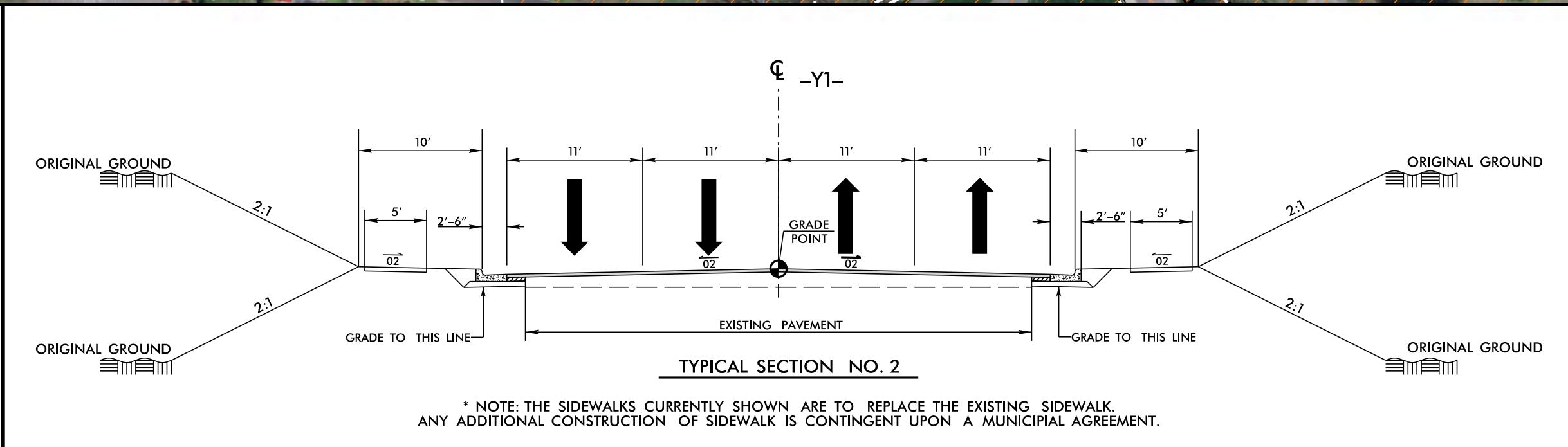
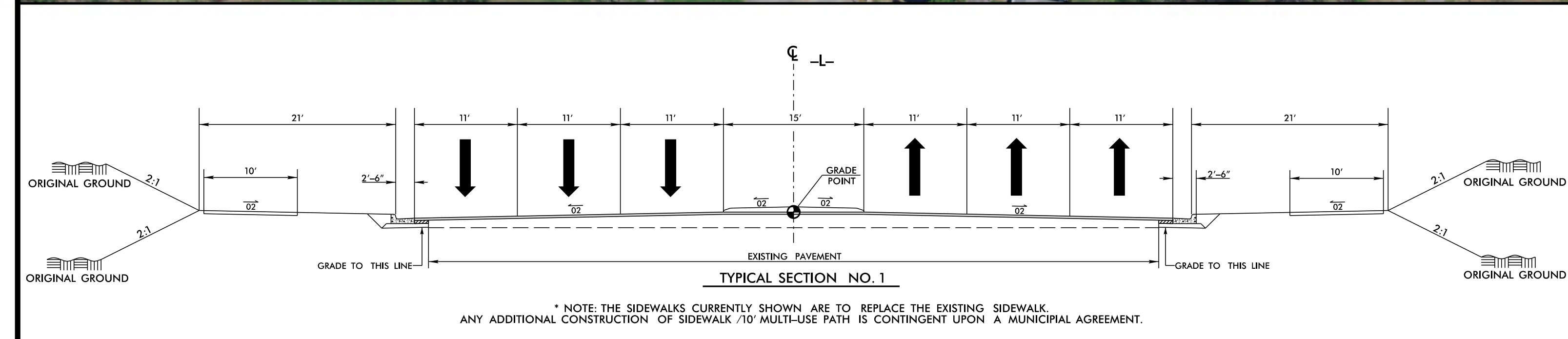
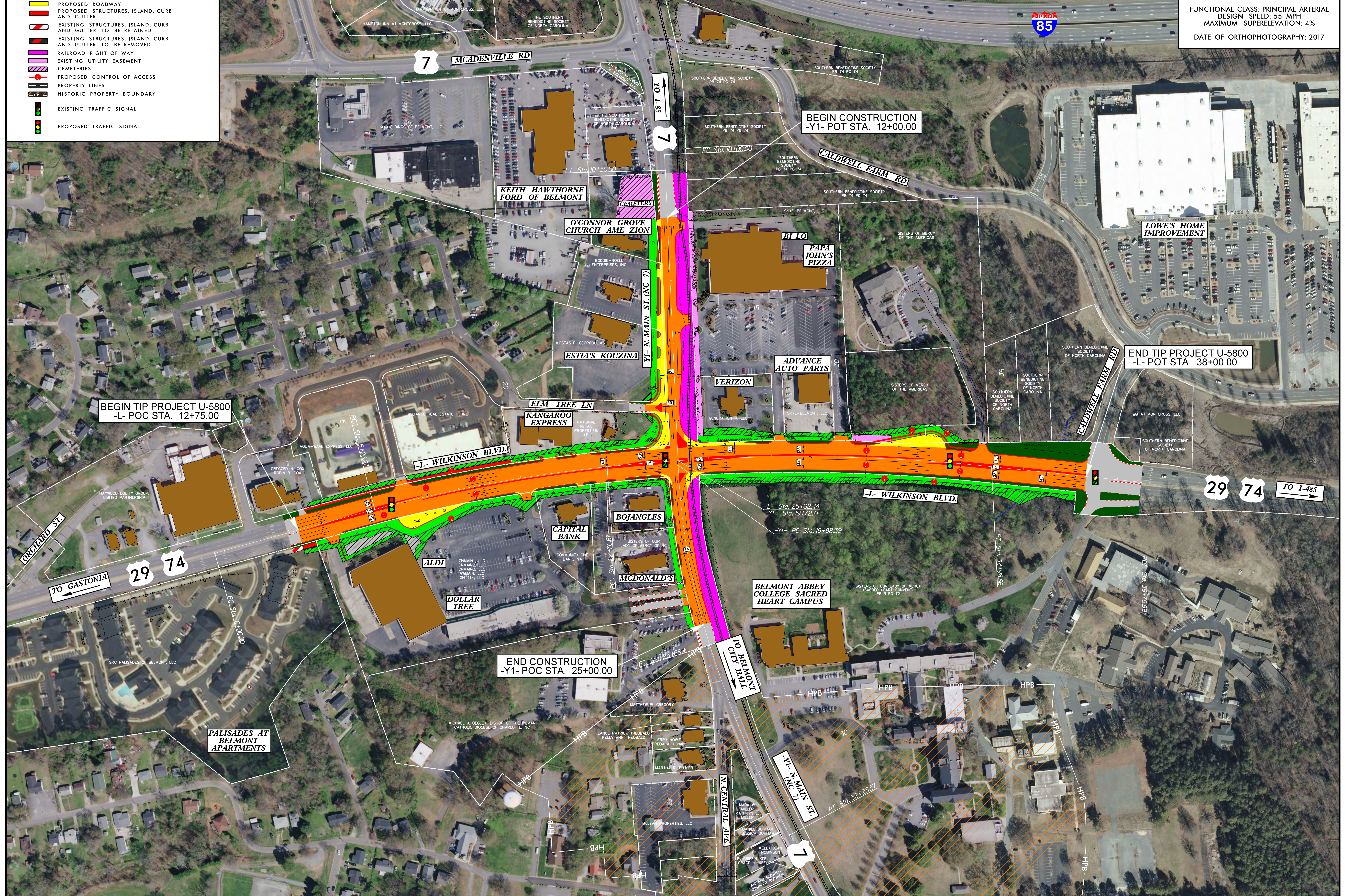
PUBLIC MEETING MAP
 PROJECT WBS 44372.1.1 (U-5800)
 NC 7 AND US 29/US 74 INTERSECTION IMPROVEMENTS
GASTON COUNTY



1" = 100'
 PRELIMINARY PLANS
 INCOMPLETE PLANS
 DO NOT USE FOR CONSTRUCTION
 DESIGN DATA
 FUNCTIONAL CLASS: PRINCIPAL ARTERIAL
 DESIGN SPEED: 55 MPH
 MAXIMUM SUPERELEVATION: 4%
 DATE OF ORTHOPHOTOGRAPHY: 2017

PUBLIC MEETING MAP
 PROJECT WBS 44372.1.1 (U-5800)
 NC 7 AND US 29/US 74 INTERSECTION IMPROVEMENTS
GASTON COUNTY

PUBLIC MEETING MAP
 PROJECT WBS 44372.1.1 (U-5800)
 NC 7 AND US 29/US 74 INTERSECTION IMPROVEMENTS
GASTON COUNTY



CONTROL OF ACCESS:
 UTILITIES ARE NOT SHOWN ON THESE MAPS OR ON OTHER DEPARTMENTS' DRAWINGS. UTILITY LOCATIONS WILL BE RECALLED AT A LATER DATE.
 DRIVEWAY NOTE:
 DRIVEWAYS ARE NOT SHOWN AS MAPS ARE BASED ON PRELIMINARY PLANS AND ARE SUBJECT TO CHANGE. DRIVEWAY LOCATIONS WILL BE RECALLED AT A LATER DATE.
 UTILITY INFORMATION:
 TO PROVIDE GREATER VISUAL CLARITY, EXISTING AND PROPOSED UTILITIES ARE NOT SHOWN ON THESE MAPS OR ON OTHER DEPARTMENTS' DRAWINGS. UTILITY LOCATIONS WILL BE RECALLED AT A LATER DATE.
 EASEMENTS ARE PRELIMINARY AND ARE SUBJECT TO CHANGE.

