

PRELIMINARY PLANS
DO NOT USE FOR CONSTRUCTION
INCOMPLETE PLANS
DO NOT USE FOR A.P. ACQUISITION

PUBLIC MEETING MAP

PROJECT U-5896

GUILFORD COUNTY

INTERCHANGE AT I-85 BUSINESS, US 29, US 70 AND S MAIN STREET (SR 1009)

ALTERNATIVE 2

JULY 2018

ROLL 2 OF 2

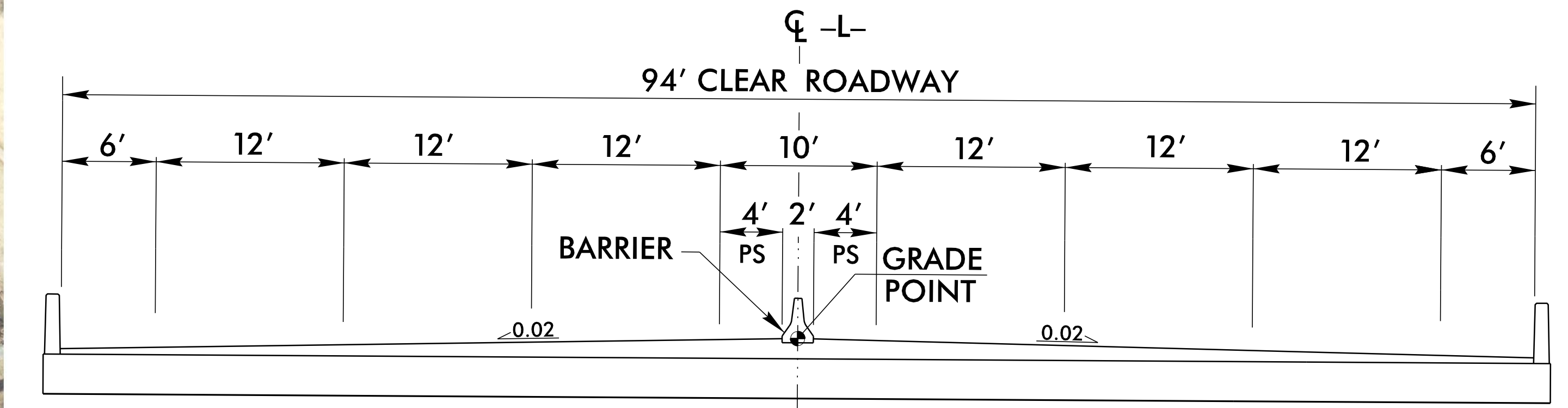
DESIGN DATA

FUNCTIONAL CLASSIFICATION = FREEWAY
DESIGN SPEED = 60 MPH
MAX. SUPERELEV. = 0.08

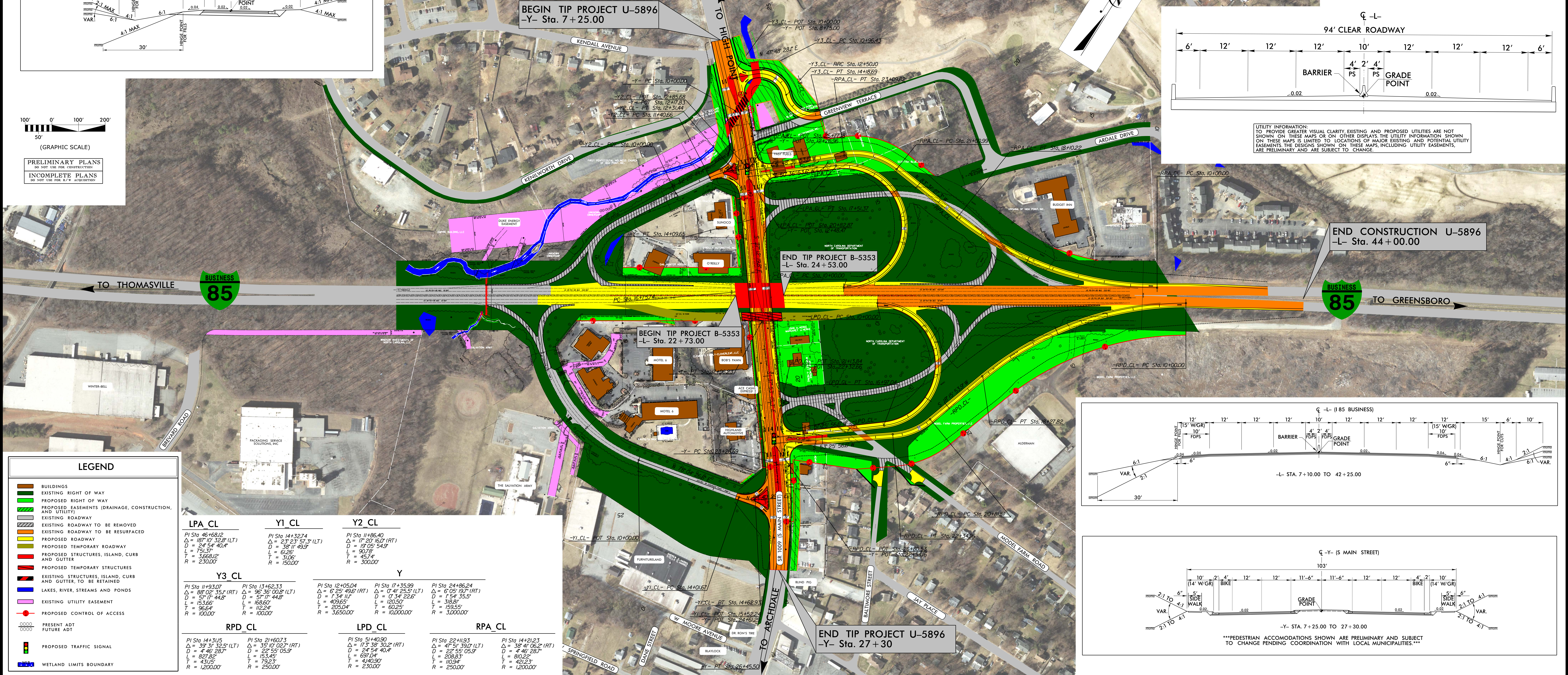
IMAGERY DATA

PHOTOGRAPH DATE = FEBRUARY 23, 2014
PHOTOGRAPH SOURCE = NC ONE MAP

TRAFFIC DIAGRAM		29250	ADT 2020
		31700	ADT 2040
	S. MAIN ST.	3990	4850
		4800	6300
US 29-70 I-85 BUS.			-L-
		34190	38070
		38000	42700
		1670	4690
		2300	5500
			26770
			28400



UTILITY INFORMATION:
TO PROVIDE GREATER VISUAL CLARITY, EXISTING AND PROPOSED UTILITIES ARE NOT SHOWN ON THESE MAPS OR ON OTHER DISPLAYS. THE UTILITY INFORMATION SHOWN ON THESE MAPS IS LIMITED TO LOCATIONS OF MAJOR EXISTING AND POTENTIAL UTILITY EASEMENTS. THE DESIGNS SHOWN ON THESE MAPS, INCLUDING UTILITY EASEMENTS, ARE PRELIMINARY AND ARE SUBJECT TO CHANGE.



BEGIN TIP PROJECT U-5896
-Y- Sta. 7 + 25.00

END TIP PROJECT B-5353
-L- Sta. 24 + 53.00

END CONSTRUCTION U-5896
-L- Sta. 44 + 00.00

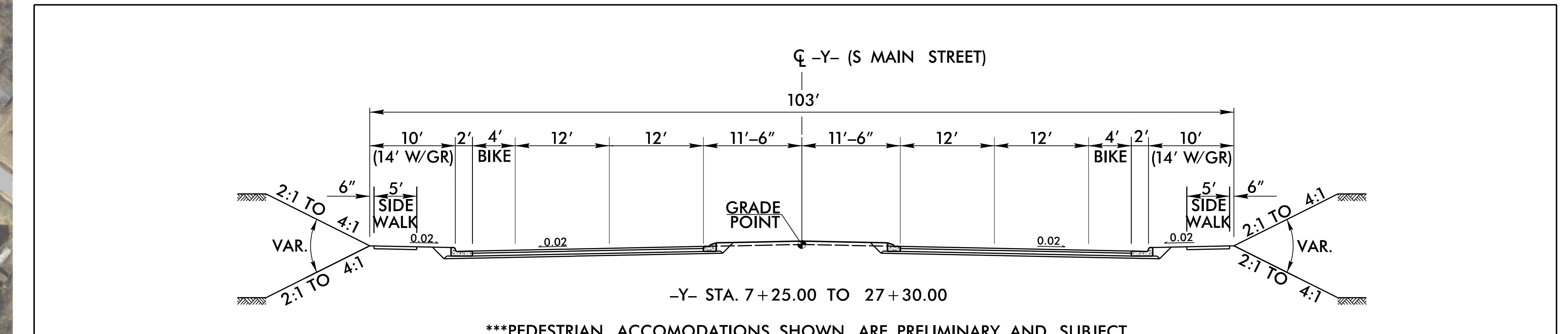
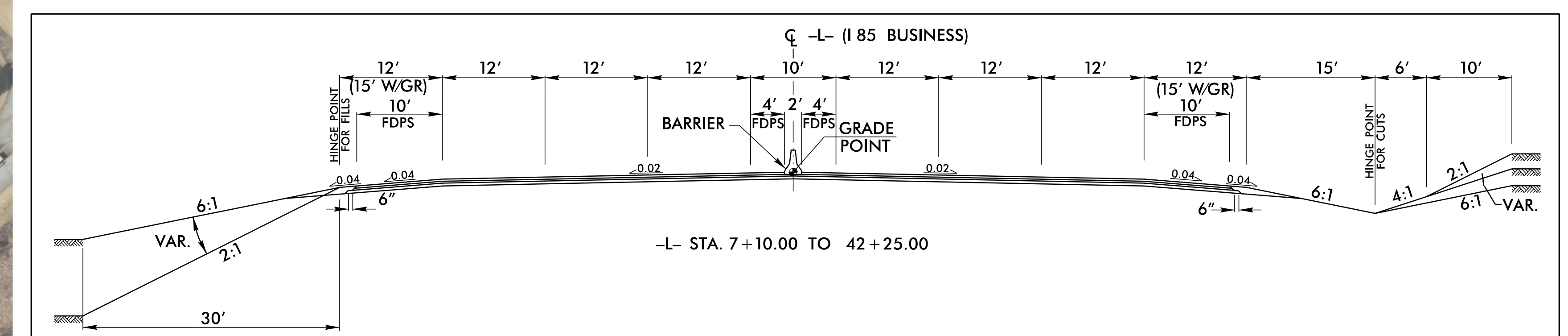
BEGIN TIP PROJECT B-5353
-L- Sta. 22 + 73.00

END TIP PROJECT U-5896
-Y- Sta. 27 + 30

LEGEND

- BUILDINGS
- EXISTING RIGHT OF WAY
- PROPOSED RIGHT OF WAY
- PROPOSED EASEMENTS (DRAINAGE, CONSTRUCTION, AND UTILITY)
- EXISTING ROADWAY
- EXISTING ROADWAY TO BE REMOVED
- EXISTING ROADWAY TO BE RESURFACED
- PROPOSED ROADWAY
- PROPOSED TEMPORARY ROADWAY
- PROPOSED STRUCTURES, ISLAND, CURB AND GUTTER
- PROPOSED TEMPORARY STRUCTURES
- EXISTING STRUCTURES, ISLAND, CURB AND GUTTER, TO BE RETAINED
- LAKES, RIVER, STREAMS AND PONDS
- EXISTING UTILITY EASEMENT
- PROPOSED CONTROL OF ACCESS
- PRESENT ADT
- FUTURE ADT
- PROPOSED TRAFFIC SIGNAL
- WETLAND LIMITS BOUNDARY

LPA_CL	Y1_CL	Y2_CL	Y3_CL	Y	RPD_CL	LPD_CL	RPA_CL
PI Sta 46+68.12 Δ = 187' 10" 32.8" (LT) D = 57' 17" 44.8" L = 751.57' T = 3,668.12' R = 230.00'	PI Sta 14+32.74 Δ = 23' 23" 57.3" (LT) D = 38' 11" 49.9" L = 61.26' T = 310.8' R = 150.00'	PI Sta 11+86.40 Δ = 17' 20" 60.2" (RT) D = 19' 05" 54.9" L = 90.78' T = 45.74' R = 300.00'	PI Sta 11+93.07 Δ = 88' 02" 35.1" (RT) D = 57' 17" 44.8" L = 153.66' T = 96.54' R = 100.00'	PI Sta 12+05.04 Δ = 6' 25" 49.6" (RT) D = 1' 34" 22.6" L = 409.65' T = 205.04' R = 3,650.00'	PI Sta 17+35.99 Δ = 0' 41" 25.5" (LT) D = 1' 34" 22.6" L = 120.50' T = 60.25' R = 10,000.00'	PI Sta 24+86.24 Δ = 6' 05" 19.7" (RT) D = 1' 54" 35.5" L = 318.81' T = 159.55' R = 3,000.00'	PI Sta 14+32.74 Δ = 23' 23" 57.3" (LT) D = 38' 11" 49.9" L = 61.26' T = 310.8' R = 150.00'
PI Sta 14+31.05 Δ = 39' 31" 32.5" (LT) D = 4' 46" 28.7" L = 827.82' T = 431.5' R = 120.00'	PI Sta 21+60.73 Δ = 35' 10" 02.7" (RT) D = 22' 55" 05.9" L = 153.45' T = 79.23' R = 250.00'	PI Sta 51+40.90 Δ = 17' 38" 30.2" (RT) D = 24' 54" 40.4" L = 697.04' T = 4,40.90' R = 230.00'	PI Sta 22+19.3 Δ = 47' 51" 39.0" (LT) D = 22' 55" 05.9" L = 208.83' T = 110.94' R = 250.00'	PI Sta 14+21.23 Δ = 38' 41" 06.2" (RT) D = 4' 46" 28.7" L = 810.23' T = 421.23' R = 120.00'			



PEDESTRIAN ACCOMMODATIONS SHOWN ARE PRELIMINARY AND SUBJECT TO CHANGE PENDING COORDINATION WITH LOCAL MUNICIPALITIES.