

IMPACTS AND DRIVEWAY TIES

LIMITS OF CONSTRUCTION AND THEIR IMPACTS SHOWN ON THIS HEARING MAP ARE BASED OFF OF PRELIMINARY DESIGNS AND PRELIMINARY GROUND SURVEYS. DURING THE FINAL DESIGN STAGE, DESIGNERS WILL ATTEMPT TO MINIMIZE IMPACTS WHERE FEASIBLE USING FINAL GROUND SURVEYS. FINAL DRIVEWAY LOCATIONS WILL ALSO BE DETERMINED DURING FINAL DESIGN USING FINAL SURVEYS.

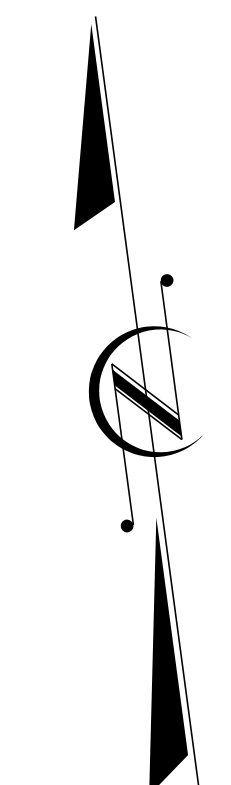
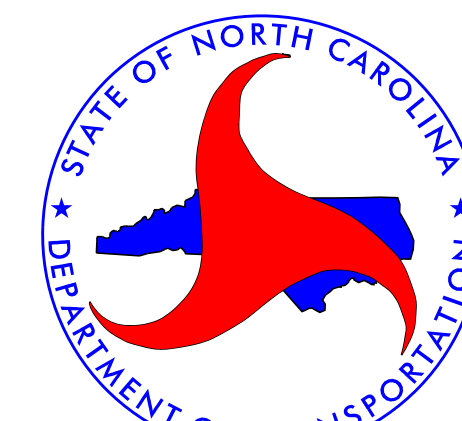
CONTROL OF ACCESS

"FULL CONTROL OF ACCESS IS DEFINED AS A CONNECTION TO A FACILITY PROVIDED ONLY VIA RAMPS AT INTERCHANGES. ALL CROSS STREETS ARE GRADE-SEPARATED. NO PRIVATE DRIVEWAYS ALLOWED."

**DESIGN PUBLIC MEETING MAP
TIP PROJECT NO. U-6039
IREDELL COUNTY**

**EAST BROAD STREET IMPROVEMENTS
IN STATESVILLE**

JANUARY 2018



2017 ADT 2040 ADT		2017 ADT 2040 ADT		2017 ADT 2040 ADT		2017 ADT 2040 ADT	
E BROAD ST. 18400 21800		E BROAD ST. 19000 22500		E BROAD ST. 19000 22500		SIGNAL HILL DR. 8600 10200	
E BROAD ST. K = 17% DIR = 62% TTST = 2% DUAL = 1%		E BROAD ST. K = 19% DIR = 61% TTST = 2% DUAL = 1%		E BROAD ST. K = 9% DIR = 51% TTST = 2% DUAL = 1%		SIGNAL HILL DR. K = 11% DIR = 52% TTST = 2% DUAL = 1%	

2017 ADT 2040 ADT		2017 ADT 2040 ADT		2017 ADT 2040 ADT		2017 ADT 2040 ADT	
E BROAD ST. 18400 21800		E BROAD ST. 19000 22500		E BROAD ST. 19000 22500		SIGNAL HILL DR. 8600 10200	
E BROAD ST. K = 17% DIR = 62% TTST = 2% DUAL = 1%		E BROAD ST. K = 19% DIR = 61% TTST = 2% DUAL = 1%		E BROAD ST. K = 9% DIR = 51% TTST = 2% DUAL = 1%		SIGNAL HILL DR. K = 11% DIR = 52% TTST = 2% DUAL = 1%	

MAP PREPARED: JANUARY 2018

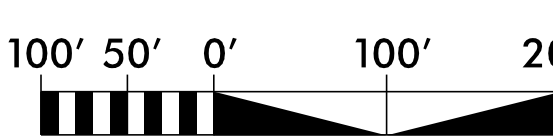
DESIGN DATA

-L- SR 2321
EAST BROAD STREET
FUNCTIONAL CLASS = MINOR ARTERIAL
DESIGN SPEED = 40 MPH
MAX SUPERELEVATION = NORMAL CROWN

-Y1- SR 2333
EASTSIDE DRIVE
FUNCTIONAL CLASS = MAJOR COLLECTOR
DESIGN SPEED = 35 MPH
MAX SUPERELEVATION = 0.04

-Y2- SR 2422
SIGNAL HILL DRIVE
FUNCTIONAL CLASS = LOCAL
DESIGN SPEED = 40 MPH
MAX SUPERELEVATION = NORMAL CROWN

-Y3- CAROLINA STREET
FUNCTIONAL CLASS = LOCAL
DESIGN SPEED = 30 MPH
MAX SUPERELEVATION = NORMAL CROWN

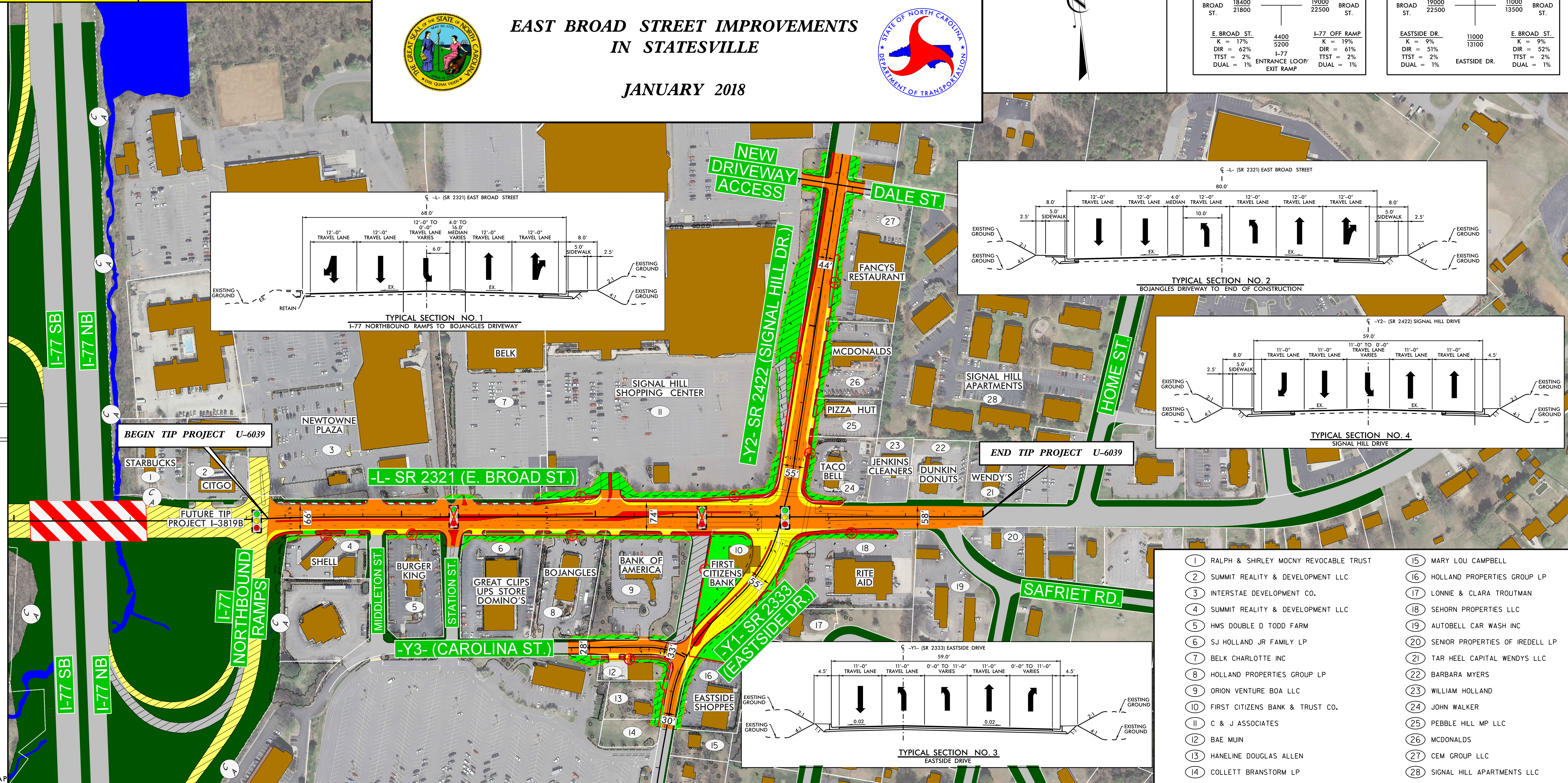


(ENGLISH)

PRELIMINARY PLANS
DO NOT USE FOR CONSTRUCTION

LEGEND

- BUILDINGS
- EXISTING RIGHT OF WAY
- EXISTING STREAM/POND
- ALL EASEMENTS
- PROPOSED RIGHT OF WAY
- EXISTING ROADWAY
- EXISTING ROADWAY TO BE REMOVED
- EXISTING ROADWAY TO BE RESURFACED
- PROPOSED ROADWAY
- FUTURE TIP PROJECT
- PROPOSED STRUCTURES, ISLAND, CURB AND GUTTER, AND SIDEWALK
- EXISTING STRUCTURES TO BE RETAINED
- EXISTING CONTROL OF ACCESS
- RIGHT OF WAY
- PROPERTY LINES
- EXISTING TRAFFIC SIGNAL
- EXISTING TRAFFIC SIGNAL TO BE REMOVED
- UTILITIES NOT DEPICTED ON PUBLIC MEETING MAP



- | | |
|---|------------------------------------|
| 1 RALPH & SHIRLEY MOCNY REVOCABLE TRUST | 15 MARY LOU CAMPBELL |
| 2 SUMMIT REALTY & DEVELOPMENT LLC | 16 HOLLAND PROPERTIES GROUP LP |
| 3 INTERSTAE DEVELOPMENT CO. | 17 LONNIE & CLARA TROUTMAN |
| 4 SUMMIT REALTY & DEVELOPMENT LLC | 18 SEHORN PROPERTIES LLC |
| 5 HMS DOUBLE D TODD FARM | 19 AUTOBELL CAR WASH INC |
| 6 SJ HOLLAND JR FAMILY LP | 20 SENIOR PROPERTIES OF IREDELL LP |
| 7 BELK CHARLOTTE INC | 21 TAR HEEL CAPITAL WENDYS LLC |
| 8 HOLLAND PROPERTIES GROUP LP | 22 BARBARA MYERS |
| 9 ORION VENTURE BOA LLC | 23 WILLIAM HOLLAND |
| 10 FIRST CITIZENS BANK & TRUST CO. | 24 JOHN WALKER |
| 11 C & J ASSOCIATES | 25 PEBBLE HILL MP LLC |
| 12 BAE MUN | 26 MCDONALDS |
| 13 HANELINE DOUGLAS ALLEN | 27 CEM GROUP LLC |
| 14 COLLETT BRANSTORM LP | 28 SIGNAL HILL APARTMENTS LLC |

DESIGN PUBLIC MEETING MAP
TIP PROJECT NO. U-6039
IREDELL COUNTY
EAST BROAD STREET IMPROVEMENTS
IN STATESVILLE
JANUARY 2018

DESIGN PUBLIC MEETING MAP
TIP PROJECT NO. U-6039
IREDELL COUNTY
EAST BROAD STREET IMPROVEMENTS
IN STATESVILLE
JANUARY 2018