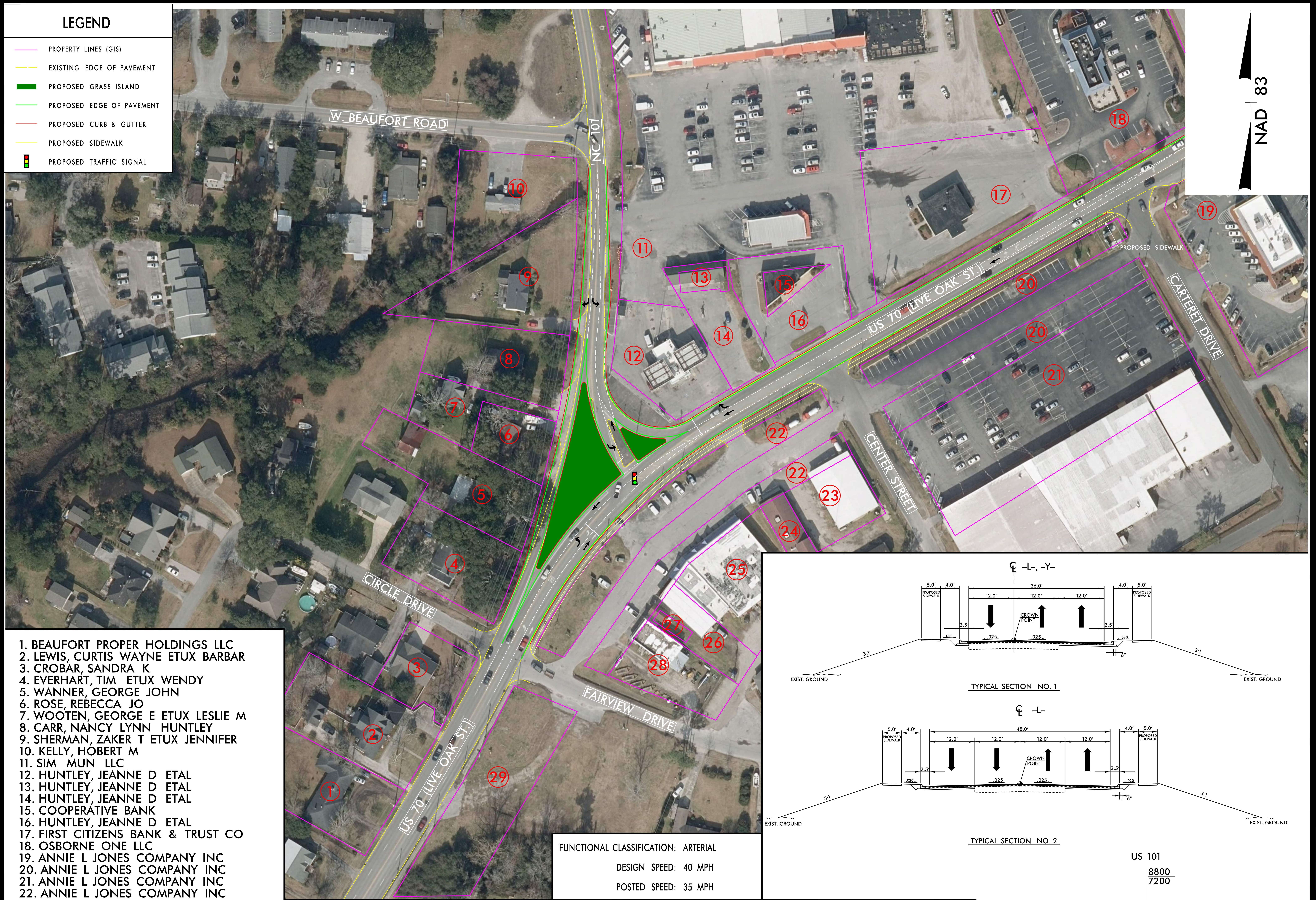


LEGEND

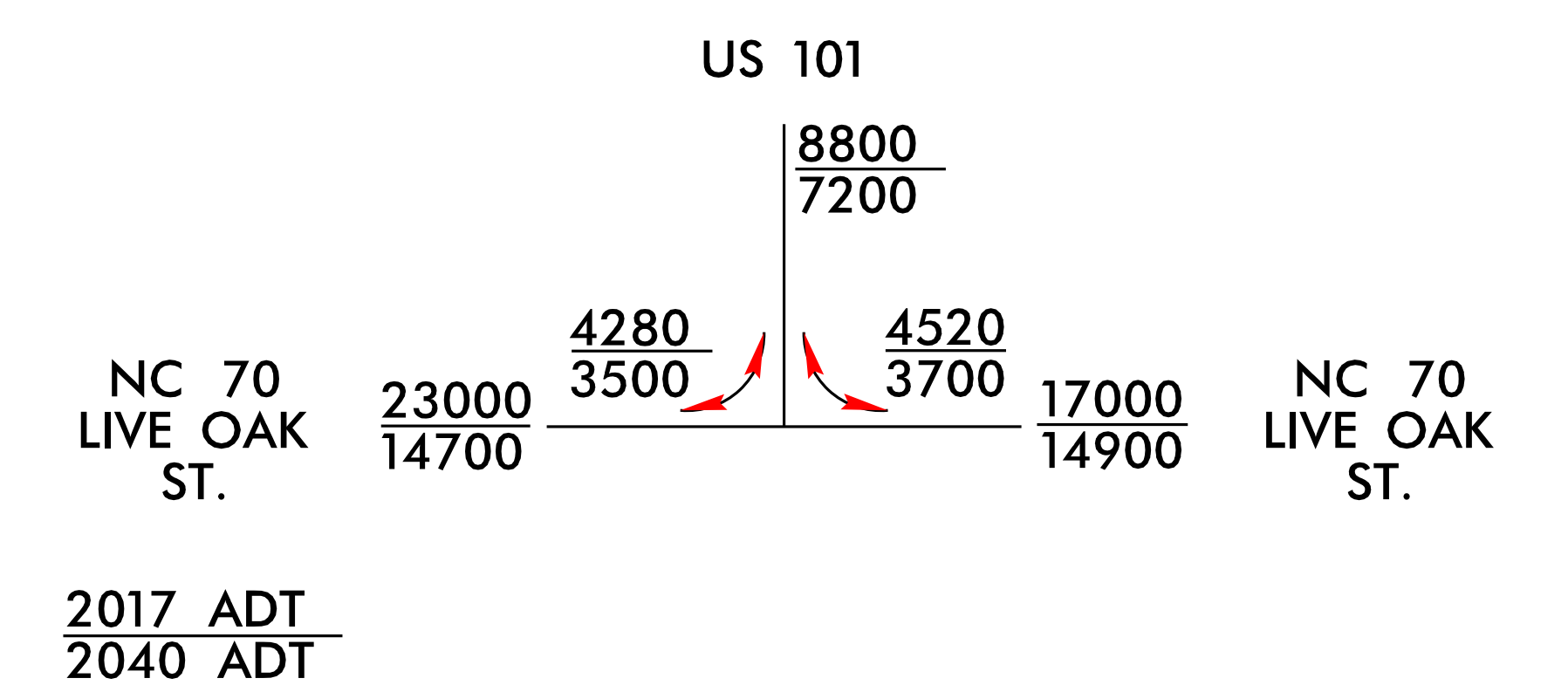
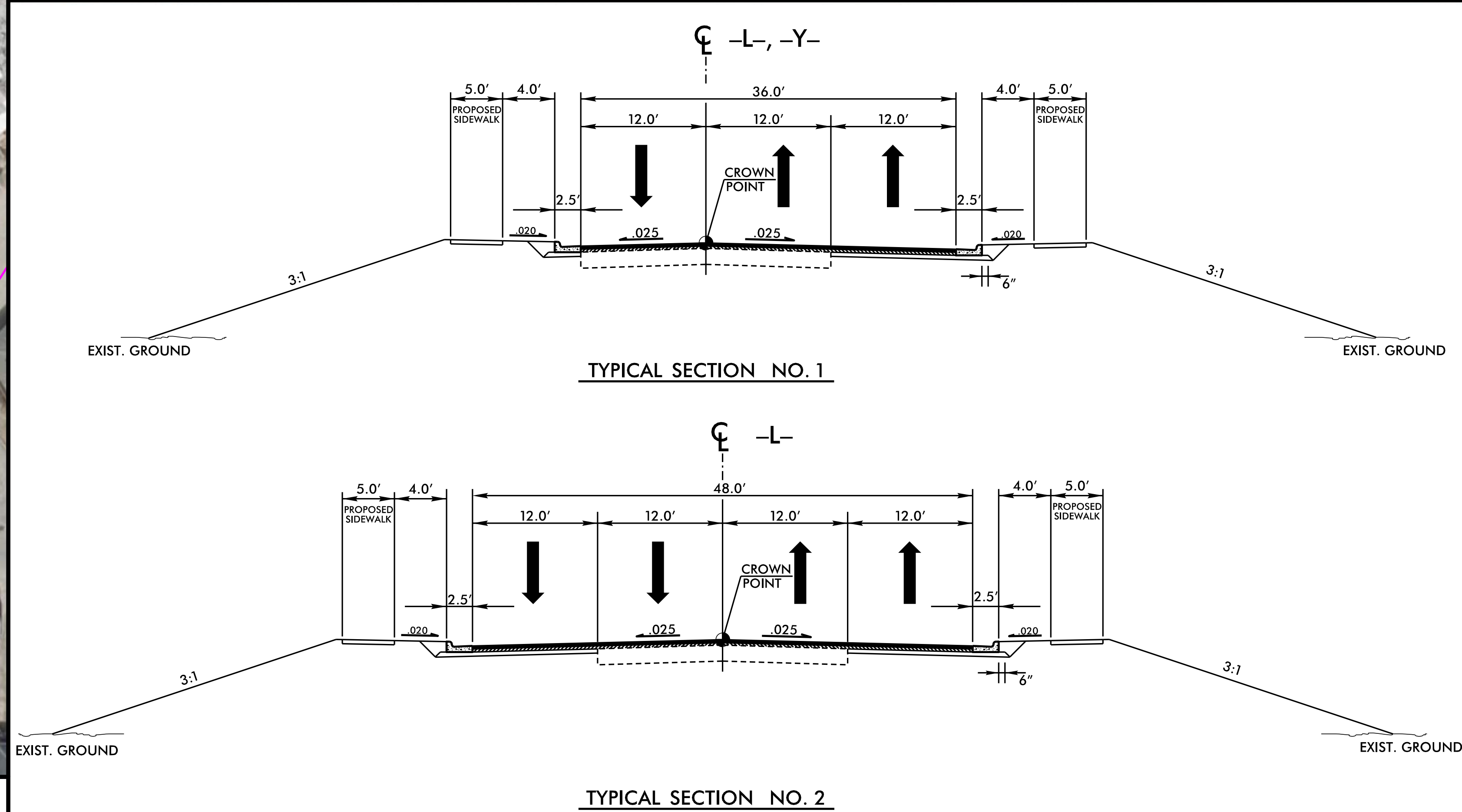
- PROPERTY LINES (GIS)
- EXISTING EDGE OF PAVEMENT
- PROPOSED GRASS ISLAND
- PROPOSED EDGE OF PAVEMENT
- PROPOSED CURB & GUTTER
- PROPOSED SIDEWALK
- PROPOSED TRAFFIC SIGNAL

NAD 83



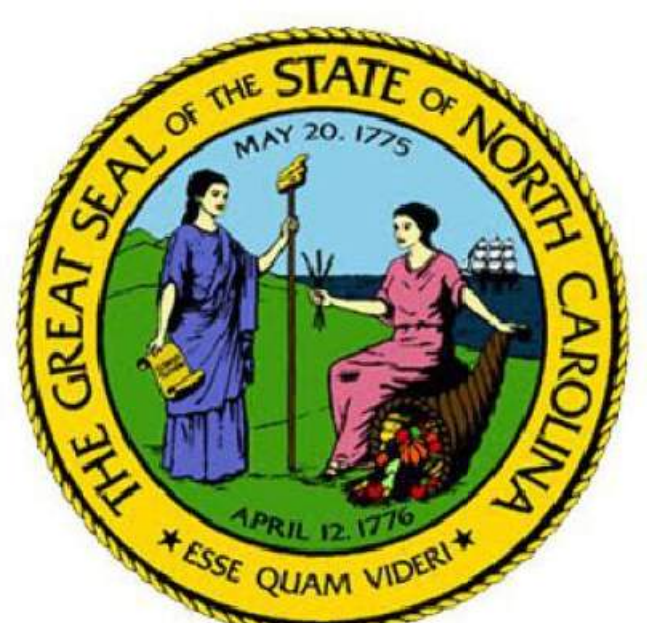
1. BEAUFORT PROPER HOLDINGS LLC
2. LEWIS, CURTIS WAYNE ETUX BARBAR
3. CROBAR, SANDRA K
4. EVERHART, TIM ETUX WENDY
5. WANNER, GEORGE JOHN
6. ROSE, REBECCA JO
7. WOOTEN, GEORGE E ETUX LESLIE M
8. CARR, NANCY LYNN HUNTLEY
9. SHERMAN, ZAKER T ETUX JENNIFER
10. KELLY, HOBERT M
11. SIM MUN LLC
12. HUNTLEY, JEANNE D ETAL
13. HUNTLEY, JEANNE D ETAL
14. HUNTLEY, JEANNE D ETAL
15. COOPERATIVE BANK
16. HUNTLEY, JEANNE D ETAL
17. FIRST CITIZENS BANK & TRUST CO
18. OSBORNE ONE LLC
19. ANNIE L JONES COMPANY INC
20. ANNIE L JONES COMPANY INC
21. ANNIE L JONES COMPANY INC
22. ANNIE L JONES COMPANY INC
23. LAWRENCE, ELAINE ETAL
24. WILLIS, WILLIE P JR ETUX BARBAR
25. ANNIE L JONES COMPANY INC
26. GILLIKIN, FRANK S JR ETAL BEN
27. KIRK, GENE
28. MORRIS, RALPH T ETAL TRUSTEE
29. BEAUFORT PROPERTIES-NM LLC

FUNCTIONAL CLASSIFICATION: ARTERIAL
 DESIGN SPEED: 40 MPH
 POSTED SPEED: 35 MPH



**PROPOSED SIGNALIZED T-INTERSECTION
 FOR US 70 (LIVE OAK STREET) AND NC 101
 CARTERET COUNTY**

NCDOT STIP PROJECT # U-6058
 WBS # 47482.1.1
 MAP 1 OF 1 NOVEMBER 8, 2017



40' 20' 0' 40' 80'
 GRAPHIC SCALE
PRELIMINARY PLANS
 DO NOT USE FOR CONSTRUCTION

PROPOSED SIGNALIZED T-INTERSECTION
 FOR US 70 (LIVE OAK STREET) AND NC 101
 CARTERET COUNTY
 NCDOT STIP PROJECT # U-6058
 WBS # 47482.1.1
 NOVEMBER 8, 2017
 MAP 1 OF 1

PROPOSED SIGNALIZED T-INTERSECTION
 FOR US 70 (LIVE OAK STREET) AND NC 101
 CARTERET COUNTY
 NCDOT STIP PROJECT # U-6058
 WBS # 47482.1.1
 NOVEMBER 8, 2017
 MAP 1 OF 1

NOTE: THIS WORKING MAP IS INTENDED TO SHOW APPROXIMATE IMPACTS OF A SIGNALIZED T-INTERSECTION.