

UTILITY INFORMATION:

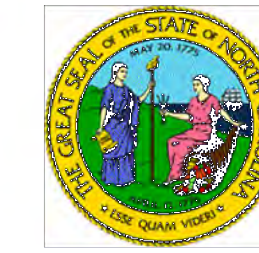
To provide greater visual clarity, existing and proposed utilities are not shown on these maps or on other displays. The utility information shown on these maps is limited to locations of major existing and potential utility easements. The designs shown on these maps, including utility easements, are preliminary and are subject to change.

IMPACTS AND DRIVEWAY TIES

Limits of construction and their impacts shown on this hearing map are based off of preliminary designs and preliminary ground surveys. During the final design stage, designers will attempt to minimize impacts where feasible using final ground surveys. Final driveway locations will also be determined during final design using final surveys.

DESIGN DATA

Functional Classification = Minor Arterial
Design Speed (Kings Mtn. Blvd.) = 50 mph
Design Speed (Margrace) = 50 mph
Maximum Superelevation = 0.08

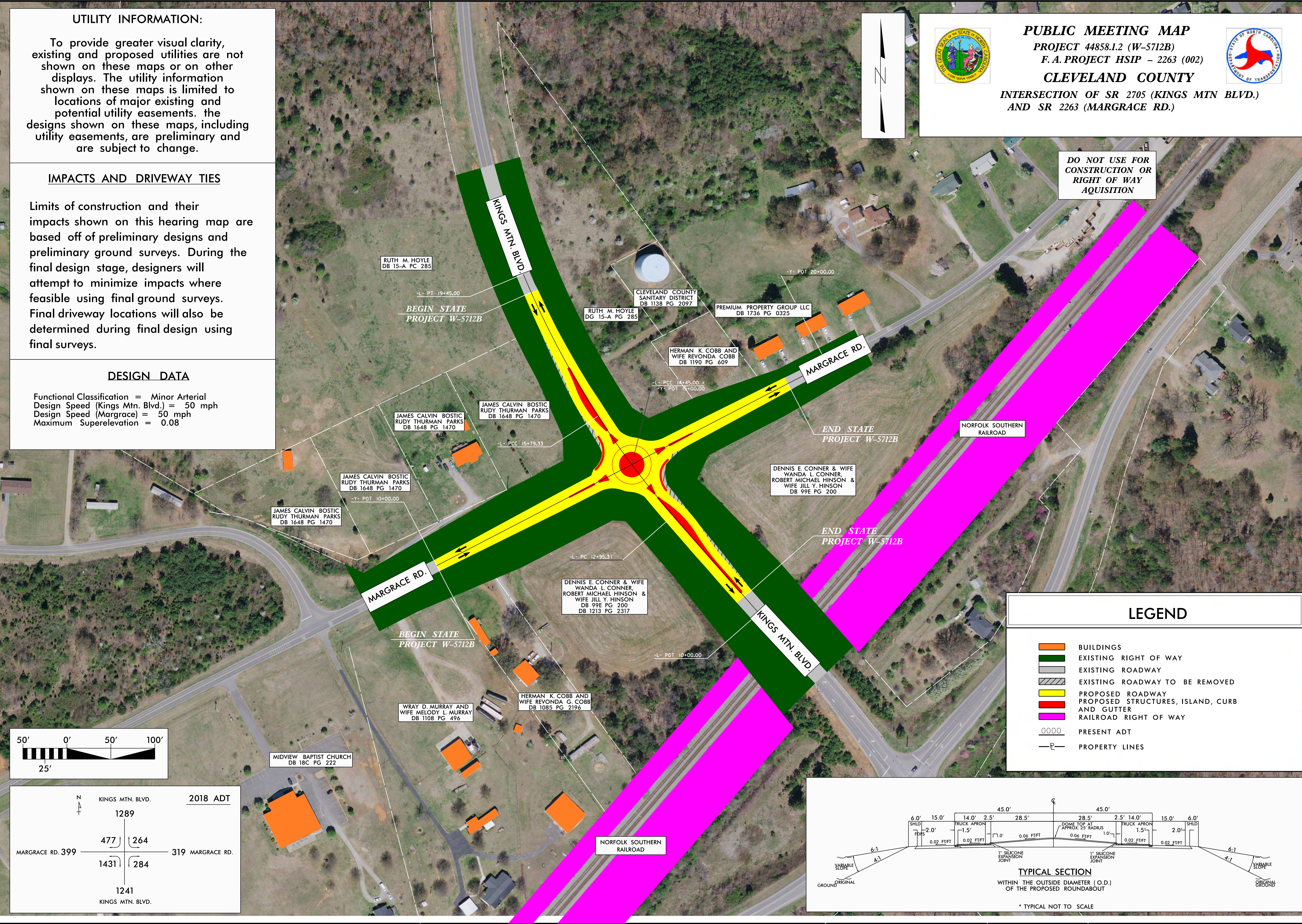


PUBLIC MEETING MAP

PROJECT 44858.1.2 (W-5712B)
F.A. PROJECT HSIP - 2263 (002)
CLEVELAND COUNTY
INTERSECTION OF SR 2705 (KINGS MTN BLVD.)
AND SR 2263 (MARGRACE RD.)



DO NOT USE FOR
CONSTRUCTION OR
RIGHT OF WAY
ACQUISITION



LEGEND

- BUILDINGS
- EXISTING RIGHT OF WAY
- EXISTING ROADWAY
- EXISTING ROADWAY TO BE REMOVED
- PROPOSED ROADWAY
- PROPOSED STRUCTURES, ISLAND, CURB AND GUTTER
- RAILROAD RIGHT OF WAY
- PRESENT ADT
- PROPERTY LINES

