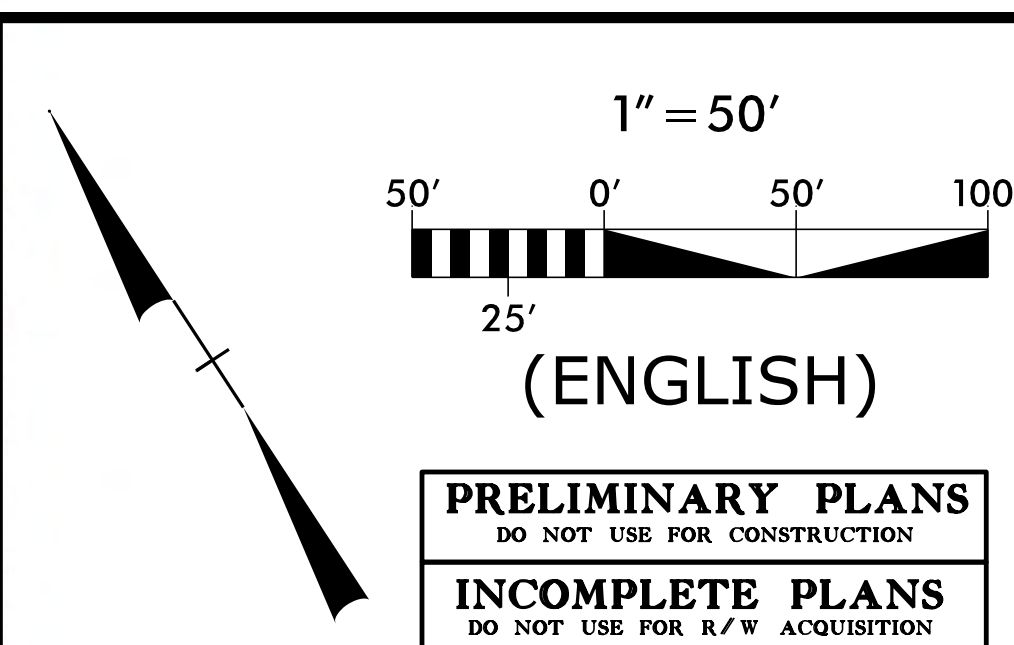


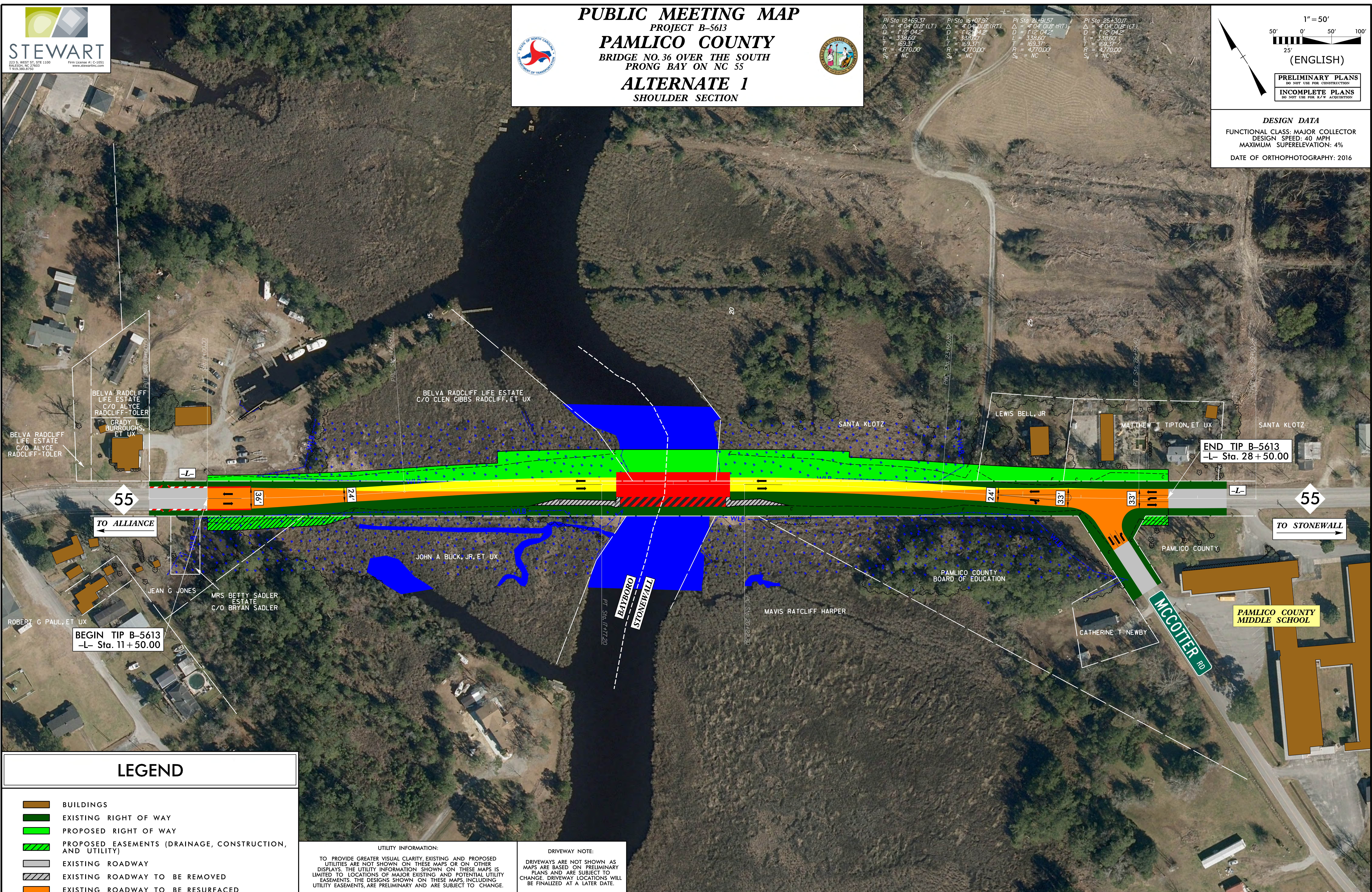
**PUBLIC MEETING MAP**  
 PROJECT B-5613  
**PAMLICO COUNTY**  
 BRIDGE NO. 36 OVER THE SOUTH  
 PRONG BAY ON NC 55  
**ALTERNATE 1**  
 SHOULDER SECTION

PI Sta 12+169.37 Δ = 4°04'01.8" (LT) D = 112°04.2' L = 338.60 T = 163.37 R = 4770.00 S<sub>c</sub> = NC  
 PI Sta 16+07.97 Δ = 4°04'01.8" (RT) D = 112°04.2' L = 338.60 T = 163.37 R = 4770.00 S<sub>c</sub> = NC  
 PI Sta 24+91.57 Δ = 4°04'01.8" (RT) D = 112°04.2' L = 338.60 T = 163.37 R = 4770.00 S<sub>c</sub> = NC  
 PI Sta 25+30.17 Δ = 4°04'01.8" (LT) D = 112°04.2' L = 338.60 T = 163.37 R = 4770.00 S<sub>c</sub> = NC



**PRELIMINARY PLANS**  
 DO NOT USE FOR CONSTRUCTION  
**INCOMPLETE PLANS**  
 DO NOT USE FOR R/W ACQUISITION

**DESIGN DATA**  
 FUNCTIONAL CLASS: MAJOR COLLECTOR  
 DESIGN SPEED: 40 MPH  
 MAXIMUM SUPERELEVATION: 4%  
 DATE OF ORTHOPHOTOGRAPHY: 2016



**LEGEND**

- BUILDINGS
- EXISTING RIGHT OF WAY
- PROPOSED RIGHT OF WAY
- PROPOSED EASEMENTS (DRAINAGE, CONSTRUCTION, AND UTILITY)
- EXISTING ROADWAY
- EXISTING ROADWAY TO BE REMOVED
- EXISTING ROADWAY TO BE RESURFACED
- PROPOSED ROADWAY
- PROPOSED STRUCTURES, ISLAND, CURB AND GUTTER
- PROPOSED STRUCTURES, ISLAND, CURB AND GUTTER TO BE RETAINED
- EXISTING STRUCTURES, ISLAND, CURB AND GUTTER TO BE REMOVED
- LAKES, RIVER, STREAMS AND PONDS
- PROPERTY LINES
- WETLANDS
- WETLAND LIMITS BOUNDARY

**UTILITY INFORMATION:**  
 TO PROVIDE GREATER VISUAL CLARITY, EXISTING AND PROPOSED UTILITIES ARE NOT SHOWN ON THESE MAPS OR ON OTHER DISPLAYS. THE UTILITY INFORMATION SHOWN ON THESE MAPS IS LIMITED TO LOCATIONS OF MAJOR EXISTING AND POTENTIAL UTILITY EASEMENTS. THE DESIGNS SHOWN ON THESE MAPS, INCLUDING UTILITY EASEMENTS, ARE PRELIMINARY AND ARE SUBJECT TO CHANGE.

**DRIVEWAY NOTE:**  
 DRIVEWAYS ARE NOT SHOWN AS MAPS ARE BASED ON PRELIMINARY PLANS AND ARE SUBJECT TO CHANGE. DRIVEWAY LOCATIONS WILL BE FINALIZED AT A LATER DATE.

