

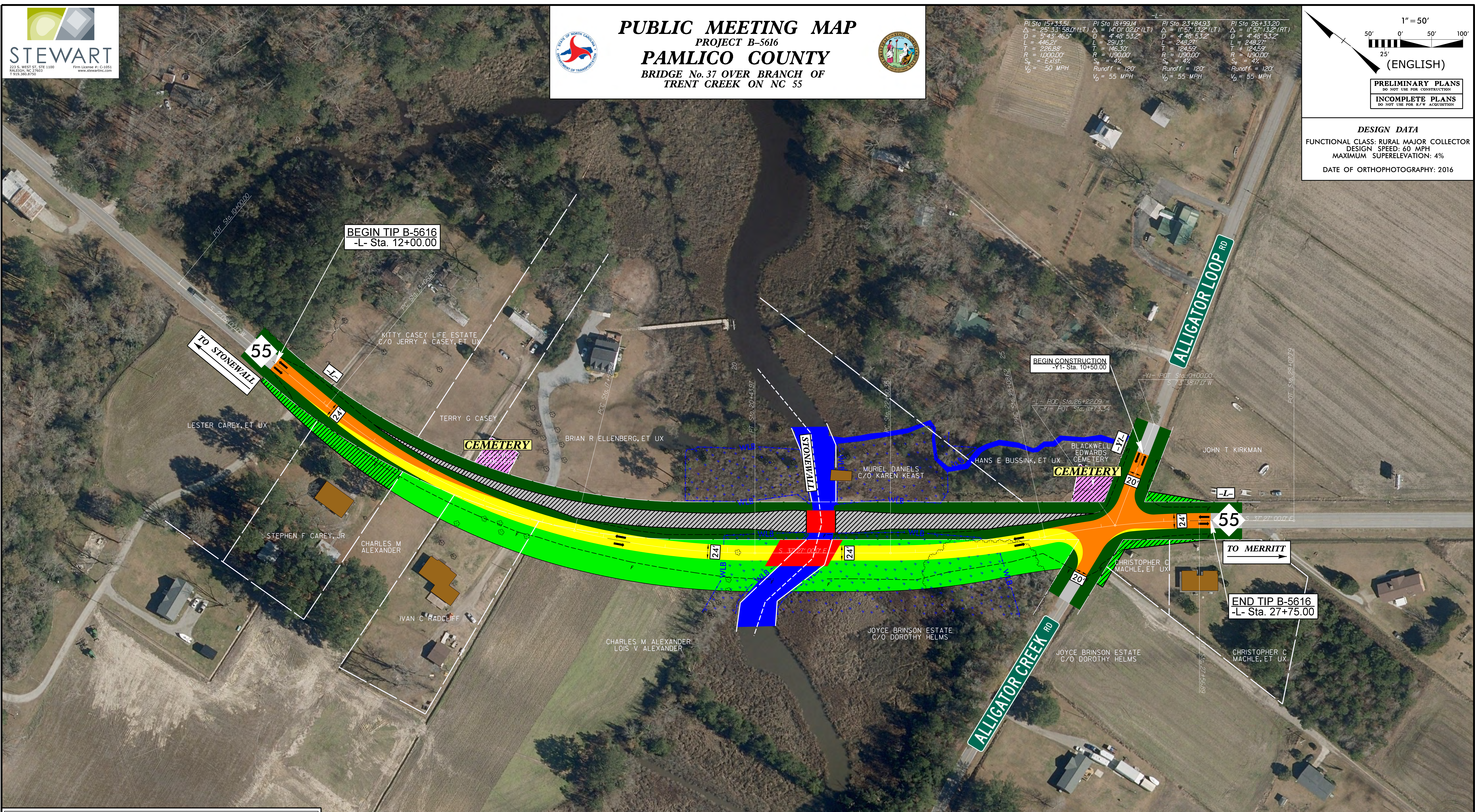
PI Sta 15+33.51 Δ = 25° 33' 58.0" (LT) D = 5' 43' 46.5" L = 446.21 T = 226.88' R = 1,000.00' S _e = Exist. V ₀ = 50 MPH	PI Sta 18+99.14 Δ = 14° 01' 02.0" (LT) D = 4' 48' 53.2" L = 291.13' T = 146.30' R = 1,930.00' S _e = 4% Runoff = 120' V ₀ = 55 MPH	PI Sta 23+84.93 Δ = 1° 57' 13.2" (LT) D = 4' 48' 53.2" L = 248.27' T = 124.59' R = 1,930.00' S _e = 4% Runoff = 120' V ₀ = 55 MPH	PI Sta 26+33.20 Δ = 11° 57' 13.2" (RT) D = 4' 48' 53.2" L = 248.27' T = 124.59' R = 1,930.00' S _e = 4% Runoff = 120' V ₀ = 55 MPH
---	---	--	---

1" = 50'
50' 0' 50' 100'
25'
(ENGLISH)

PRELIMINARY PLANS
DO NOT USE FOR CONSTRUCTION

INCOMPLETE PLANS
DO NOT USE FOR R/W ACQUISITION

DESIGN DATA
FUNCTIONAL CLASS: RURAL MAJOR COLLECTOR
DESIGN SPEED: 60 MPH
MAXIMUM SUPERELEVATION: 4%
DATE OF ORTHOPHOTOGRAPHY: 2016



LEGEND

- BUILDINGS
- EXISTING RIGHT OF WAY
- PROPOSED RIGHT OF WAY
- PROPOSED EASEMENTS (DRAINAGE, CONSTRUCTION, AND UTILITY)
- EXISTING ROADWAY
- EXISTING ROADWAY TO BE REMOVED
- EXISTING ROADWAY TO BE RESURFACED
- PROPOSED ROADWAY
- PROPOSED STRUCTURES, ISLAND, CURB AND GUTTER
- EXISTING STRUCTURES, ISLAND, CURB AND GUTTER TO BE REMOVED
- CEMETERIES
- LAKES, RIVER, STREAMS AND PONDS
- PROPERTY LINES
- WETLANDS
- WETLAND LIMITS BOUNDARY

UTILITY INFORMATION:
TO PROVIDE GREATER VISUAL CLARITY EXISTING AND PROPOSED UTILITIES ARE NOT SHOWN ON THESE MAPS OR ON OTHER DISPLAYS. THE UTILITY INFORMATION SHOWN ON THESE MAPS IS LIMITED TO LOCATIONS OF MAJOR EXISTING AND POTENTIAL UTILITY EASEMENTS. THE DESIGNS SHOWN ON THESE MAPS, INCLUDING UTILITY EASEMENTS, ARE PRELIMINARY AND ARE SUBJECT TO CHANGE.

DRIVEWAY NOTE:
DRIVEWAYS ARE NOT SHOWN AS MAPS ARE BASED ON PRELIMINARY PLANS AND ARE SUBJECT TO CHANGE. DRIVEWAY LOCATIONS WILL BE FINALIZED AT A LATER DATE.

