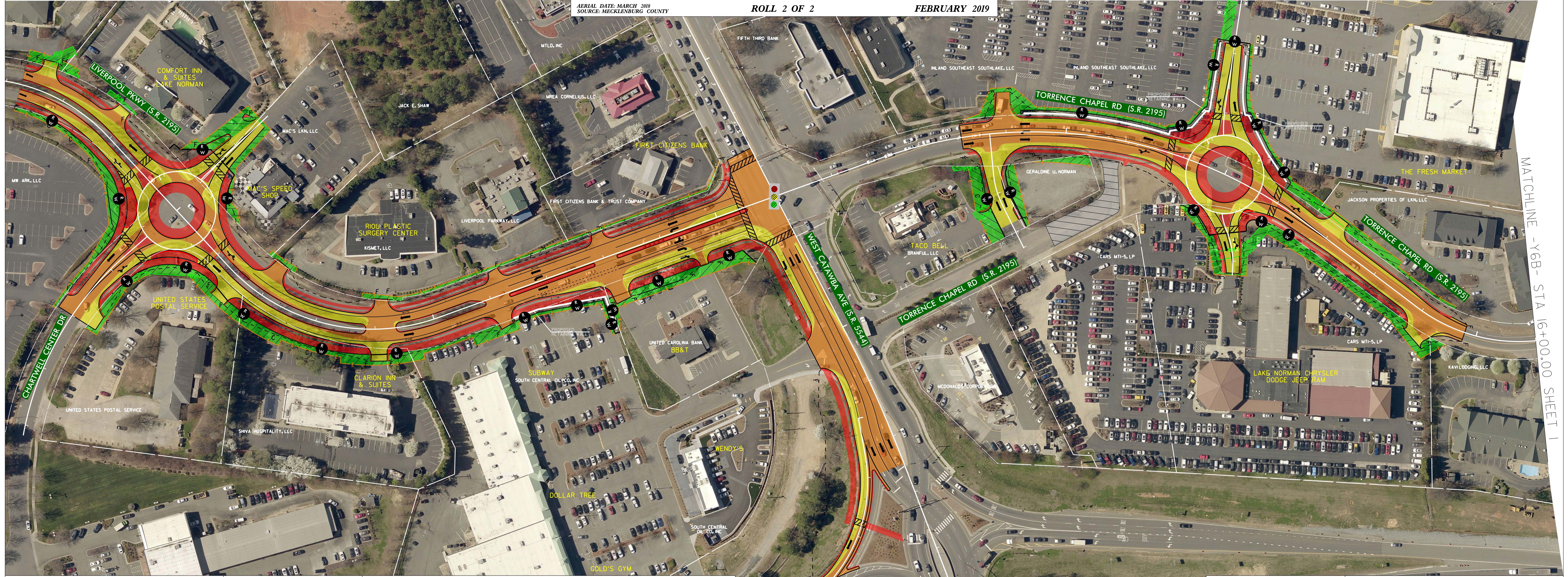


PUBLIC MEETING MAP
 TIP NO. U-5906
MECKLENBURG COUNTY
 TORRENCE CHAPEL ROAD (S.R. 2195) / WEST CATAWBA AVENUE (S.R. 5544) INTERSECTION AND SURROUNDING AREA IMPROVEMENTS
 AERIAL DATE: MARCH 2018
 SOURCE: MECKLENBURG COUNTY
 ROLL 2 OF 2
 FEBRUARY 2019



PUBLIC MEETING MAP
 TIP NO. U-5906
MECKLENBURG COUNTY
 TORRENCE CHAPEL ROAD (S.R. 2195) / WEST CATAWBA AVENUE (S.R. 5544) INTERSECTION AND SURROUNDING AREA IMPROVEMENTS
 ROLL 2 OF 2
 FEBRUARY 2019

PUBLIC MEETING MAP
 TIP NO. U-5906
MECKLENBURG COUNTY
 TORRENCE CHAPEL ROAD (S.R. 2195) / WEST CATAWBA AVENUE (S.R. 5544) INTERSECTION AND SURROUNDING AREA IMPROVEMENTS
 ROLL 2 OF 2
 FEBRUARY 2019

LEGEND

- PROPOSED ROADWAY
- EXISTING ROADWAY TO BE RESURFACED
- PROPOSED STRUCTURES, ISLAND, SIDEWALK, CURB AND GUTTER
- EXISTING ROADWAY TO BE REMOVED
- PROPOSED EASEMENTS (DRAINAGE, CONSTRUCTION, AND UTILITY)
- PROPOSED RETAINING WALL
- PROPOSED SLOPE STAKES
- TEMPORARY CONSTRUCTION EASEMENT
- PROPOSED RIGHT OF WAY
- PROPERTY LINES
- EXISTING TRAFFIC SIGNAL

DESIGN DATA LIVERPOOL PKWY

Functional Class. = Local
 Design Speed = 30 mph
 Max. Superlev. = 0.015

50' 0' SCALE 50' 100'
 25'

PRELIMINARY PLANS
 DO NOT USE FOR CONSTRUCTION

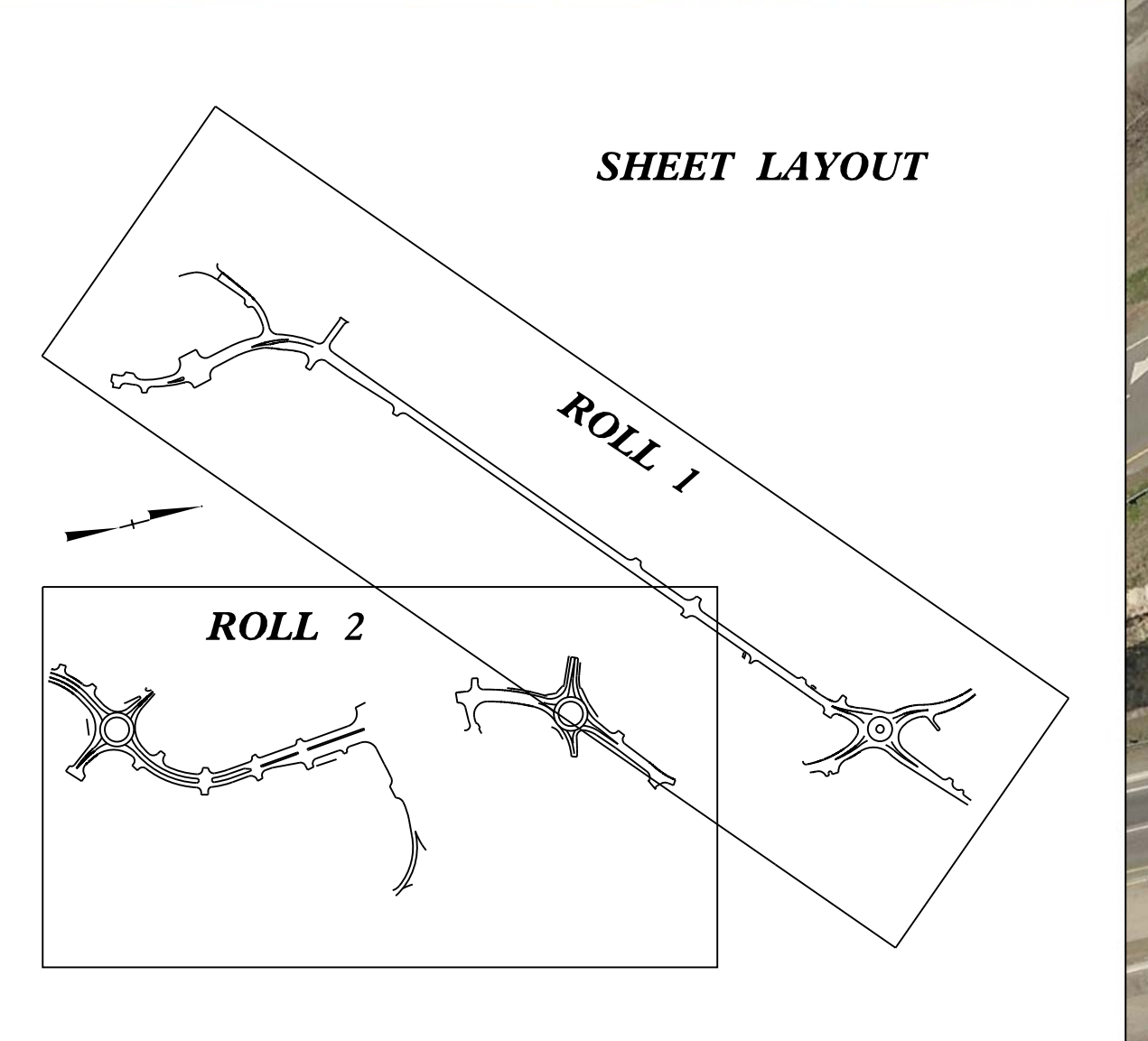
INCOMPLETE PLANS
 DO NOT USE FOR R/W ACQUISITION

IMPACTS AND DRIVEWAY TIES

LIMITS OF CONSTRUCTION AND THEIR IMPACTS SHOWN ON THIS HEARING MAP ARE BASED OFF OF PRELIMINARY DESIGNS AND PRELIMINARY GROUND SURVEYS. DURING THE FINAL DESIGN STAGE, DESIGNERS WILL ATTEMPT TO MINIMIZE IMPACTS WHERE FEASIBLE USING FINAL GROUND SURVEYS. DRIVEWAY LOCATIONS WILL ALSO BE DETERMINED DURING FINAL DESIGN USING FINAL SURVEYS.

UTILITY INFORMATION

TO PROVIDE GREATER VISUAL CLARITY, EXISTING AND PROPOSED UTILITIES ARE NOT SHOWN ON THESE MAPS OR ON OTHER DISPLAYS. THE UTILITY INFORMATION SHOWN ON THESE MAPS IS LIMITED TO LOCATION OF MAJOR EXISTING AND POTENTIAL UTILITY EASEMENTS. THE DESIGNS SHOWN ON THESE MAPS, INCLUDING UTILITY EASEMENTS, ARE PRELIMINARY AND ARE SUBJECT TO CHANGE.



PRELIMINARY PLANS
 DO NOT USE FOR CONSTRUCTION

INCOMPLETE PLANS
 DO NOT USE FOR R/W ACQUISITION

IMPACTS AND DRIVEWAY TIES

LIMITS OF CONSTRUCTION AND THEIR IMPACTS SHOWN ON THIS HEARING MAP ARE BASED OFF OF PRELIMINARY DESIGNS AND PRELIMINARY GROUND SURVEYS. DURING THE FINAL DESIGN STAGE, DESIGNERS WILL ATTEMPT TO MINIMIZE IMPACTS WHERE FEASIBLE USING FINAL GROUND SURVEYS. DRIVEWAY LOCATIONS WILL ALSO BE DETERMINED DURING FINAL DESIGN USING FINAL SURVEYS.

UTILITY INFORMATION

TO PROVIDE GREATER VISUAL CLARITY, EXISTING AND PROPOSED UTILITIES ARE NOT SHOWN ON THESE MAPS OR ON OTHER DISPLAYS. THE UTILITY INFORMATION SHOWN ON THESE MAPS IS LIMITED TO LOCATION OF MAJOR EXISTING AND POTENTIAL UTILITY EASEMENTS. THE DESIGNS SHOWN ON THESE MAPS, INCLUDING UTILITY EASEMENTS, ARE PRELIMINARY AND ARE SUBJECT TO CHANGE.

DESIGN DATA TORRENCE CHAPEL RD

Functional Class. = Local
 Design Speed = 40 mph
 Max. Superlev. = 0.04

50' 0' SCALE 50' 100'
 25'

LEGEND

- PROPOSED ROADWAY
- EXISTING ROADWAY TO BE RESURFACED
- PROPOSED STRUCTURES, ISLAND, SIDEWALK, CURB AND GUTTER
- EXISTING ROADWAY TO BE REMOVED
- PROPOSED EASEMENTS (DRAINAGE, CONSTRUCTION, AND UTILITY)
- PROPOSED RETAINING WALL
- PROPOSED SLOPE STAKES
- TEMPORARY CONSTRUCTION EASEMENT
- PROPOSED RIGHT OF WAY
- PROPERTY LINES
- EXISTING TRAFFIC SIGNAL