

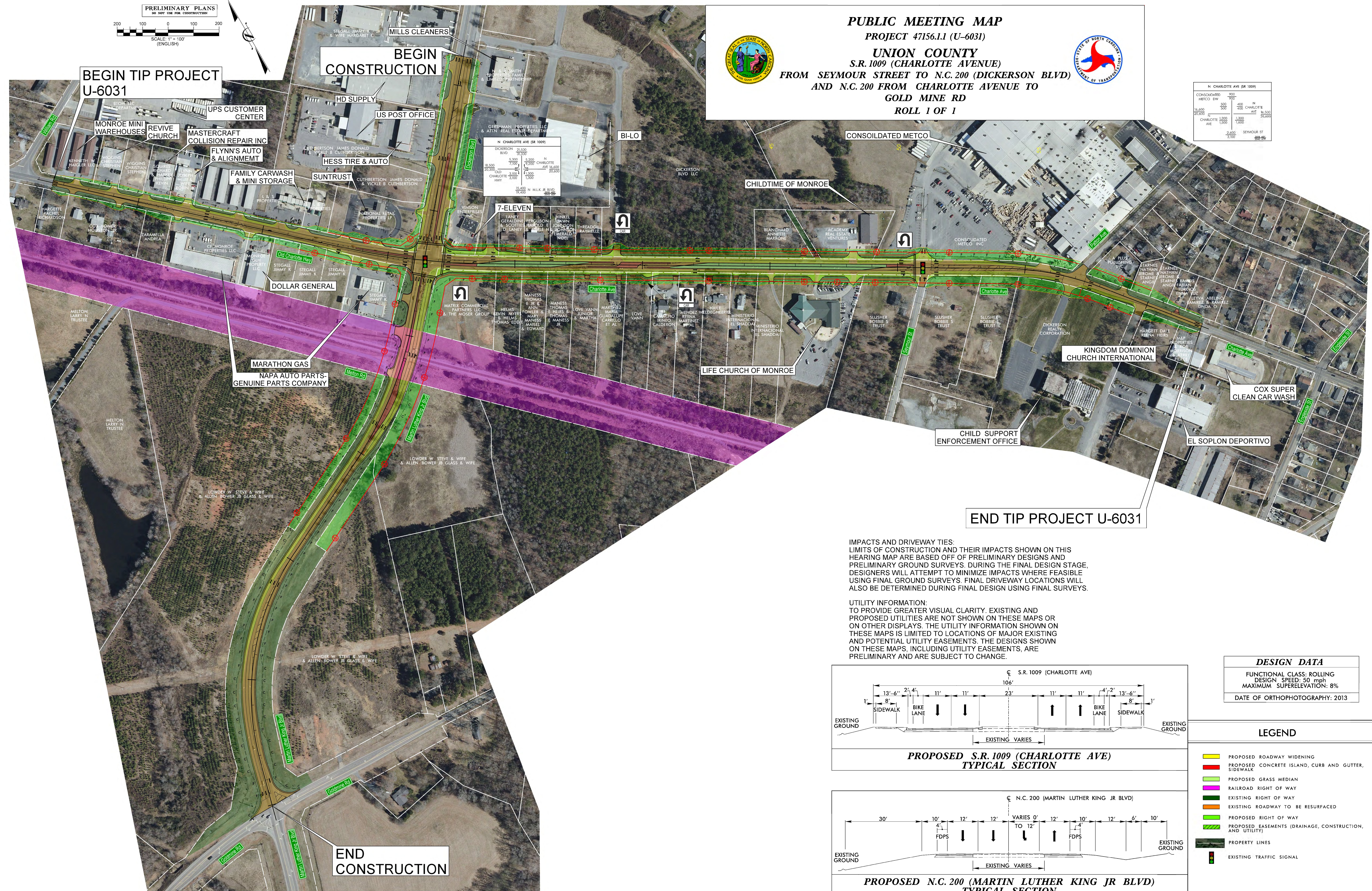
PUBLIC MEETING MAP
PROJECT 47156.1.1 (U-6031)
UNION COUNTY
S.R.1009 (CHARLOTTE AVENUE)
FROM SEYMOUR STREET TO N.C.200 (DICKERSON BLVD)
AND N.C.200 FROM CHARLOTTE AVENUE TO
GOLD MINE RD
ROLL 1 OF 1



N CHARLOTTE AVE SR 1009	
CONSOIDATED METCO EAV	900
METCO EAV	700
N CHARLOTTE AVE	400
N CHARLOTTE AVE	1,300
N CHARLOTTE AVE	1,600
SEYMOUR ST	2,400
	3,100

PUBLIC MEETING MAP
 PROJECT 47156.1.1 (U-6031)
 UNION COUNTY
 S.R.1009 (CHARLOTTE AVENUE)
 FROM SEYMOUR STREET TO N.C.200 (DICKERSON BLVD)
 AND N.C.200 FROM CHARLOTTE AVENUE TO
 GOLD MINE RD
 ROLL 1 OF 1

PUBLIC MEETING MAP
 PROJECT 47156.1.1 (U-6031)
 UNION COUNTY
 S.R.1009 (CHARLOTTE AVENUE)
 FROM SEYMOUR STREET TO N.C.200 (DICKERSON BLVD)
 AND N.C.200 FROM CHARLOTTE AVENUE TO
 GOLD MINE RD
 ROLL 1 OF 1

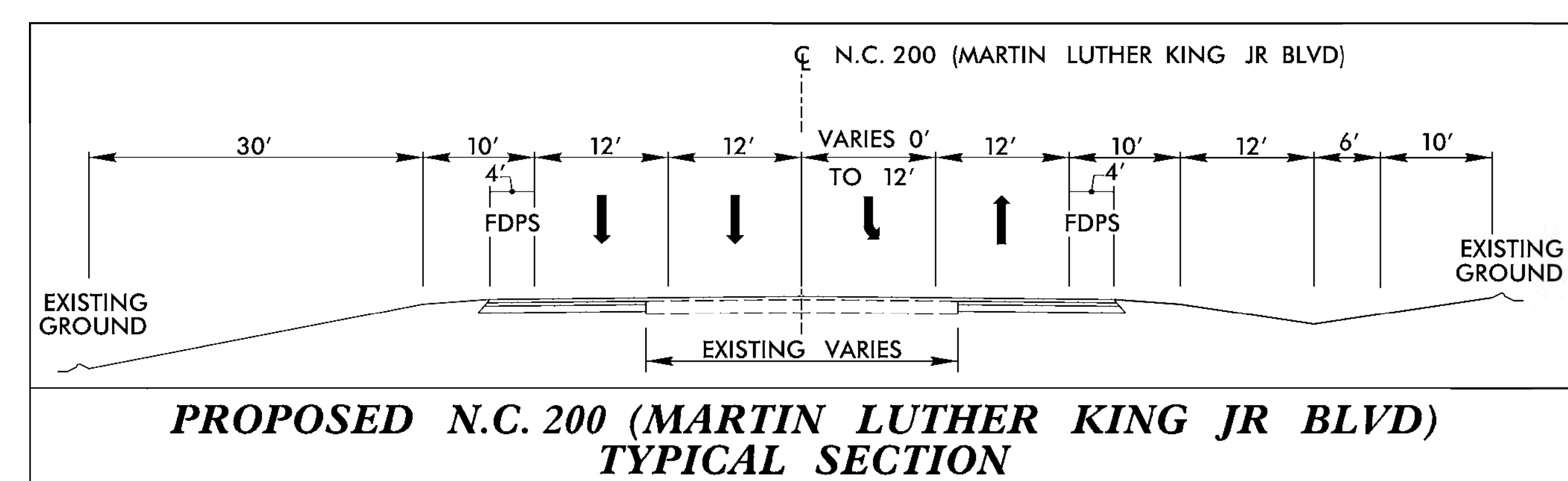
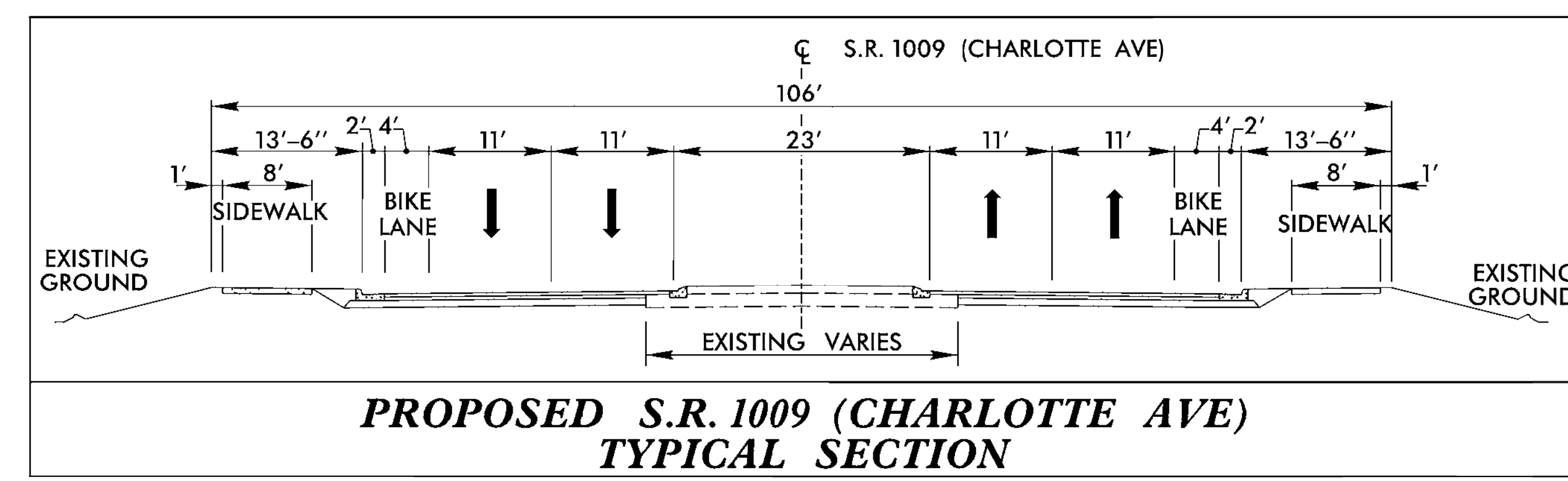


IMPACTS AND DRIVEWAY TIES:
 LIMITS OF CONSTRUCTION AND THEIR IMPACTS SHOWN ON THIS HEARING MAP ARE BASED OFF OF PRELIMINARY DESIGNS AND PRELIMINARY GROUND SURVEYS. DURING THE FINAL DESIGN STAGE, DESIGNERS WILL ATTEMPT TO MINIMIZE IMPACTS WHERE FEASIBLE USING FINAL GROUND SURVEYS. FINAL DRIVEWAY LOCATIONS WILL ALSO BE DETERMINED DURING FINAL DESIGN USING FINAL SURVEYS.

UTILITY INFORMATION:
 TO PROVIDE GREATER VISUAL CLARITY, EXISTING AND PROPOSED UTILITIES ARE NOT SHOWN ON THESE MAPS OR ON OTHER DISPLAYS. THE UTILITY INFORMATION SHOWN ON THESE MAPS IS LIMITED TO LOCATIONS OF MAJOR EXISTING AND POTENTIAL UTILITY EASEMENTS. THE DESIGNS SHOWN ON THESE MAPS, INCLUDING UTILITY EASEMENTS, ARE PRELIMINARY AND ARE SUBJECT TO CHANGE.

DESIGN DATA

FUNCTIONAL CLASS:	ROLLING
DESIGN SPEED:	50 mph
MAXIMUM SUPERELEVATION:	8%
DATE OF ORTHOPHOGRAPHY:	2013



LEGEND

- █ PROPOSED ROADWAY WIDENING
- █ PROPOSED CONCRETE ISLAND, CURB AND GUTTER, SIDEWALK
- █ PROPOSED GRASS MEDIAN
- █ RAILROAD RIGHT OF WAY
- █ EXISTING RIGHT OF WAY
- █ EXISTING ROADWAY TO BE RESURFACED
- █ PROPOSED RIGHT OF WAY
- █ PROPOSED EASEMENTS (DRAINAGE, CONSTRUCTION, AND UTILITY)
- █ PROPERTY LINES
- █ EXISTING TRAFFIC SIGNAL