

DESIGN PUBLIC MEETING MAP
 TIP NO. U-5307
 WBS: 47027.1.1 FA: NHS-0001(138)
WAKE COUNTY
 U.S. 1
 FROM INTERSTATE 540 TO
 PURNELL RD. (S.R. 1909) / HARRIS RD. (S.R. 1931)
 UPGRADE ROADWAY TO CONTROLLED ACCESS FACILITY
 WADFORD DRIVE - BRIDGE OVER NEUSE RIVER BETTERMENT OPTION
 December 2021



DESIGN PUBLIC MEETING MAP

TIP NO. U-5307

WBS: 47027.1.1 FA: NHS-0001(138)

WAKE COUNTY

U.S. 1

FROM INTERSTATE 540 TO

PURNELL RD. (S.R. 1909) / HARRIS RD. (S.R. 1931)

UPGRADE ROADWAY TO CONTROLLED ACCESS FACILITY December 2021

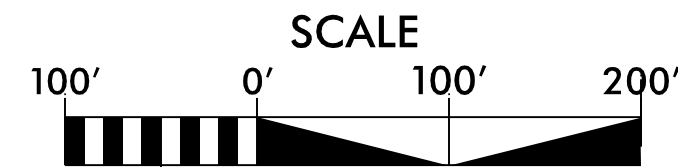
WADFORD DRIVE - BRIDGE OVER NEUSE RIVER BETTERMENT OPTION



DESIGN DATA	
Functional Class.	= Freeway
Design Speed	= 70 mph
Max. Superelev.	= 0.08

PRELIMINARY PLANS
DO NOT USE FOR CONSTRUCTION

INCOMPLETE PLANS
DO NOT USE FOR R/W ACQUISITION



AERIAL DATE: SPRING 2021
SOURCE: NC ONE MAP

NOTE:
FULL CONTROL OF ACCESS IS DEFINED AS CONNECTIONS TO A FACILITY PROVIDED ONLY VIA RAMP AT INTERCHANGES. ALL CROSS-STREETS ARE GRADE-SEPARATED. NO PRIVATE DRIVEWAY CONNECTIONS ARE ALLOWED.

IMPACTS AND DRIVEWAY TIES

LIMITS OF CONSTRUCTION AND THEIR IMPACTS SHOWN ON THIS HEARING MAP ARE BASED OFF OF PRELIMINARY DESIGNS AND PRELIMINARY GROUND SURVEYS. DURING THE FINAL DESIGN STAGE, DESIGNERS WILL ATTEMPT TO MINIMIZE IMPACTS WHERE FEASIBLE USING FINAL GROUND SURVEYS. DRIVEWAY LOCATIONS WILL ALSO BE DETERMINED DURING FINAL DESIGN USING FINAL SURVEYS.

UTILITY INFORMATION

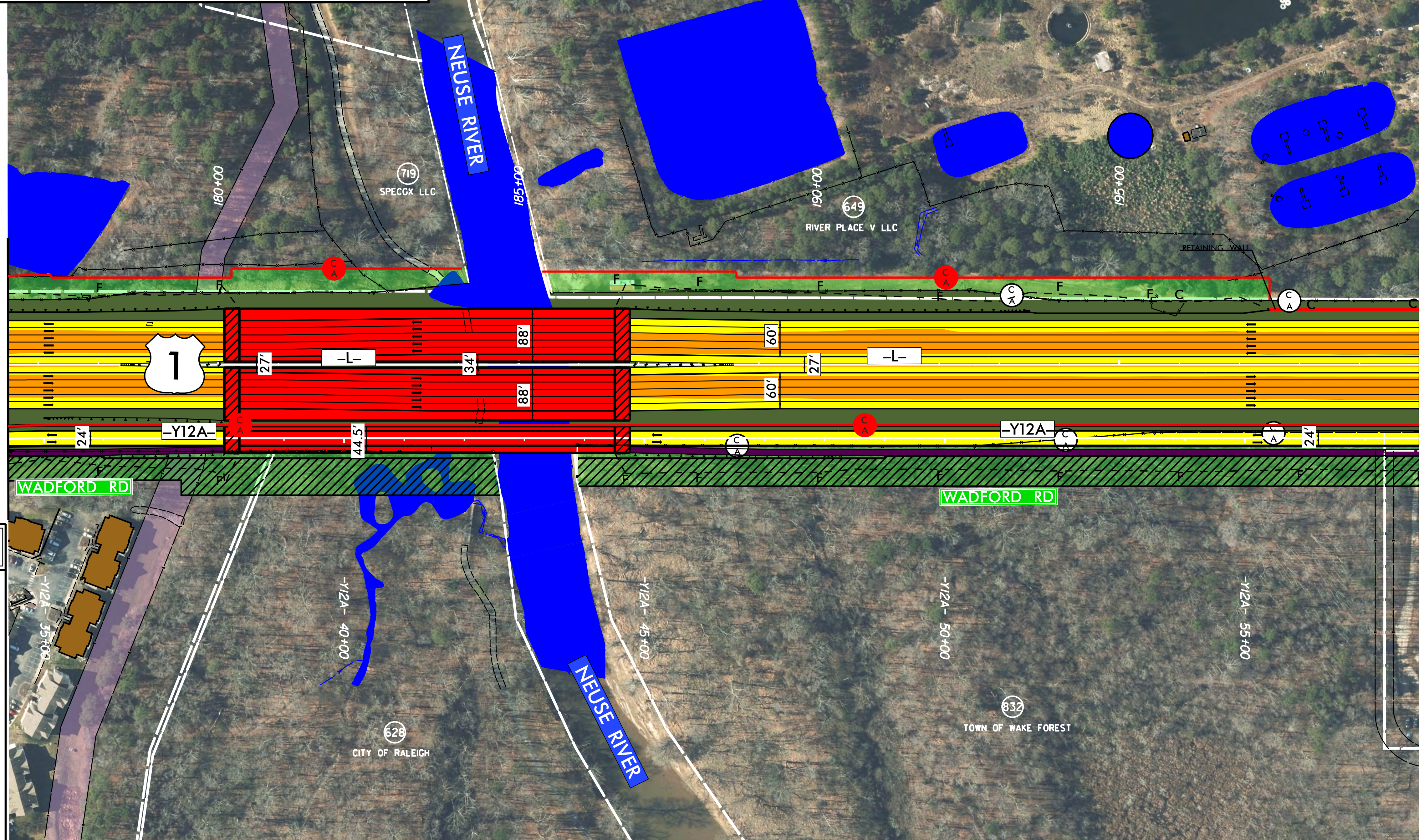
TO PROVIDE GREATER VISUAL CLARITY, EXISTING AND PROPOSED UTILITIES ARE NOT SHOWN ON THESE MAPS OR ON OTHER DISPLAYS. THE UTILITY INFORMATION SHOWN ON THESE MAPS IS LIMITED TO LOCATION OF MAJOR EXISTING AND POTENTIAL UTILITY EASEMENTS. THE DESIGNS SHOWN ON THESE MAPS, INCLUDING UTILITY EASEMENTS, ARE PRELIMINARY AND ARE SUBJECT TO CHANGE.

THIS PROJECT IS WITHIN THE MUNICIPAL BOUNDARIES OF THE CITY OF RALEIGH AND TOWN OF WAKE FOREST

BETTERMENTS ARE CONTINGENT ON MUNICIPAL AGREEMENTS. BETTERMENTS CAN INCLUDE BUT ARE NOT LIMITED TO SIDEWALK, SIDEPATH, SIGNAL POLE MATERIAL, AND OPTIONAL ROAD IMPROVEMENTS.

LEGEND

- BUILDINGS
- EXISTING RIGHT OF WAY
- PROPOSED RIGHT OF WAY
- PROPOSED EASEMENTS (DRAINAGE, CONSTRUCTION, AND UTILITY)
- EXISTING ROADWAY
- EXISTING ROADWAY TO BE REMOVED
- EXISTING ROADWAY TO BE RESURFACED
- PROPOSED ROADWAY
- TEMPORARY ROADWAY / DETOURS
- FUTURE ROADWAY
- PROPOSED STRUCTURES, ISLAND, SIDEWALK, CURB AND GUTTER
- EXISTING STRUCTURES, ISLAND, SIDEWALK, CURB AND GUTTER TO BE RETAINED
- EXISTING STRUCTURES TO BE REMOVED
- LAKES, RIVER, STREAMS AND PONDS
- RAILROAD RIGHT OF WAY
- EXISTING UTILITY EASEMENT
- CEMETERIES
- WETLANDS
- PROPOSED SIDEPATH/GREENWAY
- HISTORIC PROPERTY BOUNDARY
- PARKS
- PROPOSED CONTROL OF ACCESS
- EXISTING CONTROL OF ACCESS
- PRESENT ADT
- FUTURE ADT
- PROPERTY LINES
- CITY AND TOWN LINES
- COUNTY LINES
- EXISTING TRAFFIC SIGNAL
- EXISTING TRAFFIC SIGNAL TO BE REMOVED
- PROPOSED TRAFFIC SIGNAL
- TRANSMISSION TOWER



MATCHLINE
-L- 176 + 50.00

MATCHLINE
-L- 200 + 00.00

